



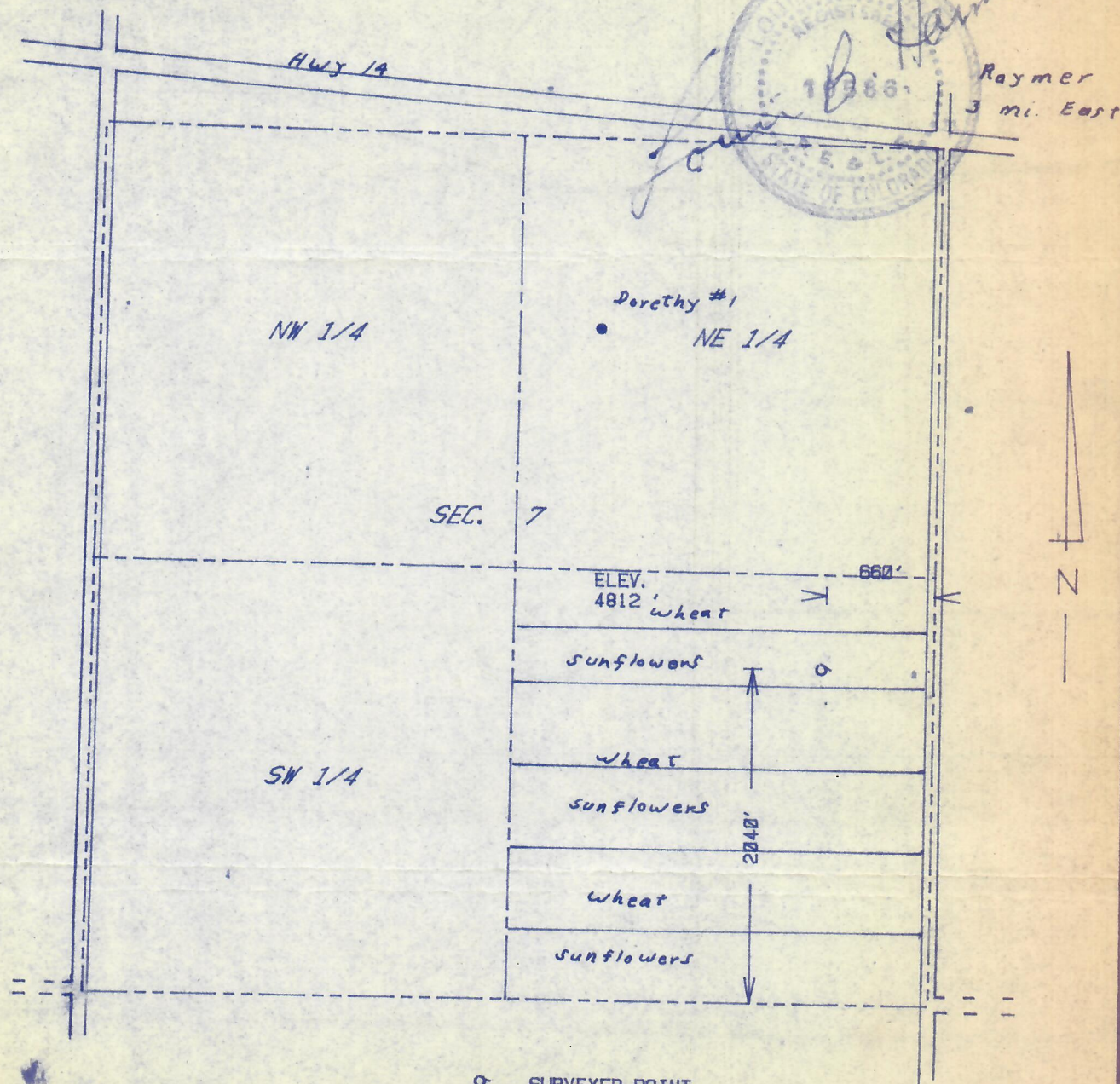
00215461

RECEIVED

The accompanying plat is an accurate representation showing the location of a proposed well. This location may be described as a point 2040 feet north of the south line, and 660 feet west of the east line of Section 7, Township 7 N Range 58 W of the 6th P.M., WELD County, COLORADO. The surface elevation at this point is 4812 feet m.s.l.

OCT 6 1983

COLO. OIL & GAS CONS. COMM.



ARMON
ENGINEERING
SERVICES

CROSBY #1 (RESTAKE)

ENERGY MINERALS CORP.

WELD CO., COLORADO

3 OCTOBER 1983

