



00220804

Dresser Atlas

DUAL INDUCTION
FOCUSED LOG

LIGHT HOLE.

Company: WEEKS ENERGY MINERALS CORP
Well: DOROTHY NO. 2
Field: WILDHORSE
County: WELD State: COLO.Location: 446 PM
446 PM
NE/NE 7 7N 58W
Sec 1 Twp 7N Range 58WOTHER SERVICES
COLC/OR
PROLOG.PERMANENT DATUM: G.L. ELEV. 4176
LOGGING MEASURED FROM K.B. 11 FT. ABOVE P.O.

DRILLING MEASURED FROM K.B.

DATE: 26 FEB. 85

SERVICE ORDER: 44836

DEPTH-DRILLER: 4488

DEPTH-LOGGER: 4485

BOTTOM LOGGED INTERVAL: 4483

TOP LOGGED INTERVAL: 4481

CHASING - DRILLER: 8 8/8 @ 221

CHASING - LOGGER: 223

BIT SIZE: 7 7/8

TYPE FLUID IN HOLE: CRACK-OIL

DENSITY AND VISCOSITY: 9.7 5.8

PM AND FLUID LOSS: 9.8

SOURCE OF SAMPLE: FLOWLINE

PM AT WELP. TEMP.: 3.94 8.46

PM AT WELP. TEMP.: 2.95 8.46

PM AT WELP. TEMP.: 4.93 8.46

SOURCE OF PM / PMC: CMC CMC

PM AT WELP: 3.18 @ 153

TIME SINCE CIRCULATION: 3 HOURS

PMK. REC. TEMP. DEG. F: 153

EQUIP. NO. / LOG: 6376 (LJ) PT. HORN

RECORDED BY: J.M. CROOK

WITNESSED BY: D. FROEDER

RECEIVED
APR 12 1985

COLO. OIL & GAS CONS. COMM.

TIGHT HOLE

FOLD HERE

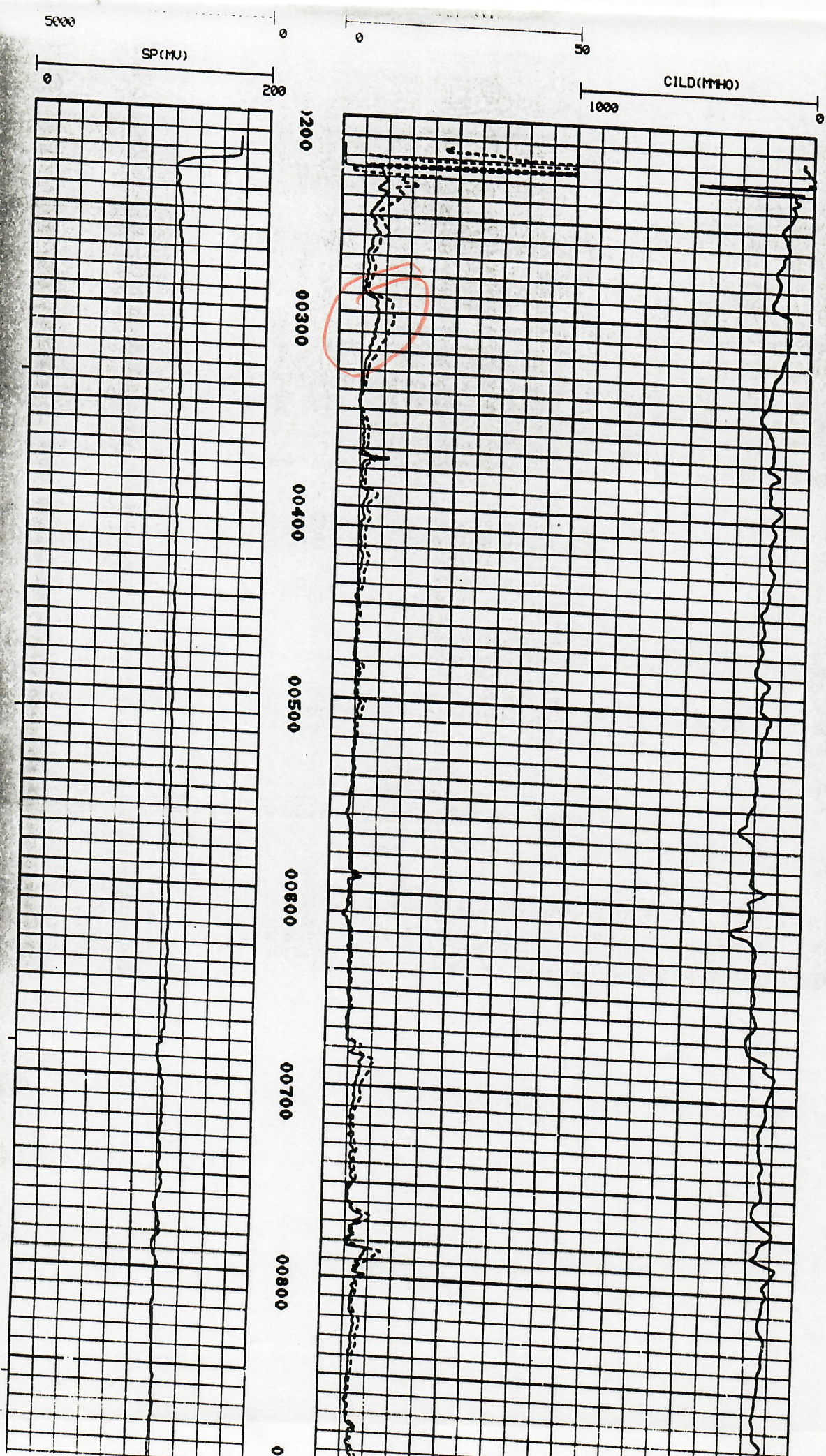
IN MAKING INTERPRETATIONS OF LOGS OUR EMPLOYEES WILL GIVE CUSTOMER THE BENEFIT OF THEIR BEST JUDGMENT, BUT SINCE ALL INTERPRETATIONS ARE OPINIONS BASED ON INFERENCES FROM ELECTRICAL OR OTHER MEASUREMENTS, WE CANNOT AND WE DO NOT GUARANTEE THE ACCURACY OR CORRECTNESS OF ANY INTERPRETATION. WE SHALL NOT BE LIABLE OR RESPONSIBLE FOR ANY LOSS, COST, DAMAGE OR EXPENSE WHATSOEVER INCURRED OR SUSTAINED BY THE CUSTOMER RESULTING FROM ANY INTERPRETATION MADE BY ANY OF OUR EMPLOYEES.

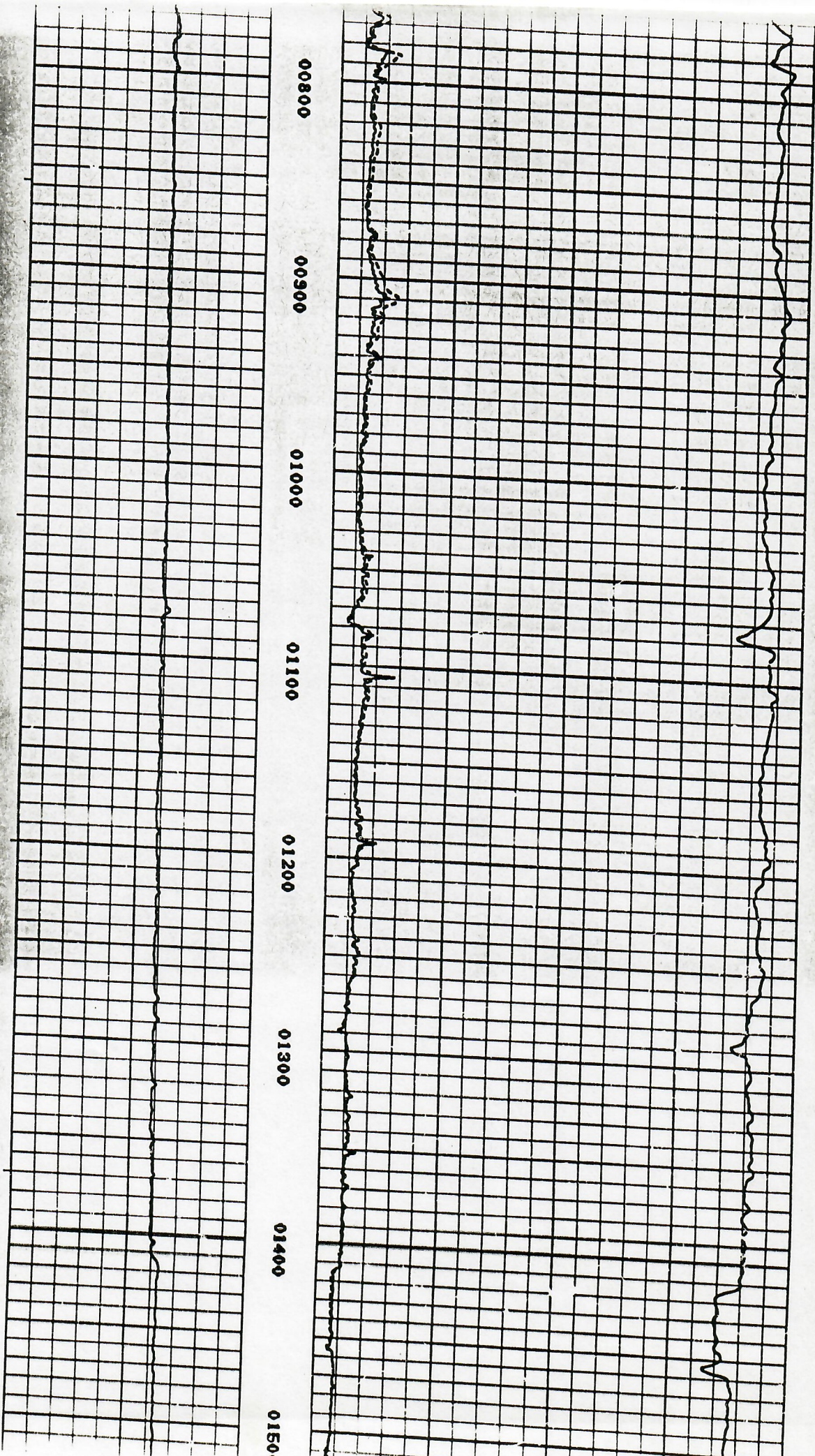
REMARKS RUN (1)

TIGHT HOLE

EQUIPMENT DATA

RUN	TRIP	TOOL	SERIAL NO.	SERIES NO.	POSITION
1	1	DIFL	60069	1503	FREE
1	1	GR			





	QTR	QTR	SEC	TWNS	RANGE	PM	NAME	DEPTH	TPERF	BPERF
A	SW	NE	01	070N	0580W	S	NORTHUP HOMER	165		
B	SW	NE	01	070N	0580W	S	NORTHUP HOMER E			
C	NW	NW	01	070N	0580W	S	NAILL MELVIN	100		
D	SW	SE	02	070N	0580W	S	NORTHUP DELWYN			
E	NE	NE	03	070N	0580W	S	BUSSEY WALTER MAYOR	1042		
F	NE	NE	03	070N	0580W	S	FOX W J	158		
G	NE	NE	03	070N	0580W	S	WIGGINS	153		
H	NE	NE	03	070N	0580W	S	PRAIRIE RE 11	170		
I	NW	NE	03	070N	0580W	S	WALKER BEN	125		
J	NE	NW	03	070N	0580W	S	KRAGER ALICE	152	110	130
K	NE	NW	03	070N	0580W	S	KEAGER CLYDE	132		
L	SE	NE	04	070N	0580W	S	NORTHUP DELWYN			
M	SE	NE	04	070N	0580W	S	NORTHUP DELWYN			
N	SE	SE	04	070N	0580W	S	HORTON DON	175	100	175
O	SW	SW	04	070N	0580W	S	HORTON DON	125	70	125
P	NW	NE	06	070N	0580W	S	SEIFRIED CLARENCE	141		
Q	NW	NW	08	070N	0580W	S	NATURAL GAS ASSOCIATES			
R	NE	NW	09	070N	0580W	S	CROSBY M P			
S	NE	NW	09	070N	0580W	S	NICKERSON MERRITT	150		
T	NE	NW	09	070N	0580W	S	CROSBY MARJORIE P.	174		

Letter=Choice | F10=Mark 1| PgUp/PgDn=±20 | UpAr/DnAr =±1 |Esc=Quit

	QTR	QTR	SEC	TWNS	RANGE	PM	NAME	DEPTH	TPERF	BPERF
A	SE	SE	09	070N	0580W	S	LIVENGOOD RONALD L.	160		
B	SW	SE	10	070N	0580W	S	MC ENDAFFER GUY & ROSELLA	257	90	200
C	SE	SW	10	070N	0580W	S	SCHMEECKLE ELDON	160		
D	SW	SW	11	070N	0580W	S	KUGLER PAUL G	300		
E	SW	SW	11	070N	0580W	S	KUGLER PAUL G			
F	NE	NW	13	070N	0580W	S	NORTHUP HOMER E	165		
G	SW	SW	13	070N	0580W	S	MARKE RALPH	160		
H	SE	SE	18	070N	0580W	S	NICKERSON ALBERT	150		
I	SE	SE	18	070N	0580W	S	NICKERSON ALBERT			
J	NE	SE	21	070N	0580W	S	VANGRAEFSCHPE FARMS INC.	46	90	164
K	NW	SW	22	070N	0580W	S	VANGRAEFSCHPE			
L	NW	SW	22	070N	0580W	S	VANGRAEFSCHPE FARMS INC.	46		
M	NW	NW	27	070N	0580W	S	KNOLL O.			
N	NW	NW	27	070N	0580W	S	KNOLL ORVILLE	208		
O	NW	SW	27	070N	0580W	S	MERTENS THOMAS R. & PAUL E.	190		
P	SW	SW	28	070N	0580W	S	MERTENS RAYMOND	190		
Q	NE	NW	30	070N	0580W	S	THOMAS LEE	136		
R			31	070N	0580W	S	SCHMEECKLE G.	912		
S	NW	NW	34	070N	0580W	S	MERTENS RAYMOND J	103		
T	NW	NW	34	070N	0580W	S	MERTENS RAYMOND J	100	20	100

Letter=Choice | F10=Mark 1| PgUp/PgDn=±20 | UpAr/DnAr =±1 |Esc=Quit