



BAYSWATER

Bayswater Exploration & Production, LLC

DJ Basin

COT EAST Pad

COT E Q-30-29HC

Wellbore #1

Plan: Design #1

Standard Planning Report

18 September, 2019



Pad Name: COT EAST Pad
Well Name: COT E Q-30-29HC
Ground Level: 4946.0
SHL Latitude: 40° 32' 38.684 N
SHL Longitude: 104° 49' 29.305 W

SECTION DETAILS

Sec	MD	Inc	Azi	TVD	+N/-S	+E/-W	Dleg	TFace	VSect	Target
1	0.0	0.00	0.00	0.0	0.0	0.0	0.00	0.00	0.0	
2	1500.0	0.00	0.00	1500.0	0.0	0.0	0.00	0.00	0.0	
3	1855.0	7.10	136.62	1854.1	-16.0	15.1	2.00	136.62	15.8	
4	6964.1	7.10	136.62	6924.0	-475.0	448.8	0.00	0.00	469.3	
5	7815.2	89.89	89.01	7447.0	-513.3	1019.4	10.00	-47.84	1041.0	COT E Q-30-29HC LP
6	15467.5	89.89	89.01	7462.0	-381.7	8670.6	0.00	0.00	8679.0	COT E Q-30-29HC PBHL

DESIGN TARGET DETAILS

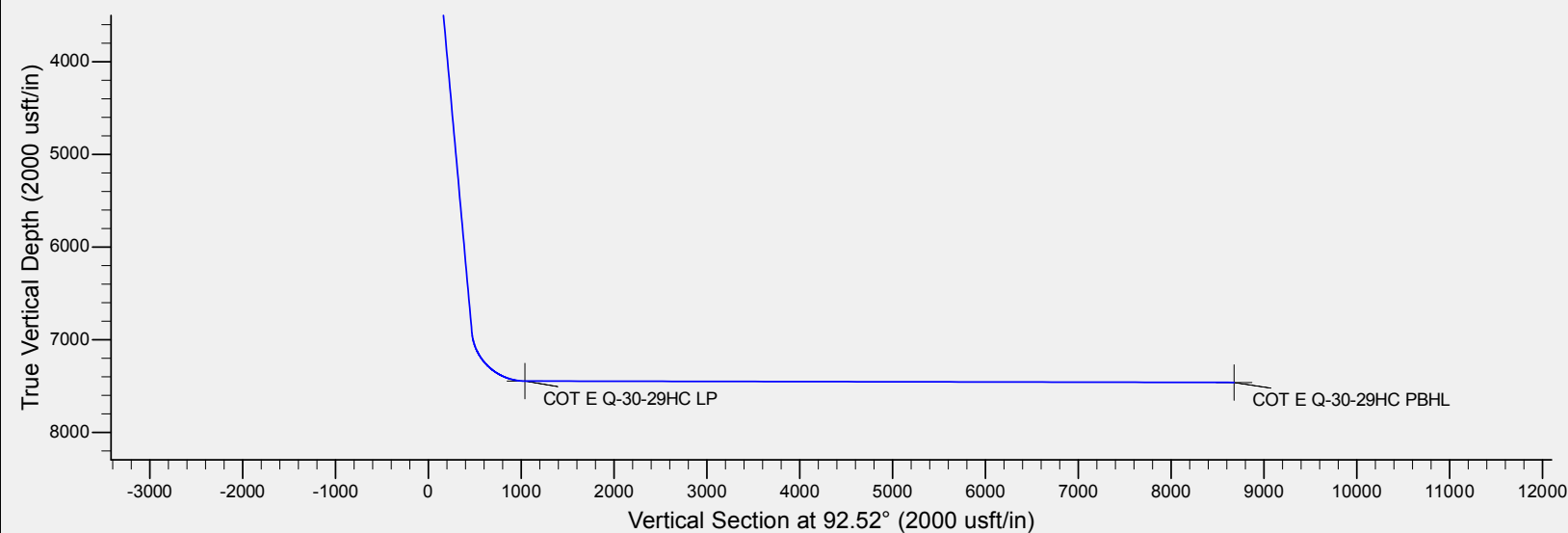
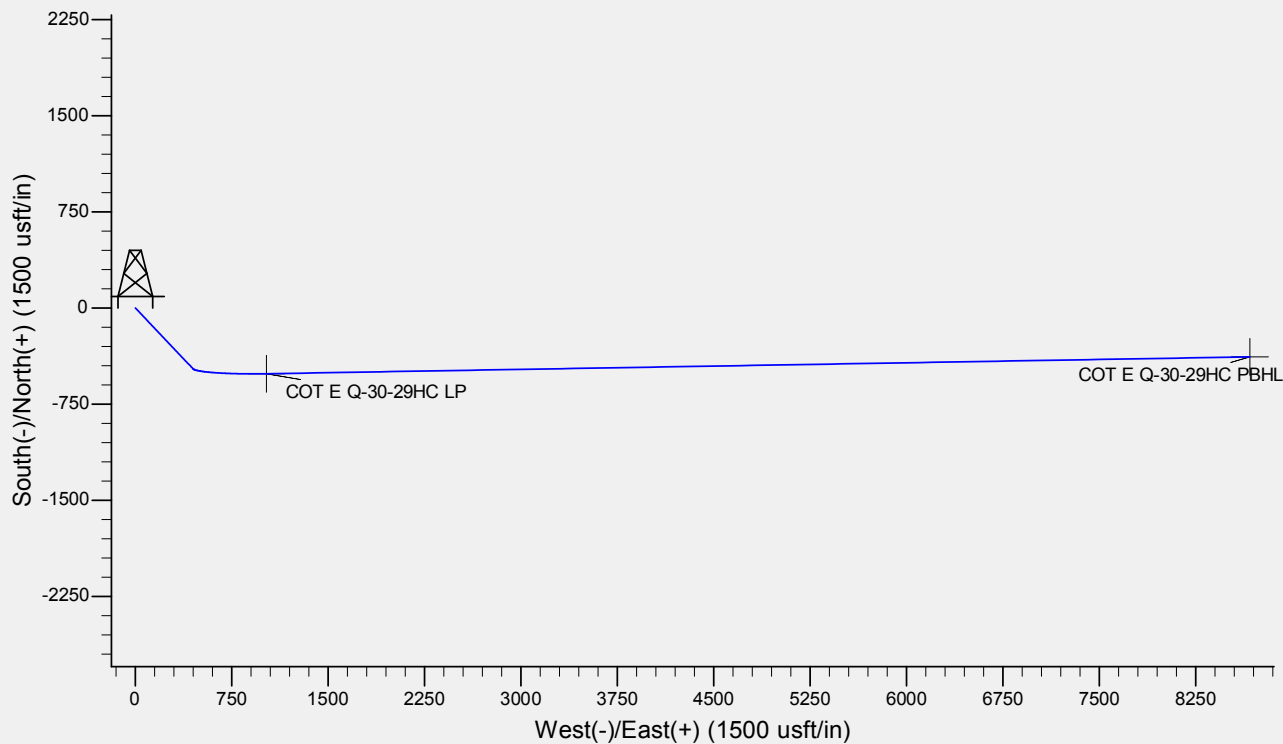
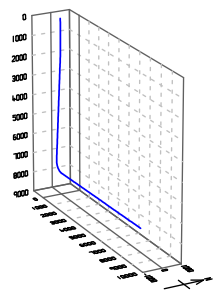
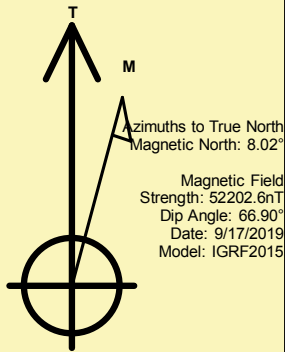
Name	TVD	+N/-S	+E/-W	Northing	Easting	Latitude	Longitude	Shape
COT E Q-30-29HC LP	7447.0	-513.3	1019.4	1441257.69	3188670.07	40° 32' 33.612 N	104° 49' 16.100 W	Point
COT E Q-30-29HC PBHL	- plan hits target center 7462.0	-381.7	8670.6	1441447.51	3196320.06	40° 32' 34.897 N	104° 47' 36.992 W	Point
	- plan hits target center							

REFERENCE INFORMATION

Co-ordinate (N/E) Reference: Well COT E Q-30-29HC, True North
Vertical (TVD) Reference: WELL @ 4946.0usft (Original Well Elev)
Section (VS) Reference: Slot - (0.0N, 0.0E)
Measured Depth Reference: WELL @ 4946.0usft (Original Well Elev)
Calculation Method: Minimum Curvature

CASING DETAILS

No casing data is available





Database:	EDM	Local Co-ordinate Reference:	Well COT E Q-30-29HC
Company:	Bayswater Exploration & Production, LLC	TVD Reference:	WELL @ 4946.0usft (Original Well Elev)
Project:	DJ Basin	MD Reference:	WELL @ 4946.0usft (Original Well Elev)
Site:	COT EAST Pad	North Reference:	True
Well:	COT E Q-30-29HC	Survey Calculation Method:	Minimum Curvature
Wellbore:	Wellbore #1		
Design:	Design #1		

Project	DJ Basin, DJ Basin		
Map System:	US State Plane 1983	System Datum:	Mean Sea Level
Geo Datum:	North American Datum 1983		
Map Zone:	Colorado Northern Zone		

Site		COT EAST Pad			
Site Position:		Northing:	1,441,808.02 usft	Latitude:	40° 32' 39.127 N
From:	Lat/Long	Easting:	3,187,646.71 usft	Longitude:	104° 49' 29.302 W
Position Uncertainty:	0.0 usft	Slot Radius:	13-3/16 "	Grid Convergence:	0.44 °

Well	COT E Q-30-29HC					
Well Position	+N/-S	-44.8 usft	Northing:	1,441,763.18 usft	Latitude:	40° 32' 38.684 N
	+E/-W	-0.3 usft	Easting:	3,187,646.77 usft	Longitude:	104° 49' 29.305 W
Position Uncertainty		0.0 usft	Wellhead Elevation:		Ground Level:	4,946.0 usft

Wellbore	Wellbore #1				
Magnetics	Model Name	Sample Date	Declination (°)	Dip Angle (°)	Field Strength (nT)
	IGRF2015	9/17/2019	8.02	66.90	52,202.60389746

Design	Design #1			
Audit Notes:				
Version:	Phase:	PLAN	Tie On Depth:	0.0
Vertical Section:	Depth From (TVD) (usft)	+N/-S (usft)	+E/-W (usft)	Direction (°)
	0.0	0.0	0.0	92.52

Plan Survey Tool Program	Date	9/17/2019		
Depth From (usft)	Depth To (usft)	Survey (Wellbore)	Tool Name	Remarks
1	0.0	15,467.5	Design #1 (Wellbore #1)	MWD
				OWSG MWD - Standard

Plan Sections										
Measured Depth (usft)	Inclination (°)	Azimuth (°)	Vertical Depth (usft)	+N/-S (usft)	+E/-W (usft)	Dogleg Rate (°/100usft)	Build Rate (°/100usft)	Turn Rate (°/100usft)	TFO (°)	Target
0.0	0.00	0.00	0.0	0.0	0.0	0.00	0.00	0.00	0.00	
1,500.0	0.00	0.00	1,500.0	0.0	0.0	0.00	0.00	0.00	0.00	
1,855.0	7.10	136.62	1,854.1	-16.0	15.1	2.00	2.00	0.00	136.62	
6,964.1	7.10	136.62	6,924.0	-475.0	448.8	0.00	0.00	0.00	0.00	
7,815.2	89.89	89.01	7,447.0	-513.3	1,019.4	10.00	9.73	-5.59	-47.84	COT E Q-30-29HC LF
15,467.5	89.89	89.01	7,462.0	-381.7	8,670.6	0.00	0.00	0.00	0.00	COT E Q-30-29HC PI



Database:	EDM	Local Co-ordinate Reference:	Well COT E Q-30-29HC
Company:	Bayswater Exploration & Production, LLC	TVD Reference:	WELL @ 4946.0usft (Original Well Elev)
Project:	DJ Basin	MD Reference:	WELL @ 4946.0usft (Original Well Elev)
Site:	COT EAST Pad	North Reference:	True
Well:	COT E Q-30-29HC	Survey Calculation Method:	Minimum Curvature
Wellbore:	Wellbore #1		
Design:	Design #1		

Planned Survey									
Measured Depth (usft)	Inclination (°)	Azimuth (°)	Vertical Depth (usft)	+N/-S (usft)	+E/-W (usft)	Vertical Section (usft)	Dogleg Rate (°/100usft)	Build Rate (°/100usft)	Turn Rate (°/100usft)
0.0	0.00	0.00	0.0	0.0	0.0	0.0	0.00	0.00	0.00
100.0	0.00	0.00	100.0	0.0	0.0	0.0	0.00	0.00	0.00
200.0	0.00	0.00	200.0	0.0	0.0	0.0	0.00	0.00	0.00
300.0	0.00	0.00	300.0	0.0	0.0	0.0	0.00	0.00	0.00
400.0	0.00	0.00	400.0	0.0	0.0	0.0	0.00	0.00	0.00
500.0	0.00	0.00	500.0	0.0	0.0	0.0	0.00	0.00	0.00
600.0	0.00	0.00	600.0	0.0	0.0	0.0	0.00	0.00	0.00
700.0	0.00	0.00	700.0	0.0	0.0	0.0	0.00	0.00	0.00
800.0	0.00	0.00	800.0	0.0	0.0	0.0	0.00	0.00	0.00
900.0	0.00	0.00	900.0	0.0	0.0	0.0	0.00	0.00	0.00
1,000.0	0.00	0.00	1,000.0	0.0	0.0	0.0	0.00	0.00	0.00
1,100.0	0.00	0.00	1,100.0	0.0	0.0	0.0	0.00	0.00	0.00
1,200.0	0.00	0.00	1,200.0	0.0	0.0	0.0	0.00	0.00	0.00
1,300.0	0.00	0.00	1,300.0	0.0	0.0	0.0	0.00	0.00	0.00
1,400.0	0.00	0.00	1,400.0	0.0	0.0	0.0	0.00	0.00	0.00
1,500.0	0.00	0.00	1,500.0	0.0	0.0	0.0	0.00	0.00	0.00
1,600.0	2.00	136.62	1,600.0	-1.3	1.2	1.3	2.00	2.00	0.00
1,700.0	4.00	136.62	1,699.8	-5.1	4.8	5.0	2.00	2.00	0.00
1,800.0	6.00	136.62	1,799.5	-11.4	10.8	11.3	2.00	2.00	0.00
1,855.0	7.10	136.62	1,854.1	-16.0	15.1	15.8	2.00	2.00	0.00
1,900.0	7.10	136.62	1,898.7	-20.0	18.9	19.8	0.00	0.00	0.00
2,000.0	7.10	136.62	1,998.0	-29.0	27.4	28.6	0.00	0.00	0.00
2,100.0	7.10	136.62	2,097.2	-38.0	35.9	37.5	0.00	0.00	0.00
2,200.0	7.10	136.62	2,196.4	-47.0	44.4	46.4	0.00	0.00	0.00
2,300.0	7.10	136.62	2,295.7	-56.0	52.9	55.3	0.00	0.00	0.00
2,400.0	7.10	136.62	2,394.9	-64.9	61.4	64.2	0.00	0.00	0.00
2,500.0	7.10	136.62	2,494.1	-73.9	69.8	73.0	0.00	0.00	0.00
2,600.0	7.10	136.62	2,593.4	-82.9	78.3	81.9	0.00	0.00	0.00
2,700.0	7.10	136.62	2,692.6	-91.9	86.8	90.8	0.00	0.00	0.00
2,800.0	7.10	136.62	2,791.8	-100.9	95.3	99.7	0.00	0.00	0.00
2,900.0	7.10	136.62	2,891.1	-109.9	103.8	108.5	0.00	0.00	0.00
3,000.0	7.10	136.62	2,990.3	-118.9	112.3	117.4	0.00	0.00	0.00
3,100.0	7.10	136.62	3,089.5	-127.8	120.8	126.3	0.00	0.00	0.00
3,200.0	7.10	136.62	3,188.8	-136.8	129.3	135.2	0.00	0.00	0.00
3,300.0	7.10	136.62	3,288.0	-145.8	137.8	144.0	0.00	0.00	0.00
3,400.0	7.10	136.62	3,387.2	-154.8	146.3	152.9	0.00	0.00	0.00
3,500.0	7.10	136.62	3,486.5	-163.8	154.7	161.8	0.00	0.00	0.00
3,600.0	7.10	136.62	3,585.7	-172.8	163.2	170.7	0.00	0.00	0.00
3,700.0	7.10	136.62	3,684.9	-181.7	171.7	179.6	0.00	0.00	0.00
3,800.0	7.10	136.62	3,784.2	-190.7	180.2	188.4	0.00	0.00	0.00
3,900.0	7.10	136.62	3,883.4	-199.7	188.7	197.3	0.00	0.00	0.00
4,000.0	7.10	136.62	3,982.6	-208.7	197.2	206.2	0.00	0.00	0.00
4,100.0	7.10	136.62	4,081.9	-217.7	205.7	215.1	0.00	0.00	0.00
4,200.0	7.10	136.62	4,181.1	-226.7	214.2	223.9	0.00	0.00	0.00
4,300.0	7.10	136.62	4,280.3	-235.7	222.7	232.8	0.00	0.00	0.00
4,400.0	7.10	136.62	4,379.6	-244.6	231.2	241.7	0.00	0.00	0.00
4,500.0	7.10	136.62	4,478.8	-253.6	239.6	250.6	0.00	0.00	0.00
4,600.0	7.10	136.62	4,578.0	-262.6	248.1	259.4	0.00	0.00	0.00
4,700.0	7.10	136.62	4,677.3	-271.6	256.6	268.3	0.00	0.00	0.00
4,800.0	7.10	136.62	4,776.5	-280.6	265.1	277.2	0.00	0.00	0.00
4,900.0	7.10	136.62	4,875.7	-289.6	273.6	286.1	0.00	0.00	0.00
5,000.0	7.10	136.62	4,975.0	-298.6	282.1	294.9	0.00	0.00	0.00
5,100.0	7.10	136.62	5,074.2	-307.5	290.6	303.8	0.00	0.00	0.00
5,200.0	7.10	136.62	5,173.4	-316.5	299.1	312.7	0.00	0.00	0.00



Database:	EDM	Local Co-ordinate Reference:	Well COT E Q-30-29HC
Company:	Bayswater Exploration & Production, LLC	TVD Reference:	WELL @ 4946.0usft (Original Well Elev)
Project:	DJ Basin	MD Reference:	WELL @ 4946.0usft (Original Well Elev)
Site:	COT EAST Pad	North Reference:	True
Well:	COT E Q-30-29HC	Survey Calculation Method:	Minimum Curvature
Wellbore:	Wellbore #1		
Design:	Design #1		

Planned Survey									
Measured Depth (usft)	Inclination (°)	Azimuth (°)	Vertical Depth (usft)	+N/-S (usft)	+E/-W (usft)	Vertical Section (usft)	Dogleg Rate (°/100usft)	Build Rate (°/100usft)	Turn Rate (°/100usft)
5,300.0	7.10	136.62	5,272.7	-325.5	307.6	321.6	0.00	0.00	0.00
5,400.0	7.10	136.62	5,371.9	-334.5	316.1	330.5	0.00	0.00	0.00
5,500.0	7.10	136.62	5,471.1	-343.5	324.5	339.3	0.00	0.00	0.00
5,600.0	7.10	136.62	5,570.4	-352.5	333.0	348.2	0.00	0.00	0.00
5,700.0	7.10	136.62	5,669.6	-361.5	341.5	357.1	0.00	0.00	0.00
5,800.0	7.10	136.62	5,768.8	-370.4	350.0	366.0	0.00	0.00	0.00
5,900.0	7.10	136.62	5,868.1	-379.4	358.5	374.8	0.00	0.00	0.00
6,000.0	7.10	136.62	5,967.3	-388.4	367.0	383.7	0.00	0.00	0.00
6,100.0	7.10	136.62	6,066.5	-397.4	375.5	392.6	0.00	0.00	0.00
6,200.0	7.10	136.62	6,165.8	-406.4	384.0	401.5	0.00	0.00	0.00
6,300.0	7.10	136.62	6,265.0	-415.4	392.5	410.3	0.00	0.00	0.00
6,400.0	7.10	136.62	6,364.2	-424.4	400.9	419.2	0.00	0.00	0.00
6,500.0	7.10	136.62	6,463.5	-433.3	409.4	428.1	0.00	0.00	0.00
6,600.0	7.10	136.62	6,562.7	-442.3	417.9	437.0	0.00	0.00	0.00
6,700.0	7.10	136.62	6,661.9	-451.3	426.4	445.9	0.00	0.00	0.00
6,800.0	7.10	136.62	6,761.2	-460.3	434.9	454.7	0.00	0.00	0.00
6,900.0	7.10	136.62	6,860.4	-469.3	443.4	463.6	0.00	0.00	0.00
6,964.1	7.10	136.62	6,924.0	-475.0	448.8	469.3	0.00	0.00	0.00
7,000.0	9.87	120.92	6,959.5	-478.2	453.0	473.6	10.00	7.72	-43.74
7,100.0	19.08	104.43	7,056.3	-486.7	476.3	497.2	10.00	9.21	-16.49
7,200.0	28.81	98.63	7,147.6	-494.5	516.0	537.3	10.00	9.73	-5.80
7,300.0	38.67	95.61	7,230.6	-501.1	571.1	592.6	10.00	9.86	-3.03
7,400.0	48.58	93.66	7,302.9	-506.6	639.8	661.4	10.00	9.91	-1.95
7,500.0	58.52	92.23	7,362.3	-510.7	720.0	741.8	10.00	9.93	-1.43
7,600.0	68.47	91.09	7,406.8	-513.2	809.3	831.1	10.00	9.95	-1.15
7,700.0	78.42	90.08	7,435.3	-514.2	905.1	926.8	10.00	9.95	-1.00
7,800.0	88.38	89.15	7,446.8	-513.5	1,004.3	1,025.9	10.00	9.96	-0.93
7,815.2	89.89	89.01	7,447.0	-513.3	1,019.4	1,041.0	10.00	9.96	-0.92
COT E Q-30-29HC LP									
7,900.0	89.89	89.01	7,447.2	-511.8	1,104.2	1,125.7	0.00	0.00	0.00
8,000.0	89.89	89.01	7,447.4	-510.1	1,204.2	1,225.5	0.00	0.00	0.00
8,100.0	89.89	89.01	7,447.6	-508.4	1,304.2	1,325.3	0.00	0.00	0.00
8,200.0	89.89	89.01	7,447.8	-506.6	1,404.2	1,425.1	0.00	0.00	0.00
8,300.0	89.89	89.01	7,448.0	-504.9	1,504.2	1,524.9	0.00	0.00	0.00
8,400.0	89.89	89.01	7,448.1	-503.2	1,604.2	1,624.8	0.00	0.00	0.00
8,500.0	89.89	89.01	7,448.3	-501.5	1,704.2	1,724.6	0.00	0.00	0.00
8,600.0	89.89	89.01	7,448.5	-499.8	1,804.1	1,824.4	0.00	0.00	0.00
8,700.0	89.89	89.01	7,448.7	-498.1	1,904.1	1,924.2	0.00	0.00	0.00
8,800.0	89.89	89.01	7,448.9	-496.3	2,004.1	2,024.0	0.00	0.00	0.00
8,900.0	89.89	89.01	7,449.1	-494.6	2,104.1	2,123.8	0.00	0.00	0.00
9,000.0	89.89	89.01	7,449.3	-492.9	2,204.1	2,223.6	0.00	0.00	0.00
9,100.0	89.89	89.01	7,449.5	-491.2	2,304.1	2,323.4	0.00	0.00	0.00
9,200.0	89.89	89.01	7,449.7	-489.5	2,404.1	2,423.3	0.00	0.00	0.00
9,300.0	89.89	89.01	7,449.9	-487.7	2,504.0	2,523.1	0.00	0.00	0.00
9,400.0	89.89	89.01	7,450.1	-486.0	2,604.0	2,622.9	0.00	0.00	0.00
9,500.0	89.89	89.01	7,450.3	-484.3	2,704.0	2,722.7	0.00	0.00	0.00
9,600.0	89.89	89.01	7,450.5	-482.6	2,804.0	2,822.5	0.00	0.00	0.00
9,700.0	89.89	89.01	7,450.7	-480.9	2,904.0	2,922.3	0.00	0.00	0.00
9,800.0	89.89	89.01	7,450.9	-479.1	3,004.0	3,022.1	0.00	0.00	0.00
9,900.0	89.89	89.01	7,451.1	-477.4	3,103.9	3,121.9	0.00	0.00	0.00
10,000.0	89.89	89.01	7,451.3	-475.7	3,203.9	3,221.8	0.00	0.00	0.00
10,100.0	89.89	89.01	7,451.5	-474.0	3,303.9	3,321.6	0.00	0.00	0.00
10,200.0	89.89	89.01	7,451.7	-472.3	3,403.9	3,421.4	0.00	0.00	0.00



Database:	EDM	Local Co-ordinate Reference:	Well COT E Q-30-29HC
Company:	Bayswater Exploration & Production, LLC	TVD Reference:	WELL @ 4946.0usft (Original Well Elev)
Project:	DJ Basin	MD Reference:	WELL @ 4946.0usft (Original Well Elev)
Site:	COT EAST Pad	North Reference:	True
Well:	COT E Q-30-29HC	Survey Calculation Method:	Minimum Curvature
Wellbore:	Wellbore #1		
Design:	Design #1		

Planned Survey									
Measured Depth (usft)	Inclination (°)	Azimuth (°)	Vertical Depth (usft)	+N/-S (usft)	+E/-W (usft)	Vertical Section (usft)	Dogleg Rate (°/100usft)	Build Rate (°/100usft)	Turn Rate (°/100usft)
10,300.0	89.89	89.01	7,451.9	-470.5	3,503.9	3,521.2	0.00	0.00	0.00
10,400.0	89.89	89.01	7,452.1	-468.8	3,603.9	3,621.0	0.00	0.00	0.00
10,500.0	89.89	89.01	7,452.3	-467.1	3,703.9	3,720.8	0.00	0.00	0.00
10,600.0	89.89	89.01	7,452.5	-465.4	3,803.8	3,820.6	0.00	0.00	0.00
10,700.0	89.89	89.01	7,452.7	-463.7	3,903.8	3,920.4	0.00	0.00	0.00
10,800.0	89.89	89.01	7,452.9	-461.9	4,003.8	4,020.3	0.00	0.00	0.00
10,900.0	89.89	89.01	7,453.0	-460.2	4,103.8	4,120.1	0.00	0.00	0.00
11,000.0	89.89	89.01	7,453.2	-458.5	4,203.8	4,219.9	0.00	0.00	0.00
11,100.0	89.89	89.01	7,453.4	-456.8	4,303.8	4,319.7	0.00	0.00	0.00
11,200.0	89.89	89.01	7,453.6	-455.1	4,403.8	4,419.5	0.00	0.00	0.00
11,300.0	89.89	89.01	7,453.8	-453.3	4,503.7	4,519.3	0.00	0.00	0.00
11,400.0	89.89	89.01	7,454.0	-451.6	4,603.7	4,619.1	0.00	0.00	0.00
11,500.0	89.89	89.01	7,454.2	-449.9	4,703.7	4,718.9	0.00	0.00	0.00
11,600.0	89.89	89.01	7,454.4	-448.2	4,803.7	4,818.8	0.00	0.00	0.00
11,700.0	89.89	89.01	7,454.6	-446.5	4,903.7	4,918.6	0.00	0.00	0.00
11,800.0	89.89	89.01	7,454.8	-444.8	5,003.7	5,018.4	0.00	0.00	0.00
11,900.0	89.89	89.01	7,455.0	-443.0	5,103.6	5,118.2	0.00	0.00	0.00
12,000.0	89.89	89.01	7,455.2	-441.3	5,203.6	5,218.0	0.00	0.00	0.00
12,100.0	89.89	89.01	7,455.4	-439.6	5,303.6	5,317.8	0.00	0.00	0.00
12,200.0	89.89	89.01	7,455.6	-437.9	5,403.6	5,417.6	0.00	0.00	0.00
12,300.0	89.89	89.01	7,455.8	-436.2	5,503.6	5,517.4	0.00	0.00	0.00
12,400.0	89.89	89.01	7,456.0	-434.4	5,603.6	5,617.3	0.00	0.00	0.00
12,500.0	89.89	89.01	7,456.2	-432.7	5,703.6	5,717.1	0.00	0.00	0.00
12,600.0	89.89	89.01	7,456.4	-431.0	5,803.5	5,816.9	0.00	0.00	0.00
12,700.0	89.89	89.01	7,456.6	-429.3	5,903.5	5,916.7	0.00	0.00	0.00
12,800.0	89.89	89.01	7,456.8	-427.6	6,003.5	6,016.5	0.00	0.00	0.00
12,900.0	89.89	89.01	7,457.0	-425.8	6,103.5	6,116.3	0.00	0.00	0.00
13,000.0	89.89	89.01	7,457.2	-424.1	6,203.5	6,216.1	0.00	0.00	0.00
13,100.0	89.89	89.01	7,457.4	-422.4	6,303.5	6,315.9	0.00	0.00	0.00
13,200.0	89.89	89.01	7,457.6	-420.7	6,403.5	6,415.8	0.00	0.00	0.00
13,300.0	89.89	89.01	7,457.8	-419.0	6,503.4	6,515.6	0.00	0.00	0.00
13,400.0	89.89	89.01	7,457.9	-417.2	6,603.4	6,615.4	0.00	0.00	0.00
13,500.0	89.89	89.01	7,458.1	-415.5	6,703.4	6,715.2	0.00	0.00	0.00
13,600.0	89.89	89.01	7,458.3	-413.8	6,803.4	6,815.0	0.00	0.00	0.00
13,700.0	89.89	89.01	7,458.5	-412.1	6,903.4	6,914.8	0.00	0.00	0.00
13,800.0	89.89	89.01	7,458.7	-410.4	7,003.4	7,014.6	0.00	0.00	0.00
13,900.0	89.89	89.01	7,458.9	-408.6	7,103.3	7,114.4	0.00	0.00	0.00
14,000.0	89.89	89.01	7,459.1	-406.9	7,203.3	7,214.3	0.00	0.00	0.00
14,100.0	89.89	89.01	7,459.3	-405.2	7,303.3	7,314.1	0.00	0.00	0.00
14,200.0	89.89	89.01	7,459.5	-403.5	7,403.3	7,413.9	0.00	0.00	0.00
14,300.0	89.89	89.01	7,459.7	-401.8	7,503.3	7,513.7	0.00	0.00	0.00
14,400.0	89.89	89.01	7,459.9	-400.1	7,603.3	7,613.5	0.00	0.00	0.00
14,500.0	89.89	89.01	7,460.1	-398.3	7,703.3	7,713.3	0.00	0.00	0.00
14,600.0	89.89	89.01	7,460.3	-396.6	7,803.2	7,813.1	0.00	0.00	0.00
14,700.0	89.89	89.01	7,460.5	-394.9	7,903.2	7,913.0	0.00	0.00	0.00
14,800.0	89.89	89.01	7,460.7	-393.2	8,003.2	8,012.8	0.00	0.00	0.00
14,900.0	89.89	89.01	7,460.9	-391.5	8,103.2	8,112.6	0.00	0.00	0.00
15,000.0	89.89	89.01	7,461.1	-389.7	8,203.2	8,212.4	0.00	0.00	0.00
15,100.0	89.89	89.01	7,461.3	-388.0	8,303.2	8,312.2	0.00	0.00	0.00
15,200.0	89.89	89.01	7,461.5	-386.3	8,403.2	8,412.0	0.00	0.00	0.00
15,300.0	89.89	89.01	7,461.7	-384.6	8,503.1	8,511.8	0.00	0.00	0.00
15,400.0	89.89	89.01	7,461.9	-382.9	8,603.1	8,611.6	0.00	0.00	0.00
15,467.5	89.89	89.01	7,462.0	-381.7	8,670.6	8,679.0	0.00	0.00	0.00
COT E Q-30-29HC PBHL									



Database:	EDM	Local Co-ordinate Reference:	Well COT E Q-30-29HC
Company:	Bayswater Exploration & Production, LLC	TVD Reference:	WELL @ 4946.0usft (Original Well Elev)
Project:	DJ Basin	MD Reference:	WELL @ 4946.0usft (Original Well Elev)
Site:	COT EAST Pad	North Reference:	True
Well:	COT E Q-30-29HC	Survey Calculation Method:	Minimum Curvature
Wellbore:	Wellbore #1		
Design:	Design #1		

Planned Survey									
Measured Depth (usft)	Inclination (°)	Azimuth (°)	Vertical Depth (usft)	+N/-S (usft)	+E/-W (usft)	Vertical Section (usft)	Dogleg Rate (°/100usft)	Build Rate (°/100usft)	Turn Rate (°/100usft)

Design Targets									
Target Name - hit/miss target - Shape	Dip Angle (°)	Dip Dir. (°)	TVD (usft)	+N/-S (usft)	+E/-W (usft)	Northing (usft)	Easting (usft)	Latitude	Longitude
COT E Q-30-29HC LP - plan hits target center - Point	0.00	0.00	7,447.0	-513.3	1,019.4	1,441,257.69	3,188,670.08	40° 32' 33.612 N	104° 49' 16.100 W
COT E Q-30-29HC PBH - plan hits target center - Point	0.00	0.00	7,462.0	-381.7	8,670.6	1,441,447.51	3,196,320.06	40° 32' 34.897 N	104° 47' 36.992 W