



HighPoint Operating Corporation

Intermediate Post Job Report

RSU Anschutz Fed 4-62-02-4956C

S:3 T:4N R:62W Weld CO

Quote #:

I Execution #:



HighPoint Operating Corporation

Attention: Mr. Matthew Schwartz | (303) 312-8142 | mschwartz@hpres.com

Highpoint Operation Corporation | 1099 18th St. | Denver, CO. 80202

Dear Mr. Matthew Schwartz,

Thank you for the opportunity to provide cementing services on this well. BJ Services strives to achieve complete customer satisfaction. If you have any questions regarding the services or data provided, please contact BJ Services at any time.

Sincerely,
Jason Creel
Field Engineer I | (307) 256-0306 | jason.creel@bjservices.com

Field Office 1716 East Allison Rd., Cheyenne WY, 82007
Phone: (307) 638-5585

Sales Office 999 18th St. Suite 1200 Denver, CO 80202
Phone: (281) 408-2361

Cementing Treatment



Start Date	8/10/2018	Well	RSU ANSCHUTZ FED 4-62-02-4956C
End Date	8/10/2018	API#	05-123-46840
Client	HighPoint Operating Corporation	County	WELD
Service Sup.	Hector Montoya	State/Province	CO
District	Cheyenne, WY	Execution ID	EXC-09648-X5J2Z602
Type of Job	Intermediate	Project ID	PRJ1009469

WELL GEOMETRY

Type	ID (in)	OD (in)	Wt. (lb/ft)	MD (ft)	TVD (ft)	Excess(%)	Grade
Previous Casing	8.92	9.63	36.00	830.00	843.00		
Open Hole	8.75	0.00	0.00	6,492.00	6,133.00	20.00	
Casing	6.37	7.00	23.00	6,477.00	6,133.00		J-55

Shoe Length (ft): 42.00

HARDWARE

Bottom Plug Used?	Yes	Centralizers Type	Bow
Bottom Plug Provided By	Rig	Landing Collar Depth (ft)	6,491
Bottom Plug Size	7.000	Job Pumped Through	Manifold
Centralizers Used	Yes	Top Connection Thread	LTC
Centralizers Quantity	13.00	Top Connection Size	7

CIRCULATION PRIOR TO JOB

Well Circulated By	Rig	PV Mud Out	4
Circulation Prior to Job	Yes	YP Mud In	1
Circulation Time (min)	1.50	YP Mud Out	1
Circulation Rate (bpm)	7.00	Solids Present at End of Circulation	Yes
Lost Circulation Prior to Cement Job	No	10 sec SGS	1.00
Mud Density In (ppg)	1.00	10 min SGS	2.00
Mud Density Out (ppg)	10.00	Flare Prior to/during the Cement Job	No
PV Mud In	4	Gas Present	No

TEMPERATURE

Ambient Temperature (°F)	70.00	Slurry Cement Temperature (°F)	70.00
Mix Water Temperature (°F)	65.00	Flow Line Temperature (°F)	122.00

Cementing Treatment



BJ FLUID DETAILS

Fluid Type	Fluid Name	Density (ppg)	Yield (Cu Ft/sk)	H2O Req. (gals/sk)	Planned Top of Fluid (Ft)	Length (Ft)	Vol (sk)	Vol (Cu Ft)	Vol (bbls)
Spacer / Pre Flush / Flush	IntegraGuard EZ Spacer	11.0000			0.00				20.0000
Lead Slurry	BJCem I100.3.01C	12.5000	2.0735	11.83	600.00	4400	400	791.0000	140.8000
Tail Slurry	BJCem I100.6.01C	15.8000	1.1550	4.98	5,000.00	1533	260	286.0000	50.9000
Displacement Final	Water	8.3300			0.00			0.0000	255.6000

Fluid Type	Fluid Name	Component	Concentration	UOM
Spacer / Pre Flush / Flush	IntegraGuard EZ Spacer	SAND, S-8, Silica Flour, 200 Mesh	180.4300	PPB
Spacer / Pre Flush / Flush	IntegraGuard EZ Spacer	SPACER SURFACTANT, SS-247	0.5000	GPB
Spacer / Pre Flush / Flush	IntegraGuard EZ Spacer	RETARDER, SR-20	1.0200	PPB
Spacer / Pre Flush / Flush	IntegraGuard EZ Spacer	GELLANT WATER, GW-86	0.8000	PPB
Lead Slurry	BJCem I100.3.01C	FOAM PREVENTER, FP-25	0.3000	BWOB
Lead Slurry	BJCem I100.3.01C	RETARDER, SR-20	0.4000	BWOB
Lead Slurry	BJCem I100.3.01C	BONDING AGENT, BA-60	0.3000	BWOB
Lead Slurry	BJCem I100.3.01C	FLUID LOSS, FL-24	0.3000	BWOB
Lead Slurry	BJCem I100.3.01C	CEMENT, ASTM TYPE III	100.0000	PCT
Tail Slurry	BJCem I100.6.01C	DISPERSANT, CD-31	0.2000	BWOB
Tail Slurry	BJCem I100.6.01C	FLUID LOSS, FL-24	0.2000	BWOB
Tail Slurry	BJCem I100.6.01C	FOAM PREVENTER, FP-25	0.3000	BWOB
Tail Slurry	BJCem I100.6.01C	BONDING AGENT, BA-60	0.2000	BWOB
Tail Slurry	BJCem I100.6.01C	RETARDER, R-6	0.1000	BWOB
Tail Slurry	BJCem I100.6.01C	CEMENT, CLASS G	100.0000	PCT

Cementing Treatment



TREATMENT SUMMARY

Fluid	Rate (bpm)	Fluid Vol. (bbls)
IntegraGuard EZ Spacer	5.00	20.00
BJCem I100.3.01C	5.00	140.80
BJCem I100.6.01C	5.00	50.90
Water	5.00	255.60

DISPLACEMENT AND END OF JOB SUMMARY

Displaced By	BJ Services	Cement returns During Job	Full
Calculated Displacement Volume (bbls)	255.00	Method Used to Verify Returns	Visual
Actual Displacement Volume (bbls)	255.00	Amount Bled Back After Job	2.50
Did Float Hold?	Yes	Total Volume Pumped (bbls)	467.30
Bump Plug	Yes	Top Out Cement Spotted	No
Bump Plug Pressure (psi)	2,700.00	Lost Circulation During Cement Job	No
Were Returns Planned at Surface	Yes		

EVENT LOG



Customer Name: HighPoint Operating Corporation

Well Name: RSU ANSCHUTZ FED 4-62-02-4956C

Job Type: Intermediate

Quote ID: QUO-16825-H8H1H2

Plan ID: ORD-09648-X5J2Z6

District: Cheyenne, WY

Execution ID: EXC-09648-X5J2Z602

BJ Supervisor: Hector Montoya

Seq.	Start Dt./Time	Event	Density (ppg)	Pump Rate (bpm)	Pump Vol (bbls)	Pipe Pressure (psi)	Comments
1	08/10/2018 01:00	Callout					BJ crew gets called out and requested on location at 4:30
2	08/10/2018 02:20	Safety Meeting					BJ crew talks about the hazards of driving to location
3	08/10/2018 02:40	Other (See comment)					Depart yard
4	08/10/2018 04:30	Arrive on Location					Arrive on location
5	08/10/2018 04:40	Safety Meeting					BJ crew talks about the hazards of spotting in equipment and rigging up
6	08/10/2018 04:55	Rig Up					Rig up
7	08/10/2018 06:00	Safety Meeting					BJ and rig crew talk about the hazard of pumping the job
8	08/10/2018 06:46	Prime Up	8.3300	2.00	3.00	50.00	Pump 3 bbls of water to fill lines
9	08/10/2018 06:48	Pressure Test					Pressure test pumps and lines to 4000 psi
10	08/10/2018 06:52	Pump Spacer	8.3300	2.00	20.00	180.00	Pump 20 bbls of water spacer
11	08/10/2018 07:01	Pump Spacer	11.0000	3.00	20.00	180.00	Pump 20 bbls of spacer 11 ppg
12	08/10/2018 07:05	Pump Lead Cement	12.5000	5.00	147.00	250.00	Mix up and pump 400 sks of BJcem L100.3.01.C, lead cement at 12.5 ppg, yield 2.07, 11.83 gal/sk, 147 bbls
13	08/10/2018 07:32	Pump Tail Cement	15.8000	5.00	53.00	320.00	Mix up and pump 260sks of BJcem L100.6.01.C, tail cement at 15.8 ppg, yield 1.15, 4.98 gal/sk, 53 bbls
14	08/10/2018 07:45	Other (See comment)					Shutdown line out manifold to drop top plug
15	08/10/2018 07:47	Drop Top Plug					Customer witness plug leave manifold
16	08/10/2018 07:49	Pump Displacement	8.3300	8.00	238.00	1,400.00	Pump 258 bbls of water displacement
17	08/10/2018 08:20	Pump Displacement	8.3300	2.00	20.00	2,000.00	Slow rate the last 20 bbls to 3 bpm

EVENT LOG



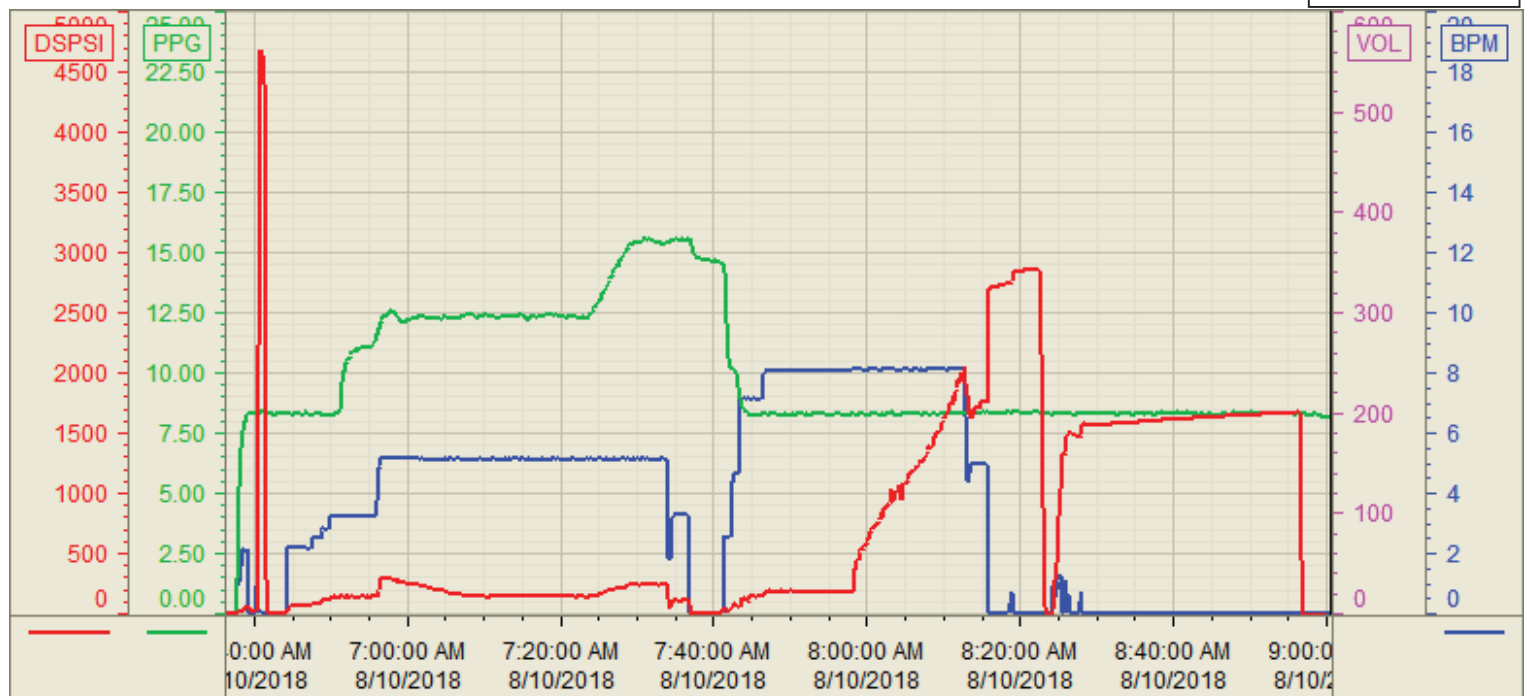
18	08/10/2018 08:25	Land Plug					Bump plug at 2100 psi, took it up to 2700 psi
19	08/10/2018 08:30	Check Floats					Got 2.5 bbls back to the truck
20	08/10/2018 08:34	Pressure Test					Pressure up to 1500 psi for 30 min casing test
21	08/10/2018 09:05	Safety Meeting					Release pressure, BJ crew talked about the hazards of rigging down
22	08/10/2018 09:30	Rig Down					Rig down
23	08/10/2018 10:30	Leave Location					Depart location
24	08/10/2018 10:34	Other (See comment)					Estimated top of tail at 4,492 ft, got 5 bbls of water spacer

Customer: HIGH POINT
Well Number: 4-62-02-4956C
Lease Info: RSU ANSCHUTZ FED



Print Date/Time

8/10/2018 9:19:26 AM



	Name	Y value	X value/time stamp	Tag name Y
1	DS - Press(PSI)	-25.0	8/10/2018 9:00:26 AM	Cementer\DS_DISCHARGE_PRESS_DIAL
2	DH - Density (PPG)	8.21	8/10/2018 9:00:32 AM	Cementer\DENSITY2_ACTUAL_RATE
3	Combined rate (BPM)	0.00	8/10/2018 9:00:32 AM	Cementer\Flow_Combined
4				
5				

Source: Control1 9:19:21 AM