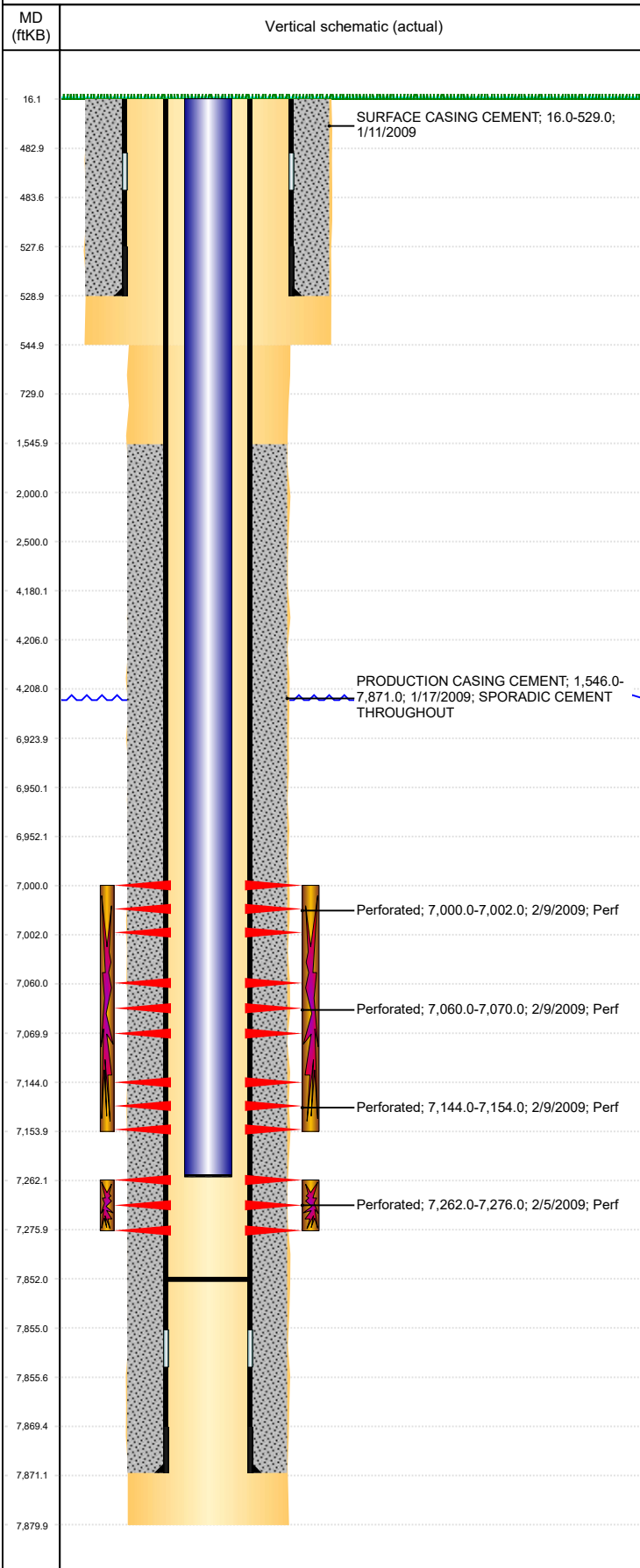


Well Name: BREHON 22-20

DEVIATED, ORIGINAL HOLE, 9/25/2019 9:34:46 AM



Well Header

API 05-123-28155	Business Unit DJ BASIN	District 15	Well Config DEVIATED
KB - GL / MSL (ft... 16.00	Spud Date 1/10/2009	P & A Date	Well Production Status PR
SoRT No			

Comment
PROD CSG CMT SPORADIC CEMENT THROUGHOUT. FIELD OPS NOTICE-FLOWLINES ABANDONED PER RULE 1103, RCVD 6/21/17.

Surface Location (Congressional)

Qtr 3	Qtr 4	Section	Twnshp	Twnsh...	Range	Rng E/...	Actual Latitude (°)	Actual Longitude (°)
	NW	20	4	N	65	W	40.29932960	-104.69379450

Wellbore Sections

Section Des	Size (in)	Act Top, MD (ftKB)	Act Btm, MD (ftKB)
SURFACE	12 1/4	16	545
PRODUCTION	7 7/8	545	7,880

Casing Strings

Csg Des	Run Date	OD (in)	Wt/Len (lb/ft)	Grade	Top, MD (ftKB)	MD (ftKB)
Surface	1/11/2009	8 5/8	24.00	J-55	16.0	529.0
Production	1/17/2009	4 1/2	11.60	I-80	16.0	7,871.0

Cement

Des	Start Date	Top (ftKB)	Btm (ftKB)
SURFACE CASING CEMENT	1/11/2009	16.0	529.0
PRODUCTION CASING CEMENT	1/17/2009	1,546.0	7,871.0

Zone Statuses

Zone Name	Status Date	Status	Fluid Type	Job	Prod Method
NIOBRARA	7/1/2009	PR		DRILLING/COMPLETION - ORIGINAL, 1/10/2009...	
CODELL	7/1/2009	PR		DRILLING/COMPLETION - ORIGINAL, 1/10/2009...	

Perforation Data

Linked Zone	Bnch/Stg	Entered Shot Total	Top (ftKB)	Btm (ftKB)	Date
NIOBRARA, ORIGINAL HOLE	A	6	7,000.00	7,002.00	2/9/2009
NIOBRARA, ORIGINAL HOLE	B	30	7,060.00	7,070.00	2/9/2009
NIOBRARA, ORIGINAL HOLE	C	30	7,144.00	7,154.00	2/9/2009
CODELL, ORIGINAL HOLE		56	7,262.00	7,276.00	2/5/2009

Stimulation Intervals

Zone	Start Date	Top (ftKB)	Btm (ftKB)
NIOBRARA, ORIGINAL HOLE	2/9/2009	7,000.0	7,154.0
CODELL, ORIGINAL HOLE	2/9/2009	7,262.0	7,276.0

Other In Hole

Run Date	Des	OD (in)	Top (ftKB)	Btm (ftKB)
4/5/2019	Plunger Lift	1 7/8		

Logs

Date	Type	Top, MD (ftKB)	Btm, MD (ftKB)
1/17/2009	COMPENSATED DENSITY	2,550.0	7,867.0
1/17/2009	INDUCTION	528.0	7,887.0
2/5/2009	CBL/CCL/GR	1,000.0	7,842.0
2/5/2009	CBL/CCL/GR	1,000.0	3,000.0

Plug Back Total Depths

Date	Type	Com	Depth (ftKB)
2/5/2009	FILL	DEPTH LOGGER ON CBL	7,852.0