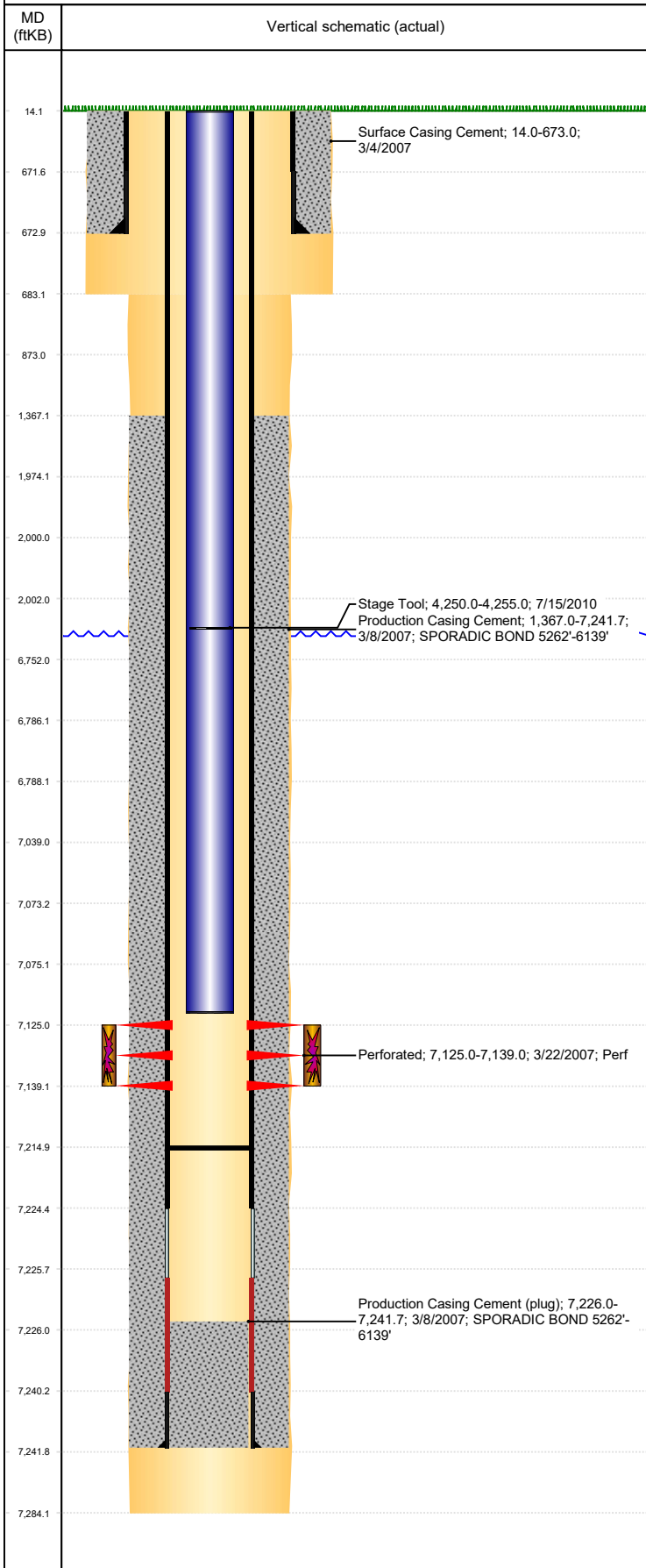


Well Name: BOOTH USX EE25-06

VERTICAL, ORIGINAL HOLE, 9/25/2019 9:33:28 AM



Well Header									
API 05-123-24720		Business Unit DJ BASIN			District 15		Well Config VERTICAL		
KB - GL / MSL (ft... 14.00		Spud Date 3/4/2007		P & A Date		Well Production Status PR			SoRT No
Comment WELLHEAD DATA NEEDS VERIFIED, NOT PROVIDED BY FIELD INVENTORY PROJECT									
MULTIPLE FAILED FISHING AND SWABBING ATTEMPTS DUE TO SAND									
Surface Location (Congressional)									
Qtr 3 SE	Qtr 4 NW	Section 25	Twnshp 7	Twnshp... N	Range 65	Rng E/... W	Actual Latitude (°) 40.54656659	Actual Longitude (°) -104.61303580	
Wellbore Sections									
Section Des			Size (in)			Act Top, MD (ftKB)		Act Btm, MD (ftKB)	
SURFACE			12 1/4			14		683	
PRODUCTION			7 7/8			683		7,284	
Casing Strings									
Csg Des			Run Date		OD (in)	Wt/Len (lb/ft)	Grade	Top, MD (ftKB)	MD (ftKB)
Surface			3/4/2007		8 5/8	24.00	J-55	14.0	673.0
Production			3/8/2007		4 1/2	11.60	M-80	14.0	7,241.7
Cement									
Des					Start Date		Top (ftKB)		Btm (ftKB)
Surface Casing Cement					3/4/2007		14.0		673.0
Production Casing Cement					3/8/2007		1,367.0		7,241.7
Zone Statuses									
Zone Name		Status Date		Status	Fluid Type		Job		Prod Method
CODELL		5/2/2007		PR			DRILLING/COMPLETION - ORIGINAL, 3/4/2007...		
Perforation Data									
Linked Zone			Bnch/Stg	Entered Shot Total		Top (ftKB)		Btm (ftKB)	Date
CODELL, ORIGINAL HOLE				56		7,125.00		7,139.00	3/22/2007
Stimulation Intervals									
Zone				Start Date			Top (ftKB)		Btm (ftKB)
				3/30/2007			7,125.0		7,139.0
CODELL, ORIGINAL HOLE				3/30/2007					
Other In Hole									
Run Date		Des				OD (in)	Top (ftKB)		Btm (ftKB)
3/27/2019		Plunger Lift				1.89			
Logs									
Date		Type					Top, MD (ftKB)		Btm, MD (ftKB)
3/8/2007		COMPENSATED DENSITY					2,600.0		7,243.0
3/8/2007		INDUCTION					673.0		7,263.0
3/22/2007		CBL/CCL/GR					1,200.0		7,214.0
Plug Back Total Depths									
Date		Type			Com				Depth (ftKB)
3/21/2007		FILL			TAGGED FILL				7,226.0
3/22/2007		FILL			DEPTH LOGGER ON CBL				7,215.0