



# HighPoint Operating Corporation

## Production Post Job Report

---

RSU Anschutz Fed 4-62-02-4841CN

S:3 T:4N R:62W Weld CO

Quote #:

I Execution #:

---



# HighPoint Operating Corporation

Attention: Mr. Matthew Schwartz | (303) 312-8142 | [mschwartz@hpres.com](mailto:mschwartz@hpres.com)

Highpoint Operation Corporation | 1099 18th St. | Denver, CO. 80202

---

Dear Mr. Matthew Schwartz,

Thank you for the opportunity to provide cementing services on this well. BJ Services strives to achieve complete customer satisfaction. If you have any questions regarding the services or data provided, please contact BJ Services at any time.

Sincerely,  
Jason Creel  
Field Engineer I | (307) 256-0306 | [jason.creel@bjservices.com](mailto:jason.creel@bjservices.com)

Field Office 1716 East Allison Rd., Cheyenne WY, 82007  
Phone: (307) 638-5585

Sales Office 999 18th St. Suite 1200 Denver, CO 80202  
Phone: (281) 408-2361

---

# Cementing Treatment



<b>Start Date</b>	7/25/18	<b>Well</b>	RSU ANSCHUTZ FED 4-62-02-4841CN
<b>End Date</b>	7/25/18	<b>API#</b>	05-123-46849
<b>Client</b>	HighPoint Operating Corporation	<b>County</b>	WELD
<b>Service Sup.</b>	C. Johnson	<b>State/Province</b>	CO
<b>District</b>	Cheyenne, WY	<b>Rig</b>	Savanna 803
<b>Type of Job</b>	Long String	<b>Execution ID</b>	EXC-08964-S8S9Q402

## WELL GEOMETRY

Type	ID (in)	OD (in)	Wt. (lb/ft)	MD (ft)	TVD (ft)	Excess(%)	Grade	Thread
Previous Casing	6.37	7.00	23.00	6,758.00	6,051.00			
Open Hole	6.13			17,088.00	6,051.00	10.00		
Casing	3.92	4.50	13.50	6,095.00	6,051.00			BTC
Casing	4.00	4.50	11.60	17,038.00	6,051.00		P-110	LTC

**Shoe Length (ft):** 45

## HARDWARE

<b>Top Plug Used?</b>	Yes	<b>Centralizers Quantity</b>	217
<b>Top Plug Provided By</b>	Weatherford	<b>Centralizers Type</b>	Bow
<b>Top Plug Size</b>	4.5	<b>Landing Collar Depth (ft)</b>	17,009
<b>Centralizers Used</b>	Yes		

## CIRCULATION PRIOR TO JOB

<b>Well Circulated By</b>	Rig	<b>Mud Density In (ppg)</b>	9.1
<b>Circulation Prior to Job</b>	Yes	<b>Mud Density Out (ppg)</b>	9.1
<b>Circulation Time (min)</b>	90	<b>Solids Present at End of Circulation</b>	No
<b>Circulation Rate (bpm)</b>	6	<b>Flare Prior to/during the Cement Job</b>	No
<b>Circulation Volume (bbls)</b>	540	<b>Gas Present</b>	No
<b>Lost Circulation Prior to Cement Job</b>	No		

## TEMPERATURE

<b>Ambient Temperature (°F)</b>	80	<b>Mix Water Temperature (°F)</b>	70
---------------------------------	----	-----------------------------------	----

# Cementing Treatment



## BJ FLUID DETAILS

Fluid Type	Fluid Name	Density (ppg)	Yield (Cu Ft/sk)	H2O Req. (gals/sk)	Planned Top of Fluid (Ft)	Length (Ft)	Vol (sk)	Vol (Cu Ft)	Vol (bbls)
Spacer / Pre Flush / Flush	IntegraGuard EZ Spacer	11.0000			3,985.00				20.0000
Tail Slurry	BJCem L50.6.01C	13.5000	1.5929	7.95	5,000.00	12,051.00	795	1,265.0000	225.2000
Displacement 1	Retarded Water	8.3300			15,722.00			0.0000	20.0000
Displacement Final	Water + Biocide	8.3300			0.00			0.0000	241.2000

Fluid Type	Fluid Name	Component	Concentration	UOM
Spacer / Pre Flush / Flush	IntegraGuard EZ Spacer	SAND, S-8, Silica Flour, 200 Mesh	179.4000	PPB
Spacer / Pre Flush / Flush	IntegraGuard EZ Spacer	GELLANT WATER, GW-86	0.8000	PPB
Tail Slurry	BJCem L50.6.01C	Flyash (Rockies)	50.0000	PCT
Tail Slurry	BJCem L50.6.01C	FLUID LOSS, FL-24	0.4000	BWOB
Tail Slurry	BJCem L50.6.01C	GELLANT WATER, GW-86	0.1000	BWOB
Tail Slurry	BJCem L50.6.01C	BONDING AGENT, BA-90	3.0000	LBS/SK
Tail Slurry	BJCem L50.6.01C	CEMENT, CLASS G	50.0000	PCT
Tail Slurry	BJCem L50.6.01C	EXTENDER, BENTONITE	4.0000	BWOB
Tail Slurry	BJCem L50.6.01C	FOAM PREVENTER, FP-25	0.3000	BWOB
Tail Slurry	BJCem L50.6.01C	BONDING AGENT, EC-2	3.0000	BWOB
Tail Slurry	BJCem L50.6.01C	RETARDER, SR-20	0.2000	BWOB
Displacement 1	Retarded Water	RETARDER, R-8L	0.5000	GPB
Displacement Final	Water + Biocide	BIOCIDE, BIOC11139W	0.0100	GPB

## TREATMENT SUMMARY

Fluid	Rate (bpm)	Fluid Vol. (bbls)
IntegraGuard EZ Spacer	5.00	20.00
BJCem L50.6.01C	6.00	225.20
Retarded Water	6.00	20.00
Water + Biocide	8.00	241.20

# Cementing Treatment



## DISPLACEMENT AND END OF JOB SUMMARY

---

Displaced By	BJ	Cement returns During Job	No
Calculated Displacement Volume (bbls)	260	Method Used to Verify Returns	Visual
Actual Displacement Volume (bbls)	260	Amount Bled Back After Job	0.5
Did Float Hold?	Yes	Total Volume Pumped (bbls)	506.4
Bump Plug	Yes	Top Out Cement Spotted	No
Bump Plug Pressure (psi)	1200	Lost Circulation During Cement Job	No
Were Returns Planned at Surface	No		

# EVENT LOG



**Customer Name:** HighPoint Operating Corporation

**Well Name:** RSU ANSCHUTZ FED 4-62-02-4841CN

**Job Type:** Long String

**Quote ID:** QUO-15551-Y3M1K5

**Plan ID:** ORD-08964-S8S9Q4

**Execution ID:** EXC-08964-S8S9Q402

**District:** Cheyenne, WY

**BJ Supervisor:** Chad Johnson

Seq.	Start Dt./Time	Event	Density (ppg)	Pump Rate (bpm)	Pump Vol (bbls)	Pipe Pressure (psi)	Comments
1	07/25/2018 03:00	Callout					Crew called out requested on location 0900
2	07/25/2018 08:30	Arrive on Location					Crew arrived on location
3	07/25/2018 08:30	Safety Meeting					Safety meeting
4	07/25/2018 09:30	Spot Units					Spotted all units
5	07/25/2018 09:45	Rig Up					Rigged up all equipment
6	07/25/2018 10:20	Customer					Waiting on rig to finish running casing and circulate the well. Rig on bottom at 1300, Start circulating at 1400
7	07/25/2018 15:00	Safety Meeting					Safety meeting
8	07/25/2018 15:31	Prime Up	8.3400	2.00	5.00	200.00	Fill lines with 5 bbls fresh water
9	07/25/2018 15:41	Pressure Test					Pressure test lines to 5000
10	07/25/2018 16:01	Pump Spacer	11.0000	4.00	20.00	300.00	Pump 20 bbls spacer 11 ppg
11	07/25/2018 16:05	Pump Tail Cement	13.5000	6.00	225.00	750.00	Pump 225 bbls cement at 13.5 ppg, (795 sks, 1.59 Y, 7.95 gal/sk)
12	07/25/2018 16:44	Other (See comment)					Shutdown
13	07/25/2018 16:47	Clean Pumps and Lines					Clean pumps and lines to pit
14	07/25/2018 16:57	Drop Top Plug					Drop top plug
15	07/25/2018 16:58	Pump Displacement	8.3400	8.00	240.00	2,000.00	Pump 260 bbls water displacement, (20 bbls W/ R-8L, 240 W/biocide)
16	07/25/2018 17:28	Other (See comment)	8.3400	3.00	20.00	1,200.00	Slow pump rate to 3 bmp at 240 bbls away
17	07/25/2018 17:35	Land Plug					Land plug at 1200 psi, took to 1700 psi, held for 4 mins

## EVENT LOG

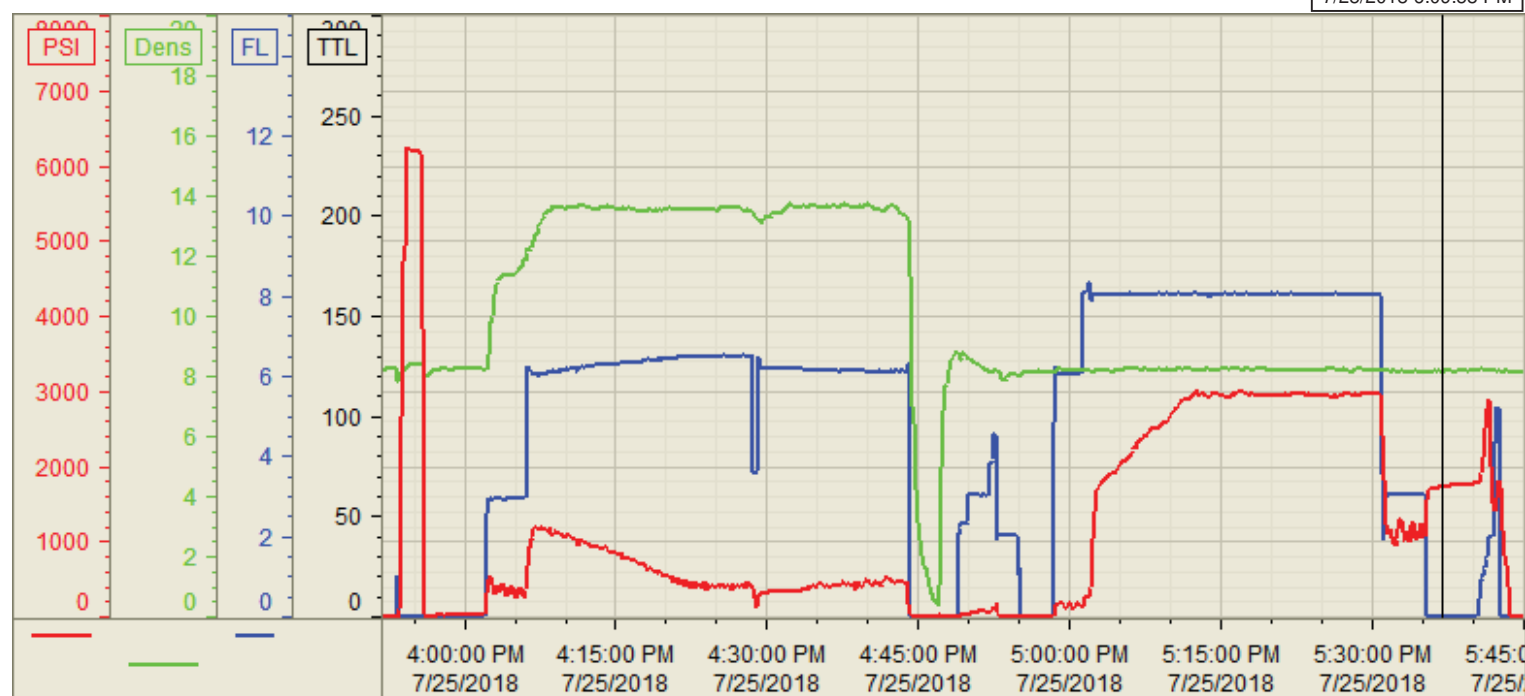


18	07/25/2018 17:39	Pump Displacement					Pressure up to 3000 psi to rupture wet shoe sub, pump 5 bbls water
19	07/25/2018 17:43	Check Floats					Check floats, floats holding, 0.5 bbls back
20	07/25/2018 18:00	Safety Meeting					Safety meeting
21	07/25/2018 18:15	Rig Down					Rigged down all equipment
22	07/25/2018 19:15	Leave Location					Crew departed location

Customer: HIGH POINT  
Well Number: 4-62-02-4841CN  
Lease Info: RSU ANSCHUTZ FED



Print Date/Time  
7/25/2018 6:09:58 PM



	Name	Y value	X value/time stamp	Tag name Y
1	DS - Press (PSI)	1736.3 i.	7/25/2018 5:36:59 PM i.	Cementer\DS_DISCHARGE_PRESS_DIAL
2	DH Density (PPG)	8.16	7/25/2018 5:36:58 PM	Cementer\DENSITY2_ACTUAL_RATE
3	Combined pump rate	0.00	7/25/2018 5:36:58 PM	Cementer\Flow_Combined
4				
5				

Source: Control1 6:09:59 PM