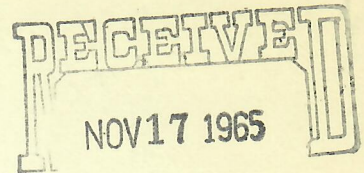


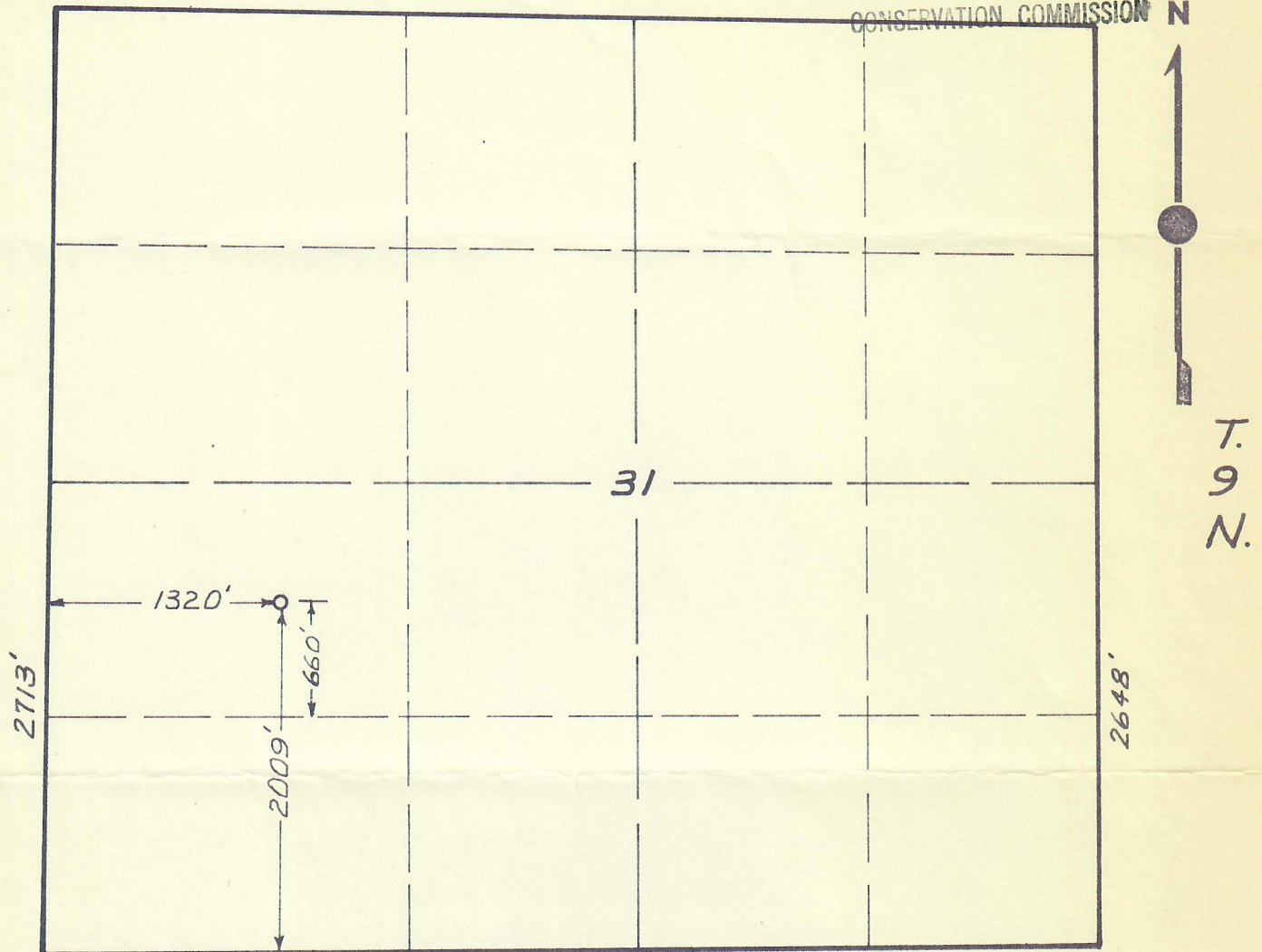


00238858

R.53 W.



NOV 17 1965

OIL & GAS
CONSERVATION COMMISSION

Scale: 1"=1000'

This is to certify that this is a true and correct survey and plat of *COMANCHE OIL CO. #1 GREEN* drilling site, located *2009'FS #1320'FW* Section *31*, Township *9 NORTH*, Range *53 West*, Sixth Principal Meridian, *LOGAN* County, *COLORADO*; being more particularly described as follows: beginning at the *SOUTHWEST* corner of said Section *31*; thence *NORTH 2009* feet; thence *EAST 1320* feet, to said drilling site.

Ground Elevation— *4170 FEET*Requested By: *FRANK WALCH*Date Staked: *NOVEMBER 12, 1965*By: *Burr Leibert*

Burr Leibert

Registered Land Surveyor

