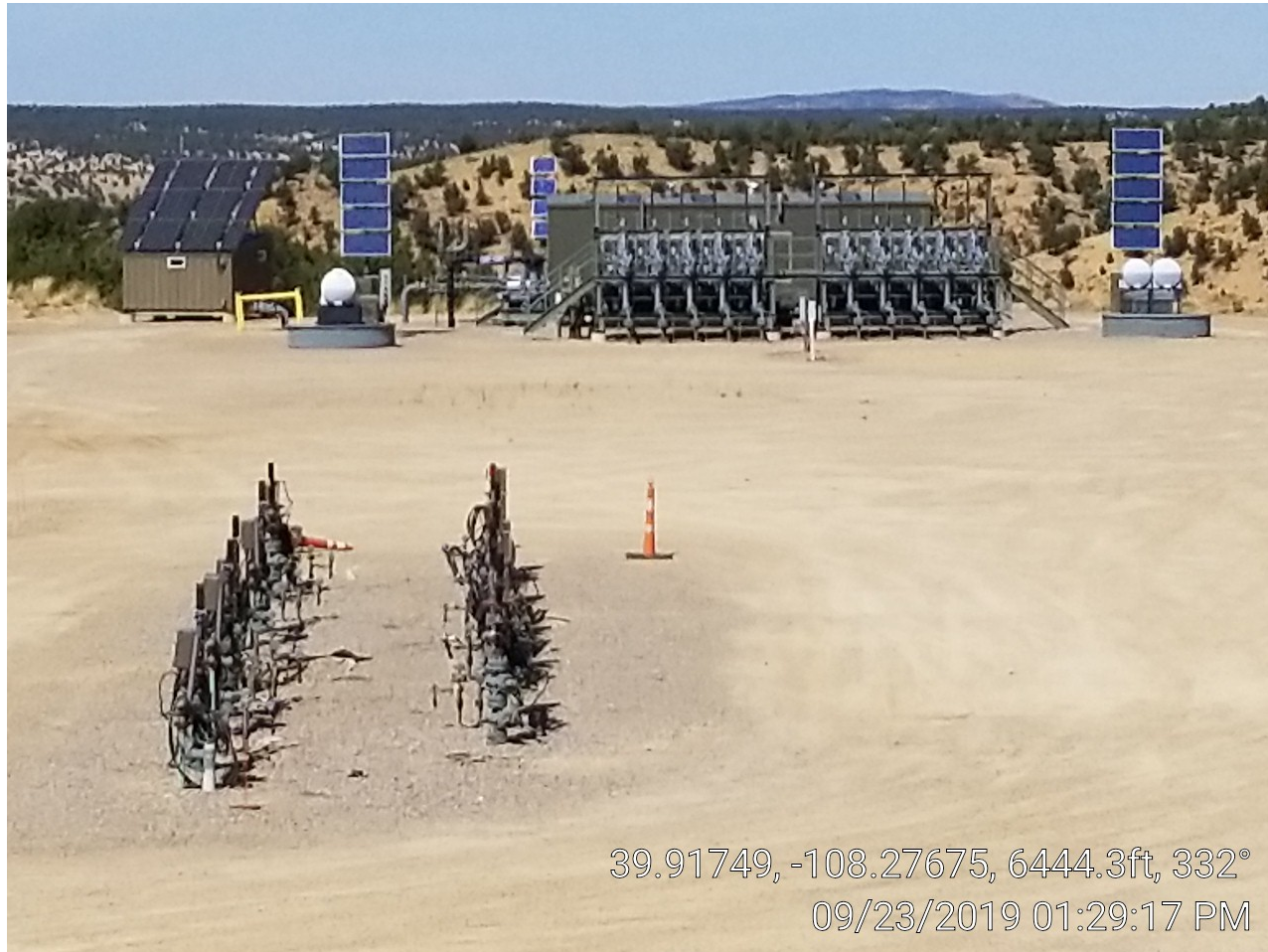


Piceance Creek Unit 197-34A  
API: 05-103-11536 to 11544 and 111637  
Inspection: 679705532



**Photo 1. Location.**

Piceance Creek Unit 197-34A  
API: 05-103-11536 to 11544 and 111637  
Inspection: 679705532



Photo 2. Wells.





Piceance Creek Unit 197-34A  
API: 05-103-11536 to 11544 and 111637  
Inspection: 679705532



39.9186, -108.27748, 6430.9ft, 17°  
09/23/2019 01:32:54 PM

**Photo 3. Chemical, headers, and separator.**