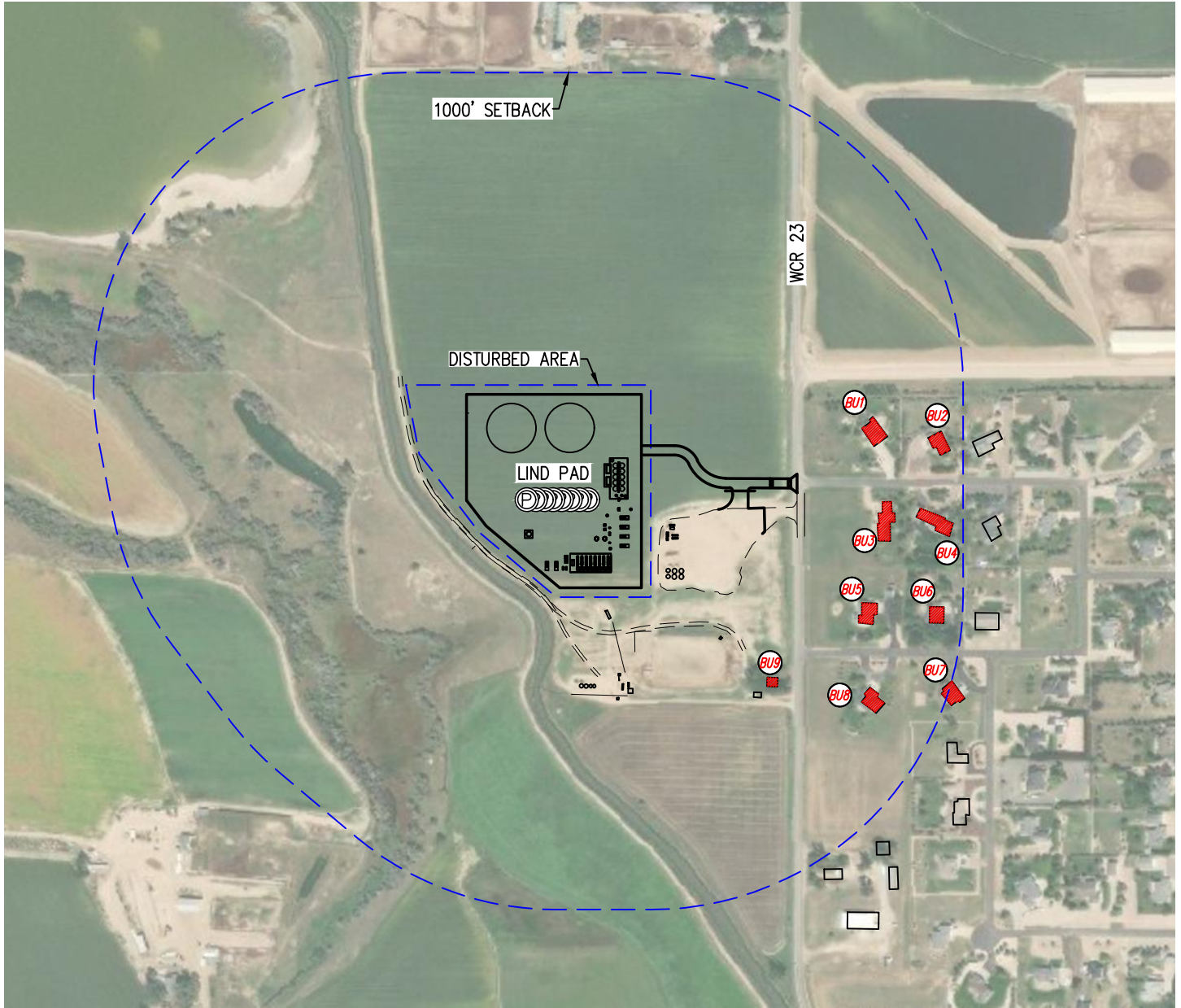
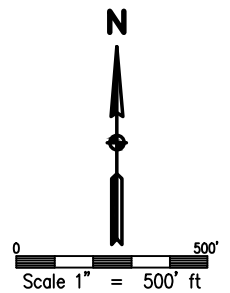


1000' SETBACK EXHIBIT
LIND 26-D PAD
 NW1/4 SEC. 26, T7N, R67W, 6TH P.M.



1000' SETBACK:

- (BU1) BUILDING UNIT: 676' W
- (BU2) BUILDING UNIT: 888' W
- (BU3) BUILDING UNIT: 725' W
- (BU4) BUILDING UNIT: 850' W
- (BU5) BUILDING UNIT: 669' W
- (BU6) BUILDING UNIT: 894' W
- (BU7) BUILDING UNIT: 979' SW
- (BU8) BUILDING UNIT: 751' SW
- (BU9) BUILDING UNIT: 453' SW



NEAREST BUILDING UNIT

FROM PROPOSED DISTURBED AREA: ±453' SW

- ☐ BUILDING
- ☒ RESIDENTIAL OR EQUIVALENT BUILDING UNIT



DRAWN BY	JMH	CHECKED BY	AAD
INITIAL SUBMITTAL	NA		
REVISED	NA		
DRAWING SIZE	8.5" X 11"		
JOB NO.	EXT07N67W23-01		
SHEET	1	OF	1

BASELINE
 Engineering - Planning - Surveying

4007 S. LINCOLN AVENUE, SUITE 405 • LOVELAND, COLORADO 80537
 P: 970.363.7600 • F: 970.363.7601 • www.baselinecorp.com