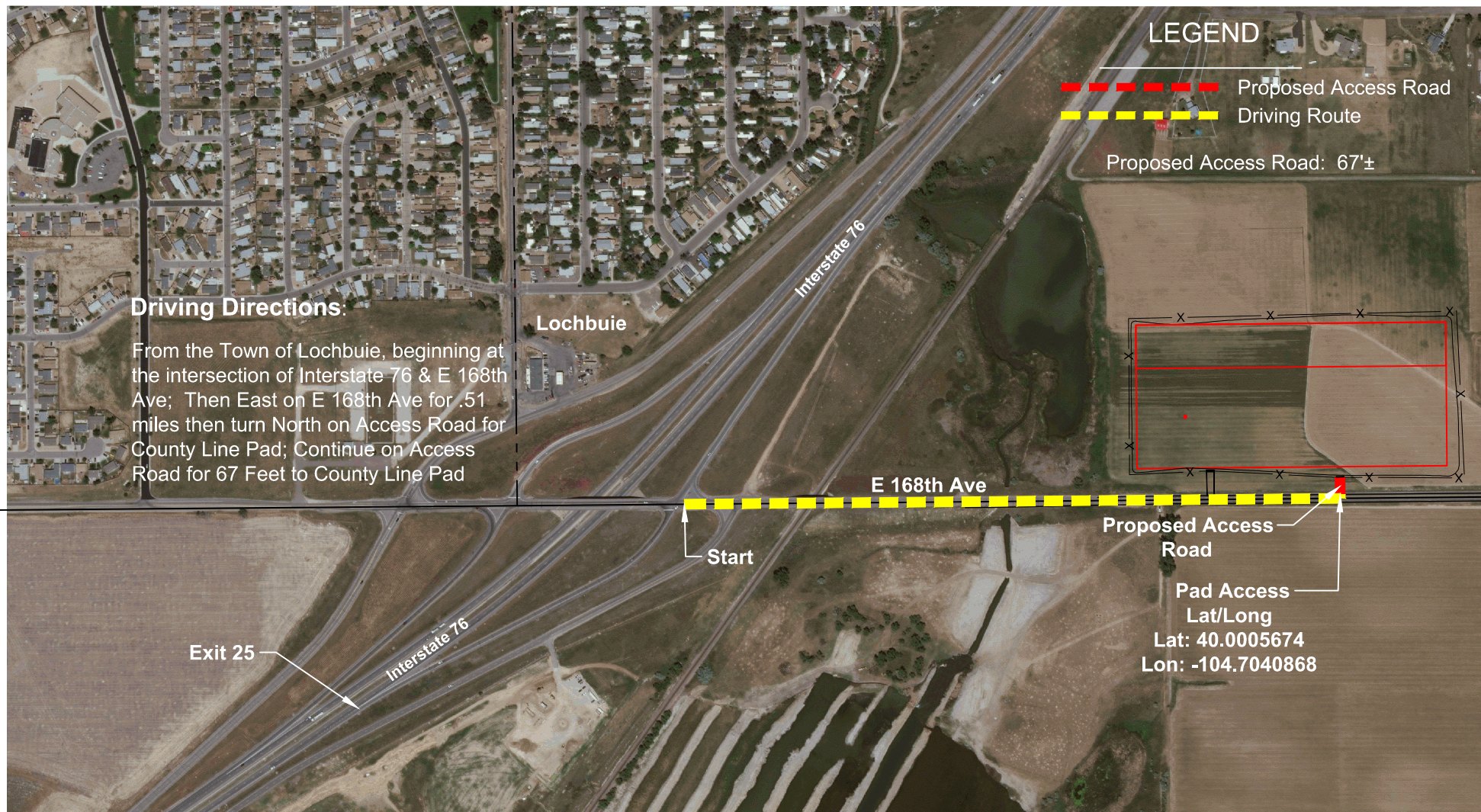


SCALE: 1" = 600'
0' 300' 600'

ACCESS ROAD MAP

SW 1/4 SE 1/4 SECTION 31
T1N R65W 6TH PM
WELD COUNTY, COLORADO



LEGEND

- Proposed Access Road
- Driving Route

Proposed Access Road: 67'±

Driving Directions:

From the Town of Lochbuie, beginning at the intersection of Interstate 76 & E 168th Ave; Then East on E 168th Ave for .51 miles then turn North on Access Road for County Line Pad; Continue on Access Road for 67 Feet to County Line Pad

Lochbuie

Interstate 76

E 168th Ave

Start

Exit 25

Interstate 76

Proposed Access Road

Pad Access Lat/Long

Lat: 40.0005674

Lon: -104.7040868

VERDAD RESOURCES
COUNTY LINE PAD
JOB NO. 116941,116940
118679

MAPP June 21, 2019
SHEET : 1 OF 1
F2A_COUNTYLINE_3107_3112_3130_ACCESS_ROAD

REVISION:
INT DATE

NOTE:
ALL PRODUCTION FACILITIES WILL BE ON PAD

TOPOGRAPHIC
LOYALTY INNOVATION LEGACY
520 Stacy Court Ste B, Lafayette, CO 80026
303.666.0379 www.topographic.com