



September 10, 2019

Ms. Kate Graves
Reclamation Representative
Kerr-McGee Oil & Gas Onshore LP
501 N Division Blvd.
Platteville, Colorado 80651

**RE: Colorado Oil & Gas Conservation Commission (COGCC)
Vegetation Assessment Report (Interim Reclamation Completion Notice)
Powers 27N-27HZ (302423)
Kerr-McGee Oil & Gas Onshore LP (Operator: 47120)**

Dear Ms. Graves:

Apex Companies, LLC (Apex) is presenting this letter to Kerr-McGee Oil & Gas Onshore LP (Kerr-McGee) documenting the results of a vegetation assessment that demonstrates successful completion of interim reclamation efforts, per COGCC Rule 1003, on the above-referenced location. Attached is a topographic location map and site map with additional location information.

Based on site visits and the completed vegetation assessment, Apex inspectors confirmed that the unused portions of the reduced production footprint have been stabilized and seeded with a mixture consistent with species composition and reseeding practices common to the area.

On July 19, 2019, modified step-point vegetation surveys were conducted on the reclaimed portion of the well pad, and on adjacent reference areas. Foliar and basal cover, along with non-vegetated and noxious weed occurrences, were documented; 100 survey points were recorded within the reclaimed disturbance and 100 survey points were recorded within the reference area. Vegetation survey points were identified using a bullseye target tool. The survey methodology employed by Apex is based on the *step-point method* described in an interagency technical reference published by the Bureau of Land Management (BLM, 1996).

Noxious weeds listed by the Colorado Department of Agriculture were excluded from the percent of reference vegetative coverage calculations, per COGCC Rule 1003.e (2). To ensure reclamation vegetative composition meets the standards of Kerr-McGee and the COGCC, undesirable cover is also quantified in the attached Summary of Field Data. Undesirable cover includes species identified by the United States Department of Agriculture Natural Resource Conservation Service as introduced and not native to the lower 48 states, and not considered beneficial for reclamation purposes.

Survey results indicate the reclaimed area has a foliar vegetative cover that is 347.3% of the reference area. Vegetation survey results are provided in the attached survey summary table and data sheets. Based on the results of the survey, interim reclamation, as defined by COGCC Rule 1003.e (2), has been achieved. Photographs required by COGCC Rule 1003.e (3) are also attached along with the site map illustrating vegetation survey efforts.

Apex appreciates the opportunity to provide environmental consulting services on this project. Should you have any questions or require additional information, please do not hesitate to contact me.

Sincerely,
Apex Companies, LLC



Adam Roll
Environmental Scientist
970-589-6111
Adam.Roll@apexc.com

Attachments:

1. Vegetation Survey - Summary of Field Data
2. Topographic Location Map
3. Vegetation Survey Site Map
4. Vegetation Assessment Photo Log
5. Vegetation Survey (Field Data Tables)

Reference:

United States (U.S.) Department of Agriculture (USDA), Forest Service (USFS), Natural Resource Conservation Service (NRCS) and U.S. Department of the Interior (USDOI) Bureau of Land Management (BLM). "Sampling Vegetation Attributes, Interagency Technical Reference, 1996 (Revised in 1997, and 1999)". USDOI BLM Technical References #1734-4.
Date Accessed: 2 August, 2017

Vegetation Survey - Summary of Field Data

Client	Kerr-McGee
COGCC Location Name (ID)	Powers 27N-27HZ (302423)
Assessment Date	7/19/2019
Inspector Name	Scott Taylor

Based on the survey methodology, the foliar cover (%) in each survey area is calculated by summing the total number of foliar occurrences, excluding noxious weeds, and dividing by the total occurrences in the transects. For this location:

Reclaim Area (Foliar Cover)	Reference Area (Foliar Cover)
$(54 + 10 + 0) / 194 = \mathbf{33.0\%}$	$(9 + 10 + 0) / 200 = \mathbf{9.5\%}$

For the purposes of this assessment, the undesirable foliar cover (%) is calculated by summing the total number of undesirable* foliar occurrences and dividing by the total occurrences in the transects, excluding noxious weeds. For this location:

Reclaim Area (Undesirable Foliar Cover)	Reference Area (Undesirable Foliar Cover)
$0 / (54 + 10 + 0) = \mathbf{0.0\%}$	$0 / (9 + 10 + 0) = \mathbf{0.0\%}$

The percent of reference used to evaluate the reclamation area for compliance with COGCC Rule 1003.e(2) is calculated by dividing the foliar cover (%) in the reclaim area by the foliar cover (%) in the reference area. For this location:

Percent of Reference (Reclaim % / Reference %)
$33.0\% / 9.5\% = \mathbf{347.3\%}$

Reclaim Area Vegetation

Desirable Foliar Cover	33.0%
Desirable Basal Cover	19.1%
Non Vegetated	18.6%
Noxious Weeds Cover	28.9%
Undesirable Cover	0.5%
Quality Assurance Total <i>(must equal 100)</i>	100.0%
Grass (Foliar)	54
Forb (Foliar)	10
Shrubs (Foliar)	0
Noxious Weed (Foliar)	30
Grass (Basal)	27
Forb (Basal)	11
Shrubs (Basal)	0
Noxious Weed (Basal)	26
Bare Ground	4
Litter	32
Rock	0
Total Occurrences	194

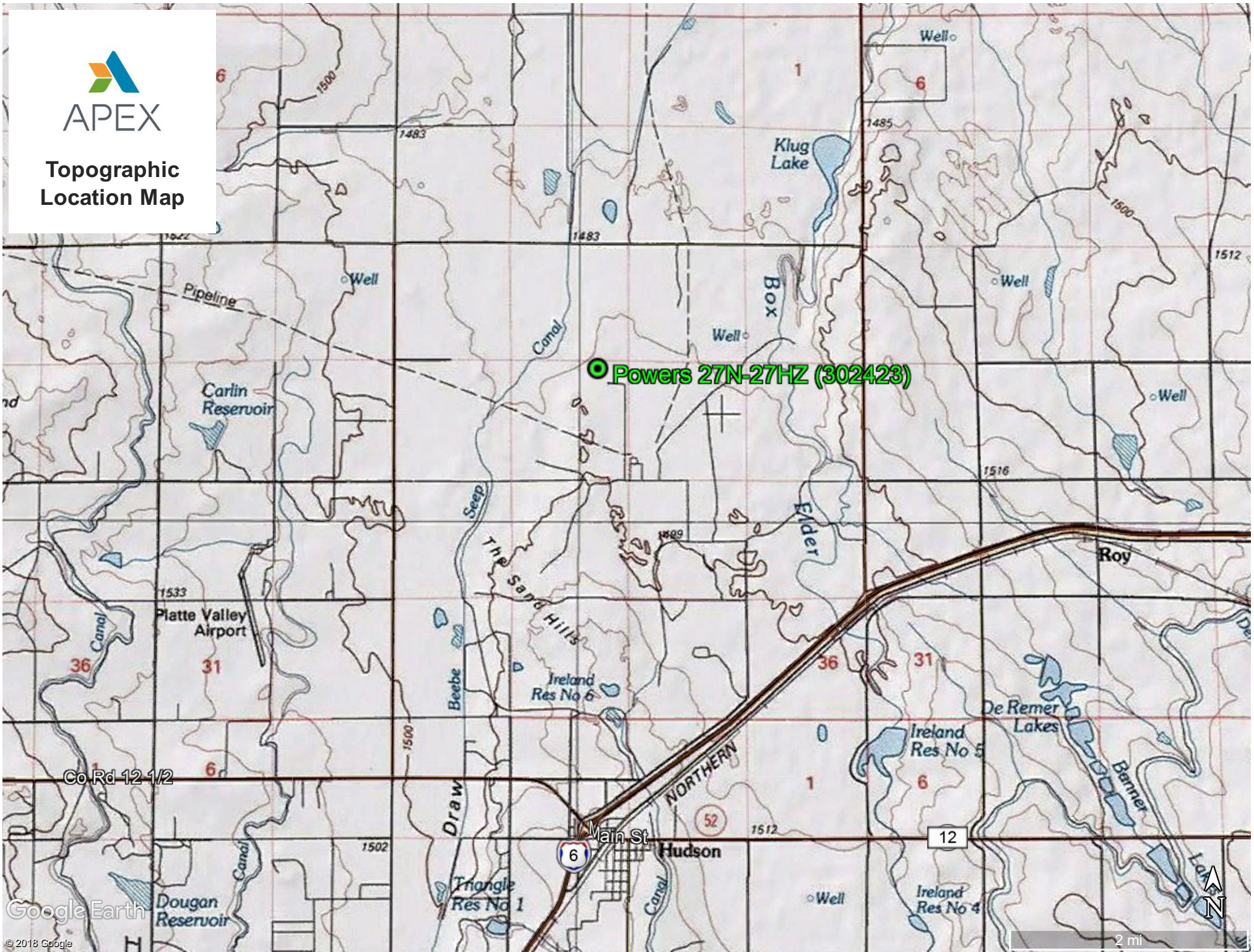
Reference Area Vegetation

Desirable Foliar Cover	9.5%
Desirable Basal Cover	1.5%
Non Vegetated	4.0%
Noxious Weeds Cover	84.5%
Undesirable Cover	0.5%
Quality Assurance Total <i>(must equal 100)</i>	100.0%
Grass (Foliar)	9
Forb (Foliar)	10
Shrubs (Foliar)	0
Noxious Weed (Foliar)	81
Grass (Basal)	1
Forb (Basal)	3
Shrubs (Basal)	0
Noxious Weed (Basal)	88
Bare Ground	0
Litter	8
Rock	0
Total Occurrences	200

* Identified as introduced and non-native to Colorado by the United States Department of Agriculture Natural Resources Conservation Service.



Topographic
Location Map





Vegetation Survey Site Map

Kerr-McGee Oil & Gas Onshore LP

**Powers 27N-27HZ
(302423)**

- Vegetation Photo Point
- Cardinal Direction Photos
- Reclaim Transect
- Reference Transect

Legal Description: NENE, Sec. 22, T2N-R65W

Lat/Long: 40.130869/-104.645467

County: Weld

Land Use: Non-Cropland

Reference Area Cover: 9.5%

Reclaim Area Cover: 33.0%

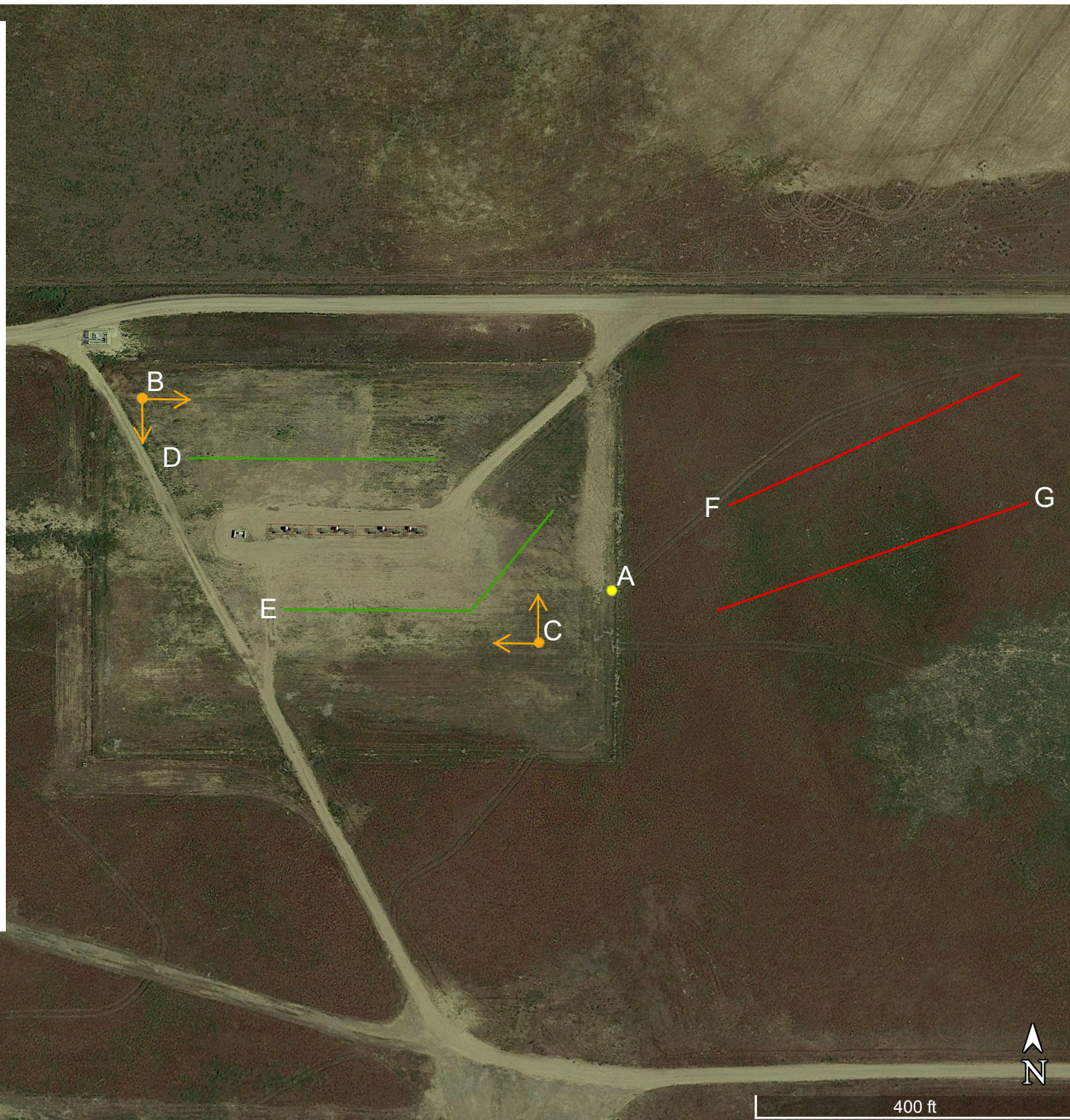
Cover Ratio (Reclaim/Reference): 347.3%

Inspector: Scott Taylor

Assessment Date: 7/19/2019

Aerial Imagery Date: 5/31/2019

**Please reference coordinate disclaimer on the photo log pages.*



Vegetation Assessment Photo Log

Client - Kerr-McGee Oil & Gas Onshore LP

Date Completed - 07/19/2019

Location Name (ID) - Powers 27N-27HZ (302423)



Photo Point A: Edge of Disturbance - Facing South

*Geographic coordinates provided in the borders of all attached photos are based on points identified by the mobile phone or tablet which collected the photo. Coordinate accuracy in this format is typically no greater than 5 meters, while the points illustrated in the site diagram associated with this submittal were collected with a high accuracy GPS unit with sub-meter accuracy. Discrepancies between the site diagram and photo coordinates will exist.

Vegetation Assessment Photo Log

Date Completed - 07/19/2019

Client - Kerr-McGee Oil & Gas Onshore LP

Location Name (ID) - Powers 27N-27HZ (302423)



Photo Point B: North of Disturbance - Facing South



Photo Point C: South of Disturbance - Facing North



Photo Point B: West of Disturbance - Facing East

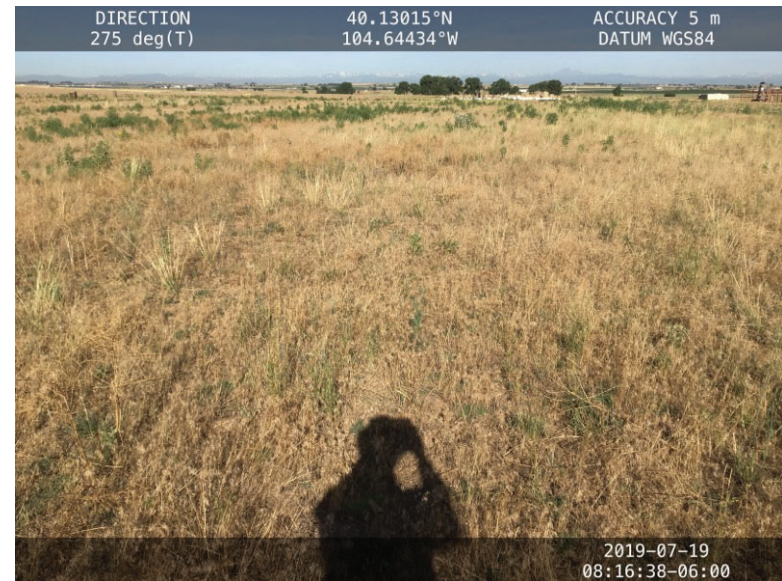


Photo Point C: East of Disturbance - Facing West

Vegetation Assessment Photo Log

Date Completed - 07/19/2019

Client - Kerr-McGee Oil & Gas Onshore LP

Location Name (ID) - Powers 27N-27HZ (302423)



Photo Point A: Reclaim Area Vegetation Photo Point - Facing West

Vegetation Assessment Photo Log

Client - Kerr-McGee Oil & Gas Onshore LP

Date Completed - 07/19/2019

Location Name (ID) - Powers 27N-27HZ (302423)



Transect Photo D: Reclaim Transect 1 - Facing East



Transect Photo E: Reclaim Transect 2 - Facing East

Vegetation Assessment Photo Log

Date Completed - 07/19/2019

Client - Kerr-McGee Oil & Gas Onshore LP

Location Name (ID) - Powers 27N-27HZ (302423)

DIRECTION
97 deg(T)

40.13033°N
104.64401°W

ACCURACY 5 m
DATUM WGS84



2019-07-19
08:07:52-06:00

Photo Point A: Reference Area Vegetation Photo Point - Facing East

Vegetation Assessment Photo Log

Client - Kerr-McGee Oil & Gas Onshore LP

Date Completed - 07/19/2019

Location Name (ID) - Powers 27N-27HZ (302423)



Transect Photo F: Reference Transect 1 - Facing Northeast



Transect Photo G: Reference Transect 2 - Facing Southwest

Vegetation Survey (Field Data Table)

Client: Kerr-McGee
 COGCC Location Name (ID): Powers 27N-27HZ (302423)
 Transect ID: Reclaim Transect 1
 Transect Length: 310 ft.
 Assessment Date: 7/19/2019
 Inspector: Scott Taylor

Point	Foliar	Species	Basal	Species
1	Grass	<i>Pascopyrum smithii Agropyron</i>	Noxious Weed C	<i>Bromus tectorum</i>
2	Grass	<i>Pascopyrum smithii Agropyron</i>	Grass	<i>Bouteloua gracilis</i>
3	Noxious Weed C	<i>Bromus tectorum</i>	Non Vegetative	Litter
4	Grass	<i>Thinopyrum intermedia</i>	Noxious Weed C	<i>Bromus tectorum</i>
5	Noxious Weed C	<i>Bromus tectorum</i>	Non Vegetative	Litter
6	Noxious Weed C	<i>Bromus tectorum</i>	Grass	<i>Pascopyrum smithii Agropyron</i>
7	Noxious Weed C	<i>Bromus tectorum</i>	Grass	<i>Pascopyrum smithii Agropyron</i>
8	Noxious Weed C	<i>Bromus tectorum</i>	Non Vegetative	Bare Ground
9	Noxious Weed C	<i>Bromus tectorum</i>	Non Vegetative	Litter
10	Grass	<i>Schizachyrium scoparium</i>	Grass	<i>Schizachyrium scoparium</i>
11	Noxious Weed C	<i>Bromus tectorum</i>	Non Vegetative	Litter
12	Noxious Weed C	<i>Bromus tectorum</i>	Forb	<i>Conyza canadensis</i>
13			Non Vegetative	Litter
14	Grass	<i>Pascopyrum smithii Agropyron</i>	Grass	<i>Pascopyrum smithii Agropyron</i>
15	Grass	<i>Schizachyrium scoparium</i>	Forb	<i>Conyza canadensis</i>
16	Grass	<i>Schizachyrium scoparium</i>	Non Vegetative	Litter
17	Grass	<i>Bouteloua gracilis</i>	Noxious Weed C	<i>Bromus tectorum</i>
18	Grass	<i>Thinopyrum intermedia</i>	Non Vegetative	Litter
19	Forb	<i>Ambrosia psilostachya</i>	Non Vegetative	Litter
20	Noxious Weed C	<i>Bromus tectorum</i>	Grass	<i>Thinopyrum intermedia</i>
21	Noxious Weed C	<i>Bromus tectorum</i>	Non Vegetative	Bare Ground
22	Grass	<i>Bouteloua curtipendula</i>	Non Vegetative	Litter
23	Grass	<i>Schizachyrium scoparium</i>	Noxious Weed C	<i>Bromus tectorum</i>
24	Grass	<i>Thinopyrum intermedia</i>	Non Vegetative	Litter
25	Grass	<i>Bouteloua gracilis</i>	Non Vegetative	Bare Ground
26	Noxious Weed C	<i>Bromus tectorum</i>	Noxious Weed C	<i>Bromus tectorum</i>
27	Grass	<i>Bouteloua gracilis</i>	Grass	<i>Pascopyrum smithii Agropyron</i>
28	Grass	<i>Thinopyrum intermedia</i>	Forb	<i>Conyza canadensis</i>
29			Non Vegetative	Litter
30			Non Vegetative	Litter
31	Grass	<i>Bouteloua gracilis</i>	Grass	<i>Bouteloua gracilis</i>
32	Grass	<i>Pascopyrum smithii Agropyron</i>	Forb	<i>Croton texensis</i>
33	Grass	<i>Pascopyrum smithii Agropyron</i>	Noxious Weed C	<i>Bromus tectorum</i>
34	Grass	<i>Hesperostipa comata</i>	Grass	<i>Hesperostipa comata</i>
35	Grass	<i>Thinopyrum intermedia</i>	Grass	<i>Thinopyrum intermedia</i>
36	Grass	<i>Pascopyrum smithii Agropyron</i>	Non Vegetative	Litter
37	Grass	<i>Schizachyrium scoparium</i>	Non Vegetative	Litter
38	Grass	<i>Pascopyrum smithii Agropyron</i>	Non Vegetative	Litter
39	Grass	<i>Schizachyrium scoparium</i>	Non Vegetative	Litter
40	Grass	<i>Pascopyrum smithii Agropyron</i>	Non Vegetative	Litter
41	Grass	<i>Schizachyrium scoparium</i>	Grass	<i>Schizachyrium scoparium</i>
42	Grass	<i>Bromus inermis</i>	Forb	<i>Cleome serrulata</i>
43	Grass	<i>Thinopyrum intermedia</i>	Grass	<i>Thinopyrum intermedia</i>
44	Forb	<i>Argemone polyanthemos</i>	Non Vegetative	Litter
45	Grass	<i>Pascopyrum smithii Agropyron</i>	Noxious Weed C	<i>Bromus tectorum</i>
46	Grass	<i>Bromus inermis</i>	Grass	<i>Bromus inermis</i>
47	Forb	<i>Cleome serrulata</i>	Noxious Weed C	<i>Bromus tectorum</i>
48	Forb	<i>Cleome serrulata</i>	Forb	<i>Cleome serrulata</i>
49	Grass	<i>Achnatherum hymenoides</i>	Grass	<i>Achnatherum hymenoides</i>
50	Grass	<i>Pascopyrum smithii Agropyron</i>	Grass	<i>Pascopyrum smithii Agropyron</i>

Vegetation Survey (Field Data Table)

Client: Kerr-McGee
 COGCC Location Name (ID): Powers 27N-27HZ (302423)
 Transect ID: Reclaim Transect 2
 Transect Length: 397 ft.
 Assessment Date: 7/19/2019
 Inspector: Scott Taylor

Point	Foliar	Species	Basal	Species
1	Noxious Weed C	<i>Bromus tectorum</i>	Non Vegetative	Litter
2	Noxious Weed C	<i>Bromus tectorum</i>	Forb	<i>Salsola L</i>
3			Non Vegetative	Litter
4	Grass	<i>Achnatherum hymenoides</i>	Noxious Weed C	<i>Bromus tectorum</i>
5	Noxious Weed C	<i>Bromus tectorum</i>	Forb	<i>Croton texensis</i>
6	Noxious Weed C	<i>Bromus tectorum</i>	Non Vegetative	Litter
7	Forb	<i>Helianthus petiolaris</i>	Non Vegetative	Litter
8			Non Vegetative	Litter
9	Noxious Weed C	<i>Bromus tectorum</i>	Non Vegetative	Litter
10	Noxious Weed C	<i>Bromus tectorum</i>	Grass	<i>Thinopyrum intermedia</i>
11	Noxious Weed C	<i>Bromus tectorum</i>	Noxious Weed C	<i>Bromus tectorum</i>
12	Grass	<i>Pascopyrum smithii Agropyron</i>	Forb	<i>Helianthus petiolaris</i>
13	Forb	<i>Helianthus petiolaris</i>	Noxious Weed C	<i>Bromus tectorum</i>
14	Forb	<i>Cleome serrulata</i>	Noxious Weed C	<i>Bromus tectorum</i>
15	Grass	<i>Hesperostipa comata</i>	Grass	<i>Hesperostipa comata</i>
16	Grass	<i>Pascopyrum smithii Agropyron</i>	Noxious Weed C	<i>Bromus tectorum</i>
17	Grass	<i>Pascopyrum smithii Agropyron</i>	Noxious Weed C	<i>Bromus tectorum</i>
18	Grass	<i>Schizachyrium scoparium</i>	Noxious Weed C	<i>Bromus tectorum</i>
19	Grass	<i>Hesperostipa comata</i>	Grass	<i>Pascopyrum smithii Agropyron</i>
20	Noxious Weed C	<i>Bromus tectorum</i>	Non Vegetative	Litter
21	Grass	<i>Pascopyrum smithii Agropyron</i>	Noxious Weed C	<i>Bromus tectorum</i>
22	Grass	<i>Hesperostipa comata</i>	Forb	<i>Cleome serrulata</i>
23	Grass	<i>Schizachyrium scoparium</i>	Grass	<i>Schizachyrium scoparium</i>
24	Grass	<i>Hesperostipa comata</i>	Noxious Weed C	<i>Bromus tectorum</i>
25	Noxious Weed C	<i>Bromus tectorum</i>	Noxious Weed C	<i>Bromus tectorum</i>
26	Noxious Weed C	<i>Bromus tectorum</i>	Noxious Weed C	<i>Bromus tectorum</i>
27	Grass	<i>Schizachyrium scoparium</i>	Noxious Weed C	<i>Bromus tectorum</i>
28	Grass	<i>Pascopyrum smithii Agropyron</i>	Forb	<i>Helianthus petiolaris</i>
29	Grass	<i>Hesperostipa comata</i>	Noxious Weed C	<i>Bromus tectorum</i>
30	Noxious Weed C	<i>Bromus tectorum</i>	Grass	<i>Hesperostipa comata</i>
31	Noxious Weed C	<i>Bromus tectorum</i>	Grass	<i>Bouteloua gracilis</i>
32	Grass	<i>Calamovilfa longifolia</i>	Grass	<i>Calamovilfa longifolia</i>
33	Grass	<i>Pascopyrum smithii Agropyron</i>	Grass	<i>Pascopyrum smithii Agropyron</i>
34	Grass	<i>Pascopyrum smithii Agropyron</i>	Noxious Weed C	<i>Bromus tectorum</i>
35	Forb	<i>Cleome serrulata</i>	Non Vegetative	Litter
36	Grass	<i>Thinopyrum intermedia</i>	Noxious Weed C	<i>Cichorium intybus</i>
37	Noxious Weed C	<i>Bromus tectorum</i>	Grass	<i>Bouteloua gracilis</i>
38	Noxious Weed C	<i>Bromus tectorum</i>	Non Vegetative	Litter
39	Noxious Weed C	<i>Bromus tectorum</i>	Non Vegetative	Litter
40	Grass	<i>Pascopyrum smithii Agropyron</i>	Grass	<i>Pascopyrum smithii Agropyron</i>
41	Noxious Weed C	<i>Bromus tectorum</i>	Non Vegetative	Litter
42	Grass	<i>Thinopyrum intermedia</i>	Grass	<i>Thinopyrum intermedia</i>
43	Grass	<i>Thinopyrum intermedia</i>	Non Vegetative	Litter
44	Noxious Weed C	<i>Bromus tectorum</i>	Non Vegetative	Litter
45			Non Vegetative	Bare Ground
46	Forb	<i>Argemone polyanthemom</i>	Noxious Weed C	<i>Bromus tectorum</i>
47	Noxious Weed C	<i>Bromus tectorum</i>	Noxious Weed C	<i>Bromus tectorum</i>
48	Noxious Weed C	<i>Bromus tectorum</i>	Noxious Weed C	<i>Bromus tectorum</i>
49	Grass	<i>Elymus L</i>	Grass	<i>Elymus L</i>
50	Forb	<i>Cleome serrulata</i>	Non Vegetative	Litter

Vegetation Survey (Field Data Table)

Client: Kerr-McGee
 COGCC Location Name (ID): Powers 27N-27HZ (302423)
 Transect ID: Reference Transect 1
 Transect Length: 402 ft.
 Assessment Date: 7/19/2019
 Inspector: Scott Taylor

Point	Foliar	Species	Basal	Species
1	Noxious Weed C	<i>Bromus tectorum</i>	Noxious Weed C	<i>Bromus tectorum</i>
2	Grass	<i>Calamovilfa longifolia</i>	Noxious Weed C	<i>Bromus tectorum</i>
3	Noxious Weed C	<i>Bromus tectorum</i>	Noxious Weed C	<i>Cichorium intybus</i>
4	Noxious Weed C	<i>Bromus tectorum</i>	Non Vegetative	Litter
5	Noxious Weed C	<i>Bromus tectorum</i>	Noxious Weed C	<i>Bromus tectorum</i>
6	Noxious Weed C	<i>Bromus tectorum</i>	Noxious Weed C	<i>Bromus tectorum</i>
7	Noxious Weed C	<i>Bromus tectorum</i>	Non Vegetative	Litter
8	Noxious Weed C	<i>Bromus tectorum</i>	Noxious Weed C	<i>Bromus tectorum</i>
9	Forb	<i>Argemone polyanthemos</i>	Noxious Weed C	<i>Bromus tectorum</i>
10	Noxious Weed C	<i>Bromus tectorum</i>	Noxious Weed C	<i>Bromus tectorum</i>
11	Noxious Weed C	<i>Bromus tectorum</i>	Noxious Weed C	<i>Bromus tectorum</i>
12	Noxious Weed C	<i>Bromus tectorum</i>	Noxious Weed C	<i>Bromus tectorum</i>
13	Noxious Weed C	<i>Bromus tectorum</i>	Noxious Weed C	<i>Bromus tectorum</i>
14	Noxious Weed C	<i>Bromus tectorum</i>	Noxious Weed C	<i>Bromus tectorum</i>
15	Noxious Weed C	<i>Bromus tectorum</i>	Noxious Weed C	<i>Bromus tectorum</i>
16	Noxious Weed C	<i>Bromus tectorum</i>	Noxious Weed C	<i>Bromus tectorum</i>
17	Noxious Weed C	<i>Bromus tectorum</i>	Noxious Weed C	<i>Bromus tectorum</i>
18	Noxious Weed C	<i>Bromus tectorum</i>	Noxious Weed C	<i>Bromus tectorum</i>
19	Forb	<i>Helianthus petiolaris</i>	Noxious Weed C	<i>Bromus tectorum</i>
20	Noxious Weed C	<i>Bromus tectorum</i>	Noxious Weed C	<i>Bromus tectorum</i>
21	Noxious Weed C	<i>Bromus tectorum</i>	Noxious Weed C	<i>Bromus tectorum</i>
22	Forb	<i>Helianthus petiolaris</i>	Noxious Weed C	<i>Bromus tectorum</i>
23	Noxious Weed C	<i>Bromus tectorum</i>	Noxious Weed C	<i>Bromus tectorum</i>
24	Noxious Weed C	<i>Bromus tectorum</i>	Non Vegetative	Litter
25	Noxious Weed C	<i>Bromus tectorum</i>	Non Vegetative	Litter
26	Noxious Weed C	<i>Bromus tectorum</i>	Noxious Weed C	<i>Bromus tectorum</i>
27	Noxious Weed C	<i>Bromus tectorum</i>	Forb	<i>Helianthus petiolaris</i>
28	Noxious Weed C	<i>Bromus tectorum</i>	Noxious Weed C	<i>Bromus tectorum</i>
29	Noxious Weed C	<i>Bromus tectorum</i>	Non Vegetative	Litter
30	Forb	<i>Lygodesmia juncea</i>	Noxious Weed C	<i>Bromus tectorum</i>
31	Noxious Weed C	<i>Bromus tectorum</i>	Noxious Weed C	<i>Bromus tectorum</i>
32	Noxious Weed C	<i>Bromus tectorum</i>	Noxious Weed C	<i>Bromus tectorum</i>
33	Noxious Weed C	<i>Bromus tectorum</i>	Noxious Weed C	<i>Bromus tectorum</i>
34	Noxious Weed C	<i>Bromus tectorum</i>	Noxious Weed C	<i>Bromus tectorum</i>
35	Noxious Weed C	<i>Bromus tectorum</i>	Noxious Weed C	<i>Bromus tectorum</i>
36	Noxious Weed C	<i>Bromus tectorum</i>	Noxious Weed C	<i>Bromus tectorum</i>
37	Noxious Weed C	<i>Bromus tectorum</i>	Noxious Weed C	<i>Bromus tectorum</i>
38	Noxious Weed C	<i>Bromus tectorum</i>	Noxious Weed C	<i>Bromus tectorum</i>
39	Forb	<i>Yucca spp.</i>	Noxious Weed C	<i>Bromus tectorum</i>
40	Noxious Weed C	<i>Bromus tectorum</i>	Forb	<i>Croton texensis</i>
41	Forb	<i>Argemone polyanthemos</i>	Noxious Weed C	<i>Bromus tectorum</i>
42	Noxious Weed C	<i>Bromus tectorum</i>	Noxious Weed C	<i>Bromus tectorum</i>
43	Forb	<i>Helianthus petiolaris</i>	Noxious Weed C	<i>Bromus tectorum</i>
44	Noxious Weed C	<i>Bromus tectorum</i>	Noxious Weed C	<i>Bromus tectorum</i>
45	Forb	<i>Helianthus petiolaris</i>	Noxious Weed C	<i>Bromus tectorum</i>
46	Noxious Weed C	<i>Bromus tectorum</i>	Noxious Weed C	<i>Bromus tectorum</i>
47	Noxious Weed C	<i>Bromus tectorum</i>	Noxious Weed C	<i>Bromus tectorum</i>
48	Noxious Weed C	<i>Bromus tectorum</i>	Noxious Weed C	<i>Bromus tectorum</i>
49	Forb	<i>Helianthus petiolaris</i>	Noxious Weed C	<i>Bromus tectorum</i>
50	Noxious Weed C	<i>Bromus tectorum</i>	Noxious Weed C	<i>Bromus tectorum</i>

Vegetation Survey (Field Data Table)

Client: Kerr-McGee
 COGCC Location Name (ID): Powers 27N-27HZ (302423)
 Transect ID: Reference Transect 2
 Transect Length: 414 ft.
 Assessment Date: 7/19/2019
 Inspector: Scott Taylor

Point	Foliar	Species	Basal	Species
1	Noxious Weed C	<i>Bromus tectorum</i>	Non Vegetative	Litter
2	Noxious Weed C	<i>Bromus tectorum</i>	Noxious Weed C	<i>Bromus tectorum</i>
3	Noxious Weed C	<i>Bromus tectorum</i>	Noxious Weed C	<i>Bromus tectorum</i>
4	Grass	<i>Hesperostipa comata</i>	Noxious Weed C	<i>Bromus tectorum</i>
5	Noxious Weed C	<i>Bromus tectorum</i>	Non Vegetative	Litter
6	Noxious Weed C	<i>Bromus tectorum</i>	Noxious Weed C	<i>Bromus tectorum</i>
7	Noxious Weed C	<i>Bromus tectorum</i>	Noxious Weed C	<i>Bromus tectorum</i>
8	Noxious Weed C	<i>Bromus tectorum</i>	Noxious Weed C	<i>Bromus tectorum</i>
9	Noxious Weed C	<i>Bromus tectorum</i>	Noxious Weed C	<i>Bromus tectorum</i>
10	Noxious Weed C	<i>Bromus tectorum</i>	Noxious Weed C	<i>Bromus tectorum</i>
11	Grass	<i>Hesperostipa comata</i>	Grass	<i>Hesperostipa comata</i>
12	Grass	<i>Hesperostipa comata</i>	Noxious Weed C	<i>Bromus tectorum</i>
13	Noxious Weed C	<i>Bromus tectorum</i>	Noxious Weed C	<i>Bromus tectorum</i>
14	Noxious Weed C	<i>Bromus tectorum</i>	Noxious Weed C	<i>Bromus tectorum</i>
15	Noxious Weed C	<i>Bromus tectorum</i>	Noxious Weed C	<i>Bromus tectorum</i>
16	Noxious Weed C	<i>Bromus tectorum</i>	Noxious Weed C	<i>Bromus tectorum</i>
17	Forb	<i>Yucca spp.</i>	Noxious Weed C	<i>Bromus tectorum</i>
18	Noxious Weed C	<i>Bromus tectorum</i>	Noxious Weed C	<i>Bromus tectorum</i>
19	Noxious Weed C	<i>Bromus tectorum</i>	Non Vegetative	Litter
20	Noxious Weed C	<i>Bromus tectorum</i>	Noxious Weed C	<i>Bromus tectorum</i>
21	Noxious Weed C	<i>Bromus tectorum</i>	Noxious Weed C	<i>Bromus tectorum</i>
22	Noxious Weed C	<i>Bromus tectorum</i>	Noxious Weed C	<i>Bromus tectorum</i>
23	Noxious Weed C	<i>Bromus tectorum</i>	Noxious Weed C	<i>Bromus tectorum</i>
24	Noxious Weed C	<i>Bromus tectorum</i>	Noxious Weed C	<i>Bromus tectorum</i>
25	Noxious Weed C	<i>Bromus tectorum</i>	Noxious Weed C	<i>Bromus tectorum</i>
26	Noxious Weed C	<i>Bromus tectorum</i>	Noxious Weed C	<i>Bromus tectorum</i>
27	Noxious Weed C	<i>Bromus tectorum</i>	Noxious Weed C	<i>Bromus tectorum</i>
28	Noxious Weed C	<i>Bromus tectorum</i>	Noxious Weed C	<i>Bromus tectorum</i>
29	Noxious Weed C	<i>Bromus tectorum</i>	Noxious Weed C	<i>Bromus tectorum</i>
30	Noxious Weed C	<i>Bromus tectorum</i>	Noxious Weed C	<i>Bromus tectorum</i>
31	Noxious Weed C	<i>Bromus tectorum</i>	Forb	<i>Lactuca serriola</i>
32	Noxious Weed C	<i>Bromus tectorum</i>	Noxious Weed C	<i>Bromus tectorum</i>
33	Noxious Weed C	<i>Bromus tectorum</i>	Noxious Weed C	<i>Bromus tectorum</i>
34	Grass	<i>Hesperostipa comata</i>	Noxious Weed C	<i>Bromus tectorum</i>
35	Noxious Weed C	<i>Bromus tectorum</i>	Noxious Weed C	<i>Bromus tectorum</i>
36	Noxious Weed C	<i>Bromus tectorum</i>	Noxious Weed C	<i>Bromus tectorum</i>
37	Noxious Weed C	<i>Bromus tectorum</i>	Noxious Weed C	<i>Bromus tectorum</i>
38	Noxious Weed C	<i>Bromus tectorum</i>	Noxious Weed C	<i>Bromus tectorum</i>
39	Noxious Weed C	<i>Bromus tectorum</i>	Noxious Weed C	<i>Bromus tectorum</i>
40	Noxious Weed C	<i>Bromus tectorum</i>	Noxious Weed C	<i>Bromus tectorum</i>
41	Grass	<i>Hesperostipa comata</i>	Noxious Weed C	<i>Bromus tectorum</i>
42	Noxious Weed C	<i>Bromus tectorum</i>	Noxious Weed C	<i>Bromus tectorum</i>
43	Noxious Weed C	<i>Bromus tectorum</i>	Noxious Weed C	<i>Bromus tectorum</i>
44	Noxious Weed C	<i>Bromus tectorum</i>	Noxious Weed C	<i>Bromus tectorum</i>
45	Grass	<i>Hesperostipa comata</i>	Noxious Weed C	<i>Bromus tectorum</i>
46	Grass	<i>Hesperostipa comata</i>	Noxious Weed C	<i>Bromus tectorum</i>
47	Noxious Weed C	<i>Bromus tectorum</i>	Noxious Weed C	<i>Bromus tectorum</i>
48	Noxious Weed C	<i>Bromus tectorum</i>	Noxious Weed C	<i>Bromus tectorum</i>
49	Grass	<i>Hesperostipa comata</i>	Noxious Weed C	<i>Bromus tectorum</i>
50	Noxious Weed C	<i>Bromus tectorum</i>	Noxious Weed C	<i>Bromus tectorum</i>