

REV: 2 05-10-19 J.L.G. (ROUTE CHANGE)

LEGEND:

● PROPOSED LOCATION



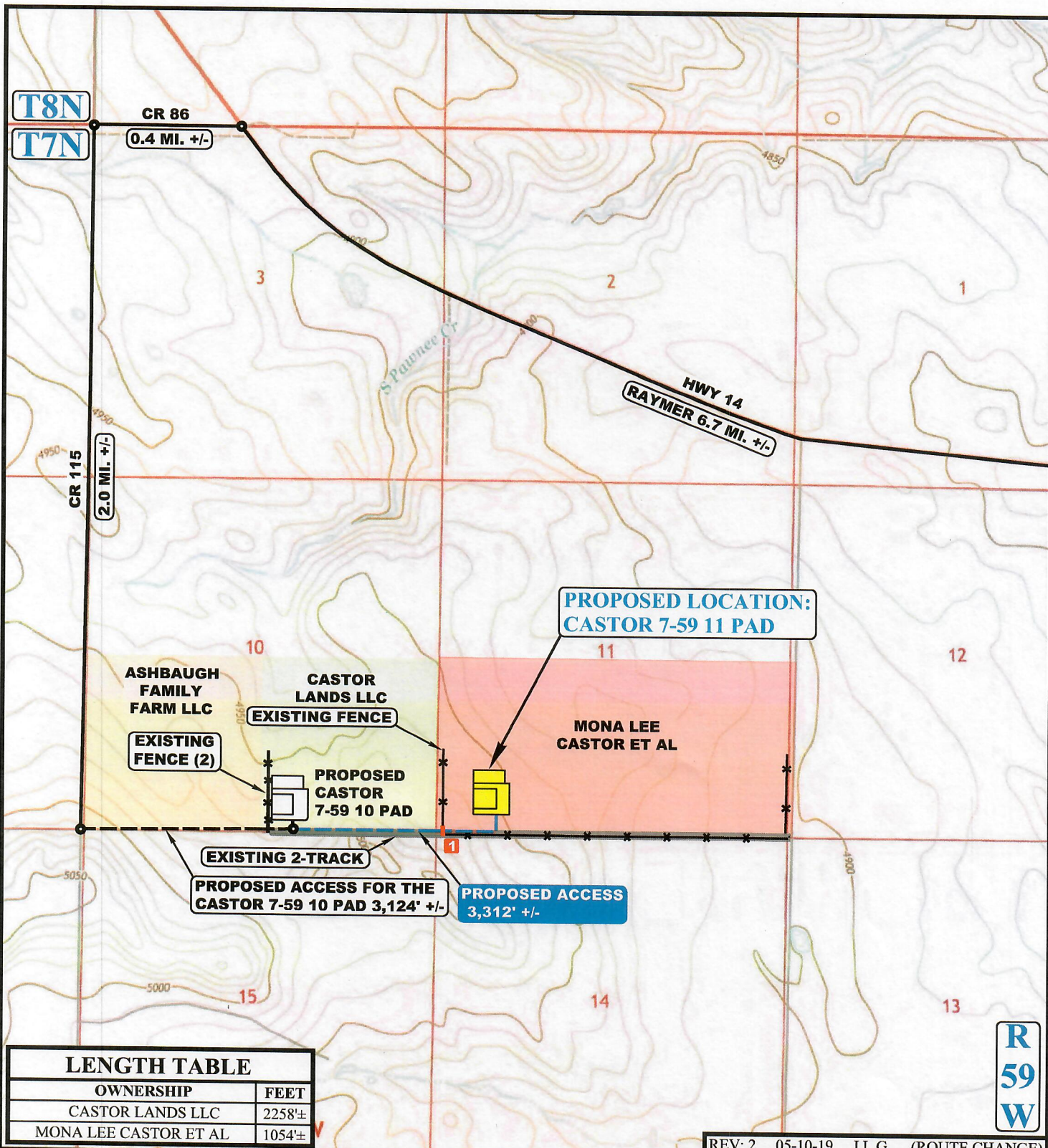
UELS, LLC
Corporate Office * 85 South 200 East
Vernal, UT 84078 * (435) 789-1017



MORNING GUN EXPLORATION LLC

CASTOR 7-59 11 PAD
SW 1/4 SW 1/4, SECTION 11, T7N, R59W, 6th P.M.
WELD COUNTY, COLORADO

| | | | |
|-----------------|------------|----------|-------------|
| SURVEYED BY | J.F., D.E. | 12-11-18 | SCALE |
| DRAWN BY | J.L.G. | 09-04-18 | 1 : 100,000 |
| ACCESS ROAD MAP | | | TOPO A |



NOTE: PARCEL DATA SHOWN HAS BEEN OBTAINED FROM VARIOUS SOURCES AND SHOULD BE USED FOR MAPPING, GRAPHIC AND PLANNING PURPOSES ONLY. NO WARRANTY IS MADE BY UINTAH ENGINEERING AND LAND SURVEYING (UELS) FOR ACCURACY OF THE PARCEL DATA.

LEGEND:

- EXISTING ROAD
- PROPOSED
- EXISTING PIPELINE
- EXISTING FENCE
- 1 INSTALL CATTLE GUARD



MORNING GUN EXPLORATION LLC

CASTOR 7-59 11 PAD
SW 1/4 SW 1/4, SECTION 11, T7N, R59W, 6th P.M.
WELD COUNTY, COLORADO

| | | | |
|-----------------|------------|----------|------------|
| SURVEYED BY | J.F., D.E. | 12-11-18 | SCALE |
| DRAWN BY | J.L.G. | 09-04-18 | 1 : 24,000 |
| ACCESS ROAD MAP | | | TOPO B |



UELS, LLC
Corporate Office * 85 South 200 East
Vernal, UT 84078 * (435) 789-1017