

Inspection Photos

09/16/2019

Operator: FOUNDATION ENERGY
MANAGEMENT LLC - 10112

Location ID: 303599
Yuma County, CO

Aaron Trujillo
NE Reclamation Specialist
COGCC

Inspection Photos

Operator Name: FOUNDATION ENERGY MANAGEMENT LLC - 10112

Location ID: 303599



Photo 1: Photo taken from the north of the location, facing south. Photo shows overview of the location.



Photo 2: Photo taken from the northwest corner of the location, facing south. Photo shows stormwater erosion degradation. Two meter (6.5 feet) robel pole for reference

Inspection Photos

Operator Name: FOUNDATION ENERGY MANAGEMENT LLC - 10112

Location ID: 303599



Photo 3: Photo taken from the northwest corner of the location, facing east. See comments under photo 1.



Photo 4: Photo taken from the north end of the location, facing south. Photo of operator signs.



COLORADO
Oil & Gas Conservation
Commission
Department of Natural Resources

Inspection Photos

Operator Name: FOUNDATION ENERGY MANAGEMENT LLC - 10112

Location ID: 303599



Photo 5: Photo taken from the northeast end of the location, facing southeast. See comments under photo 1.



Photo 6: Photo taken from the location, facing west. Photo shows stormwater erosion degradation. Operator has failed to conduct sufficient stormwater management in accordance with 1002.f. Stormwater erosion is compromising the stability of the location.

Inspection Photos

Operator Name: FOUNDATION ENERGY MANAGEMENT LLC - 10112

Location ID: 303599



Photo 7: Photo taken from the location, facing south. Photo shows Stormwater erosion degradation is compromising the integrity and stability of the location. Additionally, photo shows stormwater runoff has also caused degradation to the adjacent lands below the location. Two meter (6.5 feet) metal pole for reference



Photo 8: Photo taken from the west end of the location, facing north east. Photo shows stormwater erosion degradation on location. Photo also shows erosion degradation to the adjacent lands due to stormwater runoff from the location.

Inspection Photos

Operator Name: FOUNDATION ENERGY MANAGEMENT LLC - 10112

Location ID: 303599



Photo 9: Photo taken from the adjacent lands south of the location, facing north. Photo shows stormwater runoff from the location has caused degradation to the adjacent lands.



Photo 10: Photo taken from the adjacent lands south of the location, facing south. Photo shows erosion degradation and sediment deposition from stormwater runoff on the adjacent lands.

Inspection Photos

Operator Name: FOUNDATION ENERGY MANAGEMENT LLC - 10112

Location ID: 303599



Photo 11: Photo taken from the adjacent lands south of the location, facing north. Photo shows erosion degradation and sediment deposition from stormwater runoff on the adjacent lands.



Photo 12: Photo taken from an intermittent drainage south of the location, facing northeast. Photo shows stormwater runoff from the location has caused degradation to the adjacent lands, as well as sediment deposition with an intermittent drainage/stream.

Inspection Photos

Operator Name: FOUNDATION ENERGY MANAGEMENT LLC - 10112

Location ID: 303599



Photo 13: Photo taken from an intermittent drainage south of the location, facing north. See comments under photo 12.

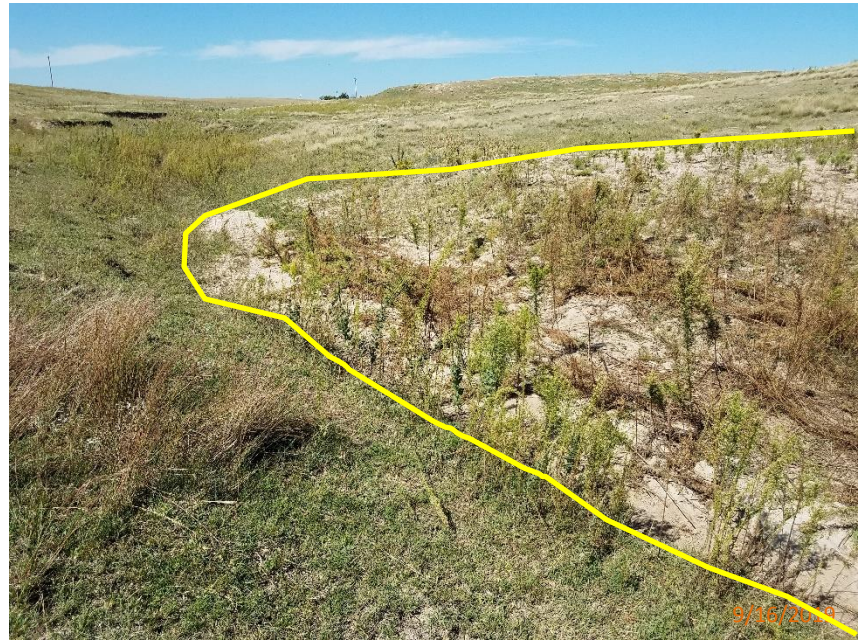


Photo 14: Photo taken from an intermittent drainage south of the location, facing west. See comments under photo 12.

Inspection Photos

Operator Name: FOUNDATION ENERGY MANAGEMENT LLC - 10112

Location ID: 303599



Photo 15: Photo taken from the gully forming to the south of the location. Robel pole for reference. Each white/black marking on pole represent $\frac{1}{4}$ meter (0.8 feet). There are areas of the gully that are 1.5 to 2 feet in depth.



Inspection Photos

Operator Name: FOUNDATION ENERGY MANAGEMENT LLC - 10112

Location ID: 303599



Photo 16: 2017 COGIS aerial imagery of the location.



COLORADO
Oil & Gas Conservation
Commission
Department of Natural Resources

Inspection Photos

Operator Name: FOUNDATION ENERGY MANAGEMENT LLC - 10112

Location ID: 303599

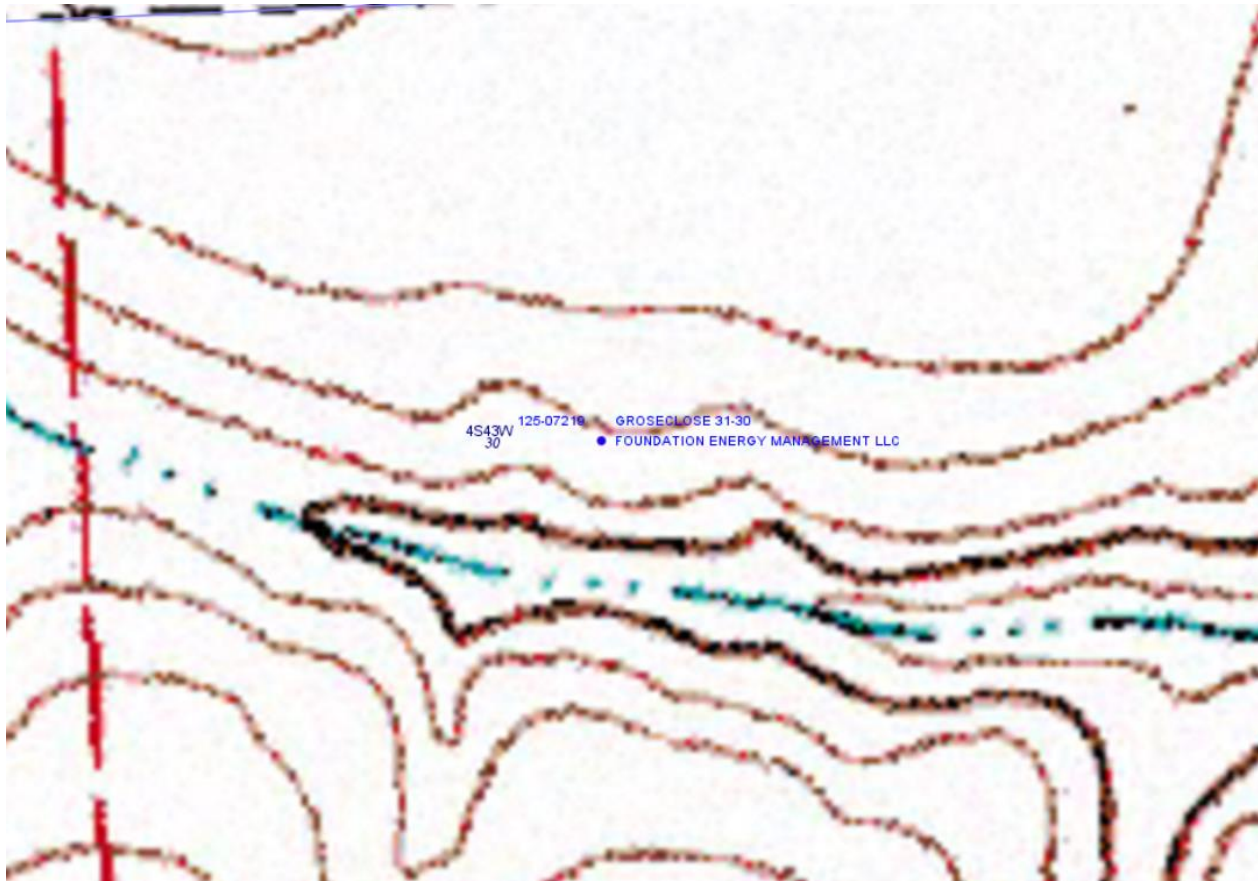


Photo 17: COGIS topographic imagery of the location. Photo shows drainage south of the location is classified as an intermittent stream.



COLORADO
Oil & Gas Conservation
Commission
Department of Natural Resources