

Interim Reclamation and Stormwater Inspection

September 17, 2019

Operator: BAYSWATER EXPLORATION AND PRODUCTION LLC - #10261

Location ID: 456151

Inspection Document #: 697500600

Weld County, CO

Lot 2 Section 31 T7N R66W

Chris Binschus
Reclamation Specialist, COGCC



COLORADO
Oil & Gas Conservation
Commission

Department of Natural Resources

Inspection Photos
Location Name: Hester Farms II /31-H Pad
Location ID: 456151



Photo 1. Photo taken from the southern topsoil stockpile, facing North. Photo illustrates Operator has failed to prevent weed establishment on the topsoil stockpile per Rule 1002.c. Also, this topsoil stockpile is from the well location. Operator has failed to salvage topsoil from the production facility. Refer to photos 10-12.



Photo 2. Photo taken from the southern topsoil stockpile, facing North. See comments under Photo 1.

Inspection Photos
Location Name: Hester Farms II /31-H Pad
Location ID: 456151

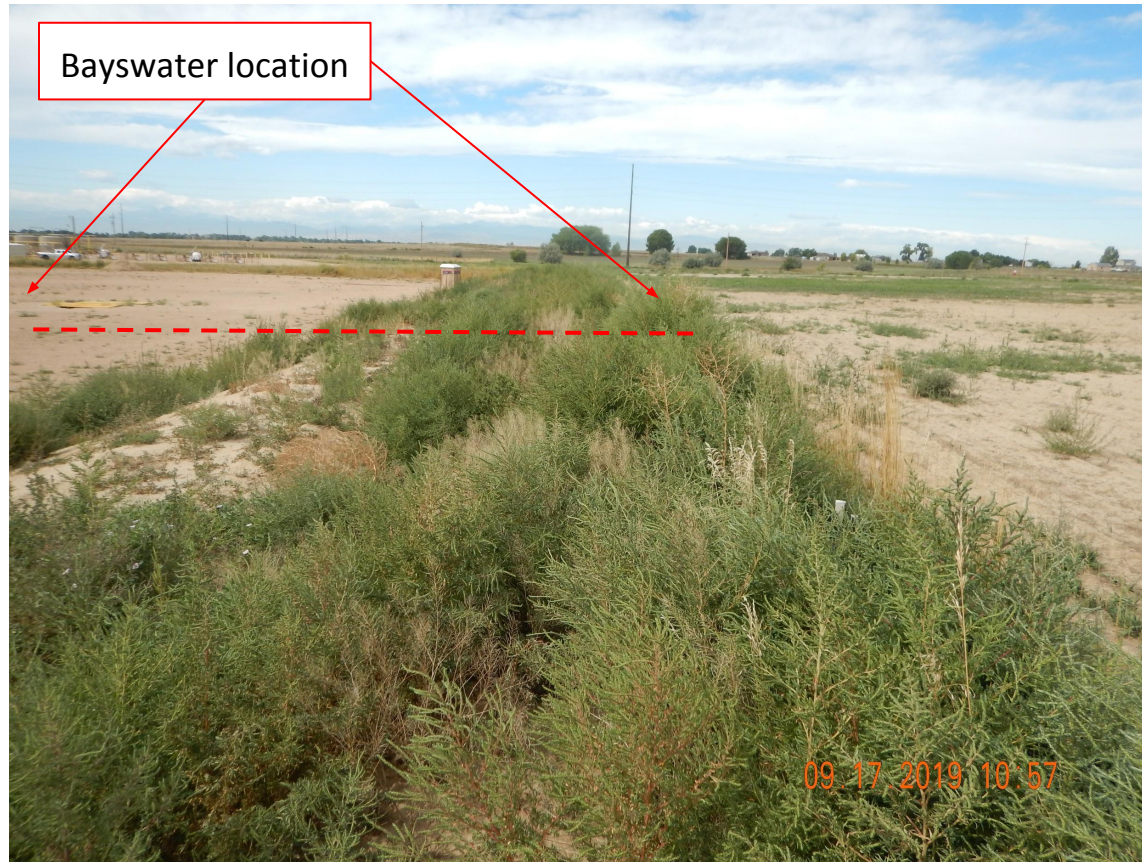


Photo 3. Photo taken from the northeast perimeter of the well location, facing West. Photo illustrates the Operator has failed to control and manage undesirable and noxious weeds on cropland.

Inspection Photos
Location Name: Hester Farms II /31-H Pad
Location ID: 456151



Photo 4. Photo taken from the northern well location. Photo illustrates a localized area of staining that the Operator has failed to clean up per Rule 907.e.

Inspection Photos
Location Name: Hester Farms II /31-H Pad
Location ID: 456151



Photo 5. Photo taken from the western well location, facing Southwest. See comments under Photo 3 regarding weeds.

Inspection Photos
Location Name: Hester Farms II /31-H Pad
Location ID: 456151



Photo 6. Photo taken from the southern well location, facing East. Photo illustrates unused equipment be stored on location and unmanaged weeds.

Inspection Photos
Location Name: Hester Farms II /31-H Pad
Location ID: 456151



Photo 7. Photo taken from the southeastern well location, facing South. Photo illustrates unused equipment being stored on location.

Inspection Photos
Location Name: Hester Farms II /31-H Pad
Location ID: 456151



Photo 8. Photo taken from the wellhead area, facing North. Operator has failed to put cellar covers around the wellheads for public safety per Rule 605.c. This is also a safety hazard for wildlife.

Inspection Photos
Location Name: Hester Farms II /31-H Pad
Location ID: 456151



Photo 9. Photo taken from the southeastern perimeter of the well pad, facing North. Photo illustrates unmanaged Canada thistle.

Inspection Photos
Location Name: Hester Farms II /31-H Pad
Location ID: 456151



Photo 10. Photo taken from the western production facility, facing East. COGCC staff has evidence from the previous inspection and current conditions to illustrate the Operator failed to salvage topsoil from the production facility. There was no observed topsoil stockpile around the production facility.

Inspection Photos
Location Name: Hester Farms II /31-H Pad
Location ID: 456151



Photo 11. Photo taken from the excavated area within the production facility, facing West. Refer to the following photo demonstrating the Operator didn't salvage any topsoil from the production facility.

Inspection Photos

Location Name: Hester Farms II /31-H Pad

Location ID: 456151



Photo 12. Photo taken from the excavated area within the production facility. Photo illustrates ~2 feet of material was placed on top of the original contour without first salvaging topsoil. Smooth brome is shown growing out from the original contour which demonstrates the Operator didn't salvage any topsoil.

Inspection Photos
Location Name: Hester Farms II /31-H Pad
Location ID: 456151



Photo 13. Photo taken from the excavated area. Photo illustrates a dead bird.