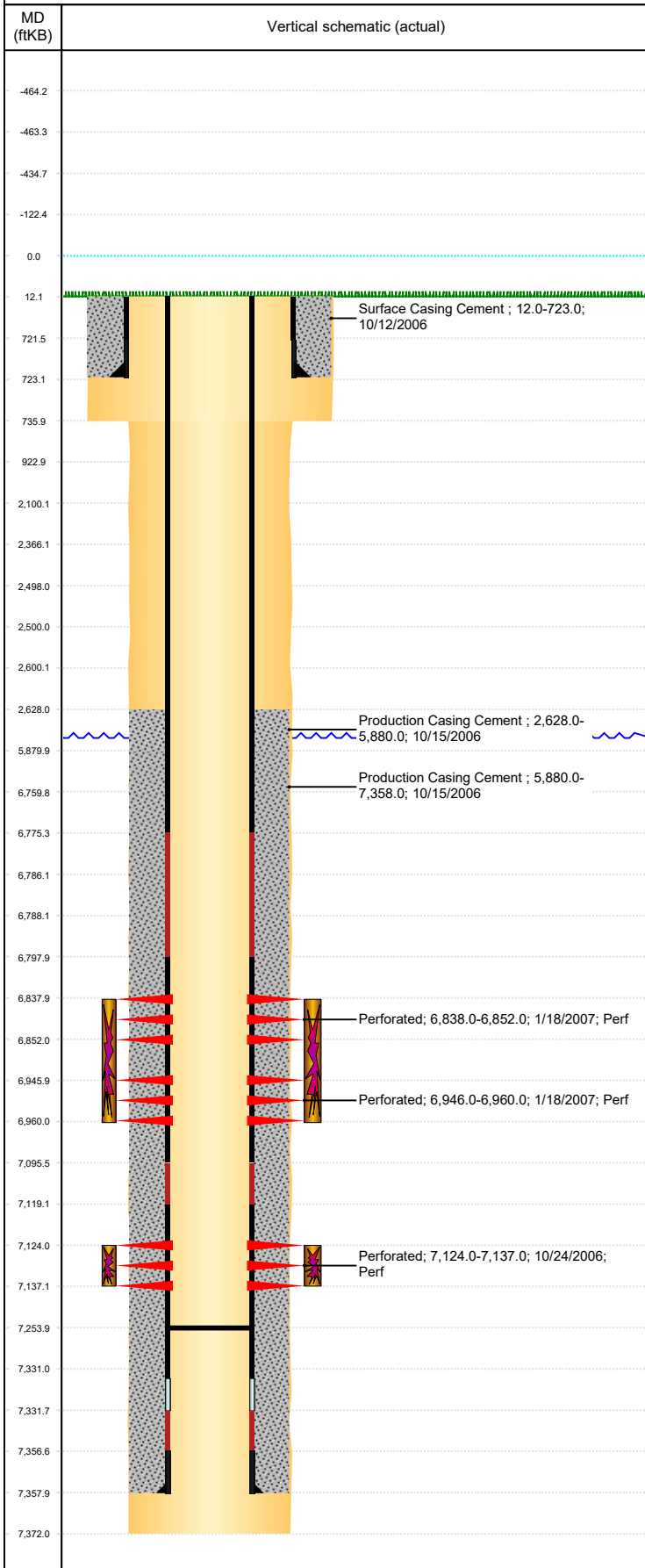


Well Name: MAGNUSON 19-23

VERTICAL, ORIGINAL HOLE, 9/18/2019 10:52:42 AM



Well Header									
API 05-123-27322		Business Unit DJ BASIN		District 15		Well Config VERTICAL			
KB - GL / MSL (ft... 12.00		Spud Date 10/11/2006		P & A Date		Well Production Status SI			SoRT No
Comment DISCREPANCY: NIOBRARA PERFS- ST 6878-6960', DRL RPTS 6838-6960'. STATE SHOWS SHUT IN SINCE JAN 2016.									
Surface Location (Congressional)									
Qtr 3 SE	Qtr 4 SE	Section 19	Twnshp 7	Twnsh... N	Range 64	Rng E/... W	Actual Latitude (°) 40.55479312	Actual Longitude (°) -104.58764246	
Wellbore Sections									
Section Des			Size (in)			Act Top, MD (ftKB)		Act Btm, MD (ftKB)	
SURFACE			12 1/4			12		736	
PRODUCTION			7 7/8			736		7,372	
Casing Strings									
Csg Des			Run Date		OD (in)	Wt/Len (lb/ft)	Grade	Top, MD (ftKB)	MD (ftKB)
Surface			10/12/2006		8 5/8	24.00	J-55	12.0	723.0
Production			10/15/2006		4 1/2	11.60	M-80	12.0	7,358.0
Cement									
Des					Start Date		Top (ftKB)		Btm (ftKB)
Surface Casing Cement					10/12/2006		12.0		723.0
Production Casing Cement					10/15/2006		2,628.0		5,880.0
Production Casing Cement					10/15/2006		5,880.0		7,358.0
Zone Statuses									
Zone Name		Status Date	Status	Fluid Type	Job			Prod Method	
NIOBRARA		2/14/2007	PR	Water	DRILLING/COMPLETION - ORIGINAL, 10/11/200...			Flowing	
NIOBRARA		12/5/2009	PR						
CODELL		12/5/2009	PR						
CODELL		3/10/2017	SI					Flowing	
Perforation Data									
Linked Zone			Bnch/Stg	Entered Shot Total	Top (ftKB)		Btm (ftKB)		Date
NIOBRARA, ORIGINAL HOLE			A	84	6,838.00		6,852.00		1/18/2007
NIOBRARA, ORIGINAL HOLE			B	84	6,946.00		6,960.00		1/18/2007
CODELL, ORIGINAL HOLE				52	7,124.00		7,137.00		10/24/2006
Stimulation Intervals									
Zone					Start Date		Top (ftKB)		Btm (ftKB)
NIOBRARA, ORIGINAL HOLE					1/18/2007		6,838.0		6,960.0
CODELL, ORIGINAL HOLE					1/18/2007		7,124.0		7,137.0
Other In Hole									
Run Date		Des				OD (in)	Top (ftKB)		Btm (ftKB)
Logs									
Date		Type					Top, MD (ftKB)		Btm, MD (ftKB)
10/15/2006		COMPENSATED DENSITY					2,000.0		7,352.0
10/15/2006		INDUCTION					726.0		7,372.0
10/24/2006		CBL/CCL/GR					2,514.0		7,323.0
9/18/2018		GYRO					12.0		7,000.0
Plug Back Total Depths									
Date		Type			Com				Depth (ftKB)
10/24/2006		FILL			DEPTH LOGGER FROM CBL				7,325.0
1/23/2007		FILL			CLEAN OUT				7,254.0