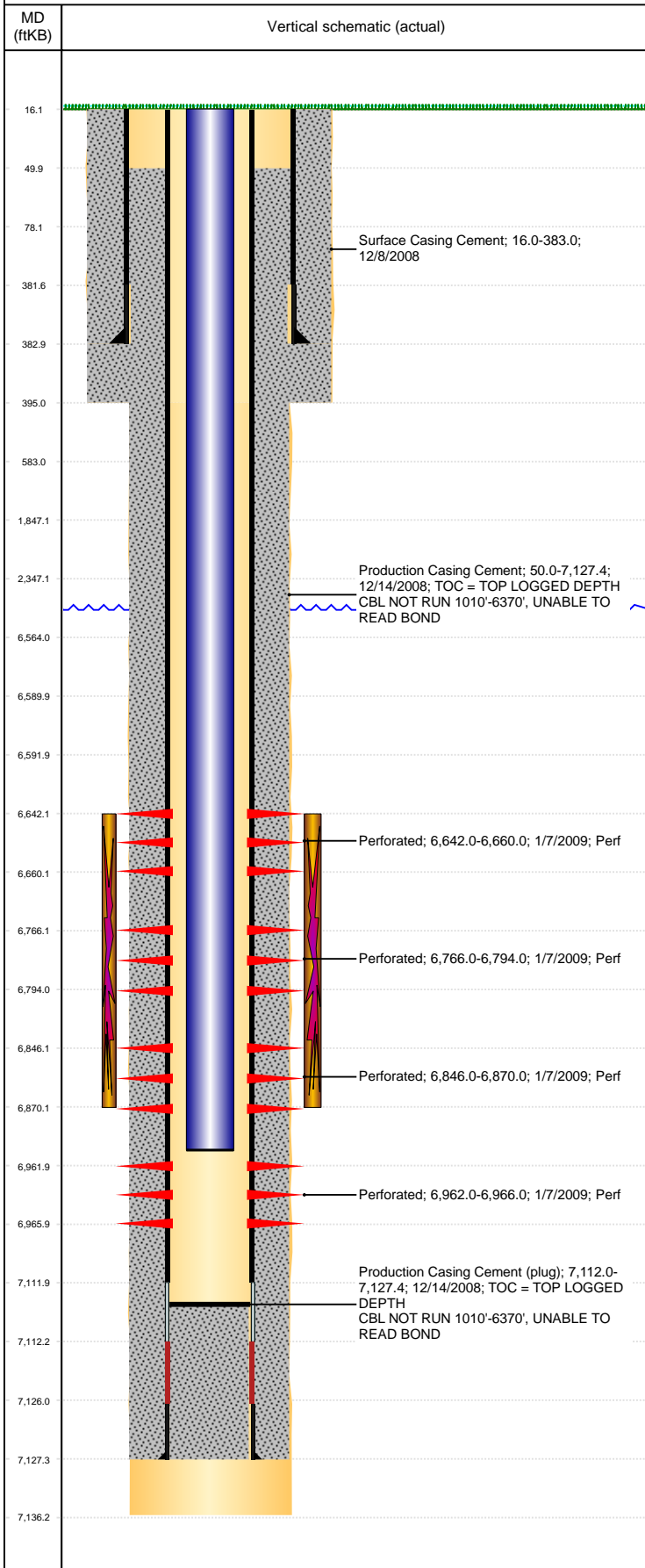


Well Name: GWAA 03-11

VERTICAL, ORIGINAL HOLE, 8/15/2019 2:44:33 PM



Well Header									
API 05-123-26992		Business Unit DJ BASIN			District 15		Well Config VERTICAL		
KB - GL / MSL (ft... 16.00		Spud Date 12/7/2008		P & A Date		Well Production Status PR			SoRT No
Comment CODELL NOT REPORTED AS FRAC'D									
Surface Location (Congressional)									
Qtr 3 NE	Qtr 4 NE	Section 3	Twنشp 5	Twنش... N	Range 65	Rng E/... W	Actual Latitude (°) 40.43338000		Actual Longitude (°) -104.64274000
Wellbore Sections									
Section Des			Size (in)			Act Top, MD (ftKB)		Act Btm, MD (ftKB)	
SURFACE			12 1/4			16		395	
PRODUCTION			7 7/8			395		7,136	
Casing Strings									
Csg Des			Run Date		OD (in)	Wt/Len (lb/ft)	Grade	Top, MD (ftKB)	MD (ftKB)
Surface			12/8/2008		8 5/8	24.00	J-55	16.0	383.0
Production			12/13/2008		4 1/2	11.60	M-80	16.0	7,127.4
Cement									
Des					Start Date		Top (ftKB)		Btm (ftKB)
Surface Casing Cement					12/8/2008		16.0		383.0
Production Casing Cement					12/14/2008		50.0		7,127.4
Zone Statuses									
Zone Name		Status Date	Status	Fluid Type	Job			Prod Method	
CODELL		2/4/2009	PR		DRILLING/COMPLETION - ORIGINAL, 12/7/2008...				
NIOBRARA		2/4/2009	PR		DRILLING/COMPLETION - ORIGINAL, 12/7/2008...				
Perforation Data									
Linked Zone			Bnch/Stg	Entered Shot Total	Top (ftKB)		Btm (ftKB)		Date
NIOBRARA, ORIGINAL HOLE			A	36	6,642.00		6,660.00		1/7/2009
NIOBRARA, ORIGINAL HOLE			B	112	6,766.00		6,794.00		1/7/2009
NIOBRARA, ORIGINAL HOLE			C	96	6,846.00		6,870.00		1/7/2009
CODELL, ORIGINAL HOLE				16	6,962.00		6,966.00		1/7/2009
Stimulation Intervals									
Zone				Start Date		Top (ftKB)		Btm (ftKB)	
NIOBRARA, ORIGINAL HOLE				1/8/2009		6,642.0		6,870.0	
Other In Hole									
Run Date		Des				OD (in)	Top (ftKB)		Btm (ftKB)
3/21/2019		Plunger Lift				1 7/8			
Logs									
Date		Type				Top, MD (ftKB)		Btm, MD (ftKB)	
12/13/2008		COMPENSATED DENSITY				3,500.0		7,117.0	
12/13/2008		INDUCTION				383.0		7,137.0	
1/5/2009		CBL/CCL/GR				50.0		7,135.0	
12/30/2014		GYRO				10.0		6,850.0	
Plug Back Total Depths									
Date		Type		Com				Depth (ftKB)	
1/5/2009		FILL		DEPTH LOGGER ON CBL				7,037.0	
12/9/2009		FILL		CLEAN OUT				7,112.0	