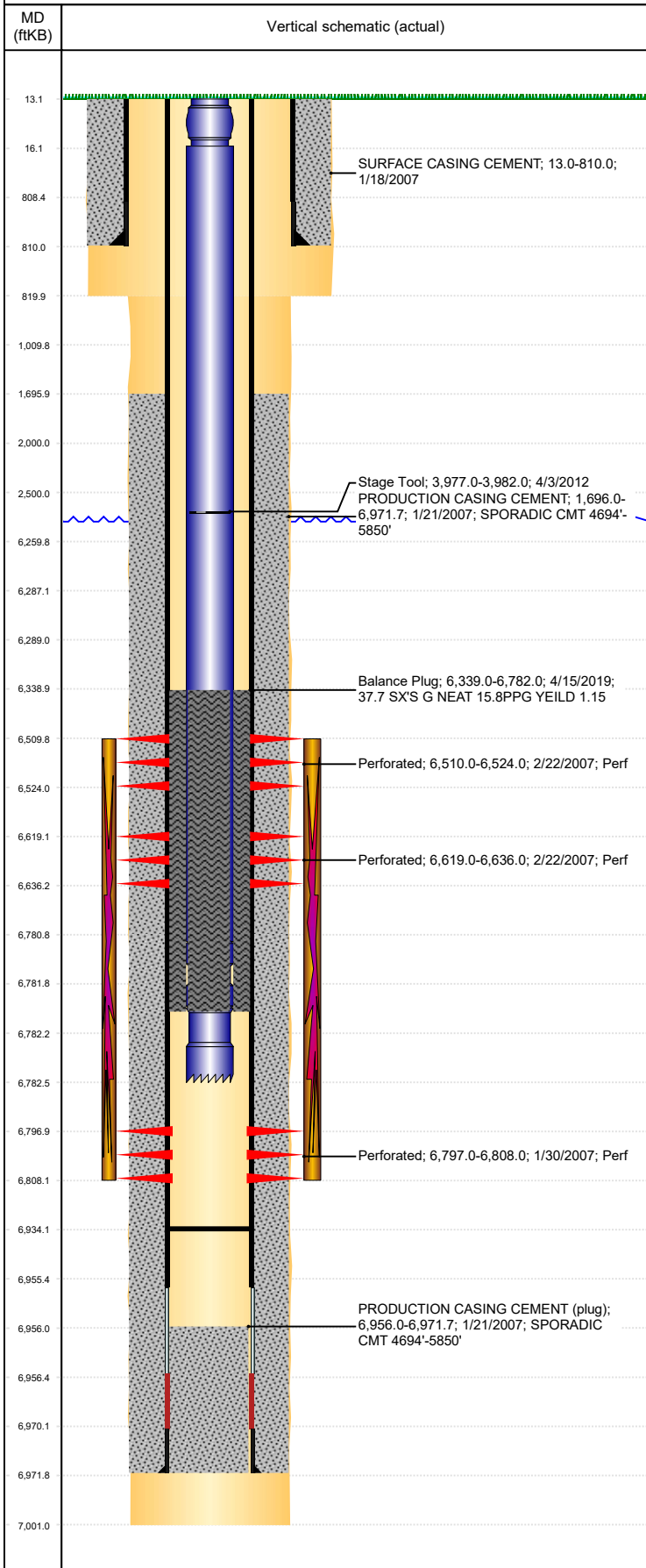


Well Name: LARSON USX AA19-03

VERTICAL, ORIGINAL HOLE, 9/18/2019 10:07:21 AM



Well Header									
API 05-123-24480		Business Unit DJ BASIN			District 15		Well Config VERTICAL		
KB - GL / MSL (ft... 13.00		Spud Date 1/17/2007		P & A Date		Well Production Status TA			SoRT Yes
Comment									
Surface Location (Congressional)									
Qtr 3 NE	Qtr 4 NW	Section 19	Twnshp 6	Twنش... N	Range 63	Rng E/... W	Actual Latitude (°) 40.47715932	Actual Longitude (°) -104.48160022	
Wellbore Sections									
Section Des			Size (in)			Act Top, MD (ftKB)		Act Btm, MD (ftKB)	
SURFACE			12 1/4			13		820	
PRODUCTION			7 7/8			820		7,001	
Casing Strings									
Csg Des		Run Date		OD (in)	Wt/Len (lb/ft)	Grade	Top, MD (ftKB)	MD (ftKB)	
Surface		1/18/2007		8 5/8	24.00	J-55	13.0	810.0	
Production		1/21/2007		4 1/2	11.60	M-80	13.0	6,971.7	
Cement									
Des				Start Date		Top (ftKB)		Btm (ftKB)	
SURFACE CASING CEMENT				1/18/2007		13.0		810.0	
PRODUCTION CASING CEMENT				1/21/2007		1,696.0		6,971.7	
Balance Plug				4/15/2019		6,339.0		6,782.0	
Zone Statuses									
Zone Name	Status Date	Status	Fluid Type	Job				Prod Method	
CODELL	3/1/2007	PR		DRILLING/COMPLETION - ORIGINAL, 1/17/2007...					
NIORBARA	3/1/2007	PR		DRILLING/COMPLETION - ORIGINAL, 1/17/2007...					
Perforation Data									
Linked Zone		Bnch/Stg	Entered Shot Total	Top (ftKB)		Btm (ftKB)		Date	
NIORBARA, ORIGINAL HOLE		A	56	6,510.00		6,524.00		2/22/2007	
NIORBARA, ORIGINAL HOLE		B	68	6,619.00		6,636.00		2/22/2007	
CODELL, ORIGINAL HOLE			44	6,797.00		6,808.00		1/30/2007	
Stimulation Intervals									
Zone			Start Date			Top (ftKB)		Btm (ftKB)	
NIORBARA-CODELL, ORIGINAL HOLE			2/26/2007			6,510.0		6,808.0	
Other In Hole									
Run Date		Des				OD (in)	Top (ftKB)	Btm (ftKB)	
Logs									
Date		Type				Top, MD (ftKB)		Btm, MD (ftKB)	
1/21/2007		COMPENSATED DENSITY				2,590.0		6,981.0	
1/21/2007		INDUCTION				13.0		7,001.0	
1/29/2007		CBL/CCL/GR				1,568.0		6,932.0	
1/19/2016		GYRO				0.0		6,750.0	
Plug Back Total Depths									
Date		Type		Com				Depth (ftKB)	
1/21/2007		FLOAT SHOE W/ COLLAR		FLOAT SHOE W/COLLAR				6,956.0	
1/29/2007		FILL		DEPTH LOGGER ON CBL				6,934.0	