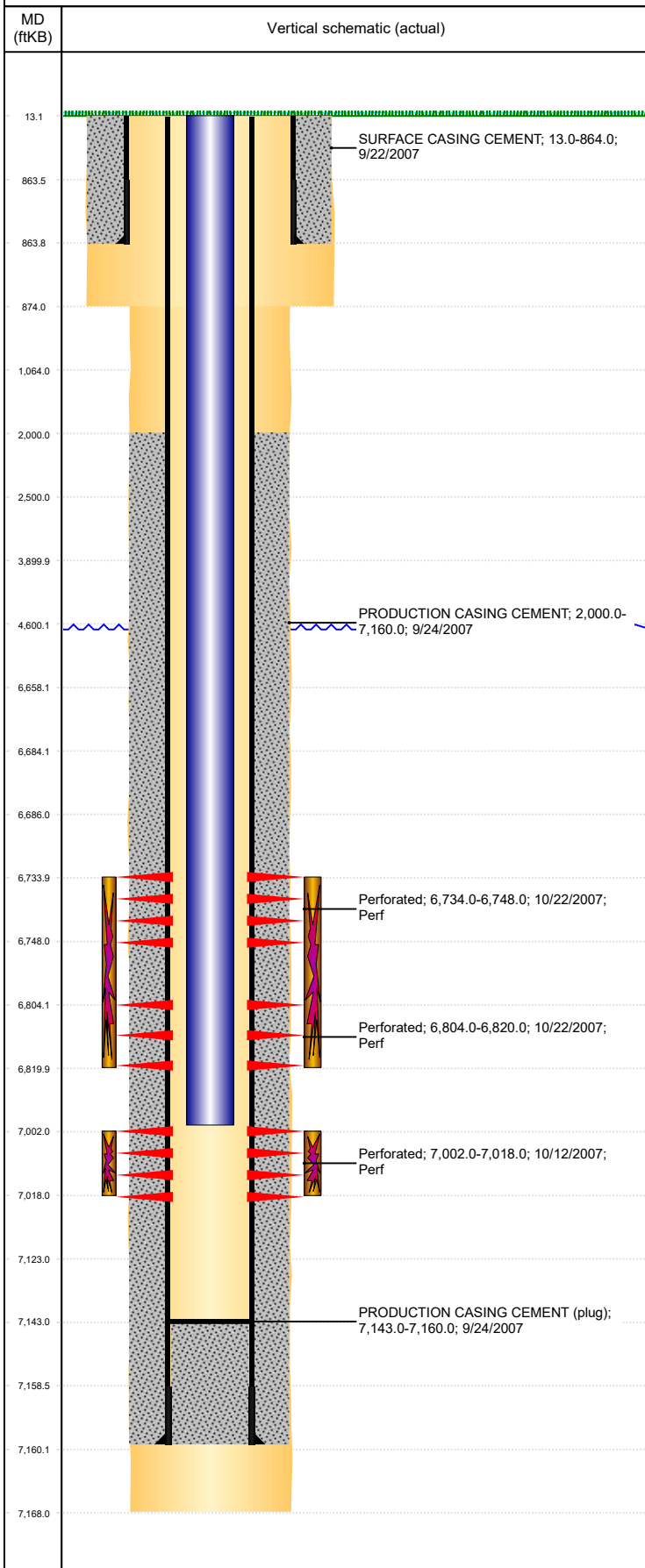


**Well Name: JOHNSON C29-18**

VERTICAL, ORIGINAL HOLE, 9/18/2019 10:49:38 AM



Well Header									
API 05-123-25963		Business Unit DJ BASIN			District 15		Well Config VERTICAL		
KB - GL / MSL (ft... 13.00		Spud Date 9/21/2007		P & A Date		Well Production Status SI			SoRT No
Comment									
Surface Location (Congressional)									
Qtr 3 SE	Qtr 4 NW	Section 29	Twnshp 4	Twnsh... N	Range 64	Rng E/... W	Actual Latitude (°) 40.28689759	Actual Longitude (°) -104.57514619	
Wellbore Sections									
Section Des			Size (in)			Act Top, MD (ftKB)		Act Btm, MD (ftKB)	
SURFACE			12 1/4			13		874	
PRODUCTION			7 7/8			874		7,168	
Casing Strings									
Csg Des			Run Date		OD (in)	Wt/Len (lb/ft)	Grade	Top, MD (ftKB)	MD (ftKB)
Surface			9/22/2007		8 5/8	24.00	J-55	13.0	864.0
Production			9/24/2007		4 1/2	11.60	M-80	13.0	7,160.0
Cement									
Des					Start Date		Top (ftKB)		Btm (ftKB)
SURFACE CASING CEMENT					9/22/2007		13.0		864.0
PRODUCTION CASING CEMENT					9/24/2007		2,000.0		7,160.0
Zone Statuses									
Zone Name	Status Date	Status	Fluid Type	Job				Prod Method	
CODELL	11/29/2016	SI	Water					Flowing	
CODELL	3/22/2017	SI							
NIOBRARA	4/14/2010	PR							
NIOBRARA	3/22/2017	SI							
Perforation Data									
Linked Zone		Bnch/Stg	Entered Shot Total	Top (ftKB)		Btm (ftKB)		Date	
NIOBRARA, ORIGINAL HOLE		A	56	6,734.00		6,748.00		10/22/2007	
NIOBRARA, ORIGINAL HOLE		B	64	6,804.00		6,820.00		10/22/2007	
CODELL, ORIGINAL HOLE			64	7,002.00		7,018.00		10/12/2007	
Stimulation Intervals									
Zone				Start Date		Top (ftKB)		Btm (ftKB)	
NIOBRARA, ORIGINAL HOLE				10/22/2007		6,734.0		6,820.0	
CODELL, ORIGINAL HOLE				10/22/2007		7,002.0		7,018.0	
Other In Hole									
Run Date		Des				OD (in)	Top (ftKB)	Btm (ftKB)	
Logs									
Date		Type				Top, MD (ftKB)		Btm, MD (ftKB)	
9/9/2007		PULSED NEUTRON				864.0		7,114.0	
10/4/2007		CBL/CCL/GR				13.0		7,116.0	
Plug Back Total Depths									
Date		Type		Com				Depth (ftKB)	
10/4/2007		CEMENT PLUG		DEPTH-LOGGER/CBL				7,123.0	
2/11/2008		FLOAT COLLAR						7,143.0	