

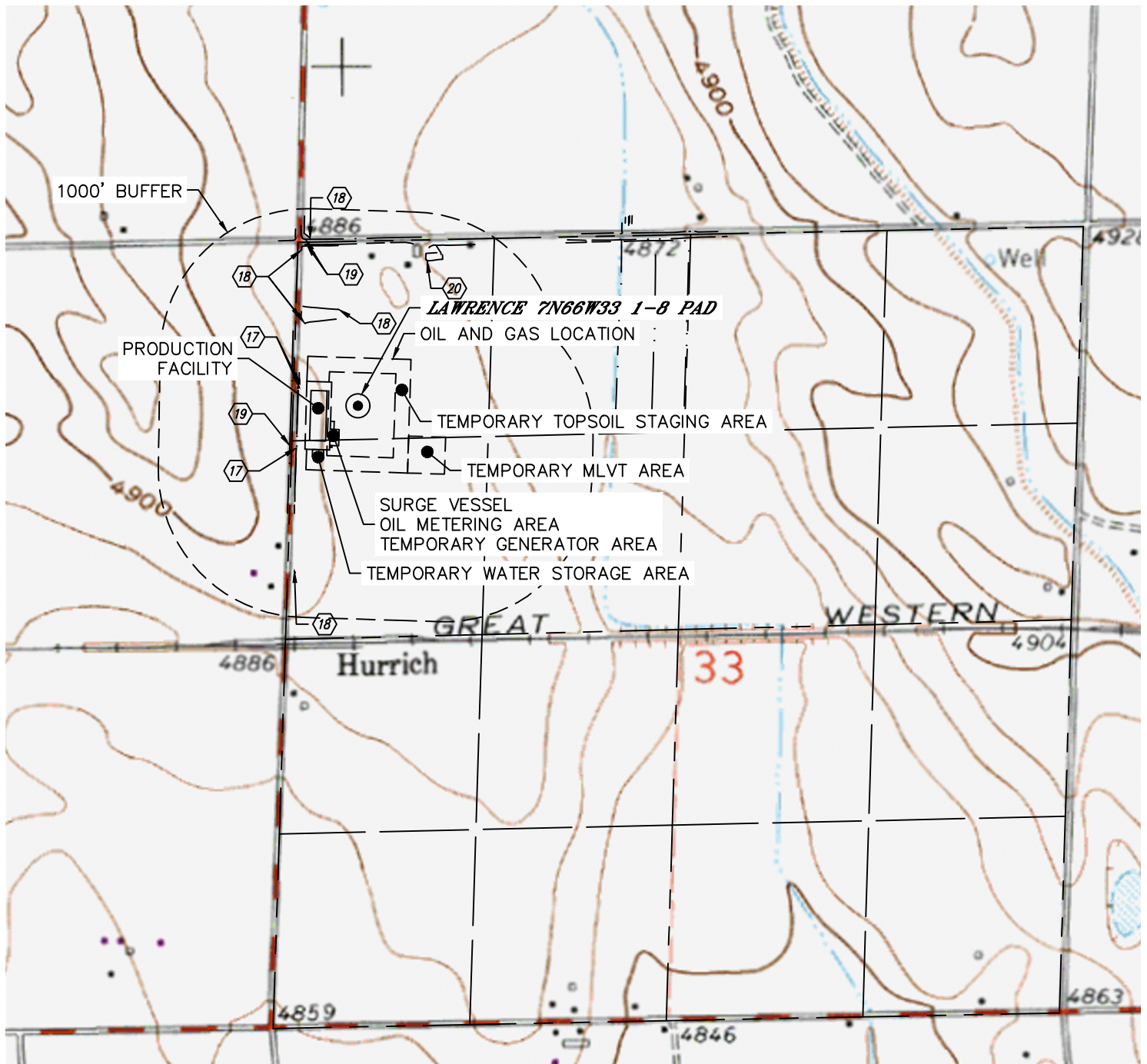


Lat40°, Inc. 6250 W. 10th Street, Unit 2, Greeley, CO 970-515-5294

# HYDROLOGY MAP

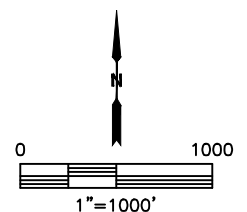
LAWRENCE 7N66W33 1-8 PAD

SECTION: 33  
TOWNSHIP: 7N  
RANGE: 66W  
6TH. P.M.  
WELD COUNTY, CO



DISTANCES MEASURED FROM THE EDGE OF THE OIL AND GAS LOCATION.

- ⑰ CONCRETE DITCH 48', 49' & 60' W
- ⑱ DITCH 224' & 258' NW, 324', 798' & 720' N, 689' S
- ⑲ BARROW DITCH 102' W, 756' & 791' NW
- ⑳ POND 678' NE



NEAREST DOWN GRADIENT SURFACE WATER: CONCRETE DITCH 48' W

DATE: 9/5/2019  
PROJECT#: 2018155-02