



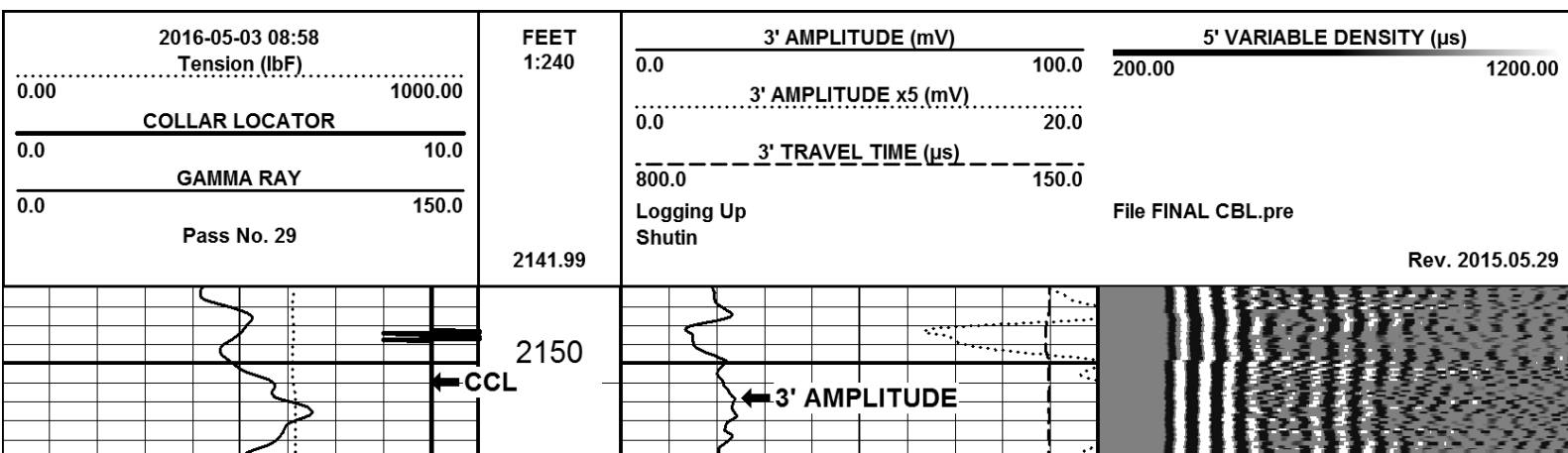
**CEMENT BOND
GAMMA RAY
CCL**

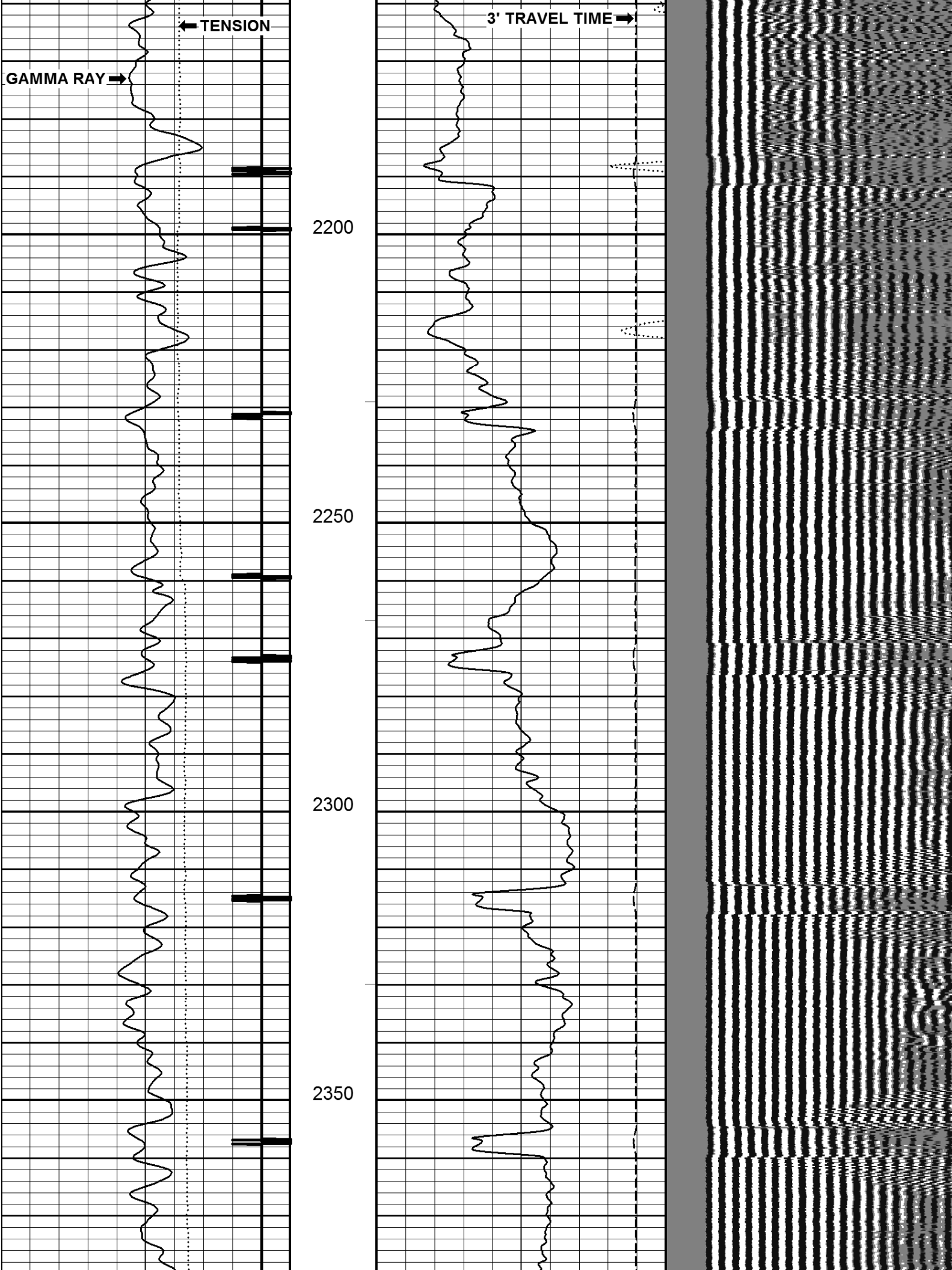
[illegible]

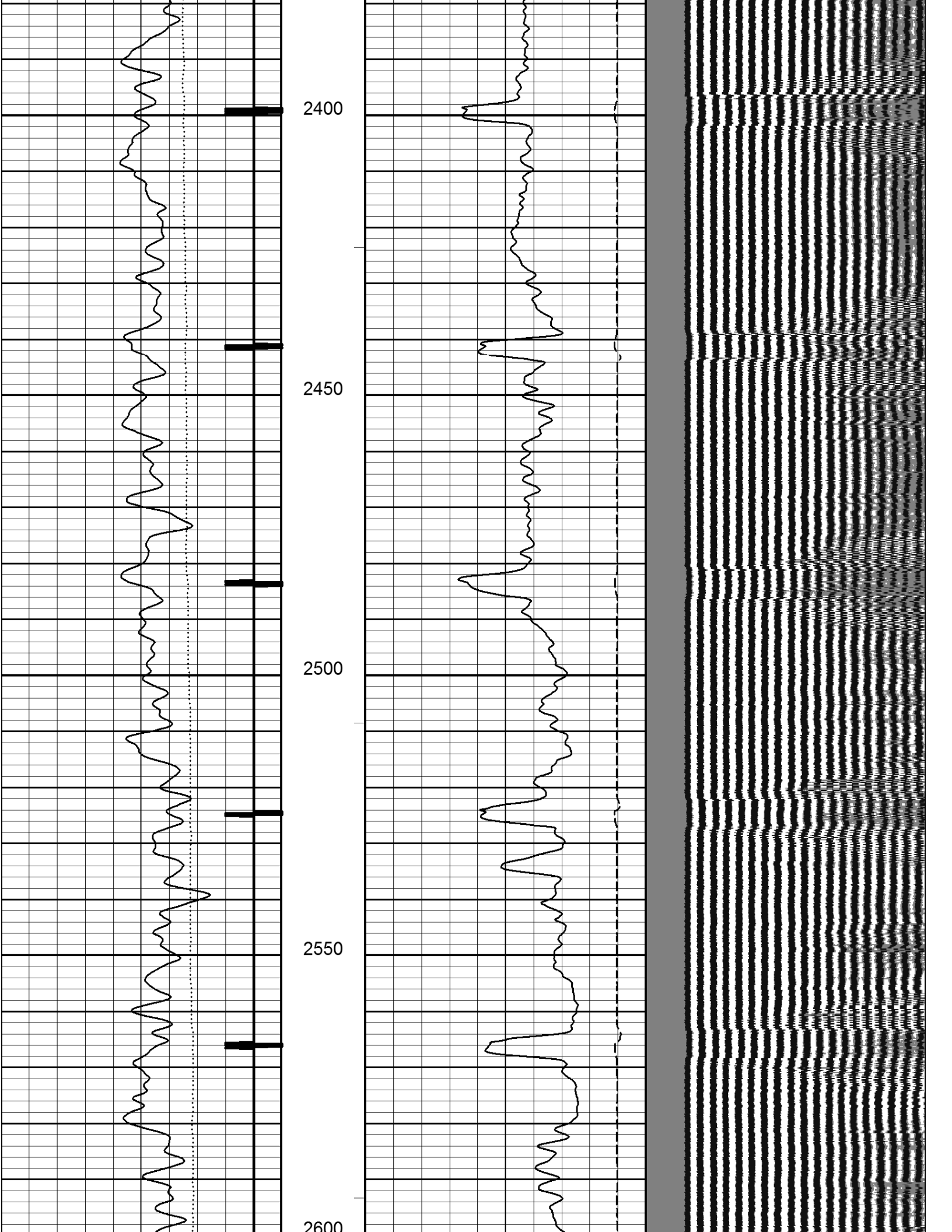
Remarks:

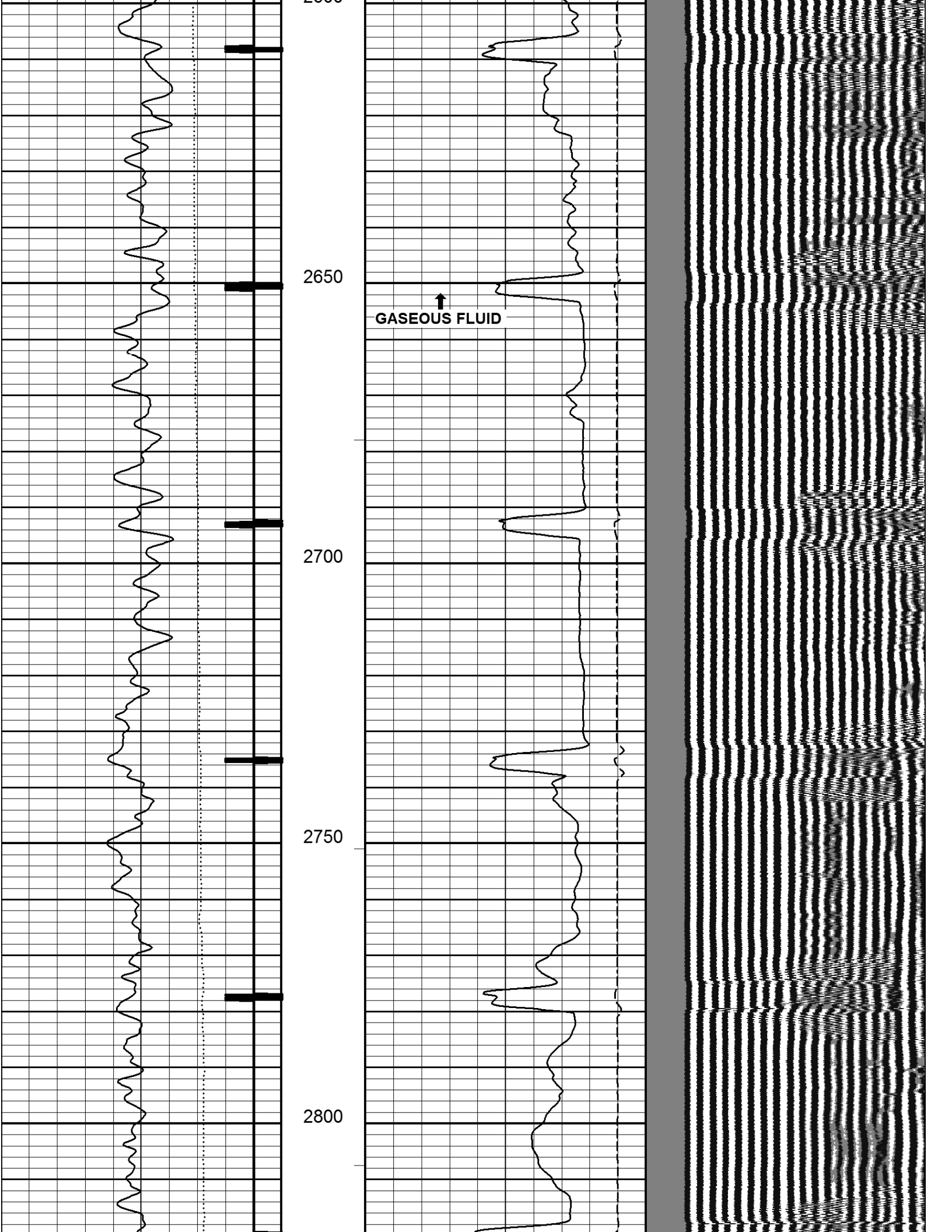
Previous Well Information	
Depth Control Log	
Perforated	
Bridge Plug Set At	
Cement Retainer Set At	
Production Packer Set At	

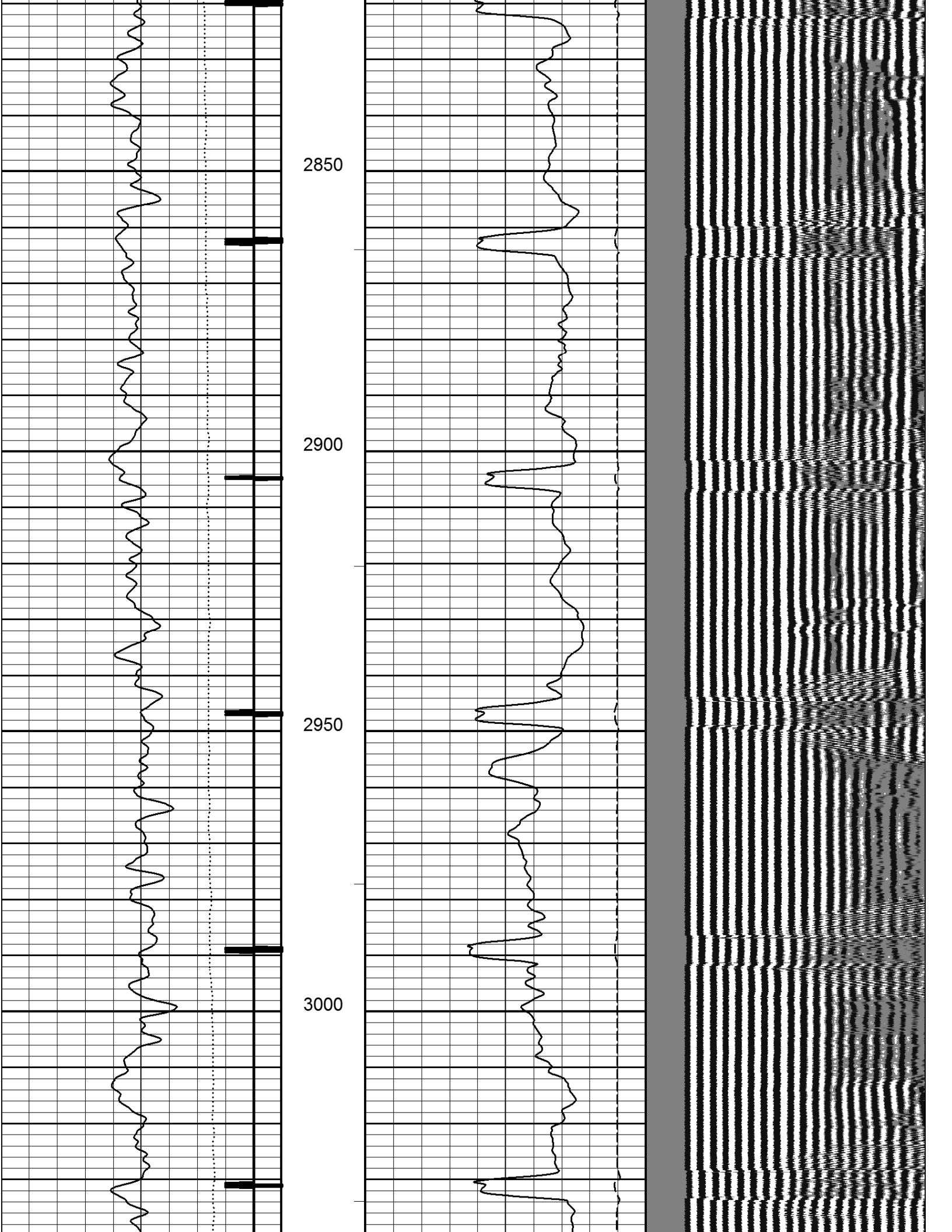
All interpretations are opinions based on inferences from electrical or other measurements and we cannot, and do not guarantee the accuracy or correctness of any interpretations, and we shall not, except in the case of gross or willful negligence on our part, be liable or responsible for any loss, costs, damages or expenses incurred or sustained by anyone resulting from any interpretation made by any of our officers, agents, or employees. These interpretations are also subject to our general terms and conditions as set out in our current price schedule.

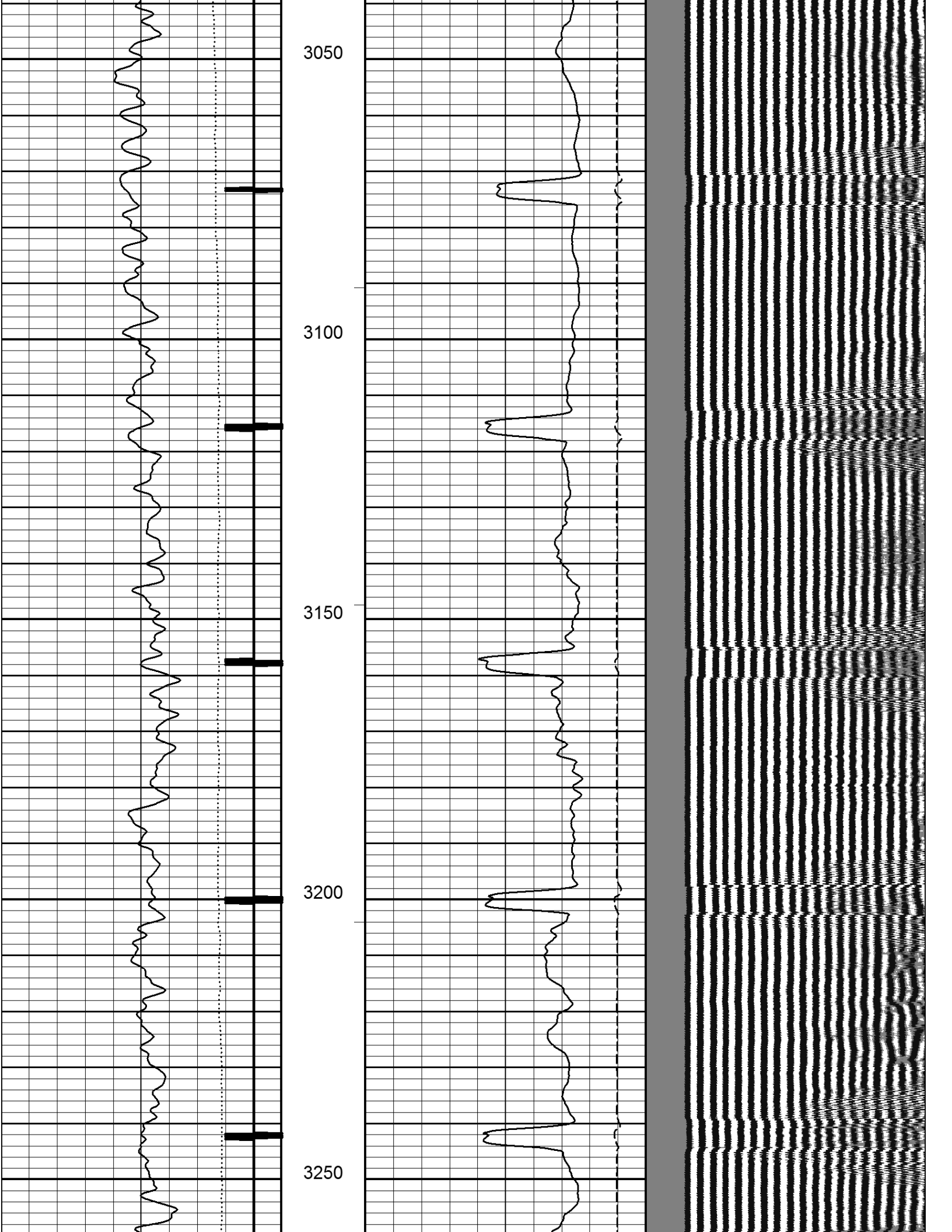


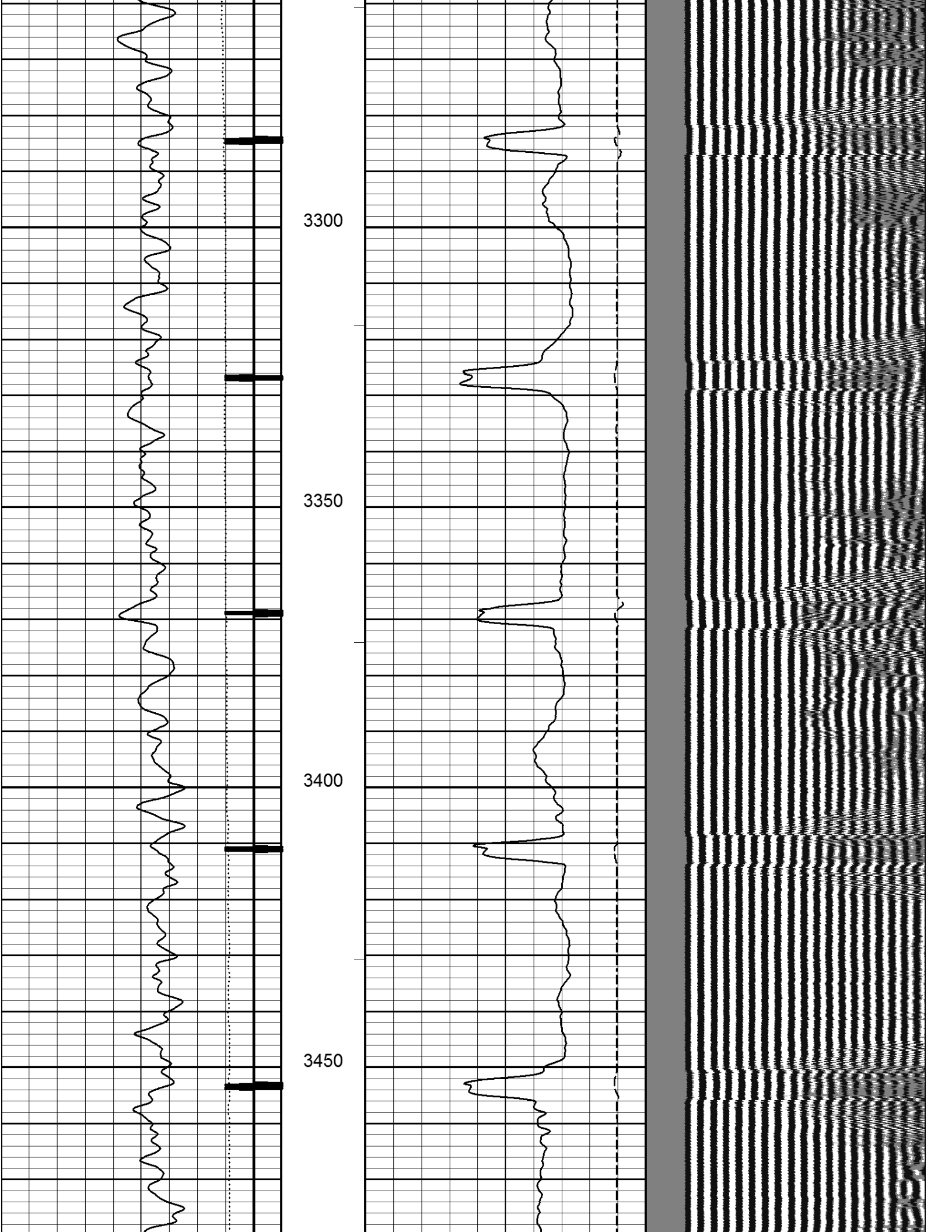


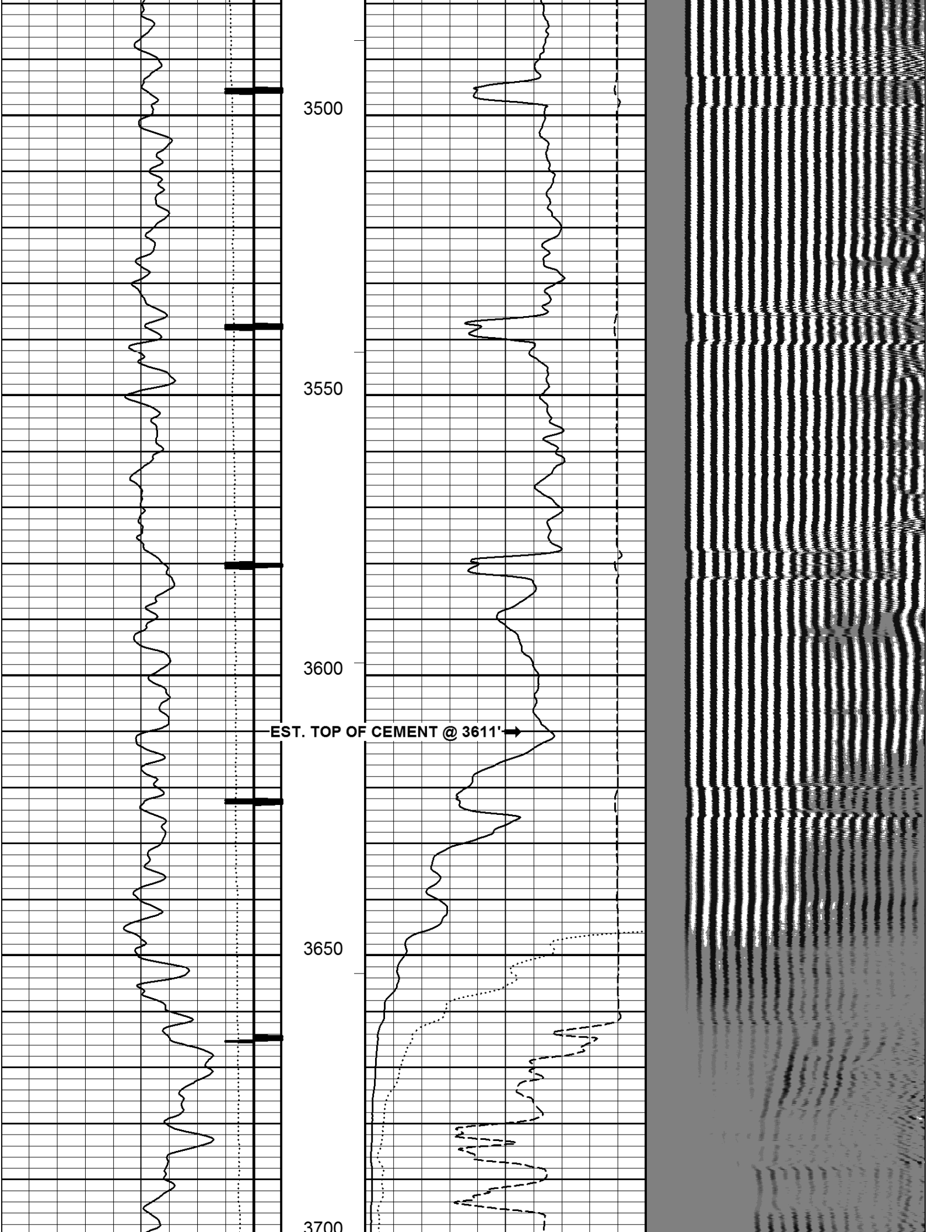


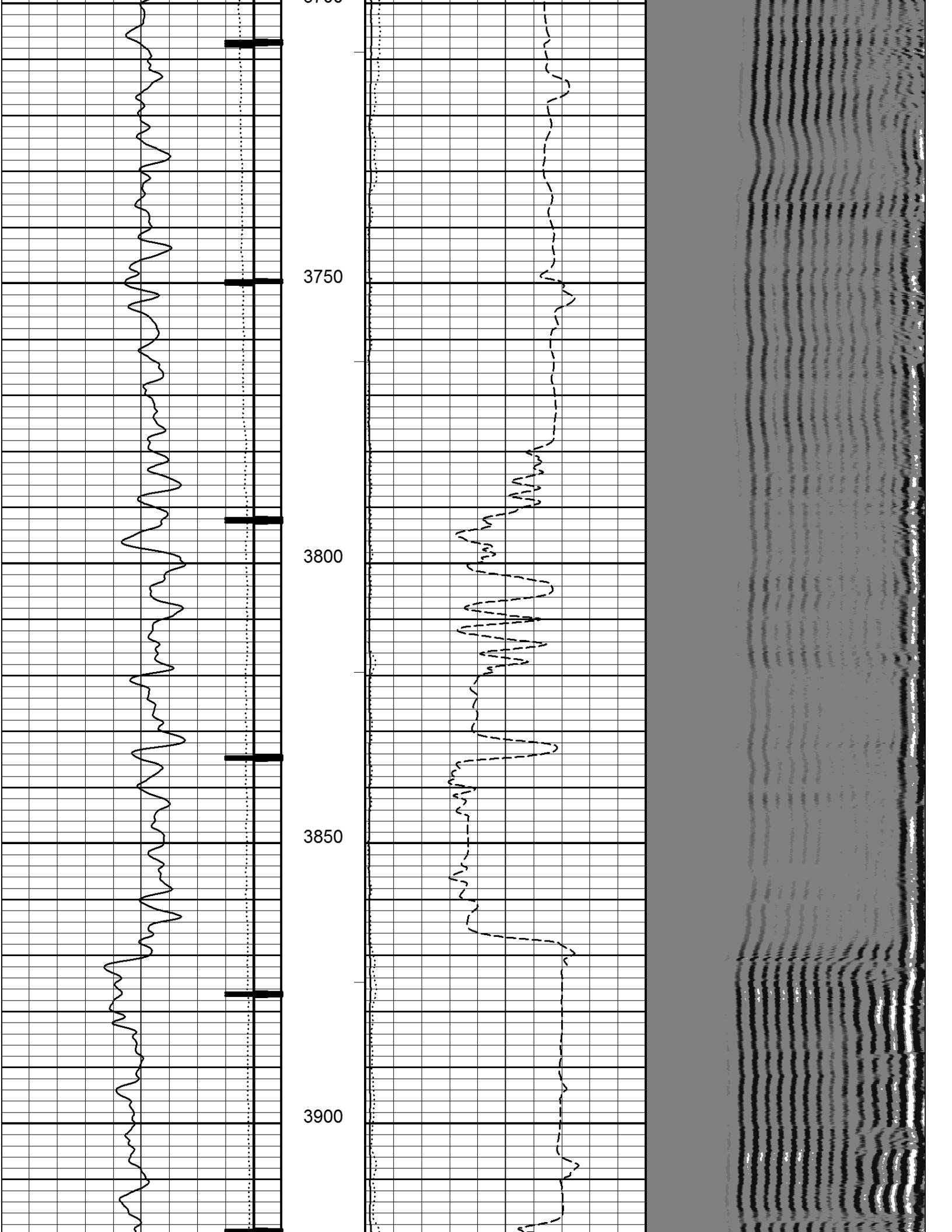


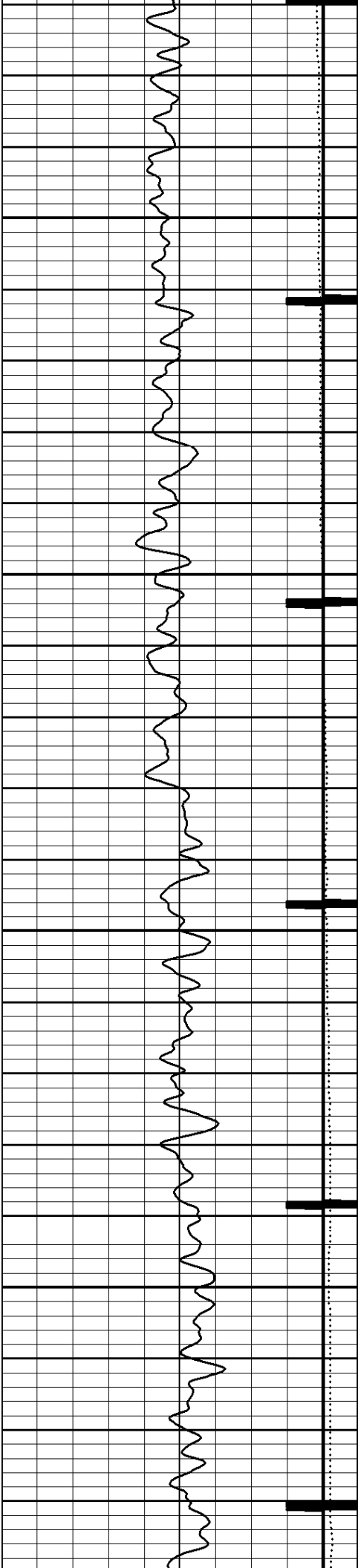










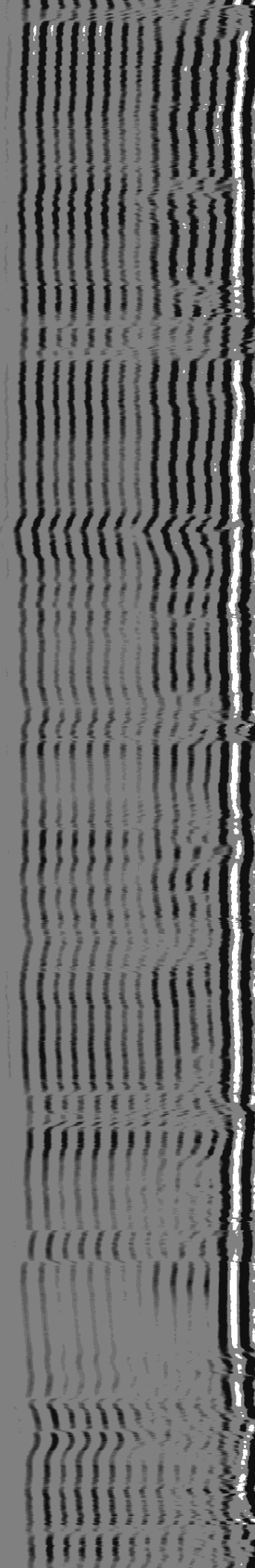
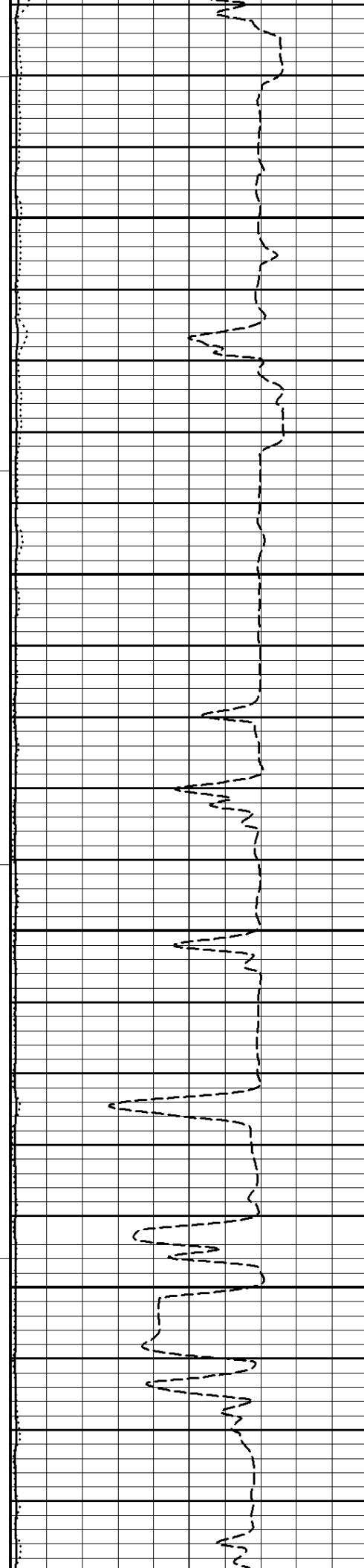


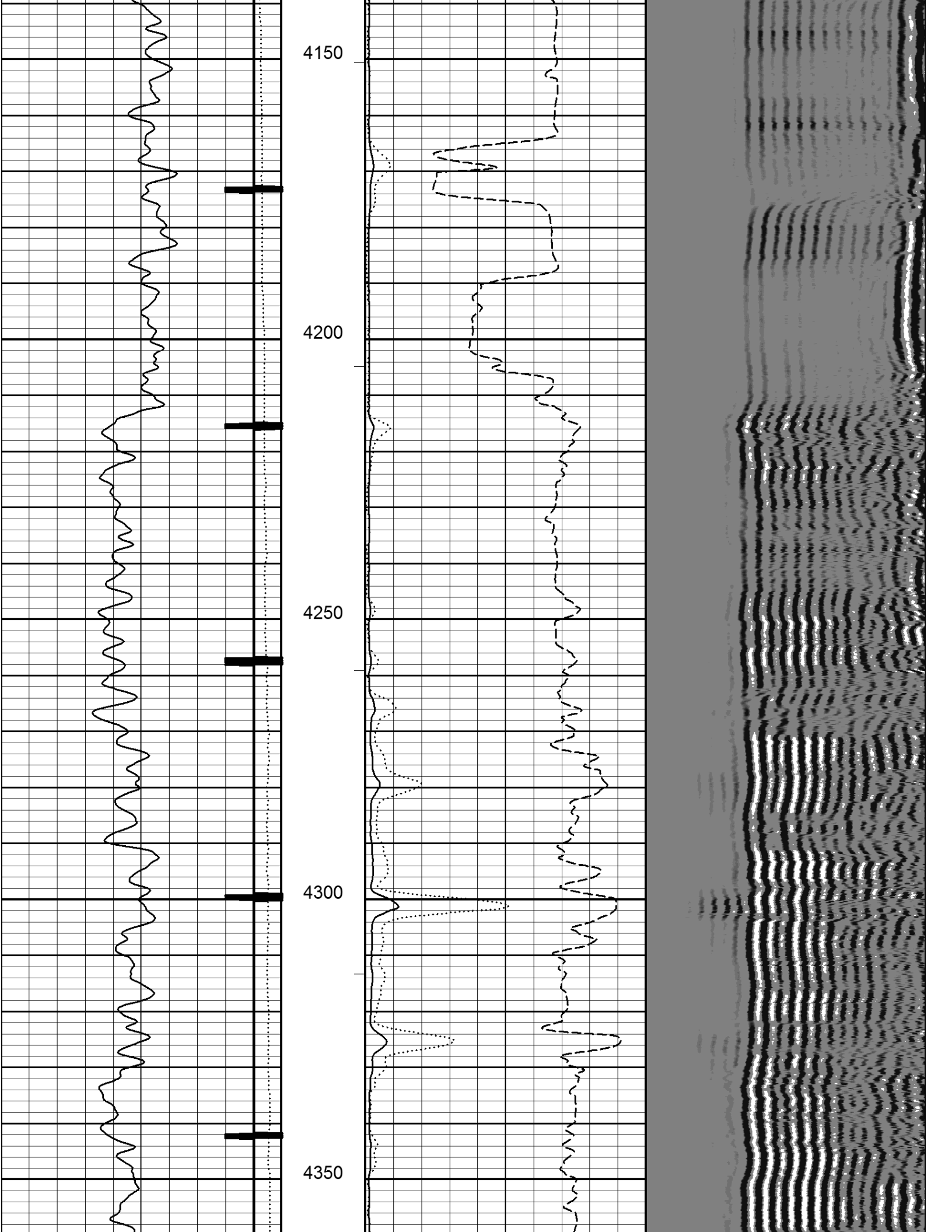
3950

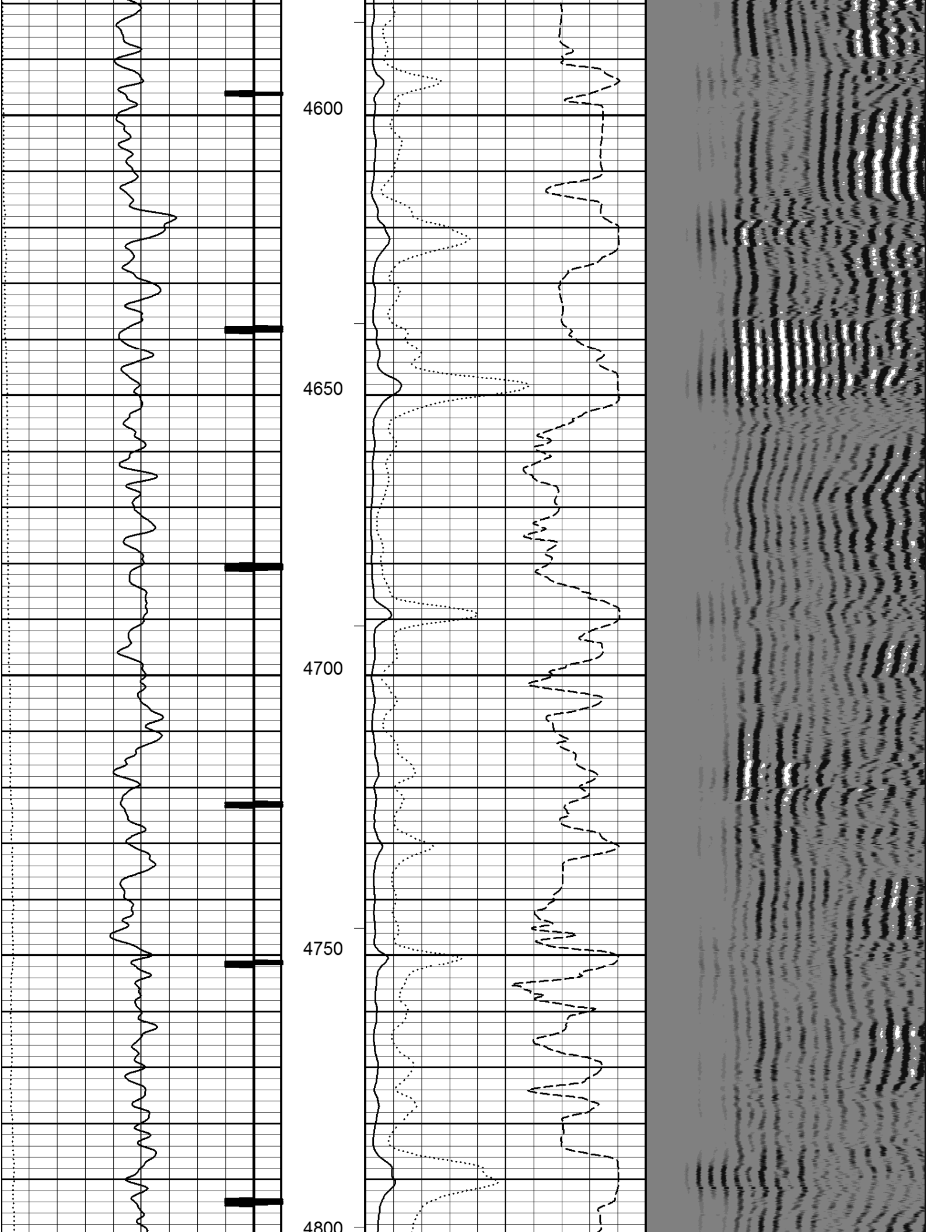
4000

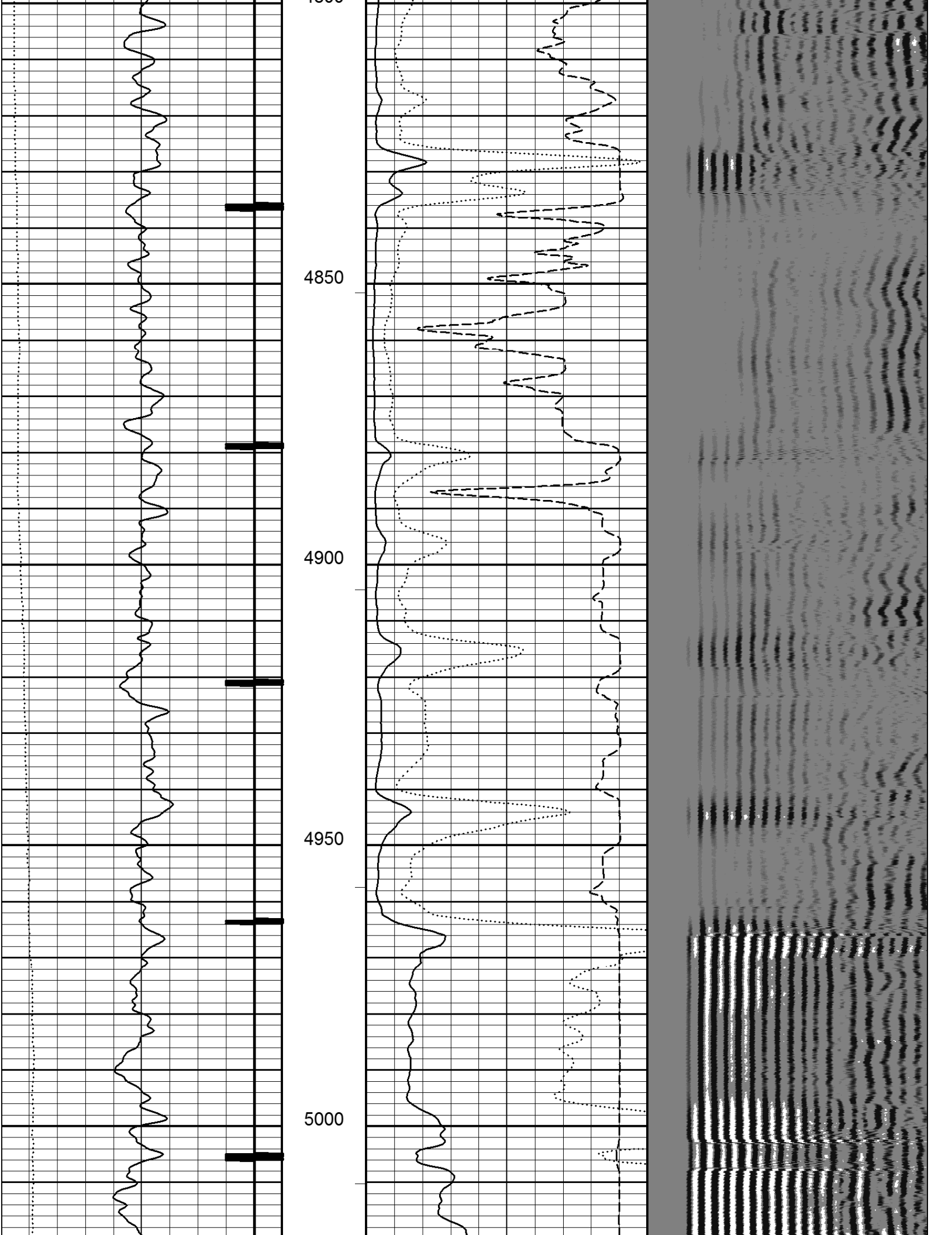
4050

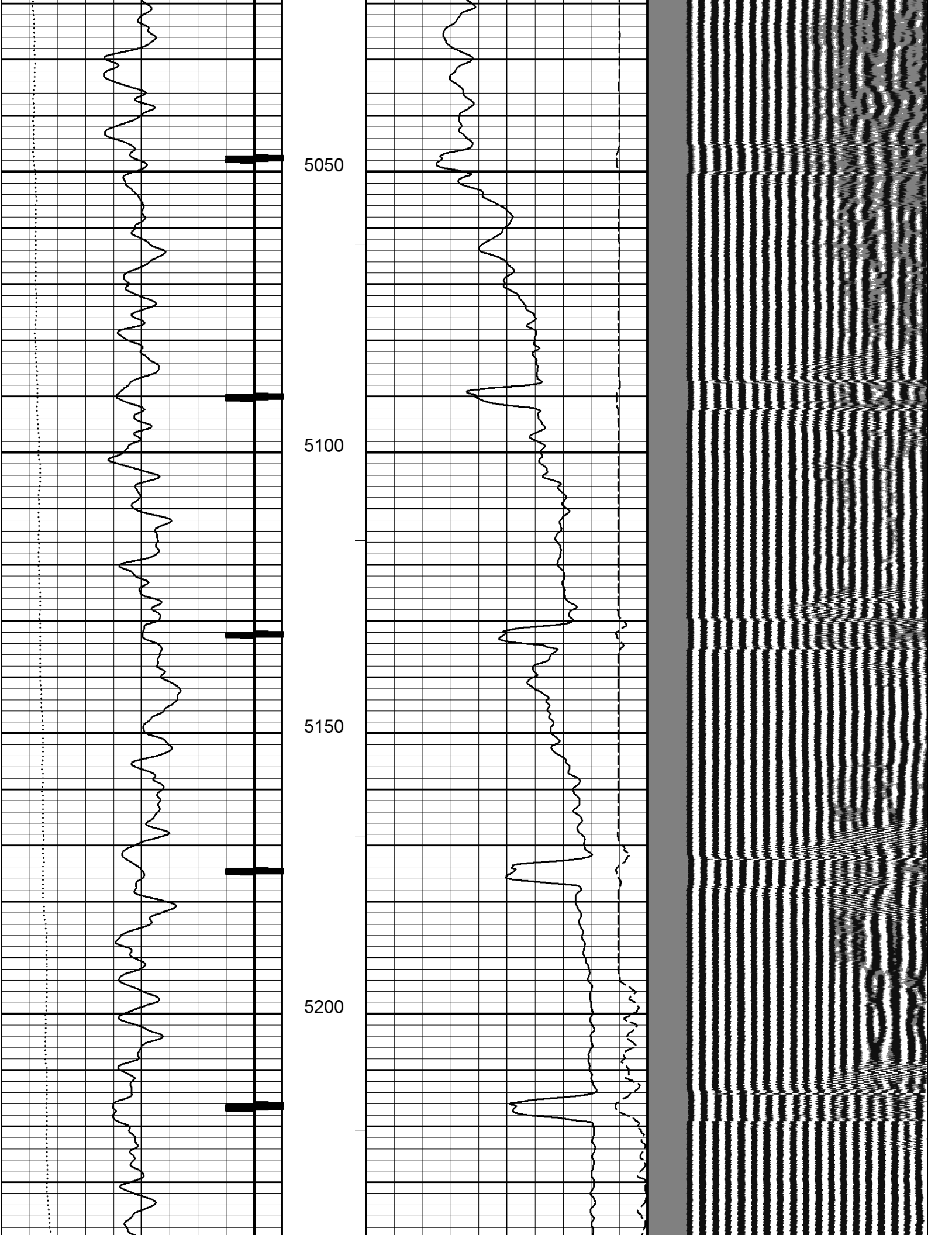
4100

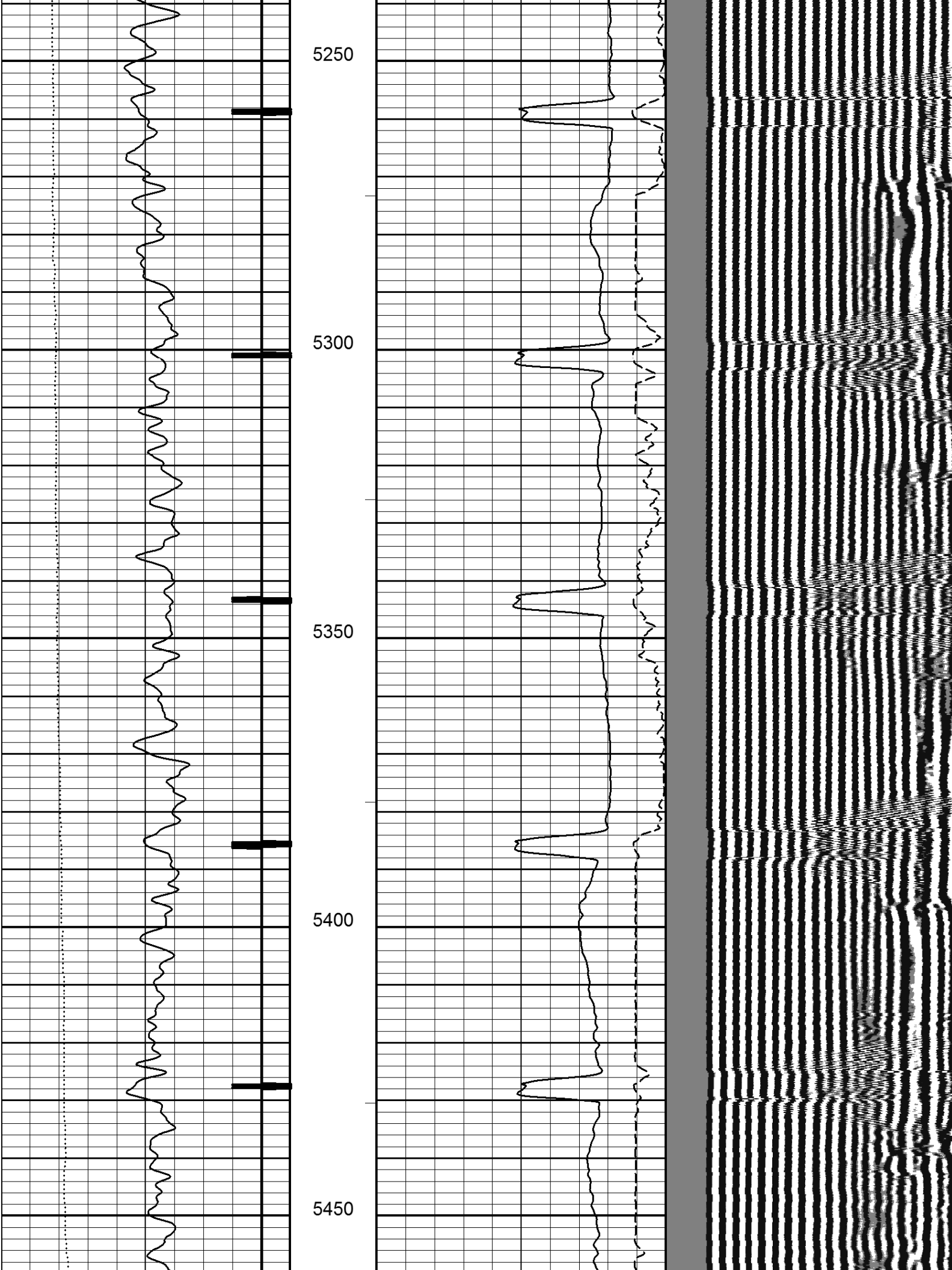


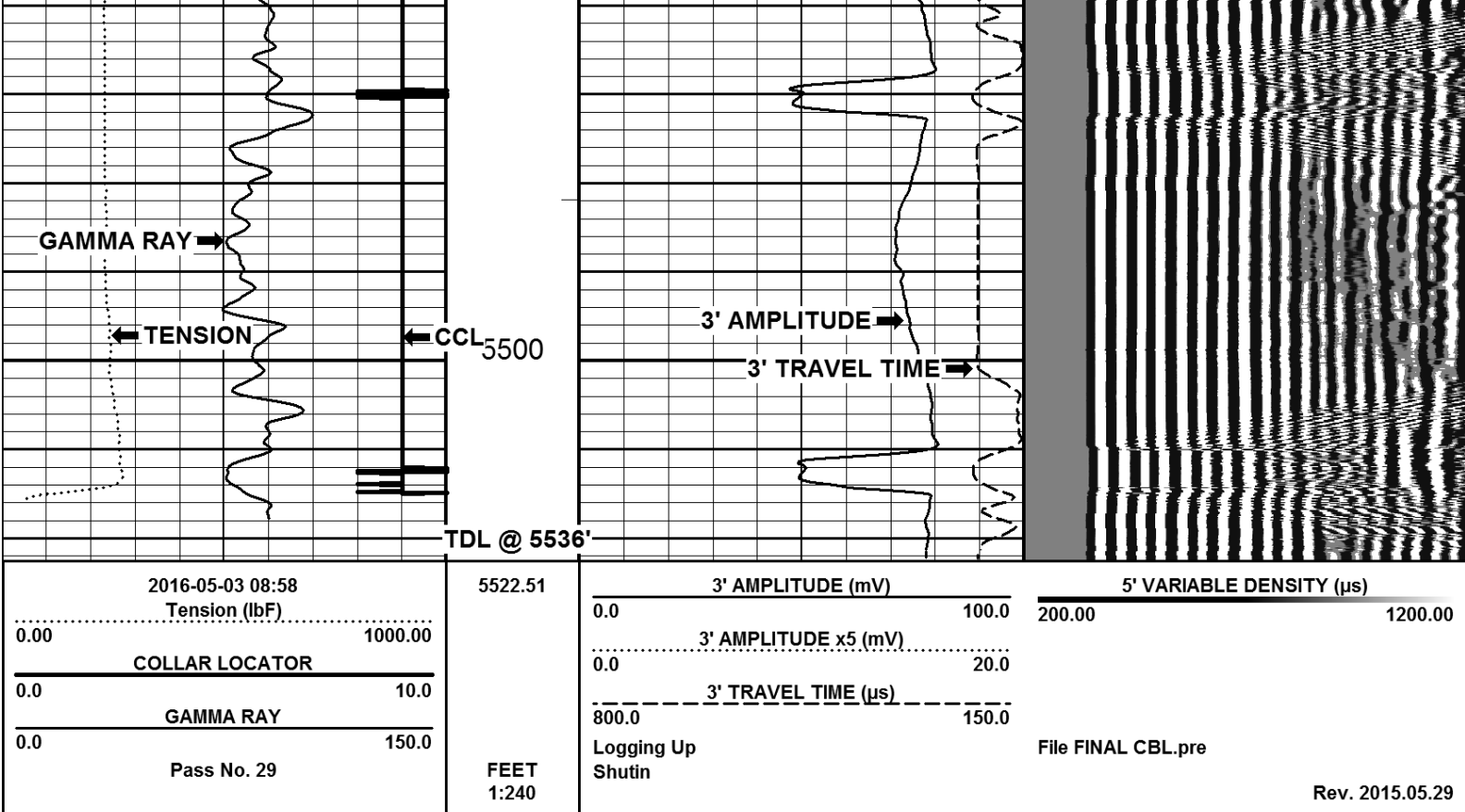












Company NOBLE ENERGY

Well DECHANT STATE 1-36

Field WATTENBERG

County WELD State COLORADO

1/4'S NWNV SEC 36 TWP. 3N RGE. 65W