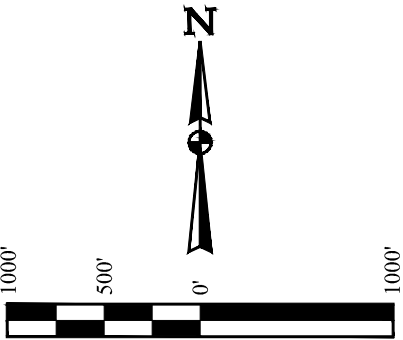
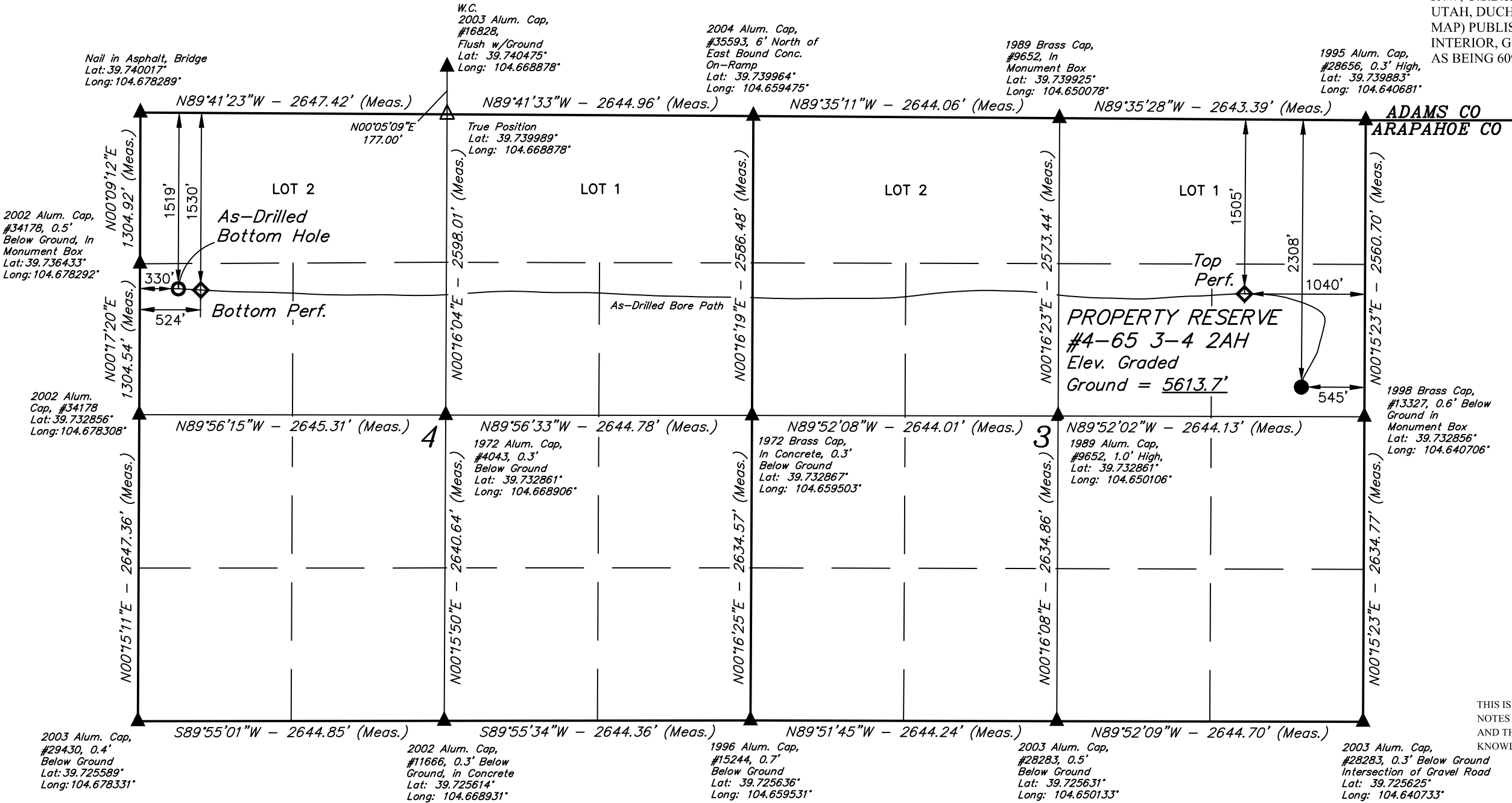


BASIS OF BEARINGS

BASIS OF BEARINGS IS A G.P.S. OBSERVATION

BASIS OF ELEVATION

BENCH MARK (M67) LOCATED IN THE SW 1/4 OF SECTION 9, T5S, R4W, U.S.B.&M., TAKEN FROM THE DUCHESNE SE, QUADRANGLE, UTAH, DUCHESNE COUNTY, 7.5 MINUTE QUAD. (TOPOGRAPHIC MAP) PUBLISHED BY THE UNITED STATES DEPARTMENT OF THE INTERIOR, GEOLOGICAL SURVEY. SAID ELEVATION IS MARKED AS BEING 6097 FEET.



CERTIFICATE

THIS IS TO CERTIFY THAT THE ABOVE PLAT WAS PREPARED FROM FIELD NOTES OF ACTUAL SURVEYS MADE BY ME OR UNDER MY SUPERVISION, AND THAT THE SAME ARE TRUE AND CORRECT TO THE BEST OF MY KNOWLEDGE AND BELIEF.

REGISTERED LAND SURVEYOR  
REGISTRATION NO. 28285  
STATE OF COLORADO 09-09-19

PDOP = 1.6

LEGEND:

- = PROPOSED WELLHEAD.
- ◆ = PRODUCTION INTERVAL.
- = TARGET BOTTOM HOLE.
- ▲ = SECTION CORNERS LOCATED. (NAD 83)
- △ = SECTION CORNERS RE-ESTABLISHED. (Not Set on Ground.) (NAD 83)

NAD 83 (AS-DRILLED LOCATION)	NAD 83 (TOP PERF.)	NAD 83 (BOTTOM PERF.)	NAD 83 (AS-DRILLED BOTTOM HOLE)
LATITUDE = 39°44'00.81" (39.733559)	LATITUDE = 39°44'08.77" (39.735768)	LATITUDE = 39°44'08.93" (39.735813)	LATITUDE = 39°44'09.03" (39.735843)
LONGITUDE = 104°38'33.50" (104.642640)	LONGITUDE = 104°38'39.81" (104.644391)	LONGITUDE = 104°40'35.16" (104.676434)	LONGITUDE = 104°40'37.64" (104.677122)
NAD 27 (AS-DRILLED LOCATION)	NAD 27 (TOP PERF.)	NAD 27 (BOTTOM PERF.)	NAD 27 (AS-DRILLED BOTTOM HOLE)
LATITUDE = 39°44'00.86" (39.733572)	LATITUDE = 39°44'08.81" (39.735781)	LATITUDE = 39°44'08.97" (39.735826)	LATITUDE = 39°44'09.08" (39.735856)
LONGITUDE = 104°38'31.62" (104.642117)	LONGITUDE = 104°38'37.92" (104.643868)	LONGITUDE = 104°40'33.27" (104.675909)	LONGITUDE = 104°40'35.75" (104.676598)
STATE PLANE NAD 83 (CO. CEN.)	STATE PLANE NAD 83 (CO. CEN.)	STATE PLANE NAD 83 (CO. CEN.)	STATE PLANE NAD 83 (CO. CEN.)
N: 1693216.16 E: 3241127.16	N: 1694016.44 E: 3240627.01	N: 1693949.37 E: 3231615.70	N: 1693958.54 E: 3231421.99
STATE PLANE NAD 27 (CO. CEN.)	STATE PLANE NAD 27 (CO. CEN.)	STATE PLANE NAD 27 (CO. CEN.)	STATE PLANE NAD 27 (CO. CEN.)
N: 693208.43 E: 2241280.65	N: 694008.70 E: 2240780.49	N: 693941.49 E: 2231769.26	N: 693950.66 E: 2231575.54



UELS, LLC  
Corporate Office \* 85 South 200 East  
Vernal, UT 84078 \* (435) 789-1017

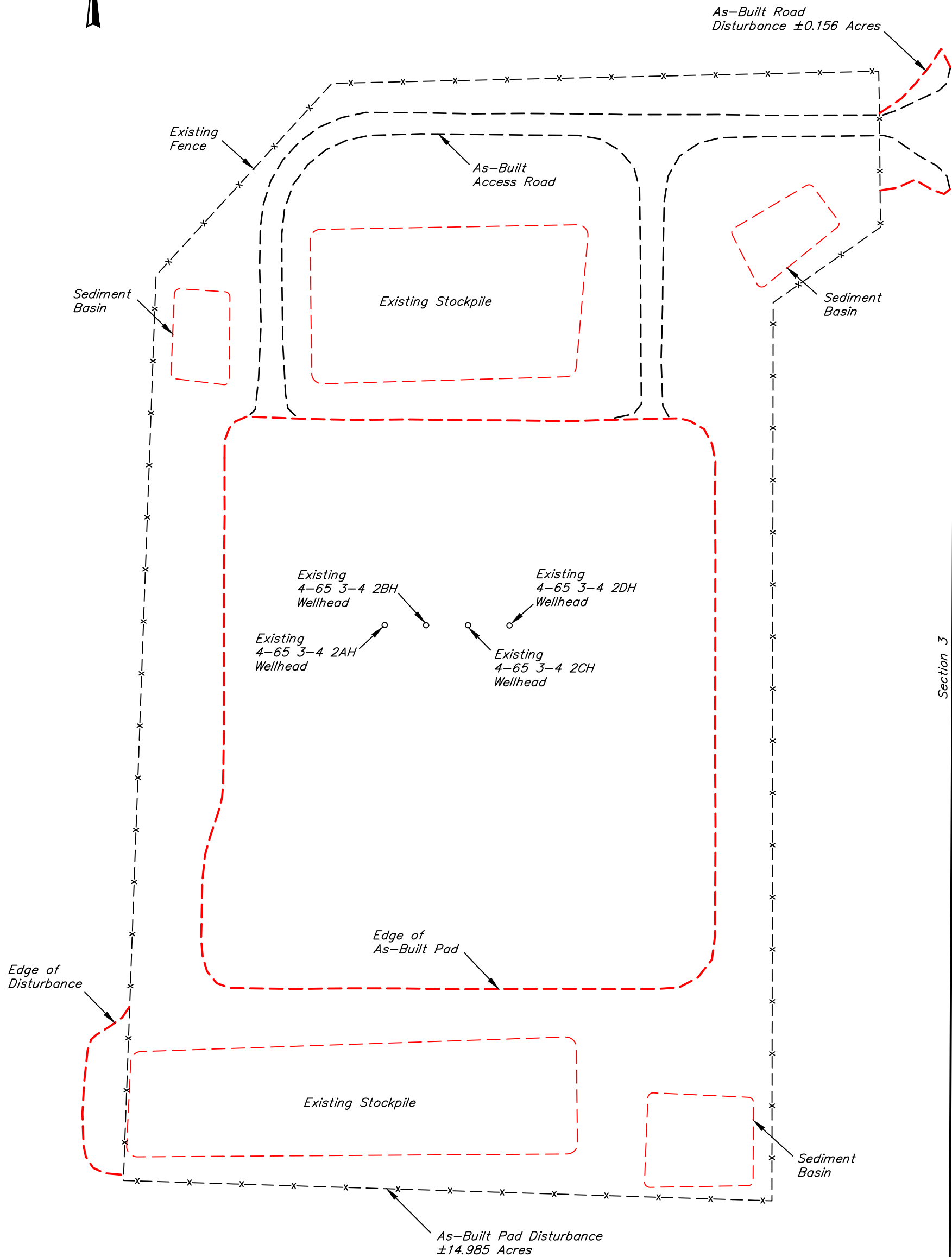
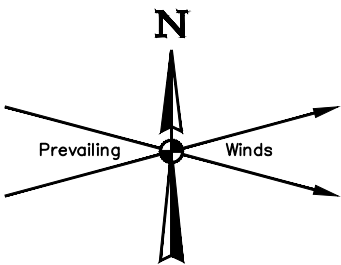
SURVEYED BY	C.M., O.R.	12-14-18	SCALE
DRAWN BY	C.IVIE	09-09-19	1" = 1000'

WELL LOCATION PLAT

ConocoPhillips Company  
PROPERTY RESERVE 4-65 3-4 2AH, 2BH, 2CH, & 2DH  
SE 1/4 NE 1/4, SECTION 3, T4S, R65W, 6th P.M.  
ARAPAHOE COUNTY, COLORADO  
DATE: 12-19-18 J.U.  
REV: 1 02-15-19 M.D. (LAT & LONG CHANGE)

Well Name	Footages	Lat: (NAD 27)	Long: (NAD 27)	Lat: (NAD 83)	Long: (NAD 83)	Elevation	Section	Township	Range	Qtr./Qtr.	PDOP	DATE COMPLETED	SURVEYED BY
PROPERTY RESERVE 4-65 3-4 2AH	2308' FNL 545' FEL	39°44'00.86" (39.733572°)	104°38'31.62" (104.642117°)	39°44'00.81" (39.733559°)	104°38'33.50" (104.642640°)	5613.7'	3	T4S	R65W	SE/NE	1.6	12/14/2018	CHAD MEIERS
PROPERTY RESERVE 4-65 3-4 2BH	2308' FNL 505' FEL	39°44'00.86" (39.733571°)	104°38'31.11" (104.641975°)	39°44'00.81" (39.733558°)	104°38'33.00" (104.642499°)	5613.8'	3	T4S	R65W	SE/NE	1.4	12/14/2018	CHAD MEIERS
PROPERTY RESERVE 4-65 3-4 2CH	2308' FNL 465' FEL	39°44'00.86" (39.733571°)	104°38'30.60" (104.641832°)	39°44'00.81" (39.733558°)	104°38'32.48" (104.642356°)	5613.8'	3	T4S	R65W	SE/NE	1.4	12/14/2018	CHAD MEIERS
PROPERTY RESERVE 4-65 3-4 2DH	2308' FNL 425' FEL	39°44'00.86" (39.733571°)	104°38'30.09" (104.641691°)	39°44'00.81" (39.733558°)	104°38'31.97" (104.642215°)	5613.7'	3	T4S	R65W	SE/NE	1.4	12/14/2018	CHAD MEIERS





APPROXIMATE SURFACE DISTURBANCE AREAS	
	ACRES
AS-BUILT WELL SITE DISTURBANCE	±14.985
AS-BUILT ROAD DISTURBANCE	±.156
TOTAL AS-BUILT SURFACE USE AREA	±15.141

REV: 1 02-15-19 M.D. (RANGE CHANGE)

NOTES:

•

ConocoPhillips Company

PROPERTY RESERVE 4-65 3-4 2AH, 2BH, 2CH, & 2DH  
NW 1/4 SW 1/4, SECTION 3, T4S, R65W, 6th P.M.  
ARAPAHOE COUNTY, COLORADO

SURVEYED BY	CHAD MEIERS.	12-14-18	SCALE
DRAWN BY	J.U.	12-19-18	1" = 100'
AS-BUILT			



UELS, LLC  
Corporate Office \* 85 South 200 East  
Vernal, UT 84078 \* (435) 789-1017