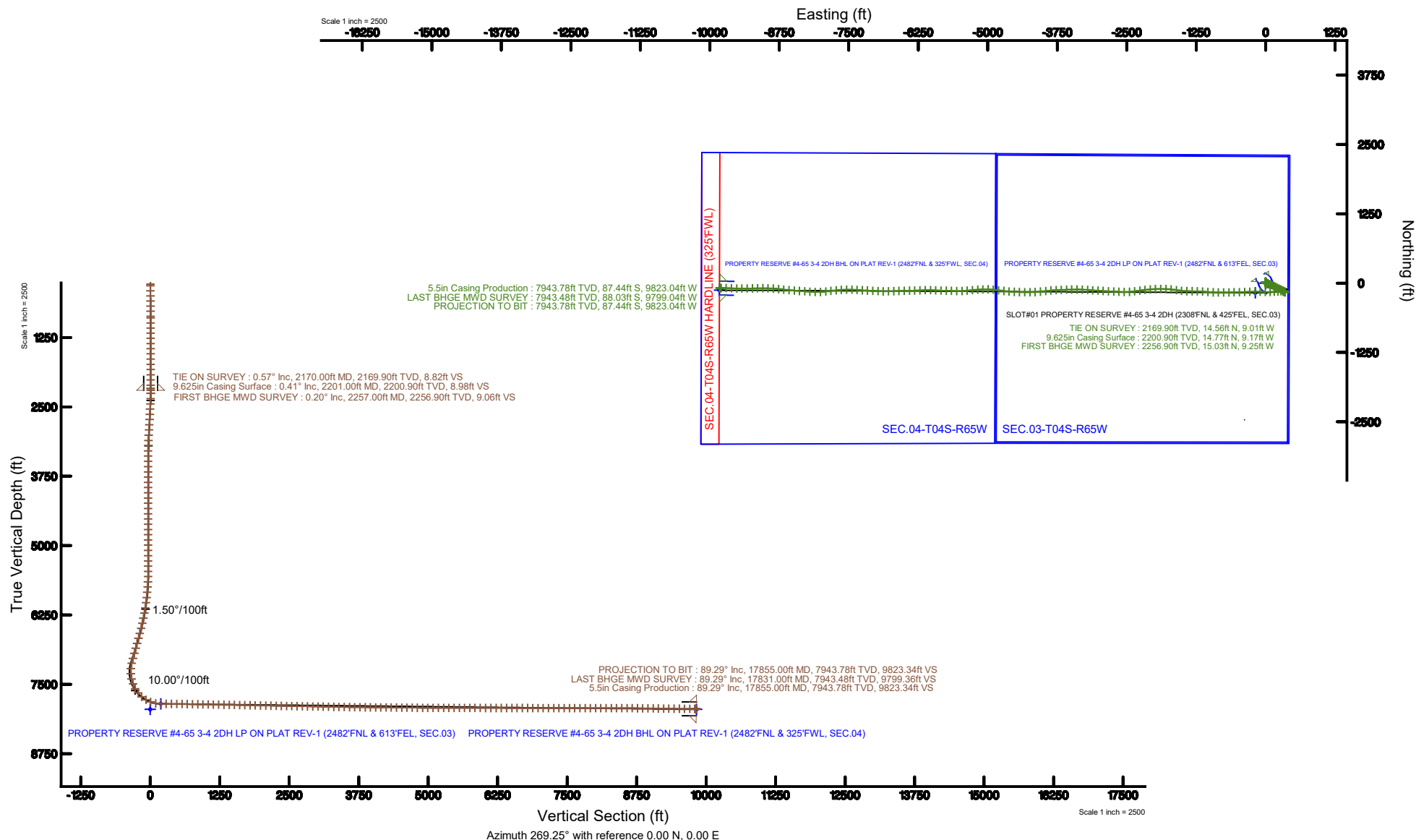


Location:	COLORADO	Slot:	SLOT#01 PROPERTY RESERVE #4-65 3-4 2DH (2308'FNL & 425'FEL, SEC.03)
Field:	ARAPAHOE COUNTY (NAD83/TN)	Well:	PROPERTY RESERVE #4-65 3-4 2DH
Facility:	SEC.03-T04S-R65W	Wellbore:	PROPERTY RESERVE #4-65 3-4 2DH PWB

Location:	COLORADO	Slot:	SLOT#01 PROPERTY RESERVE #4-65 3-4 2DH (2308'FNL & 425'FEL, SEC.03)
Field:	ARAPAHOE COUNTY (NAD83/TN)	Well:	PROPERTY RESERVE #4-65 3-4 2DH
Facility:	SEC.03-T04S-R65W	Wellbore:	PROPERTY RESERVE #4-65 3-4 2DH PWB



Plot reference wellpath is PROPERTY RESERVE #4-65 3-4 2DH (REV-E-0) PWP	Grid System: NAD83 / Lambert Colorado SP, Central Zone (502), US feet
True vertical depths are referenced to NABORS B16 (25KB) (RKB)	North Reference: True north
Measured depths are referenced to NABORS B16 (25KB) (RKB)	Scale: True distance
NABORS B16 (25KB) (RKB) to Mean Sea Level: 9637 feet	Depths are in feet
Mean Sea Level to Mud line (At Slot: SLOT#01 PROPERTY RESERVE #4-65 3-4 2DH (2308FNL & 425FEL, SEC.03)): 0 feet	Created by: kornel on 1999-02-20
Coordinates are in feet referenced to Slot	Database: WA DENVER





Actual Wellpath Report

PROPERTY RESERVE #4-65 3-4 2DH AWP
Page n of nn



REFERENCE WELLPATH IDENTIFICATION			
Operator	BURLINGTON RESOURCES	Slot	SLOT#01 PROPERTY RESERVE #4-65 3-4 2DH (2308'FNL & 425'FEL, SEC.03)
Area	COLORADO	Well	PROPERTY RESERVE #4-65 3-4 2DH
Field	ARAPAHOE COUNTY (NAD83/TN)	Wellbore	PROPERTY RESERVE #4-65 3-4 2DH AWB
Facility	SEC.03-T04S-R65W		

REPORT SETUP INFORMATION			
Projection System	NAD83 / Lambert Colorado SP, Central Zone (502), US feet	Software System	WellArchitect® 5.1
North Reference	True	User	Komeraf
Scale	0.999997	Report Generated	2/20/2019 at 2:29:39 PM
Convergence at slot	0.54° East	Database/Source file	WA DENVER/PROPERTY_RESERVE_#4-65_3-4_2DH_AWP.xml

WELLPATH LOCATION						
	Local coordinates		Grid coordinates		Geographic coordinates	
	North[ft]	East[ft]	Easting[US ft]	Northing[US ft]	Latitude	Longitude
Slot Location	0.00	0.00	3241247.02	1693217.22	39°44'00.810"N	104°38'31.970"W
Facility Reference Pt			3241247.02	1693217.22	39°44'00.810"N	104°38'31.970"W
Field Reference Pt			3256721.09	1679994.75	39°41'48.650"N	104°35'15.610"W

WELLPATH DATUM			
Calculation method	Minimum curvature	NABORS B16 (25'KB) (RKB) to Facility Vertical Datum	5637.00ft
Horizontal Reference Pt	Slot	NABORS B16 (25'KB) (RKB) to Mean Sea Level	5637.00ft
Vertical Reference Pt	NABORS B16 (25'KB) (RKB)	NABORS B16 (25'KB) (RKB) to Mud Line at Slot (SLOT#01 PROPERTY RESERVE #4-65 3-4 2DH (2308'FNL & 425'FEL, SEC.03))	5637.00ft
MD Reference Pt	NABORS B16 (25'KB) (RKB)	Section Origin	N 0.00, E 0.00 ft
Field Vertical Reference	Mean Sea Level	Section Azimuth	269.49°

BURLINGTON
RESOURCES

Actual Wellpath Report
PROPERTY RESERVE #4-65 3-4 2DH AWP
Page n of nn



REFERENCE WELLPATH IDENTIFICATION			
Operator	BURLINGTON RESOURCES	Slot	SLOT#01 PROPERTY RESERVE #4-65 3-4 2DH (2308'FNL & 425'FEL, SEC.03)
Area	COLORADO	Well	PROPERTY RESERVE #4-65 3-4 2DH
Field	ARAPAHOE COUNTY (NAD83/TN)	Wellbore	PROPERTY RESERVE #4-65 3-4 2DH AWP
Facility	SEC.03-T04S-R65W		

WELLPATH DATA (168 stations)

MD [ft]	Inclination [°]	Azimuth [°]	TVD [ft]	Vert Sect [ft]	North [ft]	East [ft]	Grid East [US ft]	Grid North [US ft]	Latitude	Longitude	DLS [°/100ft]	Comments
2170.00	0.570	319.460	2169.90	8.88	14.56	-9.01	3241237.86	1693231.69	39°44'00.954"N	104°38'32.085"W	0.08	TIE ON SURVEY
2257.00	0.200	16.150	2256.90	9.12	15.03	-9.25	3241237.62	1693232.17	39°44'00.959"N	104°38'32.088"W	0.56	FIRST BHGE MWD SURVEY
2351.00	1.920	94.870	2350.88	7.50	15.06	-7.64	3241239.24	1693232.21	39°44'00.959"N	104°38'32.068"W	2.01	
2446.00	3.910	105.940	2445.76	2.81	14.03	-2.94	3241243.95	1693231.23	39°44'00.949"N	104°38'32.008"W	2.17	
2540.00	3.650	128.010	2539.56	-2.60	11.31	2.50	3241249.41	1693228.55	39°44'00.922"N	104°38'31.938"W	1.56	
2634.00	3.660	139.970	2633.37	-6.85	7.17	6.79	3241253.74	1693224.46	39°44'00.881"N	104°38'31.883"W	0.81	
2729.00	3.580	124.620	2728.18	-11.21	3.16	11.18	3241258.17	1693220.49	39°44'00.841"N	104°38'31.827"W	1.02	
2823.00	3.650	111.730	2822.00	-16.38	0.39	16.38	3241263.39	1693217.76	39°44'00.814"N	104°38'31.760"W	0.87	
2917.00	3.600	102.270	2915.81	-22.03	-1.35	22.04	3241269.07	1693216.08	39°44'00.797"N	104°38'31.688"W	0.64	
3012.00	3.530	115.210	3010.63	-27.57	-3.23	27.60	3241274.64	1693214.26	39°44'00.778"N	104°38'31.617"W	0.85	
3106.00	3.540	122.280	3104.45	-32.62	-6.01	32.67	3241279.74	1693211.52	39°44'00.751"N	104°38'31.552"W	0.46	
3201.00	2.420	118.310	3199.32	-36.84	-8.53	36.92	3241284.01	1693209.04	39°44'00.726"N	104°38'31.497"W	1.20	
3295.00	0.110	252.040	3293.29	-38.49	-9.50	38.58	3241285.68	1693208.09	39°44'00.716"N	104°38'31.476"W	2.66	
3389.00	0.120	224.340	3387.29	-38.34	-9.60	38.42	3241285.53	1693207.99	39°44'00.715"N	104°38'31.478"W	0.06	
3484.00	0.030	280.600	3482.29	-38.24	-9.66	38.33	3241285.43	1693207.92	39°44'00.715"N	104°38'31.479"W	0.11	
3578.00	0.070	167.770	3576.29	-38.23	-9.71	38.32	3241285.42	1693207.87	39°44'00.714"N	104°38'31.480"W	0.09	
3673.00	0.090	293.210	3671.29	-38.17	-9.74	38.26	3241285.37	1693207.84	39°44'00.714"N	104°38'31.480"W	0.15	
3767.00	0.070	217.310	3765.29	-38.07	-9.76	38.16	3241285.26	1693207.83	39°44'00.714"N	104°38'31.482"W	0.11	
3861.00	0.030	254.070	3859.29	-38.01	-9.81	38.10	3241285.21	1693207.77	39°44'00.713"N	104°38'31.482"W	0.05	
3956.00	0.500	217.140	3954.29	-37.73	-10.15	37.83	3241284.93	1693207.43	39°44'00.710"N	104°38'31.486"W	0.50	
4050.00	0.030	185.960	4048.29	-37.48	-10.50	37.58	3241284.69	1693207.08	39°44'00.706"N	104°38'31.489"W	0.50	
4145.00	0.040	76.060	4143.29	-37.51	-10.52	37.61	3241284.72	1693207.06	39°44'00.706"N	104°38'31.489"W	0.06	
4239.00	0.160	231.080	4237.29	-37.44	-10.59	37.53	3241284.65	1693206.99	39°44'00.705"N	104°38'31.490"W	0.21	
4334.00	0.060	227.830	4332.29	-37.30	-10.71	37.39	3241284.51	1693206.87	39°44'00.704"N	104°38'31.491"W	0.11	
4428.00	0.150	153.220	4426.29	-37.32	-10.85	37.41	3241284.53	1693206.73	39°44'00.703"N	104°38'31.491"W	0.16	
4522.00	0.520	170.480	4520.29	-37.44	-11.38	37.54	3241284.66	1693206.20	39°44'00.698"N	104°38'31.489"W	0.40	
4617.00	0.100	222.620	4615.28	-37.45	-11.87	37.55	3241284.68	1693205.71	39°44'00.693"N	104°38'31.489"W	0.49	
4711.00	0.030	181.540	4709.28	-37.39	-11.95	37.50	3241284.62	1693205.63	39°44'00.692"N	104°38'31.490"W	0.08	
4806.00	0.030	152.990	4804.28	-37.40	-12.00	37.51	3241284.64	1693205.58	39°44'00.691"N	104°38'31.490"W	0.02	
4900.00	0.090	20.090	4898.28	-37.44	-11.95	37.55	3241284.67	1693205.63	39°44'00.692"N	104°38'31.489"W	0.12	
4994.00	0.030	294.440	4992.28	-37.44	-11.87	37.55	3241284.67	1693205.71	39°44'00.693"N	104°38'31.489"W	0.10	
5089.00	0.040	80.700	5087.28	-37.45	-11.86	37.56	3241284.68	1693205.72	39°44'00.693"N	104°38'31.489"W	0.07	
5183.00	0.070	196.220	5181.28	-37.47	-11.91	37.58	3241284.70	1693205.67	39°44'00.692"N	104°38'31.489"W	0.10	
5278.00	0.070	243.790	5276.28	-37.40	-11.99	37.51	3241284.63	1693205.59	39°44'00.692"N	104°38'31.490"W	0.06	
5372.00	0.040	201.920	5370.28	-37.33	-12.04	37.44	3241284.57	1693205.53	39°44'00.691"N	104°38'31.491"W	0.05	
5466.00	0.070	215.910	5464.28	-37.29	-12.12	37.40	3241284.52	1693205.46	39°44'00.690"N	104°38'31.491"W	0.03	
5561.00	1.050	123.610	5559.28	-37.97	-12.65	38.09	3241285.22	1693204.93	39°44'00.685"N	104°38'31.482"W	1.11	
5655.00	3.220	121.390	5653.21	-40.93	-14.50	41.06	3241288.21	1693203.11	39°44'00.667"N	104°38'31.444"W	2.31	
5749.00	4.870	112.730	5746.97	-46.84	-17.42	46.99	3241294.17	1693200.25	39°44'00.638"N	104°38'31.368"W	1.87	
5844.00	5.480	101.280	5841.59	-54.98	-19.86	55.16	3241302.36	1693197.88	39°44'00.614"N	104°38'31.264"W	1.26	
5938.00	6.120	98.630	5935.10	-64.32	-21.49	64.52	3241311.73	1693196.34	39°44'00.598"N	104°38'31.144"W	0.74	
6032.00	6.910	102.170	6028.50	-74.79	-23.44	75.00	3241322.23	1693194.50	39°44'00.578"N	104°38'31.010"W	0.94	
6127.00	9.480	104.930	6122.52	-87.91	-26.66	88.15	3241335.41	1693191.40	39°44'00.547"N	104°38'30.842"W	2.74	
6222.00	12.050	112.990	6215.84	-104.55	-32.55	104.84	3241352.16	1693185.67	39°44'00.488"N	104°38'30.628"W	3.13	
6316.00	14.030	117.620	6307.42	-123.59	-41.66	123.97	3241371.37	1693176.73	39°44'00.398"N	104°38'30.383"W	2.38	



Actual Wellpath Report

PROPERTY RESERVE #4-65 3-4 2DH AWP

Page n of nn



REFERENCE WELLPATH IDENTIFICATION

Operator	BURLINGTON RESOURCES	Slot	SLOT#01 PROPERTY RESERVE #4-65 3-4 2DH (2308'FNL & 425'FEL, SEC.03)
Area	COLORADO	Well	PROPERTY RESERVE #4-65 3-4 2DH
Field	ARAPAHOE COUNTY (NAD83/TN)	Wellbore	PROPERTY RESERVE #4-65 3-4 2DH AWP
Facility	SEC.03-T04S-R65W		

WELLPATH DATA (168 stations)

MD [ft]	Inclination [°]	Azimuth [°]	TVD [ft]	Vert Sect [ft]	North [ft]	East [ft]	Grid East [US ft]	Grid North [US ft]	Latitude	Longitude	DLS [°/100ft]	Comments
6410.00	14.550	119.430	6398.51	-143.87	-52.75	144.35	3241391.86	1693165.84	39°44'00.289"N	104°38'30.122"W	0.73	
6504.00	14.760	117.670	6489.45	-164.66	-64.11	165.24	3241412.85	1693154.68	39°44'00.176"N	104°38'29.855"W	0.52	
6599.00	15.800	114.590	6581.09	-187.04	-75.11	187.72	3241435.43	1693143.89	39°44'00.068"N	104°38'29.567"W	1.39	
6693.00	17.280	114.020	6671.20	-211.33	-86.12	212.11	3241459.93	1693133.11	39°43'59.959"N	104°38'29.255"W	1.58	
6788.00	17.250	116.030	6761.92	-236.77	-98.05	237.65	3241485.58	1693121.43	39°43'59.841"N	104°38'28.928"W	0.63	
6882.00	17.240	118.930	6851.70	-261.37	-110.90	262.37	3241510.42	1693108.81	39°43'59.714"N	104°38'28.612"W	0.91	
6977.00	17.290	117.810	6942.42	-286.06	-124.30	287.18	3241535.35	1693095.64	39°43'59.582"N	104°38'28.294"W	0.35	
7071.00	17.220	113.780	7032.19	-311.04	-136.43	312.26	3241560.55	1693083.75	39°43'59.462"N	104°38'27.973"W	1.27	
7165.00	15.610	119.380	7122.36	-334.69	-148.24	336.02	3241584.42	1693072.16	39°43'59.345"N	104°38'27.669"W	2.40	
7260.00	9.040	158.900	7215.27	-348.43	-161.51	349.88	3241598.41	1693059.02	39°43'59.214"N	104°38'27.492"W	10.88	
7354.00	3.020	275.270	7308.90	-348.57	-168.19	350.08	3241598.66	1693052.34	39°43'59.148"N	104°38'27.489"W	11.41	
7448.00	12.390	283.220	7401.95	-336.28	-165.65	337.77	3241586.33	1693054.77	39°43'59.173"N	104°38'27.647"W	10.01	
7543.00	21.180	290.270	7492.82	-310.28	-157.36	311.69	3241560.18	1693062.81	39°43'59.255"N	104°38'27.980"W	9.48	
7637.00	29.340	275.820	7577.84	-271.41	-149.12	272.75	3241521.16	1693070.69	39°43'59.336"N	104°38'28.479"W	10.82	
7731.00	38.670	263.640	7655.77	-219.13	-150.04	220.48	3241468.90	1693069.27	39°43'59.327"N	104°38'29.148"W	12.25	
7826.00	49.310	266.030	7724.02	-153.46	-155.84	154.85	3241403.33	1693062.85	39°43'59.270"N	104°38'29.988"W	11.33	
7921.00	60.440	269.240	7778.61	-75.94	-158.89	77.35	3241325.86	1693059.07	39°43'59.240"N	104°38'30.980"W	12.03	
8014.00	68.400	271.370	7818.73	7.87	-158.39	-6.46	3241242.06	1693058.78	39°43'59.245"N	104°38'32.053"W	8.80	
8109.00	81.220	270.400	7843.57	99.33	-157.01	-97.93	3241150.57	1693059.30	39°43'59.258"N	104°38'33.224"W	13.53	
8203.00	89.350	270.620	7851.29	192.92	-156.17	-191.53	3241056.97	1693059.25	39°43'59.267"N	104°38'34.422"W	8.65	
8297.00	89.660	268.990	7852.11	286.91	-156.49	-285.53	3240962.98	1693058.05	39°43'59.263"N	104°38'35.625"W	1.77	
8392.00	89.780	267.710	7852.57	381.89	-159.23	-380.48	3240868.05	1693054.41	39°43'59.236"N	104°38'36.840"W	1.35	
8486.00	88.580	267.780	7853.92	475.83	-162.92	-474.40	3240774.18	1693049.83	39°43'59.200"N	104°38'38.042"W	1.28	
8581.00	89.570	268.790	7855.45	570.79	-165.77	-569.34	3240679.27	1693046.09	39°43'59.172"N	104°38'39.258"W	1.49	
8675.00	88.800	269.570	7856.79	664.78	-167.11	-663.32	3240585.30	1693043.86	39°43'59.158"N	104°38'40.460"W	1.17	
8769.00	88.800	269.560	7858.75	758.76	-167.83	-757.30	3240491.34	1693042.26	39°43'59.151"N	104°38'41.663"W	0.01	
8864.00	88.550	269.310	7860.95	853.74	-168.76	-852.27	3240396.38	1693040.42	39°43'59.142"N	104°38'42.879"W	0.37	
8958.00	89.510	273.330	7862.54	947.65	-166.60	-946.21	3240302.43	1693041.70	39°43'59.163"N	104°38'44.081"W	4.40	
9052.00	88.980	275.050	7863.78	1041.33	-159.73	-1039.95	3240208.63	1693047.68	39°43'59.231"N	104°38'45.281"W	1.91	
9147.00	88.920	273.090	7865.52	1136.00	-152.99	-1134.69	3240113.83	1693053.53	39°43'59.298"N	104°38'46.494"W	2.06	
9242.00	88.950	272.600	7867.29	1230.82	-148.27	-1229.55	3240018.92	1693057.35	39°43'59.344"N	104°38'47.708"W	0.52	
9336.00	88.710	270.370	7869.21	1324.74	-145.84	-1323.49	3239924.96	1693058.90	39°43'59.368"N	104°38'48.911"W	2.39	
9431.00	89.260	270.470	7870.89	1419.71	-145.14	-1418.48	3239829.98	1693058.70	39°43'59.375"N	104°38'50.126"W	0.59	
9526.00	88.980	275.910	7872.35	1514.47	-139.86	-1513.28	3239735.13	1693063.08	39°43'59.427"N	104°38'51.340"W	5.73	
9620.00	88.980	278.740	7874.02	1607.57	-127.88	-1606.49	3239641.81	1693074.18	39°43'59.546"N	104°38'52.533"W	3.01	
9715.00	88.920	277.740	7875.77	1701.44	-114.26	-1700.49	3239547.69	1693086.91	39°43'59.680"N	104°38'53.736"W	1.05	
9809.00	88.830	271.920	7877.61	1794.98	-106.35	-1794.10	3239454.01	1693093.94	39°43'59.758"N	104°38'54.934"W	6.19	
9903.00	88.710	269.580	7879.63	1888.93	-105.12	-1888.07	3239360.04	1693094.28	39°43'59.770"N	104°38'56.137"W	2.49	
9998.00	88.800	267.400	7881.70	1983.88	-107.63	-1983.00	3239265.13	1693090.88	39°43'59.746"N	104°38'57.352"W	2.30	
10092.00	88.890	264.820	7883.59	2077.69	-114.00	-2076.76	3239171.43	1693083.62	39°43'59.683"N	104°38'58.552"W	2.75	
10186.00	88.830	263.370	7885.46	2171.26	-123.67	-2170.24	3239078.05	1693073.07	39°43'59.587"N	104°38'59.749"W	1.54	
10280.00	88.860	262.010	7887.36	2264.57	-135.63	-2263.46	3238984.95	1693060.23	39°43'59.469"N	104°39'00.942"W	1.45	
10375.00	88.640	262.930	7889.43	2358.84	-148.07	-2357.61	3238890.92	1693046.90	39°43'59.346"N	104°39'02.147"W	1.00	
10469.00	89.540	265.480	7890.92	2452.42	-157.56	-2451.11	3238797.51	1693036.53	39°43'59.252"N	104°39'03.344"W	2.88	
10563.00	88.740	271.080	7892.33	2546.35	-160.38	-2545.02	3238703.64	1693032.82	39°43'59.224"N	104°39'04.546"W	6.02	



Actual Wellpath Report

PROPERTY RESERVE #4-65 3-4 2DH AWP

Page n of nn



REFERENCE WELLPATH IDENTIFICATION

Operator	BURLINGTON RESOURCES	Slot	SLOT#01 PROPERTY RESERVE #4-65 3-4 2DH (2308'FNL & 425'FEL, SEC.03)
Area	COLORADO	Well	PROPERTY RESERVE #4-65 3-4 2DH
Field	ARAPAHOE COUNTY (NAD83/TN)	Wellbore	PROPERTY RESERVE #4-65 3-4 2DH AWP
Facility	SEC.03-T04S-R65W		

WELLPATH DATA (168 stations)

MD [ft]	Inclination [°]	Azimuth [°]	TVD [ft]	Vert Sect [ft]	North [ft]	East [ft]	Grid East [US ft]	Grid North [US ft]	Latitude	Longitude	DLS [°/100ft]	Comments
10658.00	88.890	272.870	7894.30	2641.23	-157.11	-2639.94	3238608.69	1693035.19	39°43'59.256"N	104°39'05.761"W	1.89	
10752.00	89.020	273.070	7896.01	2735.05	-152.24	-2733.80	3238514.79	1693039.18	39°43'59.304"N	104°39'06.962"W	0.25	
10847.00	89.080	273.130	7897.59	2829.84	-147.10	-2828.65	3238419.90	1693043.42	39°43'59.355"N	104°39'08.177"W	0.09	
10942.00	89.050	273.450	7899.14	2924.62	-141.65	-2923.48	3238325.02	1693047.97	39°43'59.408"N	104°39'09.390"W	0.34	
11036.00	88.860	273.350	7900.85	3018.39	-136.08	-3017.30	3238231.15	1693052.66	39°43'59.463"N	104°39'10.591"W	0.23	
11130.00	88.950	273.560	7902.65	3112.15	-130.42	-3111.11	3238137.29	1693057.44	39°43'59.519"N	104°39'11.792"W	0.24	
11224.00	88.980	274.100	7904.35	3205.86	-124.14	-3204.88	3238043.46	1693062.83	39°43'59.581"N	104°39'12.992"W	0.58	
11319.00	88.800	272.810	7906.19	3300.61	-118.41	-3299.69	3237948.61	1693067.66	39°43'59.638"N	104°39'14.206"W	1.37	
11413.00	89.480	269.760	7907.60	3394.54	-116.31	-3393.64	3237854.64	1693068.88	39°43'59.658"N	104°39'15.409"W	3.32	
11508.00	88.800	269.860	7909.02	3489.53	-116.62	-3488.63	3237759.66	1693067.67	39°43'59.655"N	104°39'16.624"W	0.72	
11602.00	89.010	266.770	7910.82	3583.48	-119.38	-3582.56	3237665.76	1693064.02	39°43'59.628"N	104°39'17.827"W	3.29	
11696.00	89.050	268.110	7912.41	3677.41	-123.58	-3676.45	3237571.91	1693058.93	39°43'59.586"N	104°39'19.028"W	1.43	
11791.00	89.570	268.060	7913.56	3772.37	-126.76	-3771.39	3237477.01	1693054.86	39°43'59.555"N	104°39'20.244"W	0.55	
11885.00	89.480	264.050	7914.34	3866.18	-133.22	-3865.15	3237383.32	1693047.51	39°43'59.491"N	104°39'21.444"W	4.27	
11979.00	89.540	262.630	7915.14	3959.63	-144.12	-3958.51	3237290.07	1693035.73	39°43'59.383"N	104°39'22.639"W	1.51	
12074.00	89.540	264.840	7915.90	4054.15	-154.49	-4052.93	3237195.74	1693024.47	39°43'59.280"N	104°39'23.847"W	2.33	
12168.00	89.540	266.370	7916.66	4147.92	-161.69	-4146.65	3237102.10	1693016.39	39°43'59.209"N	104°39'25.047"W	1.63	
12262.00	89.600	268.850	7917.36	4241.86	-165.61	-4240.56	3237008.23	1693011.58	39°43'59.170"N	104°39'26.249"W	2.64	
12356.00	89.410	272.060	7918.17	4335.83	-164.87	-4334.54	3236914.25	1693011.44	39°43'59.177"N	104°39'27.452"W	3.42	
12451.00	89.450	271.210	7919.12	4430.76	-162.16	-4429.49	3236819.27	1693013.25	39°43'59.204"N	104°39'28.667"W	0.90	
12545.00	89.480	273.020	7920.00	4524.66	-158.69	-4523.42	3236725.32	1693015.84	39°43'59.238"N	104°39'29.870"W	1.93	
12639.00	89.450	275.550	7920.88	4618.32	-151.66	-4617.15	3236631.53	1693021.97	39°43'59.307"N	104°39'31.069"W	2.69	
12734.00	89.420	276.820	7921.81	4712.66	-141.43	-4711.59	3236537.00	1693031.32	39°43'59.408"N	104°39'32.278"W	1.34	
12828.00	89.450	277.440	7922.74	4805.82	-129.76	-4804.86	3236443.62	1693042.10	39°43'59.523"N	104°39'33.472"W	0.66	
12923.00	89.450	275.560	7923.65	4900.10	-119.01	-4899.24	3236349.15	1693051.96	39°43'59.629"N	104°39'34.680"W	1.98	
13017.00	89.380	272.180	7924.61	4993.81	-112.67	-4993.00	3236255.32	1693057.42	39°43'59.692"N	104°39'35.880"W	3.60	
13112.00	90.000	266.990	7925.13	5088.78	-113.35	-5087.97	3236160.37	1693055.84	39°43'59.685"N	104°39'37.096"W	5.50	
13206.00	89.780	265.960	7925.31	5182.64	-119.13	-5181.79	3236066.61	1693049.17	39°43'59.627"N	104°39'38.297"W	1.12	
13301.00	90.000	264.460	7925.49	5277.38	-127.07	-5276.45	3235972.02	1693040.34	39°43'59.549"N	104°39'39.508"W	1.60	
13395.00	89.940	263.930	7925.54	5370.97	-136.57	-5369.97	3235878.60	1693029.95	39°43'59.455"N	104°39'40.705"W	0.57	
13490.00	89.940	268.440	7925.64	5465.79	-142.89	-5464.74	3235783.90	1693022.74	39°43'59.392"N	104°39'41.918"W	4.75	
13585.00	89.940	270.750	7925.74	5560.78	-143.56	-5559.73	3235688.92	1693021.17	39°43'59.385"N	104°39'43.134"W	2.43	
13679.00	89.820	272.930	7925.93	5654.70	-140.55	-5653.67	3235594.95	1693023.30	39°43'59.415"N	104°39'44.337"W	2.32	
13773.00	89.850	271.420	7926.20	5748.59	-136.98	-5747.60	3235500.99	1693025.98	39°43'59.450"N	104°39'45.539"W	1.61	
13867.00	89.940	271.940	7926.38	5842.52	-134.22	-5841.56	3235407.01	1693027.85	39°43'59.477"N	104°39'46.742"W	0.56	
13962.00	89.910	272.820	7926.50	5937.40	-130.28	-5936.48	3235312.06	1693030.90	39°43'59.516"N	104°39'47.957"W	0.93	
14056.00	90.000	270.510	7926.57	6031.33	-127.55	-6030.43	3235218.09	1693032.74	39°43'59.542"N	104°39'49.159"W	2.46	
14151.00	89.880	268.700	7926.67	6126.32	-128.20	-6125.43	3235123.10	1693031.19	39°43'59.536"N	104°39'50.375"W	1.91	
14246.00	89.850	268.150	7926.90	6221.31	-130.81	-6220.39	3235028.17	1693027.68	39°43'59.510"N	104°39'51.591"W	0.58	
14340.00	89.940	268.120	7927.07	6315.28	-133.87	-6314.34	3234934.25	1693023.74	39°43'59.479"N	104°39'52.793"W	0.10	
14434.00	89.880	269.010	7927.22	6409.27	-136.23	-6408.31	3234840.31	1693020.50	39°43'59.456"N	104°39'53.996"W	0.95	
14529.00	89.940	268.350	7927.37	6504.26	-138.41	-6503.28	3234745.36	1693017.41	39°43'59.434"N	104°39'55.212"W	0.70	
14623.00	89.940	267.400	7927.47	6598.22	-141.90	-6597.22	3234651.47	1693013.04	39°43'59.399"N	104°39'56.414"W	1.01	
14717.00	89.880	267.740	7927.61	6692.17	-145.89	-6691.13	3234557.59	1693008.17	39°43'59.360"N	104°39'57.616"W	0.37	
14812.00	89.970	268.530	7927.74	6787.14	-148.98	-6786.08	3234462.68	1693004.18	39°43'59.329"N	104°39'58.832"W	0.84	



Actual Wellpath Report

PROPERTY RESERVE #4-65 3-4 2DH AWP

Page n of nn



REFERENCE WELLPATH IDENTIFICATION

Operator	BURLINGTON RESOURCES	Slot	SLOT#01 PROPERTY RESERVE #4-65 3-4 2DH (2308'FNL & 425'FEL, SEC.03)
Area	COLORADO	Well	PROPERTY RESERVE #4-65 3-4 2DH
Field	ARAPAHOE COUNTY (NAD83/TN)	Wellbore	PROPERTY RESERVE #4-65 3-4 2DH AWB
Facility	SEC.03-T04S-R65W		

WELLPATH DATA (168 stations)

MD [ft]	Inclination [°]	Azimuth [°]	TVD [ft]	Vert Sect [ft]	North [ft]	East [ft]	Grid East [US ft]	Grid North [US ft]	Latitude	Longitude	DLS [°/100ft]	Comments
14906.00	89.940	270.600	7927.81	6881.13	-149.69	-6880.07	3234368.70	1693002.58	39°43'59.321"N	104°40'00.035"W	2.20	
15001.00	89.970	275.170	7927.89	6975.94	-144.91	-6974.93	3234273.80	1693006.46	39°43'59.368"N	104°40'01.249"W	4.81	
15095.00	89.850	273.320	7928.03	7069.61	-137.95	-7068.67	3234180.00	1693012.54	39°43'59.437"N	104°40'02.449"W	1.97	
15189.00	89.970	271.930	7928.18	7163.47	-133.65	-7162.56	3234086.07	1693015.95	39°43'59.479"N	104°40'03.651"W	1.48	
15283.00	89.940	273.690	7928.26	7257.31	-129.04	-7256.45	3233992.15	1693019.68	39°43'59.525"N	104°40'04.852"W	1.87	
15378.00	89.970	272.890	7928.33	7352.10	-123.59	-7351.29	3233897.26	1693024.23	39°43'59.578"N	104°40'06.066"W	0.84	
15472.00	90.190	272.020	7928.20	7445.97	-119.56	-7445.20	3233803.31	1693027.37	39°43'59.618"N	104°40'07.268"W	0.95	
15567.00	90.000	269.240	7928.04	7540.94	-118.52	-7540.19	3233708.32	1693027.52	39°43'59.628"N	104°40'08.484"W	2.93	
15661.00	89.880	265.090	7928.14	7634.85	-123.17	-7634.05	3233614.51	1693021.98	39°43'59.582"N	104°40'09.686"W	4.42	
15755.00	90.030	264.730	7928.21	7728.55	-131.50	-7727.68	3233520.96	1693012.76	39°43'59.499"N	104°40'10.884"W	0.41	
15850.00	89.380	264.340	7928.70	7823.19	-140.55	-7822.25	3233426.48	1693002.82	39°43'59.409"N	104°40'12.094"W	0.80	
15944.00	89.850	261.010	7929.33	7916.51	-152.54	-7915.47	3233333.38	1692989.96	39°43'59.290"N	104°40'13.288"W	3.58	
16039.00	89.660	269.320	7929.74	8011.15	-160.54	-8010.04	3233238.89	1692981.07	39°43'59.211"N	104°40'14.498"W	8.75	
16133.00	89.850	272.060	7930.14	8105.12	-159.40	-8104.03	3233144.90	1692981.31	39°43'59.222"N	104°40'15.701"W	2.92	
16228.00	89.970	273.520	7930.29	8199.96	-154.78	-8198.91	3233049.97	1692985.04	39°43'59.267"N	104°40'16.916"W	1.54	
16322.00	89.910	273.930	7930.39	8293.71	-148.67	-8292.71	3232956.12	1692990.26	39°43'59.327"N	104°40'18.116"W	0.44	
16417.00	90.060	274.590	7930.42	8388.38	-141.62	-8387.45	3232861.32	1692996.42	39°43'59.397"N	104°40'19.329"W	0.71	
16511.00	90.060	274.750	7930.32	8481.99	-133.96	-8481.14	3232767.57	1693003.19	39°43'59.472"N	104°40'20.528"W	0.17	
16606.00	89.820	274.900	7930.42	8576.58	-125.97	-8575.80	3232672.83	1693010.29	39°43'59.551"N	104°40'21.740"W	0.30	
16701.00	89.940	275.730	7930.62	8671.09	-117.17	-8670.39	3232578.16	1693018.19	39°43'59.637"N	104°40'22.951"W	0.88	
16795.00	89.260	275.610	7931.27	8764.54	-107.89	-8763.93	3232484.54	1693026.60	39°43'59.729"N	104°40'24.148"W	0.73	
16889.00	89.260	274.350	7932.49	8858.10	-99.73	-8857.56	3232390.83	1693033.87	39°43'59.809"N	104°40'25.347"W	1.34	
16984.00	89.260	272.610	7933.71	8952.86	-93.96	-8952.38	3232295.97	1693038.74	39°43'59.866"N	104°40'26.560"W	1.83	
17078.00	89.420	270.100	7934.80	9046.79	-91.74	-9046.34	3232201.99	1693040.08	39°43'59.888"N	104°40'27.763"W	2.68	
17172.00	89.380	268.120	7935.78	9140.78	-93.20	-9140.32	3232108.03	1693037.73	39°43'59.873"N	104°40'28.966"W	2.11	
17266.00	89.260	268.480	7936.90	9234.76	-95.99	-9234.27	3232014.11	1693034.05	39°43'59.845"N	104°40'30.168"W	0.40	
17360.00	89.350	268.850	7938.04	9328.74	-98.18	-9328.23	3231920.17	1693030.98	39°43'59.823"N	104°40'31.371"W	0.41	
17454.00	89.320	270.690	7939.13	9422.73	-98.55	-9422.22	3231826.19	1693029.71	39°43'59.819"N	104°40'32.574"W	1.96	
17549.00	89.350	271.480	7940.23	9517.68	-96.75	-9517.20	3231731.20	1693030.61	39°43'59.836"N	104°40'33.790"W	0.83	
17643.00	89.350	272.030	7941.30	9611.60	-93.88	-9611.15	3231637.23	1693032.60	39°43'59.864"N	104°40'34.992"W	0.59	
17737.00	89.350	271.850	7942.36	9705.51	-90.69	-9705.09	3231543.27	1693034.90	39°43'59.895"N	104°40'36.195"W	0.19	
17831.00	89.290	271.400	7943.48	9799.44	-88.03	-9799.04	3231449.29	1693036.68	39°43'59.921"N	104°40'37.398"W	0.48	LAST BHGE MWD SURVEY
17855.00	89.290	271.400	7943.78	9823.42	-87.44	-9823.04	3231425.29	1693037.04	39°43'59.927"N	104°40'37.705"W	0.00	PROJECTION TO BIT

HOLE & CASING SECTIONS - Ref Wellbore: PROPERTY RESERVE #4-65 3-4 2DH AWB Ref Wellpath: PROPERTY RESERVE #4-65 3-4 2DH AWP

String/Diameter	Start MD [ft]	End MD [ft]	Interval [ft]	Start TVD [ft]	End TVD [ft]	Start N/S [ft]	Start E/W [ft]	End N/S [ft]	End E/W [ft]
9.625in Casing Surface	25.00	2201.00	2176.00	25.00	2200.90	0.00	0.00	14.77	-9.17
8.75in Open Hole	2201.00	17855.00	15654.00	2200.90	7943.78	14.77	-9.17	-87.44	-9823.04
5.5in Casing Production	25.00	17855.00	17830.00	25.00	7943.78	0.00	0.00	-87.44	-9823.04



Actual Wellpath Report

PROPERTY RESERVE #4-65 3-4 2DH AWP

Page n of nn



REFERENCE WELLPATH IDENTIFICATION			
Operator	BURLINGTON RESOURCES	Slot	SLOT#01 PROPERTY RESERVE #4-65 3-4 2DH (2308'FNL & 425'FEL, SEC.03)
Area	COLORADO	Well	PROPERTY RESERVE #4-65 3-4 2DH
Field	ARAPAHOE COUNTY (NAD83/TN)	Wellbore	PROPERTY RESERVE #4-65 3-4 2DH AWB
Facility	SEC.03-T04S-R65W		

TARGETS								
Name	TVD [ft]	North [ft]	East [ft]	Grid East [US ft]	Grid North [US ft]	Latitude	Longitude	Shape
SEC.03-T04S-R65W	0.00	0.00	0.00	3241247.02	1693217.22	39°44'00.810"N	104°38'31.970"W	polygon
SEC.04-T04S-R65W	0.00	0.00	0.00	3241247.02	1693217.22	39°44'00.810"N	104°38'31.970"W	polygon
PROPERTY RESERVE #4-65 3-4 2DH LP ON PLAT REV-1 (2482'FNL & 613'FEL, SEC.03)	7851.00	-174.04	-189.06	3241059.60	1693041.41	39°43'59.090"N	104°38'34.390"W	point
PROPERTY RESERVE #4-65 3-4 2DH BHL ON PLAT REV-1 (2482'FNL & 325'FWL, SEC.04)	7952.00	-128.64	-9825.81	3231422.91	1692995.81	39°43'59.520"N	104°40'37.740"W	point
SEC.04-T04S-R65W HARDLINE (325'FWL)	7952.00	0.00	0.00	3241247.02	1693217.22	39°44'00.810"N	104°38'31.970"W	polygon

WELLPATH COMPOSITION - Ref Wellbore: PROPERTY RESERVE #4-65 3-4 2DH AWB					Ref Wellpath: PROPERTY RESERVE #4-65 3-4 2DH AWP	
Start MD [ft]	End MD [ft]	Positional Uncertainty Model	Log Name/Comment		Wellbore	
25.00	2170.00	Gyrodata standard - Drop gyro or Multi-shot	GYRODATA SURFACE SURVEYS <0 - 2170>		PROPERTY RESERVE #4-65 3-4 2DH AWB	
2170.00	17831.00	BHI AutoTrak Curve (IFR1, Short)	BHGE AUTOTRAK CURVE (IFR1, SHORT) MONOBORE <2170 - 17831>		PROPERTY RESERVE #4-65 3-4 2DH AWB	
17831.00	17855.00	Blind Drilling (std)	Projection to bit		PROPERTY RESERVE #4-65 3-4 2DH AWB	



Actual Wellpath Report

PROPERTY RESERVE #4-65 3-4 2DH AWP

Page n of nn



REFERENCE WELLPATH IDENTIFICATION			
Operator	BURLINGTON RESOURCES	Slot	SLOT#01 PROPERTY RESERVE #4-65 3-4 2DH (2308'FNL & 425'FEL, SEC.03)
Area	COLORADO	Well	PROPERTY RESERVE #4-65 3-4 2DH
Field	ARAPAHOE COUNTY (NAD83/TN)	Wellbore	PROPERTY RESERVE #4-65 3-4 2DH AWB
Facility	SEC.03-T04S-R65W		

WELLPATH COMMENTS				
MD [ft]	Inclination [°]	Azimuth [°]	TVD [ft]	Comment
2170.00	0.570	319.460	2169.90	TIE ON SURVEY
2257.00	0.200	16.150	2256.90	FIRST BHGE MWD SURVEY
17831.00	89.290	271.400	7943.48	LAST BHGE MWD SURVEY
17855.00	89.290	271.400	7943.78	PROJECTION TO BIT