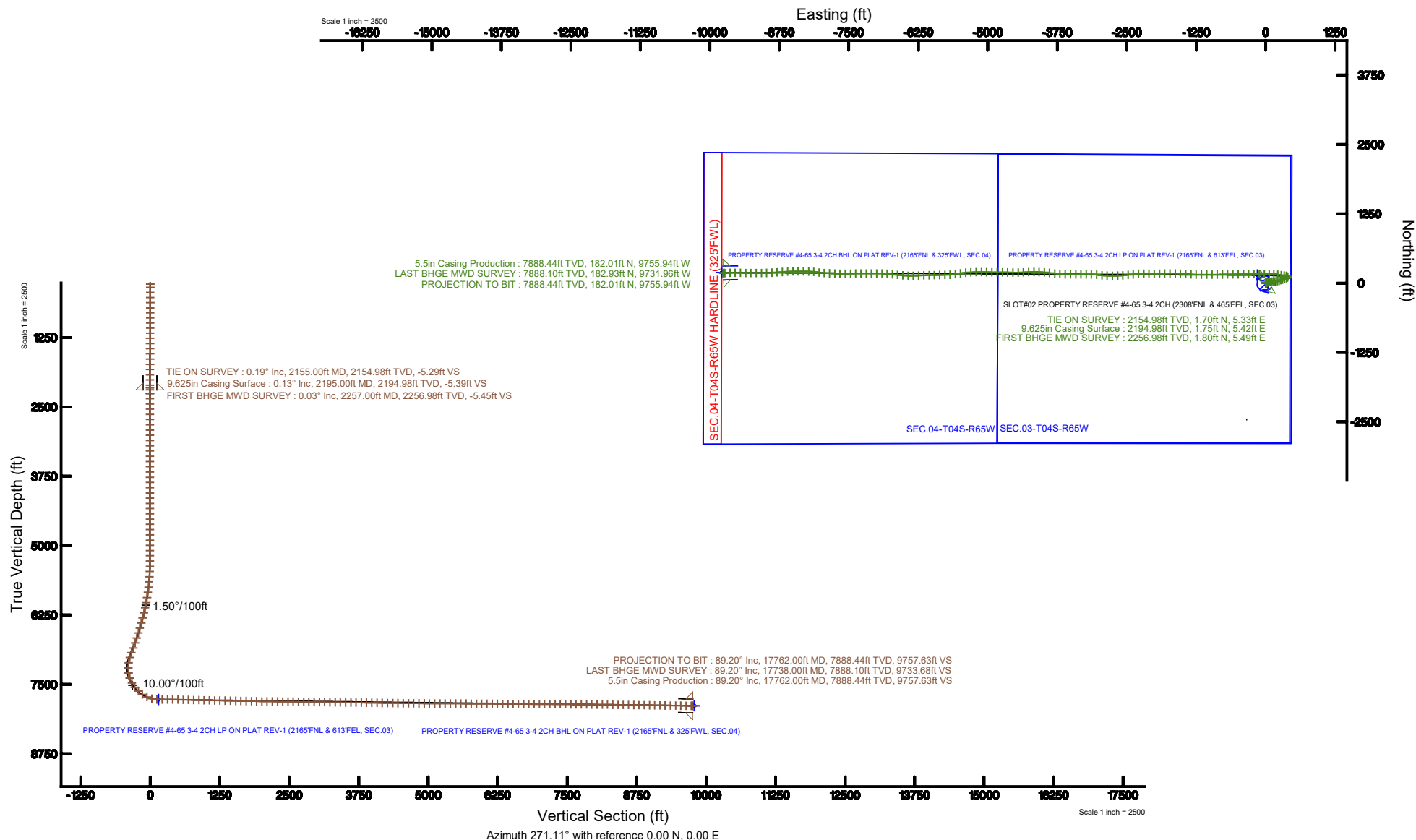


Location:	COLORADO	Slot:	SLOT#02 PROPERTY RESERVE #4-65 3-4 2CH (2308'FNL & 465'FEL, SEC.03)
Field:	ARAPAHOE COUNTY (NAD83/TN)	Well:	PROPERTY RESERVE #4-65 3-4 2CH
Locality:	SEC.03-T04S-R65W	Wellbore:	PROPERTY RESERVE #4-65 3-4 2CH PWB



Plot reference wellpath is PROPERTY RESERVE #4-65 3-4 2CH (REV-D.0) PWP	Grid System: NAD83 / Lambert Colorado SP, Central Zone (502), US feet
True vertical depths are referenced to NABORS B16 (25KB) (RKB)	North Reference: True north
Measured depths are referenced to NABORS B16 (25KB) (RKB)	Scale: True distance
NABORS B16 (25KB) (RKB) to Mean Sea Level: 9637 feet	Depths are in feet
Mean Sea Level to Mud line (At Slot: SLOT#02 PROPERTY RESERVE #4-65 3-4 2CH (2308FNL & 465FEL, SEC.03)): 0 feet	Created by: kornel on 2019-02-20
Coordinates are in feet referenced to Slot	Database: WA DENVER





Actual Wellpath Report

PROPERTY RESERVE #4-65 3-4 2CH AWP

Page 1 of 7



REFERENCE WELLPATH IDENTIFICATION			
Operator	BURLINGTON RESOURCES	Slot	SLOT#02 PROPERTY RESERVE #4-65 3-4 2CH (2308'FNL & 465'FEL, SEC.03)
Area	COLORADO	Well	PROPERTY RESERVE #4-65 3-4 2CH
Field	ARAPAHOE COUNTY (NAD83/TN)	Wellbore	PROPERTY RESERVE #4-65 3-4 2CH AWB
Facility	SEC.03-T04S-R65W		

REPORT SETUP INFORMATION			
Projection System	NAD83 / Lambert Colorado SP, Central Zone (502), US feet	Software System	WellArchitect® 5.1
North Reference	True	User	Komerat
Scale	0.999997	Report Generated	2/20/2019 at 1:32:40 PM
Convergence at slot	0.54° East	Database/Source file	WA DENVER/PROPERTY_RESERVE_#4-65_3-4_2CH_AWP.xml

WELLPATH LOCATION						
	Local coordinates		Grid coordinates		Geographic coordinates	
	North[ft]	East[ft]	Easting[US ft]	Northing[US ft]	Latitude	Longitude
Slot Location	0.00	-39.84	3241207.17	1693216.85	39°44'00.810"N	104°38'32.480"W
Facility Reference Pt			3241247.02	1693217.22	39°44'00.810"N	104°38'31.970"W
Field Reference Pt			3256721.09	1679994.75	39°41'48.650"N	104°35'15.610"W

WELLPATH DATUM			
Calculation method	Minimum curvature	NABORS B16 (25'KB) (RKB) to Facility Vertical Datum	5637.00ft
Horizontal Reference Pt	Slot	NABORS B16 (25'KB) (RKB) to Mean Sea Level	5637.00ft
Vertical Reference Pt	NABORS B16 (25'KB) (RKB)	NABORS B16 (25'KB) (RKB) to Mud Line at Slot (SLOT#02 PROPERTY RESERVE #4-65 3-4 2CH (2308'FNL & 465'FEL, SEC.03))	5637.00ft
MD Reference Pt	NABORS B16 (25'KB) (RKB)	Section Origin	N 0.00, E 0.00 ft
Field Vertical Reference	Mean Sea Level	Section Azimuth	271.07°



Actual Wellpath Report

PROPERTY RESERVE #4-65 3-4 2CH AWP

Page 2 of 7



REFERENCE WELLPATH IDENTIFICATION			
Operator	BURLINGTON RESOURCES	Slot	SLOT#02 PROPERTY RESERVE #4-65 3-4 2CH (2308'FNL & 465'FEL, SEC.03)
Area	COLORADO	Well	PROPERTY RESERVE #4-65 3-4 2CH
Field	ARAPAHOE COUNTY (NAD83/TN)	Wellbore	PROPERTY RESERVE #4-65 3-4 2CH AWP
Facility	SEC.03-T04S-R65W		

WELLPATH DATA (167 stations)												
MD [ft]	Inclination [°]	Azimuth [°]	TVD [ft]	Vert Sect [ft]	North [ft]	East [ft]	Grid East [US ft]	Grid North [US ft]	Latitude	Longitude	DLS [°/100ft]	Comments
2155.00	0.190	60.160	2154.98	-5.29	1.70	5.33	3241212.48	1693218.59	39°44'00.827"N	104°38'32.412"W	0.05	TIE ON SURVEY
2257.00	0.030	26.990	2256.98	-5.45	1.80	5.49	3241212.64	1693218.70	39°44'00.828"N	104°38'32.410"W	0.16	FIRST BHGE MWD SURVEY
2352.00	0.040	233.400	2351.98	-5.44	1.81	5.47	3241212.63	1693218.71	39°44'00.828"N	104°38'32.410"W	0.07	
2446.00	0.040	93.970	2445.98	-5.44	1.79	5.48	3241212.63	1693218.68	39°44'00.828"N	104°38'32.410"W	0.08	
2540.00	0.040	24.440	2539.98	-5.49	1.81	5.52	3241212.68	1693218.71	39°44'00.828"N	104°38'32.409"W	0.05	
2635.00	0.000	98.250	2634.98	-5.50	1.84	5.54	3241212.69	1693218.74	39°44'00.828"N	104°38'32.409"W	0.04	
2729.00	0.000	98.250	2728.98	-5.50	1.84	5.54	3241212.69	1693218.74	39°44'00.828"N	104°38'32.409"W	0.00	
2824.00	0.030	40.330	2823.98	-5.52	1.86	5.55	3241212.71	1693218.76	39°44'00.828"N	104°38'32.409"W	0.03	
2918.00	0.040	36.310	2917.98	-5.55	1.91	5.59	3241212.74	1693218.81	39°44'00.829"N	104°38'32.408"W	0.01	
3012.00	0.040	324.740	3011.98	-5.55	1.96	5.59	3241212.74	1693218.86	39°44'00.829"N	104°38'32.408"W	0.05	
3107.00	0.060	46.000	3106.98	-5.57	2.02	5.60	3241212.76	1693218.92	39°44'00.830"N	104°38'32.408"W	0.07	
3201.00	0.030	307.560	3200.98	-5.58	2.07	5.62	3241212.77	1693218.97	39°44'00.830"N	104°38'32.408"W	0.08	
3296.00	0.040	305.480	3295.98	-5.53	2.11	5.57	3241212.73	1693219.01	39°44'00.831"N	104°38'32.409"W	0.01	
3390.00	0.000	98.250	3389.98	-5.51	2.12	5.55	3241212.70	1693219.02	39°44'00.831"N	104°38'32.409"W	0.04	
3485.00	0.000	98.250	3484.98	-5.51	2.12	5.55	3241212.70	1693219.02	39°44'00.831"N	104°38'32.409"W	0.00	
3579.00	0.040	156.420	3578.98	-5.52	2.09	5.56	3241212.71	1693218.99	39°44'00.831"N	104°38'32.409"W	0.04	
3673.00	0.060	203.140	3672.98	-5.52	2.02	5.55	3241212.71	1693218.92	39°44'00.830"N	104°38'32.409"W	0.05	
3768.00	0.070	196.710	3767.98	-5.48	1.92	5.52	3241212.67	1693218.82	39°44'00.829"N	104°38'32.409"W	0.01	
3862.00	0.100	183.860	3861.98	-5.46	1.78	5.50	3241212.65	1693218.68	39°44'00.828"N	104°38'32.410"W	0.04	
3956.00	0.040	223.020	3955.98	-5.44	1.68	5.47	3241212.63	1693218.57	39°44'00.827"N	104°38'32.410"W	0.08	
4051.00	0.040	223.650	4050.98	-5.39	1.63	5.42	3241212.58	1693218.53	39°44'00.826"N	104°38'32.411"W	0.00	
4145.00	0.040	245.730	4144.98	-5.34	1.59	5.37	3241212.53	1693218.49	39°44'00.826"N	104°38'32.411"W	0.02	
4240.00	0.100	290.420	4239.98	-5.23	1.61	5.26	3241212.42	1693218.50	39°44'00.826"N	104°38'32.413"W	0.08	
4334.00	0.090	206.380	4333.98	-5.12	1.57	5.15	3241212.31	1693218.46	39°44'00.825"N	104°38'32.414"W	0.14	
4428.00	0.070	207.860	4427.98	-5.06	1.45	5.09	3241212.25	1693218.35	39°44'00.824"N	104°38'32.415"W	0.02	
4523.00	0.430	210.420	4522.98	-4.86	1.09	4.88	3241212.05	1693217.99	39°44'00.821"N	104°38'32.417"W	0.38	
4617.00	0.470	41.300	4616.98	-4.94	1.08	4.96	3241212.12	1693217.97	39°44'00.821"N	104°38'32.417"W	0.95	
4712.00	0.090	19.060	4711.98	-5.21	1.44	5.24	3241212.40	1693218.34	39°44'00.824"N	104°38'32.413"W	0.41	
4806.00	0.090	12.980	4805.98	-5.25	1.58	5.28	3241212.44	1693218.48	39°44'00.826"N	104°38'32.412"W	0.01	
4901.00	0.130	27.170	4900.98	-5.32	1.75	5.35	3241212.51	1693218.65	39°44'00.827"N	104°38'32.412"W	0.05	
4995.00	0.030	246.910	4994.98	-5.34	1.84	5.38	3241212.53	1693218.73	39°44'00.828"N	104°38'32.411"W	0.16	
5089.00	0.030	164.510	5088.98	-5.32	1.80	5.36	3241212.52	1693218.70	39°44'00.828"N	104°38'32.411"W	0.04	
5184.00	0.030	124.190	5183.98	-5.35	1.76	5.39	3241212.54	1693218.66	39°44'00.827"N	104°38'32.411"W	0.02	
5278.00	0.070	201.460	5277.98	-5.35	1.70	5.39	3241212.54	1693218.60	39°44'00.827"N	104°38'32.411"W	0.07	
5373.00	0.730	55.190	5372.97	-5.82	1.99	5.86	3241213.02	1693218.89	39°44'00.830"N	104°38'32.405"W	0.83	
5467.00	2.750	56.700	5466.93	-8.17	3.57	8.24	3241215.38	1693220.49	39°44'00.845"N	104°38'32.375"W	2.15	
5561.00	4.450	63.790	5560.74	-13.27	6.42	13.39	3241220.51	1693223.39	39°44'00.873"N	104°38'32.309"W	1.87	
5656.00	5.900	71.410	5655.35	-21.15	9.60	21.33	3241228.41	1693226.65	39°44'00.905"N	104°38'32.207"W	1.69	
5750.00	7.190	73.410	5748.73	-31.30	12.82	31.55	3241238.60	1693229.97	39°44'00.937"N	104°38'32.076"W	1.39	
5844.00	7.960	76.860	5841.91	-43.22	15.98	43.52	3241250.54	1693233.24	39°44'00.968"N	104°38'31.923"W	0.95	
5939.00	9.940	80.070	5935.75	-57.64	18.89	58.01	3241265.00	1693236.29	39°44'00.997"N	104°38'31.738"W	2.15	
6033.00	10.440	80.770	6028.27	-73.99	21.66	74.40	3241281.37	1693239.21	39°44'01.024"N	104°38'31.528"W	0.55	
6127.00	11.840	82.710	6120.50	-91.91	24.25	92.38	3241299.32	1693241.96	39°44'01.050"N	104°38'31.298"W	1.54	
6222.00	13.540	86.110	6213.17	-112.63	26.24	113.14	3241320.06	1693244.15	39°44'01.069"N	104°38'31.032"W	1.95	
6317.00	15.310	87.850	6305.18	-136.24	27.46	136.77	3241343.68	1693245.60	39°44'01.081"N	104°38'30.729"W	1.92	



Actual Wellpath Report

PROPERTY RESERVE #4-65 3-4 2CH AWP

Page 3 of 7



REFERENCE WELLPATH IDENTIFICATION			
Operator	BURLINGTON RESOURCES	Slot	SLOT#02 PROPERTY RESERVE #4-65 3-4 2CH (2308°FNL & 465°FEL, SEC.03)
Area	COLORADO	Well	PROPERTY RESERVE #4-65 3-4 2CH
Field	ARAPAHOE COUNTY (NAD83/TN)	Wellbore	PROPERTY RESERVE #4-65 3-4 2CH AWB
Facility	SEC.03-T04S-R65W		

WELLPATH DATA (167 stations)												
MD [ft]	Inclination [°]	Azimuth [°]	TVD [ft]	Vert Sect [ft]	North [ft]	East [ft]	Grid East [US ft]	Grid North [US ft]	Latitude	Longitude	DLS [°/100ft]	Comments
6411.00	15.600	89.530	6395.78	-161.26	28.03	161.81	3241368.71	1693246.41	39°44'01.087°N	104°38'30.409°W	0.57	
6505.00	15.970	82.460	6486.24	-186.68	29.83	187.27	3241394.16	1693248.45	39°44'01.105°N	104°38'30.083°W	2.08	
6599.00	16.910	76.650	6576.40	-212.71	34.69	213.40	3241420.23	1693253.55	39°44'01.153°N	104°38'29.749°W	2.01	
6694.00	18.980	74.580	6666.78	-240.91	41.99	241.74	3241448.50	1693261.11	39°44'01.225°N	104°38'29.386°W	2.28	
6788.00	20.670	71.630	6755.20	-271.22	51.28	272.22	3241478.90	1693270.69	39°44'01.317°N	104°38'28.996°W	2.09	
6883.00	22.590	68.810	6843.51	-303.92	63.16	305.15	3241511.71	1693282.89	39°44'01.434°N	104°38'28.574°W	2.30	
6977.00	22.330	69.580	6930.38	-337.24	75.92	338.72	3241545.16	1693295.96	39°44'01.560°N	104°38'28.144°W	0.42	
7071.00	18.940	68.450	7018.34	-367.95	87.75	369.65	3241575.98	1693308.09	39°44'01.677°N	104°38'27.748°W	3.63	
7166.00	8.340	47.590	7110.58	-387.25	98.10	389.14	3241595.37	1693318.61	39°44'01.779°N	104°38'27.499°W	12.13	
7260.00	7.030	15.810	7203.77	-393.66	108.24	395.75	3241601.88	1693328.81	39°44'01.880°N	104°38'27.414°W	4.66	
7354.00	9.950	320.290	7296.88	-389.81	120.04	392.12	3241598.14	1693340.58	39°44'01.996°N	104°38'27.461°W	8.83	
7449.00	19.590	282.270	7388.82	-368.73	129.78	371.22	3241577.15	1693350.13	39°44'02.093°N	104°38'27.728°W	13.89	
7543.00	29.220	276.230	7474.33	-330.33	135.63	332.92	3241538.79	1693355.62	39°44'02.150°N	104°38'28.219°W	10.57	
7638.00	38.530	278.390	7553.12	-277.77	142.48	280.48	3241486.29	1693361.97	39°44'02.218°N	104°38'28.890°W	9.88	
7732.00	46.580	281.080	7622.31	-215.01	153.33	217.90	3241423.62	1693372.23	39°44'02.325°N	104°38'29.691°W	8.78	
7827.00	54.960	274.320	7682.38	-142.02	162.92	145.08	3241350.71	1693381.13	39°44'02.420°N	104°38'30.623°W	10.39	
7921.00	65.060	267.540	7729.35	-60.78	163.99	63.85	3241269.48	1693381.43	39°44'02.431°N	104°38'31.663°W	12.42	
8015.00	76.710	269.150	7760.08	27.78	161.47	-24.77	3241180.88	1693378.08	39°44'02.406°N	104°38'32.797°W	12.50	
8109.00	88.180	272.040	7772.42	120.79	162.47	-117.78	3241087.86	1693378.20	39°44'02.416°N	104°38'33.988°W	12.58	
8203.00	90.490	270.810	7773.51	214.78	164.81	-211.74	3240993.89	1693379.65	39°44'02.439°N	104°38'35.190°W	2.78	
8298.00	89.350	267.940	7773.64	309.72	163.77	-306.72	3240898.92	1693377.72	39°44'02.429°N	104°38'36.406°W	3.25	
8392.00	89.380	268.490	7774.69	403.60	160.84	-400.67	3240805.00	1693373.90	39°44'02.400°N	104°38'37.609°W	0.59	
8487.00	88.710	269.330	7776.27	498.52	159.04	-495.64	3240710.06	1693371.20	39°44'02.382°N	104°38'38.824°W	1.13	
8581.00	88.800	269.220	7778.31	592.45	157.85	-589.61	3240616.10	1693369.12	39°44'02.370°N	104°38'40.027°W	0.15	
8676.00	88.710	269.000	7780.38	687.37	156.37	-684.58	3240521.16	1693366.75	39°44'02.355°N	104°38'41.243°W	0.25	
8770.00	88.680	269.410	7782.52	781.30	155.07	-778.54	3240427.21	1693364.56	39°44'02.342°N	104°38'42.445°W	0.44	
8864.00	88.800	269.460	7784.58	875.24	154.14	-872.52	3240333.25	1693362.75	39°44'02.333°N	104°38'43.648°W	0.14	
8958.00	88.740	270.120	7786.60	969.19	153.80	-966.49	3240239.28	1693361.51	39°44'02.330°N	104°38'44.851°W	0.70	
9053.00	88.680	270.470	7788.74	1064.16	154.29	-1061.47	3240144.30	1693361.11	39°44'02.335°N	104°38'46.067°W	0.37	
9147.00	88.770	269.160	7790.83	1158.11	153.98	-1155.44	3240050.34	1693359.92	39°44'02.332°N	104°38'47.270°W	1.40	
9242.00	89.140	270.310	7792.56	1253.07	153.54	-1250.42	3239955.36	1693358.58	39°44'02.327°N	104°38'48.486°W	1.27	
9337.00	88.830	273.040	7794.25	1348.04	156.32	-1345.36	3239860.41	1693360.46	39°44'02.355°N	104°38'49.701°W	2.89	
9432.00	88.770	275.270	7796.24	1442.88	163.20	-1440.08	3239765.62	1693366.45	39°44'02.422°N	104°38'50.913°W	2.35	
9526.00	88.610	273.330	7798.39	1536.70	170.25	-1533.79	3239671.85	1693372.61	39°44'02.492°N	104°38'52.113°W	2.07	
9621.00	88.890	270.470	7800.46	1631.65	173.40	-1628.70	3239576.91	1693374.86	39°44'02.523°N	104°38'53.328°W	3.02	
9715.00	88.830	269.130	7802.33	1725.61	173.07	-1722.68	3239482.94	1693373.64	39°44'02.520°N	104°38'54.531°W	1.43	
9810.00	88.650	268.070	7804.42	1820.50	170.75	-1817.63	3239388.02	1693370.43	39°44'02.497°N	104°38'55.746°W	1.13	
9904.00	89.380	267.040	7806.03	1914.31	166.74	-1911.53	3239294.17	1693365.53	39°44'02.457°N	104°38'56.948°W	1.34	
9998.00	89.350	271.620	7807.08	2008.23	165.64	-2005.49	3239200.22	1693363.55	39°44'02.446°N	104°38'58.150°W	4.87	
10092.00	89.230	272.130	7808.24	2102.21	168.71	-2099.43	3239106.25	1693365.73	39°44'02.477°N	104°38'59.353°W	0.56	
10187.00	89.200	269.670	7809.54	2197.20	170.21	-2194.40	3239011.27	1693366.33	39°44'02.491°N	104°39'00.569°W	2.59	
10281.00	89.200	266.230	7810.86	2291.04	166.84	-2288.32	3238917.39	1693362.08	39°44'02.458°N	104°39'01.771°W	3.66	
10375.00	89.350	263.830	7812.05	2384.50	158.70	-2381.95	3238823.84	1693353.06	39°44'02.377°N	104°39'02.969°W	2.56	
10469.00	89.260	263.370	7813.19	2477.69	148.22	-2475.36	3238730.54	1693341.70	39°44'02.274°N	104°39'04.165°W	0.50	
10564.00	89.230	265.390	7814.44	2572.04	138.92	-2569.89	3238636.10	1693331.50	39°44'02.182°N	104°39'05.375°W	2.13	



Actual Wellpath Report

PROPERTY RESERVE #4-65 3-4 2CH AWP

Page 4 of 7



REFERENCE WELLPATH IDENTIFICATION			
Operator	BURLINGTON RESOURCES	Slot	SLOT#02 PROPERTY RESERVE #4-65 3-4 2CH (2308°FNL & 465°FEL, SEC.03)
Area	COLORADO	Well	PROPERTY RESERVE #4-65 3-4 2CH
Field	ARAPAHOE COUNTY (NAD83/TN)	Wellbore	PROPERTY RESERVE #4-65 3-4 2CH AWB
Facility	SEC.03-T04S-R65W		

WELLPATH DATA (167 stations)

MD [ft]	Inclination [°]	Azimuth [°]	TVD [ft]	Vert Sect [ft]	North [ft]	East [ft]	Grid East [US ft]	Grid North [US ft]	Latitude	Longitude	DLS [°/100ft]	Comments
10658.00	89.320	267.640	7815.63	2665.72	133.21	-2663.70	3238542.35	1693324.90	39°44'02.125"N	104°39'06.576"W	2.40	
10753.00	89.170	270.390	7816.88	2760.65	131.58	-2758.67	3238447.40	1693322.37	39°44'02.109"N	104°39'07.791"W	2.90	
10847.00	89.260	272.040	7818.17	2854.63	133.57	-2852.64	3238353.42	1693323.48	39°44'02.128"N	104°39'08.994"W	1.76	
10942.00	89.230	276.710	7819.42	2949.44	140.81	-2947.33	3238258.66	1693329.83	39°44'02.200"N	104°39'10.206"W	4.92	
11036.00	89.320	275.270	7820.61	3043.08	150.62	-3040.80	3238165.10	1693338.76	39°44'02.297"N	104°39'11.403"W	1.53	
11131.00	89.290	272.120	7821.76	3137.97	156.74	-3135.59	3238070.26	1693343.98	39°44'02.357"N	104°39'12.616"W	3.32	
11225.00	89.080	269.080	7823.10	3231.94	157.73	-3229.56	3237976.28	1693344.08	39°44'02.367"N	104°39'13.819"W	3.24	
11319.00	89.200	269.360	7824.51	3325.88	156.45	-3323.54	3237882.32	1693341.91	39°44'02.354"N	104°39'15.022"W	0.32	
11413.00	89.110	269.300	7825.90	3419.83	155.35	-3417.53	3237788.35	1693339.93	39°44'02.343"N	104°39'16.225"W	0.12	
11508.00	89.290	270.610	7827.22	3514.80	155.27	-3512.51	3237693.37	1693338.95	39°44'02.342"N	104°39'17.441"W	1.39	
11602.00	89.380	272.880	7828.31	3608.78	158.14	-3606.46	3237599.40	1693340.93	39°44'02.370"N	104°39'18.643"W	2.42	
11697.00	89.290	274.650	7829.42	3703.67	164.37	-3701.24	3237504.56	1693346.27	39°44'02.432"N	104°39'19.856"W	1.87	
11791.00	89.290	276.140	7830.58	3797.39	173.21	-3794.82	3237410.91	1693354.23	39°44'02.519"N	104°39'21.054"W	1.58	
11885.00	89.170	276.410	7831.85	3890.99	183.48	-3888.25	3237317.39	1693363.62	39°44'02.620"N	104°39'22.250"W	0.31	
11980.00	89.420	274.850	7833.01	3985.68	192.80	-3982.78	3237222.77	1693372.04	39°44'02.712"N	104°39'23.460"W	1.66	
12074.00	89.170	273.020	7834.17	4079.55	199.25	-4076.54	3237128.95	1693377.61	39°44'02.776"N	104°39'24.660"W	1.96	
12168.00	89.200	268.560	7835.51	4173.52	200.55	-4170.50	3237034.99	1693378.02	39°44'02.789"N	104°39'25.863"W	4.74	
12263.00	89.290	267.590	7836.76	4268.38	197.36	-4265.44	3236940.08	1693373.93	39°44'02.757"N	104°39'27.078"W	1.03	
12357.00	89.380	267.000	7837.85	4362.17	192.92	-4359.33	3236846.24	1693368.61	39°44'02.713"N	104°39'28.280"W	0.63	
12451.00	89.140	270.330	7839.07	4456.06	190.73	-4453.28	3236752.31	1693365.53	39°44'02.691"N	104°39'29.483"W	3.55	
12545.00	89.350	270.430	7840.30	4550.05	191.36	-4547.27	3236658.32	1693365.27	39°44'02.697"N	104°39'30.686"W	0.25	
12640.00	89.290	270.850	7841.43	4645.04	192.42	-4642.26	3236563.33	1693365.43	39°44'02.707"N	104°39'31.901"W	0.45	
12734.00	89.480	270.320	7842.44	4739.03	193.38	-4736.25	3236469.34	1693365.50	39°44'02.717"N	104°39'33.105"W	0.60	
12829.00	89.600	270.120	7843.20	4834.02	193.74	-4831.24	3236374.34	1693364.97	39°44'02.720"N	104°39'34.321"W	0.25	
12923.00	89.230	271.490	7844.16	4928.01	195.06	-4925.23	3236280.35	1693365.40	39°44'02.733"N	104°39'35.524"W	1.51	
13018.00	89.940	270.500	7844.85	5023.00	196.71	-5020.21	3236185.36	1693366.16	39°44'02.749"N	104°39'36.739"W	1.28	
13112.00	89.750	270.790	7845.11	5117.00	197.77	-5114.20	3236091.36	1693366.33	39°44'02.759"N	104°39'37.942"W	0.37	
13207.00	89.750	268.960	7845.52	5211.98	197.56	-5209.20	3235996.37	1693365.22	39°44'02.757"N	104°39'39.158"W	1.93	
13301.00	89.660	267.050	7846.00	5305.84	194.29	-5303.13	3235902.47	1693361.06	39°44'02.725"N	104°39'40.361"W	2.03	
13395.00	89.720	264.930	7846.51	5399.46	187.72	-5396.90	3235808.77	1693353.61	39°44'02.660"N	104°39'41.561"W	2.26	
13490.00	89.600	259.900	7847.08	5493.35	175.18	-5491.03	3235714.76	1693340.18	39°44'02.535"N	104°39'42.766"W	5.30	
13585.00	89.660	261.680	7847.69	5586.82	159.98	-5584.80	3235621.14	1693324.09	39°44'02.385"N	104°39'43.966"W	1.87	
13680.00	89.510	266.950	7848.38	5681.12	150.57	-5679.30	3235526.73	1693313.80	39°44'02.292"N	104°39'45.176"W	5.55	
13773.00	89.630	269.640	7849.08	5774.00	147.80	-5772.25	3235433.82	1693310.15	39°44'02.264"N	104°39'46.365"W	2.90	
13868.00	89.570	267.810	7849.74	5868.92	145.69	-5867.22	3235338.87	1693307.14	39°44'02.243"N	104°39'47.581"W	1.93	
13962.00	89.660	269.080	7850.37	5962.81	143.14	-5961.18	3235244.94	1693303.70	39°44'02.218"N	104°39'48.784"W	1.35	
14056.00	89.510	270.150	7851.05	6056.78	142.51	-6055.17	3235150.96	1693302.18	39°44'02.211"N	104°39'49.987"W	1.15	
14152.00	89.630	267.190	7851.77	6152.68	140.28	-6151.13	3235055.02	1693299.05	39°44'02.189"N	104°39'51.215"W	3.09	
14246.00	89.720	265.130	7852.31	6246.33	133.98	-6244.92	3234961.30	1693291.87	39°44'02.127"N	104°39'52.416"W	2.19	
14340.00	89.380	270.180	7853.05	6340.13	130.14	-6338.80	3234867.46	1693287.14	39°44'02.088"N	104°39'53.617"W	5.38	
14435.00	89.600	272.830	7853.89	6435.11	132.63	-6433.76	3234772.48	1693288.74	39°44'02.113"N	104°39'54.833"W	2.80	
14529.00	89.570	274.410	7854.57	6529.02	138.57	-6527.57	3234678.62	1693293.79	39°44'02.171"N	104°39'56.033"W	1.68	
14624.00	89.780	276.170	7855.11	6623.75	147.33	-6622.16	3234583.96	1693301.65	39°44'02.258"N	104°39'57.244"W	1.87	
14718.00	89.630	276.920	7855.60	6717.32	158.04	-6715.54	3234490.47	1693311.48	39°44'02.363"N	104°39'58.440"W	0.81	
14812.00	89.690	274.620	7856.15	6811.00	167.49	-6809.06	3234396.87	1693320.05	39°44'02.456"N	104°39'59.637"W	2.45	



Actual Wellpath Report

PROPERTY RESERVE #4-65 3-4 2CH AWP

Page 5 of 7



REFERENCE WELLPATH IDENTIFICATION			
Operator	BURLINGTON RESOURCES	Slot	SLOT#02 PROPERTY RESERVE #4-65 3-4 2CH (2308'FNL & 465'FEL, SEC.03)
Area	COLORADO	Well	PROPERTY RESERVE #4-65 3-4 2CH
Field	ARAPAHOE COUNTY (NAD83/TN)	Wellbore	PROPERTY RESERVE #4-65 3-4 2CH AWB
Facility	SEC.03-T04S-R65W		

WELLPATH DATA (167 stations)												
MD [ft]	Inclination [°]	Azimuth [°]	TVD [ft]	Vert Sect [ft]	North [ft]	East [ft]	Grid East [US ft]	Grid North [US ft]	Latitude	Longitude	DLS [°/100ft]	Comments
14906.00	89.660	271.790	7856.69	6904.92	172.75	-6902.90	3234302.99	1693324.42	39°44'02.508"N	104°40'00.838"W	3.01	
15001.00	89.850	269.660	7857.09	6999.91	173.95	-6997.89	3234207.99	1693324.72	39°44'02.520"N	104°40'02.054"W	2.25	
15095.00	89.820	270.070	7857.36	7093.89	173.73	-7091.88	3234114.00	1693323.62	39°44'02.517"N	104°40'03.257"W	0.44	
15189.00	89.450	269.690	7857.96	7187.87	173.53	-7185.88	3234020.01	1693322.53	39°44'02.515"N	104°40'04.460"W	0.56	
15284.00	89.880	269.430	7858.52	7282.83	172.80	-7280.88	3233925.03	1693320.91	39°44'02.507"N	104°40'05.676"W	0.53	
15378.00	89.600	268.950	7858.94	7376.78	171.47	-7374.87	3233831.05	1693318.69	39°44'02.494"N	104°40'06.879"W	0.59	
15472.00	89.570	269.430	7859.62	7470.73	170.14	-7468.85	3233737.08	1693316.47	39°44'02.481"N	104°40'08.082"W	0.51	
15567.00	89.630	269.180	7860.29	7565.68	168.99	-7563.85	3233642.11	1693314.42	39°44'02.469"N	104°40'09.298"W	0.27	
15661.00	89.480	270.580	7861.02	7659.66	168.79	-7657.84	3233548.12	1693313.34	39°44'02.467"N	104°40'10.501"W	1.50	
15756.00	89.540	272.210	7861.83	7754.65	171.11	-7752.81	3233453.14	1693314.76	39°44'02.489"N	104°40'11.717"W	1.72	
15850.00	89.050	273.610	7862.99	7848.59	175.88	-7846.67	3233359.23	1693318.64	39°44'02.536"N	104°40'12.918"W	1.58	
15945.00	89.510	273.170	7864.18	7943.50	181.49	-7941.50	3233264.36	1693323.36	39°44'02.591"N	104°40'14.132"W	0.67	
16039.00	89.410	276.820	7865.07	8037.26	189.68	-8035.12	3233170.66	1693330.66	39°44'02.672"N	104°40'15.331"W	3.88	
16134.00	89.450	277.200	7866.01	8131.75	201.27	-8129.41	3233076.27	1693341.36	39°44'02.786"N	104°40'16.537"W	0.40	
16228.00	89.200	272.400	7867.12	8225.51	209.13	-8223.04	3232982.56	1693348.34	39°44'02.864"N	104°40'17.736"W	5.11	
16322.00	89.290	270.320	7868.36	8319.50	211.36	-8317.00	3232888.59	1693349.69	39°44'02.885"N	104°40'18.939"W	2.21	
16417.00	89.260	269.360	7869.56	8414.47	211.10	-8412.00	3232793.60	1693348.52	39°44'02.883"N	104°40'20.155"W	1.01	
16511.00	89.170	268.500	7870.85	8508.39	209.34	-8505.97	3232699.65	1693345.88	39°44'02.865"N	104°40'21.358"W	0.92	
16606.00	89.570	267.140	7871.89	8603.23	205.73	-8600.89	3232604.77	1693341.37	39°44'02.829"N	104°40'22.573"W	1.49	
16701.00	89.380	265.950	7872.76	8697.93	200.01	-8695.71	3232510.00	1693334.75	39°44'02.772"N	104°40'23.786"W	1.27	
16795.00	89.200	265.800	7873.93	8791.54	193.24	-8789.46	3232416.32	1693327.11	39°44'02.705"N	104°40'24.986"W	0.25	
16890.00	89.080	267.020	7875.36	8886.21	187.30	-8884.26	3232321.58	1693320.26	39°44'02.646"N	104°40'26.200"W	1.29	
16984.00	89.110	268.110	7876.84	8980.02	183.30	-8978.17	3232227.72	1693315.38	39°44'02.606"N	104°40'27.402"W	1.16	
17078.00	89.200	269.300	7878.23	9073.93	181.18	-9072.13	3232133.78	1693312.37	39°44'02.585"N	104°40'28.604"W	1.27	
17173.00	89.080	269.660	7879.65	9168.88	180.32	-9167.12	3232038.81	1693310.62	39°44'02.576"N	104°40'29.820"W	0.40	
17267.00	89.140	270.800	7881.11	9262.86	180.70	-9261.10	3231944.83	1693310.11	39°44'02.579"N	104°40'31.023"W	1.21	
17360.00	89.200	271.590	7882.46	9355.85	182.63	-9354.07	3231851.84	1693311.17	39°44'02.598"N	104°40'32.213"W	0.85	
17455.00	89.010	271.000	7883.94	9450.84	184.78	-9449.04	3231756.86	1693312.42	39°44'02.619"N	104°40'33.429"W	0.65	
17549.00	89.230	270.330	7885.39	9544.82	185.87	-9543.02	3231662.88	1693312.62	39°44'02.629"N	104°40'34.632"W	0.75	
17644.00	89.140	269.150	7886.74	9639.79	185.44	-9638.00	3231567.90	1693311.29	39°44'02.625"N	104°40'35.848"W	1.25	
17738.00	89.200	267.790	7888.10	9733.68	182.93	-9731.96	3231473.97	1693307.90	39°44'02.600"N	104°40'37.050"W	1.45	LAST BHGE MWD SURVEY
17762.00	89.200	267.790	7888.44	9757.64	182.01	-9755.94	3231450.00	1693306.74	39°44'02.590"N	104°40'37.357"W	0.00	PROJECTION TO BIT

HOLE & CASING SECTIONS - Ref Wellbore: PROPERTY RESERVE #4-65 3-4 2CH AWB Ref Wellpath: PROPERTY RESERVE #4-65 3-4 2CH AWP									
String/Diameter	Start MD [ft]	End MD [ft]	Interval [ft]	Start TVD [ft]	End TVD [ft]	Start N/S [ft]	Start E/W [ft]	End N/S [ft]	End E/W [ft]
9.625in Casing Surface	25.00	2195.00	2170.00	25.00	2194.98	0.00	0.00	1.75	5.42
8.75in Open Hole	2195.00	17762.00	15567.00	2194.98	7888.44	1.75	5.42	182.01	-9755.94
5.5in Casing Production	25.00	17762.00	17737.00	25.00	7888.44	0.00	0.00	182.01	-9755.94



Actual Wellpath Report

PROPERTY RESERVE #4-65 3-4 2CH AWP

Page 6 of 7



REFERENCE WELLPATH IDENTIFICATION			
Operator	BURLINGTON RESOURCES	Slot	SLOT#02 PROPERTY RESERVE #4-65 3-4 2CH (2308'FNL & 465'FEL, SEC.03)
Area	COLORADO	Well	PROPERTY RESERVE #4-65 3-4 2CH
Field	ARAPAHOE COUNTY (NAD83/TN)	Wellbore	PROPERTY RESERVE #4-65 3-4 2CH AWB
Facility	SEC.03-T04S-R65W		

TARGETS								
Name	TVD [ft]	North [ft]	East [ft]	Grid East [US ft]	Grid North [US ft]	Latitude	Longitude	Shape
SEC.03-T04S-R65W	0.00	0.00	39.84	3241247.02	1693217.22	39°44'00.810"N	104°38'31.970"W	polygon
SEC.04-T04S-R65W	0.00	0.00	39.84	3241247.02	1693217.22	39°44'00.810"N	104°38'31.970"W	polygon
PROPERTY RESERVE #4-65 3-4 2CH LP ON PLAT REV-1 (2165'FNL & 613'FEL, SEC.03)	7774.00	143.68	-147.66	3241058.17	1693359.13	39°44'02.230"N	104°38'34.370"W	point
PROPERTY RESERVE #4-65 3-4 2CH BHL ON PLAT REV-1 (2165'FNL & 325'FWL, SEC.04)	7886.00	189.07	-9785.06	3231420.81	1693313.53	39°44'02.660"N	104°40'37.730"W	point
SEC.04-T04S-R65W HARDLINE (325'FWL)	7952.00	0.00	39.84	3241247.02	1693217.22	39°44'00.810"N	104°38'31.970"W	polygon

WELLPATH COMPOSITION - Ref Wellbore: PROPERTY RESERVE #4-65 3-4 2CH AWB					Ref Wellpath: PROPERTY RESERVE #4-65 3-4 2CH AWP	
Start MD [ft]	End MD [ft]	Positional Uncertainty Model	Log Name/Comment		Wellbore	
25.00	2155.00	Gyrodata relative depth - Drop gyro or Multi-shot	GYRODATA SURFACE SURVEYS PROVIDED BY COP <99 - 2155>		PROPERTY RESERVE #4-65 3-4 2CH AWB	
2155.00	17738.00	BHI AutoTrak Curve (IFR1, Short)	BHGE AUTOTRAK CURVE (IFR1, SHORT) MONOBORE <2155 - 17738>		PROPERTY RESERVE #4-65 3-4 2CH AWB	
17738.00	17762.00	Blind Drilling (std)	Projection to bit		PROPERTY RESERVE #4-65 3-4 2CH AWB	

BURLINGTON
RESOURCES

Actual Wellpath Report
PROPERTY RESERVE #4-65 3-4 2CH AWP
Page 7 of 7



REFERENCE WELLPATH IDENTIFICATION

Operator	BURLINGTON RESOURCES	Slot	SLOT#02 PROPERTY RESERVE #4-65 3-4 2CH (2308'FNL & 465'FEL, SEC.03)
Area	COLORADO	Well	PROPERTY RESERVE #4-65 3-4 2CH
Field	ARAPAHOE COUNTY (NAD83/TN)	Wellbore	PROPERTY RESERVE #4-65 3-4 2CH AWP
Facility	SEC.03-T04S-R65W		

WELLPATH COMMENTS

MD [ft]	Inclination [°]	Azimuth [°]	TVD [ft]	Comment
2155.00	0.190	60.160	2154.98	TIE ON SURVEY
2257.00	0.030	26.990	2256.98	FIRST BHGE MWD SURVEY
17738.00	89.200	267.790	7888.10	LAST BHGE MWD SURVEY
17762.00	89.200	267.790	7888.44	PROJECTION TO BIT