

HALLIBURTON

iCem[®] Service

CONOCO/PHILLIPS COMPANY EBUSINESS

Date: Tuesday, December 04, 2018

Property Reserve 4-65 3-4 2AH Surface

Job Date: Saturday, November 10, 2018

Sincerely,
Tyler Hill

Legal Notice

Disclaimer:

All information in this report is provided subject to the terms and conditions which govern the services provided by Halliburton. Halliburton personnel use their best efforts in gathering information and their best judgment in interpreting it, but any interpretation, research, analysis or recommendation furnished by Halliburton are opinions based upon inferences from measurements and empirical relationships and assumptions, which inferences and empirical relationships and assumptions are not infallible, and with respect to which professionals in the industry may differ. iCem 3D Displacement results are used to understand how fluids intermix during a cement job. Simulation and 3D displacement results are not intended as and should not be used as a replacement for bond logs in determining top of cement. Current 3D model calculations are known to model more volume than the input volume for standard cases due to known calculation improvements required. For rotational cases, the modeled volume will be impacted by the same calculations impacting the standard cases, as well as additional constraints imposed to make the calculation time required operationally feasible. Therefore, until further notice, 3D displacement results should not be used for replacement of a bond log, or used as an identifier of top of cement. HALLIBURTON IS UNABLE TO GUARANTEE THE ACCURACY OF ANY CHART INTERPRETATION, RESEARCH ANALYSIS, OR JOB RECOMMENDATION and any interpretation or recommendation is not for use of or reliance upon by any third party. The customer has full responsibility for any of its decisions which are based on the information provided in this report.

Table of Contents

1.0 Cementing Job Summary – Surface 4

 1.1 Executive Summary4

2.0 Real-Time Job Summary – Surface..... 10

 2.1 Job Event Log10

3.0 Attachments – Surface..... 12

 3.1 Property Reserve 4-65 3-4 2AH Surface.png12

4.0 Cementing Job Summary - Production 13

5.0 Real-Time Job Summary - Production..... 20

 5.1 Job Event Log20

6.0 Attachments - Production..... 22

 6.1 Property Reserve 4-65 3-4 2AH Production.png22

1.0 Cementing Job Summary – Surface

1.1 Executive Summary

Halliburton appreciates the opportunity to perform the cementing services on the **Property Reserve 4-65 3-4 2AH** cement **Surface** casing job. A pre-job safety meeting was held before the job where details of the job were discussed, potential safety hazards were reviewed, and environmental compliance procedures were outlined.

Approximately 123 bbls of cement were returned to surface

Halliburton maintains a continuous quality improvement process and appreciates any comments or suggestions that you may have. Halliburton again thanks you for the opportunity to perform service work on this well. We hope to be your solutions provider for future projects.

Respectfully,

Halliburton Ft. Lupton

The Road to Excellence Starts with Safety

Sold To #: 352431		Ship To #: 3898715		Quote #: 0022508439		Sales Order #: 0905255104					
Customer: CONOCO/PHILLIPS COMPANY-EBUS				Customer Rep: AARON NEGUSSE							
Well Name: PROPERTY RESERVE 4-65 3-4			Well #: 2AH		API/UWI #: 05-005-07378-00						
Field: WILDCAT		City (SAP): WATKINS		County/Parish: ARAPAHOE		State: COLORADO					
Legal Description: SE NE-3-4S-65W-2308FNL-545FEL											
Contractor:				Rig/Platform Name/Num: Nabors B16							
Job BOM: 7521 7521											
Well Type: HORIZONTAL OIL											
Sales Person: HALAMERICA\HB41307				Srv Supervisor: Vitali Neverdasov							
Job											
Formation Name											
Formation Depth (MD)		Top		Bottom							
Form Type				BHST							
Job depth MD		2161ft		Job Depth TVD		2171					
Water Depth				Wk Ht Above Floor							
Perforation Depth (MD)		From		To							
Well Data											
Description	New / Used	Size in	ID in	Weight lbm/ft	Thread	Grade	Top MD ft	Bottom MD ft	Top TVD ft	Bottom TVD ft	
Casing		16	15.25				0	100			
Casing	0	9.625	8.921	36	STC	J-55	0	2161	0	2161	
Open Hole Section			13.5				100	2171	0	2171	
Tools and Accessories											
Type	Size in	Qty	Make	Depth ft		Type	Size in	Qty	Make		
Guide Shoe	9.625					Top Plug	9.625	1	HES		
Float Shoe	9.625	1	N/A	2161		Bottom Plug	9.625	1	HES		
Float Collar	9.625	1	N/A	2115		SSR plug set	9.625				
Insert Float	9.625					Plug Container	9.625	1	HES		
Stage Tool	9.625					Centralizers	9.625	18	HES		
Fluid Data											
Stage/Plug #: 1											
Fluid #	Stage Type	Fluid Name			Qty	Qty UoM	Mixing Density lbm/gal	Yield ft3/sack	Mix Fluid Gal	Rate bbl/min	Total Mix Fluid Gal
1	10 lb/gal Tuned Spacer III	Tuned Spacer III			50	bbl	10	8.97		4	
38.40 gal/bbl		FRESH WATER									
62.54 lbm/bbl		BARITE, BULK (100003681)									

Fluid #	Stage Type	Fluid Name	Qty	Qty UoM	Mixing Density lbm/gal	Yield ft3/sack	Mix Fluid Gal	Rate bbl/min	Total Mix Fluid Gal
2	SwiftCem	SWIFTCEM (TM) SYSTEM	600	sack	12	2.564		8	15.12
94 lbm		TYPE I / II CEMENT, BULK (101439798)							
Fluid #	Stage Type	Fluid Name	Qty	Qty UoM	Mixing Density lbm/gal	Yield ft3/sack	Mix Fluid Gal	Rate bbl/min	Total Mix Fluid Gal
3	SwiftCem	SWIFTCEM (TM) SYSTEM	255	sack	14.2	1.59		6	7.9
94 lbm		CMT - PREMIUM - CLASS G REG OR TYPE V, BULK (100003685)							
Fluid #	Stage Type	Fluid Name	Qty	Qty UoM	Mixing Density lbm/gal	Yield ft3/sack	Mix Fluid Gal	Rate bbl/min	Total Mix Fluid Gal
4	Displacement	Displacement	163	bbl	8.33			7	
Cement Left In Pipe		Amount	43 ft		Reason			Shoe Joint	
Comment : 123 BBLS OF CEMENT BACK TO SURFACE. ESTIMATED TOP OF TAIL @1332'									

HALLIBURTON

Rockies, Brighton

Lab Results- Lead

Job Information

Request/Slurry	2512425/2	Rig Name	Nabors B16	Date	01/NOV/2018
Submitted By	Justin Lansdale	Job Type	Surface Casing	Bulk Plant	Brighton
Customer	ConocoPhillips	Location		Well	Property Reserve 4-65 3-4 2AH

Well Information

Casing/Liner Size	9.625 in	Depth MD	2144 ft	BHST	35°C / 95°F
Hole Size	13.5 in	Depth TVD	2144 ft	BHCT	34°C / 93°F
Pressure	1279 psi				

Cement Information - Lead Design

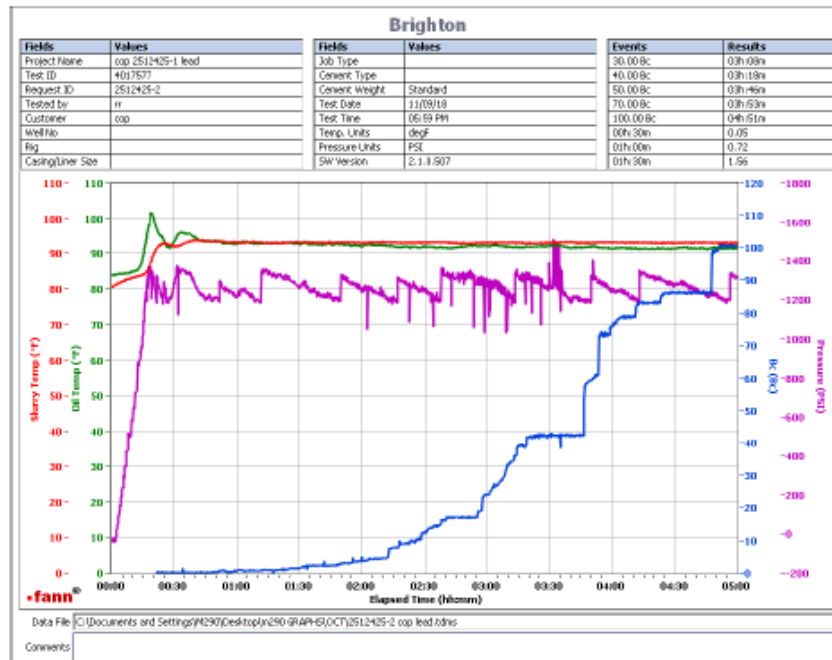
Conc	UOM	Cement/Additive	MP	Sample Type	Sample Date	Lot No.	Cement Properties		
100	% BWOC	Cemex Type I-II		Bulk Blend	09.11.18	FB23	Slurry Density	12	lbm/gal
15.14	gal/sack	Field (Fresh) Water		Lab	09.10.18	8/19/2018	Slurry Yield	2.57	ft ³ /sack
2	% BWOC	Cal-Seal 60	PB	Bulk Blend	09.11.18		Water Requirement	15.14	gal/sack
2.3	% BWOC	Econolite (Powder - PB)	PB	Bulk Blend	09.11.18				
0.2	% BWOC	VERSASET (PB)	PB	Bulk Blend	09.11.18				
6	lb/sk	Mountain Enhancer 923	PB	Bulk Blend	09.11.18				

Operation Test Results Request ID 2512425/2

Thickening Time, Request Test ID:35968683

09/NOV/2018

Temp (degF)	Pressure (psi)	Reached in (min)	Start BC	30 Bc (hh:mm)	40 Bc (hh:mm)	50 Bc (hh:mm)	70 Bc (hh:mm)	100 Bc (hh:mm)
93	1279	18	12	3:08	3:18	3:46	3:53	4:51



This report is the property of Halliburton Energy Services and neither it nor any part thereof, nor a copy thereof, is to be published or disclosed without first securing the expressed written approval of Halliburton. It may however be used in the course of regular business operations by any person or concern receiving such report from Halliburton. This report is for information purposes only and the content is limited to the sample described. Halliburton makes no warranties, expressed or implied, as to the accuracy of the contents or results. Any user of this report agrees Halliburton shall not be liable for any loss or damage regardless of cause, including any act or omission of Halliburton, resulting from the use hereof.

HALLIBURTON

Rockies, Brighton

Lab Results- Tail

Job Information

Request/Slurry	2512426/1	Rig Name	Nabors B16	Date	01/NOV/2018
Submitted By	Justin Lansdale	Job Type	Surface Casing	Bulk Plant	Brighton
Customer	ConocoPhillips	Location		Well	Property Reserve 4-65 3-4 2AH

Well Information

Casing/Liner Size	9.625 in	Depth MD	2150 ft	BHST	35°C / 95°F
Hole Size	13.5 in	Depth TVD	2150 ft	BHCT	34°C / 93°F
Pressure	1279 psi				

Cement Information - Tail Design

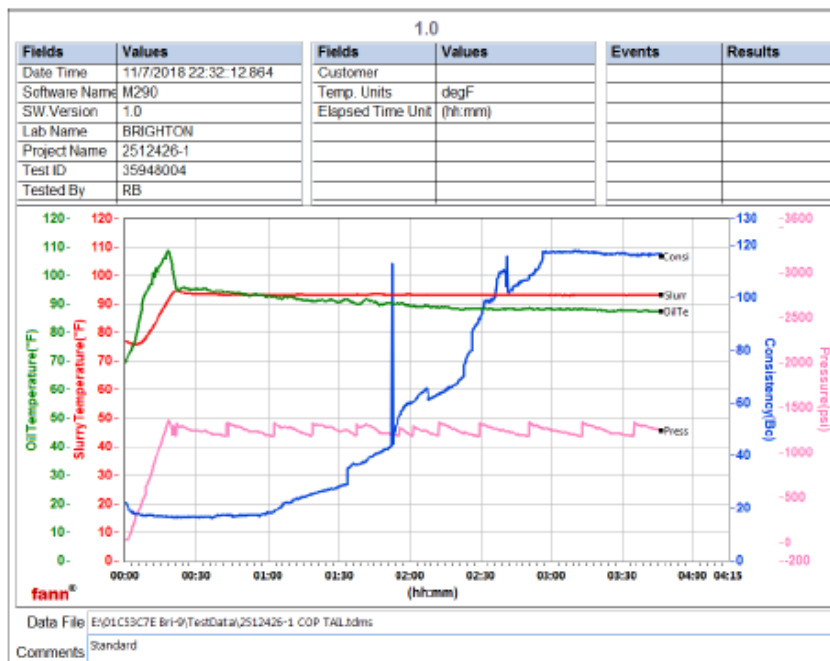
Conc	UOM	Cement/Additive	MP	Sample Type	Sample Date	Lot No.	Cement Properties	
100	% BWOC	Mountain G		Bulk Blend	08.11.18	CoP T	Slurry Density	14.2 lbm/gal
7.9	gal/sack	Field (Fresh) Water		Lab	09.10.18	8/19/2018	Slurry Yield	1.59 ft3/sack
2	% BWOC	Cal-Seal 60	PB	Bulk Blend	08.11.18		Water Requirement	7.9 gal/sack
1.3	% BWOC	Econolite (Powder - PB)	PB	Bulk Blend	08.11.18	u082018		
0.2	% BWOC	VERSASET (PB)	PB	Bulk Blend	08.11.18	2018-7-1		
6	lb/sk	Mountain Enhancer 923	PB	Bulk Blend	08.11.18			

Operation Test Results Request ID 2512426/1

Thickening Time, Request Test ID:35948004

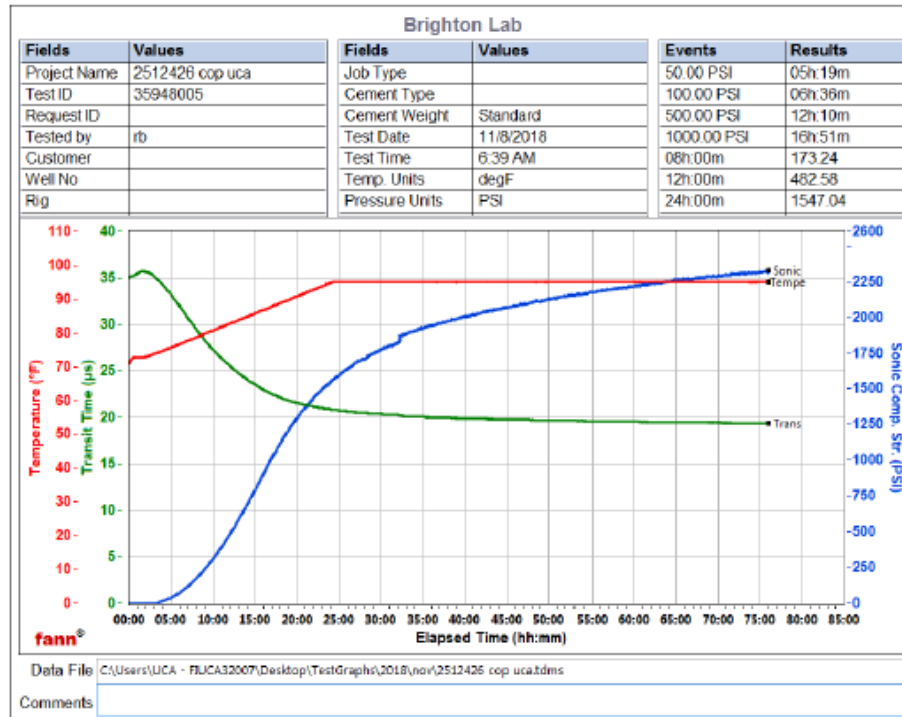
08/NOV/2018

Temp (degF)	Pressure (psi)	Reached in (min)	Start BC	30 Bc (hh:mm)	40 Bc (hh:mm)	50 Bc (hh:mm)	70 Bc (hh:mm)	100 Bc (hh:mm)
93	1279	18	22	1:34	1:43	1:53	2:23	2:36



This report is the property of Halliburton Energy Services and neither it nor any part thereof, nor a copy thereof, is to be published or disclosed without first securing the expressed written approval of Halliburton. It may however be used in the course of regular business operations by any person or concern receiving such report from Halliburton. This report is for information purposes only and the content is limited to the sample described. Halliburton makes no warranties, expressed or implied, as to the accuracy of the contents or results. Any user of this report agrees Halliburton shall not be liable for any loss or damage regardless of cause, including any act or omission of Halliburton, resulting from the use hereof.

UCA Comp. Strength, Request Test ID:35948005											11/NOV/2018
End Temp (degF)	Pressure (psi)	50 psi (hh:mm)	100 psi (hh:mm)	500 psi (hh:mm)	1000 psi(hh:mm)	8hr CS (psi)	12 hr CS (psi)	24 hr CS (psi)	48 hr CS (psi)	End CS (psi)	End Time (hrs)
95	1000	5:19	6:36	12:10	16:51	173.2	482	1547	2104	2303	72



This report is the property of Halliburton Energy Services and neither it nor any part thereof, nor a copy thereof, is to be published or disclosed without first securing the expressed written approval of Halliburton. It may however be used in the course of regular business operations by any person or concern receiving such report from Halliburton. This report is for information purposes only and the content is limited to the sample described. Halliburton makes no warranties, expressed or implied, as to the accuracy of the contents or results. Any user of this report agrees Halliburton shall not be liable for any loss or damage regardless of cause, including any act or omission of Halliburton, resulting from the use hereof.

2.0 Real-Time Job Summary – Surface

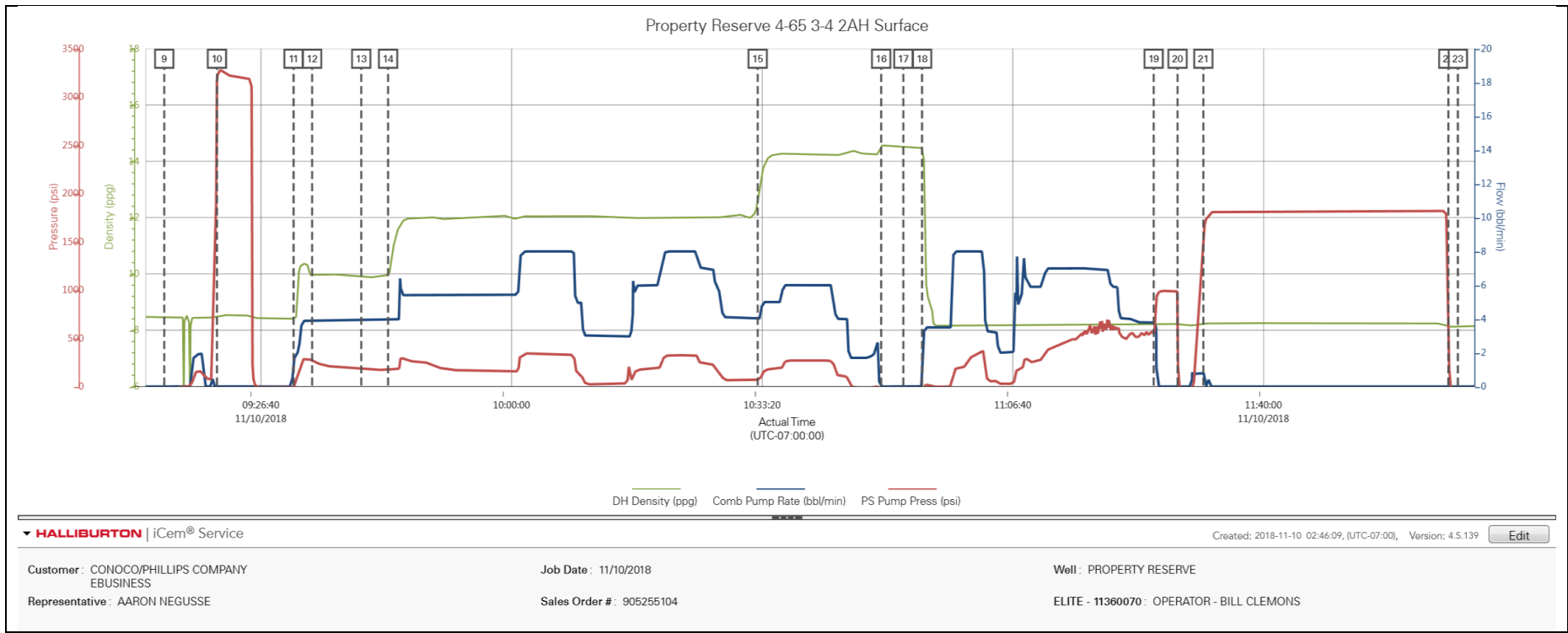
2.1 Job Event Log

Type	Seq. No.	Activity	Graph Label	Date	Time	Source	DH Density (ppg)	Comb Pump Rate (bbl/min)	PS Pump Press (psi)	Comments
Event	1	Depart from Service Center or Other Site	Depart from Service Center or Other Site	11/9/2018	00:10:00	USER				Called Journey
Event	2	Casing on Bottom	Casing on Bottom	11/9/2018	06:30:00	USER				Landing joint brought to floor and landed
Event	3	Call Out	Call Out	11/9/2018	19:00:00	USER				For Location @ 01:00
Event	4	Arrive at Location from Service Center	Arrive at Location from Service Center	11/10/2018	00:58:00	USER				31 MILES. DISCUSS NUMBERS AND PROCEDURE WITH CUSTOMER. RIG IS RUNNING CASING.
Event	5	Safety Meeting - Pre Rig-Up	Safety Meeting - Pre Rig-Up	11/10/2018	02:15:00	USER				JSA to discuss the hazards of rig-up
Event	6	Rig-Up Equipment	Rig-Up Equipment	11/10/2018	02:20:00	USER				Rig-up all surface lines and equipmnet up to the Buffer zone
Event	7	Circulate Well	Circulate Well	11/10/2018	07:00:00	USER				RIG UP CEMENT HEAD AND MANIFOLD FOR RIG TO CIRCULATE.
Event	8	Pre-Job Safety Meeting	Pre-Job Safety Meeting	11/10/2018	08:48:00	USER	8.47	0.00	-63.00	With all Personall, to discuss the hazards of pumping the job, and pump schedule.
Event	9	Start Job	Start Job	11/10/2018	09:13:48	COM4	8.48	0.00	-88.00	
Event	10	Test Lines	Test Lines	11/10/2018	09:20:49	USER	8.47	0.00	3176.00	Load line and Test @ 3207 psi
Event	11	Pump Spacer	Pump Spacer	11/10/2018	09:31:00	USER	8.41	1.70	-11.00	BATCH/ WEIGHT/ PUMP 50 BBLs OF SPACER @ 10 PPG.

Event	12	Check Weight	Check Weight	11/10/2018	09:33:28	COM4	9.95	3.90	259.00	
Event	13	Drop Bottom Plug	Drop Bottom Plug	11/10/2018	09:40:00	USER	9.92	3.90	184.00	DROP BOTTOM PLUG ON THE FLY @ 46 BBLS SPACER
Event	14	Pump Lead Cement	Pump Lead Cement	11/10/2018	09:43:34	USER	9.97	3.90	172.00	BATCH/ WEIGHT/PUMP 600 sks (273.6 bbls) of Lead Swiftcem @ 12.0 ppg, verified with pressurized scales
Event	15	Pump Tail Cement	Pump Tail Cement	11/10/2018	10:32:44	USER	12.70	4.10	71.00	BATCH/WEIGHT/PUMP 255 SKS (72.2 BBLS) OF TAIL CEMENT @ 14.2 PPG.
Event	16	Shutdown	Shutdown	11/10/2018	10:49:09	USER	14.58	0.00	-45.00	Finished pumping cement
Event	17	Drop Top Plug	Drop Top Plug	11/10/2018	10:52:06	USER	14.49	0.00	-55.00	Pre-loaded top plug in plug container verified by customer rep.
Event	18	Pump Displacement - Start	Pump Displacement - Start	11/10/2018	10:54:35	USER	14.48	0.00	-54.00	163.5 bbls fresh water. Washing up on top of the plug.
Event	19	Bump Plug	Bump Plug	11/10/2018	11:25:24	USER	8.19	3.80	547.00	With 500 psi over final circulating pressure of 637 psi
Event	20	Check Floats	Check Floats	11/10/2018	11:28:34	USER	8.22	0.00	980.00	Floats held. 1.5 bbls back
Event	21	Event	Event	11/10/2018	11:32:00	USER	8.24	0.80	1496.00	PRESSURE UP 1800 PSI FOR 30 MIN CASING TEST.
Event	22	Event	Event	11/10/2018	12:04:35	USER	8.13	0.00	984.00	BLEED OFF PRESSURE.
Event	23	End Job	End Job	11/10/2018	12:05:51	COM4	8.14	0.00	-76.00	
Event	24	Pre-Rig Down Safety Meeting	Pre-Rig Down Safety Meeting	11/10/2018	12:12:00	USER	8.16	0.00	-78.00	JSA to discuss the hazards of rig-down

3.0 Attachments – Surface

3.1 Property Reserve 4-65 3-4 2AH Surface.png



4.0 Cementing Job Summary - Production

4.1 Executive Summary

Halliburton appreciates the opportunity to perform the cementing services on the **Property Reserve 4-65 3-4 2AH** cement **Production** casing job. A pre-job safety meeting was held before the job where details of the job were discussed, potential safety hazards were reviewed, and environmental compliance procedures were outlined.

Approximately 33 bbls of spacer were returned to surface.

Halliburton maintains a continuous quality improvement process and appreciates any comments or suggestions that you may have. Halliburton again thanks you for the opportunity to perform service work on this well. We hope to be your solutions provider for future projects.

Respectfully,

Halliburton Ft. Lupton

The Road to Excellence Starts with Safety

Sold To #: 352431		Ship To #: 3898715		Quote #: 0022508345		Sales Order #: 0905275409				
Customer: CONOCO/PHILLIPS COMPANY-EBUS				Customer Rep: JASON BEACH						
Well Name: PROPERTY RESERVE 4-65 3-4			Well #: 2AH		API/UWI #: 05-005-07378-00					
Field: WILDCAT		City (SAP): WATKINS		County/Parish: ARAPAHOE		State: COLORADO				
Legal Description: SE NE-3-4S-65W-2308FNL-545FEL										
Contractor:				Rig/Platform Name/Num: Nabors B16						
Job BOM: 7523 7523										
Well Type: HORIZONTAL OIL										
Sales Person: HALAMERICA\HB41307				Srvc Supervisor: Vitali Neverdasov						
Job										
Formation Name										
Formation Depth (MD)		Top		Bottom						
Form Type				BHST						
Job depth MD		17571ft		Job Depth TVD		7771				
Water Depth				Wk Ht Above Floor						
Perforation Depth (MD)		From		To						
Well Data										
Description	New / Used	Size in	ID in	Weight lbm/ft	Thread	Grade	Top MD ft	Bottom MD ft	Top TVD ft	Bottom TVD ft
Casing	0	9.625	8.921	36	STC	J-55	0	2161	0	2161
Casing	0	5.5	4.67	23	TXP-BTC	P-110	0	17571	0	7771
Open Hole Section			8.5				2161	17595	2161	7771
Tools and Accessories										
Type	Size in	Qty	Make	Depth ft		Type	Size in	Qty	Make	
Guide Shoe	5.5					Top Plug	5.5	1	INNOVEX	
Float Shoe	5.5	1	N/A	17571		Bottom Plug	5.5	2	INNOVEX	
Float Collar	5.5	1	N/A	17482		SSR plug set	5.5			
Insert Float	5.5					Plug Container	5.5	1	HES	
Stage Tool	5.5					Centralizers	5.5			
Fluid Data										
Stage/Plug #: 1										
Fluid #	Stage Type	Fluid Name	Qty	Qty UoM	Mixing Density lbm/gal	Yield ft3/sack	Mix Fluid Gal	Rate bbl/min	Total Mix Fluid Gal	
1	10.5 lb/gal Tuned Spacer III	Tuned Spacer III	60	bbl	10.5	6.7		6		
0.70 gal/bbl		MUSOL(R) A, 5 GAL PAIL (100064220)								
0.10 gal/bbl		D-AIR 3000L, 5 GAL PAIL (101007444)								

37.58 gal/bbl		FRESH WATER							
83.48 lbm/bbl		BARITE, BULK (100003681)							
0.70 gal/bbl		DUAL SPACER SURFACTANT B, 5 GAL PAIL (100003665)							
Fluid #	Stage Type	Fluid Name	Qty	Qty UoM	Mixing Density lbm/gal	Yield ft3/sack	Mix Fluid Gal	Rate bbl/min	Total Mix Fluid Gal
2	ElastiCem	ELASTICEM (TM) SYSTEM	820	sack	13.2	1.57		8	7.54
Fluid #	Stage Type	Fluid Name	Qty	Qty UoM	Mixing Density lbm/gal	Yield ft3/sack	Mix Fluid Gal	Rate bbl/min	Total Mix Fluid Gal
3	EconoCem	ECONOCEM (TM) SYSTEM	1525	sack	13.5	1.79		8	8.73
Fluid #	Stage Type	Fluid Name	Qty	Qty UoM	Mixing Density lbm/gal	Yield ft3/sack	Mix Fluid Gal	Rate bbl/min	Total Mix Fluid Gal
4	MMCR Displacement	MMCR Displacement	40	bbl	8.34			8	
0.50 gal/bbl		MICRO MATRIX CEMENT RETARDER, 5 GAL PAIL (100003781)							
Fluid #	Stage Type	Fluid Name	Qty	Qty UoM	Mixing Density lbm/gal	Yield ft3/sack	Mix Fluid Gal	Rate bbl/min	Total Mix Fluid Gal
5	Water	Water	330	bbl	8.33			8	
Cement Left In Pipe		Amount	89 ft		Reason			Shoe Joint	
Comment : 33 BBLs OF SPACER BACK TO SURFACE. ESTIMATED TOP OF LEAD @ 354'. TOP OF TAIL @ 5655'.									

HALLIBURTON

Rockies, Brighton

Lab Results- Lead

Job Information

Request/Slurry	2514657/2	Rig Name	Nabors B16	Date	12/NOV/2018
Submitted By	Tyler Hill	Job Type	Production Casing	Bulk Plant	Brighton
Customer	ConocoPhillips	Location	Weld	Well	Property Reserve 4-65 3-4 2AH

Well Information

Casing/Liner Size	5.5 in	Depth MD	17903 ft	BHST	104°C / 219°F
Hole Size	8.5 in	Depth TVD	7884 ft	BHCT	104°C / 219°F
Pressure	4554 psi				

Cement Information - Lead Design

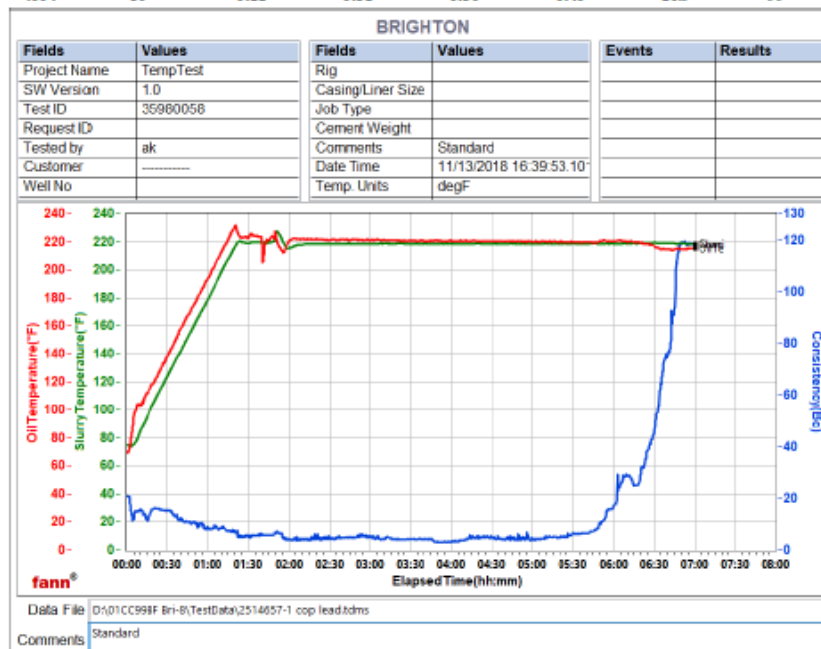
Conc	UOM	Cement/Additive	MP	Sample Type	Sample Date	Lot No.	Cement Properties		
100	% BWOC	Cement Blend					Slurry Density	13.2	lbm/gal
7.54	gal/sack	Field (Fresh) Water		Lab	09.10.18	8/19/2018	Slurry Yield	1.57	ft3/sack
5	lb/sk	WellLife 708 (PB)	PB	Bulk Blend	14.11.18	9.26.2018	Water Requirement	7.54	gal/sack
0.1	% BWOC	SA-1015 (PB)	PB	Bulk Blend	14.11.18	8e3445w			
0.35	% BWOC	SCR-100 (PB)	PB	Bulk Blend	14.11.18	ct18i45001			
1	lb/sk	Silicalite - Compacted	PB	Bulk Blend	14.11.18	6.27.2018			
0.2	% BWOC	HALAD-344 (PB)	PB	Bulk Blend	14.11.18	20180858			

Operation Test Results Request ID 2514657/2

Thickening Time - ON-OFF-ON, Request Test ID:35980058

14/NOV/2018

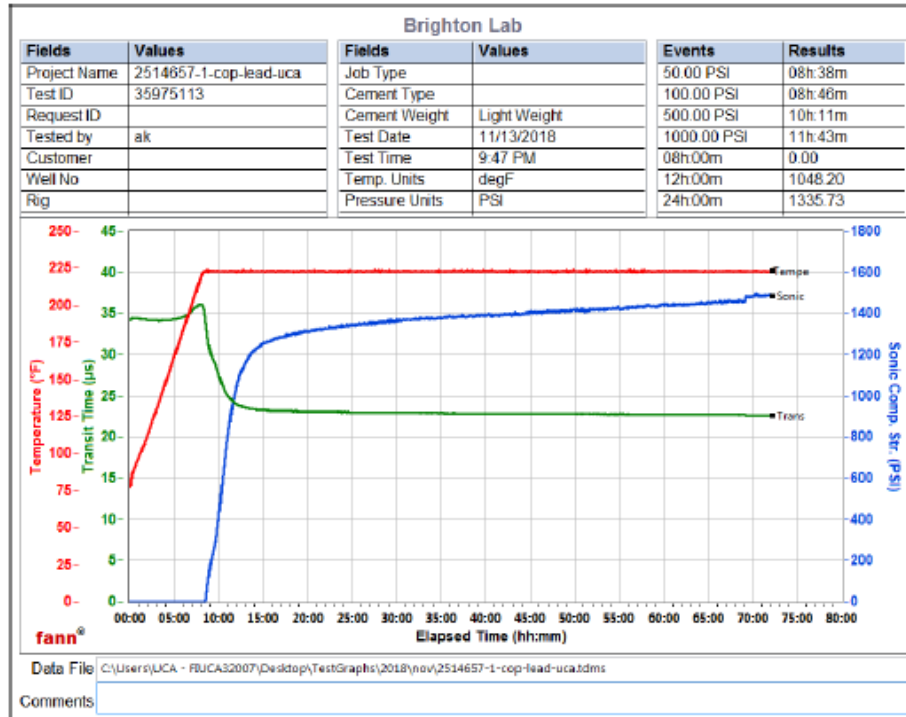
Test Temp (degF)	Pressure (psi)	Reached in (min)	30 Bc (hh:mm)	50 Bc (hh:mm)	70 Bc (hh:mm)	100 Bc (hh:mm)	Start Bc	Stirring before stop (mins)	Static Period (min)
219	4554	80	6:22	6:31	6:36	6:45	26.9	99	10



This report is the property of Halliburton Energy Services and neither it nor any part thereof, nor a copy thereof, is to be published or disclosed without first securing the expressed written approval of Halliburton. It may however be used in the course of regular business operations by any person or concern receiving such report from Halliburton. This report is for information purposes only and the content is limited to the sample described. Halliburton makes no warranties, expressed or implied, as to the accuracy of the contents or results. Any user of this report agrees Halliburton shall not be liable for any loss or damage regardless of cause, including any act or omission of Halliburton, resulting from the use hereof.

Operation Test Results Request ID 2514657/1**UCA Comp. Strength, Request Test ID:35975113****16/NOV/2018**

End Temp (degF)	Pressure (psi)	50 psi (hh:mm)	100 psi (hh:mm)	500 psi (hh:mm)	1000 psi(hh:mm m)	8hr CS (psi)	12 hr CS (psi)	16 hr CS (psi)	24 hr CS (psi)	48 hr CS (psi)	End CS (psi)	End Time (hrs)
223	800	8:38	8:46	10:11	11:43	0	1048	1269	1336	1413	1489	72



This report is the property of Halliburton Energy Services and neither it nor any part thereof, nor a copy thereof, is to be published or disclosed without first securing the expressed written approval of Halliburton. It may however be used in the course of regular business operations by any person or concern receiving such report from Halliburton. This report is for information purposes only and the content is limited to the sample described. Halliburton makes no warranties, expressed or implied, as to the accuracy of the contents or results. Any user of this report agrees Halliburton shall not be liable for any loss or damage regardless of cause, including any act or omission of Halliburton, resulting from the use hereof.

HALLIBURTON

Lab Results- Tail

Rockies, Brighton

Job Information

Request/Slurry	2514658/1	Rig Name	Nabors B16	Date	12/NOV/2018
Submitted By	Tyler Hill	Job Type	Production Casing	Bulk Plant	Brighton
Customer	ConocoPhillips	Location	Weld	Well	Property Reserve 4-65 3-4 2AH

Well Information

Casing/Liner Size	5.5 in	Depth MD	17903 ft	BHST	104°C / 219°F
Hole Size	8.5 in	Depth TVD	7884 ft	BHCT	104°C / 219°F
Pressure	4554 psi				

Cement Information - Tail Design

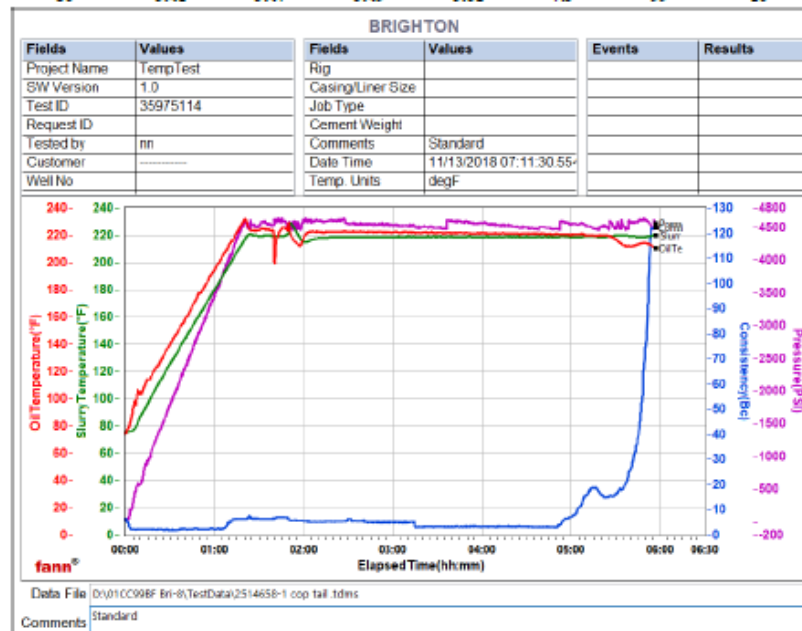
Conc	UOM	Cement/Additive	MP	Sample Type	Sample Date	Lot No.	Cement Properties		
100	% BWOC	Cement Blend					Slurry Density	13.5	lbm/gal
8.73	gal/sack	Field (Fresh) Water		Lab	09.10.18	8/19/2018	Slurry Yield	1.79	ft3/sack
25	% BWOC	SS-200 silica flour	PB	Bulk Blend	13.11.18		Water Requirement	8.73	gal/sack
0.1	% BWOC	SA-1015 (PB)	PB	Bulk Blend	13.11.18				
0.3	% BWOC	HR-5 (PB)	PB	Bulk Blend	13.11.18				
0.8	% BWOC	HALAD-344 (PB)	PB	Bulk Blend	13.11.18				
0.2	% BWOC	HALAD-413 (PB)	PB	Bulk Blend	13.11.18				

Operation Test Results Request ID 2514658/1

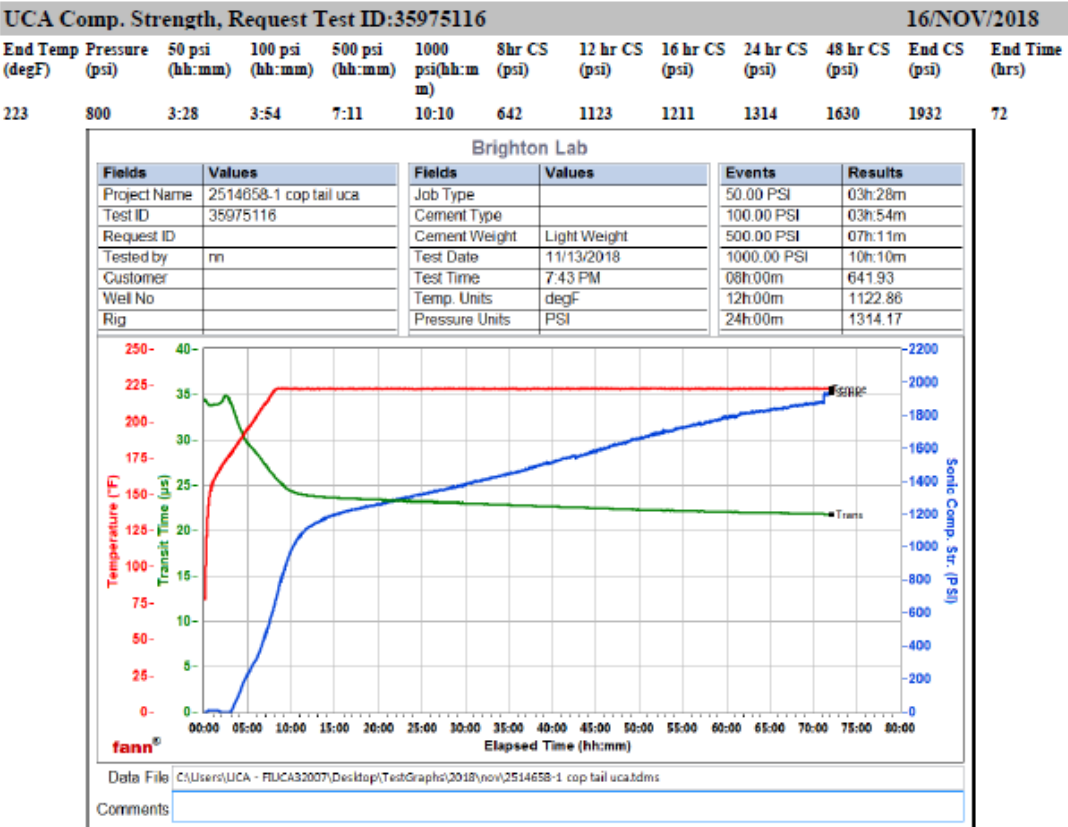
Thickening Time - ON-OFF-ON, Request Test ID:35975114

13/NOV/2018

Test Temp (degF)	Pressure (psi)	Reached in (min)	30 Bc (hh:mm)	50 Bc (hh:mm)	70 Bc (hh:mm)	100 Bc (hh:mm)	Start Bc	Stirring before stop (mins)	Static Period (min)	Peak reading (BC)
219	4554	80	5:41	5:47	5:49	5:52	7.5	99	10	6.2



This report is the property of Halliburton Energy Services and neither it nor any part thereof, nor a copy thereof, is to be published or disclosed without first securing the expressed written approval of Halliburton. It may however be used in the course of regular business operations by any person or concern receiving such report from Halliburton. This report is for information purposes only and the content is limited to the sample described. Halliburton makes no warranties, expressed or implied, as to the accuracy of the contents or results. Any user of this report agrees Halliburton shall not be liable for any loss or damage regardless of cause, including any act or omission of Halliburton, resulting from the use hereof.



This report is the property of Halliburton Energy Services and neither it nor any part thereof, nor a copy thereof, is to be published or disclosed without first securing the expressed written approval of Halliburton. It may however be used in the course of regular business operations by any person or concern receiving such report from Halliburton. This report is for information purposes only and the content is limited to the sample described. Halliburton makes no warranties, expressed or implied, as to the accuracy of the contents or results. Any user of this report agrees Halliburton shall not be liable for any loss or damage regardless of cause, including any act or omission of Halliburton, resulting from the use hereof.

5.0 Real-Time Job Summary - Production

5.1 Job Event Log

Type	Seq. No.	Activity	Graph Label	Date	Time	Source	DH Density (ppg)	Comb Pump Rate (bbl/min)	PS Pump Press (psi)	Comments
Event	1	Casing on Bottom	Casing on Bottom	11/17/2018	03:45:00	USER				Landing joint brought to floor and landed
Event	2	Circulate Well	Circulate Well	11/17/2018	04:00:00	USER				rig is circulating while cement crew is rigging up fir top out job
Event	3	Rig-Up Equipment	Rig-Up Equipment	11/17/2018	08:11:00	USER				RE SPOT PUMP TRUCK FROM PREVIOUS TOP OUT JOB AND RIG UP ALL LINES AND BULK EQUIPMENT
Event	4	Safety Meeting - Pre Rig-Up	Safety Meeting - Pre Rig-Up	11/17/2018	08:25:00	USER				JSA to discuss the hazards of rig-up
Event	5	Pre-Job Safety Meeting	Pre-Job Safety Meeting	11/17/2018	09:10:00	USER	0.09	0.00	1.00	With all essential personnel, to discuss the hazards of pumping the job, and pump schedule.
Event	6	Start Job	Start Job	11/17/2018	09:44:58	COM4	2.38	0.00	1.00	
Event	7	Test Lines	Test Lines	11/17/2018	09:52:00	USER	8.31	0.00	1800.00	LOAD LINE AND PRESSURE TEST 5384 PSI
Event	8	Pump Spacer	Pump Spacer	11/17/2018	10:02:00	USER	10.60	3.90	432.00	BATCH/ WEIGHT/ PUMP 60 BBLS OF TUNED SPACER @ 10.5 PPG
Event	9	Drop Bottom Plug	Drop Bottom Plug	11/17/2018	10:18:00	USER	9.99	0.00	-13.00	DROP BOTTOM PLUG 55 BBLS INTO SPACER.
Event	10	Pump Lead Cement	Pump Lead Cement	11/17/2018	10:22:31	USER	10.67	4.50	390.00	Batch/ weight/ pump 820 sks(229.3 bbls) Elasticem @ 13.2 ppg, verified with pressurized scales

Event	11	Pump Tail Cement	Pump Tail Cement	11/17/2018	10:56:00	USER	13.23	6.00	383.00	Weight/ pump 1525 sks(486.2 bbls) Econocem @ 13.5 ppg, verified with pressurized scales.
Event	12	Shutdown	Shutdown	11/17/2018	12:06:37	USER	13.69	0.00	-39.00	Wash pumps and lines.
Event	13	Drop Top Plug	Drop Top Plug	11/17/2018	12:14:00	USER	7.98	9.00	494.00	Load and drop top plug in plug container verified by customer rep.
Event	14	Pump Displacement - Start	Pump Displacement - Start	11/17/2018	12:17:00	USER	7.99	0.00	-65.00	370 bbls fresh water. First 40 bbls with MMCR. Remaining with aldicide.
Event	15	Bump Plug	Bump Plug	11/17/2018	13:11:52	USER	8.09	0.60	3728.00	BUMP PLUG WITH 1000 psi over final circulating pressure of 3120 psi.
Event	16	Check Floats	Check Floats	11/17/2018	13:16:04	USER	8.05	0.00	3403.00	Floats held. 4.5 bbls back
Event	17	End Job	End Job	11/17/2018	13:17:31	COM4	8.00	0.00	-64.00	
Event	18	Pre-Rig Down Safety Meeting	Pre-Rig Down Safety Meeting	11/17/2018	13:20:00	USER	7.98	0.00	-65.00	JSA to discuss the hazards of rig-down

6.0 Attachments - Production

6.1 Property Reserve 4-65 3-4 2AH Production.png

