

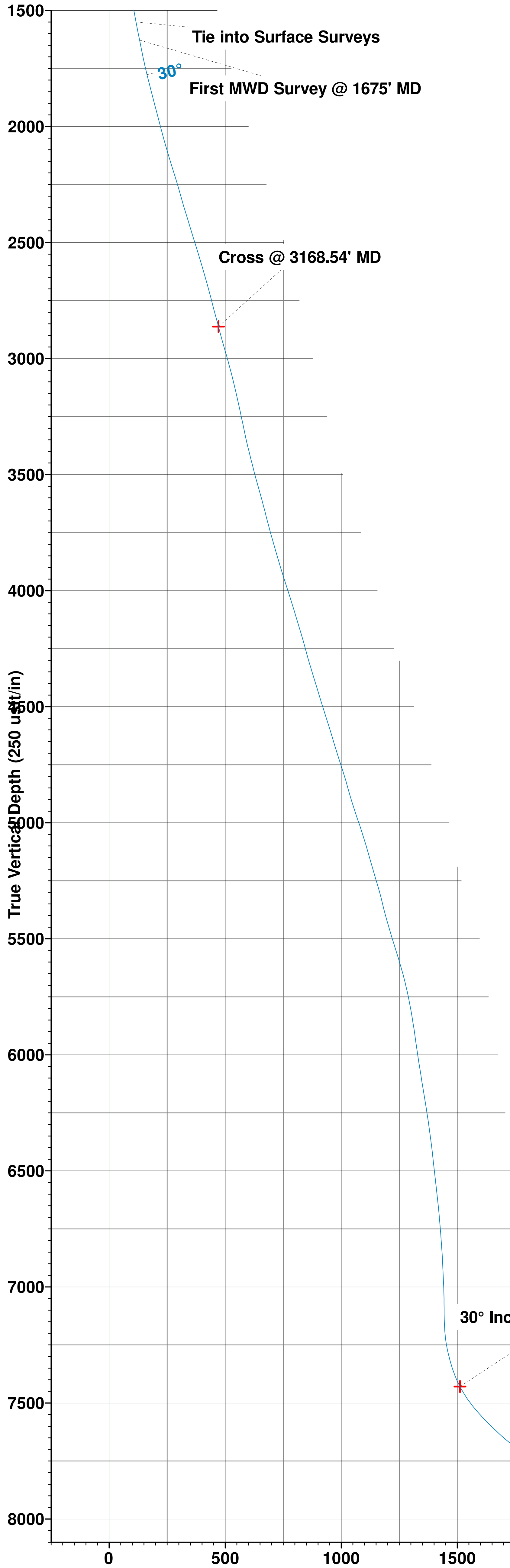


Extraction Oil & Gas
Project: Weld County, CO (NAD83)
Site: Sec 28-T1N-R68W Coyote Trails
Well: Coyote Trails 33W-15-9C
Wellbore: Wellbore #1
Design: Wellbore #1 (Coyote Trails 33W-15-9C/Wellbore #1)
Ensign 147

PROJECT DETAILS: Weld County, CO (NAD83)
Geodetic System: US State Plane 1983
Datum: North American Datum 1983
Ellipsoid: GRS 1980
Zone: Colorado Northern Zone
System Datum: Ground Level
Local North: True

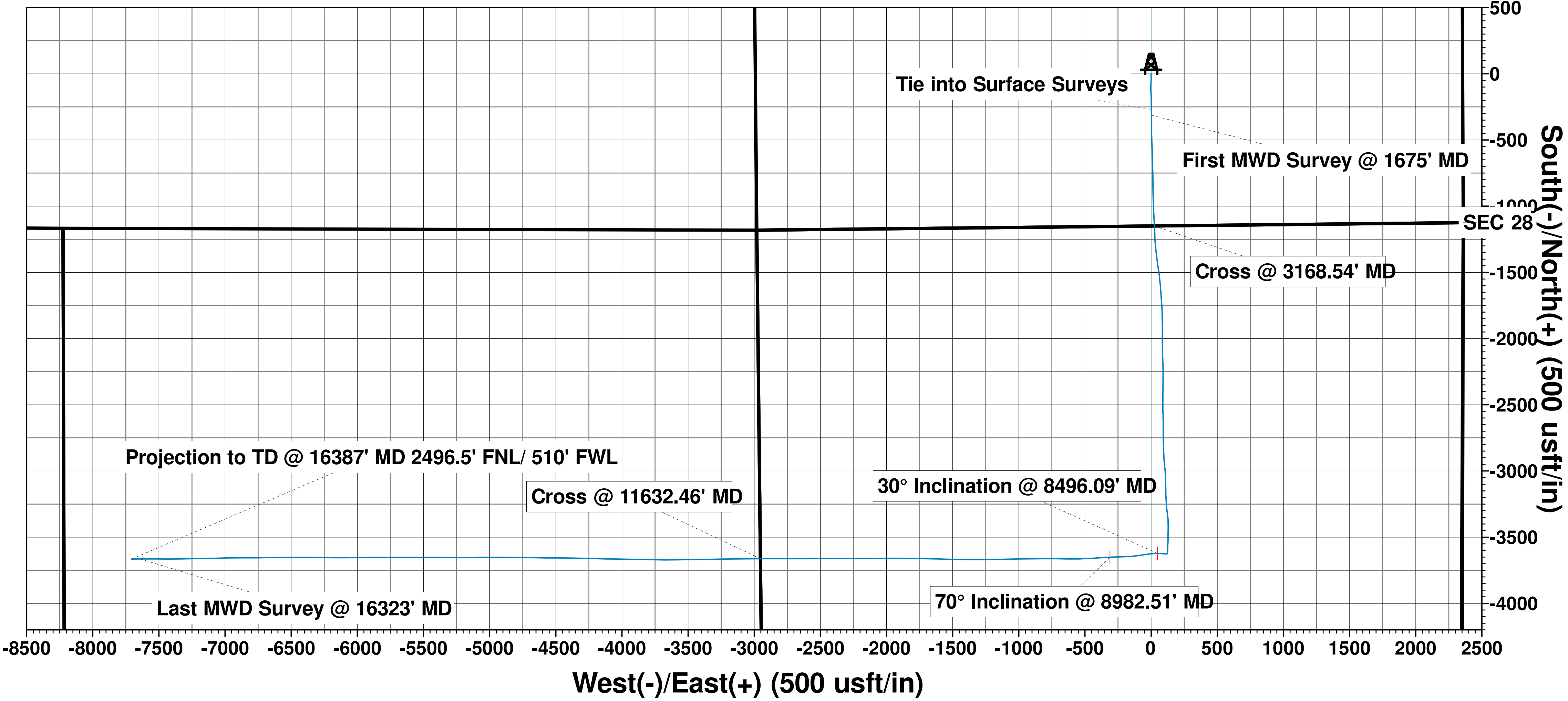


WELL DETAILS:		Coyote Trails 33W-15-9C	
Ground Elevation::	5274.00		
RKB Elevation:	KB @ 5302.00usft (Ensign 147)		
Rig Name:	Ensign 147		
		Northing	Easting
		1249778.81	3137945.84
		Latitude	Longitude
		40.017978	-105.007474



ANNOTATIONS								
MD	Inc	Azi	TVD	+N/-S	+E/-W	VSect	Departure	Annotation
1588.30	25.14	179.29	1549.93	-274.33	2.29	115.73	274.54	Tie into Surface Surveys
1675.00	26.51	178.41	1627.97	-312.09	3.06	131.26	312.31	First MWD Survey @ 1675' MD
3168.54	35.15	176.49	2862.27	-1149.00	24.69	471.13	1149.45	Cross @ 3168.54' MD
8496.09	29.99	269.97	7429.43	-3622.06	48.53	1511.61	3707.51	30° Inclination @ 8496.09' MD
8982.51	70.00	267.57	7743.56	-3650.91	-310.84	1848.55	4068.52	70° Inclination @ 8982.51' MD
11632.46	88.96	269.31	7812.00	-3662.69	-2953.00	4239.74	6710.72	Cross @ 11632.46' MD
16323.00	92.18	269.63	7813.79	-3664.22	-7642.71	8475.66	11400.88	Last MWD Survey @ 16323' MD
16387.00	92.18	269.63	7811.36	-3664.63	-7706.66	8533.59	11464.83	Projection to TD @ 16387' MD 2496.5' FNL/ 510' FWL

SHL/ 1150' FSL & 2355' FEL
LP/ 2484' FNL & 2466' FWL
BHL/ 2483' FNL & 460' FWL
Ground Elevation 5274'



Vertical Section at 244.57° (250 usft/in)

T

↑

↗

⊙

Mazimuths to True North
Magnetic North: 8.09°

Magnetic Field
Strength: 51897.6nT
Dip Angle: 66.46°
Date: 6/13/2019
Model: IGRF2015