

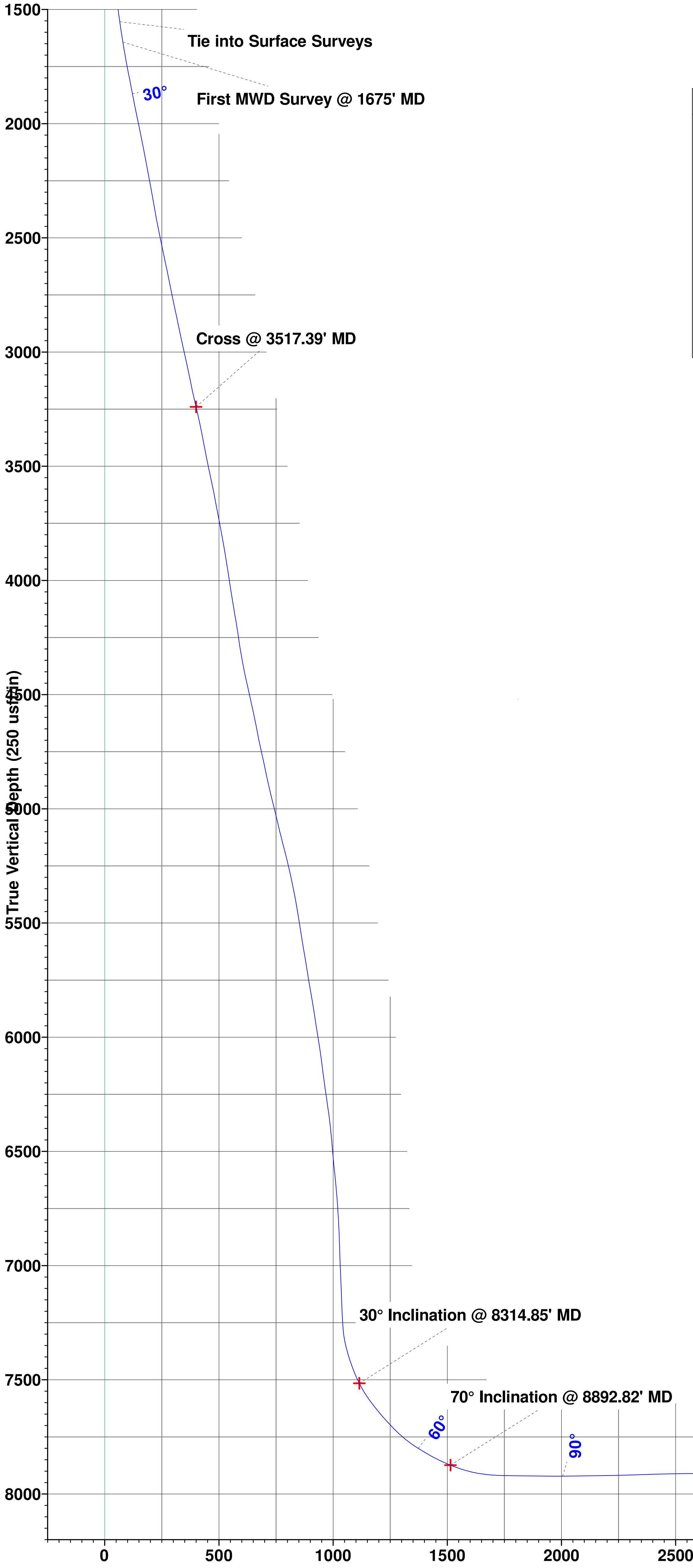


Extraction Oil & Gas
Project: Weld County, CO (NAD83)
Site: Sec 28-T1N-R68W Coyote Trails
Well: Coyote Trails 33W-15-7N
Wellbore: Wellbore #1
Design: Wellbore #1 (Coyote Trails 33W-15-7N/Wellbore #1)
Ensign 147

PROJECT DETAILS: Weld County, CO (NAD83)
Geodetic System: US State Plane 1983
Datum: North American Datum 1983
Ellipsoid: GRS 1980
Zone: Colorado Northern Zone
System Datum: Ground Level
Local North: True

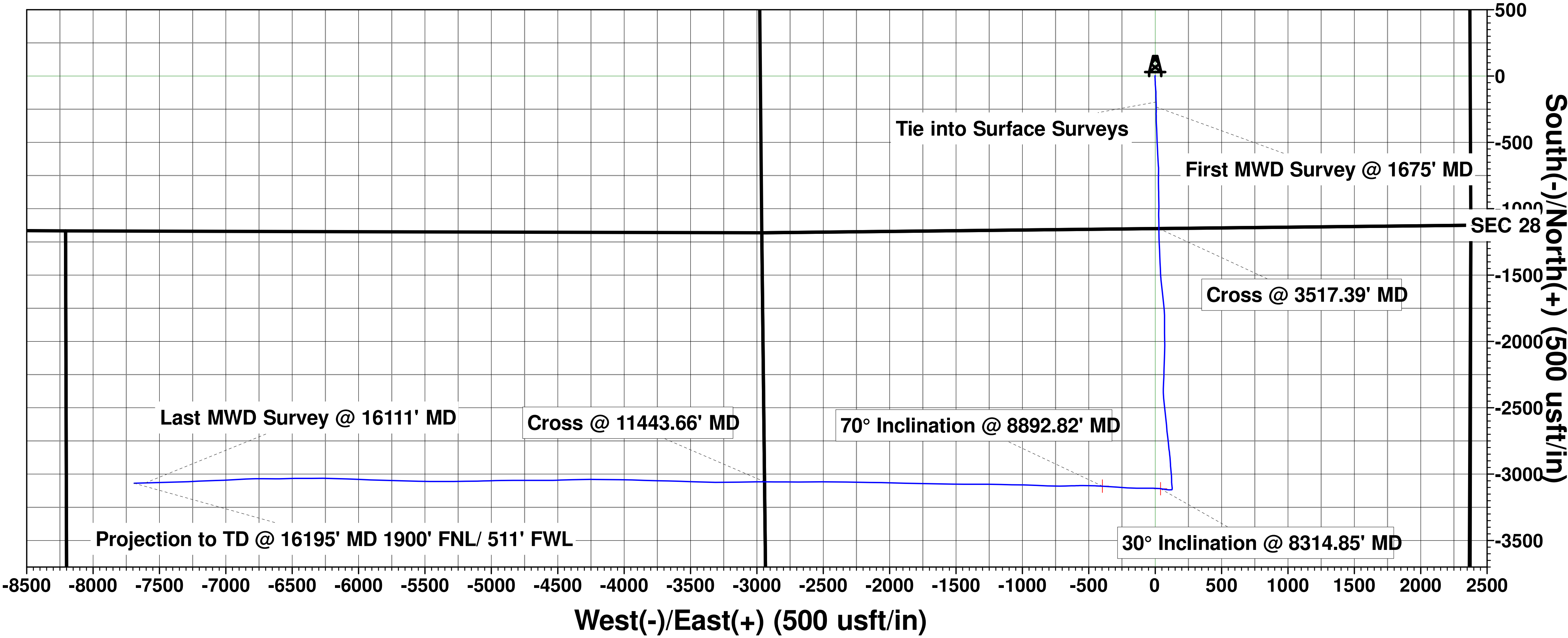


WELL DETAILS:		Coyote Trails 33W-15-7N	
Ground Elevation::		5274.00	
RKB Elevation:		KB @ 5302.00usft (Ensign 147)	
Rig Name:		Ensign 147	
Northing		Easting	
1249778.72		3137927.92	
Latitude		Longitude	
40.017978		-105.007538	



ANNOTATIONS									
MD	Inc	Azi	TVD	+N/-S	+E/-W	VSect	Departure	Annotation	
1578.30	22.10	179.11	1553.98	-195.66	7.04	65.96	202.02	Tie into Surface Surveys	
1675.00	23.51	179.42	1643.12	-233.13	7.52	79.40	239.50	First MWD Survey @ 1675' MD	
3517.39	32.21	179.49	3240.11	-1150.00	28.12	399.99	1156.72	Cross @ 3517.39' MD	
8314.85	30.00	277.53	7515.47	-3109.59	40.29	1114.77	3217.03	30° Inclination @ 8314.85' MD	
8892.82	70.00	273.19	7873.91	-3090.45	-397.36	1514.18	3655.21	70° Inclination @ 8892.82' MD	
11443.66	90.20	270.32	7906.82	-3057.64	-2942.00	3865.53	6200.09	Cross @ 11443.66' MD	
16111.00	88.95	268.26	7948.34	-3065.53	-7606.94	8201.36	10866.64	Last MWD Survey @ 16111' MD	
16195.00	88.95	268.26	7949.88	-3068.08	-7690.89	8280.27	10950.63	Projection to TD @ 16195' MD 1900' FNL/ 511' FWL	

SHL/ 1150' FSL & 2373' FEL
LP/ 1904' FNL & 2473' FWL
BHL/ 1903' FNL & 460' FWL
Ground Elevation 5274'



T

M

Azimuths to True North
Magnetic North: 8.09°

Magnetic Field
Strength: 51897.6nT
Dip Angle: 66.46°
Date: 6/13/2019
Model: IGRF2015

Vertical Section at 248.25° (250 usft/in)