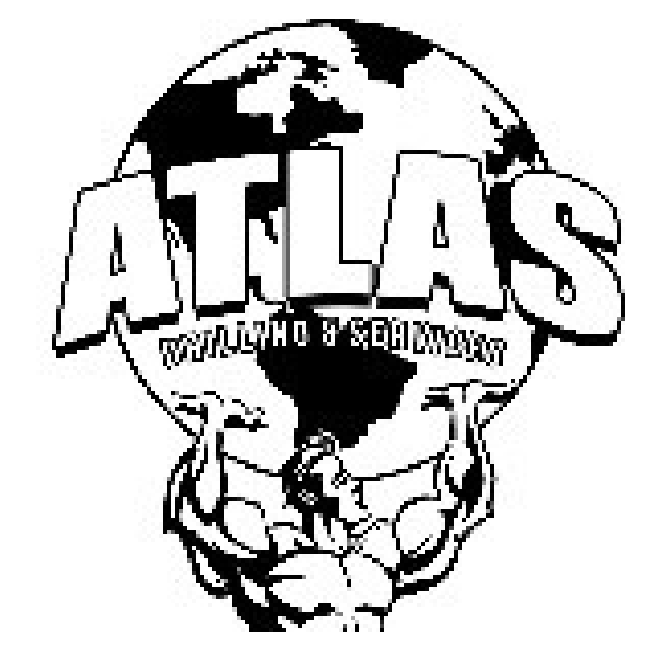




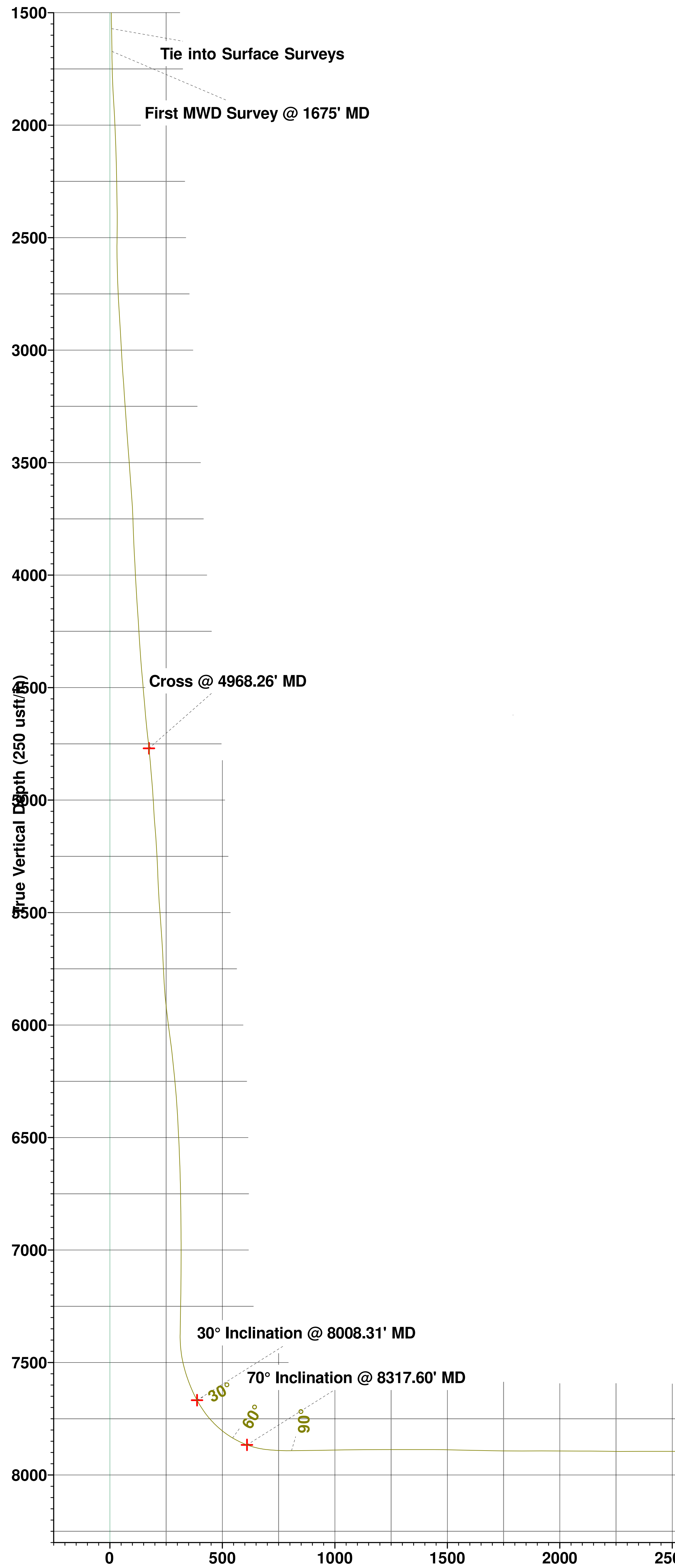
Extraction Oil & Gas
 Project: Weld County, CO (NAD83)
 Site: Sec 28-T1N-R68W Coyote Trails
 Well: Coyote Trails 33W-15-3C
 Wellbore: Wellbore #1
 Design: Wellbore #1 (Coyote Trails 33W-15-3C/Wellbore #1)
 Ensign 147

PROJECT DETAILS: Weld County, CO (NAD83)
 Geodetic System: US State Plane 1983
 Datum: North American Datum 1983
 Ellipsoid: GRS 1980
 Zone: Colorado Northern Zone
 System Datum: Ground Level
 Local North: True



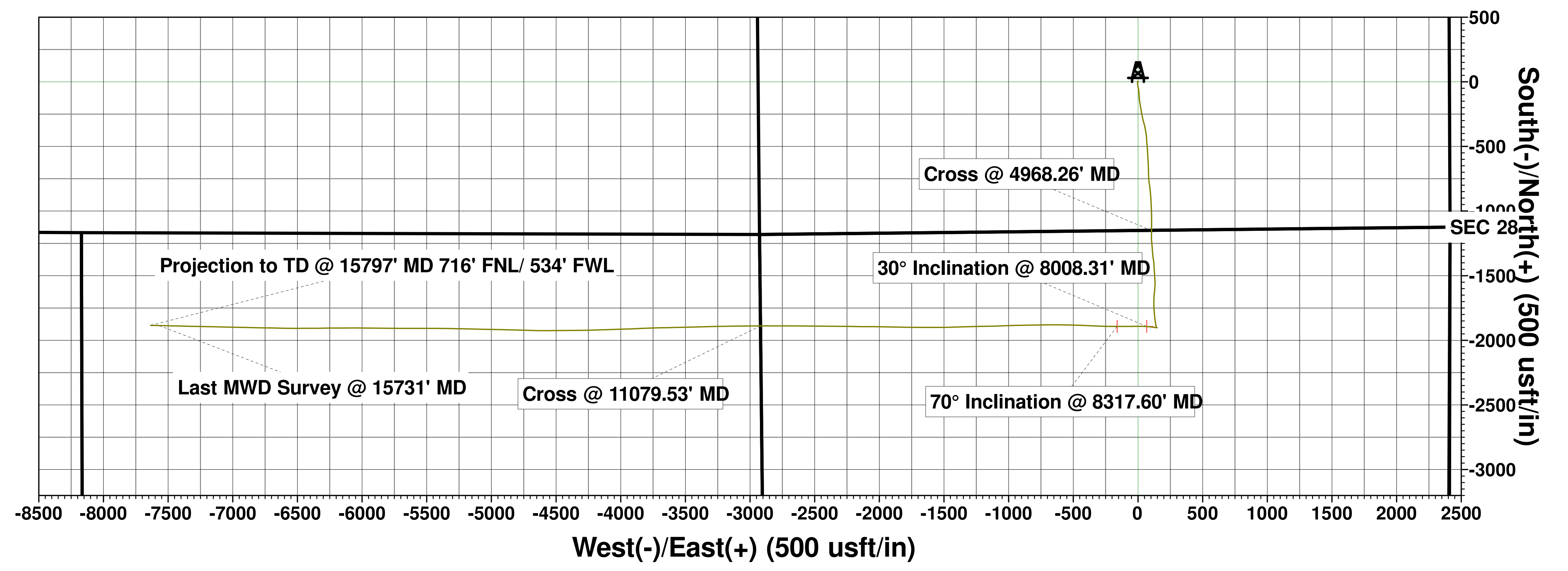
WELL DETAILS: Coyote Trails 33W-15-3C
 Ground Elevation: 5275.00
 RKB Elevation: KB @ 5303.00usft (Ensign 147)
 Rig Name: Ensign 147

Northing	Easting	Latitude	Longitude
1249778.53	3137891.79	40.017978	-105.007667



ANNOTATIONS									
MD	Inc	Azi	TVD	+N/-S	+E/-W	Vsect	Departure	Annotation	
1572.30	8.22	174.28	1571.05	-27.48	-0.86	7.42	38.26	Tie into Surface Surveys	
1675.00	11.67	169.42	1672.20	-45.00	1.78	9.06	56.00	First MWD Survey @ 1675' MD	
4968.26	22.07	180.62	4770.24	-1150.00	104.84	173.73	1168.39	Cross @ 4968.26' MD	
8008.31	29.96	274.31	7667.70	-1892.45	68.02	387.36	2010.61	30° Inclination @ 8008.31' MD	
8317.60	70.00	270.18	7866.09	-1892.95	-160.62	609.46	2238.05	70° Inclination @ 8317.60' MD	
11079.53	88.84	269.91	7904.11	-1888.00	-2919.00	3286.32	4996.73	Cross @ 11079.53' MD	
15731.00	91.78	271.66	7940.11	-1885.99	-7569.01	7800.42	9647.70	Last MWD Survey @ 15731' MD	
15797.00	91.78	271.66	7938.06	-1884.08	-7634.95	7863.99	9713.67	Projection to TD @ 15797' MD 716' FNL/ 534' FWL	

SHL/ 1151' FSL & 2409' FEL
 LP/ 744' FNL & 2485' FEL
 BHL/ 743' FNL & 460' FWL
 Ground Elevation 5275'



Vertical Section at 256.14° (250 usft/in)

Magnetic Field
 Strength: 51897.6nT
 Dip Angle: 66.46°
 Date: 6/13/2019
 Model: IGRF2015

Azimuths to True North
 Magnetic North: 8.09°