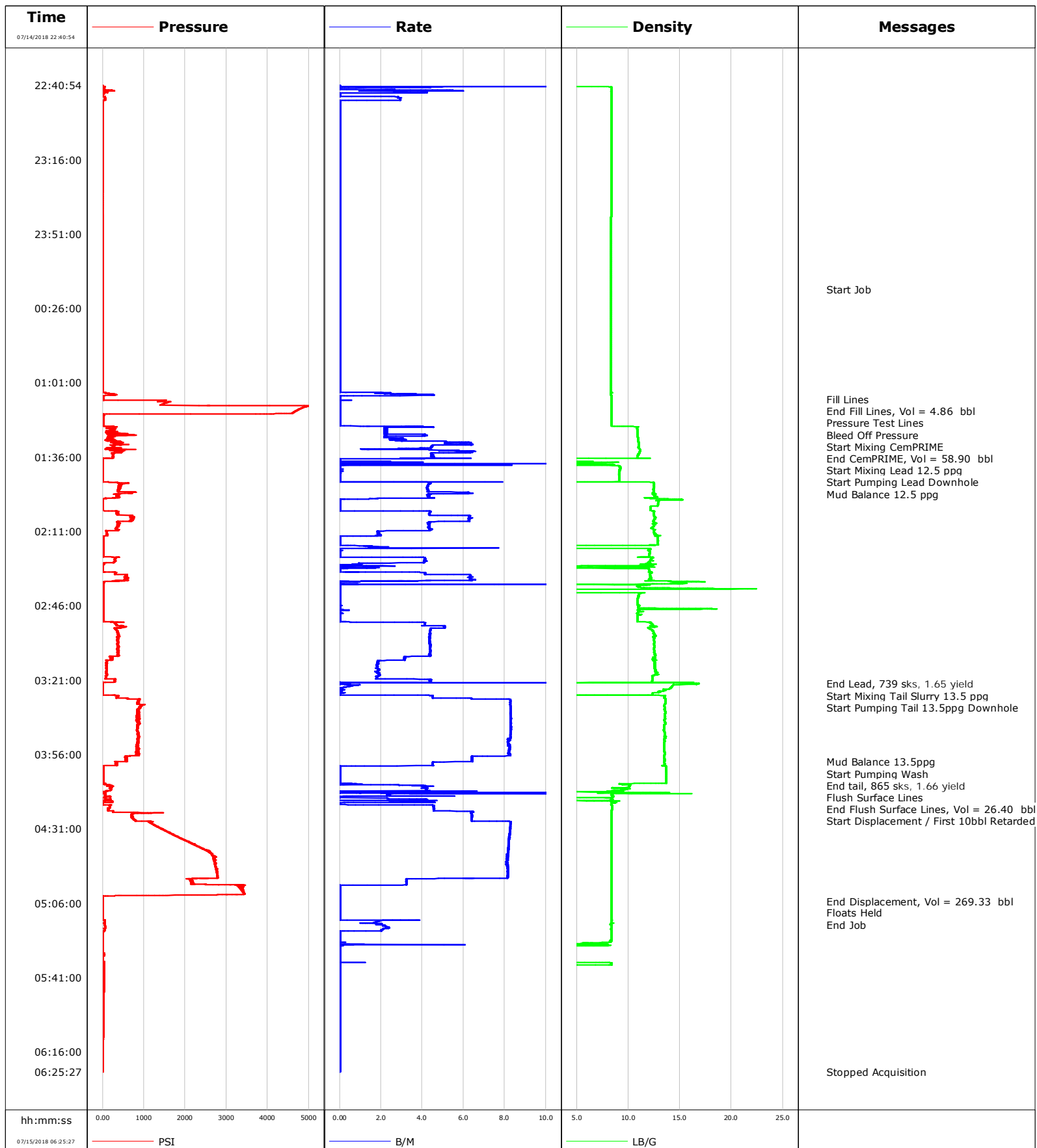


Well Ruegge 3N-4H-N165
Field DJ
Engineer Adam Aasen
Country United States

Client CRESTONE PEAK RESOURCES OPERAT
SIR No. E0ZP-00375
Job Type Production
Job Date 07-15-2018



Cementing Service Report

				Customer CRESTONE PEAK RESOURCES OPERAT			Job Number EOZP-00375	
Well Ruegge 3N-4H-N165 EOZP-00375			Location (legal)		Schlumberger Location Cheyenne		Job Start Jul/15/2018	
Field DJ		Formation Name/Type		Deviation 90 deg	Bit Size 8.5 in	Well MD 12160.0 ft	Well TVD 7100.0 ft	
County		State/Province Colorado		BHP psi	BHST 223 degF	BHCT 194 degF	Pore Press. Gradient lb/gal	
Well Master		API/UWI						
Rig Name Ensign 140	Drilled For Oil	Service Via Land	Casing / Liner					
			Depth, ft	Size, in	Weight, lb/ft	Grade	Thread	
Offshore Zone	Well Class New	Well Type New Well Completion	2504.0	9.6	40.0	J55	N/A	
			12145.0	5.5	20.0	P110	BTC	
Drilling Fluid Type Oil Mud		Max. Density 10.40 lb/gal	Plastic Viscosity 49.000 cP	Tubing / Drill Pipe				
				T/D	Depth, ft	Size, in	Weight, lb/ft	Grade
Service Line Cementing	Job Type Production							
Max. Allowed Tub. Press 2500 psi	Max. Allowed Ann. Press 2500 psi	WH Connection	Perforations / Open Hole					
			Top, ft	Bottom, ft	shot/ft	No. of Shots	Total Interval	
			ft	ft			ft	
			ft	ft			Diameter	
			ft	ft			in	
			Treat Down Casing	Displacement 169.4 bbl	Packer Type	Packer Depth ft		
			Tubing Vol. bbl	Casing Vol. 269.6 bbl	Annular Vol. 27.6 bbl	Openhole Vol. 393.3 bbl		
Casing/Tubing Secured <input checked="" type="checkbox"/>		1 Hole Vol. Circulated prior to Cement <input type="checkbox"/>		Casing Tools			Squeeze Job	
Lift Pressure psi				Shoe Type Float			Squeeze Type	
Pipe Rotated <input type="checkbox"/>		Pipe Reciprocated <input type="checkbox"/>		Shoe Depth 12145.0 ft			Tool Type	
No. Centralizers		Top Plugs 1	Bottom Plugs	Stage Tool Type			Tool Depth ft	
Cement Head Type Single				Stage Tool Depth ft			Tail Pipe Size in	
Job Scheduled For Jul/14/2018 21:00		Arrived on Location Jul/15/2018 20:30	Leave Location Jul/15/2018 07:00	Collar Type Float			Tail Pipe Depth ft	
				Collar Depth 12134.0 ft			Sqz. Total Vol. bbl	
Date	Time 24-hr clock	Treating Pressure PSI	Flow Rate B/M	Density LB/G	Volume BBL	Message		
07/14/2018	22:40:54	-0	0.0	0.01	0.0	Started Acquisition		
07/15/2018	00:17:11	4	0.0	8.34	0.0	Start Job		
07/15/2018	01:08:59	16	0.0	8.36	4.8	Fill Lines		
07/15/2018	01:11:20	1420	0.0	8.36	4.9	End Fill Lines, Vol = 4.86 bbl		
07/15/2018	01:12:43	4840	0.0	8.36	4.9	Pressure Test Lines		
07/15/2018	01:15:39	3720	0.0	8.36	4.9	Bleed Off Pressure		
07/15/2018	01:16:47	21	0.0	8.36	0.0	Start Mixing CemPRIME		
07/15/2018	01:36:42	9	0.0	0.40	58.9	End CemPRIME, Vol = 58.90 bbl		
07/15/2018	01:36:52	9	0.0	0.23	0.0	Start Mixing Lead 12.5 ppg		
07/15/2018	01:41:07	7	0.0	9.21	1.1	Start Pumping Lead Downhole		
07/15/2018	01:48:34	425	4.4	12.48	4.2	Mud Balance 12.5 ppg		
07/15/2018	03:22:48	4	0.0	16.61	226.5	End Lead, Vol = 226.52 bbl		
07/15/2018	03:23:28	4	0.7	14.30	0.4	Start Mixing Tail Slurry 13.5 ppg		
07/15/2018	03:26:30	6	0.0	13.10	0.8	Start Pumping Tail 13.5ppg Downhole		
07/15/2018	03:59:28	336	4.6	13.47	248.5	Mud Balance 13.5ppg		
07/15/2018	04:01:36	12	0.0	13.67	256.7	Start Pumping Wash		
07/15/2018	04:02:04	13	0.0	13.67	256.7	End Tail, Vol = 256.68 bbl		
07/15/2018	04:03:33	12	0.0	13.66	0.0	Flush Surface Lines		
07/15/2018	04:18:45	2	0.0	8.72	26.4	End Flush Surface Lines, Vol = 26.40 bbl		
07/15/2018	04:19:15	5	0.0	8.36	0.0	Start Displacement / First 10bbl Retarded Water		
07/15/2018	05:05:01	8	0.0	8.37	274.3	End Displacement, Vol = 269.33 bbl		

Well Ruegge 3N-4H-N165 E0ZP-00375			Field DJ		Job Start Jul/15/2018		Customer CRESTONE PEAK RESOURCES OPERAT		Job Number E0ZP-00375	
Date	Time 24-hr clock	Treating Pressure PSI		Flow Rate B/M	Density LB/G	Volume BBL		Message		
07/15/2018	05:06:41	8		0.0	8.37	274.3		End Job		

Post Job Summary

Average Pump Rates, bbl/min					Volume of Fluid Injected, bbl			
Slurry	N2	Mud	Maximum Rate		Total Slurry 482.0	Mud	Spacer 58.0	N2
Treating Pressure Summary, psi					Breakdown Fluid			
Maximum	Final 0	Average	Bump Plug to 3200	Breakdown	Type FreshWater	Volume 1200.0 bbl		Density 8.34 lb/gal
Avg. N2 Percent %	Designed Slurry Volume 472.0 bbl		Displacement 269.0 bbl	Mix Water Temp 65 degF	Cement Circulated to Surface? <input checked="" type="checkbox"/>		Volume 30.0 bbl	
					Washed Thru Perfs <input type="checkbox"/>		To ft	
Customer or Authorized Representative Larry Candelaria			Schlumberger Supervisor Adam Aasen			Circulation Lost <input type="checkbox"/>		Job Completed <input checked="" type="checkbox"/>
						-		-