

# Inspection Photos

09/11/2019

Operator: OMIMEX PETROLEUM INC - 66190

Location ID: 304893

Yuma County, CO

Aaron Trujillo

NE Reclamation Specialist

COGCC

Inspection Photos  
Operator Name: OMIMEX PETROLEUM INC - 66190  
Location ID: 304893



**Photo 1:** Most recent Google Earth aerial imagery (2016). Photo shows location and access road. Majority of access road has revegetated and is not immediately obvious in the field. Yellow dotted line shows area of initial pad disturbance based on the aerial image.



Inspection Photos  
Operator Name: OMIMEX PETROLEUM INC - 66190  
Location ID: 304893



**Photo 2:** Photo taken from the west of the location, facing east. Photo provides an overview of the location. Arrow shows well location.



Inspection Photos  
Operator Name: OMIMEX PETROLEUM INC - 66190  
Location ID: 304893



**Photo 3:** Continued from photo 2. Zoomed in photo to show well.



Inspection Photos  
Operator Name: OMIMEX PETROLEUM INC - 66190  
Location ID: 304893



**Photo 4:** Photo taken from the south of the well, facing north. Photo shows well and pad. With exception to areas east and southeast of the well, the majority of the initial disturbance area has revegetated.





Inspection Photos  
Operator Name: OMIMEX PETROLEUM INC - 66190  
Location ID: 304893



**Photo 5:** Photo taken from the south of the well, facing east. See comments under photo 4.





Inspection Photos  
Operator Name: OMIMEX PETROLEUM INC - 66190  
Location ID: 304893



**Photo 6:** Photo taken from the south of the well, facing south. See comments under photo 4.





Inspection Photos  
Operator Name: OMIMEX PETROLEUM INC - 66190  
Location ID: 304893



**Photo 7:** Photo taken from the south of the well, facing west. See comments under photo 4.



Inspection Photos  
Operator Name: OMIMEX PETROLEUM INC - 66190  
Location ID: 304893



**Photo 8:** Photo of sign next to well.





Inspection Photos  
Operator Name: OMIMEX PETROLEUM INC - 66190  
Location ID: 304893



**Photo 9:** Photo of well.





Inspection Photos  
Operator Name: OMIMEX PETROLEUM INC - 66190  
Location ID: 304893



**Photo 10:** Continued from photo 9.





Inspection Photos  
Operator Name: OMIMEX PETROLEUM INC - 66190  
Location ID: 304893

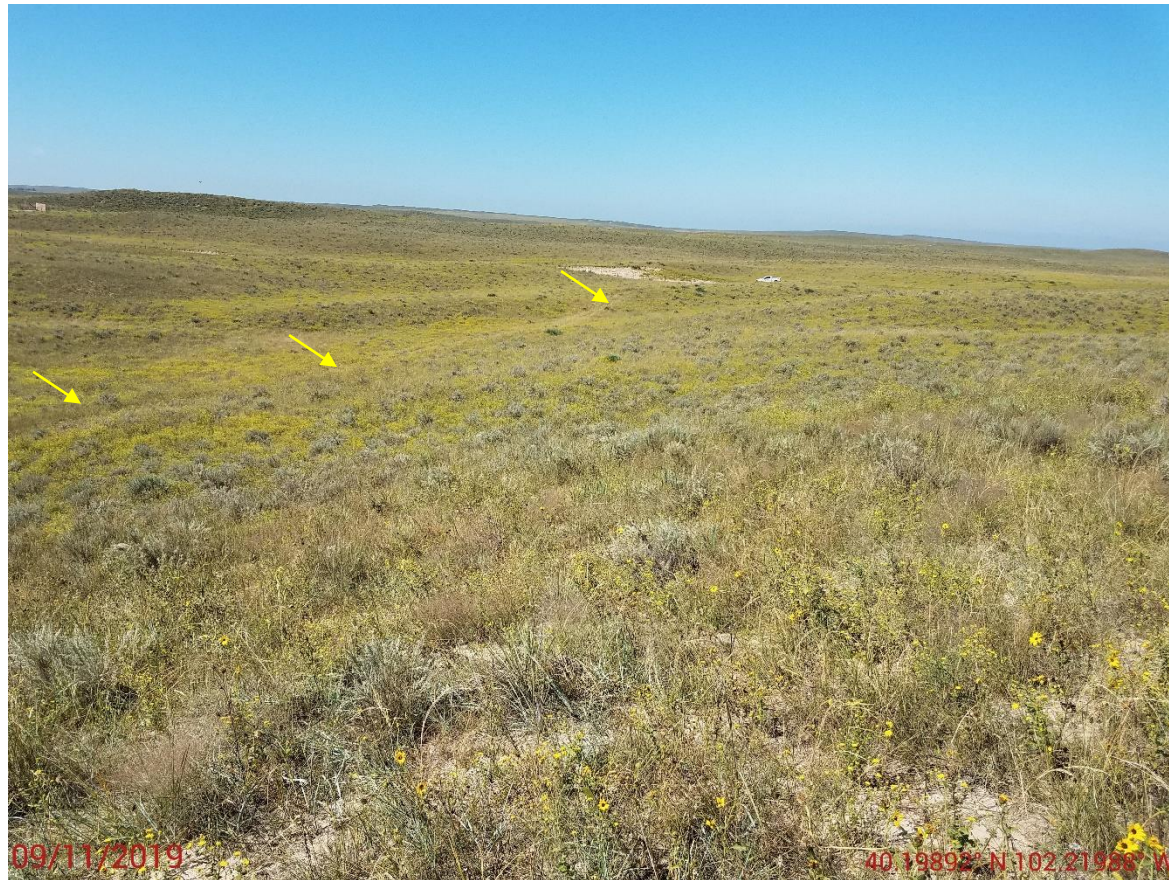


**Photo 11:** Photo taken from the southeast areas of the location. Photo shows areas where vegetation has not re-established as uniformly as the rest of the location. Areas to the east are predominantly exposed soils.





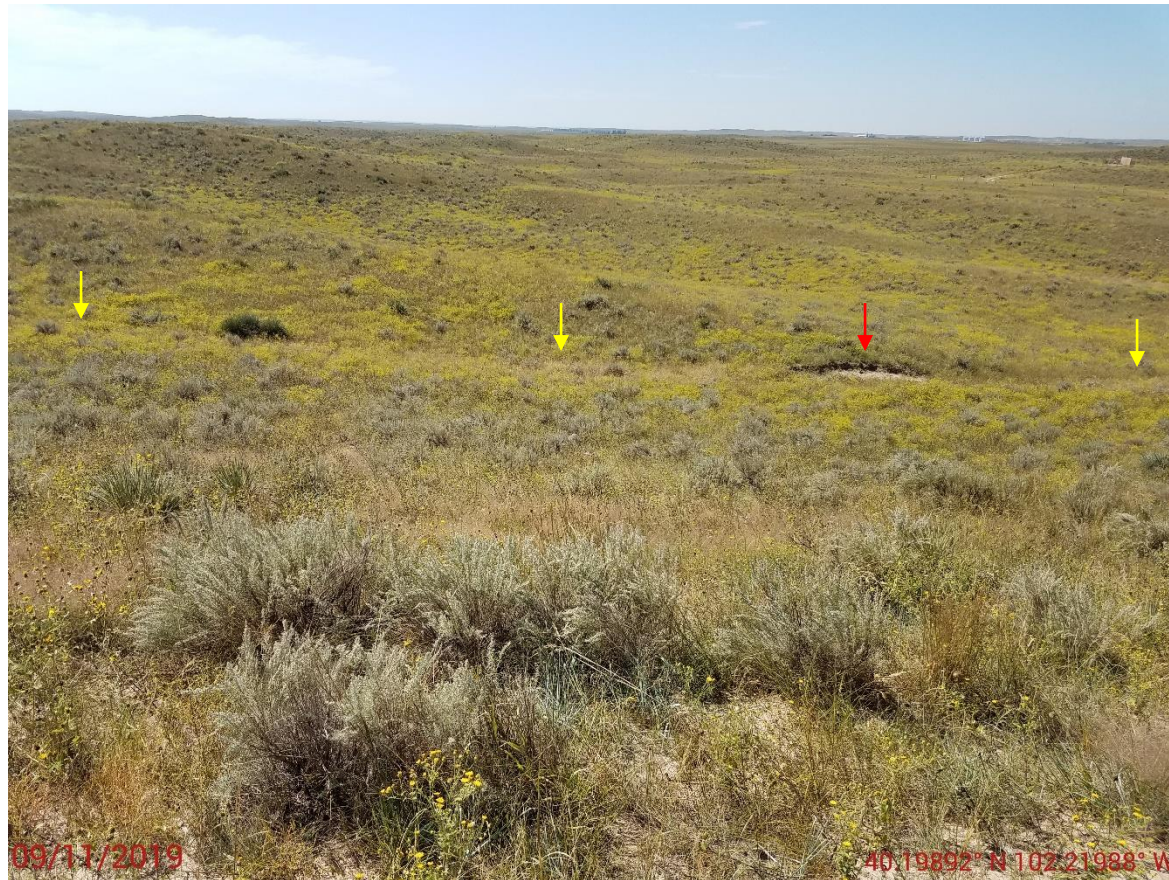
Inspection Photos  
Operator Name: OMIMEX PETROLEUM INC - 66190  
Location ID: 304893



**Photo 12:** Photo taken from the adjacent lands west of the location. Photo shows the access road (yellow) to the location. Majority of access road has revegetated and was not immediately obvious in the field.



Inspection Photos  
Operator Name: OMIMEX PETROLEUM INC - 66190  
Location ID: 304893



**Photo 13:** Photo taken from the adjacent lands west of the location, facing south. Photo shows the access road (yellow arrow) to the location. Photo also shows areas where erosion is evident along access road (red arrow).





Inspection Photos  
Operator Name: OMIMEX PETROLEUM INC - 66190  
Location ID: 304893



**Photo 14:** Photo taken from the adjacent lands west of the location. Photo shows the access road (yellow) to the location. Majority of access road has revegetated and was not immediately obvious in the field.



Inspection Photos  
Operator Name: OMIMEX PETROLEUM INC - 66190  
Location ID: 304893



**Photo 15:** Photo taken from the access road, facing west. Photo shows erosion degradation along access road. See photo 13.



Inspection Photos  
Operator Name: OMIMEX PETROLEUM INC - 66190  
Location ID: 304893



**Photo 16:** Photo taken from the access road, facing east. Photo shows erosion degradation along access road.





Inspection Photos  
Operator Name: OMIMEX PETROLEUM INC - 66190  
Location ID: 304893



**Photo 17:** Photo taken from the access road, facing east. Photo shows the access road (yellow) to the location. Majority of access road has revegetated and was not immediately obvious in the field.



Inspection Photos  
Operator Name: OMIMEX PETROLEUM INC - 66190  
Location ID: 304893



**Photo 18:** Photo shows area where the location's access road intersect with the main north/south access road.

## Inspection Photos

Operator Name: OMIMEX PETROLEUM INC - 66190

Location ID: 304893



**Photo 19:** 2006 Google Earth aerial imagery. Photo shows areas prior to oil and gas disturbance. Note: No erosion degradation along the path of the access road is evident.



**Photo 20:** 2013 Google earth Aerial imagery. Photo shows access road, and area where erosion degradation was observed. See photo 15,16.