

FRAM OPERATING LLC – 10310

Location ID # 334471

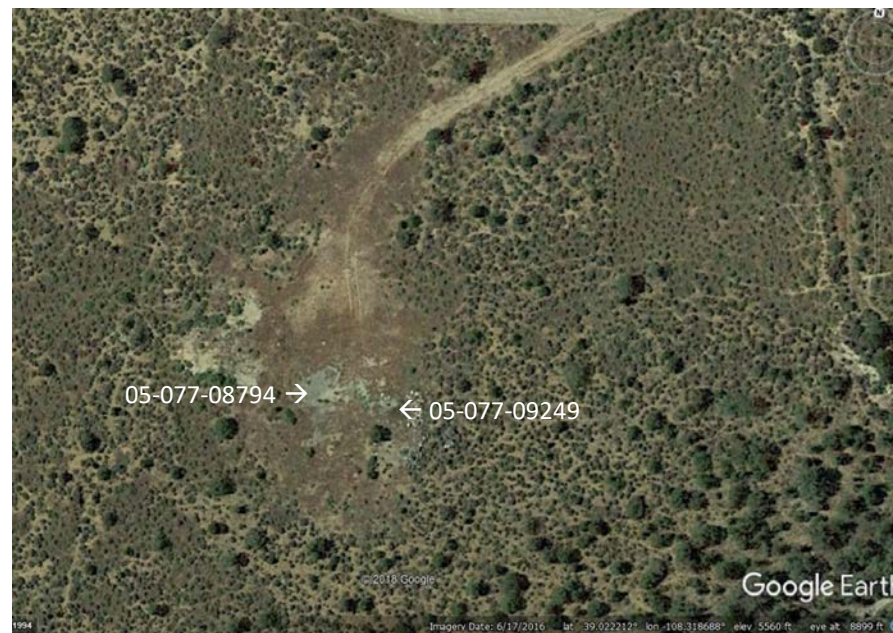
API # 05-077-08794 Lough #36-1

API # 05-077-09249 Lough #36-1-P

Inspection Date : 9/10/2019



GoogleEarth view of location area showing access road with entrance off Lands End Rd. (FS.00) Image date 6/17/2016.



GoogleEarth view of location.
Image date 6/17/2016

FRAM OPERATING LLC – 10310

Location ID # 334471

API # 05-077-08794 Lough #36-1

API # 05-077-09249 Lough #36-1-P

Inspection Date : 9/10/2019



**API # 05-077-08794 Lough #36-1 with sign.
Looking S.**



**API # 05-077-09249 Lough #36-1-P
13 3/8" casing with welded plate (Sfc Csg / PA?)
Looking W.**

FRAM OPERATING LLC – 10310

Location ID # 334471

API # 05-077-08794 Lough #36-1

API # 05-077-09249 Lough #36-1-P

Inspection Date : 9/10/2019



SW corner anchor marker looking N.



NE corner anchor marker looking W

FRAM OPERATING LLC – 10310

Location ID # 334471

API # 05-077-08794 Lough #36-1

API # 05-077-09249 Lough #36-1-P

Inspection Date : 9/10/2019



NW corner anchor marker looking SE.



NE corner anchor marker looking S