



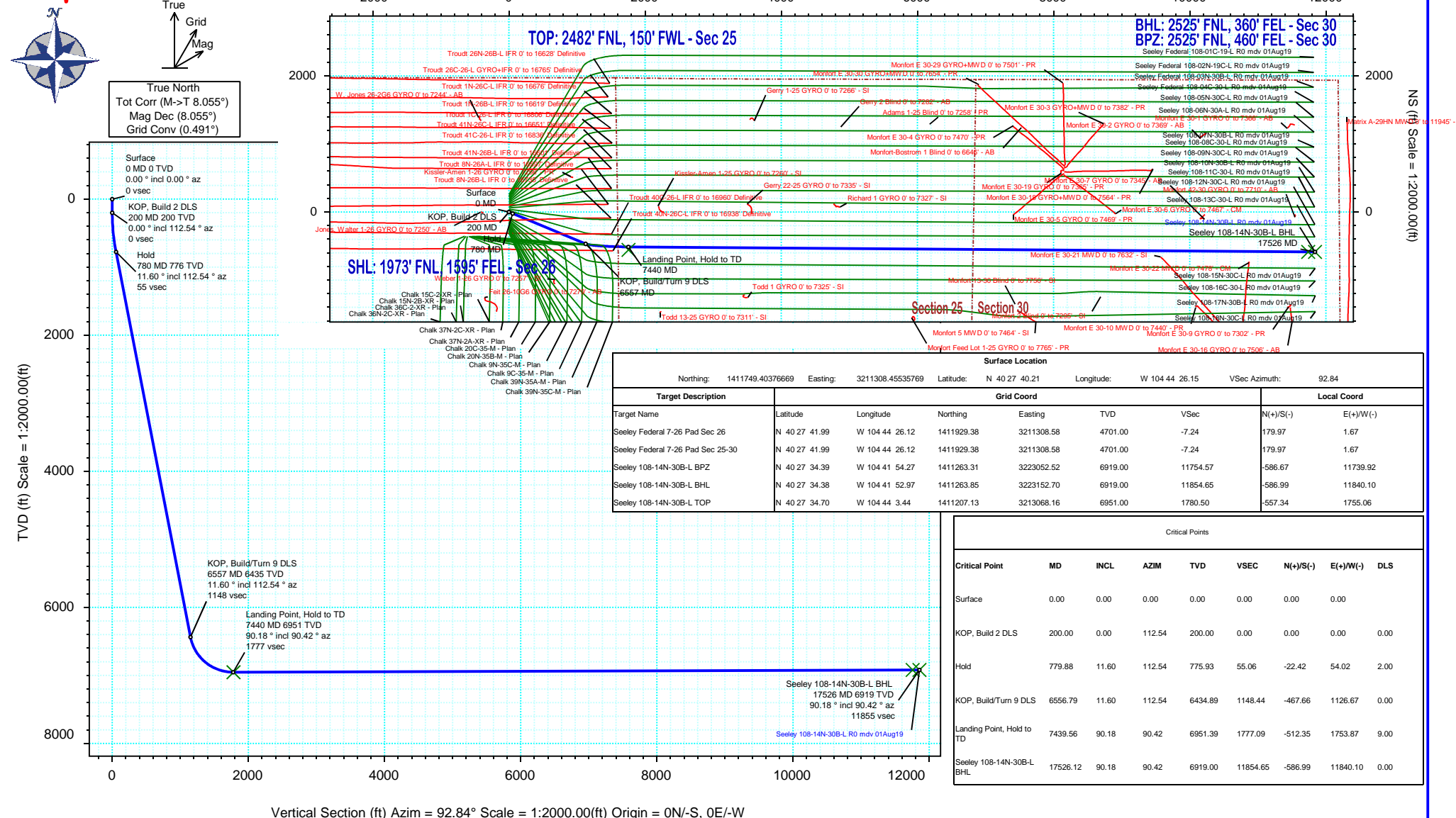
# SRC Energy

# Schlumberger

## Rev 0

Borehole:		Well:	Field:	Structure:
Original Hole		Seeley 108-14N-30B-L	CO, Weld County (NAD 83 NZ) - SRC	SRC Energy 26-06N-66W (Chalk-Seeley Federal 7-26 Pad DSU 108)
Gravity & Magnetic Parameters			Surface Location	Miscellaneous
Model:	HDGM 2019	Dip: 66.847°	Date: 31-Jul-2019	Lat: N 40 27 40.21
MagDec:	8.055°	FS: 52216.282nT	Gravity FS: 999.049mgn (9.80665 Based)	Northing: 1411749.4ftUS
			Lon: W 104 44 26.15	Easting: 3211308.46ftUS
				Grid Conv: 0.4907°
				Scale Fact: 0.99996357
				Slot: Seeley 108-14N-30B-L
				Plan: Seeley 108-14N-30B-L R0 mdy 01Aug19
				TVD Ref: KB 4ft(4701ft above MSL)

## Proposal





## Seeley 108-14N-30B-L R0 mdv 01Aug19 Proposal Geodetic Report

(Def Plan)

**Report Date:** August 27, 2019 - 09:38 AM  
**Client:** SRC Energy  
**Field:** CO, Weld County (NAD 83 NZ) - SRC  
**Structure / Slot:** SRC Energy 26-06N-66W (Chalk-Seeley Federal 7-26 Pad DSU 108) / Seeley 108-14N-30B-L  
**Well:** Seeley 108-14N-30B-L  
**Borehole:** Original Hole  
**UWI / API#:** Unknown / 05-123-48889  
**Survey Name:** Seeley 108-14N-30B-L R0 mdv 01Aug19  
**Survey Date:** July 18, 2019  
**Tort / AHD / DDI / ERD Ratio:** 91.048 ° / 11936.485 ft / 6.438 / 1.717  
**Coordinate Reference System:** NAD83 Colorado State Plane, Northern Zone, US Feet  
**Location Lat / Long:** N 40° 27' 40.21200", W 104° 44' 26.14560"  
**Location Grid N/E Y/X:** N 1411749.404 ftUS, E 3211308.455 ftUS  
**CRS Grid Convergence Angle:** 0.4907 °  
**Grid Scale Factor:** 0.99996357  
**Version / Patch:** 2.10.760.0

**Survey / DLS Computation:** Minimum Curvature / Lubinski  
**Vertical Section Azimuth:** 92.838 ° (True North)  
**Vertical Section Origin:** 0.000 ft, 0.000 ft  
**TVD Reference Datum:** KB 4ft  
**TVD Reference Elevation:** 4701.000 ft above MSL  
**Seabed / Ground Elevation:** 4697.000 ft above MSL  
**Magnetic Declination:** 8.055 °  
**Total Gravity Field Strength:** 999.0490mgn (9.80665 Based)  
**Gravity Model:** GARM  
**Total Magnetic Field Strength:** 52216.282 nT  
**Magnetic Dip Angle:** 66.847 °  
**Declination Date:** July 31, 2019  
**Magnetic Declination Model:** HDGM 2019  
**North Reference:** True North  
**Grid Convergence Used:** 0.0000 °  
**Total Corr Mag North->True North:** 8.0554 °  
**Local Coord Referenced To:** Well Head

Comments	MD (ft)	Incl (°)	Azim True (°)	TVD (ft)	VSEC (ft)	NS (ft)	EW (ft)	DLS (°/100ft)	Northing (ftUS)	Easting (ftUS)	Latitude (°)	Longitude (°)
Surface	0.00	0.00	0.00	0.00	0.00	0.00	0.00	N/A	1411749.40	3211308.46	40.461170	-104.740596
	100.00	0.00	112.54	100.00	0.00	0.00	0.00	0.00	1411749.40	3211308.46	40.461170	-104.740596
KOP, Build 2	200.00	0.00	112.54	200.00	0.00	0.00	0.00	0.00	1411749.40	3211308.46	40.461170	-104.740596
DLS	300.00	2.00	112.54	299.98	1.64	-0.67	1.61	2.00	1411748.75	3211310.07	40.461168	-104.740590
	400.00	4.00	112.54	399.84	6.57	-2.68	6.45	2.00	1411746.78	3211314.92	40.461163	-104.740573
	500.00	6.00	112.54	499.45	14.77	-6.02	14.49	2.00	1411743.51	3211323.00	40.461153	-104.740544
	600.00	8.00	112.54	598.70	26.25	-10.69	25.75	2.00	1411738.94	3211334.29	40.461141	-104.740503
	700.00	10.00	112.54	697.47	40.97	-16.69	40.20	2.00	1411733.06	3211348.79	40.461124	-104.740452
Hold	779.88	11.60	112.54	775.93	55.06	-22.42	54.02	2.00	1411727.45	3211362.66	40.461108	-104.740402
	800.00	11.60	112.54	795.64	58.87	-23.97	57.76	0.00	1411725.93	3211366.41	40.461104	-104.740388
	900.00	11.60	112.54	893.60	77.80	-31.68	76.32	0.00	1411718.38	3211385.04	40.461083	-104.740322
	1000.00	11.60	112.54	991.55	96.73	-39.39	94.89	0.00	1411710.83	3211403.68	40.461062	-104.740255
	1100.00	11.60	112.54	1089.51	115.65	-47.09	113.46	0.00	1411703.28	3211422.31	40.461041	-104.740188
	1200.00	11.60	112.54	1187.47	134.58	-54.80	132.03	0.00	1411695.74	3211440.94	40.461020	-104.740122
	1300.00	11.60	112.54	1285.43	153.51	-62.51	150.59	0.00	1411688.19	3211459.57	40.460998	-104.740055
	1400.00	11.60	112.54	1383.39	172.43	-70.22	169.16	0.00	1411680.64	3211478.21	40.460977	-104.739988
	1500.00	11.60	112.54	1481.35	191.36	-77.92	187.73	0.00	1411673.09	3211496.84	40.460956	-104.739921
	1600.00	11.60	112.54	1579.30	210.29	-85.63	206.30	0.00	1411665.55	3211515.47	40.460935	-104.739855
	1700.00	11.60	112.54	1677.26	229.21	-93.34	224.87	0.00	1411658.00	3211534.10	40.460914	-104.739788
	1800.00	11.60	112.54	1775.22	248.14	-101.05	243.43	0.00	1411650.45	3211552.74	40.460893	-104.739721
	1900.00	11.60	112.54	1873.18	267.07	-108.75	262.00	0.00	1411642.90	3211571.37	40.460871	-104.739654
	2000.00	11.60	112.54	1971.14	285.99	-116.46	280.57	0.00	1411635.36	3211590.00	40.460850	-104.739588
	2100.00	11.60	112.54	2069.10	304.92	-124.17	299.14	0.00	1411627.81	3211608.63	40.460829	-104.739521
	2200.00	11.60	112.54	2167.05	323.85	-131.87	317.71	0.00	1411620.26	3211627.27	40.460808	-104.739454
	2300.00	11.60	112.54	2265.01	342.77	-139.58	336.27	0.00	1411612.71	3211645.90	40.460787	-104.739388
	2400.00	11.60	112.54	2362.97	361.70	-147.29	354.84	0.00	1411605.17	3211664.53	40.460766	-104.739321
	2500.00	11.60	112.54	2460.93	380.63	-155.00	373.41	0.00	1411597.62	3211683.16	40.460745	-104.739254
	2600.00	11.60	112.54	2558.89	399.55	-162.70	391.98	0.00	1411590.07	3211701.80	40.460723	-104.739187
	2700.00	11.60	112.54	2656.85	418.48	-170.41	410.54	0.00	1411582.52	3211720.43	40.460702	-104.739121
	2800.00	11.60	112.54	2754.80	437.41	-178.12	429.11	0.00	1411574.97	3211739.06	40.460681	-104.739054
	2900.00	11.60	112.54	2852.76	456.33	-185.82	447.68	0.00	1411567.43	3211757.69	40.460660	-104.738987
	3000.00	11.60	112.54	2950.72	475.26	-193.53	466.25	0.00	1411559.88	3211776.33	40.460639	-104.738920
	3100.00	11.60	112.54	3048.68	494.19	-201.24	484.82	0.00	1411552.33	3211794.96	40.460618	-104.738854
	3200.00	11.60	112.54	3146.64	513.11	-208.95	503.38	0.00	1411544.78	3211813.59	40.460596	-104.738787
	3300.00	11.60	112.54	3244.60	532.04	-216.65	521.95	0.00	1411537.24	3211832.22	40.460575	-104.738720
	3400.00	11.60	112.54	3342.55	550.97	-224.36	540.52	0.00	1411529.69	3211850.86	40.460554	-104.738654
	3500.00	11.60	112.54	3440.51	569.89	-232.07	559.09	0.00	1411522.14	3211869.49	40.460533	-104.738587
	3600.00	11.60	112.54	3538.47	588.82	-239.77	577.65	0.00	1411514.59	3211888.12	40.460512	-104.738520
	3700.00	11.60	112.54	3636.43	607.75	-247.48	596.22	0.00	1411507.05	3211906.75	40.460491	-104.738453
	3800.00	11.60	112.54	3734.39	626.67	-255.19	614.79	0.00	1411499.50	3211925.38	40.460470	-104.738387
	3900.00	11.60	112.54	3832.35	645.60	-262.90	633.36	0.00	1411491.95	3211944.02	40.460448	-104.738320
	4000.00	11.60	112.54	3930.30	664.53	-270.60	651.93	0.00	1411484.40	3211962.65	40.460427	-104.738253
	4100.00	11.60	112.54	4028.26	683.45	-278.31	670.49	0.00	1411476.86	3211981.28	40.460406	-104.738187
	4200.00	11.60	112.54	4126.22	702.38	-286.02	689.06	0.00	1411469.31	3211999.91	40.460385	-104.738120
	4300.00	11.60	112.54	4224.18	721.31	-293.72	707.63	0.00	1411461.76	3212018.55	40.460364	-104.738053
	4400.00	11.60	112.54	4322.14	740.23	-301.43	726.20	0.00	1411454.21	3212037.18	40.460343	-104.737986
	4500.00	11.60	112.54	4420.10	759.16	-309.14	744.77	0.00	1411446.67	3212055.81	40.460321	-104.737920
	4600.00	11.60	112.54	4518.05	778.09	-316.85	763.33	0.00	1411439.12	3212074.44	40.460300	-104.737853
	4700.00	11.60	112.54	4616.01	797.01	-324.55	781.90	0.00	1411431.57	3212093.08	40.460279	-104.737786
	4800.00	11.60	112.54	4713.97	815.94	-332.26	800.47	0.00	1411424.02	3212111.71	40.460258	-104.737719
	4900.00	11.60	112.54	4811.93	834.87	-339.97	819.04	0.00	1411416.48	3212130.34	40.460237	-104.737653
	5000.00	11.60	112.54	4909.89	853.79	-347.68	837.60	0.00	1411408.93	3212148.97	40.460216	-104.737586
	5100.00	11.60	112.54	5007.85	872.72	-355.38	856.17	0.00	1411401.38	3212167.61	40.460194	-104.737519
	5200.00	11.60	112.54	5105.80	891.65	-363.09	874.74	0.00	1411393.83	3212186.24	40.460173	-104.737453
	5300.00	11.60	112.54	5203.76	910.57	-370.80	893.31	0.00	1411386.28	3212204.87	40.460152	-104.737386
	5400.00	11.60	112.54	5301.72	929.50	-378.50	911.88	0.00	1411378.74	3212223.50	40.460131	-104.737319
	5500.00	11.60	112.54	5399.68	948.43	-386.21	930.44	0.00	1411371.19	3212242.14	40.460110	-104.737252
	5600.00	11.60	112.54	5497.64	967.35	-393.92	949.01	0.00	1411363.64	3212260.77	40.460089	-104.737186
	5700.00	11.60	112.54	5595.60	986.28	-401.63	967.58	0.00	1411356.09	3212279.40	40.460068	-104.737119
	5800.00	11.60	112.54	5693.55	1005.21	-409.33	986.15	0.00	1411348.55	3212298.03	40.460046	-104.737052
	5900.00	11.60	112.54	5791.51	1024.13	-417.04	1004.71	0.00	1411341.00	3212316.67	40.460025	-104.736985
	6000.00	11.60	112.54	5889.47	1043.06	-424.75	1023.28	0.00	1411333.45	3212335.30	40.460004	-104.736919
	6100.00	11.60	112.54	5987.43	1061.99	-432.45	1041.85	0.00	1411325.90	3212353.93	40.459983	-104.736852
	6200.00	11.60	112.54	6085.39	1080.91	-440.16	1060.42	0.00	1411318.36	3212372.56	40.459962	-104.736785
	6300.00	11.60	112.54	6183.35	1099.84	-447.87	1078.99	0.00	1411310.81	3212391.20	40.459941	-104.736719
	6400.00	11.60	112.54	6281.30	1118.77	-455.58	1097.55	0.00	1411303.26	3212409.83	40.459919	-104.736652
	6500.00	11.60	112.54	6379.26	1137.69	-463.28	1116.12	0.00	1411295.71	3212428.46	40.459898	-104.736585
KOP, Build/Turn 9 DLS	6556.79	11.60	112.54	6434.89	1148.44	-467.66	1126.67	0.00	1411291.43	3212439.04	40.459886	-104.736547
	6600.00	15.26	106.88	6476.92	1158.05	-470.98	1136.12	9.00	1411288.19	3212448.53	40.459877	-104.736513
	6700.00	24.01	100.42	6571.02	1191.05	-478.50	1168.79	9.00	1411280.95	3212481.26	40.459857	-104.736396
	6800.00	32.89	97.30	6658.86	1238.39	-485.64	1215.83	9.00	1411274.21	3212528.35	40.459837	-104.736227
	6900.00	41.81	95.39	6738.28	1298.88	-492.23	1276.07	9.00	1411268.14	3212588.65	40.459819	-104.736010
	7000.00	50.76	94.05	6807.31	1371.05	-498.11	1348.04	9.00	1411262.87	3212660.66	40.459803	-104

Comments	MD (ft)	Incl (°)	Azim True (°)	TVD (ft)	VSEC (ft)	NS (ft)	EW (ft)	DLS (°/100ft)	Northing (ftUS)	Easting (ftUS)	Latitude (°)	Longitude (°)
Landing Point, Hold to TD	7300.00	77.66	91.41	6936.64	1638.67	-510.15	1615.39	9.00	1411253.13	3212928.09	40.459770	-104.734791
	7400.00	86.63	90.70	6950.29	1737.58	-511.96	1714.33	9.00	1411252.16	3213027.04	40.459765	-104.734435
	7439.56	90.18	90.42	6951.39	1777.09	-512.35	1753.87	9.00	1411252.12	3213066.58	40.459764	-104.734293
	7500.00	90.18	90.42	6951.20	1837.47	-512.79	1814.31	0.00	1411252.19	3213127.02	40.459762	-104.734076
	7600.00	90.18	90.42	6950.88	1937.38	-513.53	1914.30	0.00	1411252.30	3213227.01	40.459760	-104.733717
	7700.00	90.18	90.42	6950.56	2037.29	-514.27	2014.30	0.00	1411252.42	3213327.01	40.459758	-104.733357
	7800.00	90.18	90.42	6950.23	2137.20	-515.01	2114.30	0.00	1411252.54	3213427.00	40.459756	-104.732998
	7900.00	90.18	90.42	6949.91	2237.11	-515.75	2214.29	0.00	1411252.65	3213527.00	40.459754	-104.732639
	8000.00	90.18	90.42	6949.59	2337.03	-516.49	2314.29	0.00	1411252.77	3213626.99	40.459752	-104.732279
	8100.00	90.18	90.42	6949.27	2436.94	-517.23	2414.29	0.00	1411252.88	3213726.99	40.459750	-104.731920
	8200.00	90.18	90.42	6948.95	2536.85	-517.97	2514.28	0.00	1411253.00	3213826.99	40.459748	-104.731561
	8300.00	90.18	90.42	6948.63	2636.76	-518.71	2614.28	0.00	1411253.12	3213926.98	40.459746	-104.731201
	8400.00	90.18	90.42	6948.31	2736.67	-519.45	2714.28	0.00	1411253.23	3214026.98	40.459744	-104.730842
	8500.00	90.18	90.42	6947.99	2836.58	-520.19	2814.27	0.00	1411253.35	3214126.97	40.459742	-104.730483
	8600.00	90.18	90.42	6947.67	2936.49	-520.93	2914.27	0.00	1411253.47	3214226.97	40.459740	-104.730123
	8700.00	90.18	90.42	6947.34	3036.40	-521.67	3014.27	0.00	1411253.58	3214326.96	40.459738	-104.729764
	8800.00	90.18	90.42	6947.02	3136.31	-522.41	3114.26	0.00	1411253.70	3214426.96	40.459736	-104.729405
	8900.00	90.18	90.42	6946.70	3236.22	-523.15	3214.26	0.00	1411253.82	3214526.95	40.459733	-104.729045
	9000.00	90.18	90.42	6946.38	3336.13	-523.89	3314.26	0.00	1411253.93	3214626.95	40.459731	-104.728686
	9100.00	90.18	90.42	6946.06	3436.04	-524.63	3414.25	0.00	1411254.05	3214726.95	40.459729	-104.728327
	9200.00	90.18	90.42	6945.74	3535.95	-525.37	3514.25	0.00	1411254.16	3214826.94	40.459727	-104.727967
	9300.00	90.18	90.42	6945.42	3635.86	-526.11	3614.25	0.00	1411254.28	3214926.94	40.459725	-104.727608
	9400.00	90.18	90.42	6945.10	3735.78	-526.85	3714.24	0.00	1411254.40	3215026.93	40.459723	-104.727249
	9500.00	90.18	90.42	6944.78	3835.69	-527.59	3814.24	0.00	1411254.51	3215126.93	40.459721	-104.726889
	9600.00	90.18	90.42	6944.45	3935.60	-528.33	3914.24	0.00	1411254.63	3215226.92	40.459719	-104.726530
	9700.00	90.18	90.42	6944.13	4035.51	-529.07	4014.23	0.00	1411254.75	3215326.92	40.459717	-104.726171
	9800.00	90.18	90.42	6943.81	4135.42	-529.81	4114.23	0.00	1411254.86	3215426.91	40.459715	-104.725811
	9900.00	90.18	90.42	6943.49	4235.33	-530.55	4214.23	0.00	1411254.98	3215526.91	40.459713	-104.725452
	10000.00	90.18	90.42	6943.17	4335.24	-531.29	4314.22	0.00	1411255.10	3215626.91	40.459711	-104.725093
	10100.00	90.18	90.42	6942.85	4435.15	-532.03	4414.22	0.00	1411255.21	3215726.90	40.459709	-104.724733
	10200.00	90.18	90.42	6942.53	4535.06	-532.77	4514.22	0.00	1411255.33	3215826.90	40.459707	-104.724374
	10300.00	90.18	90.42	6942.21	4634.97	-533.51	4614.21	0.00	1411255.44	3215926.89	40.459704	-104.724015
	10400.00	90.18	90.42	6941.88	4734.88	-534.25	4714.21	0.00	1411255.56	3216026.89	40.459702	-104.723655
	10500.00	90.18	90.42	6941.56	4834.79	-534.99	4814.21	0.00	1411255.68	3216126.88	40.459700	-104.723296
	10600.00	90.18	90.42	6941.24	4934.70	-535.73	4914.21	0.00	1411255.79	3216226.88	40.459698	-104.722937
	10700.00	90.18	90.42	6940.92	5034.61	-536.47	5014.20	0.00	1411255.91	3216326.87	40.459696	-104.722577
	10800.00	90.18	90.42	6940.60	5134.53	-537.21	5114.20	0.00	1411256.03	3216426.87	40.459694	-104.722218
	10900.00	90.18	90.42	6940.28	5234.44	-537.95	5214.20	0.00	1411256.14	3216526.87	40.459692	-104.721858
	11000.00	90.18	90.42	6939.96	5334.35	-538.69	5314.19	0.00	1411256.26	3216626.86	40.459690	-104.721499
	11100.00	90.18	90.42	6939.64	5434.26	-539.43	5414.19	0.00	1411256.38	3216726.86	40.459688	-104.721140
	11200.00	90.18	90.42	6939.32	5534.17	-540.17	5514.19	0.00	1411256.49	3216826.85	40.459686	-104.720780
	11300.00	90.18	90.42	6938.99	5634.08	-540.91	5614.18	0.00	1411256.61	3216926.85	40.459684	-104.720421
	11400.00	90.18	90.42	6938.67	5733.99	-541.65	5714.18	0.00	1411256.72	3217026.84	40.459681	-104.720062
	11500.00	90.18	90.42	6938.35	5833.90	-542.39	5814.18	0.00	1411256.84	3217126.84	40.459679	-104.719702
	11600.00	90.18	90.42	6938.03	5933.81	-543.13	5914.17	0.00	1411256.96	3217226.83	40.459677	-104.719343
	11700.00	90.18	90.42	6937.71	6033.72	-543.87	6014.17	0.00	1411257.07	3217326.83	40.459675	-104.718984
	11800.00	90.18	90.42	6937.39	6133.63	-544.61	6114.17	0.00	1411257.19	3217426.83	40.459673	-104.718624
	11900.00	90.18	90.42	6937.07	6233.54	-545.35	6214.16	0.00	1411257.31	3217526.82	40.459671	-104.718265
	12000.00	90.18	90.42	6936.75	6333.45	-546.09	6314.16	0.00	1411257.42	3217626.82	40.459669	-104.717906
	12100.00	90.18	90.42	6936.43	6433.37	-546.83	6414.16	0.00	1411257.54	3217726.81	40.459667	-104.717546
12200.00	90.18	90.42	6936.10	6533.28	-547.57	6514.15	0.00	1411257.66	3217826.81	40.459665	-104.717187	
12300.00	90.18	90.42	6935.78	6633.19	-548.31	6614.15	0.00	1411257.77	3217926.80	40.459663	-104.716828	
12400.00	90.18	90.42	6935.46	6733.10	-549.05	6714.15	0.00	1411257.89	3218026.80	40.459660	-104.716468	
12500.00	90.18	90.42	6935.14	6833.01	-549.79	6814.14	0.00	1411258.00	3218126.80	40.459658	-104.716109	
12600.00	90.18	90.42	6934.82	6932.92	-550.53	6914.14	0.00	1411258.12	3218226.79	40.459656	-104.715750	
12700.00	90.18	90.42	6934.50	7032.83	-551.27	7014.14	0.00	1411258.24	3218326.79	40.459654	-104.715390	
12800.00	90.18	90.42	6934.18	7132.74	-552.01	7114.13	0.00	1411258.35	3218426.78	40.459652	-104.715031	
12900.00	90.18	90.42	6933.86	7232.65	-552.75	7214.13	0.00	1411258.47	3218526.78	40.459650	-104.714672	
13000.00	90.18	90.42	6933.54	7332.56	-553.49	7314.13	0.00	1411258.59	3218626.77	40.459648	-104.714312	
13100.00	90.18	90.42	6933.21	7432.47	-554.23	7414.12	0.00	1411258.70	3218726.77	40.459646	-104.713953	
13200.00	90.18	90.42	6932.89	7532.38	-554.97	7514.12	0.00	1411258.82	3218826.76	40.459644	-104.713594	
13300.00	90.18	90.42	6932.57	7632.29	-555.71	7614.12	0.00	1411258.94	3218926.76	40.459641	-104.713234	
13400.00	90.18	90.42	6932.25	7732.20	-556.45	7714.11	0.00	1411259.05	3219026.76	40.459639	-104.712875	
13500.00	90.18	90.42	6931.93	7832.12	-557.19	7814.11	0.00	1411259.17	3219126.75	40.459637	-104.712515	
13600.00	90.18	90.42	6931.61	7932.03	-557.93	7914.11	0.00	1411259.28	3219226.75	40.459635	-104.712156	
13700.00	90.18	90.42	6931.29	8031.94	-558.67	8014.10	0.00	1411259.40	3219326.74	40.459633	-104.711797	
13800.00	90.18	90.42	6930.97	8131.85	-559.41	8114.10	0.00	1411259.52	3219426.74	40.459631	-104.711438	
13900.00	90.18	90.42	6930.64									

Comments	MD (ft)	Incl (°)	Azim True (°)	TVD (ft)	VSEC (ft)	NS (ft)	EW (ft)	DLS (°/100ft)	Northing (ftUS)	Easting (ftUS)	Latitude (°)	Longitude (°)
----------	------------	-------------	------------------	-------------	--------------	------------	------------	------------------	--------------------	-------------------	-----------------	------------------

Survey Type: Def Plan

Survey Error Model: ISCWSA Rev 0 \*\*\* 3-D 95.000% Confidence 2.7955 sigma  
Survey Program:

Description	Part	MD From (ft)	MD To (ft)	EOU Freq (ft)	Hole Size	Casing Diameter (in)	Expected Max Inclination (deg)	Survey Tool Type	Borehole / Survey
	1	0.000	4.000	1/100.000	13.500	9.625		NAL_MWD_IFR1-Depth Only	Original Hole / Seeley 108-14N-30B-L R0 mdv 01Aug19
	1	4.000	1800.000	1/100.000	13.500	9.625		NAL_MWD_IFR1	Original Hole / Seeley 108-14N-30B-L R0 mdv 01Aug19
	1	1800.000	17526.124	1/100.000	8.500	5.500		NAL_MWD_IFR1+MS	Original Hole / Seeley 108-14N-30B-L R0 mdv 01Aug19