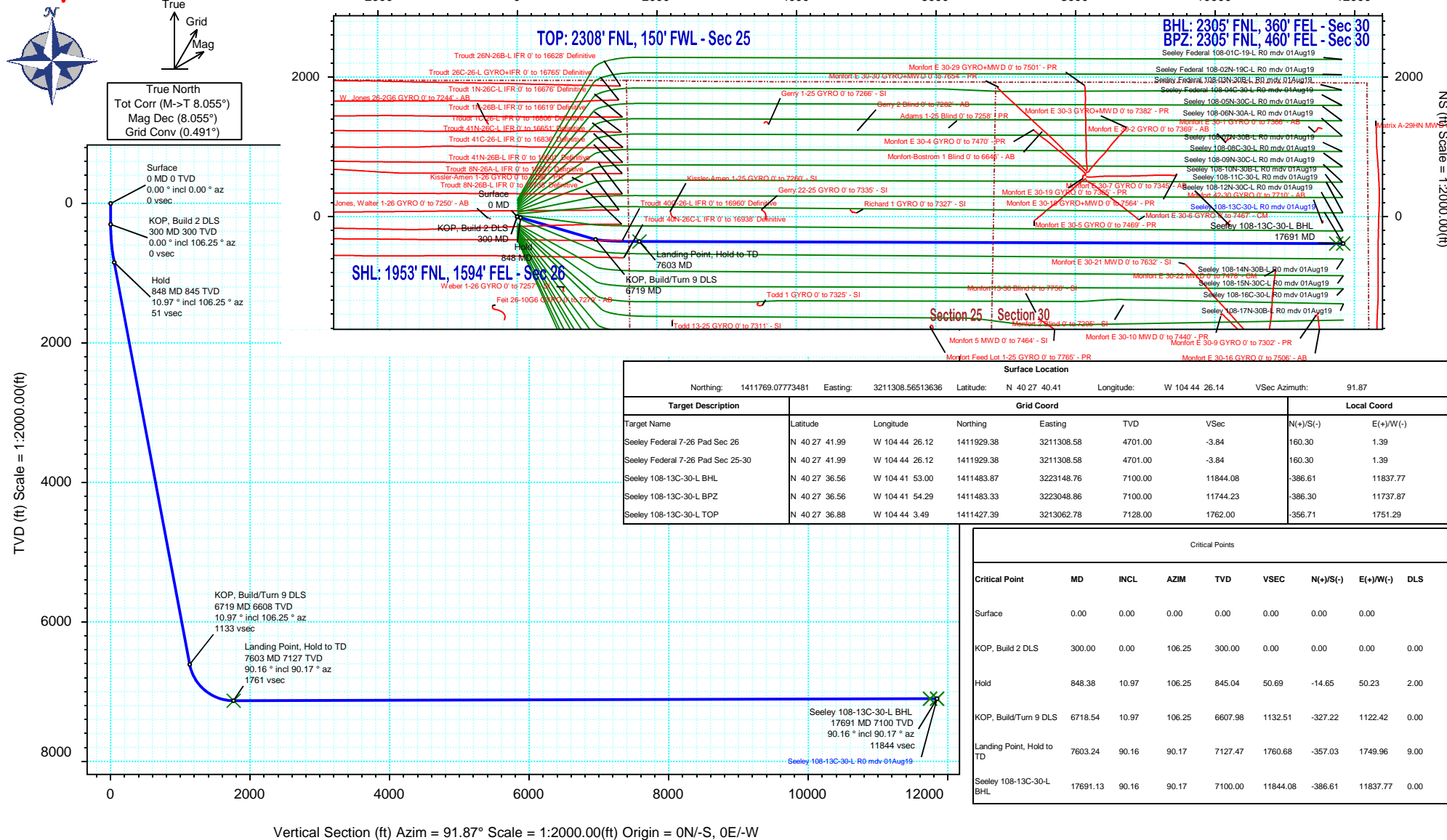


Borehole:				Well:				Field:				Structure:											
Original Hole				Seeley 108-13C-30-L				CO, Weld County (NAD 83 NZ) - SRC				SRC Energy 26-06N-66W (Chalk-Seeley Federal 7-26 Pad DSU 108)											
Gravity & Magnetic Parameters								Surface Location								Miscellaneous							
Model: HDGM 2019 Dip: 66.847° Date: 31-Jul-2019								NAD83 Colorado State Plane, Northern Zone, US Feet								Slot: Seeley 108-13C-30-L TVD Ref: KB 4ft(4701ft above MSL)							
MagDec: 8.055° FS: 52216.293nT Gravity FS: 999.049mgm (9.80665 Based)								Lat: N 40 27 40.41 Northing: 1411769.08ftUS Grid Conv: 0.4907°								Plan: Seeley 108-13C-30-L R0 mdv 01Aug19							
								Lon: W 104 44 26.14 Easting: 3211308.57ftUS Scale Fact: 0.99996358															

Proposal





Seeley 108-13C-30-L R0 mdv 01Aug19 Proposal Geodetic Report

(Def Plan)

Report Date: August 27, 2019 - 09:32 AM
Client: SRC Energy
Field: CO, Weld County (NAD 83 NZ) - SRC
Structure / Slot: SRC Energy 26-06N-66W (Chalk-Seeley Federal 7-26 Pad DSU 108) / Seeley 108-13C-30-L
Well: Seeley 108-13C-30-L
Borehole: Original Hole
UWI / API#: Unknown / 05-123-48883
Survey Name: Seeley 108-13C-30-L R0 mdv 01Aug19
Survey Date: July 18, 2019
Tort / AHD / DDI / ERD Ratio: 90.590 ° / 11885.903 ft / 6.427 / 1.668
Coordinate Reference System: NAD83 Colorado State Plane, Northern Zone, US Feet
Location Lat / Long: N 40° 27' 40.40640", W 104° 44' 26.14200"
Location Grid N/E Y/X: N 1411769.078 ftUS, E 3211308.565 ftUS
CRS Grid Convergence Angle: 0.4907 °
Grid Scale Factor: 0.99996358
Version / Patch: 2.10.760.0

Survey / DLS Computation: Minimum Curvature / Lubinski
Vertical Section Azimuth: 91.871 ° (True North)
Vertical Section Origin: 0.000 ft, 0.000 ft
TVD Reference Datum: KB 4ft
TVD Reference Elevation: 4701.000 ft above MSL
Seabed / Ground Elevation: 4697.000 ft above MSL
Magnetic Declination: 8.055 °
Total Gravity Field Strength: 999.0490mgn (9.80665 Based)
Gravity Model: GARM
Total Magnetic Field Strength: 52216.293 nT
Magnetic Dip Angle: 66.847 °
Declination Date: July 31, 2019
Magnetic Declination Model: HDGM 2019
North Reference: True North
Grid Convergence Used: 0.0000 °
Total Corr Mag North->True North: 8.0554 °
Local Coord Referenced To: Well Head

Comments	MD (ft)	Incl (°)	Azim True (°)	TVD (ft)	VSEC (ft)	NS (ft)	EW (ft)	DLS (°/100ft)	Northing (ftUS)	Easting (ftUS)	Latitude (°)	Longitude (°)
Surface	0.00	0.00	0.00	0.00	0.00	0.00	0.00	N/A	1411769.08	3211308.57	40.461224	-104.740595
	100.00	0.00	106.25	100.00	0.00	0.00	0.00	0.00	1411769.08	3211308.57	40.461224	-104.740595
	200.00	0.00	106.25	200.00	0.00	0.00	0.00	0.00	1411769.08	3211308.57	40.461224	-104.740595
KOP, Build 2 DLS	300.00	0.00	106.25	300.00	0.00	0.00	0.00	0.00	1411769.08	3211308.57	40.461224	-104.740595
	400.00	2.00	106.25	399.98	1.69	-0.49	1.68	2.00	1411768.60	3211310.24	40.461223	-104.740589
	500.00	4.00	106.25	499.84	6.76	-1.95	6.70	2.00	1411767.18	3211315.28	40.461219	-104.740571
	600.00	6.00	106.25	599.45	15.20	-4.39	15.07	2.00	1411764.81	3211323.67	40.461212	-104.740541
	700.00	8.00	106.25	698.70	27.01	-7.80	26.77	2.00	1411761.50	3211335.40	40.461203	-104.740499
	800.00	10.00	106.25	797.47	42.16	-12.18	41.78	2.00	1411757.26	3211350.45	40.461191	-104.740445
Hold	848.38	10.97	106.25	845.04	50.69	-14.65	50.23	2.00	1411754.86	3211358.92	40.461184	-104.740414
	900.00	10.97	106.25	895.71	60.20	-17.39	59.66	0.00	1411752.20	3211368.37	40.461176	-104.740381
	1000.00	10.97	106.25	993.89	78.63	-22.72	77.93	0.00	1411747.03	3211386.68	40.461162	-104.740315
	1100.00	10.97	106.25	1092.06	97.06	-28.04	96.19	0.00	1411741.86	3211404.99	40.461147	-104.740249
	1200.00	10.97	106.25	1190.23	115.49	-33.37	114.46	0.00	1411736.69	3211423.30	40.461132	-104.740184
	1300.00	10.97	106.25	1288.41	133.92	-38.69	132.72	0.00	1411731.52	3211441.61	40.461118	-104.740118
	1400.00	10.97	106.25	1386.58	152.34	-44.02	150.99	0.00	1411726.36	3211459.92	40.461103	-104.740052
	1500.00	10.97	106.25	1484.76	170.77	-49.34	169.25	0.00	1411721.19	3211478.23	40.461089	-104.739987
	1600.00	10.97	106.25	1582.93	189.20	-54.67	187.52	0.00	1411716.02	3211496.54	40.461074	-104.739921
	1700.00	10.97	106.25	1681.10	207.63	-59.99	205.78	0.00	1411710.85	3211514.85	40.461059	-104.739855
	1800.00	10.97	106.25	1779.28	226.06	-65.32	224.05	0.00	1411705.68	3211533.16	40.461045	-104.739790
	1900.00	10.97	106.25	1877.45	244.49	-70.64	242.31	0.00	1411700.52	3211551.47	40.461030	-104.739724
	2000.00	10.97	106.25	1975.62	262.92	-75.97	260.58	0.00	1411695.35	3211569.77	40.461015	-104.739659
	2100.00	10.97	106.25	2073.80	281.35	-81.29	278.84	0.00	1411690.18	3211588.08	40.461001	-104.739593
	2200.00	10.97	106.25	2171.97	299.78	-86.62	297.11	0.00	1411685.01	3211606.39	40.460986	-104.739527
	2300.00	10.97	106.25	2270.14	318.21	-91.94	315.37	0.00	1411679.84	3211624.70	40.460972	-104.739462
	2400.00	10.97	106.25	2368.32	336.64	-97.27	333.64	0.00	1411674.68	3211643.01	40.460957	-104.739396
	2500.00	10.97	106.25	2466.49	355.07	-102.59	351.90	0.00	1411669.51	3211661.32	40.460942	-104.739330
	2600.00	10.97	106.25	2564.66	373.49	-107.92	370.17	0.00	1411664.34	3211679.63	40.460928	-104.739265
	2700.00	10.97	106.25	2662.84	391.92	-113.24	388.43	0.00	1411659.17	3211697.94	40.460913	-104.739199
	2800.00	10.97	106.25	2761.01	410.35	-118.57	406.70	0.00	1411654.00	3211716.25	40.460899	-104.739133
	2900.00	10.97	106.25	2859.18	428.78	-123.89	424.96	0.00	1411648.83	3211734.56	40.460884	-104.739068
	3000.00	10.97	106.25	2957.36	447.21	-129.22	443.23	0.00	1411643.67	3211752.87	40.460869	-104.739002
	3100.00	10.97	106.25	3055.53	465.64	-134.54	461.49	0.00	1411638.50	3211771.18	40.460855	-104.738937
	3200.00	10.97	106.25	3153.70	484.07	-139.87	479.76	0.00	1411633.33	3211789.49	40.460840	-104.738871
	3300.00	10.97	106.25	3251.88	502.50	-145.19	498.02	0.00	1411628.16	3211807.80	40.460825	-104.738805
	3400.00	10.97	106.25	3350.05	520.93	-150.52	516.29	0.00	1411622.99	3211826.11	40.460811	-104.738740
	3500.00	10.97	106.25	3448.22	539.36	-155.84	534.56	0.00	1411617.83	3211844.41	40.460796	-104.738674
	3600.00	10.97	106.25	3546.40	557.79	-161.17	552.82	0.00	1411612.66	3211862.72	40.460782	-104.738608
	3700.00	10.97	106.25	3644.57	576.22	-166.49	571.09	0.00	1411607.49	3211881.03	40.460767	-104.738543
	3800.00	10.97	106.25	3742.75	594.64	-171.82	589.35	0.00	1411602.32	3211899.34	40.460752	-104.738477
	3900.00	10.97	106.25	3840.92	613.07	-177.14	607.62	0.00	1411597.15	3211917.65	40.460738	-104.738411
	4000.00	10.97	106.25	3939.09	631.50	-182.46	625.88	0.00	1411591.99	3211935.96	40.460723	-104.738346
	4100.00	10.97	106.25	4037.27	649.93	-187.79	644.15	0.00	1411586.82	3211954.27	40.460709	-104.738280
	4200.00	10.97	106.25	4135.44	668.36	-193.11	662.41	0.00	1411581.65	3211972.58	40.460694	-104.738215
	4300.00	10.97	106.25	4233.61	686.79	-198.44	680.68	0.00	1411576.48	3211990.89	40.460679	-104.738149
	4400.00	10.97	106.25	4331.79	705.22	-203.76	698.94	0.00	1411571.31	3212009.20	40.460665	-104.738083
	4500.00	10.97	106.25	4429.96	723.65	-209.09	717.21	0.00	1411566.15	3212027.51	40.460650	-104.738018
	4600.00	10.97	106.25	4528.13	742.08	-214.41	735.47	0.00	1411560.98	3212045.82	40.460635	-104.737952
	4700.00	10.97	106.25	4626.31	760.51	-219.74	753.74	0.00	1411555.81	3212064.13	40.460621	-104.737886
	4800.00	10.97	106.25	4724.48	778.94	-225.06	772.00	0.00	1411550.64	3212082.44	40.460606	-104.737821
	4900.00	10.97	106.25	4822.65	797.37	-230.39	790.27	0.00	1411545.47	3212100.75	40.460592	-104.737755
	5000.00	10.97	106.25	4920.83	815.79	-235.71	808.53	0.00	1411540.31	3212119.05	40.460577	-104.737689
	5100.00	10.97	106.25	5019.00	834.22	-241.04	826.80	0.00	1411535.14	3212137.36	40.460562	-104.737624
	5200.00	10.97	106.25	5117.17	852.65	-246.36	845.06	0.00	1411529.97	3212155.67	40.460548	-104.737558
	5300.00	10.97	106.25	5215.35	871.08	-251.69	863.33	0.00	1411524.80	3212173.98	40.460533	-104.737493
	5400.00	10.97	106.25	5313.52	889.51	-257.01	881.59	0.00	1411519.63	3212192.29	40.460518	-104.737427
	5500.00	10.97	106.25	5411.69	907.94	-262.34	899.86	0.00	1411514.47	3212210.60	40.460504	-104.737361
	5600.00	10.97	106.25	5509.87	926.37	-267.66	918.12	0.00	1411509.30	3212228.91	40.460489	-104.737296
	5700.00	10.97	106.25	5608.04	944.80	-272.99	936.39	0.00	1411504.13	3212247.22	40.460475	-104.737230
	5800.00	10.97	106.25	5706.21	963.23	-278.31	954.65	0.00	1411498.96	3212265.53	40.460460	-104.737164
	5900.00	10.97	106.25	5804.39	981.66	-283.64	972.92	0.00	1411493.79	3212283.84	40.460445	-104.737099
	6000.00	10.97	106.25	5902.56	1000.09	-288.96	991.18	0.00	1411488.62	3212302.15	40.460431	-104.737033
	6100.00	10.97	106.25	6000.74	1018.52	-294.29	1009.45	0.00	1411483.46	3212320.46	40.460416	-104.736967
	6200.00	10.97	106.25	6098.91	1036.94	-299.61	1027.71	0.00	1411478.29	3212338.77	40.460402	-104.736902
	6300.00	10.97	106.25	6197.08	1055.37	-304.94	1045.98	0.00	1411473.12	3212357.08	40.460387	-104.736836
	6400.00	10.97	106.25	6295.26	1073.80	-310.26	1064.24	0.00	1411467.95	3212375.39	40.460372	-104.736771
	6500.00	10.97	106.25	6393.43	1092.23	-315.59	1082.51	0.00	1411462.78	3212393.69	40.460358	-104.736705
	6600.00	10.97	106.25	6491.60	1110.66	-320.91	1100.77	0.00	1411457.62	3212412.00	40.460343	-104.736639
	6700.00	10.97	106.25	6589.78	1129.09	-326.24	1119.04	0.00	1411452.45	3212430.31	40.460328	-104.736574
KOP, Build/Turn 9 DLS	6718.54	10.97	106.25	6607.98	1132.51	-327.22	1122.42	0.00	1411451.49	3212433.71	40.460326	-104.736561
	6800.00	18.12	99.62	6686.78	1152.59	-331.51	1142.38	9.00	1411447.37	3212453.70	40.460314	-104.736490
	6900.00	27.03	96.22	6779.03	1190.73	-336.58	1180.38	9.00	1411442.63	3212491.73	40.460300	-104.736353
	7000.00	35.98	94.42	6864.21	1242.84	-341.31	1232.36	9.00	1411438.34	3212543.75	40.460287	-104.736166
	7100.00	44.95	93.26	6940.21	1307.63	-345.59	1292					

Comments	MD (ft)	Incl (°)	Azim True (°)	TVD (ft)	VSEC (ft)	NS (ft)	EW (ft)	DLS (°/100ft)	Northing (ftUS)	Easting (ftUS)	Latitude (°)	Longitude (°)
Landing Point, Hold to TD	7300.00	62.91	91.75	7057.50	1468.61	-352.38	1457.88	9.00	1411429.21	3212769.36	40.460257	-104.735356
	7400.00	71.89	91.18	7095.89	1560.83	-354.73	1550.08	9.00	1411427.65	3212861.57	40.460250	-104.735025
	7500.00	80.88	90.67	7119.41	1657.91	-356.29	1647.16	9.00	1411426.92	3212958.65	40.460246	-104.734676
	7600.00	89.87	90.18	7127.47	1757.45	-357.02	1746.73	9.00	1411427.04	3213058.22	40.460244	-104.734318
	7603.24	90.16	90.17	7127.47	1760.68	-357.03	1749.96	9.00	1411427.06	3213061.45	40.460244	-104.734306
	7700.00	90.16	90.17	7127.20	1857.40	-357.32	1846.73	0.00	1411427.60	3213158.21	40.460243	-104.733959
	7800.00	90.16	90.17	7126.93	1957.36	-357.61	1946.72	0.00	1411428.16	3213258.21	40.460242	-104.733599
	7900.00	90.16	90.17	7126.66	2057.32	-357.91	2046.72	0.00	1411428.73	3213358.20	40.460241	-104.733240
	8000.00	90.16	90.17	7126.39	2157.27	-358.20	2146.72	0.00	1411429.29	3213458.19	40.460241	-104.732881
	8100.00	90.16	90.17	7126.11	2257.23	-358.49	2246.72	0.00	1411429.85	3213558.19	40.460240	-104.732521
	8200.00	90.16	90.17	7125.84	2357.18	-358.78	2346.72	0.00	1411430.42	3213658.18	40.460239	-104.732162
	8300.00	90.16	90.17	7125.57	2457.14	-359.08	2446.72	0.00	1411430.98	3213758.18	40.460238	-104.731802
	8400.00	90.16	90.17	7125.30	2557.09	-359.37	2546.72	0.00	1411431.54	3213858.17	40.460237	-104.731443
	8500.00	90.16	90.17	7125.02	2657.05	-359.66	2646.72	0.00	1411432.11	3213958.17	40.460236	-104.731084
	8600.00	90.16	90.17	7124.75	2757.00	-359.96	2746.72	0.00	1411432.67	3214058.16	40.460236	-104.730724
	8700.00	90.16	90.17	7124.48	2856.96	-360.25	2846.72	0.00	1411433.23	3214158.15	40.460235	-104.730365
	8800.00	90.16	90.17	7124.21	2956.92	-360.54	2946.72	0.00	1411433.80	3214258.15	40.460234	-104.730006
	8900.00	90.16	90.17	7123.94	3056.87	-360.84	3046.72	0.00	1411434.36	3214358.14	40.460233	-104.729646
	9000.00	90.16	90.17	7123.66	3156.83	-361.13	3146.71	0.00	1411434.92	3214458.14	40.460232	-104.729287
	9100.00	90.16	90.17	7123.39	3256.78	-361.42	3246.71	0.00	1411435.48	3214558.13	40.460231	-104.728928
	9200.00	90.16	90.17	7123.12	3356.74	-361.72	3346.71	0.00	1411436.05	3214658.12	40.460231	-104.728568
	9300.00	90.16	90.17	7122.85	3456.69	-362.01	3446.71	0.00	1411436.61	3214758.12	40.460230	-104.728209
	9400.00	90.16	90.17	7122.57	3556.65	-362.30	3546.71	0.00	1411437.17	3214858.11	40.460229	-104.727850
	9500.00	90.16	90.17	7122.30	3656.60	-362.60	3646.71	0.00	1411437.74	3214958.11	40.460228	-104.727490
	9600.00	90.16	90.17	7122.03	3756.56	-362.89	3746.71	0.00	1411438.30	3215058.10	40.460227	-104.727131
	9700.00	90.16	90.17	7121.76	3856.51	-363.18	3846.71	0.00	1411438.86	3215158.10	40.460226	-104.726772
	9800.00	90.16	90.17	7121.49	3956.47	-363.48	3946.71	0.00	1411439.43	3215258.09	40.460225	-104.726412
	9900.00	90.16	90.17	7121.21	4056.43	-363.77	4046.71	0.00	1411439.99	3215358.08	40.460225	-104.726053
	10000.00	90.16	90.17	7120.94	4156.38	-364.06	4146.71	0.00	1411440.55	3215458.08	40.460224	-104.725693
	10100.00	90.16	90.17	7120.67	4256.34	-364.36	4246.71	0.00	1411441.12	3215558.07	40.460223	-104.725334
	10200.00	90.16	90.17	7120.40	4356.29	-364.65	4346.71	0.00	1411441.68	3215658.07	40.460222	-104.724975
	10300.00	90.16	90.17	7120.12	4456.25	-364.94	4446.70	0.00	1411442.24	3215758.06	40.460221	-104.724615
	10400.00	90.16	90.17	7119.85	4556.20	-365.24	4546.70	0.00	1411442.81	3215858.06	40.460220	-104.724256
	10500.00	90.16	90.17	7119.58	4656.16	-365.53	4646.70	0.00	1411443.37	3215958.05	40.460219	-104.723897
	10600.00	90.16	90.17	7119.31	4756.11	-365.82	4746.70	0.00	1411443.93	3216058.04	40.460219	-104.723537
	10700.00	90.16	90.17	7119.03	4856.07	-366.12	4846.70	0.00	1411444.49	3216158.04	40.460218	-104.723178
	10800.00	90.16	90.17	7118.76	4956.02	-366.41	4946.70	0.00	1411445.06	3216258.03	40.460217	-104.722819
	10900.00	90.16	90.17	7118.49	5055.98	-366.70	5046.70	0.00	1411445.62	3216358.03	40.460216	-104.722459
	11000.00	90.16	90.17	7118.22	5155.94	-366.99	5146.70	0.00	1411446.18	3216458.02	40.460215	-104.722100
	11100.00	90.16	90.17	7117.95	5255.89	-367.29	5246.70	0.00	1411446.75	3216558.01	40.460214	-104.721741
	11200.00	90.16	90.17	7117.67	5355.85	-367.58	5346.70	0.00	1411447.31	3216658.01	40.460213	-104.721381
	11300.00	90.16	90.17	7117.40	5455.80	-367.87	5446.70	0.00	1411447.87	3216758.00	40.460213	-104.721022
	11400.00	90.16	90.17	7117.13	5555.76	-368.17	5546.70	0.00	1411448.44	3216858.00	40.460212	-104.720662
	11500.00	90.16	90.17	7116.86	5655.71	-368.46	5646.69	0.00	1411449.00	3216957.99	40.460211	-104.720303
	11600.00	90.16	90.17	7116.58	5755.67	-368.75	5746.69	0.00	1411449.56	3217057.99	40.460210	-104.719944
	11700.00	90.16	90.17	7116.31	5855.62	-369.05	5846.69	0.00	1411450.13	3217157.98	40.460209	-104.719584
	11800.00	90.16	90.17	7116.04	5955.58	-369.34	5946.69	0.00	1411450.69	3217257.97	40.460208	-104.719225
	11900.00	90.16	90.17	7115.77	6055.54	-369.63	6046.69	0.00	1411451.25	3217357.97	40.460207	-104.718866
	12000.00	90.16	90.17	7115.50	6155.49	-369.93	6146.69	0.00	1411451.82	3217457.96	40.460206	-104.718506
	12100.00	90.16	90.17	7115.22	6255.45	-370.22	6246.69	0.00	1411452.38	3217557.96	40.460206	-104.718147
12200.00	90.16	90.17	7114.95	6355.40	-370.51	6346.69	0.00	1411452.94	3217657.95	40.460205	-104.717788	
12300.00	90.16	90.17	7114.68	6455.36	-370.81	6446.69	0.00	1411453.51	3217757.94	40.460204	-104.717428	
12400.00	90.16	90.17	7114.41	6555.31	-371.10	6546.69	0.00	1411454.07	3217857.94	40.460203	-104.717069	
12500.00	90.16	90.17	7114.13	6655.27	-371.39	6646.69	0.00	1411454.63	3217957.93	40.460202	-104.716710	
12600.00	90.16	90.17	7113.86	6755.22	-371.69	6746.69	0.00	1411455.19	3218057.93	40.460201	-104.716350	
12700.00	90.16	90.17	7113.59	6855.18	-371.98	6846.69	0.00	1411455.76	3218157.92	40.460200	-104.715991	
12800.00	90.16	90.17	7113.32	6955.13	-372.27	6946.68	0.00	1411456.32	3218257.92	40.460199	-104.715632	
12900.00	90.16	90.17	7113.04	7055.09	-372.57	7046.68	0.00	1411456.88	3218357.91	40.460199	-104.715272	
13000.00	90.16	90.17	7112.77	7155.05	-372.86	7146.68	0.00	1411457.45	3218457.90	40.460198	-104.714913	
13100.00	90.16	90.17	7112.50	7255.00	-373.15	7246.68	0.00	1411458.01	3218557.89	40.460197	-104.714553	
13200.00	90.16	90.17	7112.23	7354.96	-373.45	7346.68	0.00	1411458.57	3218657.89	40.460196	-104.714194	
13300.00	90.16	90.17	7111.96	7454.91	-373.74	7446.68	0.00	1411459.14	3218757.88	40.460195	-104.713835	
13400.00	90.16	90.17	7111.68	7554.87	-374.03	7546.68	0.00	1411459.70	3218857.88	40.460194	-104.713475	
13500.00	90.16	90.17	7111.41	7654.82	-374.33	7646.68	0.00	1411460.26	3218957.87	40.460193	-104.713116	
13600.00	90.16	90.17	7111.14	7754.78	-374.62	7746.68	0.00	1411460.83	3219057.87	40.460192	-104.712757	
13700.00	90.16	90.17	7110.87	7854.73	-374.91	7846.68	0.00	1411461.39	3219157.86	40.460191	-104.712397	
13800.00	90.16	90.17	7110.59	7954.69	-375.20	7946.68	0.00	1411461.95	3219257.86	40.460191	-104.712038	

Comments	MD (ft)	Incl (°)	Azim True (°)	TVD (ft)	VSEC (ft)	NS (ft)	EW (ft)	DLS (°/100ft)	Northing (ftUS)	Easting (ftUS)	Latitude (°)	Longitude (°)
----------	------------	-------------	------------------	-------------	--------------	------------	------------	------------------	--------------------	-------------------	-----------------	------------------

Survey Type: Def Plan

Survey Error Model: ISCWSA Rev 0 *** 3-D 95.000% Confidence 2.7955 sigma
Survey Program:

Description	Part	MD From (ft)	MD To (ft)	EOU Freq (ft)	Hole Size	Casing Diameter (in)	Expected Max Inclination (deg)	Survey Tool Type	Borehole / Survey
	1	0.000	4.000	1/100.000	13.500	9.625		NAL_MWD_IFR1-Depth Only	Original Hole / Seeley 108-13C-30-L R0 mdv 01Aug19
	1	4.000	1800.000	1/100.000	13.500	9.625		NAL_MWD_IFR1	Original Hole / Seeley 108-13C-30-L R0 mdv 01Aug19
	1	1800.000	17691.127	1/100.000	8.500	5.500		NAL_MWD_IFR1+MS	Original Hole / Seeley 108-13C-30-L R0 mdv 01Aug19