



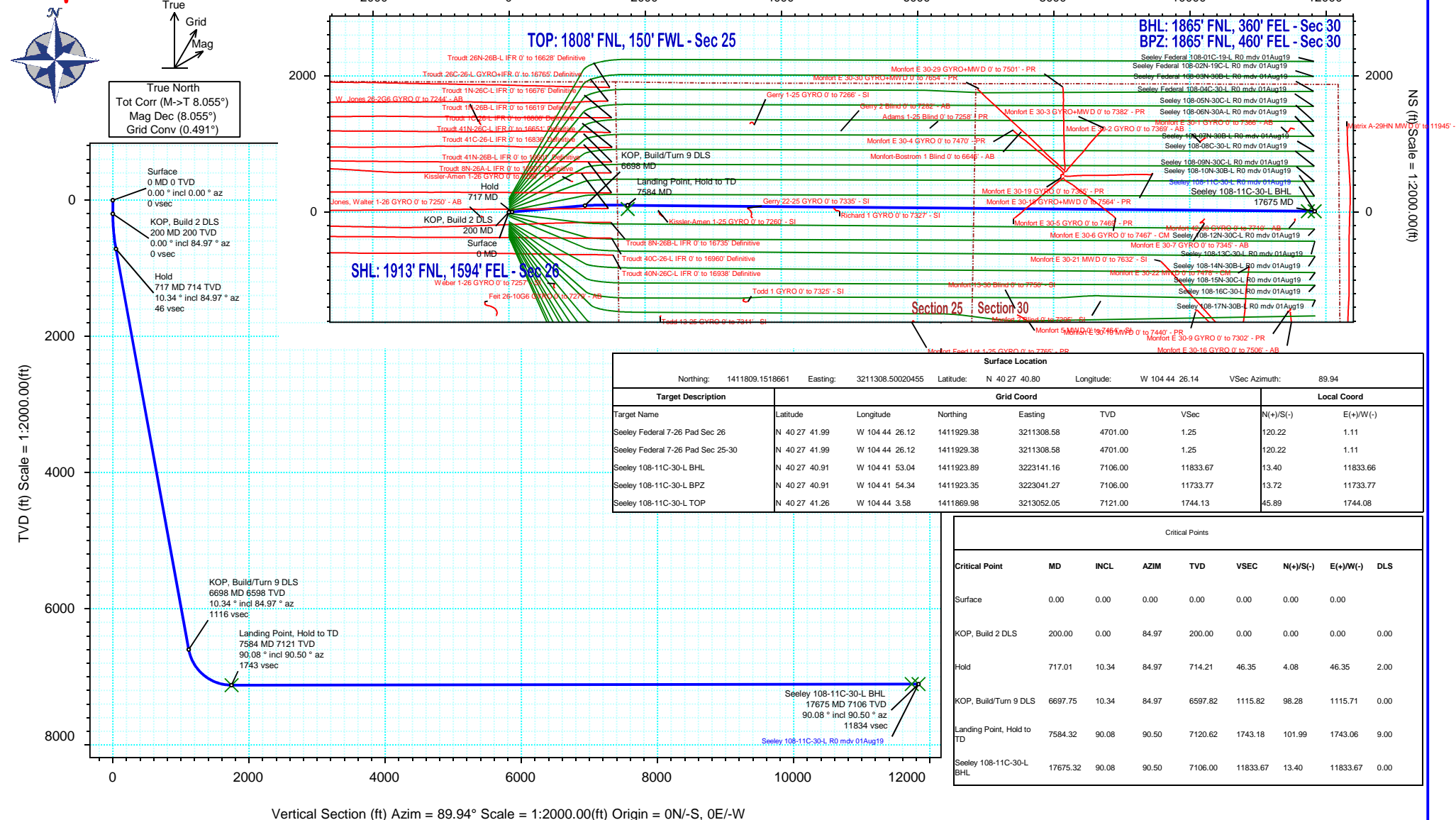
SRC Energy

Rev 0

Schlumberger

Borehole: Original Hole		Well: Seeley 108-11C-30-L	Field: CO, Weld County (NAD 83 NZ) - SRC	Structure: SRC Energy 26-06N-66W (Chalk-Seeley Federal 7-26 Pad DSU 108)
Gravity & Magnetic Parameters Model: HDGM 2019 Dip: 66.847° Date: 31-Jul-2019 MagDec: 8.055° FS: 52216.317nT Gravity FS: 999.049mgn (9.80665 Based)		Surface Location NAD83 Colorado State Plane, Northern Zone, US Feet Lat: N 40 27 40.80 Northing: 1411809.15ftUS Grid Conv: 0.4907° Lon: W 104 44 26.14 Easting: 3211308.5ftUS Scale Fact: 0.99996358		Miscellaneous Slot: Seeley 108-11C-30-L TVD Ref: KB 4ft(4701ft above MSL) Plan: Seeley 108-11C-30-L R0 mdv 01Aug19

Proposal





Seeley 108-11C-30-L R0 mdv 01Aug19 Proposal Geodetic Report

(Def Plan)

Report Date: August 27, 2019 - 09:23 AM
Client: SRC Energy
Field: CO, Weld County (NAD 83 NZ) - SRC
Structure / Slot: SRC Energy 26-06N-66W (Chalk-Seeley Federal 7-26 Pad DSU 108) / Seeley 108-11C-30-L
Well: Seeley 108-11C-30-L
Borehole: Original Hole
UWI / API#: Unknown / 05-123-48901
Survey Name: Seeley 108-11C-30-L R0 mdv 01Aug19
Survey Date: July 18, 2019
Tort / AHD / DDI / ERD Ratio: 90.132 ° / 11838.458 ft / 6.423 / 1.663
Coordinate Reference System: NAD83 Colorado State Plane, Northern Zone, US Feet
Location Lat / Long: N 40° 27' 40.80240", W 104° 44' 26.13840"
Location Grid N/E Y/X: N 1411809.152 ftUS, E 3211308.500 ftUS
CRS Grid Convergence Angle: 0.4907 °
Grid Scale Factor: 0.99996358
Version / Patch: 2.10.760.0

Survey / DLS Computation: Minimum Curvature / Lubinski
Vertical Section Azimuth: 89.935 ° (True North)
Vertical Section Origin: 0.000 ft, 0.000 ft
TVD Reference Datum: KB 4ft
TVD Reference Elevation: 4701.000 ft above MSL
Seabed / Ground Elevation: 4697.000 ft above MSL
Magnetic Declination: 8.055 °
Total Gravity Field Strength: 999.0491mgn (9.80665 Based)
Gravity Model: GARM
Total Magnetic Field Strength: 52216.317 nT
Magnetic Dip Angle: 66.847 °
Declination Date: July 31, 2019
Magnetic Declination Model: HDGM 2019
North Reference: True North
Grid Convergence Used: 0.0000 °
Total Corr Mag North->True North: 8.0553 °
Local Coord Referenced To: Well Head

Comments	MD (ft)	Incl (°)	Azim True (°)	TVD (ft)	VSEC (ft)	NS (ft)	EW (ft)	DLS (°/100ft)	Northing (ftUS)	Easting (ftUS)	Latitude (°)	Longitude (°)
Surface	0.00	0.00	0.00	0.00	0.00	0.00	0.00	N/A	1411809.15	3211308.50	40.461334	-104.740594
	100.00	0.00	84.97	100.00	0.00	0.00	0.00	0.00	1411809.15	3211308.50	40.461334	-104.740594
KOP, Build 2	200.00	0.00	84.97	200.00	0.00	0.00	0.00	0.00	1411809.15	3211308.50	40.461334	-104.740594
DLS	300.00	2.00	84.97	299.98	1.74	0.15	1.74	2.00	1411809.32	3211310.24	40.461334	-104.740588
	400.00	4.00	84.97	399.84	6.95	0.61	6.95	2.00	1411809.82	3211315.45	40.461336	-104.740569
	500.00	6.00	84.97	499.45	15.63	1.38	15.63	2.00	1411810.66	3211324.12	40.461338	-104.740538
	600.00	8.00	84.97	598.70	27.78	2.45	27.77	2.00	1411811.84	3211336.25	40.461341	-104.740494
	700.00	10.00	84.97	697.47	43.36	3.82	43.35	2.00	1411813.34	3211351.82	40.461344	-104.740438
Hold	717.01	10.34	84.97	714.21	46.35	4.08	46.35	2.00	1411813.63	3211354.81	40.461345	-104.740427
	800.00	10.34	84.97	795.85	61.19	5.39	61.19	0.00	1411815.07	3211369.63	40.461349	-104.740374
	900.00	10.34	84.97	894.23	79.07	6.96	79.07	0.00	1411816.79	3211387.50	40.461353	-104.740310
	1000.00	10.34	84.97	992.60	96.96	8.54	96.95	0.00	1411818.52	3211405.37	40.461357	-104.740246
	1100.00	10.34	84.97	1090.98	114.84	10.11	114.83	0.00	1411820.25	3211423.23	40.461362	-104.740181
	1200.00	10.34	84.97	1189.35	132.72	11.69	132.71	0.00	1411821.98	3211441.10	40.461366	-104.740117
	1300.00	10.34	84.97	1287.73	150.60	13.26	150.59	0.00	1411823.71	3211458.96	40.461370	-104.740053
	1400.00	10.34	84.97	1386.11	168.48	14.84	168.47	0.00	1411825.43	3211476.83	40.461375	-104.739989
	1500.00	10.34	84.97	1484.48	186.36	16.41	186.35	0.00	1411827.16	3211494.69	40.461379	-104.739924
	1600.00	10.34	84.97	1582.86	204.25	17.99	204.23	0.00	1411828.89	3211512.56	40.461383	-104.739860
	1700.00	10.34	84.97	1681.23	222.13	19.56	222.11	0.00	1411830.62	3211530.42	40.461388	-104.739796
	1800.00	10.34	84.97	1779.61	240.01	21.14	239.99	0.00	1411832.35	3211548.29	40.461392	-104.739732
	1900.00	10.34	84.97	1877.99	257.89	22.71	257.87	0.00	1411834.07	3211566.15	40.461396	-104.739667
	2000.00	10.34	84.97	1976.36	275.77	24.29	275.75	0.00	1411835.80	3211584.02	40.461401	-104.739603
	2100.00	10.34	84.97	2074.74	293.66	25.86	293.63	0.00	1411837.53	3211601.88	40.461405	-104.739539
	2200.00	10.34	84.97	2173.11	311.54	27.44	311.51	0.00	1411839.26	3211619.75	40.461409	-104.739475
	2300.00	10.34	84.97	2271.49	329.42	29.01	329.39	0.00	1411840.99	3211637.61	40.461414	-104.739410
	2400.00	10.34	84.97	2369.87	347.30	30.59	347.27	0.00	1411842.71	3211655.48	40.461418	-104.739346
	2500.00	10.34	84.97	2468.24	365.18	32.17	365.15	0.00	1411844.44	3211673.34	40.461422	-104.739282
	2600.00	10.34	84.97	2566.62	383.06	33.74	383.03	0.00	1411846.17	3211691.21	40.461427	-104.739218
	2700.00	10.34	84.97	2664.99	400.95	35.32	400.91	0.00	1411847.90	3211709.07	40.461431	-104.739153
	2800.00	10.34	84.97	2763.37	418.83	36.89	418.79	0.00	1411849.63	3211726.94	40.461435	-104.739089
	2900.00	10.34	84.97	2861.74	436.71	38.47	436.67	0.00	1411851.35	3211744.81	40.461440	-104.739025
	3000.00	10.34	84.97	2960.12	454.59	40.04	454.55	0.00	1411853.08	3211762.67	40.461444	-104.738961
	3100.00	10.34	84.97	3058.50	472.47	41.62	472.43	0.00	1411854.81	3211780.54	40.461448	-104.738896
	3200.00	10.34	84.97	3156.87	490.36	43.19	490.31	0.00	1411856.54	3211798.40	40.461453	-104.738832
	3300.00	10.34	84.97	3255.25	508.24	44.77	508.19	0.00	1411858.27	3211816.27	40.461457	-104.738768
	3400.00	10.34	84.97	3353.62	526.12	46.34	526.07	0.00	1411859.99	3211834.13	40.461461	-104.738703
	3500.00	10.34	84.97	3452.00	544.00	47.92	543.95	0.00	1411861.72	3211852.00	40.461466	-104.738639
	3600.00	10.34	84.97	3550.38	561.88	49.49	561.83	0.00	1411863.45	3211869.86	40.461470	-104.738575
	3700.00	10.34	84.97	3648.75	579.77	51.07	579.71	0.00	1411865.18	3211887.73	40.461474	-104.738511
	3800.00	10.34	84.97	3747.13	597.65	52.64	597.59	0.00	1411866.91	3211905.59	40.461478	-104.738446
	3900.00	10.34	84.97	3845.50	615.53	54.22	615.47	0.00	1411868.63	3211923.46	40.461483	-104.738382
	4000.00	10.34	84.97	3943.88	633.41	55.79	633.35	0.00	1411870.36	3211941.32	40.461487	-104.738318
	4100.00	10.34	84.97	4042.26	651.29	57.37	651.23	0.00	1411872.09	3211959.19	40.461491	-104.738254
	4200.00	10.34	84.97	4140.63	669.17	58.94	669.11	0.00	1411873.82	3211977.05	40.461496	-104.738189
	4300.00	10.34	84.97	4239.01	687.06	60.52	686.99	0.00	1411875.55	3211994.92	40.461500	-104.738125
	4400.00	10.34	84.97	4337.38	704.94	62.09	704.87	0.00	1411877.27	3212012.78	40.461504	-104.738061
	4500.00	10.34	84.97	4435.76	722.82	63.67	722.75	0.00	1411879.00	3212030.65	40.461509	-104.737997
	4600.00	10.34	84.97	4534.14	740.70	65.24	740.63	0.00	1411880.73	3212048.51	40.461513	-104.737932
	4700.00	10.34	84.97	4632.51	758.58	66.82	758.51	0.00	1411882.46	3212066.38	40.461517	-104.737868
	4800.00	10.34	84.97	4730.89	776.47	68.39	776.39	0.00	1411884.19	3212084.24	40.461522	-104.737804
	4900.00	10.34	84.97	4829.26	794.35	69.97	794.27	0.00	1411885.91	3212102.11	40.461526	-104.737740
	5000.00	10.34	84.97	4927.64	812.23	71.54	812.15	0.00	1411887.64	3212119.98	40.461530	-104.737675
	5100.00	10.34	84.97	5026.01	830.11	73.12	830.03	0.00	1411889.37	3212137.84	40.461535	-104.737611
	5200.00	10.34	84.97	5124.39	847.99	74.69	847.91	0.00	1411891.10	3212155.71	40.461539	-104.737547
	5300.00	10.34	84.97	5222.77	865.87	76.27	865.79	0.00	1411892.83	3212173.57	40.461543	-104.737483
	5400.00	10.34	84.97	5321.14	883.76	77.84	883.67	0.00	1411894.55	3212191.44	40.461548	-104.737418
	5500.00	10.34	84.97	5419.52	901.64	79.42	901.55	0.00	1411896.28	3212209.30	40.461552	-104.737354
	5600.00	10.34	84.97	5517.89	919.52	80.99	919.43	0.00	1411898.01	3212227.17	40.461556	-104.737290
	5700.00	10.34	84.97	5616.27	937.40	82.57	937.31	0.00	1411899.74	3212245.03	40.461561	-104.737226
	5800.00	10.34	84.97	5714.65	955.28	84.14	955.19	0.00	1411901.47	3212262.90	40.461565	-104.737161
	5900.00	10.34	84.97	5813.02	973.17	85.72	973.07	0.00	1411903.19	3212280.76	40.461569	-104.737097
	6000.00	10.34	84.97	5911.40	991.05	87.29	990.95	0.00	1411904.92	3212298.63	40.461574	-104.737033
	6100.00	10.34	84.97	6009.77	1008.93	88.87	1008.83	0.00	1411906.65	3212316.49	40.461578	-104.736969
	6200.00	10.34	84.97	6108.15	1026.81	90.44	1026.71	0.00	1411908.38	3212334.36	40.461582	-104.736904
	6300.00	10.34	84.97	6206.53	1044.69	92.02	1044.59	0.00	1411910.11	3212352.22	40.461587	-104.736840
	6400.00	10.34	84.97	6304.90	1062.58	93.59	1062.47	0.00	1411911.83	3212370.09	40.461591	-104.736776
	6500.00	10.34	84.97	6403.28	1080.46	95.17	1080.35	0.00	1411913.56	3212387.95	40.461595	-104.736712
	6600.00	10.34	84.97	6501.65	1098.34	96.74	1098.23	0.00	1411915.29	3212405.82	40.461599	-104.736647
KOP, Build/Turn 9 DLS	6697.75	10.34	84.97	6597.82	1115.82	98.28	1115.71	0.00	1411916.98	3212423.28	40.461604	-104.736585
	6700.00	10.54	85.07	6600.03	1116.22	98.32	1116.11	9.00	1411917.02	3212423.69	40.461604	-104.736583
	6800.00	19.52	87.66	6696.51	1142.09	99.79	1141.97	9.00	1411918.71	3212449.53	40.461608	-104.736490
	6900.00	28.51	88.64	6787.76	1182.72	101.04	1182.61	9.00	1411920.31	3212490.15	40.461611	-104.736344
	7000.00	37.51	89.19	6871.53	1237.13	102.04	1237.02	9.00	1411921.77	3212544.55	40.461614	-104.736149
	7100.00	46.50	89.54	6945.77	1303.98	102.76	1303.86	9.00	1411923.07	3212611.39	40.461616	-104.735908
	7200.00	55.50	89.81</									

Comments	MD (ft)	Incl (°)	Azim True (°)	TVD (ft)	VSEC (ft)	NS (ft)	EW (ft)	DLS (°/100ft)	Northing (ftUS)	Easting (ftUS)	Latitude (°)	Longitude (°)
Landing Point, Hold to TD	7300.00	64.50	90.02	7058.58	1468.13	103.31	1468.01	9.00	1411925.02	3212775.52	40.461617	-104.735318
	7400.00	73.50	90.20	7094.39	1561.39	103.12	1561.27	9.00	1411925.63	3212868.77	40.461617	-104.734983
	7500.00	82.50	90.37	7115.16	1659.10	102.63	1658.98	9.00	1411925.98	3212966.48	40.461616	-104.734632
	7584.32	90.08	90.50	7120.62	1743.18	101.99	1743.06	9.00	1411926.06	3213050.56	40.461614	-104.734330
	7600.00	90.08	90.50	7120.60	1758.86	101.85	1758.74	0.00	1411926.06	3213066.24	40.461613	-104.734274
	7700.00	90.08	90.50	7120.45	1858.85	100.98	1858.74	0.00	1411926.04	3213166.23	40.461611	-104.733914
	7800.00	90.08	90.50	7120.31	1958.85	100.10	1958.73	0.00	1411926.02	3213266.23	40.461609	-104.733555
	7900.00	90.08	90.50	7120.16	2058.84	99.22	2058.73	0.00	1411925.99	3213366.23	40.461606	-104.733196
	8000.00	90.08	90.50	7120.02	2158.84	98.34	2158.73	0.00	1411925.97	3213466.22	40.461604	-104.732836
	8100.00	90.08	90.50	7119.87	2258.83	97.46	2258.72	0.00	1411925.95	3213566.22	40.461601	-104.732477
	8200.00	90.08	90.50	7119.73	2358.83	96.59	2358.72	0.00	1411925.93	3213666.21	40.461599	-104.732118
	8300.00	90.08	90.50	7119.58	2458.82	95.71	2458.71	0.00	1411925.91	3213766.21	40.461596	-104.731758
	8400.00	90.08	90.50	7119.44	2558.82	94.83	2558.71	0.00	1411925.89	3213866.21	40.461594	-104.731399
	8500.00	90.08	90.50	7119.29	2658.81	93.95	2658.71	0.00	1411925.86	3213966.20	40.461591	-104.731040
	8600.00	90.08	90.50	7119.15	2758.81	93.07	2758.70	0.00	1411925.84	3214066.20	40.461589	-104.730680
	8700.00	90.08	90.50	7119.00	2858.80	92.20	2858.70	0.00	1411925.82	3214166.19	40.461587	-104.730321
	8800.00	90.08	90.50	7118.86	2958.80	91.32	2958.69	0.00	1411925.80	3214266.19	40.461584	-104.729961
	8900.00	90.08	90.50	7118.71	3058.79	90.44	3058.69	0.00	1411925.78	3214366.19	40.461582	-104.729602
	9000.00	90.08	90.50	7118.57	3158.79	89.56	3158.69	0.00	1411925.76	3214466.18	40.461579	-104.729243
	9100.00	90.08	90.50	7118.42	3258.78	88.68	3258.68	0.00	1411925.74	3214566.18	40.461577	-104.728883
	9200.00	90.08	90.50	7118.28	3358.78	87.81	3358.68	0.00	1411925.71	3214666.17	40.461574	-104.728524
	9300.00	90.08	90.50	7118.13	3458.77	86.93	3458.67	0.00	1411925.69	3214766.17	40.461572	-104.728165
	9400.00	90.08	90.50	7117.99	3558.77	86.05	3558.67	0.00	1411925.67	3214866.17	40.461569	-104.727805
	9500.00	90.08	90.50	7117.84	3658.76	85.17	3658.67	0.00	1411925.65	3214966.16	40.461567	-104.727446
	9600.00	90.08	90.50	7117.70	3758.76	84.30	3758.66	0.00	1411925.63	3215066.16	40.461565	-104.727087
	9700.00	90.08	90.50	7117.55	3858.75	83.42	3858.66	0.00	1411925.61	3215166.15	40.461562	-104.726727
	9800.00	90.08	90.50	7117.41	3958.75	82.54	3958.65	0.00	1411925.59	3215266.15	40.461560	-104.726368
	9900.00	90.08	90.50	7117.26	4058.74	81.66	4058.65	0.00	1411925.56	3215366.15	40.461557	-104.726009
10000.00	90.08	90.50	7117.12	4158.74	4158.74	80.78	4158.65	0.00	1411925.54	3215466.14	40.461555	-104.725649
10100.00	90.08	90.50	7116.97	4258.73	4258.73	79.91	4258.64	0.00	1411925.52	3215566.14	40.461552	-104.725290
10200.00	90.08	90.50	7116.83	4358.73	4358.73	79.03	4358.64	0.00	1411925.50	3215666.13	40.461550	-104.724931
10300.00	90.08	90.50	7116.68	4458.72	4458.72	78.15	4458.63	0.00	1411925.48	3215766.13	40.461547	-104.724571
10400.00	90.08	90.50	7116.54	4558.72	4558.72	77.27	4558.63	0.00	1411925.46	3215866.13	40.461545	-104.724212
10500.00	90.08	90.50	7116.39	4658.71	4658.71	76.39	4658.63	0.00	1411925.43	3215966.12	40.461542	-104.723853
10600.00	90.08	90.50	7116.25	4758.71	4758.71	75.52	4758.62	0.00	1411925.41	3216066.12	40.461540	-104.723493
10700.00	90.08	90.50	7116.10	4858.70	4858.70	74.64	4858.62	0.00	1411925.39	3216166.12	40.461538	-104.723134
10800.00	90.08	90.50	7115.96	4958.70	4958.70	73.76	4958.61	0.00	1411925.37	3216266.11	40.461535	-104.722774
10900.00	90.08	90.50	7115.81	5058.69	5058.69	72.88	5058.61	0.00	1411925.35	3216366.11	40.461533	-104.722415
11000.00	90.08	90.50	7115.67	5158.69	5158.69	72.00	5158.61	0.00	1411925.33	3216466.10	40.461530	-104.722056
11100.00	90.08	90.50	7115.53	5258.68	5258.68	71.13	5258.60	0.00	1411925.31	3216566.10	40.461528	-104.721696
11200.00	90.08	90.50	7115.38	5358.68	5358.68	70.25	5358.60	0.00	1411925.28	3216666.10	40.461525	-104.721337
11300.00	90.08	90.50	7115.24	5458.67	5458.67	69.37	5458.60	0.00	1411925.26	3216766.09	40.461523	-104.720978
11400.00	90.08	90.50	7115.09	5558.67	5558.67	68.49	5558.59	0.00	1411925.24	3216866.09	40.461520	-104.720618
11500.00	90.08	90.50	7114.95	5658.66	5658.66	67.62	5658.59	0.00	1411925.22	3216966.08	40.461518	-104.720259
11600.00	90.08	90.50	7114.80	5758.66	5758.66	66.74	5758.58	0.00	1411925.20	3217066.08	40.461515	-104.719900
11700.00	90.08	90.50	7114.66	5858.65	5858.65	65.86	5858.58	0.00	1411925.18	3217166.08	40.461513	-104.719540
11800.00	90.08	90.50	7114.51	5958.65	5958.65	64.98	5958.58	0.00	1411925.16	3217266.07	40.461510	-104.719181
11900.00	90.08	90.50	7114.37	6058.64	6058.64	64.10	6058.57	0.00	1411925.13	3217366.07	40.461508	-104.718822
12000.00	90.08	90.50	7114.22	6158.64	6158.64	63.23	6158.57	0.00	1411925.11	3217466.06	40.461505	-104.718462
12100.00	90.08	90.50	7114.08	6258.63	6258.63	62.35	6258.56	0.00	1411925.09	3217566.06	40.461503	-104.718103
12200.00	90.08	90.50	7113.93	6358.63	6358.63	61.47	6358.56	0.00	1411925.07	3217666.06	40.461500	-104.717744
12300.00	90.08	90.50	7113.79	6458.62	6458.62	60.59	6458.56	0.00	1411925.05	3217766.05	40.461498	-104.717384
12400.00	90.08	90.50	7113.64	6558.62	6558.62	59.71	6558.55	0.00	1411925.03	3217866.05	40.461496	-104.717025
12500.00	90.08	90.50	7113.50	6658.61	6658.61	58.84	6658.55	0.00	1411925.00	3217966.04	40.461493	-104.716665
12600.00	90.08	90.50	7113.35	6758.61	6758.61	57.96	6758.54	0.00	1411924.98	3218066.04	40.461491	-104.716306
12700.00	90.08	90.50	7113.21	6858.60	6858.60	57.08	6858.54	0.00	1411924.96	3218166.04	40.461488	-104.715947
12800.00	90.08	90.50	7113.06	6958.59	6958.59	56.20	6958.54	0.00	1411924.94	3218266.03	40.461486	-104.715587
12900.00	90.08	90.50	7112.92	7058.59	7058.59	55.33	7058.53	0.00	1411924.92	3218366.03	40.461483	-104.715228
13000.00	90.08	90.50	7112.77	7158.58	7158.58	54.45	7158.53	0.00	1411924.90	3218466.02	40.461481	-104.714869
13100.00	90.08	90.50	7112.63	7258.58	7258.58	53.57	7258.52	0.00	1411924.88	3218566.02	40.461478	-104.714509
13200.00	90.08	90.50	7112.48	7358.57	7358.57	52.69	7358.52	0.00	1411924.85	3218666.02	40.461476	-104.714150
13300.00	90.08	90.50	7112.34	7458.57	7458.57	51.81	7458.52	0.00	1411924.83	3218766.01	40.461473	-104.713791
13400.00	90.08	90.50	7112.19	7558.56	7558.56	50.94	7558.51	0.00	1411924.81	3218866.01	40.461471	-104.713431
13500.00	90.08	90.50	7112.05	7658.56	7658.56	50.06	7658.51	0.00	1411924.79	3218966.00	40.461468	-104.713072
13600.00	90.08	90.50	7111.90	7758.55	7758.55	49.18	7758.50	0.00	1411924.77	3219066.00	40.461466	-104.712713
13700.00	90.08	90.50	7111.76	7858.55	7858.55	48.30	7858.50	0.00	1411924.75	3219166.00	40.461463	-104.712353
13800.00	90.08	90.50	7111.61	7958.54	7958.54	47.42	7958.50	0.00	1411924.72	3219266.99	40.461461	-104.711994
13900.00	90.08	90.50	7111.47	8058.54	8058.54	46.55	8058.49	0.00	1411924.70	3219366.99	40.461458	-104.711635
14000.00	90.08	90.50	7111.32	8158.53	8158.53	45.67	8158.49	0.00	1411924.68	3219466.98	40.461456	-104.711275
14100.00	90.08	90.50	7111.18	8258.53	8258.53	44.79	8258.48	0.00	1411924.66	3219566.98	40.461453	-104.710916
14200.00	90.08	90.50	7111.03	8358.52	8358.52	43.91	8358.48	0.00	1411924.64	3219666.98	40.461451	-104.710557
14300.00	90.08	90.50	7110.89	8458.52	8458.52	43.03	8458.48	0.00	1411924.62	3219766.97	40.461448	-104.710197
14400.00	90.08	90.50	7110.74	8558.51	8558.51	42.16	8558.47	0.00	1411924.60	3219866.97	40.461446	-104.709838
14500.00	90.08	90.50	7110.60	8658.51	8658.51	41.28	8658.47	0.00	1411924.57	3219966.97	40.461443	-104.709478
14600.00	90.08	90.50	7110.45	8758.50	8758.50	40.40	8758.46	0.00	1411924.55	3		

Comments	MD (ft)	Incl (°)	Azim True (°)	TVD (ft)	VSEC (ft)	NS (ft)	EW (ft)	DLS (°/100ft)	Northing (ftUS)	Easting (ftUS)	Latitude (°)	Longitude (°)
----------	------------	-------------	------------------	-------------	--------------	------------	------------	------------------	--------------------	-------------------	-----------------	------------------

Survey Type: Def Plan

Survey Error Model: ISCWSA Rev 0 *** 3-D 95.000% Confidence 2.7955 sigma
Survey Program:

Description	Part	MD From (ft)	MD To (ft)	EOU Freq (ft)	Hole Size	Casing Diameter (in)	Expected Max Inclination (deg)	Survey Tool Type	Borehole / Survey
	1	0.000	4.000	1/100.000	13.500	9.625		NAL_MWD_IFR1-Depth Only	Original Hole / Seeley 108-11C-30-L R0 mdv 01Aug19
	1	4.000	1800.000	1/100.000	13.500	9.625		NAL_MWD_IFR1	Original Hole / Seeley 108-11C-30-L R0 mdv 01Aug19
	1	1800.000	17675.322	1/100.000	8.500	5.500		NAL_MWD_IFR1+MS	Original Hole / Seeley 108-11C-30-L R0 mdv 01Aug19