



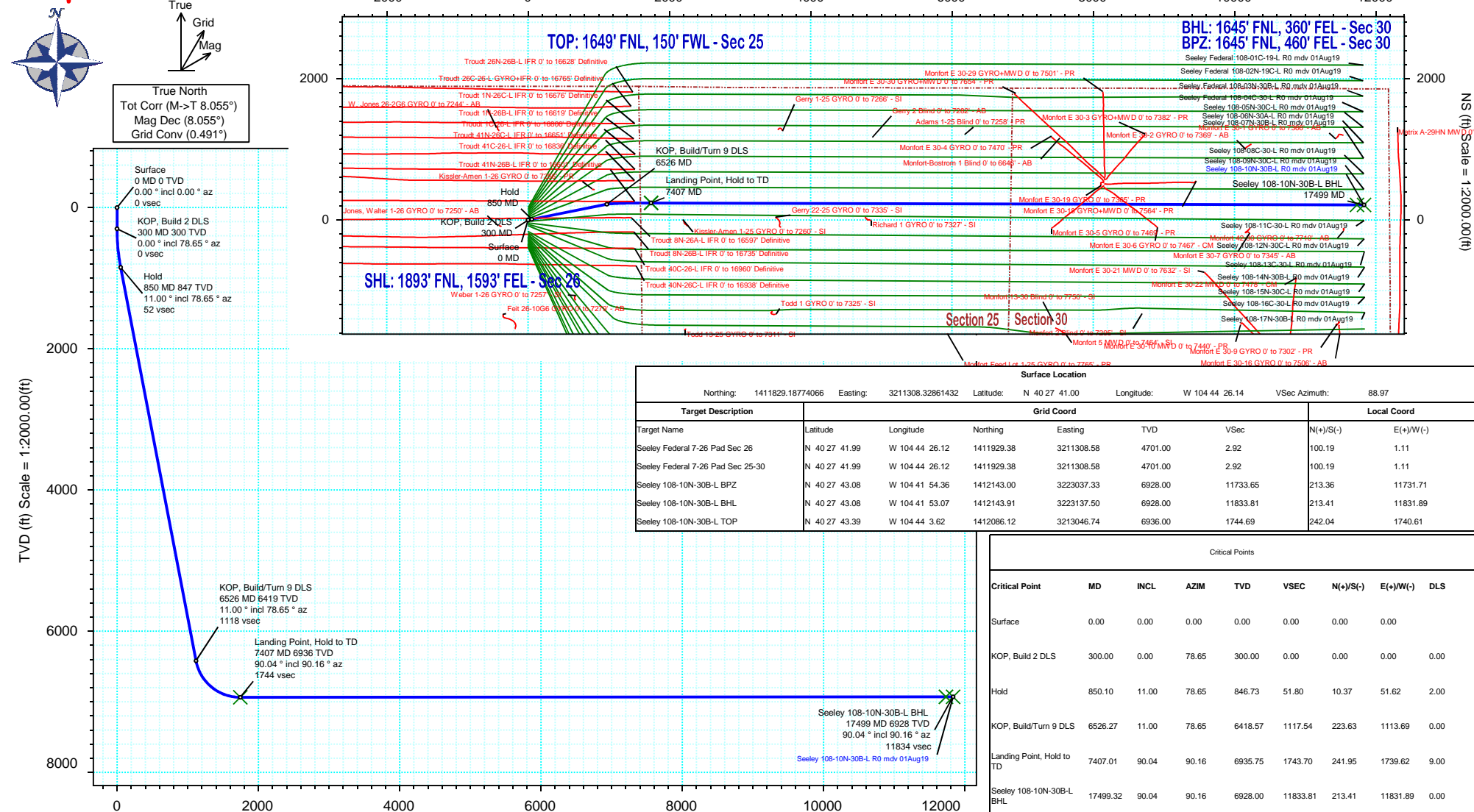
SRC Energy

Rev 0

Schlumberger

Borehole: Original Hole		Well: Seeley 108-10N-30B-L	Field: CO, Weld County (NAD 83 NZ) - SRC	Structure: SRC Energy 26-06N-66W (Chalk-Seeley Federal 7-26 Pad DSU 108)
Gravity & Magnetic Parameters Model: HDGM 2019 Dip: 66.847° Date: 31-Jul-2019 MagDec: 8.055° FS: 52216.328nT Gravity FS: 999.049mgn (9.80665 Based)		Surface Location NAD83 Colorado State Plane, Northern Zone, US Feet Lat: N 40 27 41.00 Northing: 1411829.19ftUS Grid Conv: 0.4907° Lon: W 104 44 26.14 Easting: 3211308.33ftUS Scale Fact: 0.99996359		Miscellaneous Slot: Seeley 108-10N-30B-L TVD Ref: KB 4ft(4701ft above MSL) Plan: Seeley 108-10N-30B-L R0 mdv 01Aug19

Proposal



Vertical Section (ft) Azim = 88.97° Scale = 1:2000.00(ft) Origin = 0N/-S, 0E/-W



Seeley 108-10N-30B-L R0 mdv 01Aug19 Proposal Geodetic Report

(Def Plan)

Report Date: August 27, 2019 - 09:18 AM
Client: SRC Energy
Field: CO, Weld County (NAD 83 NZ) - SRC
Structure / Slot: SRC Energy 26-06N-66W (Chalk-Seeley Federal 7-26 Pad DSU 108) / Seeley 108-10N-30B-L
Well: Seeley 108-10N-30B-L
Borehole: Original Hole
UWI / API#: Unknown / 05-123-48891
Survey Name: Seeley 108-10N-30B-L R0 mdv 01Aug19
Survey Date: July 18, 2019
Tort / AHD / DDI / ERD Ratio: 90.268 ° / 11854.764 ft / 6.431 / 1.709
Coordinate Reference System: NAD83 Colorado State Plane, Northern Zone, US Feet
Location Lat / Long: N 40° 27' 41.00040", W 104° 44' 26.13840"
Location Grid N/E Y/X: N 1411829.188 ftUS, E 3211308.329 ftUS
CRS Grid Convergence Angle: 0.4907 °
Grid Scale Factor: 0.99996359
Version / Patch: 2.10.760.0

Survey / DLS Computation: Minimum Curvature / Lubinski
Vertical Section Azimuth: 88.967 ° (True North)
Vertical Section Origin: 0.000 ft, 0.000 ft
TVD Reference Datum: KB 4ft
TVD Reference Elevation: 4701.000 ft above MSL
Seabed / Ground Elevation: 4697.000 ft above MSL
Magnetic Declination: 8.055 °
Total Gravity Field Strength: 999.0491mgn (9.80665 Based)
Gravity Model: GARM
Total Magnetic Field Strength: 52216.328 nT
Magnetic Dip Angle: 66.847 °
Declination Date: July 31, 2019
Magnetic Declination Model: HDGM 2019
North Reference: True North
Grid Convergence Used: 0.0000 °
Total Corr Mag North->True North: 8.0553 °
Local Coord Referenced To: Well Head

Comments	MD (ft)	Incl (°)	Azim True (°)	TVD (ft)	VSEC (ft)	NS (ft)	EW (ft)	DLS (°/100ft)	Northing (ftUS)	Easting (ftUS)	Latitude (°)	Longitude (°)
Surface	0.00	0.00	0.00	0.00	0.00	0.00	0.00	N/A	1411829.19	3211308.33	40.461389	-104.740594
	100.00	0.00	78.65	100.00	0.00	0.00	0.00	0.00	1411829.19	3211308.33	40.461389	-104.740594
	200.00	0.00	78.65	200.00	0.00	0.00	0.00	0.00	1411829.19	3211308.33	40.461389	-104.740594
KOP, Build 2 DLS	300.00	0.00	78.65	300.00	0.00	0.00	0.00	0.00	1411829.19	3211308.33	40.461389	-104.740594
Hold	400.00	2.00	78.65	399.98	1.72	0.34	1.71	2.00	1411829.55	3211310.04	40.461390	-104.740588
	500.00	4.00	78.65	499.84	6.87	1.37	6.84	2.00	1411830.62	3211315.16	40.461393	-104.740569
	600.00	6.00	78.65	599.45	15.44	3.09	15.39	2.00	1411832.41	3211323.69	40.461397	-104.740539
	700.00	8.00	78.65	698.70	27.43	5.49	27.33	2.00	1411834.91	3211335.61	40.461404	-104.740496
	800.00	10.00	78.65	797.47	42.82	8.57	42.67	2.00	1411838.12	3211350.92	40.461413	-104.740441
	850.10	11.00	78.65	846.73	51.80	10.37	51.62	2.00	1411839.99	3211359.86	40.461417	-104.740408
	900.00	11.00	78.65	895.71	61.17	12.24	60.96	0.00	1411841.95	3211369.18	40.461423	-104.740375
	1000.00	11.00	78.65	993.87	79.95	16.00	79.67	0.00	1411845.87	3211387.86	40.461433	-104.740308
	1100.00	11.00	78.65	1092.03	98.72	19.75	98.38	0.00	1411849.78	3211406.53	40.461443	-104.740240
	1200.00	11.00	78.65	1190.19	117.50	23.51	117.09	0.00	1411853.70	3211425.21	40.461454	-104.740173
	1300.00	11.00	78.65	1288.36	136.27	27.27	135.80	0.00	1411857.62	3211443.89	40.461464	-104.740106
	1400.00	11.00	78.65	1386.52	155.05	31.03	154.51	0.00	1411861.53	3211462.57	40.461474	-104.740039
	1500.00	11.00	78.65	1484.68	173.82	34.78	173.23	0.00	1411865.45	3211481.24	40.461484	-104.739971
	1600.00	11.00	78.65	1582.84	192.60	38.54	191.94	0.00	1411869.37	3211499.92	40.461495	-104.739904
	1700.00	11.00	78.65	1681.00	211.38	42.30	210.65	0.00	1411873.29	3211518.60	40.461505	-104.739837
	1800.00	11.00	78.65	1779.17	230.15	46.05	229.36	0.00	1411877.20	3211537.28	40.461515	-104.739770
	1900.00	11.00	78.65	1877.33	248.93	49.81	248.07	0.00	1411881.12	3211555.95	40.461526	-104.739703
	2000.00	11.00	78.65	1975.49	267.70	53.57	266.78	0.00	1411885.04	3211574.63	40.461536	-104.739635
	2100.00	11.00	78.65	2073.65	286.48	57.33	285.49	0.00	1411888.95	3211593.31	40.461546	-104.739568
	2200.00	11.00	78.65	2171.81	305.25	61.08	304.20	0.00	1411892.87	3211611.99	40.461557	-104.739501
	2300.00	11.00	78.65	2269.98	324.03	64.84	322.91	0.00	1411896.79	3211630.66	40.461567	-104.739434
	2400.00	11.00	78.65	2368.14	342.81	68.60	341.62	0.00	1411900.71	3211649.34	40.461577	-104.739366
	2500.00	11.00	78.65	2466.30	361.58	72.35	360.34	0.00	1411904.62	3211668.02	40.461588	-104.739299
	2600.00	11.00	78.65	2564.46	380.36	76.11	379.05	0.00	1411908.54	3211686.69	40.461598	-104.739232
	2700.00	11.00	78.65	2662.62	399.13	79.87	397.76	0.00	1411912.46	3211705.37	40.461608	-104.739165
	2800.00	11.00	78.65	2760.79	417.91	83.63	416.47	0.00	1411916.37	3211724.05	40.461619	-104.739097
	2900.00	11.00	78.65	2858.95	436.68	87.38	435.18	0.00	1411920.29	3211742.73	40.461629	-104.739030
	3000.00	11.00	78.65	2957.11	455.46	91.14	453.89	0.00	1411924.21	3211761.40	40.461639	-104.738963
	3100.00	11.00	78.65	3055.27	474.24	94.90	472.60	0.00	1411928.13	3211780.08	40.461649	-104.738896
	3200.00	11.00	78.65	3153.44	493.01	98.65	491.31	0.00	1411932.04	3211798.76	40.461660	-104.738828
	3300.00	11.00	78.65	3251.60	511.79	102.41	510.02	0.00	1411935.96	3211817.44	40.461670	-104.738761
	3400.00	11.00	78.65	3349.76	530.56	106.17	528.73	0.00	1411939.88	3211836.11	40.461680	-104.738694
	3500.00	11.00	78.65	3447.92	549.34	109.93	547.45	0.00	1411943.79	3211854.79	40.461691	-104.738627
	3600.00	11.00	78.65	3546.08	568.11	113.68	566.16	0.00	1411947.71	3211873.47	40.461701	-104.738559
	3700.00	11.00	78.65	3644.25	586.89	117.44	584.87	0.00	1411951.63	3211892.15	40.461711	-104.738492
	3800.00	11.00	78.65	3742.41	605.67	121.20	603.58	0.00	1411955.54	3211910.82	40.461722	-104.738425
3900.00	11.00	78.65	3840.57	624.44	124.95	622.29	0.00	1411959.46	3211929.50	40.461732	-104.738358	
4000.00	11.00	78.65	3938.73	643.22	128.71	641.00	0.00	1411963.38	3211948.18	40.461742	-104.738290	
4100.00	11.00	78.65	4036.89	661.99	132.47	659.71	0.00	1411967.30	3211966.86	40.461753	-104.738223	
4200.00	11.00	78.65	4135.06	680.77	136.23	678.42	0.00	1411971.21	3211985.53	40.461763	-104.738156	
4300.00	11.00	78.65	4233.22	699.54	139.98	697.13	0.00	1411975.13	3212004.21	40.461773	-104.738089	
4400.00	11.00	78.65	4331.38	718.32	143.74	715.84	0.00	1411979.05	3212022.89	40.461784	-104.738021	
4500.00	11.00	78.65	4429.54	737.10	147.50	734.56	0.00	1411982.96	3212041.57	40.461794	-104.737954	
4600.00	11.00	78.65	4527.70	755.87	151.25	753.27	0.00	1411986.88	3212060.24	40.461804	-104.737887	
4700.00	11.00	78.65	4625.87	774.65	155.01	771.98	0.00	1411990.80	3212078.92	40.461814	-104.737820	
4800.00	11.00	78.65	4724.03	793.42	158.77	790.69	0.00	1411994.72	3212097.60	40.461825	-104.737753	
4900.00	11.00	78.65	4822.19	812.20	162.53	809.40	0.00	1411998.63	3212116.28	40.461835	-104.737685	
5000.00	11.00	78.65	4920.35	830.97	166.28	828.11	0.00	1412002.55	3212134.95	40.461845	-104.737618	
5100.00	11.00	78.65	5018.51	849.75	170.04	846.82	0.00	1412006.47	3212153.63	40.461856	-104.737551	
5200.00	11.00	78.65	5116.68	868.53	173.80	865.53	0.00	1412010.38	3212172.31	40.461866	-104.737484	
5300.00	11.00	78.65	5214.84	887.30	177.55	884.24	0.00	1412014.30	3212190.99	40.461876	-104.737416	
5400.00	11.00	78.65	5313.00	906.08	181.31	902.95	0.00	1412018.22	3212209.66	40.461887	-104.737349	
5500.00	11.00	78.65	5411.16	924.85	185.07	921.67	0.00	1412022.13	3212228.34	40.461897	-104.737282	
5600.00	11.00	78.65	5509.32	943.63	188.83	940.38	0.00	1412026.05	3212247.02	40.461907	-104.737215	
5700.00	11.00	78.65	5607.49	962.40	192.58	959.09	0.00	1412029.97	3212265.69	40.461918	-104.737147	
5800.00	11.00	78.65	5705.65	981.18	196.34	977.80	0.00	1412033.89	3212284.37	40.461928	-104.737080	
5900.00	11.00	78.65	5803.81	999.96	200.10	996.51	0.00	1412037.80	3212303.05	40.461938	-104.737013	
6000.00	11.00	78.65	5901.97	1018.73	203.85	1015.22	0.00	1412041.72	3212321.73	40.461948	-104.736946	
6100.00	11.00	78.65	6000.13	1037.51	207.61	1033.93	0.00	1412045.64	3212340.40	40.461959	-104.736878	
6200.00	11.00	78.65	6098.30	1056.28	211.37	1052.64	0.00	1412049.55	3212359.08	40.461969	-104.736811	
6300.00	11.00	78.65	6196.46	1075.06	215.13	1071.35	0.00	1412053.47	3212377.76	40.461979	-104.736744	
6400.00	11.00	78.65	6294.62	1093.83	218.88	1090.06	0.00	1412057.39	3212396.44	40.461990	-104.736677	
6500.00	11.00	78.65	6392.78	1112.61	222.64	1108.78	0.00	1412061.31	3212415.11	40.462000	-104.736609	
KOP, Build/Turn 9 DLS	6526.27	11.00	78.65	6418.57	1117.54	223.63	1113.69	0.00	1412062.33	3212420.02	40.462003	-104.736592
	6600.00	17.55	83.11	6489.99	1135.54	226.35	1131.64	9.00	1412065.21	3212437.95	40.462010	-104.736527
	6700.00	26.50	85.70	6582.59	1172.89	229.84	1168.94	9.00	1412069.02	3212475.21	40.462020	-104.736393
	6800.00	35.47	87.04	6668.24	1224.27	233.02	1220.27	9.00	1412072.64	3212526.51	40.462029	-104.736209
	6900.00	44.46	87.89	6744.80	1288.42	235.81	1284.37	9.00	1412075.98	3212590.59	40.462036	-104.735978
	7000.00	53.45	88.51	6810.40	1363.75	238.14	1359.67	9.00	1412078.96	3212665.86	40.462043	-104.735708
	7100.00	62.44	89.00	6863.43	1448.41	239.97	1444.32	9.00	1412081.50	3212750.48	40.462048	-104.735404
	7200.00	71.43	89.41	6902.57	1540.32	241.23	1536.22	9.00	1412083.55	3212842.37	40.462051	-104.735073

Comments	MD (ft)	Incl (°)	Azim True (°)	TVD (ft)	VSEC (ft)	NS (ft)	EW (ft)	DLS (°/100ft)	Northing (ftUS)	Easting (ftUS)	Latitude (°)	Longitude (°)
Landing Point, Hold to TD	7300.00	80.42	89.79	6926.87	1637.21	241.90	1633.11	9.00	1412085.05	3212939.25	40.462053	-104.734725
	7400.00	89.41	90.14	6935.72	1736.70	241.96	1732.62	9.00	1412085.97	3213038.74	40.462053	-104.734368
	7407.01	90.04	90.16	6935.75	1743.70	241.95	1739.62	9.00	1412086.01	3213045.75	40.462053	-104.734342
	7500.00	90.04	90.16	6935.68	1836.68	241.68	1832.62	0.00	1412086.55	3213138.74	40.462052	-104.734008
	7600.00	90.04	90.16	6935.60	1936.66	241.40	1932.62	0.00	1412087.12	3213238.73	40.462051	-104.733649
	7700.00	90.04	90.16	6935.53	2036.63	241.12	2032.62	0.00	1412087.69	3213338.73	40.462051	-104.733289
	7800.00	90.04	90.16	6935.45	2136.61	240.84	2132.62	0.00	1412088.27	3213438.72	40.462050	-104.732930
	7900.00	90.04	90.16	6935.37	2236.59	240.55	2232.62	0.00	1412088.84	3213538.72	40.462049	-104.732571
	8000.00	90.04	90.16	6935.29	2336.57	240.27	2332.62	0.00	1412089.41	3213638.71	40.462048	-104.732211
	8100.00	90.04	90.16	6935.22	2436.55	239.99	2432.61	0.00	1412089.99	3213738.71	40.462047	-104.731852
	8200.00	90.04	90.16	6935.14	2536.53	239.70	2532.61	0.00	1412090.56	3213838.70	40.462047	-104.731493
	8300.00	90.04	90.16	6935.06	2636.50	239.42	2632.61	0.00	1412091.14	3213938.69	40.462046	-104.731133
	8400.00	90.04	90.16	6934.99	2736.48	239.14	2732.61	0.00	1412091.71	3214038.68	40.462045	-104.730774
	8500.00	90.04	90.16	6934.91	2836.46	238.86	2832.61	0.00	1412092.28	3214138.68	40.462044	-104.730414
	8600.00	90.04	90.16	6934.83	2936.44	238.57	2932.61	0.00	1412092.86	3214238.68	40.462043	-104.730055
	8700.00	90.04	90.16	6934.76	3036.42	238.29	3032.61	0.00	1412093.43	3214338.67	40.462043	-104.729696
	8800.00	90.04	90.16	6934.68	3136.39	238.01	3132.61	0.00	1412094.00	3214438.67	40.462042	-104.729336
	8900.00	90.04	90.16	6934.60	3236.37	237.72	3232.61	0.00	1412094.58	3214538.66	40.462041	-104.728977
	9000.00	90.04	90.16	6934.53	3336.35	237.44	3332.61	0.00	1412095.15	3214638.66	40.462040	-104.728618
	9100.00	90.04	90.16	6934.45	3436.33	237.16	3432.61	0.00	1412095.72	3214738.65	40.462039	-104.728258
	9200.00	90.04	90.16	6934.37	3536.31	236.88	3532.61	0.00	1412096.30	3214838.65	40.462039	-104.727899
	9300.00	90.04	90.16	6934.30	3636.29	236.59	3632.61	0.00	1412096.87	3214938.64	40.462038	-104.727540
	9400.00	90.04	90.16	6934.22	3736.26	236.31	3732.61	0.00	1412097.45	3215038.63	40.462037	-104.727180
	9500.00	90.04	90.16	6934.14	3836.24	236.03	3832.61	0.00	1412098.02	3215138.63	40.462036	-104.726821
	9600.00	90.04	90.16	6934.07	3936.22	235.75	3932.61	0.00	1412098.59	3215238.62	40.462035	-104.726461
	9700.00	90.04	90.16	6933.99	4036.20	235.46	4032.61	0.00	1412099.17	3215338.62	40.462034	-104.726102
	9800.00	90.04	90.16	6933.91	4136.18	235.18	4132.61	0.00	1412099.74	3215438.61	40.462034	-104.725743
	9900.00	90.04	90.16	6933.84	4236.16	234.90	4232.61	0.00	1412100.31	3215538.61	40.462033	-104.725383
	10000.00	90.04	90.16	6933.76	4336.13	234.61	4332.61	0.00	1412100.89	3215638.60	40.462032	-104.725024
	10100.00	90.04	90.16	6933.68	4436.11	234.33	4432.61	0.00	1412101.46	3215738.60	40.462031	-104.724665
	10200.00	90.04	90.16	6933.61	4536.09	234.05	4532.61	0.00	1412102.03	3215838.59	40.462030	-104.724305
	10300.00	90.04	90.16	6933.53	4636.07	233.77	4632.61	0.00	1412102.61	3215938.58	40.462029	-104.723946
	10400.00	90.04	90.16	6933.45	4736.05	233.48	4732.61	0.00	1412103.18	3216038.58	40.462029	-104.723587
	10500.00	90.04	90.16	6933.38	4836.02	233.20	4832.60	0.00	1412103.76	3216138.57	40.462028	-104.723227
	10600.00	90.04	90.16	6933.30	4936.00	232.92	4932.60	0.00	1412104.33	3216238.57	40.462027	-104.722868
	10700.00	90.04	90.16	6933.22	5035.98	232.64	5032.60	0.00	1412104.90	3216338.56	40.462026	-104.722508
	10800.00	90.04	90.16	6933.14	5135.96	232.35	5132.60	0.00	1412105.48	3216438.56	40.462025	-104.722149
	10900.00	90.04	90.16	6933.07	5235.94	232.07	5232.60	0.00	1412106.05	3216538.55	40.462024	-104.721790
	11000.00	90.04	90.16	6932.99	5335.92	231.79	5332.60	0.00	1412106.62	3216638.55	40.462024	-104.721430
	11100.00	90.04	90.16	6932.91	5435.89	231.50	5432.60	0.00	1412107.20	3216738.54	40.462023	-104.721071
	11200.00	90.04	90.16	6932.84	5535.87	231.22	5532.60	0.00	1412107.77	3216838.53	40.462022	-104.720712
	11300.00	90.04	90.16	6932.76	5635.85	230.94	5632.60	0.00	1412108.34	3216938.53	40.462021	-104.720352
	11400.00	90.04	90.16	6932.68	5735.83	230.66	5732.60	0.00	1412108.92	3217038.52	40.462020	-104.719993
	11500.00	90.04	90.16	6932.61	5835.81	230.37	5832.60	0.00	1412109.49	3217138.52	40.462019	-104.719633
	11600.00	90.04	90.16	6932.53	5935.78	230.09	5932.60	0.00	1412110.07	3217238.51	40.462019	-104.719274
	11700.00	90.04	90.16	6932.45	6035.76	229.81	6032.60	0.00	1412110.64	3217338.51	40.462018	-104.718915
	11800.00	90.04	90.16	6932.38	6135.74	229.53	6132.60	0.00	1412111.21	3217438.50	40.462017	-104.718555
	11900.00	90.04	90.16	6932.30	6235.72	229.24	6232.60	0.00	1412111.79	3217538.50	40.462016	-104.718196
	12000.00	90.04	90.16	6932.22	6335.70	228.96	6332.60	0.00	1412112.36	3217638.49	40.462015	-104.717837
	12100.00	90.04	90.16	6932.15	6435.68	228.68	6432.60	0.00	1412112.93	3217738.49	40.462014	-104.717477
	12200.00	90.04	90.16	6932.07	6535.65	228.39	6532.60	0.00	1412113.51	3217838.48	40.462014	-104.717118
	12300.00	90.04	90.16	6931.99	6635.63	228.11	6632.60	0.00	1412114.08	3217938.47	40.462013	-104.716759
	12400.00	90.04	90.16	6931.92	6735.61	227.83	6732.60	0.00	1412114.65	3218038.47	40.462012	-104.716399
	12500.00	90.04	90.16	6931.84	6835.59	227.55	6832.60	0.00	1412115.23	3218138.46	40.462011	-104.716040
	12600.00	90.04	90.16	6931.76	6935.57	227.26	6932.60	0.00	1412115.80	3218238.46	40.462010	-104.715680
	12700.00	90.04	90.16	6931.69	7035.54	226.98	7032.60	0.00	1412116.38	3218338.45	40.462009	-104.715321
	12800.00	90.04	90.16	6931.61	7135.52	226.70	7132.59	0.00	1412116.95	3218438.45	40.462008	-104.714962
	12900.00	90.04	90.16	6931.53	7235.50	226.42	7232.59	0.00	1412117.52	3218538.44	40.462008	-104.714602
	13000.00	90.04	90.16	6931.46	7335.48	226.13	7332.59	0.00	1412118.10	3218638.44	40.462007	-104.714243
	13100.00	90.04	90.16	6931.38	7435.46	225.85	7432.59	0.00	1412118.67	3218738.43	40.462006	-104.713884
	13200.00	90.04	90.16	6931.30	7535.44	225.57	7532.59	0.00	1412119.24	3218838.42	40.462005	-104.713524
	13300.00	90.04	90.16	6931.22	7635.41	225.28	7632.59	0.00	1412119.82	3218938.42	40.462004	-104.713165
	13400.00	90.04	90.16	6931.15	7735.39	225.00	7732.59	0.00	1412120.39	3219038.41	40.462003	-104.712806
	13500.00	90.04	90.16	6931.07	7835.37	224.72	7832.59	0.00	1412120.96	3219138.41	40.462002	-104.712446
	13600.00	90.04	90.16	6930.99	7935.35	224.44	7932.59	0.00	1412121.54	3219238.40	40.462002	-104.712087
	13700.00	90.04	90.16	6930.92	8035.33	224.15	8032.59	0.00	1412122.11	3219338.40	40.462001	-104.711727
	13800.00	90.04	90.16	6930.84	8135.31	223.87	8132.59	0.00	1412122.68	3219438.39	40.462000	-104.711368
	13900.00	90.04	90.16	6930.76	8235.28	223.59	8232.59	0.00	1412123.26	3219538.39	40.461999	-104.711009
	14000.00	90.04	90.16	6930.69	8335.26	223.31	8332.59	0.00	1412123.83	3219638.38	40.461998	-104.710649
	14100.00	90.04	90.16	6930.61	8435.24	223.02	8432.59	0.00	1412124.41	3219738.37	40.461997	-104.710290
	14200.00	90.04	90.16	6930.53	8535.22	222.74	8532.59	0.00	1412124.98	3219838.37	40.461996	-104.709931
	14300.00	90.04	90.16	6930.46	8635.20	222.46	8632.59	0.00	1412125.55	3219938.36	40.461995	-104.709571
	14400.00	90.04	90.16	6930.38	8735.17	222.17	8732.59	0.00	1412126.13	3220038.36	40.461995	-104.709212
	14500.00	90.04	90.16	6930.30	8835.15	221.89	8832.59	0.00	1412126.70	3220138.35	40.461994	-104.708853
	14600.00	90.04	90.16	6930.23	8935.13	221.61	8932.59	0.00	1412127.27	3220238.35	40.461993	-104.708493
	14700.00	90.04	90.16	6930.15	9035.11	221.33	9032.59	0.00	1412127.85	3220338.34	40.461992	-104.708134
	14800.00	90.04	90.16	6930.07	9135.09	221.04	9132.59	0.00	1412128.42	3220438.34	40.461991	-104.707774
	14900.00	90.04	90.16	6930.00	9235.07	220.76	9232.59	0.00	1412128.99	3220538.33</		

Comments	MD (ft)	Incl (°)	Azim True (°)	TVD (ft)	VSEC (ft)	NS (ft)	EW (ft)	DLS (°/100ft)	Northing (ftUS)	Easting (ftUS)	Latitude (°)	Longitude (°)
Survey Type:	Def Plan											

Survey Error Model: ISCWSA Rev 0 *** 3-D 95.000% Confidence 2.7955 sigma
Survey Program:

Description	Part	MD From (ft)	MD To (ft)	EOU Freq (ft)	Hole Size	Casing Diameter (in)	Expected Max Inclination (deg)	Survey Tool Type	Borehole / Survey
	1	0.000	4.000	1/100.000	13.500	9.625		NAL_MWD_IFR1-Depth Only	Original Hole / Seeley 108-10N-30B-L R0 mdv 01Aug19
	1	4.000	1800.000	1/100.000	13.500	9.625		NAL_MWD_IFR1	Original Hole / Seeley 108-10N-30B-L R0 mdv 01Aug19
	1	1800.000	17499.315	1/100.000	8.500	5.500		NAL_MWD_IFR1+MS	Original Hole / Seeley 108-10N-30B-L R0 mdv 01Aug19