



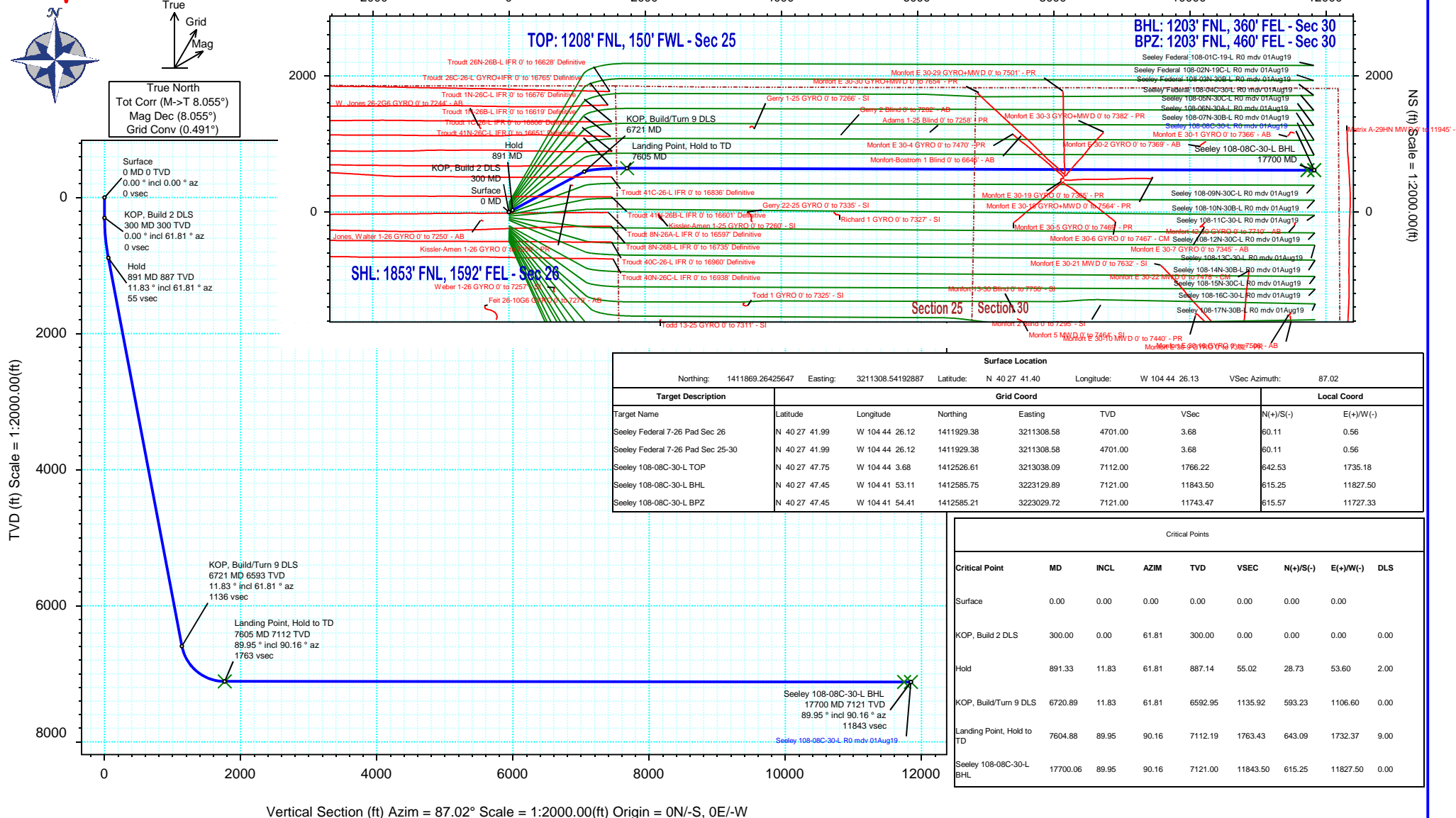
SRC Energy

Rev 0

Schlumberger

Borehole:		Well:	Field:	Structure:
Original Hole		Seeley 108-08C-30-L	CO, Weld County (NAD 83 NZ) - SRC	SRC Energy 26-06N-66W (Chalk-Seeley Federal 7-26 Pad DSU 108)
Gravity & Magnetic Parameters			Surface Location	Miscellaneous
Model:	HDGM 2019	Dip: 66.847°	NAD83 Colorado State Plane, Northern Zone, US Feet	Slot: Seeley 108-08C-30-L
MagDec:	8.055°	FS: 52216.351nT	Lat: N 40 27 41.40	TVD Ref: KB 4ft(4701ft above MSL)
		Gravity FS: 999.049mgm (9.80665 Based)	North: 1411869.26ftUS	Plan: Seeley 108-08C-30-L R0 mdy 01Aug19
			Lon: W 104 44 26.13	
			Easting: 3211308.54ftUS	
			Scale Fact: 0.99996359	

Proposal





Seeley 108-08C-30-L R0 mdv 01Aug19 Proposal Geodetic Report

(Def Plan)

Report Date: August 27, 2019 - 09:07 AM
Client: SRC Energy
Field: CO, Weld County (NAD 83 NZ) - SRC
Structure / Slot: SRC Energy 26-06N-66W (Chalk-Seeley Federal 7-26 Pad DSU 108) / Seeley 108-08C-30-L
Well: Seeley 108-08C-30-L
Borehole: Original Hole
UWI / API#: Unknown / 05-123-48879
Survey Name: Seeley 108-08C-30-L R0 mdv 01Aug19
Survey Date: July 18, 2019
Tort / AHD / DDI / ERD Ratio: 91.386 ° / 11980.698 ft / 6.435 / 1.682
Coordinate Reference System: NAD83 Colorado State Plane, Northern Zone, US Feet
Location Lat / Long: N 40° 27' 41.39640", W 104° 44' 26.13120"
Location Grid N/E Y/X: N 1411869.264 ftUS, E 3211308.542 ftUS
CRS Grid Convergence Angle: 0.4907 °
Grid Scale Factor: 0.99996359
Version / Patch: 2.10.760.0

Survey / DLS Computation: Minimum Curvature / Lubinski
Vertical Section Azimuth: 87.022 ° (True North)
Vertical Section Origin: 0.000 ft, 0.000 ft
TVD Reference Datum: KB 4ft
TVD Reference Elevation: 4701.000 ft above MSL
Seabed / Ground Elevation: 4697.000 ft above MSL
Magnetic Declination: 8.055 °
Total Gravity Field Strength: 999.0491mgn (9.80665 Based)
Gravity Model: GARM
Total Magnetic Field Strength: 52216.351 nT
Magnetic Dip Angle: 66.847 °
Declination Date: July 31, 2019
Magnetic Declination Model: HDGM 2019
North Reference: True North
Grid Convergence Used: 0.0000 °
Total Corr Mag North->True North: 8.0552 °
Local Coord Referenced To: Well Head

Comments	MD (ft)	Incl (°)	Azim True (°)	TVD (ft)	VSEC (ft)	NS (ft)	EW (ft)	DLS (°/100ft)	Northing (ftUS)	Easting (ftUS)	Latitude (°)	Longitude (°)
Surface	0.00	0.00	0.00	0.00	0.00	0.00	0.00	N/A	1411869.26	3211308.54	40.461499	-104.740592
	100.00	0.00	61.81	100.00	0.00	0.00	0.00	0.00	1411869.26	3211308.54	40.461499	-104.740592
	200.00	0.00	61.81	200.00	0.00	0.00	0.00	0.00	1411869.26	3211308.54	40.461499	-104.740592
KOP, Build 2 DLS	300.00	0.00	61.81	300.00	0.00	0.00	0.00	0.00	1411869.26	3211308.54	40.461499	-104.740592
	400.00	2.00	61.81	399.98	1.58	0.82	1.54	2.00	1411870.10	3211310.07	40.461501	-104.740586
	500.00	4.00	61.81	499.84	6.31	3.30	6.15	2.00	1411872.61	3211314.66	40.461508	-104.740570
	600.00	6.00	61.81	599.45	14.20	7.41	13.83	2.00	1411876.80	3211322.31	40.461519	-104.740542
	700.00	8.00	61.81	698.70	25.22	13.17	24.57	2.00	1411882.65	3211333.00	40.461535	-104.740504
	800.00	10.00	61.81	797.47	39.37	20.56	38.36	2.00	1411890.15	3211346.72	40.461555	-104.740454
Hold	891.33	11.83	61.81	887.14	55.02	28.73	53.60	2.00	1411898.45	3211361.89	40.461578	-104.740399
	900.00	11.83	61.81	895.63	56.62	29.57	55.16	0.00	1411899.31	3211363.45	40.461580	-104.740394
	1000.00	11.83	61.81	993.50	75.17	39.26	73.23	0.00	1411909.14	3211381.43	40.461607	-104.740329
	1100.00	11.83	61.81	1091.38	93.71	48.94	91.29	0.00	1411918.98	3211399.41	40.461633	-104.740264
	1200.00	11.83	61.81	1189.26	112.25	58.62	109.35	0.00	1411928.82	3211417.38	40.461660	-104.740199
	1300.00	11.83	61.81	1287.13	130.79	68.31	127.42	0.00	1411938.66	3211435.36	40.461686	-104.740134
	1400.00	11.83	61.81	1385.01	149.33	77.99	145.48	0.00	1411948.49	3211453.34	40.461713	-104.740069
	1500.00	11.83	61.81	1482.89	167.88	87.67	163.54	0.00	1411958.33	3211471.32	40.461740	-104.740004
	1600.00	11.83	61.81	1580.77	186.42	97.35	181.61	0.00	1411968.17	3211489.30	40.461766	-104.739939
	1700.00	11.83	61.81	1678.64	204.96	107.04	199.67	0.00	1411978.00	3211507.28	40.461793	-104.739874
	1800.00	11.83	61.81	1776.52	223.50	116.72	217.73	0.00	1411987.84	3211525.26	40.461819	-104.739810
	1900.00	11.83	61.81	1874.40	242.04	126.40	235.79	0.00	1411997.68	3211543.24	40.461846	-104.739745
	2000.00	11.83	61.81	1972.28	260.58	136.09	253.86	0.00	1412007.52	3211561.22	40.461873	-104.739680
	2100.00	11.83	61.81	2070.15	279.13	145.77	271.92	0.00	1412017.35	3211579.19	40.461899	-104.739615
	2200.00	11.83	61.81	2168.03	297.67	155.45	289.98	0.00	1412027.19	3211597.17	40.461926	-104.739550
	2300.00	11.83	61.81	2265.91	316.21	165.14	308.05	0.00	1412037.03	3211615.15	40.461952	-104.739485
	2400.00	11.83	61.81	2363.78	334.75	174.82	326.11	0.00	1412046.87	3211633.13	40.461979	-104.739420
	2500.00	11.83	61.81	2461.66	353.29	184.50	344.17	0.00	1412056.70	3211651.11	40.462005	-104.739355
	2600.00	11.83	61.81	2559.54	371.84	194.19	362.24	0.00	1412066.54	3211669.09	40.462032	-104.739290
	2700.00	11.83	61.81	2657.42	390.38	203.87	380.30	0.00	1412076.38	3211687.07	40.462059	-104.739225
	2800.00	11.83	61.81	2755.29	408.92	213.55	398.36	0.00	1412086.21	3211705.05	40.462085	-104.739160
	2900.00	11.83	61.81	2853.17	427.46	223.24	416.43	0.00	1412096.05	3211723.03	40.462112	-104.739095
	3000.00	11.83	61.81	2951.05	446.00	232.92	434.49	0.00	1412105.89	3211741.00	40.462138	-104.739031
	3100.00	11.83	61.81	3048.93	464.54	242.60	452.55	0.00	1412115.73	3211758.98	40.462165	-104.738966
	3200.00	11.83	61.81	3146.80	483.09	252.29	470.62	0.00	1412125.56	3211776.96	40.462191	-104.738901
	3300.00	11.83	61.81	3244.68	501.63	261.97	488.68	0.00	1412135.40	3211794.94	40.462218	-104.738836
	3400.00	11.83	61.81	3342.56	520.17	271.65	506.74	0.00	1412145.24	3211812.92	40.462245	-104.738771
	3500.00	11.83	61.81	3440.43	538.71	281.34	524.81	0.00	1412155.08	3211830.90	40.462271	-104.738706
	3600.00	11.83	61.81	3538.31	557.25	291.02	542.87	0.00	1412164.91	3211848.88	40.462298	-104.738641
	3700.00	11.83	61.81	3636.19	575.80	300.70	560.93	0.00	1412174.75	3211866.86	40.462324	-104.738576
	3800.00	11.83	61.81	3734.07	594.34	310.39	579.00	0.00	1412184.59	3211884.84	40.462351	-104.738511
	3900.00	11.83	61.81	3831.94	612.88	320.07	597.06	0.00	1412194.42	3211902.81	40.462378	-104.738446
	4000.00	11.83	61.81	3929.82	631.42	329.75	615.12	0.00	1412204.26	3211920.79	40.462404	-104.738381
	4100.00	11.83	61.81	4027.70	649.96	339.44	633.18	0.00	1412214.10	3211938.77	40.462431	-104.738317
	4200.00	11.83	61.81	4125.57	668.50	349.12	651.25	0.00	1412223.94	3211956.75	40.462457	-104.738252
	4300.00	11.83	61.81	4223.45	687.05	358.80	669.31	0.00	1412233.77	3211974.73	40.462484	-104.738187
	4400.00	11.83	61.81	4321.33	705.59	368.49	687.37	0.00	1412243.61	3211992.71	40.462510	-104.738122
	4500.00	11.83	61.81	4419.21	724.13	378.17	705.44	0.00	1412253.45	3212010.69	40.462537	-104.738057
	4600.00	11.83	61.81	4517.08	742.67	387.85	723.50	0.00	1412263.28	3212028.67	40.462564	-104.737992
	4700.00	11.83	61.81	4614.96	761.21	397.54	741.56	0.00	1412273.12	3212046.65	40.462590	-104.737927
	4800.00	11.83	61.81	4712.84	779.76	407.22	759.63	0.00	1412282.96	3212064.62	40.462617	-104.737862
	4900.00	11.83	61.81	4810.72	798.30	416.90	777.69	0.00	1412292.80	3212082.60	40.462643	-104.737797
	5000.00	11.83	61.81	4908.59	816.84	426.59	795.75	0.00	1412302.63	3212100.58	40.462670	-104.737732
	5100.00	11.83	61.81	5006.47	835.38	436.27	813.82	0.00	1412312.47	3212118.56	40.462696	-104.737667
	5200.00	11.83	61.81	5104.35	853.92	445.95	831.88	0.00	1412322.31	3212136.54	40.462723	-104.737602
	5300.00	11.83	61.81	5202.22	872.46	455.64	849.94	0.00	1412332.15	3212154.52	40.462750	-104.737538
	5400.00	11.83	61.81	5300.10	891.01	465.32	868.01	0.00	1412341.98	3212172.50	40.462776	-104.737473
	5500.00	11.83	61.81	5397.98	909.55	475.00	886.07	0.00	1412351.82	3212190.48	40.462803	-104.737408
	5600.00	11.83	61.81	5495.86	928.09	484.69	904.13	0.00	1412361.66	3212208.46	40.462829	-104.737343
	5700.00	11.83	61.81	5593.73	946.63	494.37	922.20	0.00	1412371.49	3212226.43	40.462856	-104.737278
	5800.00	11.83	61.81	5691.61	965.17	504.05	940.26	0.00	1412381.33	3212244.41	40.462883	-104.737213
	5900.00	11.83	61.81	5789.49	983.72	513.74	958.32	0.00	1412391.17	3212262.39	40.462909	-104.737148
	6000.00	11.83	61.81	5887.37	1002.26	523.42	976.38	0.00	1412401.01	3212280.37	40.462936	-104.737083
	6100.00	11.83	61.81	5985.24	1020.80	533.10	994.45	0.00	1412410.84	3212298.35	40.462962	-104.737018
	6200.00	11.83	61.81	6083.12	1039.34	542.79	1012.51	0.00	1412420.68	3212316.33	40.462989	-104.736953
	6300.00	11.83	61.81	6181.00	1057.88	552.47	1030.57	0.00	1412430.52	3212334.31	40.463015	-104.736888
	6400.00	11.83	61.81	6278.87	1076.42	562.15	1048.64	0.00	1412440.36	3212352.29	40.463042	-104.736823
	6500.00	11.83	61.81	6376.75	1094.97	571.84	1066.70	0.00	1412450.19	3212370.27	40.463069	-104.736759
	6600.00	11.83	61.81	6474.63	1113.51	581.52	1084.76	0.00	1412460.03	3212388.24	40.463095	-104.736694
	6700.00	11.83	61.81	6572.51	1132.05	591.20	1102.83	0.00	1412469.87	3212406.22	40.463122	-104.736629
KOP, Build/Turn 9 DLS	6720.89	11.83	61.81	6592.95	1135.92	593.23	1106.60	0.00	1412471.92	3212409.98	40.463127	-104.736615
	6800.00	18.38	72.75	6669.30	1155.37	600.77	1125.68	9.00	1412479.62	3212428.99	40.463148	-104.736547
	6900.00	27.07	78.94	6761.46	1193.26	609.83	1163.15	9.00	1412489.00	3212466.38	40.463173	-104.736472
	7000.00	35.90	82.27	6846.66	1245.11	618.15	1214.64	9.00	1412497.77	3212517.79	40.463196	-104.736227
	7100.00	44.80	84.41	6922.80	1309.65	625.54	1278.89	9.00	1412505.71	3212581.97	40.46321	

Comments	MD (ft)	Incl (°)	Azim True (°)	TVD (ft)	VSEC (ft)	NS (ft)	EW (ft)	DLS (°/100ft)	Northing (ftUS)	Easting (ftUS)	Latitude (°)	Longitude (°)
Landing Point, Hold to TD	7300.00	62.66	87.22	7040.67	1470.19	636.81	1439.05	9.00	1412518.35	3212742.03	40.463247	-104.735420
	7400.00	71.60	88.27	7079.49	1562.23	640.41	1531.03	9.00	1412522.74	3212833.97	40.463257	-104.735090
	7500.00	80.56	89.22	7103.52	1659.15	642.52	1627.97	9.00	1412525.68	3212930.88	40.463262	-104.734742
	7600.00	89.51	90.11	7112.17	1758.56	643.10	1727.49	9.00	1412527.11	3213030.39	40.463264	-104.734384
	7604.88	89.95	90.16	7112.19	1763.43	643.09	1732.37	9.00	1412527.14	3213035.27	40.463264	-104.734366
	7700.00	89.95	90.16	7112.27	1858.41	642.83	1827.49	0.00	1412527.69	3213130.39	40.463263	-104.734024
	7800.00	89.95	90.16	7112.36	1958.26	642.55	1927.49	0.00	1412528.27	3213230.38	40.463263	-104.733665
	7900.00	89.95	90.16	7112.45	2058.11	642.27	2027.49	0.00	1412528.85	3213330.37	40.463262	-104.733306
	8000.00	89.95	90.16	7112.54	2157.96	642.00	2127.48	0.00	1412529.43	3213430.37	40.463261	-104.732946
	8100.00	89.95	90.16	7112.62	2257.81	641.72	2227.48	0.00	1412530.01	3213530.36	40.463260	-104.732587
	8200.00	89.95	90.16	7112.71	2357.66	641.45	2327.48	0.00	1412530.60	3213630.36	40.463259	-104.732228
	8300.00	89.95	90.16	7112.80	2457.51	641.17	2427.48	0.00	1412531.18	3213730.35	40.463259	-104.731868
	8400.00	89.95	90.16	7112.88	2557.36	640.90	2527.48	0.00	1412531.76	3213830.35	40.463258	-104.731509
	8500.00	89.95	90.16	7112.97	2657.21	640.62	2627.48	0.00	1412532.34	3213930.34	40.463257	-104.731149
	8600.00	89.95	90.16	7113.06	2757.06	640.34	2727.48	0.00	1412532.92	3214030.34	40.463256	-104.730790
	8700.00	89.95	90.16	7113.15	2856.91	640.07	2827.48	0.00	1412533.50	3214130.33	40.463255	-104.730431
	8800.00	89.95	90.16	7113.23	2956.76	639.79	2927.48	0.00	1412534.08	3214230.32	40.463255	-104.730071
	8900.00	89.95	90.16	7113.32	3056.62	639.52	3027.48	0.00	1412534.66	3214330.32	40.463254	-104.729712
	9000.00	89.95	90.16	7113.41	3156.47	639.24	3127.48	0.00	1412535.24	3214430.31	40.463253	-104.729353
	9100.00	89.95	90.16	7113.50	3256.32	638.97	3227.48	0.00	1412535.82	3214530.31	40.463252	-104.728993
	9200.00	89.95	90.16	7113.58	3356.17	638.69	3327.48	0.00	1412536.40	3214630.30	40.463252	-104.728634
	9300.00	89.95	90.16	7113.67	3456.02	638.41	3427.48	0.00	1412536.98	3214730.30	40.463251	-104.728275
	9400.00	89.95	90.16	7113.76	3555.87	638.14	3527.48	0.00	1412537.56	3214830.29	40.463250	-104.727915
	9500.00	89.95	90.16	7113.84	3655.72	637.86	3627.48	0.00	1412538.14	3214930.29	40.463249	-104.727556
	9600.00	89.95	90.16	7113.93	3755.57	637.59	3727.48	0.00	1412538.72	3215030.28	40.463248	-104.727196
	9700.00	89.95	90.16	7114.02	3855.42	637.31	3827.48	0.00	1412539.30	3215130.27	40.463248	-104.726837
	9800.00	89.95	90.16	7114.11	3955.27	637.04	3927.48	0.00	1412539.88	3215230.27	40.463247	-104.726478
	9900.00	89.95	90.16	7114.19	4055.12	636.76	4027.48	0.00	1412540.47	3215330.26	40.463246	-104.726118
	10000.00	89.95	90.16	7114.28	4154.97	636.48	4127.48	0.00	1412541.05	3215430.26	40.463245	-104.725759
	10100.00	89.95	90.16	7114.37	4254.82	636.21	4227.48	0.00	1412541.63	3215530.25	40.463244	-104.725400
	10200.00	89.95	90.16	7114.45	4354.67	635.93	4327.48	0.00	1412542.21	3215630.25	40.463244	-104.725040
	10300.00	89.95	90.16	7114.54	4454.52	635.66	4427.48	0.00	1412542.79	3215730.24	40.463243	-104.724681
	10400.00	89.95	90.16	7114.63	4554.37	635.38	4527.47	0.00	1412543.37	3215830.24	40.463242	-104.724321
	10500.00	89.95	90.16	7114.72	4654.22	635.10	4627.47	0.00	1412543.95	3215930.23	40.463241	-104.723962
	10600.00	89.95	90.16	7114.80	4754.07	634.83	4727.47	0.00	1412544.53	3216030.22	40.463240	-104.723603
	10700.00	89.95	90.16	7114.89	4853.92	634.55	4827.47	0.00	1412545.11	3216130.22	40.463239	-104.723244
	10800.00	89.95	90.16	7114.98	4953.77	634.28	4927.47	0.00	1412545.69	3216230.21	40.463239	-104.722884
	10900.00	89.95	90.16	7115.07	5053.62	634.00	5027.47	0.00	1412546.27	3216330.21	40.463238	-104.722525
	11000.00	89.95	90.16	7115.15	5153.47	633.73	5127.47	0.00	1412546.85	3216430.20	40.463237	-104.722165
	11100.00	89.95	90.16	7115.24	5253.32	633.45	5227.47	0.00	1412547.43	3216530.20	40.463236	-104.721806
11200.00	89.95	90.16	7115.33	5353.17	633.17	5327.47	0.00	1412548.01	3216630.19	40.463235	-104.721446	
11300.00	89.95	90.16	7115.41	5453.02	632.90	5427.47	0.00	1412548.59	3216730.19	40.463235	-104.721087	
11400.00	89.95	90.16	7115.50	5552.87	632.62	5527.47	0.00	1412549.17	3216830.18	40.463234	-104.720728	
11500.00	89.95	90.16	7115.59	5652.72	632.35	5627.47	0.00	1412549.76	3216930.17	40.463233	-104.720368	
11600.00	89.95	90.16	7115.68	5752.57	632.07	5727.47	0.00	1412550.34	3217030.17	40.463232	-104.720009	
11700.00	89.95	90.16	7115.76	5852.42	631.80	5827.47	0.00	1412550.92	3217130.16	40.463231	-104.719650	
11800.00	89.95	90.16	7115.85	5952.27	631.52	5927.47	0.00	1412551.50	3217230.16	40.463230	-104.719290	
11900.00	89.95	90.16	7115.94	6052.12	631.24	6027.47	0.00	1412552.08	3217330.15	40.463230	-104.718931	
12000.00	89.95	90.16	7116.03	6151.97	630.97	6127.47	0.00	1412552.66	3217430.15	40.463229	-104.718571	
12100.00	89.95	90.16	7116.11	6251.82	630.69	6227.47	0.00	1412553.24	3217530.14	40.463228	-104.718212	
12200.00	89.95	90.16	7116.20	6351.67	630.42	6327.47	0.00	1412553.82	3217630.14	40.463227	-104.717853	
12300.00	89.95	90.16	7116.29	6451.52	630.14	6427.47	0.00	1412554.40	3217730.13	40.463226	-104.717493	
12400.00	89.95	90.16	7116.37	6551.37	629.87	6527.47	0.00	1412554.98	3217830.12	40.463226	-104.717134	
12500.00	89.95	90.16	7116.46	6651.22	629.59	6627.47	0.00	1412555.56	3217930.12	40.463225	-104.716775	
12600.00	89.95	90.16	7116.55	6751.07	629.31	6727.47	0.00	1412556.14	3218030.11	40.463224	-104.716415	
12700.00	89.95	90.16	7116.64	6850.92	629.04	6827.47	0.00	1412556.72	3218130.11	40.463223	-104.716056	
12800.00	89.95	90.16	7116.72	6950.77	628.76	6927.46	0.00	1412557.30	3218230.10	40.463222	-104.715696	
12900.00	89.95	90.16	7116.81	7050.62	628.49	7027.46	0.00	1412557.88	3218330.10	40.463221	-104.715337	
13000.00	89.95	90.16	7116.90	7150.47	628.21	7127.46	0.00	1412558.46	3218430.09	40.463221	-104.714978	
13100.00	89.95	90.16	7116.99	7250.32	627.94	7227.46	0.00	1412559.04	3218530.09	40.463220	-104.714618	
13200.00	89.95	90.16	7117.07	7350.18	627.66	7327.46	0.00	1412559.63	3218630.08	40.463219	-104.714259	
13300.00	89.95	90.16	7117.16	7450.03	627.38	7427.46	0.00	1412560.21	3218730.07	40.463218	-104.713900	
13400.00	89.95	90.16	7117.25	7549.88	627.11	7527.46	0.00	1412560.79	3218830.07	40.463217	-104.713540	
13500.00	89.95	90.16	7117.33	7649.73	626.83	7627.46	0.00	1412561.37	3218930.06	40.463216	-104.713181	
13600.00	89.95	90.16	7117.42	7749.58	626.56	7727.46	0.00	1412561.95	3219030.06	40.463215	-104.712821	
13700.00	89.95	90.16	7117.51	7849.43	626.28	7827.46	0.00	1412562.53	3219130.05	40.463215	-104.712462	
13800.00	89.95	90.16	7117.60	7949.28	626.00	7927.46	0.00	1414				

Comments	MD (ft)	Incl (°)	Azim True (°)	TVD (ft)	VSEC (ft)	NS (ft)	EW (ft)	DLS (°/100ft)	Northing (ftUS)	Easting (ftUS)	Latitude (°)	Longitude (°)
----------	------------	-------------	------------------	-------------	--------------	------------	------------	------------------	--------------------	-------------------	-----------------	------------------

Survey Type: Def Plan

Survey Error Model: ISCWSA Rev 0 *** 3-D 95.000% Confidence 2.7955 sigma
Survey Program:

Description	Part	MD From (ft)	MD To (ft)	EOU Freq (ft)	Hole Size (in)	Casing Diameter (in)	Expected Max Inclination (deg)	Survey Tool Type	Borehole / Survey
	1	0.000	4.000	1/100.000	13.500	9.625		NAL_MWD_IFR1-Depth Only	Original Hole / Seeley 108-08C-30-L R0 mdv 01Aug19
	1	4.000	1800.000	1/100.000	13.500	9.625		NAL_MWD_IFR1	Original Hole / Seeley 108-08C-30-L R0 mdv 01Aug19
	1	1800.000	17700.060	1/100.000	8.500	5.500		NAL_MWD_IFR1+MS	Original Hole / Seeley 108-08C-30-L R0 mdv 01Aug19