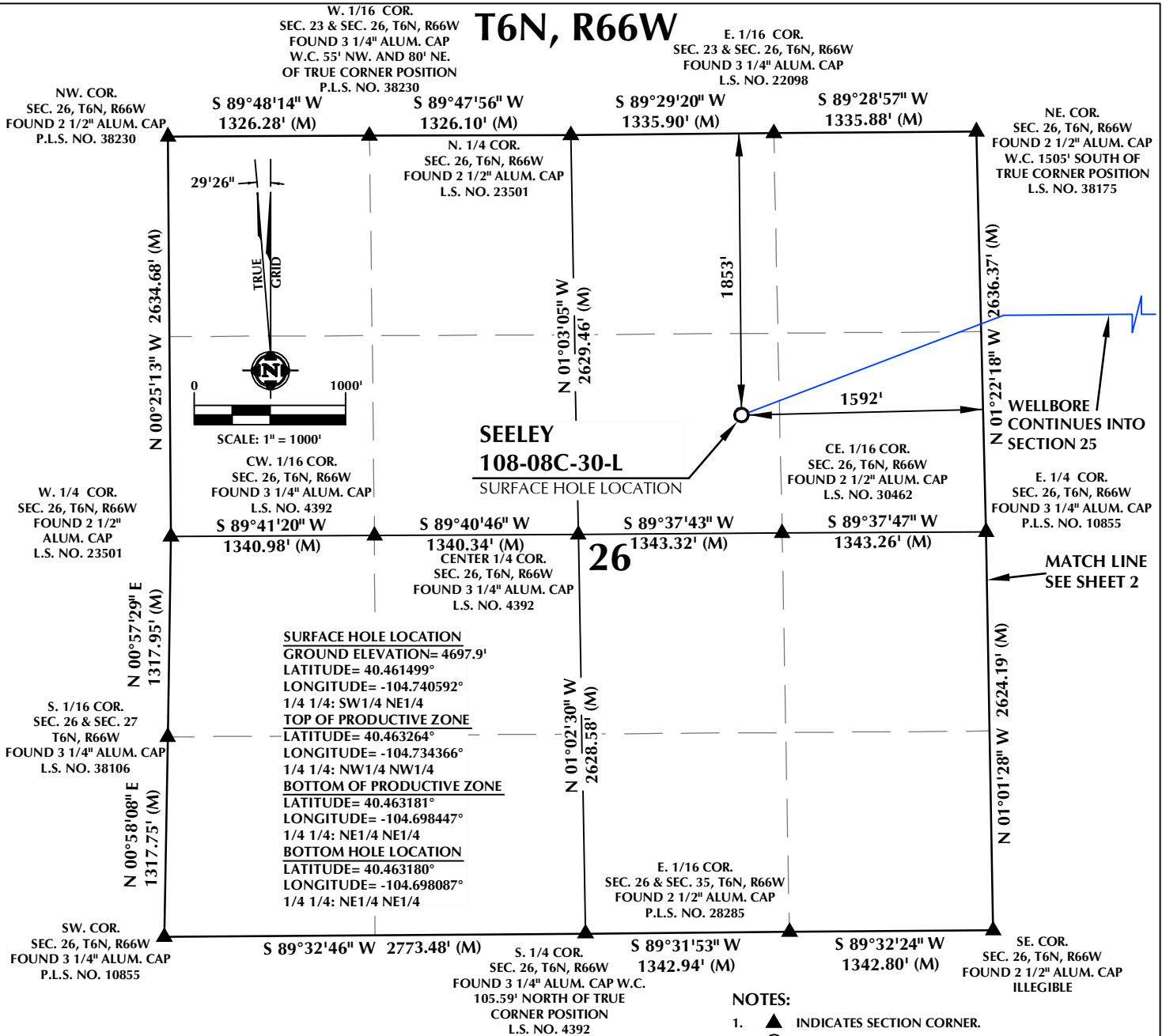


T6N, R66W



SURFACE HOLE LOCATION
 GROUND ELEVATION= 4697.9'
 LATITUDE= 40.461499°
 LONGITUDE= -104.740592°
 1/4 1/4: SW1/4 NE1/4
TOP OF PRODUCTIVE ZONE
 LATITUDE= 40.463264°
 LONGITUDE= -104.734366°
 1/4 1/4: NW1/4 NW1/4
BOTTOM OF PRODUCTIVE ZONE
 LATITUDE= 40.463181°
 LONGITUDE= -104.698447°
 1/4 1/4: NE1/4 NE1/4
BOTTOM HOLE LOCATION
 LATITUDE= 40.463180°
 LONGITUDE= -104.698087°
 1/4 1/4: NE1/4 NE1/4

CERTIFICATE OF SURVEYOR:

THIS IS TO CERTIFY THAT THE ABOVE PLAT WAS PREPARED FROM FIELD NOTES OF ACTUAL SURVEY MADE BY ME OR UNDER MY SUPERVISION AND THAT THE SAME ARE TRUE AND CORRECT TO THE BEST OF MY KNOWLEDGE AND BELIEF. THIS CERTIFICATE DOES NOT REPRESENT A LAND SURVEY PLAT OR IMPROVEMENT SURVEY PLAT AS DEFINED BY C.S. 38-51-302 AND CANNOT BE RELIED UPON TO DETERMINE OWNERSHIP.

Randall K. French
 38512
 PROFESSIONAL LAND SURVEYOR

RANDALL K. FRENCH
 PROFESSIONAL LAND SURVEYOR
 COLORADO REGISTRATION NUMBER: 38512

NOTICE:
 ACCORDING TO COLORADO STATE LAW YOU MUST COMMENCE A LEGAL ACTION BASED UPON ANY DEFECT IN THIS SURVEY WITHIN THREE YEARS AFTER YOU FIRST DISCOVER SUCH DEFECT. IN NO EVENT MAY ANY ACTION BASED UPON ANY DEFECT IN THIS SURVEY BE COMMENCED MORE THAN TEN YEARS FROM THE DATE ON THE CERTIFICATION SHOWN HEREON.

WELL DISTANCES:

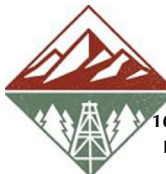
BUILDING: ±1188' S
BUILDING UNIT: ±1302' S
HIGH OCCUPANCY BUILDING UNIT: 5280'+
DESIGNATED OUTSIDE ACTIVITY AREA: 5280'+
PUBLIC ROAD: ±976' NE
ABOVE GROUND UTILITY: ±968' NE
RAILROAD: 5280'+
PROPERTY LINE: ±251' E
SCHOOL FACILITY: 5280'+
SCHOOL PROPERTY LINE: 5280'+
CHILD CARE CENTER: 5280'+

NOTES:

- ▲ INDICATES SECTION CORNER.
- INDICATES CALCULATED CORNER.
- DRAWING LATITUDE AND LONGITUDE COORDINATES ARE NAD 83 (2011)(EPOCH:2010). ELEVATION BASED ON NAVD88 (GEOID12B).
- BASIS OF BEARING DERIVED FROM COLORADO COORDINATE SYSTEM OF 1983 NORTH ZONE.
- ALL MEASURED DISTANCES ARE GRID. COMBINED SCALE FACTOR: .99974177 CALCULATED FROM THE E. 1/4 CORNER OF SECTION 26, T6N, R66W.
- OPERATOR: PRESTON KNUSTEN / PDOP = 1.2.
- SEE ADDENDUM TO WELL LOCATION CERTIFICATE FOR EXISTING IMPROVEMENTS WITHIN 500' OF THE WELL PAD.
- WELL FOOTAGES ARE MEASURED AT RIGHT ANGLES TO THE SECTION LINES.
- THE BOTTOM HOLE LOCATION BEARS N89°40'02"E, 10095' FROM THE TOP OF PRODUCTIVE ZONE.

WELL PAD - CHALK-SEELEY FEDERAL 7-26 PAD

SEELEY 108-08C-30-L
WELL LOCATION CERTIFICATE
 1853' FNL & 1592' FEL SWNE (SURFACE HOLE LOCATION)
 LOCATED IN SECTION 26
 1208' FNL & 150' FWL NWNW (TOP OF PRODUCTIVE ZONE)
 LOCATED IN SECTION 25
 T6N, R66W, 6TH P.M.
 1203' FNL & 460' FEL NENE (BOTTOM OF PRODUCTIVE ZONE)
 1203' FNL & 360' FEL NENE (BOTTOM HOLE LOCATION)
 LOCATED IN SECTION 30, T6N, R66W, 6TH P.M.
 WELD COUNTY, COLORADO



SRC ENERGY
 1675 Broadway, Suite 2600
 Denver, Colorado 80202



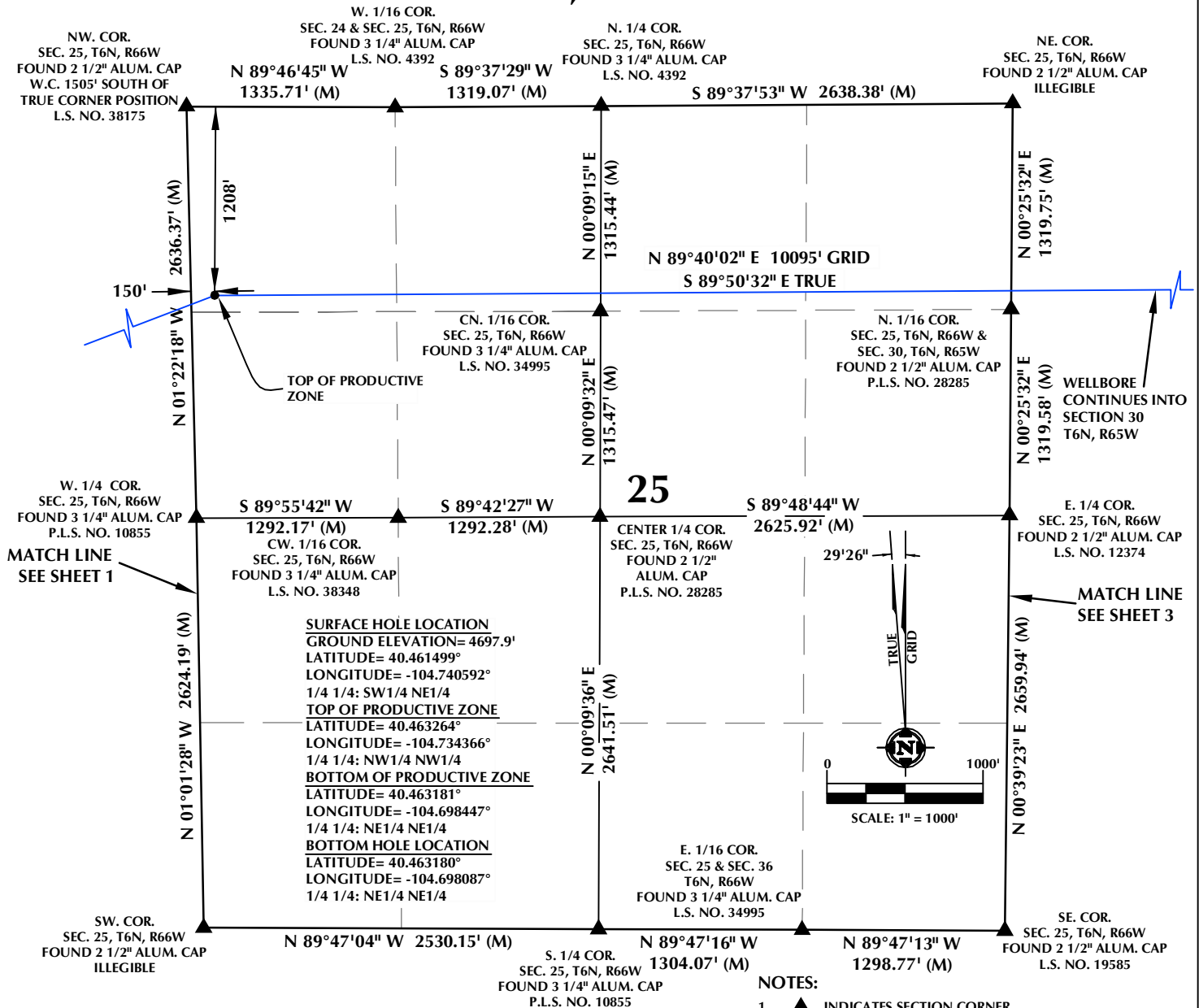
CONSULTING, LLC

SHERIDAN OFFICE
 1095 Saberton Avenue
 Sheridan, Wyoming 82801
 Phone 307-674-0609

LOVELAND OFFICE
 6706 North Franklin Avenue
 Loveland, Colorado 80538
 Phone 970-776-4331

DRAFTED BY:	LMO	CHECKED BY:	RKF	SHEET NO:
DATE DRAFTED:	9/26/17	DATE SURVEYED:	7/7/17	1
REVISED:	8/9/19	FILE NAME:	17-41	1 OF 3

T6N, R66W



CERTIFICATE OF SURVEYOR:

THIS IS TO CERTIFY THAT THE ABOVE PLAT WAS PREPARED FROM FIELD NOTES OF ACTUAL SURVEY MADE BY ME OR UNDER MY SUPERVISION AND THAT THE SAME ARE TRUE AND CORRECT TO THE BEST OF MY KNOWLEDGE AND BELIEF. THIS CERTIFICATE DOES NOT REPRESENT A LAND SURVEY PLAT OR IMPROVEMENT SURVEY PLAT AS DEFINED BY C.S. 38-51-302 AND CANNOT BE RELIED UPON TO DETERMINE OWNERSHIP.

Randall K. French
RANDALL K. FRENCH
 PROFESSIONAL LAND SURVEYOR
 COLORADO REGISTRATION NUMBER: 38512
 9/7/17

NOTICE:
 ACCORDING TO COLORADO STATE LAW YOU MUST COMMENCE A LEGAL ACTION BASED UPON ANY DEFECT IN THIS SURVEY WITHIN THREE YEARS AFTER YOU FIRST DISCOVER SUCH DEFECT. IN NO EVENT MAY ANY ACTION BASED UPON ANY DEFECT IN THIS SURVEY BE COMMENCED MORE THAN TEN YEARS FROM THE DATE ON THE CERTIFICATION SHOWN HEREON.

WELL DISTANCES:

BUILDING: ±1188' S
BUILDING UNIT: ±1302' S
HIGH OCCUPANCY BUILDING UNIT: 5280'+
DESIGNATED OUTSIDE ACTIVITY AREA: 5280'+
PUBLIC ROAD: ±976' NE
ABOVE GROUND UTILITY: ±968' NE
RAILROAD: 5280'+
PROPERTY LINE: ±251' E
SCHOOL FACILITY: 5280'+
SCHOOL PROPERTY LINE: 5280'+
CHILD CARE CENTER: 5280'+

NOTES:

- ▲ INDICATES SECTION CORNER
- INDICATES CALCULATED CORNER
- DRAWING LATITUDE AND LONGITUDE COORDINATES ARE NAD 83 (2011)(EPOCH:2010)
- ELEVATION BASED ON NAVD88 (GEOID12B)
- BASIS OF BEARING DERIVED FROM COLORADO COORDINATE SYSTEM OF 1983 NORTH ZONE.
- ALL MEASURED DISTANCES ARE GRID.
COMBINED SCALE FACTOR: .99974177 CALCULATED FROM THE E. 1/4 CORNER OF SECTION 26, T6N, R66W
- OPERATOR: PRESTON KNUSTEN / PDOP = 1.2
- SEE ADDENDUM TO WELL LOCATION CERTIFICATE FOR EXISTING IMPROVEMENTS WITHIN 500' OF THE WELL PAD.
- WELL FOOTAGES ARE MEASURED AT RIGHT ANGLES TO THE SECTION LINES.
- THE BOTTOM HOLE LOCATION BEARS N89°40'02"E, 10095' FROM THE TOP OF PRODUCTIVE ZONE.

WELL PAD - CHALK-SEELEY FEDERAL 7-26 PAD

SEELEY 108-08C-30-L
WELL LOCATION CERTIFICATE
 1853' FNL & 1592' FEL SWNE (SURFACE HOLE LOCATION)
 LOCATED IN SECTION 26
 1208' FNL & 150' FWL NWNW (TOP OF PRODUCTIVE ZONE)
 LOCATED IN SECTION 25
 T6N, R66W, 6TH P.M.
 1203' FNL & 460' FEL NENE (BOTTOM OF PRODUCTIVE ZONE)
 1203' FNL & 360' FEL NENE (BOTTOM HOLE LOCATION)
 LOCATED IN SECTION 30, T6N, R65W, 6TH P.M.
 WELD COUNTY, COLORADO



SRC ENERGY
 1675 Broadway, Suite 2600
 Denver, Colorado 80202



CONSULTING, LLC

SHERIDAN OFFICE
 1095 Saberton Avenue
 Sheridan, Wyoming 82801
 Phone 307-674-0609

LOVELAND OFFICE
 6706 North Franklin Avenue
 Loveland, Colorado 80538
 Phone 970-776-4331

DRAFTED BY:	LMO	CHECKED BY:	RKF	SHEET NO:
DATE DRAFTED:	9/26/17	DATE SURVEYED:	7/7/17	2
REVISED:	8/9/19	FILE NAME:	17-41	2 OF 3

