

PJR - ConocoPhillips Reserve 3-65 35-34 1CH Surface

PJR - Conoco Reserve 3-65 35-34 1CH Production

HALLIBURTON

iCem[®] Service

CONOCO/PHILLIPS COMPANY EBUSINESS

Reserve 3-65 35-34 1CH Surface

Sincerely,
Meghan Jacobs

Legal Notice

Disclaimer:

All information in this report is provided subject to the terms and conditions which govern the services provided by Halliburton. Halliburton personnel use their best efforts in gathering information and their best judgment in interpreting it, but any interpretation, research, analysis or recommendation furnished by Halliburton are opinions based upon inferences from measurements and empirical relationships and assumptions, which inferences and empirical relationships and assumptions are not infallible, and with respect to which professionals in the industry may differ. iCem 3D Displacement results are used to understand how fluids intermix during a cement job. Simulation and 3D displacement results are not intended as and should not be used as a replacement for bond logs in determining top of cement. Current 3D model calculations are known to model more volume than the input volume for standard cases due to known calculation improvements required. For rotational cases, the modeled volume will be impacted by the same calculations impacting the standard cases, as well as additional constraints imposed to make the calculation time required operationally feasible. Therefore, until further notice, 3D displacement results should not be used for replacement of a bond log, or used as an identifier of top of cement. HALLIBURTON IS UNABLE TO GUARANTEE THE ACCURACY OF ANY CHART INTERPRETATION, RESEARCH ANALYSIS, OR JOB RECOMMENDATION and any interpretation or recommendation is not for use of or reliance upon by any third party. The customer has full responsibility for any of its decisions which are based on the information provided in this report.

Table of Contents

1.0	Cementing Job Summary	4
1.1	Executive Summary and Lab Report	4
2.0	Real-Time Job Summary	9
2.1	Job Event Log	9
3.0	Attachments.....	11
3.1	Reserve 3-65 35-34 1CH Surface – Job Chart	11

1.0 Cementing Job Summary

1.1 Executive Summary

Halliburton appreciates the opportunity to perform the cementing services on the **Reserve 3-65 35-34 1CH** cement **Surface** casing job. A pre-job safety meeting was held before the job where details of the job were discussed, potential safety hazards were reviewed, and environmental compliance procedures were outlined.

Approximately 15 bbls of spacer were returned to surface.

Halliburton maintains a continuous quality improvement process and appreciates any comments or suggestions that you may have. Halliburton again thanks you for the opportunity to perform service work on this well. We hope to be your solutions provider for future projects.

Respectfully,

Halliburton Fort Lupton

The Road to Excellence Starts with Safety

Sold To #: 352431		Ship To #: 0003958595		Quote #: 0022592600		Sales Order #: 0905770054				
Customer: CONOCO/PHILLIPS COMPANY-EBUS				Customer Rep: Jason Beach / Aron Negusse						
Well Name: RESERVE 3-65 35-34			Well #: 1CH		API/UWI #: 05-001-10453-00					
Field: WILDCAT		City (SAP): WATKINS		County/Parish: ADAMS		State: COLORADO				
Legal Description: NE NE-35-3S-65W-860FNL-541FEL										
Contractor:				Rig/Platform Name/Num: Nabors B16						
Job BOM: 7521 7521										
Well Type: HORIZONTAL OIL										
Sales Person: HALAMERICA/HB41307				Srv Supervisor: Michael Loughran						
Job										
Formation Name										
Formation Depth (MD)		Top		Bottom						
Form Type				BHST						
Job depth MD		2054.3ft		Job Depth TVD						
Water Depth				Wk Ht Above Floor		5				
Perforation Depth (MD)		From		To						
Well Data										
Description	New / Used	Size in	ID in	Weight lbm/ft	Thread	Grade	Top MD ft	Bottom MD ft	Top TVD ft	Bottom TVD ft
Casing		16	15.25				0	125		
Casing		9.625	8.921	36	STC	J-55	0	2054.3		
Open Hole Section			13.5				100	2054.3		
Tools and Accessories										
Type	Size in	Qty	Make	Depth ft		Type	Size in	Qty	Make	
Guide Shoe	9.625					Top Plug	9.625	1	HES	
Float Shoe	9.625			2054.3		Bottom Plug	9.625	1	HES	
Float Collar	9.625			2011.5		SSR plug set	9.625			
Insert Float	9.625					Plug Container	9.625	1	HES	
Stage Tool	9.625					Centralizers	9.625			
Fluid Data										
Stage/Plug #: 1										

Fluid #	Stage Type	Fluid Name	Qty	Qty UoM	Mixing Density lbm/gal	Yield ft ³ /sack	Mix Fluid Gal	Rate bbl/min	Total Mix Fluid Gal	
1	Tuned Prime Cement Spacer	SBM FDP-C1337-18 CEMENT SPACER SYS	50	bbl	10	13.05		8		
2	SwiftCem	SWIFTCEM (TM) SYSTEM	545	sack	12.5	2.16		8	12.32	
3	SwiftCem	SWIFTCEM (TM) SYSTEM	228	sack	13.5	1.74		8	9.2	
4	Displacement	Displacement	155.5	bbl	8.33			8		
Cement Left In Pipe										
Amount		45 ft			Reason			Shoe Joint		
Mix Water:		pH 6-6.5		Mix Water Chloride:		Less 200 ppm		Mix Water Temperature:		62 °F
Cement Temperature:				Plug Displaced by:		8.33 lb/gal		Disp. Temperature:		
Plug Bumped?		Yes		Bump Pressure:		1055		Floats Held?		Yes
Cement Returns:				Returns Density:				Returns Temperature:		
Comment Plug bumped floats held, .5 bbl back, 30 min. casint test 1800 psi, Test good, Floats hold 1.5 bbl back										

HALLIBURTON

Rockies, Brighton

Lab Results- Lead

Job Information

Request/Slurry	2563239/1	Rig Name	Nabors B16	Date	13/JUN/2019
Submitted By	Meghan Jacobs	Job Type	Surface Casing	Bulk Plant	Brighton
Customer	ConocoPhillips	Location	Weld	Well	Reserve 3-65-35-34 1CH

Well Information

Casing/Liner Size	9.625 in	Depth MD	2053 ft	BHST	35°C / 95°F
Hole Size	13.5 in	Depth TVD	2053 ft	BHCT	34°C / 93°F
Pressure	1229 psi				

Cement Information - Lead Design

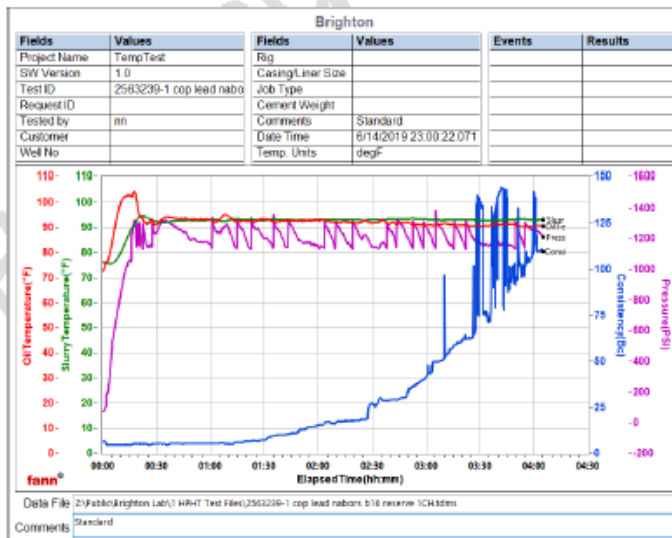
Conc	UOM	Cement/Additive	MP	Sample Type	Sample Date	Lot No.	Cement Properties		
100	% BWOC	Cemex Type I-II		Bulk Blend	15.06.19		Slurry Density	12.5	lbm/gal
12.32	gal/sack	Field (Fresh) Water		Chemicals	03.05.19	COP water	Slurry Yield	2.16	ft3/sack
2	% BWOC	Cal-Seal 60	PB	Bulk Blend	15.06.19		Water Requirement	12.32	gal/sack
1.25	% BWOC	Econolite (Powder - PB)	PB	Bulk Blend	15.06.19		Total Mix Fluid	12.32	gal/sack
0.2	% BWOC	VERSASET (PB)	PB	Bulk Blend	15.06.19				
2	lb/sk	Mountain Enhancer 923	PB	Bulk Blend	15.06.19				

Operation Test Results Request ID 2563239/1

Thickening Time, Request Test ID:36578022

15/JUN/2019

Temp (degF)	Pressure (psi)	Reached in (min)	Start BC	30 Bc (hh:mm)	40 Bc (hh:mm)	50 Bc (hh:mm)	70 Bc (hh:mm)	100 Bc (hh:mm)
93	1229	17	6	2:34	2:59	3:07	3:30	3:55



These are draft results and have not been approved for final use.

This report is the property of Halliburton Energy Services and neither it nor any part thereof, nor a copy thereof, is to be published or disclosed without first securing the expressed written approval of Halliburton. It may however be used in the course of regular business operations by any person or concern receiving such report from Halliburton. This report is for information purposes only and the content is limited to the sample described. Halliburton makes no warranties, expressed or implied, as to the accuracy of the contents or results. Any user of this report agrees Halliburton shall not be liable for any loss or damage regardless of cause, including any act or omission of Halliburton, resulting from the use hereof.

HALLIBURTON

Lab Results- Tail

Rockies, Brighton

Job Information

Request/Slurry	2563240/1	Rig Name	Nabors B16	Date	13/JUN/2019
Submitted By	Meghan Jacobs	Job Type	Surface Casing	Bulk Plant	Brighton
Customer	ConocoPhillips	Location	Weld	Well	Reserve 3-65-35-34 1CH

Well Information

Casing/Liner Size	9.625 in	Depth MD	2053 ft	BHST	35°C / 95°F
Hole Size	13.5 in	Depth TVD	2053 ft	BHCT	34°C / 93°F
Pressure	1229 psi				

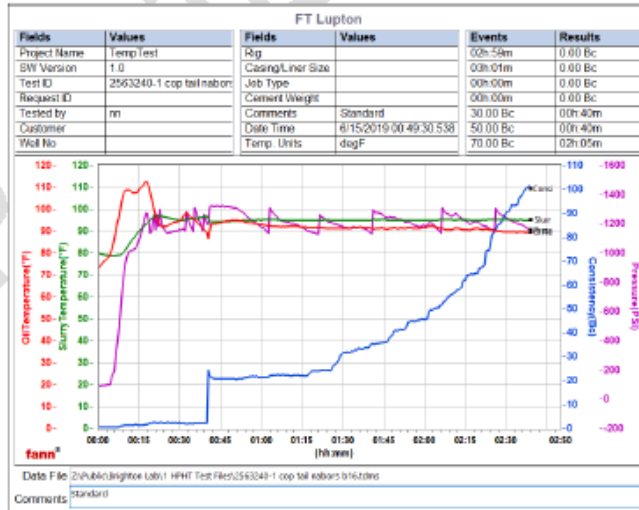
Cement Information - Tail Design

Conc	UOM	Cement/Additive	MP	Sample Type	Sample Date	Lot No.	Cement Properties		
100	% BWOC	Cemex Type I-II		Bulk Blend	15.06.19		Slurry Density	13.5	lbm/gal
9.2	gal/sack	Fresh Water		Chemicals	09.04.13		Slurry Yield	1.74	ft ³ /sack
2	% BWOC	Cal-Seal 60	PB	Bulk Blend	15.06.19		Water Requirement	9.2	gal/sack
1.25	% BWOC	Econolite (Powder - PB)	PB	Bulk Blend	15.06.19		Total Mix Fluid	9.2	gal/sack
0.2	% BWOC	VERSASET (PB)	PB	Bulk Blend	15.06.19				
2	lb/sk	Mountain Enhancer 923	PB	Bulk Blend	15.06.19				

Operation Test Results Request ID 2563240/1

Thickening Time - ON-OFF-ON, Request Test ID:36578026 15/JUN/2019

Test Temp (degF)	Pressure (psi)	Reached in (min)	30 Bc (hh:mm)	50 Bc (hh:mm)	70 Bc (hh:mm)	100 Bc (hh:mm)	Start Bc	Stirring before stop (mins)	Static Period (min)	Peak reading (BC)
95	1229	17	1:29	2:03	2:22	2:37	1	30	10	24



These are draft results and have not been approved for final use.
 This report is the property of Halliburton Energy Services and neither it nor any part thereof, nor a copy thereof, is to be published or disclosed without first securing the expressed written approval of Halliburton. It may however be used in the course of regular business operations by any person or concern receiving such report from Halliburton. This report is for information purposes only and the content is limited to the sample described. Halliburton makes no warranties, expressed or implied, as to the accuracy of the contents or results. Any user of this report agrees Halliburton shall not be liable for any loss or damage regardless of cause, including any act or omission of Halliburton, resulting from the use hereof.

2.0 Real-Time Job Summary

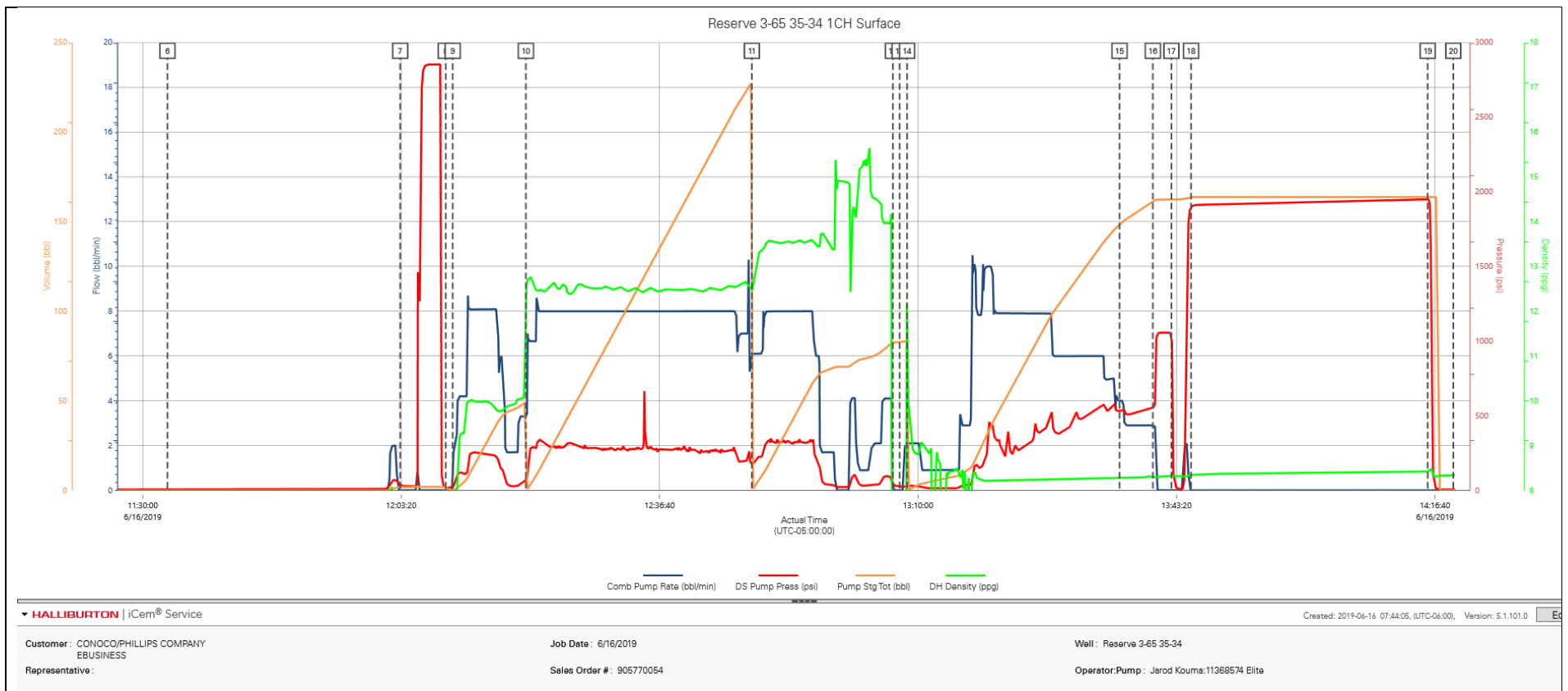
2.1 Job Event Log

Type	Seq. No.	Activity	Graph Label	Date	Time	Source	Comb Pump Rate (bbl/min)	DS Pump Press (psi)	DH Density (ppg)	Comments
Event	1	Call Out	Call Out	6/16/2019	01:15:00	USER				Crew called out for on location time of 0700 hrs 6/16/2019.
Event	2	Arrive At Loc	Arrive At Loc	6/16/2019	05:30:00	USER				Arrive at location, Rig running casing, Meet with customer, TP 2054.3 J55 36#, F/C 2011.5, TD 2064, 13.5 Hole, 125' 16" 15.25 ID Conductor, HES top and bottom plug Brought by HES Supervisor, 8.55 WBM, Water 62 Deg., PH 6-6.5, Chlorides and sulfates less that 200 ppm
Event	3	Pre-Rig Up Safety Meeting	Pre-Rig Up Safety Meeting	6/16/2019	05:40:00	USER				Pre rig up safety meeting
Event	4	Rig-Up Equipment	Rig-Up Equipment	6/16/2019	05:45:00	USER				Rig up all service lines and iron to buffer zone
Event	5	Pre-Job Safety Meeting	Pre-Job Safety Meeting	6/16/2019	11:00:00	USER	0.00	3.00	7.70	Discuss job procedures, Discuss job hazards and hazards of Halliburton Equipment.
Event	6	Start Job	Start Job	6/16/2019	11:33:12	COM4	0.00	6.00	7.70	Begin recording data
Event	7	Test Lines	Test Lines	6/16/2019	12:03:12	COM4	0.00	34.00	7.55	Pressure test to 2800 psi
Event	8	Drop Bottom Plug	Drop Bottom Plug	6/16/2019	12:09:05	COM4	0.00	13.00	7.64	Bottom plug verified by CM
Event	9	Pump Spacer 1	Pump Spacer 1	6/16/2019	12:09:59	COM4	0.00	20.00	7.64	50 bbls Tuned Prime Spacer 10#, 13.05 yield, 87.2 gal/sack
Event	10	Pump Lead Cement	Pump Lead Cement	6/16/2019	12:19:25	COM4	3.30	66.00	12.17	545 sacks SwiftCem, 209.66 bbls, 2.16 yield, 12.32 gal/sack
Event	11	Pump Tail Cement	Pump Tail Cement	6/16/2019	12:48:34	COM4	6.10	169.00	12.46	228 sacks SwiftCem, 70.66 bbls, 13.5 ppg, 1.74 yield, 9.2 gal/sack

Event	12	Shutdown	Shutdown	6/16/2019	13:06:45	COM4	0.00	42.00	1.24	Shutdown to drop top plug
Event	13	Drop Top Plug	Drop Top Plug	6/16/2019	13:07:37	COM4	0.00	28.00	0.69	Verified by customer
Event	14	Pump Displacement	Pump Displacement	6/16/2019	13:08:35	COM4	2.10	26.00	11.90	155.5 bbls fresh water displacement
Event	15	Other	Other	6/16/2019	13:35:59	COM4	4.00	530.00	8.28	Spacer returns to surface at 140 bbls into displacement, 15 bbls spacer to surface
Event	16	Bump Plug	Bump Plug	6/16/2019	13:40:17	USER	2.90	555.00	8.29	500 psi over FCP of 555, Bump to 1055 psi
Event	17	Check Floats	Check Floats	6/16/2019	13:42:40	USER	0.00	1056.00	8.33	.5 bbl back, Floats hold
Event	18	Pressure Up Well	Pressure Up Well	6/16/2019	13:45:13	COM4	0.00	1899.00	8.35	30 min casing test 3000 psi
Event	19	Other	Other	6/16/2019	14:15:44	COM4	0.00	1951.00	8.42	Release pressure, floats hold, 1.5 bbl back, Test good
Event	20	End Job	End Job	6/16/2019	14:19:02	COM4	0.00	6.00	8.34	Stop recording data
Event	21	Pre-Rig Down Safety Meeting	Pre-Rig Down Safety Meeting	6/16/2019	14:25:00	USER				Discuss safe rig down
Event	22	Rig-Down Equipment	Rig-Down Equipment	6/16/2019	14:30:00	USER				Rig down equipment
Event	23	Crew Leave Location	Crew Leave Location	6/16/2019	16:00:00	USER				Thanks for choosing Halliburton Energy Services!

3.0 Attachments

3.1 Reserve 3-65 35-34 1CH Surface – Job Chart



HALLIBURTON

iCem[®] Service

CONOCO/PHILLIPS COMPANY EBUSINESS

Ft. Lupton District, COLORADO

For: JASON BEACH

Date: Monday, July 01, 2019

TOP OUT

RESERVE 3-65 35-34 1CH

Case 1

Job Date: Thursday, June 27, 2019

Sincerely,

VITALI NEVERDASOV

Legal Notice

Disclaimer:

All information in this report is provided subject to the terms and conditions which govern the services provided by Halliburton. Halliburton personnel use their best efforts in gathering information and their best judgment in interpreting it, but any interpretation, research, analysis or recommendation furnished by Halliburton are opinions based upon inferences from measurements and empirical relationships and assumptions, which inferences and empirical relationships and assumptions are not infallible, and with respect to which professionals in the industry may differ. iCem 3D Displacement results are used to understand how fluids intermix during a cement job. Simulation and 3D displacement results are not intended as and should not be used as a replacement for bond logs in determining top of cement. Current 3D model calculations are known to model more volume than the input volume for standard cases due to known calculation improvements required. For rotational cases, the modeled volume will be impacted by the same calculations impacting the standard cases, as well as additional constraints imposed to make the calculation time required operationally feasible. Therefore, until further notice, 3D displacement results should not be used for replacement of a bond log, or used as an identifier of top of cement. HALLIBURTON IS UNABLE TO GUARANTEE THE ACCURACY OF ANY CHART INTERPRETATION, RESEARCH ANALYSIS, OR JOB RECOMMENDATION and any interpretation or recommendation is not for use of or reliance upon by any third party. The customer has full responsibility for any of its decisions which are based on the information provided in this report.

Table of Contents

1.0	Cementing Job Summary	4
1.1	Executive Summary	4
2.0	Real-Time Job Summary	5
2.1	Job Event Log	5
3.0	Attachments.....	7
3.1	Case 1-Custom Results (1).png	7

1.0 Cementing Job Summary

1.1 Executive Summary

Halliburton appreciates the opportunity to perform the cementing services on the cement casing job. A pre-job safety meeting was held before the job where details of the job were discussed, potential safety hazards were reviewed, and environmental compliance procedures were outlined.

Halliburton maintains a continuous quality improvement process and appreciates any comments or suggestions that you may have. Halliburton again thanks you for the opportunity to perform service work on this well. We hope to be your solutions provider for future projects.

Respectfully,

Halliburton Fort Lupton

2.0 Real-Time Job Summary

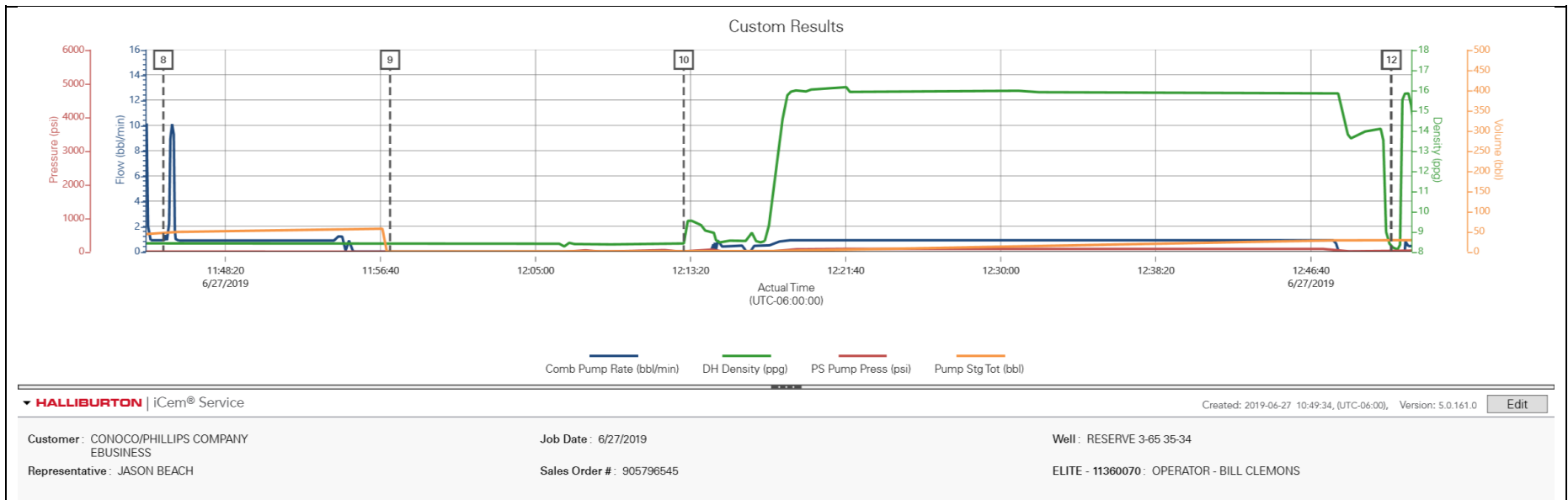
2.1 Job Event Log

Type	Seq. No.	Activity	Graph Label	Date	Time	Source	Comb Pump Rate <i>(bbl/min)</i>	DH Density <i>(ppg)</i>	PS Pump Press <i>(psi)</i>	Pump Stg Tot <i>(bbl)</i>	Comments
Event	1	Depart from Service Center or Other Site	Depart from Service Center or Other Site	6/13/2019	00:30:00	USER					
Event	2	Other	SPOT TRUCKS	6/20/2019	09:45:00	USER					
Event	3	Other	Other	6/26/2019	20:30:00	USER					CREW GOT CALLED IN TO STAGE UP FOR THE JOB
Event	4	Safety Meeting	Safety Meeting	6/26/2019	23:30:00	USER					HELD JSA PRIOR LEAVING THE YARD
Event	5	Arrive at Rig	Arrive at Rig	6/27/2019	09:10:00	USER					36 MILES. DISCUSS NUMBERS AND JOB PROCEDURE WITH CUSTOMER.
Event	6	Pre-Rig Up Safety Meeting	Pre-Rig Up Safety Meeting	6/27/2019	09:40:00	USER					HELD JSA PRIOR RIG UP
Event	7	Other	RIG UP	6/27/2019	09:55:00	USER					RIG UP TOP OUT JOB
Event	8	Pre-Job Safety Meeting	Pre-Job Safety Meeting	6/27/2019	11:45:00	USER	0.90	8.40	-1.00	45.80	SAFETY MEETING WITH ALL PERSONAL INVOLVED
Event	9	Start Job	Start Job	6/27/2019	11:57:11	COM4	0.00	8.40	0.00	0.00	
Event	10	Check Weight	Check Weight	6/27/2019	12:12:58	COM4	0.00	8.40	1.00	0.00	
Event	11	Shutdown	Shutdown	6/27/2019	12:50:58	USER	0.00	8.28	3.00	28.00	TOP OUT FOR 1CH IS COMPLETE
Event	12	Pump Spacer	Pump Spacer	6/27/2019	12:51:00	USER	0.00	8.24	3.00	28.00	PUMP FRESH WATER AHEAD
Event	13	Pump Cement	Pump Cement	6/27/2019	12:54:00	USER	0.80	8.23	32.00	29.20	BATCH/ WEIGHT/ PUMP 161 SKS OF 15.8 PPG G NEAT CEMENT.

Event	14	Shutdown	Shutdown	6/27/2019	14:15:00	USER	FINISHED PUMPING CEMENT.
Event	15	Post-Job Safety Meeting (Pre Rig-Down)	Post-Job Safety Meeting (Pre Rig-Down)	6/27/2019	14:35:00	USER	RIG DOWN SAFETY MEETING

3.0 Attachments

3.1 Case 1-Custom Results (1).png



HALLIBURTON

iCem[®] Service

CONOCO/PHILLIPS COMPANY-EBUS

Date: Monday, August 19, 2019

Reserve 3-65 35-34 1CH Production

Job Date: Wednesday, July 10, 2019

Sincerely,
Tyler Hill

Legal Notice

Disclaimer:

All information in this report is provided subject to the terms and conditions which govern the services provided by Halliburton. Halliburton personnel use their best efforts in gathering information and their best judgment in interpreting it, but any interpretation, research, analysis or recommendation furnished by Halliburton are opinions based upon inferences from measurements and empirical relationships and assumptions, which inferences and empirical relationships and assumptions are not infallible, and with respect to which professionals in the industry may differ. iCem 3D Displacement results are used to understand how fluids intermix during a cement job. Simulation and 3D displacement results are not intended as and should not be used as a replacement for bond logs in determining top of cement. Current 3D model calculations are known to model more volume than the input volume for standard cases due to known calculation improvements required. For rotational cases, the modeled volume will be impacted by the same calculations impacting the standard cases, as well as additional constraints imposed to make the calculation time required operationally feasible. Therefore, until further notice, 3D displacement results should not be used for replacement of a bond log, or used as an identifier of top of cement. HALLIBURTON IS UNABLE TO GUARANTEE THE ACCURACY OF ANY CHART INTERPRETATION, RESEARCH ANALYSIS, OR JOB RECOMMENDATION and any interpretation or recommendation is not for use of or reliance upon by any third party. The customer has full responsibility for any of its decisions which are based on the information provided in this report.

Table of Contents

1.0	Cementing Job Summary	4
1.1	Executive Summary	4
2.0	Real-Time Job Summary	6
2.1	Job Event Log	6
3.0	Attachments.....	10
3.1	Reserve 3-65 35-34 1CH Production.png	10

1.0 Cementing Job Summary

1.1 Executive Summary

Halliburton appreciates the opportunity to perform the cementing services on the **Reserve 3-65 35-34 1CH** cement **Production** casing job. A pre-job safety meeting was held before the job where details of the job were discussed, potential safety hazards were reviewed, and environmental compliance procedures were outlined.

Approximately 28 bbls of spacer were returned to surface.

Halliburton maintains a continuous quality improvement process and appreciates any comments or suggestions that you may have. Halliburton again thanks you for the opportunity to perform service work on this well. We hope to be your solutions provider for future projects.

Respectfully,

Halliburton Ft. Lupton

The Road to Excellence Starts with Safety

Sold To #: 352431	Ship To #: 3958595	Quote #: 0022592682	Sales Order #: 0905822601							
Customer: CONOCO/PHILLIPS COMPANY-EBUS		Customer Rep: Aron Negusse								
Well Name: RESERVE 3-65 35-34		Well #: 1CH	AP/WMI #: 05-001-10453-00							
Field: WILDCAT	City (SAP): WATKINS	County/Parish: ADAMS	State: COLORADO							
Legal Description: NE NE-35-35-65W-860FNL-541FEL										
Contractor:		Rig/Platform Name/Num: Nabors B15								
Job BOM: 7523 7523										
Well Type: HORIZONTAL OIL										
Sales Person: HALAMERICA/HB41307		Srvc Supervisor: Prince Perez								
Job										
Formation Depth (MD)	Top 0'	Bottom	17,779'							
Job depth MD	17770ft		Job Depth TVD 7,704'							
Water Depth			Wk Ht Above Floor 5'							
Well Data										
Description	New / Used	Size In	ID In	Weight lbm/ft	Thread	Grade	Top MD ft	Bottom MD ft	Top TVD ft	Bottom TVD ft
Casing		8.625	8.921	36	STC	J-55	0	2054	0	2054
Casing		5.5	4.778	20	TXP-BTC	P-110	0	17770	0	7704
Open Hole Section			8.5				2054	17779	2054	7704
Tools and Accessories										
Type	Size In	Qty	Make	Depth ft	Type	Size In	Qty	Make		
Guide Shoe	5.5	1		17770	Top Plug	5.5	1			
Float Shoe	5.5				Bottom Plug	5.5	1			
Float Collar	5.5	1		17,681	88R plug set	5.5		HES		
Insert Float	5.5				Plug Container	5.5	1	HES		
Stage Tool	5.5				Centralizers	5.5	436			
Fluid Data										
Stage/Plug #: 1										
Fluid #	Stage Type	Fluid Name	Qty	Qty UoM	Mixing Density lbm/gal	Yield ft ³ /sack	Mix Fluid Gal	Rate bbl/mln	Total Mix Fluid Gal	
1	Spacer	SBM FDP-C1337-18 CEMENT SPACER SYS	60	bbl	10.5	6.64	42.5	5	2,156	
Fluid #	Stage Type	Fluid Name	Qty	Qty UoM	Mixing Density lbm/gal	Yield ft ³ /sack	Mix Fluid Gal	Rate bbl/mln	Total Mix Fluid Gal	
2	Lead	ELASTICEM (TM) SYSTEM	815	sack	13.2	1.57	7.54	8	6,145	

last updated on 7/10/2019 7:04:48 AM

Page 1 of 3

Cementing Job Summary

Fluid #	Stage Type	Fluid Name	Qty	Qty UoM	Mixing Density lbm/gal	Yield ft ³ /sack	Mix Fluid Gal	Rate bbl/mln	Total Mix Fluid Gal
3	Tail	ECONOCEM (TM) SYSTEM	1,510	sack	13.5	1.79	8.74	8	13,197
Fluid #	Stage Type	Fluid Name	Qty	Qty UoM	Mixing Density lbm/gal	Yield ft ³ /sack	Mix Fluid Gal	Rate bbl/mln	Total Mix Fluid Gal
4	Displacement	MMCR Displacement	20	bbl	8.34				
Fluid #	Stage Type	Fluid Name	Qty	Qty UoM	Mixing Density lbm/gal	Yield ft ³ /sack	Mix Fluid Gal	Rate bbl/mln	Total Mix Fluid Gal
5	Displacement	Fresh Water	372.5	bbl	8.33				
Cement Left in Pipe	Amount	BS ft	Reason		Shoe Joint				
Mix Water pH	7	Mix Water Chloride	~300 ppm		Mix Water Temperature	72 °F			
Cement Temperature	## °F	Plug Displaced by	8.33 lb/gal		Disp. Temperature	72 °F			
Plug Bumped?	Yes	Bump Pressure	2,463 psi		Floats Held?	Yes			
Cement Returns	0 bbl	Returns Density	## lb/gal		Returns Temperature	## °F			
<p>Comment</p> <p>Pumped 60 bbbls of Tuned Prime with 40 gallons of Dual B, and 40 gallons of Musol A.</p> <p>Pumped 227.89 bbbls of Elasticem.</p> <p>Pumped 481.39 bbbls of Econocem.</p> <p>Pumped 392.5 bbbls of fresh water displacement with 10 gallons of MMCR in the first 20 bbbls and biocide throughout.</p> <p>5 bbbls back on the floats.</p> <p>28 bbbls of spacer back to surface.</p>									

2.0 Real-Time Job Summary

2.1 Job Event Log

Type	Seq. No.	Activity	Graph Label	Date	Time	Source	DH Density <i>(ppg)</i>	Comb Pump Rate <i>(bbl/min)</i>	PS Pump Press <i>(psi)</i>	Comments
Event	1	Call Out	Call Out	7/9/2019	20:00:00	USER				CREW CALLED OUT AT 20:00, REQUESTED ON LOCATION 00:00. CREW PICKED UP CEMENT, CHEMICALS, AND PLUG CONTAINER FROM FT. LUPTON, CO. BULK 660, 10784082, AND PUMP 11189145.
Event	2	Pre-Convoy Safety Meeting	Pre-Convoy Safety Meeting	7/9/2019	22:50:00	USER				CREW DISCUSSED ROUTES, HAZARDS, AND COMMUNICATION WITH CREW.
Event	3	Crew Leave Shop	Crew Leave Shop	7/9/2019	23:00:00	USER				STARTED JOURNEY MANAGEMENT.
Event	4	Arrive at Location from Service Center	Arrive at Location from Service Center	7/10/2019	00:00:00	USER				END JOURNEY MANAGEMENT. MEET WITH CO. MAN TO DISCUSS JOB; SURFACE CASING- 9/58" 36 LB/FT @ 2,054.3', 5.5" CASING: 20 LB/FT TOTAL 17,769.6', 8 1/2" HOLE, TD 17,779', 88.3' SHOE TRAC, TVD- 7,704'. PUMP FRESH WATER DISPLACEMENT. CASING LANDED @ 22:00 7/9/2019.
Event	5	Safety Meeting - Assessment of Location	Safety Meeting - Assessment of Location	7/10/2019	00:10:00	USER				HAZARD HUNT. DISCUSSED POSSIBLE HAZARDS ASSOCIATED WITH

										LOCATION, RIG UP AND WEATHER.
Event	6	Rig-Up Equipment	Rig-Up Equipment	7/10/2019	00:20:00	USER				RIG UP BULK AND MIXING EQUIPMENT.
Event	7	Rig-Up Completed	Rig-Up Completed	7/10/2019	01:10:00	USER	8.27	0.00	0.00	
Event	8	Pre-Job Safety Meeting	Pre-Job Safety Meeting	7/10/2019	01:20:00	USER	8.28	0.00	1.00	MEETING WITH HALLIBURTON AND RIG PERSONNEL. COMMUNICATED POTENTIAL SAFETY HAZARDS AND JOB DETAILS.
Event	9	Start Job	Start Job	7/10/2019	01:49:46	COM4	3.23	0.00	-1.00	BEGIN RECORDING JOB DATA.
Event	10	Test Lines	Test Lines	7/10/2019	02:08:24	COM4	8.48	0.00	6541.00	PRESSURE TESTED IRON TO 6,500 PSI. KICKOUTS SET @ 500 PSI, KICKED OUT @ 1,100 PSI, 5TH GEAR STALL OUT @ 1,870 PSI. 6,500 PRESSURE TEST KICKED OUT @ 6,400 PSI
Event	11	Pump Spacer 1	Pump Spacer 1	7/10/2019	02:18:32	COM4	8.31	0.00	-2.00	PUMP 60 BBLS OF TUNED PRIME @ 10.5 LB/GAL, 6.64 CUFT/SK, 42.5 GALL/SK. 20 GALS D-AIR, 40 GALLONS OF DUAL B, 40 GALLONS OF MUSOL A. HOS CALCULATED @ 673.7'. 27.73 BBLS CALCULATED TO RETURN TO SURFACE. DENSITY VERIFIED BY PRESSURIZED MUD SCALES. PUMP RATE 5 BBLS/MIN @ 550 PSI.
Event	12	Pump Lead Cement	Pump Lead Cement	7/10/2019	02:30:18	COM4	10.47	6.50	383.00	PUMPED 815 SKS OF ELASTICEM @ 13.2 LB/GAL, 1.57 FT3/SK, 7.54 GAL/SK. 227.89 BBLS. HOL

CALCULATED @ 5,345.2',
TOL CALCULATED @ 673.7'.
DENSITY VERIFIED BY
PRESSURIZED MUD SCALES.
PUMP RATE 8 BBL/MIN @
390 PSI

Event	13	Check Weight	Check Weight	7/10/2019	02:40:03	COM4	13.16	8.00	364.00	
Event	14	Check Weight	Check Weight	7/10/2019	02:48:49	COM4	13.15	8.00	370.00	
Event	15	Pump Tail Cement	Pump Tail Cement	7/10/2019	03:04:16	COM4	13.44	2.80	85.00	PUMP 1,510 SKS OF ECONOCEM @ 13.5 LB/GAL, 1.79 FT3/SK, 8.74 GAL/SK, 481.39 BBL. HOT CALCULATED @ 11,750.7', TOT CALCULATED @ 6,018.9'. DENSITY VERIFIED BY PRESSURIZED MUD SCALES. PUMP RATE 8 BBL/MIN @ 410 PSI.
Event	16	Check Weight	Check Weight	7/10/2019	03:12:22	COM4	13.43	8.00	414.00	
Event	17	Shutdown	Shutdown	7/10/2019	04:10:55	COM4	13.38	0.00	59.00	SHUTDOWN TO WASH LINES.
Event	18	Drop Top Plug	Drop Top Plug	7/10/2019	04:19:56	COM4	8.08	0.00	5.00	PLUG LEFT CONTAINER, VERIFIED BY CO. MAN.
Event	19	Pump Displacement	Pump Displacement	7/10/2019	04:19:58	COM4	8.08	0.00	5.00	BEGIN CALCULATED DISPLACEMENT OF 392.52 BBL WITH FRESH WATER. MMCR IN THE FIRST 20 BBL, 20 GALLONS OF ALDACIDE, 50 LBS OF OXYGEN, AND BIOCID THROUGHOUT. PUMP RATE 8 BPM @ 2,950 PSI. CAUGHT CEMENT @ 60 BBL INTO DISPLACEMENT. SPACER TO SURFACE @ 364 BBL INTO DISPLACEMENT. 28 BBL OF TUNED PRIME

										TO SURFACE. SLOW RATE TO 3 BPM @ 370 BBLS INTO DISPLACEMENT.
Event	20	Bump Plug	Bump Plug	7/10/2019	05:14:37	COM4	8.18	0.00	3463.00	PLUG BUMPED AT CALCULATED DISPLACEMENT. 2,463 PSI PRESSURED 1,000 PSI OVER BUMP. SHUTDOWN FOR 5 MINUTES.
Event	21	Check Floats	Check Floats	7/10/2019	05:20:22	USER	8.14	0.00	558.00	RELEASED PRESSURE, FLOATS HELD, 5 BBLS BACK.
Event	22	End Job	End Job	7/10/2019	05:23:46	COM4	8.11	0.00	2.00	STOP RECORDING JOB DATA.
Event	23	Post-Job Safety Meeting (Pre Rig-Down)	Post-Job Safety Meeting (Pre Rig-Down)	7/10/2019	05:30:00	USER				DISCUSSED POSSIBLE HAZARDS ASSOCIATED WITH WEATHER, LOCATION AND RIGGING DOWN IRON AND HOSES.
Event	24	Rig-Down Equipment	Rig-Down Equipment	7/10/2019	05:40:00	USER				RIG DOWN BULK AND MIXING EQUIPMENT.
Event	25	Rig-Down Completed	Rig-Down Completed	7/10/2019	07:30:00	USER				
Event	26	Pre-Convoy Safety Meeting	Pre-Convoy Safety Meeting	7/10/2019	07:40:00	USER				CREW DISCUSSED ROUTES HAZARDS AND COMMUNICATION WITH CREW.
Event	27	Crew Leave Location	Crew Leave Location	7/10/2019	07:50:00	USER				THANK YOU FOR USING HALLIBURTON – PRINCE PEREZ AND CREW.

3.0 Attachments

3.1 Reserve 3-65 35-34 1CH Production.png

