

HALLIBURTON

iCem[®] Service

CONOCO/PHILLIPS COMPANY EBUSINESS

Ft. Lupton District, CO

For: Jason Beach

Date: Thursday, June 20, 2019

Reserve

Adams

Operator Conrad Sperosen Elite 11368474

Job Date: Thursday, June 20, 2019

Sincerely,

Steve Markovich

Legal Notice

Disclaimer:

All information in this report is provided subject to the terms and conditions which govern the services provided by Halliburton. Halliburton personnel use their best efforts in gathering information and their best judgment in interpreting it, but any interpretation, research, analysis or recommendation furnished by Halliburton are opinions based upon inferences from measurements and empirical relationships and assumptions, which inferences and empirical relationships and assumptions are not infallible, and with respect to which professionals in the industry may differ. iCem 3D Displacement results are used to understand how fluids intermix during a cement job. Simulation and 3D displacement results are not intended as and should not be used as a replacement for bond logs in determining top of cement. Current 3D model calculations are known to model more volume than the input volume for standard cases due to known calculation improvements required. For rotational cases, the modeled volume will be impacted by the same calculations impacting the standard cases, as well as additional constraints imposed to make the calculation time required operationally feasible. Therefore, until further notice, 3D displacement results should not be used for replacement of a bond log, or used as an identifier of top of cement. HALLIBURTON IS UNABLE TO GUARANTEE THE ACCURACY OF ANY CHART INTERPRETATION, RESEARCH ANALYSIS, OR JOB RECOMMENDATION and any interpretation or recommendation is not for use of or reliance upon by any third party. The customer has full responsibility for any of its decisions which are based on the information provided in this report.

Table of Contents

1.0 Cementing Job Summary 4

 1.1 Executive Summary and Lab Report4

2.0 Real-Time Job Summary 9

 2.1 Job Event Log9

3.0 Attachments..... 11

 3.1 Reserve 3-65 35-34 2AH Surface – Job Chart11

1.0 Cementing Job Summary

1.1 Executive Summary

Halliburton appreciates the opportunity to perform the cementing services on the **Reserve 3-65 35-34 2H** cement **Surface** casing job. A pre-job safety meeting was held before the job where details of the job were discussed, potential safety hazards were reviewed, and environmental compliance procedures were outlined.

Approximately 190 bbls of cement were returned to surface.

Halliburton maintains a continuous quality improvement process and appreciates any comments or suggestions that you may have. Halliburton again thanks you for the opportunity to perform service work on this well. We hope to be your solutions provider for future projects.

Respectfully,

Halliburton Fort Lupton

The Road to Excellence Starts with Safety

Sold To #: 352431		Ship To #: 0003958684		Quote #: 0022592683		Sales Order #: 0905770374					
Customer: CONOCO/PHILLIPS COMPANY-EBUS				Customer Rep: Jason Beach							
Well Name: RESERVE 3-65 35-34			Well #: 2AH		API/UWI #: 05-001-10454-00						
Field: WILDCAT		City (SAP): WATKINS		County/Parish: ADAMS		State: COLORADO					
Legal Description: NE NE-35-3S-65W-910FNL-541FEL											
Contractor:				Rig/Platform Name/Num: Nabors B16							
Job BOM: 7521 7521											
Well Type: HORIZONTAL OIL											
Sales Person: HALAMERICA/HB41307				Srv Supervisor: Steven Markovich							
Job											
Formation Name											
Formation Depth (MD)		Top				Bottom					
Form Type						BHST					
Job depth MD		2058ft				Job Depth TVD					
Water Depth						Wk Ht Above Floor					
Perforation Depth (MD)		From				To					
Well Data											
Description	New / Used	Size in	ID in	Weight lbm/ft	Thread	Grade	Top MD ft	Bottom MD ft	Top TVD ft	Bottom TVD ft	
Casing		16	15.25				0	100			
Casing		9.625	8.921	36	STC	J-55	0	2058		0	
Open Hole Section			13.5				100	2069		0	
Tools and Accessories											
Type	Size in	Qty	Make	Depth ft		Type	Size in	Qty	Make		
Guide Shoe	9.625			2058		Top Plug	9.625		HES		
Float Shoe	9.625					Bottom Plug	9.625		HES		
Float Collar	9.625					SSR plug set	9.625		HES		
Insert Float	9.625					Plug Container	9.625		HES		
Stage Tool	9.625					Centralizers	9.625		HES		
Fluid Data											
Stage/Plug #: 1											
Fluid #	Stage Type	Fluid Name			Qty	Qty UoM	Mixing Density lbm/gal	Yield ft³/sack	Mix Fluid Gal	Rate bbl/min	Total Mix Fluid Gal
1	Tuned Prime Cement Spacer	SBM FDP-C1337-18 CEMENT SPACER SYS			50	bbl	10	13.05			

Fluid #	Stage Type	Fluid Name	Qty	Qty UoM	Mixing Density lbm/gal	Yield ft3/sack	Mix Fluid Gal	Rate bbl/min	Total Mix Fluid Gal	
2	SwiftCem	SWIFTCCEM (TM) SYSTEM	823	sack	12.5	2.16		6	12.32	
Fluid #	Stage Type	Fluid Name	Qty	Qty UoM	Mixing Density lbm/gal	Yield ft3/sack	Mix Fluid Gal	Rate bbl/min	Total Mix Fluid Gal	
3	SwiftCem	SWIFTCCEM (TM) SYSTEM	292	sack	13.5	1.74		6	9.2	
Fluid #	Stage Type	Fluid Name	Qty	Qty UoM	Mixing Density lbm/gal	Yield ft3/sack	Mix Fluid Gal	Rate bbl/min	Total Mix Fluid Gal	
4	Displacement	Displacement	155	bbl	8.33			6		
Cement Left In Pipe		Amount	42 ft		Reason			Shoe Joint		
Mix Water:		pH 06	Mix Water Chloride:			00 ppm		Mix Water Temperature:		71 °F °C
Comment Spacer to surface 5bbls into Tail Cement. Cement to surface at 55bbls into Tail Cement, bringing 190bbls to surface. Bumped plug at 155bbls away, final lift pressure was 634psi. During the 30 min casing test pressure went from 1800psi to 1897psi. Estimated Top of Tail Cement 1457'										

HALLIBURTON

Rockies, Brighton

Lab Results- Lead

Job Information

Request/Slurry	2563750/1	Rig Name	Nabors B16	Date	16/JUN/2019
Submitted By	Meghan Jacobs	Job Type	Surface Casing	Bulk Plant	Brighton
Customer	ConocoPhillips	Location		Well	Reserve 3-65 35-34 2AH

Well Information

Casing/Liner Size	9.625 in	Depth MD	2053 ft	BHST	35°C / 95°F
Hole Size	13.5 in	Depth TVD	2053 ft	BHCT	34°C / 93°F
Pressure	1229 psi				

Cement Information - Lead Design

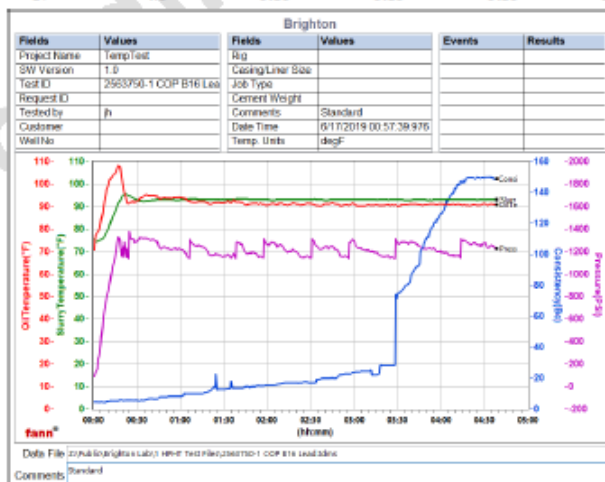
Conc	UOM	Cement/Additive	MP	Sample Type	Sample Date	Lot No.	Cement Properties		
100	% BWOC	Cemex Type I-II		Bulk Blend	16.06.19		Slurry Density	12.5	lbm/gal
12.32	gal/sack	Field (Fresh) Water		Chemicals	03.05.19	COP water	Slurry Yield	2.16	ft3/sack
2	% BWOC	Cal-Seal 60	PB	Bulk Blend	16.06.19		Water Requirement	12.32	gal/sack
1.25	% BWOC	Econolite (Powder - PB)	PB	Bulk Blend	16.06.19		Total Mix Fluid	12.32	gal/sack
0.2	% BWOC	VERSASET (PB)	PB	Bulk Blend	16.06.19		Water Source	Field (Fresh)	
2	lb/sk	Mountain Enhancer 923	PB	Bulk Blend	16.06.19		Water Chloride	Water	

Operation Test Results Request ID 2563750/1

Thickening Time, Request Test ID:36587698

17/JUN/2019

Temp (degF)	Pressure (psi)	Reached in (min)	Start BC	30 Bc (hh:mm)	40 Bc (hh:mm)	50 Bc (hh:mm)	70 Bc (hh:mm)	100 Bc (hh:mm)
93	1229	17	4.8	3:28	3:28	3:28	3:28	3:45



These are draft results and have not been approved for final use.

This report is the property of Halliburton Energy Services and neither it nor any part thereof, nor a copy thereof, is to be published or disclosed without first securing the expressed written approval of Halliburton. It may however be used in the course of regular business operations by any person or concern receiving such report from Halliburton. This report is for information purposes only and the content is limited to the sample described. Halliburton makes no warranties, expressed or implied, as to the accuracy of the contents or results. Any user of this report agrees Halliburton shall not be liable for any loss or damage regardless of cause, including any act or omission of Halliburton, resulting from the use hereof.

HALLIBURTON

Rockies, Brighton

Lab Results- Tail

Job Information

Request/Slurry	2563751/1	Rig Name	Nabors B16	Date	16/JUN/2019
Submitted By	Meghan Jacobs	Job Type	Surface Casing	Bulk Plant	Brighton
Customer	ConocoPhillips	Location	Weld	Well	Reserve 3-65 35-34 2AH

Well Information

Casing/Liner Size	9.625 in	Depth MD	2053 ft	BHST	35°C / 95°F
Hole Size	13.5 in	Depth TVD	2053 ft	BHCT	34°C / 93°F
Pressure	1229 psi				

Cement Information - Tail Design

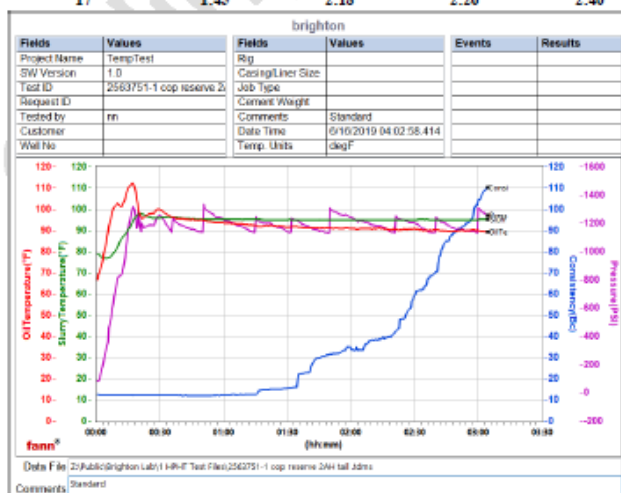
Conc	UOM	Cement/Additive	MP	Sample Type	Sample Date	Lot No.	Cement Properties		
100	% BWOC	Cemex Type I-II		Bulk Blend	16.06.19		Slurry Density	13.5	lbm/gal
9.2	gal/sack	Fresh Water		Chemicals	09.04.13		Slurry Yield	1.74	ft ³ /sack
2	% BWOC	Cal-Seal 60	PB	Bulk Blend	16.06.19		Water Requirement	9.2	gal/sack
1.25	% BWOC	Econolite (Powder - PB)	PB	Bulk Blend	16.06.19		Total Mix Fluid	9.2	gal/sack
0.2	% BWOC	VERSASET (PB)	PB	Bulk Blend	16.06.19		Water Source	Fresh Water	
2	lb/sk	Mountain Enhancer 923	PB	Bulk Blend	16.06.19		Water Chloride		

Operation Test Results Request ID 2563751/1

Thickening Time - ON-OFF-ON, Request Test ID:36585429

16/JUN/2019

Test Temp (degF)	Pressure (psi)	Reached in (min)	30 Bc (hh:mm)	50 Bc (hh:mm)	70 Bc (hh:mm)	100 Bc (hh:mm)	Start Bc
95	1229	17	1:45	2:18	2:26	2:40	12



These are draft results and have not been approved for final use.

This report is the property of Halliburton Energy Services and neither it nor any part thereof, nor a copy thereof, is to be published or disclosed without first securing the expressed written approval of Halliburton. It may however be used in the course of regular business operations by any person or concern receiving such report from Halliburton. This report is for information purposes only and the content is limited to the sample described. Halliburton makes no warranties, expressed or implied, as to the accuracy of the contents or results. Any user of this report agrees Halliburton shall not be liable for any loss or damage regardless of cause, including any act or omission of Halliburton, resulting from the use hereof.

2.0 Real-Time Job Summary

2.1 Job Event Log

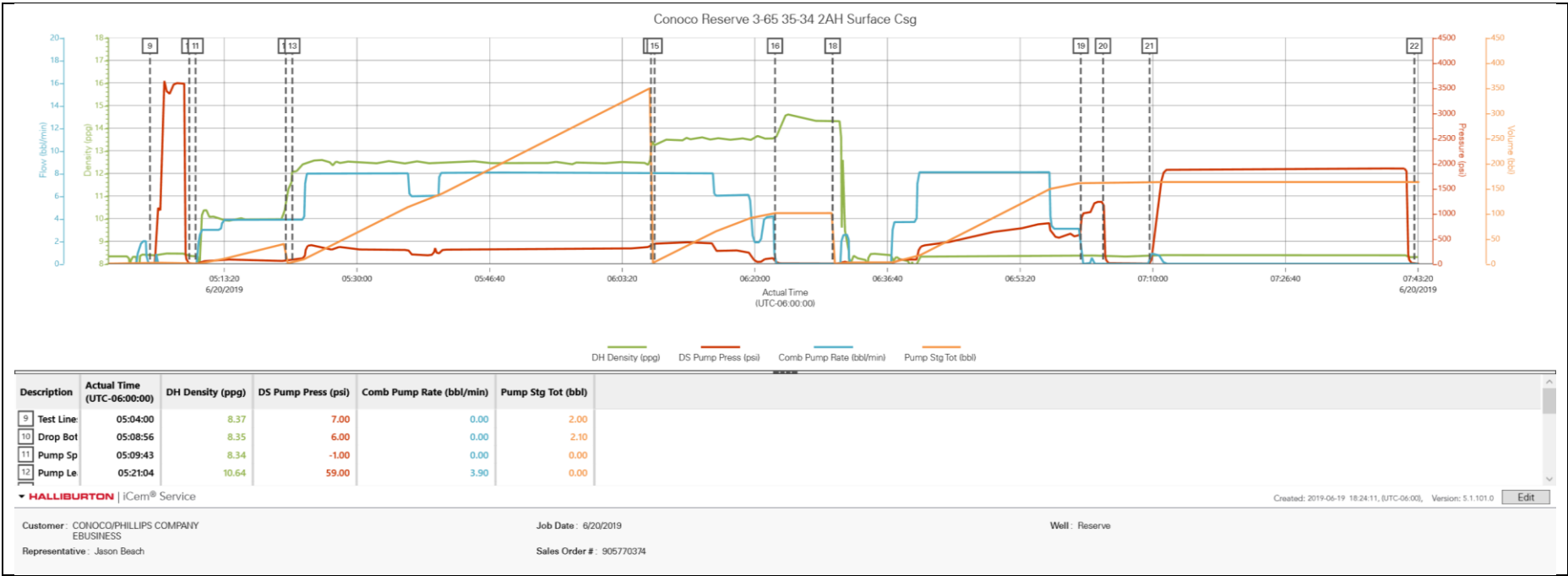
Type	Seq. No.	Activity	Graph Label	Date	Time	Source	DH Density (ppg)	DS Pump Press (psi)	Comb Pump Rate (bbl/min)	Comments
Event	1	Check Floats	Call Out	6/19/2019	12:00:00	USER				Job called out with an on location time of 1830.
Event	2	Crew Leave Yard	Crew Leave Yard	6/19/2019	16:00:00	USER				Crew left previous location to head to next location.
Event	3	Arrive at Location from Service Center	Arrive at Location from Service Center	6/19/2019	17:00:00	USER				Arrived on location, rig still running casing. 20 stands to run.
Event	4	Assessment Of Location Safety Meeting	Assessment Of Location Safety Meeting	6/19/2019	17:20:00	USER				JSA and Hazard hunt with HES crew.
Event	5	Wait on HES Materials to Arrive - Start Time	Wait on HES Materials to Arrive - Start Time	6/19/2019	20:45:00	USER	8.33	7.00	0.00	
Event	6	Wait on HES Materials to Arrive - End Time	Wait on HES Materials to Arrive - End Time	6/20/2019	04:15:00	USER	8.33	-9.00	0.00	
Event	7	Safety Meeting	Safety Meeting	6/20/2019	04:20:00	USER	8.33	-8.00	0.00	JSA with HES and rig crew on job safety and procedure.
Event	8	Start Job	Start Job	6/20/2019	04:29:45	COM4	8.33	-9.00	0.00	TD 2069' TP 2058' FC 2016' 9 5/8" 36# Surface Casing, 13 1/2" Open Hole.
Event	9	Test Lines	Test Lines	6/20/2019	05:04:00	COM4	8.37	7.00	0.00	Set kick outs to 500psi and check low pressure kick outs. Increase pressure to 3500psi and hold.
Event	10	Drop Bottom Plug	Drop Bottom Plug	6/20/2019	05:08:56	COM4	8.35	6.00	0.00	Plus pre-loaded into HES head. Plugs loaded and dropped in front of company rep.
Event	11	Pump Spacer 1	Pump Spacer 1	6/20/2019	05:09:43	COM4	8.34	-1.00	0.00	Pump 50bbls of 10ppg 13.05yield Spacer. Pumped at 3bbl/min 58psi.
Event	12	Pump Lead Cement	Pump Lead Cement	6/20/2019	05:21:04	COM4	10.64	59.00	3.90	Pump 316bbls of 12.5ppg 2.16yield Lead Cement. Pumped at 8bbl/min 340psi.
Event	13	Check Weight	Check Weight	6/20/2019	05:21:53	COM4	12.19	84.00	3.90	Weight verified by pressurized scales.
Event	14	Pump Tail Cement	Pump Tail Cement	6/20/2019	06:06:57	COM4	13.08	372.00	8.00	Pump 90bbls of 13.5ppg 1.74yield Tail Cement. Pumped at 8bbl/min 275psi. Spacer to surface at 5bbls away,

cement to surface at 55bbbls away bringing 190bbbls of cement to surface.

Event	15	Check Weight	Check Weight	6/20/2019	06:07:24	COM4	13.20	396.00	8.00	Weight verified by pressurized scales.
Event	16	Shutdown	Shutdown	6/20/2019	06:22:32	COM4	13.71	63.00	0.00	Shutdown and get ready to wash on top of plug.
Event	17	Drop Top Plug	Drop Top Plug	6/20/2019	06:29:45	COM4	14.31	6.00	0.00	Plus pre-loaded into HES head. Plugs loaded and dropped in front of company rep.
Event	18	Pump Displacement	Pump Displacement	6/20/2019	06:29:47	COM4	14.30	6.00	0.00	Pump 155bbbls of H2O. Pumped at 8bbl/min and slowed rate to 3bbl a min at 135bbbls away.
Event	19	Bump Plug	Bump Plug	6/20/2019	07:00:57	COM4	8.34	725.00	3.10	Bumped plug at 155bbbls away. Final lift pressure was 634psi. Increased pressure 500psi over and held.
Event	20	Check Floats	Check Floats	6/20/2019	07:03:45	USER	8.36	1234.00	0.00	Opened release line to check floats. After 1bbl back floats held.
Event	21	Pressure Up Well	Pressure Up Well	6/20/2019	07:09:36	COM4	8.33	2.00	0.00	Kicked in pumps to bring pressure up to 1800psi for 30 min casing test. After the 30 mins pressure was 1897psi.
Event	22	End Job	End Job	6/20/2019	07:42:52	COM4	8.30	3.00	0.00	Thank you Steve Markovich and crew.

3.0 Attachments

3.1 Reserve 3-65 35-34 2AH Surface – Job Chart



HALLIBURTON

iCem[®] Service

CONOCO/PHILLIPS COMPANY EBUSINESS

Date: Friday, July 05, 2019

Reserve 3-65 35-34 2AH Production

Sincerely,

Tyler Hill

Legal Notice

Disclaimer:

All information in this report is provided subject to the terms and conditions which govern the services provided by Halliburton. Halliburton personnel use their best efforts in gathering information and their best judgment in interpreting it, but any interpretation, research, analysis or recommendation furnished by Halliburton are opinions based upon inferences from measurements and empirical relationships and assumptions, which inferences and empirical relationships and assumptions are not infallible, and with respect to which professionals in the industry may differ. iCem 3D Displacement results are used to understand how fluids intermix during a cement job. Simulation and 3D displacement results are not intended as and should not be used as a replacement for bond logs in determining top of cement. Current 3D model calculations are known to model more volume than the input volume for standard cases due to known calculation improvements required. For rotational cases, the modeled volume will be impacted by the same calculations impacting the standard cases, as well as additional constraints imposed to make the calculation time required operationally feasible. Therefore, until further notice, 3D displacement results should not be used for replacement of a bond log, or used as an identifier of top of cement. HALLIBURTON IS UNABLE TO GUARANTEE THE ACCURACY OF ANY CHART INTERPRETATION, RESEARCH ANALYSIS, OR JOB RECOMMENDATION and any interpretation or recommendation is not for use of or reliance upon by any third party. The customer has full responsibility for any of its decisions which are based on the information provided in this report.

Table of Contents

1.0 Cementing Job Summary 4

 1.1 Executive Summary4

2.0 Real-Time Job Summary 9

 2.1 Job Event Log9

3.0 Attachments..... 12

 3.1 Reserve 3-65 35-34 2AH Production.png12

1.0 Cementing Job Summary

1.1 Executive Summary

Halliburton appreciates the opportunity to perform the cementing services on the **Reserve 3-65 35-34 2AH** cement **Production** casing job. A pre-job safety meeting was held before the job where details of the job were discussed, potential safety hazards were reviewed, and environmental compliance procedures were outlined.

Approximately 32 bbls of spacer were returned to surface.

Halliburton maintains a continuous quality improvement process and appreciates any comments or suggestions that you may have. Halliburton again thanks you for the opportunity to perform service work on this well. We hope to be your solutions provider for future projects.

Respectfully,

Halliburton Ft. Lupton

The Road to Excellence Starts with Safety

Sold To #: 352431		Ship To #: 3958684		Quote #: 0022592684		Sales Order #: 0905785505					
Customer: CONOCO/PHILLIPS COMPANY-EBUS				Customer Rep: JASON BEACH							
Well Name: RESERVE 3-65 35-34			Well #: 2AH		API/UWI #: 05-001-10454-00						
Field: WILDCAT		City (SAP): WATKINS		County/Parish: ADAMS		State: COLORADO					
Legal Description: NE NE-35-3S-65W-910FNL-541FEL											
Contractor:				Rig/Platform Name/Num: Nabors B16							
Job BOM: 7523 7523											
Well Type: HORIZONTAL OIL											
Sales Person: HALAMERICA\HB41307				Srv Supervisor: Vitali Neverdasov							
Job											
Formation Name											
Formation Depth (MD)		Top		Bottom							
Form Type					BHST						
Job depth MD		17712ft			Job Depth TVD		7828				
Water Depth					Wk Ht Above Floor						
Perforation Depth (MD)		From		To							
Well Data											
Description	New / Used	Size in	ID in	Weight lbm/ft	Thread	Grade	Top MD ft	Bottom MD ft	Top TVD ft	Bottom TVD ft	
Casing		9.625	8.921	36	STC	J-55	0	2058	0	2058	
Casing	0	5.5	4.778	20	TXP-BTC	P-110	0	17712	0	7828	
Open Hole Section			8.5				2058	17727	2058	7828	
Tools and Accessories											
Type	Size in	Qty	Make	Depth ft		Type	Size in	Qty	Make		
Guide Shoe	5.5					Top Plug	5.5	1	INOVEX		
Float Shoe	5.5	1	N/A	17712		Bottom Plug	5.5	1	INOVEX		
Float Collar	5.5	1	N/A	17625		SSR plug set	5.5				
Insert Float	5.5					Plug Container	5.5	1	HES		
Stage Tool	5.5					Centralizers	5.5	412	HES		
Fluid Data											
Stage/Plug #: 1											
Fluid #	Stage Type	Fluid Name			Qty	Qty UoM	Mixing Density lbm/gal	Yield ft³/sack	Mix Fluid Gal	Rate bbl/min	Total Mix Fluid Gal
1	Tuned Prime Cement Spacer	SBM FDP-C1337-18 CEMENT SPACER SYS			60	bbl	10.5	6.64		5	

84.55 lbm/bbl	BARITE, BULK (100003681)								
0.10 gal/bbl	D-AIR 3000L, 5 GAL PAIL (101007444)								
0.75 gal/bbl	MUSOL(R) A, 5 GAL PAIL (100064220)								
0.75 gal/bbl	DUAL SPACER SURFACTANT B, 5 GAL PAIL (100003665)								
1 lbm/bbl	FE-2 (100001615)								
Fluid #	Stage Type	Fluid Name	Qty	Qty UoM	Mixing Density lbm/gal	Yield ft3/sack	Mix Fluid Gal	Rate bbl/min	Total Mix Fluid Gal
2	ElastiCem	ELASTICEM (TM) SYSTEM	835	sack	13.2	1.57		7	7.55
24.50 lbm	POZMIX A FLYASH (100003690)								
61.10 lbm	TYPE I / II CEMENT, BULK (101439798)								
0.10 %	SA-1015, 50 LB SACK (102077046)								
7.55 Gal	FRESH WATER								
Fluid #	Stage Type	Fluid Name	Qty	Qty UoM	Mixing Density lbm/gal	Yield ft3/sack	Mix Fluid Gal	Rate bbl/min	Total Mix Fluid Gal
3	EconoCem	ECONOCEM (TM) SYSTEM	1500	sack	13.5	1.79		6.8	8.74
0.10 %	SA-1015, 50 LB SACK (102077046)								
61.10 lbm	TYPE I / II CEMENT, BULK (101439798)								
8.72 Gal	FRESH WATER								
24.50 lbm	POZMIX A FLYASH (100003690)								
Fluid #	Stage Type	Fluid Name	Qty	Qty UoM	Mixing Density lbm/gal	Yield ft3/sack	Mix Fluid Gal	Rate bbl/min	Total Mix Fluid Gal
4	MMCR Displacement	MMCR Displacement	20	bbl	8.34			8	
0.50 gal/bbl	MICRO MATRIX CEMENT RETARDER, 5 GAL PAIL (100003781)								
Fluid #	Stage Type	Fluid Name	Qty	Qty UoM	Mixing Density lbm/gal	Yield ft3/sack	Mix Fluid Gal	Rate bbl/min	Total Mix Fluid Gal
5	Water	Water	373	bbl	8.33			8	
Cement Left In Pipe	Amount	87 ft			Reason			Shoe Joint	
Comment: 32 BBSL OF SPACER BACK TO SURFACE. ESTIMATED TOP OF LEAD @ 532' . TOP OF TAIL @ 5991'									

HALLIBURTON

Rockies, Brighton

Lab Results- Lead**Job Information**

Request/Slurry	2564844/1	Rig Name	Nabors B16	Date	20/JUN/2019
Submitted By	Tyler Hill	Job Type	Production Casing	Bulk Plant	Brighton
Customer	ConocoPhillips	Location	Weld	Well	Reserve 3-65 35-34 2AH

Well Information

Casing/Liner Size	5.5 in	Depth MD	17837 ft	BHST	104°C / 219°F
Hole Size	8.5 in	Depth TVD	7767 ft	BHCT	104°C / 219°F
Pressure	4407 psi				

Cement Information - Lead Design

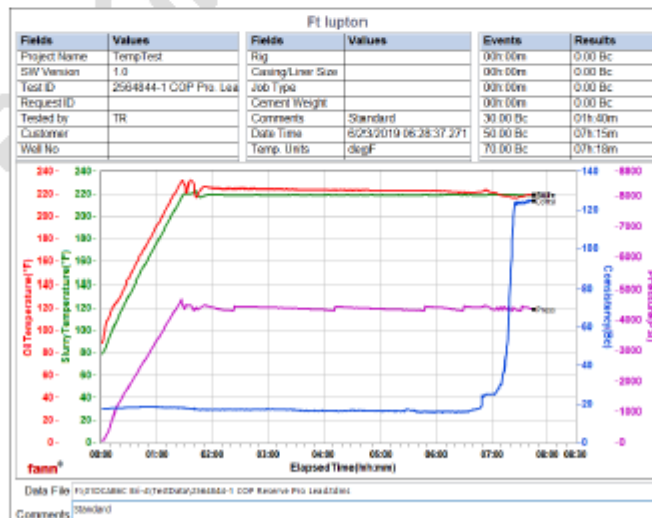
Conc	UOM	Cement/Additive	MP	Sample Type	Sample Date	Lot No.	Cement Properties		
100	% BWOC	Cement Blend					Slurry Density	13.2	lbm/gal
7.54	gal/sack	Field (Fresh) Water		Chemicals	03.05.19	COP water	Slurry Yield	1.57	ft ³ /sack
5	lb/sk	WellLife 708 (PB)	PB	Bulk Blend	23.06.19		Water Requirement	7.54	gal/sack
0.1	% BWOC	SA-1015 (PB)	PB	Bulk Blend	23.06.19		Total Mix Fluid	7.54	gal/sack
0.3	% BWOC	SCR-100 (PB)	PB	Bulk Blend	23.06.19				
1	lb/sk	Silicalite - Compacted	PB	Bulk Blend	23.06.19		Water Source	Field (Fresh)	
0.2	% BWOC	HALAD-344 (PB)	PB	Bulk Blend	23.06.19		Water Chloride	Water	

Operation Test Results Request ID 2564844/1

Thickening Time - ON-OFF-ON, Request Test ID:36599721

23/JUN/2019

Test Temp (degF)	Pressure (psi)	Reached in (min)	30 Bc (hh:mm)	50 Bc (hh:mm)	70 Bc (hh:mm)	100 Bc (hh:mm)	Start Bc	Stirring before stop (mins)	Static Period (min)	Peak reading (BC)
219	4407	87	6:11	7:15	7:18	7:20	17.6	90	10	18



These are draft results and have not been approved for final use.

This report is the property of Halliburton Energy Services and neither it nor any part thereof, nor a copy thereof, is to be published or disclosed without first securing the expressed written approval of Halliburton. It may however be used in the course of regular business operations by any person or concern receiving such report from Halliburton. This report is for information purposes only and the content is limited to the sample described. Halliburton makes no warranties, expressed or implied, as to the accuracy of the contents or results. Any user of this report agrees Halliburton shall not be liable for any loss or damage regardless of cause, including any act or omission of Halliburton, resulting from the use hereof.

HALLIBURTON

Rockies, Brighton

Lab Results- Tail

Job Information

Request/Slurry	2564845/1	Rig Name	Nabors B16	Date	20/JUN/2019
Submitted By	Tyler Hill	Job Type	Production Casing	Bulk Plant	Brighton
Customer	ConocoPhillips	Location	Weld	Well	Reserve 3-65 35-34 2AH

Well Information

Casing/Liner Size	5.5 in	Depth MD	17837 ft	BHST	104°C / 219°F
Hole Size	8.5 in	Depth TVD	7767 ft	BHCT	104°C / 219°F
Pressure	4407 psi				

Cement Information - Tail Design

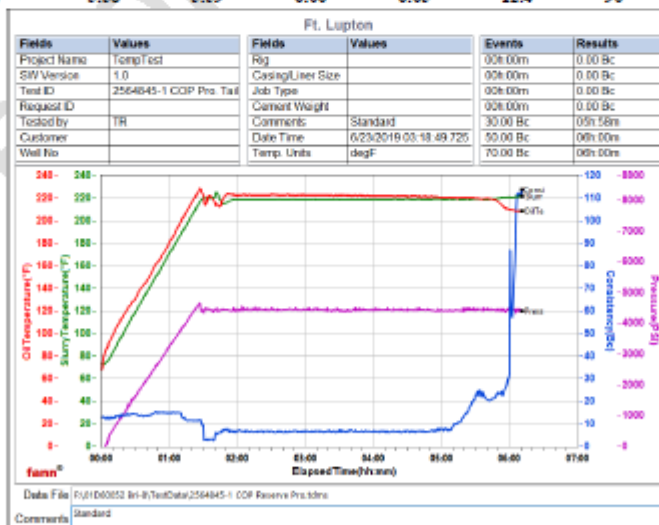
Conc	UOM	Cement/Additive	MP	Sample Type	Sample Date	Lot No.	Cement Properties		
100	% BWOC	Cement Blend					Slurry Density	13.5	lbm/gal
8.73	gal/sack	Field (Fresh) Water		Chemicals	03.05.19	COP water	Slurry Yield	1.79	ft ³ /sack
25	% BWOC	SS-200 silica flour	PB	Bulk Blend	23.06.19		Water Requirement	8.73	gal/sack
0.1	% BWOC	SA-1015 (PB)	PB	Bulk Blend	23.06.19		Total Mix Fluid	8.73	gal/sack
0.25	% BWOC	HR-5 (PB)	PB	Bulk Blend	23.06.19				
0.8	% BWOC	HALAD-344 (PB)	PB	Bulk Blend	23.06.19		Water Source	Field (Fresh)	
0.2	% BWOC	HALAD-413 (PB)	PB	Bulk Blend	23.06.19		Water Chloride	Water	

Operation Test Results Request ID 2564845/1

Thickening Time - ON-OFF-ON, Request Test ID:36599724

23/JUN/2019

Test Temp (degF)	Pressure (psi)	Reached in (min)	30 Bc (hh:mm)	50 Bc (hh:mm)	70 Bc (hh:mm)	100 Bc (hh:mm)	Start Bc	Stirring before stop (mins)	Static Period (min)	Peak reading (BC)
219	4407	87	5:58	5:59	6:00	6:05	12.4	90	10	8



These are draft results and have not been approved for final use.

This report is the property of Halliburton Energy Services and neither it nor any part thereof, nor a copy thereof, is to be published or disclosed without first securing the expressed written approval of Halliburton. It may however be used in the course of regular business operations by any person or concern receiving such report from Halliburton. This report is for information purposes only and the content is limited to the sample described. Halliburton makes no warranties, expressed or implied, as to the accuracy of the contents or results. Any user of this report agrees Halliburton shall not be liable for any loss or damage regardless of cause, including any act or omission of Halliburton, resulting from the use hereof.

2.0 Real-Time Job Summary

2.1 Job Event Log

Type	Seq. No.	Activity	Graph Label	Date	Time	Source	DS Pump Press (psi)	DH Density (ppg)	Comb Pump Rate (bbl/min)	Comments
Event	1	Safety Meeting	Safety Meeting	6/27/2019	15:15:00	USER				PRE-JOB RIG UP SAFETY MEETING HELD TO DISCUSS HAZARDS AND ASSIGN TASKS, CREW AND EQUIPMENT WERE ALREADY ON LOCATION AFTER PUMPING TOPOUT JOBS ON PREVIOUS WELLS ON PAD
Event	2	Comment	Comment	6/27/2019	15:20:00	USER				TD-17,727, TP-17,712 5.5" 20# P110, FC-17,625.5, TVD-7,828, PC-2,058 9.625" 36# J55, OH-8.5", MW-9.5PPG
Event	3	Rig-Up Equipment	Rig-Up Equipment	6/27/2019	15:25:00	USER				SPOT TRUCKS AND RIG-UP EQUIPMENT
Event	4	Casing on Bottom	Casing on Bottom	6/27/2019	16:00:00	USER				CASING LANDED, RIG BEGAN CIRCULATING
Event	5	Safety Meeting	Safety Meeting	6/27/2019	18:19:00	USER				SAFETY MEETING WITH ALL PERSONNEL ON LOCATION TO DISCUSS HAZARDS AND JOB PROCEDURE
Event	6	Check Floats	Start Job	6/27/2019	18:39:12	COM4	7.00	7.93	0.00	BEGIN RECORDING JOB DATA
Event	7	Check Weight	Check Weight	6/27/2019	18:39:43	COM4	6.00	7.93	0.00	VERIFY DENSITY WITH PRESSURIZED MUD SCALE
Event	8	Pressure Test	Pressure Test	6/27/2019	19:08:39	USER	14.00	8.60	0.00	PRESSURE TEST LINES TO 5945 PSI. PRESSURE TEST SUCCESSFUL.

Event	9	Pump Spacer	Pump Spacer	6/27/2019	19:14:15	USER	8.00	8.30	0.00	PUMP 60 BBLS TUNED PRIME SPACER AT 10.5PPG WITH MUSOL A AND DUAL B SURFACTANTS (6.64 FT3/SK YIELD, 42.3 GAL/SK), TOP OF SPACER AT SURFACE
Event	10	Pump Lead Cement	Pump Lead Cement	6/27/2019	19:29:23	USER	238.00	12.06	4.50	PUMP 233.5 BBLS OF ELASTICEM LEAD CEMENT (865 SACKS, 1.57 FT3/SK, 7.55 GAL/SK) AT 13.2PPG, TOP OF LEAD ESTIMATED AT 534'
Event	11	Check Weight	Check Weight	6/27/2019	19:29:41	COM4	273.00	12.52	4.50	VERIFY DENSITY WITH PRESSURIZED MUD SCALE
Event	12	Pump Tail Cement	Pump Tail Cement	6/27/2019	20:07:22	USER	214.00	13.30	4.90	PUMP 478.2 BBLS OF ECONOCEM TAIL CEMENT (1500 SACKS, 1.79 FT3/SK, 8.74 GAL/SK) AT 13.5PPG, TOP OF TAIL ESTIMATED AT 5,991'
Event	13	Check Weight	Check Weight	6/27/2019	20:07:40	COM4	223.00	13.37	4.90	VERIFY DENSITY WITH PRESSURIZED MUD SCALE
Event	14	Check Weight	Check Weight	6/27/2019	20:41:36	COM4	325.00	13.48	5.70	VERIFY DENSITY WITH PRESSURIZED MUD SCALE
Event	15	Clean Lines	Clean Lines	6/27/2019	21:31:43	USER	17.00	14.47	0.00	SHUTDOWN, WASH PUMPS AND LINES BEFORE STARTING DISPLACEMENT
Event	16	Pump Displacement	Pump Displacement	6/27/2019	21:42:45	USER	24.00	8.15	0.00	PUMP 391 BBLS FRESH WATER DISPLACEMENT, MMCR IN FIRST 20 BBLS, ALDACIDE AND AN OXYGEN SCAVENGER THROUGHOUT REMAINDER
Event	17	Slow Rate	Slow Rate	6/27/2019	22:36:43	USER	2458.00	8.20	2.80	SLOW RATE PRIOR TO BUMP

Event	18	Bump Plug	Bump Plug	6/27/2019	22:38:38	USER	2482.00	8.20	2.90	BUMP PLUG AT 2360 PSI ON CALCULATED DISPLACEMENT, BROUGHT UP TO 3450 PSI TO ENSURE SEAT. HELD PRESSURE ON CASING FOR 5 MINUTES PER COMPANY MAN, FULL RETURNS DURING THE JOB, 34 BBLS OF SPACER BROUGHT TO SURFACE
Event	19	Check Floats	Check Floats	6/27/2019	22:45:34	USER	3213.00	8.19	0.00	FLOATS HELD, 4.5 BBLS BACK TO THE TRUCK
Event	20	End Job	End Job	6/27/2019	22:47:41	COM4	38.00	8.15	0.00	END JOB RECORDING
Event	21	Safety Meeting	Safety Meeting	6/27/2019	22:55:05	USER	28.00	8.14	0.00	POST-JOB RIG DOWN SAFETY MEETING HELD TO DISCUSS HAZARDS AND ASSIGN TASKS

3.0 Attachments

3.1 Reserve 3-65 35-34 2AH Production.png

