

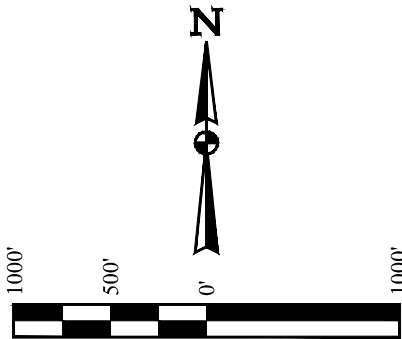
T3S, R65W, 6th P.M.

ConocoPhillips Company

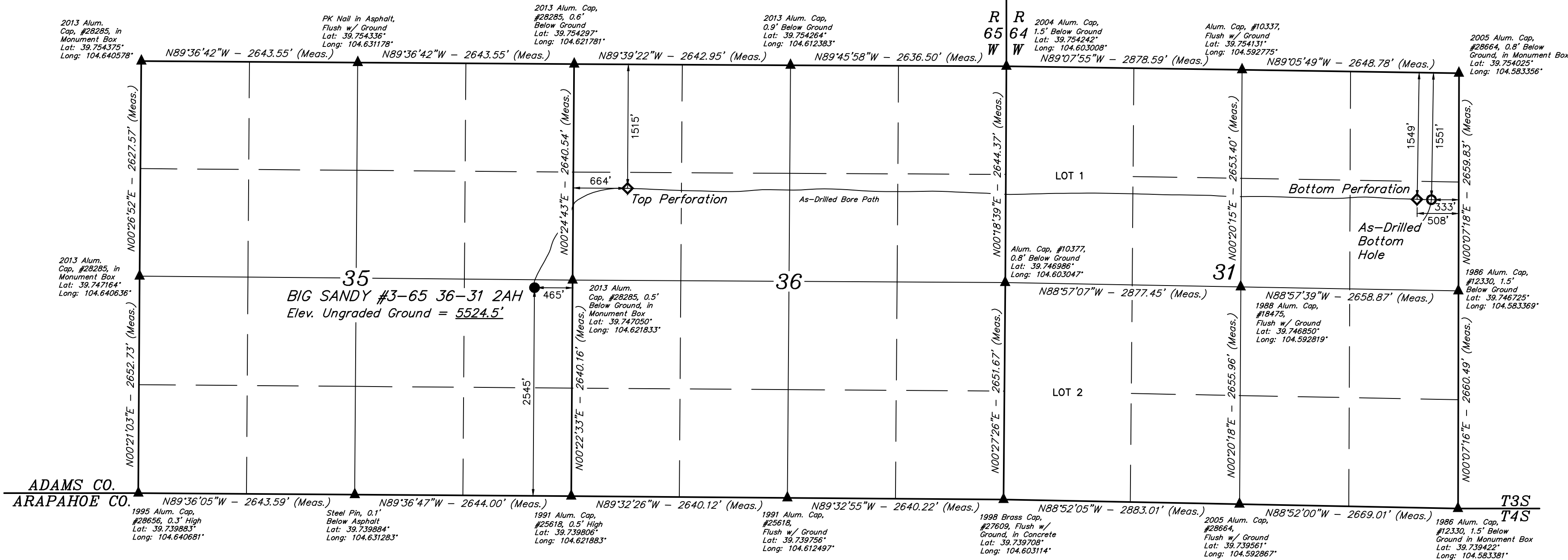
BIG SANDY #3-65 36-31 2AH
NE 1/4 SE 1/4, SECTION 35, T3S, R65W, 6th P.M.
ADAMS COUNTY, COLORADO

BASIS OF BEARINGS
BASIS OF ELEVATION

BENCHMARK 374 LOCATED ON THE SECTION LINE BETWEEN
SECTIONS 12 & 13, T5S, R64W, 6th P.M., TAKEN FROM 1988
PUBLISHED DATUM BY THE UNITED STATES DEPARTMENT OF
THE INTERIOR, GEOLOGICAL SURVEY AS BEING 6054.61 FEET.



NOTE:
THE AS-DRILLED BOTTOM HOLE FOR THIS
WELL BEARS N84°23'50"E 11007.32' FROM
THE AS-DRILLED WELLHEAD.



LEGEND:
● = AS-DRILLED WELLHEAD.
◆ = AS-DRILLED PERFORATION.
○ = AS-DRILLED BOTTOM HOLE.
▲ = SECTION CORNERS LOCATED. (NAD 83)

NAD 83 (AS-DRILLED SURFACE LOCATION)	NAD 83 (TOP PERFORATION)	NAD 83 (BOTTOM PERFORATION)	NAD 83 (AS-DRILLED BOTTOM HOLE)
LATITUDE = 39°44'48.47" (39.746797°)	LATITUDE = 39°45'00.47" (39.750132°)	LATITUDE = 39°44'59.25" (39.749792°)	LATITUDE = 39°44'59.21" (39.749780°)
LONGITUDE = 104°37'24.56" (104.623489°)	LONGITUDE = 104°37'10.03" (104.619451°)	LONGITUDE = 104°35'06.61" (104.585168°)	LONGITUDE = 104°35'04.37" (104.584546°)
NAD 27 (AS-DRILLED SURFACE LOCATION)	NAD 27 (TOP PERFORATION)	NAD 27 (BOTTOM PERFORATION)	NAD 27 (AS-DRILLED BOTTOM HOLE)
LATITUDE = 39°44'48.52" (39.746811°)	LATITUDE = 39°45'00.52" (39.750145°)	LATITUDE = 39°44'59.30" (39.749806°)	LATITUDE = 39°44'59.26" (39.749794°)
LONGITUDE = 104°37'22.68" (104.622967°)	LONGITUDE = 104°37'08.14" (104.618929°)	LONGITUDE = 104°35'04.73" (104.584647°)	LONGITUDE = 104°35'02.49" (104.584025°)
STATE PLANE NAD 83 (CO. NORTH)	STATE PLANE NAD 83 (CO. NORTH)	STATE PLANE NAD 83 (CO. NORTH)	STATE PLANE NAD 83 (CO. NORTH)
N: 1151830.44' E: 3246465.27'	N: 1153056.47' E: 3247588.60'	N: 1153030.32' E: 3257229.17'	N: 1153027.83' E: 3257404.09'
STATE PLANE NAD 27 (CO. NORTH)	STATE PLANE NAD 27 (CO. NORTH)	STATE PLANE NAD 27 (CO. NORTH)	STATE PLANE NAD 27 (CO. NORTH)
N: 151833.94' E: 2246618.63'	N: 153059.97' E: 2247741.92'	N: 153033.96' E: 2257382.41'	N: 153031.47' E: 2257557.32'

CERTIFICATE OF REGISTRATION
THIS IS TO CERTIFY THAT THE ABOVE DESCRIBED SURVEY WAS MADE BY ME OR UNDER MY SUPERVISION AND THAT THE SAME ARE TRUE AND CORRECT TO THE BEST OF MY KNOWLEDGE AND BELIEF.
REGISTERED LAND SURVEYOR
REGISTRATION NO. 28285
STATE OF COLORADO
JUL 19 2019



UINTEAH
ENGINEERING & LAND SURVEYING

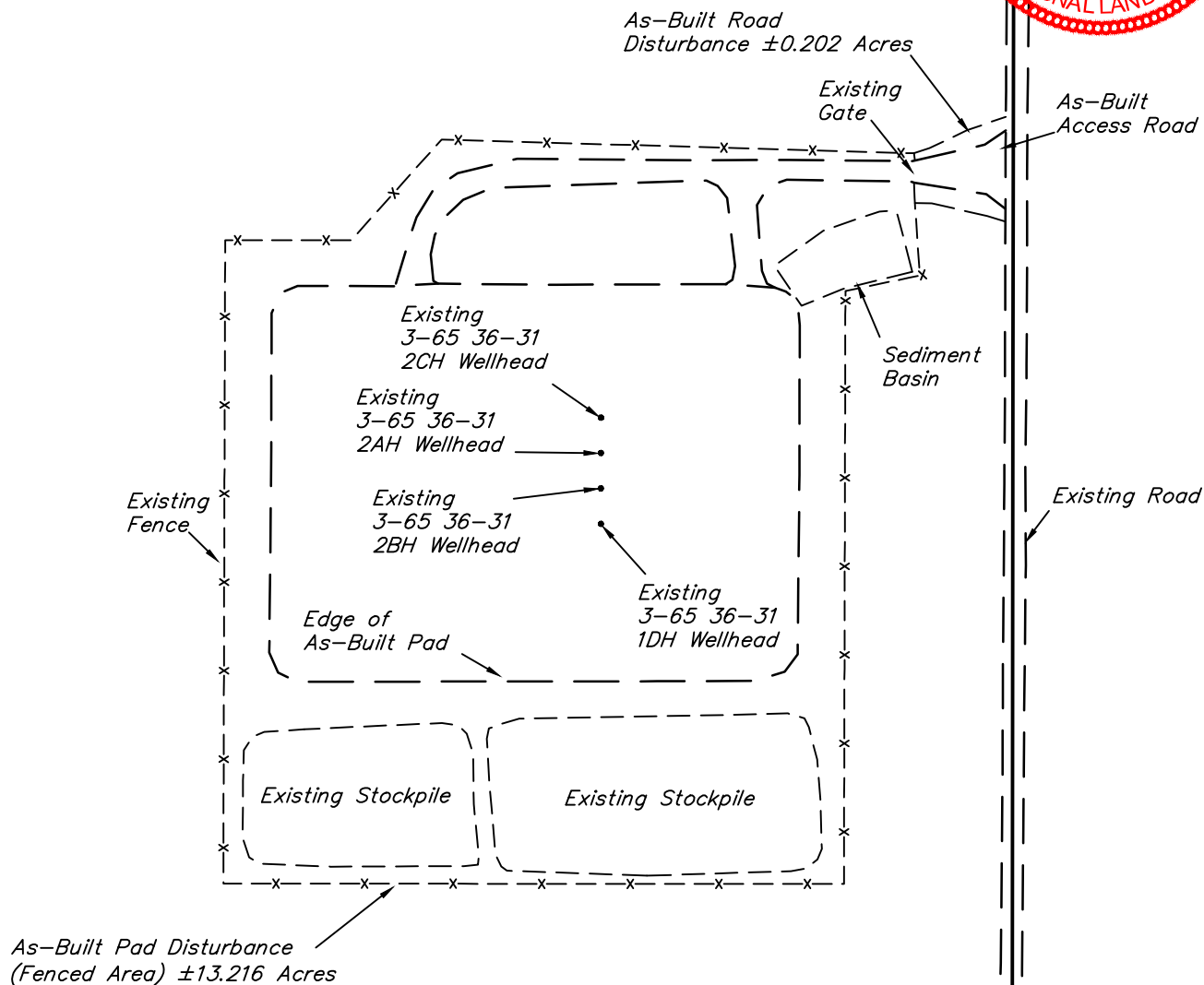
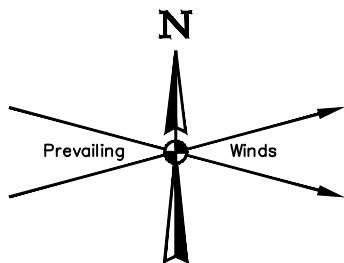
UELS, LLC
Corporate Office * 85 South 200 East
Vernal, UT 84078 * (435) 789-1017

SURVEYED BY CHAD MEIERS, R.F.
DRAWN BY S.F.

07-05-17
08-27-19

SCALE
1" = 1000'

AS-DRILLED WELL LOCATION PLAT



Section 35
Section 36

APPROXIMATE SURFACE DISTURBANCE AREAS	
	ACRES
AS-BUILT WELL SITE DISTURBANCE (FENCED AREA)	±13.216
AS-BUILT ROAD DISTURBANCE	±0.202
TOTAL AS-BUILT SURFACE USE AREA	±13.418

NOTES:

ConocoPhillips Company

**BIG SANDY #3-65 36-31 2CH, 2AH, 2BH & 1DH
NE 1/4 SE 1/4, SECTION 35, T3S, R65W, 6th P.M.
ADAMS COUNTY, COLORADO**



UELS, LLC
Corporate Office * 85 South 200 East
Vernal, UT 84078 * (435) 789-1017

SURVEYED BY	MATTHEW MILLER, C.M.	04-13-18	SCALE
DRAWN BY	K.M.R.	04-23-18	1" = 200'
AS-BUILT			

ConocoPhillips Company
BIG SANDY #3-65 36-31 2CH, 2AH, 2BH, & 1DH
NE 1/4 SE 1/4, SECTION 35, T3S, R65W, 6th P.M.
ADAMS COUNTY, COLORADO
DATE: 04-23-18 K.M.R.

Well Name	Footages	Lat: (NAD 27)	Long: (NAD 27)	Lat: (NAD 83)	Long: (NAD 83)	Elevation	Section	Township	Range	Qtr./Qtr.	PDOP	DATE COMPLETED	SURVEYED BY
BIG SANDY #3-65 36-31 2CH	2585' FSL 465' FEL	39°44'48.91 (39.746919°)	104°37'22.68 (104.622966°)	39°44'48.86 (39.746906°)	104°37'24.56 (104.623489°)	5525.6	35	3S	65W	NE/SE	1.3	4/13/2018	MATTHEW MILLER
BIG SANDY #3-65 36-31 2AH	2545' FSL 465' FEL	39°44'48.52(39.746810°)	104°37'22.68 (104.622967°)	39°44'48.47 (39.746797°)	104°37'24.56 (104.623490°)	5525.6	35	3S	65W	NE/SE	1.3	4/13/2018	MATTHEW MILLER
BIG SANDY #3-65 36-31 2BH	2505' FSL 465' FEL	39°44'48.12 (39.746700°)	104°37'22.68 (104.622968°)	39°44'48.07 (39.746687°)	104°37'24.57(104.623491°)	5525.6	35	3S	65W	NE/SE	1.3	4/13/2018	MATTHEW MILLER
BIG SANDY #3-65 36-31 1DH	2465' FSL 465' FEL	39°44'47.72 (39.746590°)	104°37'22.69 (104.622968°)	39°44'47.68 (39.746577°)	104°37'24.57 (104.623491°)	5525.6	35	3S	65W	NE/SE	1.3	4/13/2018	MATTHEW MILLER