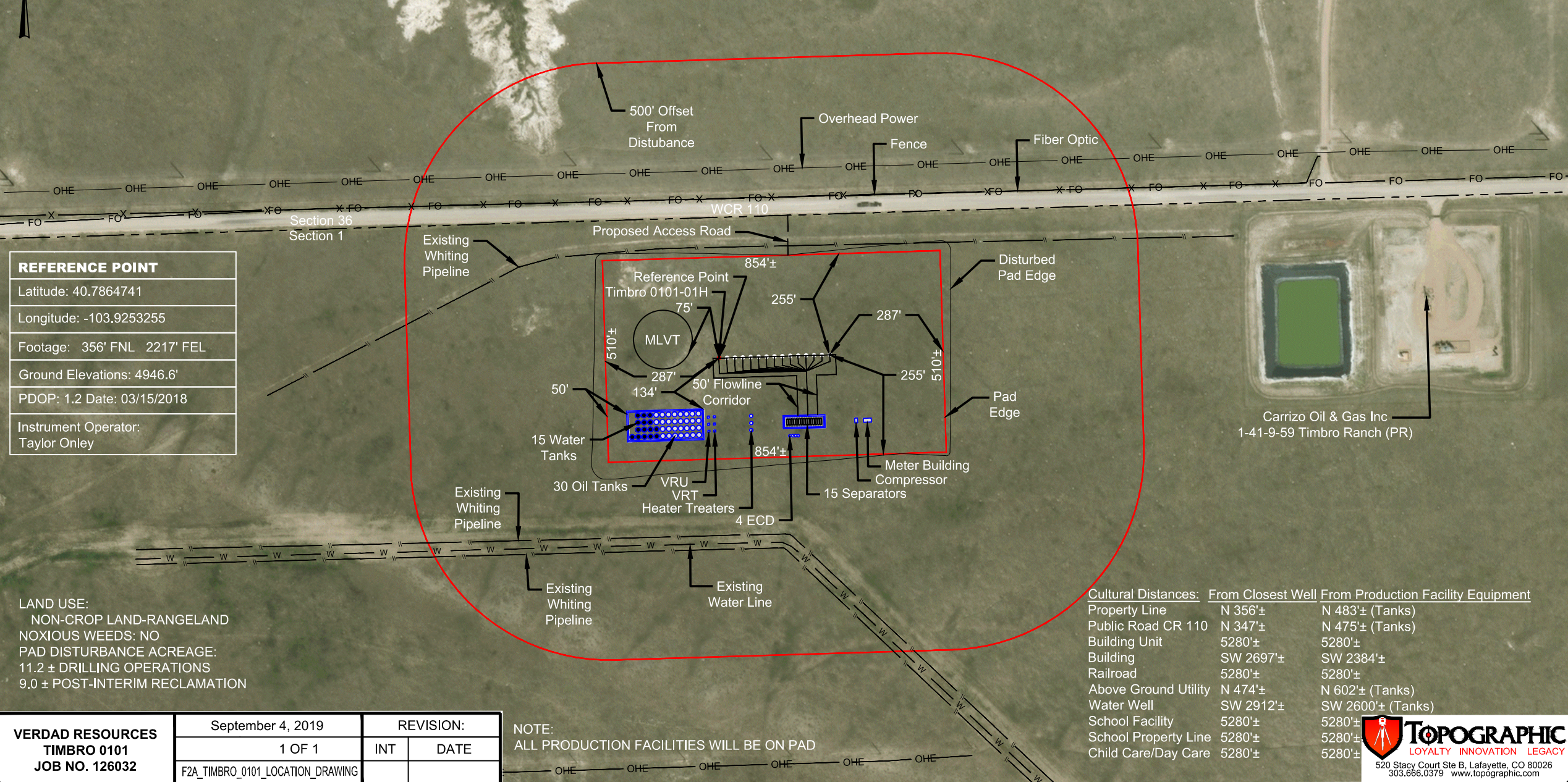


**LOCATION DRAWING**  
 NW 1/4 NE 1/4 SECTION 1  
 T9N R59W 6TH PM  
 WELD COUNTY, COLORADO



SCALE: 1" = 300'  
 0' 150' 300'



REFERENCE POINT
Latitude: 40.7864741
Longitude: -103.9253255
Footage: 356' FNL 2217' FEL
Ground Elevations: 4946.6'
PDOP: 1.2 Date: 03/15/2018
Instrument Operator: Taylor Onley

LAND USE:  
 NON-CROP LAND-RANGELAND  
 NOXIOUS WEEDS: NO  
 PAD DISTURBANCE ACREAGE:  
 11.2 ± DRILLING OPERATIONS  
 9.0 ± POST-INTERIM RECLAMATION

Cultural Distances:	From Closest Well	From Production Facility Equipment
Property Line	N 356'±	N 483'± (Tanks)
Public Road CR 110	N 347'±	N 475'± (Tanks)
Building Unit	5280'±	5280'±
Building	SW 2697'±	SW 2384'±
Railroad	5280'±	5280'±
Above Ground Utility	N 474'±	N 602'± (Tanks)
Water Well	SW 2912'±	SW 2600'± (Tanks)
School Facility	5280'±	5280'±
School Property Line	5280'±	5280'±
Child Care/Day Care	5280'±	5280'±

**VERDAD RESOURCES**  
**TIMBRO 0101**  
**JOB NO. 126032**

September 4, 2019	REVISION:	
1 OF 1	INT	DATE
F2A_TIMBRO_0101_LOCATION_DRAWING		

NOTE:  
 ALL PRODUCTION FACILITIES WILL BE ON PAD

**TOPOGRAPHIC**  
 LOYALTY INNOVATION LEGACY  
 520 Stacy Court Ste B, Lafayette, CO 80026  
 303.666.0379 www.topographic.com