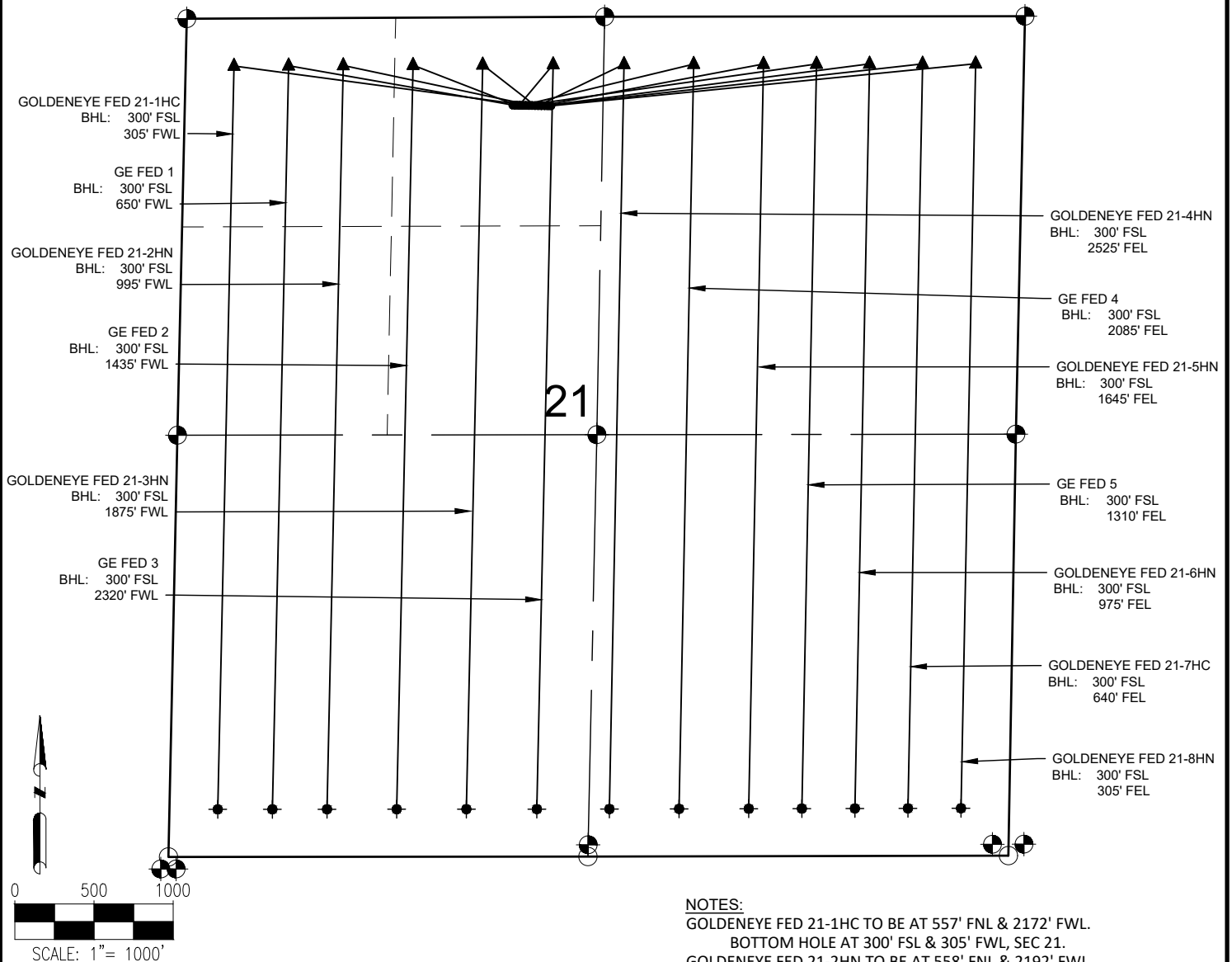


# GOLDENEYE EAST PAD MULTI-WELL PLAN



## NOTES:

- GOLDENEYE FED 21-1HC TO BE AT 557' FNL & 2172' FWL.  
BOTTOM HOLE AT 300' FSL & 305' FWL, SEC 21.
- GOLDENEYE FED 21-2HN TO BE AT 558' FNL & 2192' FWL.  
BOTTOM HOLE AT 300' FSL & 995' FWL, SEC 21.
- GOLDENEYE FED 21-3HN TO BE AT 558' FNL & 2212' FWL.  
BOTTOM HOLE AT 300' FSL & 1875' FWL, SEC 21.
- GOLDENEYE FED 21-4HN TO BE AT 559' FNL & 2232' FWL.  
BOTTOM HOLE AT 300' FSL & 2525' FEL, SEC 21.
- GOLDENEYE FED 21-5HN TO BE AT 559' FNL & 2252' FWL.  
BOTTOM HOLE AT 300' FSL & 1645' FEL, SEC 21.
- GOLDENEYE FED 21-6HN TO BE AT 560' FNL & 2272' FWL.  
BOTTOM HOLE AT 300' FSL & 975' FEL, SEC 21.
- GOLDENEYE FED 21-7HC TO BE AT 560' FNL & 2292' FWL.  
BOTTOM HOLE AT 300' FSL & 640' FEL, SEC 21.
- GOLDENEYE FED 21-8HN TO BE AT 561' FNL & 2312' FWL.  
BOTTOM HOLE AT 300' FSL & 305' FEL, SEC 21.
- GE FED 1 TO BE AT 555' FNL & 2072' FWL.  
BOTTOM HOLE AT 300' FSL & 650' FWL, SEC 21.
- GE FED 2 TO BE AT 556' FNL & 2092' FWL.  
BOTTOM HOLE AT 300' FSL & 1435' FWL, SEC 21.
- GE FED 3 TO BE AT 556' FNL & 2112' FWL.  
BOTTOM HOLE AT 300' FSL & 2320' FWL, SEC 21.
- GE FED 4 TO BE AT 556' FNL & 2132' FWL.  
BOTTOM HOLE AT 300' FSL & 2085' FEL, SEC 21.
- GE FED 5 TO BE AT 557' FNL & 2152' FWL.  
BOTTOM HOLE AT 300' FSL & 1310' FEL, SEC 21.

## LEGEND

- = EXISTING MONUMENT
- = CALCULATED POSITION
- = PROPOSED WELL
- ◆ = EXISTING WELL
- ▲ = LANDING POINT
- LP = LANDING POINT
- BHL = BOTTOM HOLE LOCATION
- W.C. = WITNESS CORNER
- R.M. = RECORD MONUMENT

## NOTES:

1. THIS FIELD SURVEY CONFORMS TO THE MINIMUM STANDARDS SET BY THE C.O.G.C.C., RULE NO. 215
2. ALL DISTANCES AND BEARINGS SHOWN HEREON ARE GROUND VALUES AS GPS MEASURED IN THE FIELD, WITH TIES TO WELLS MEASURED PERPENDICULAR TO LINES SHOWN HEREON. THIS LOW DISTORTION PROJECTION (LDP) IS BASED ON THE NORTH AMERICAN DATUM OF 1983, U.S. SURVEY FOOT WITH A LATITUDE ORIGIN OF 40.655085°N, A CENTRAL MERIDIAN LONGITUDE OF 104.086861°W, AND A SCALE FACTOR ON THE CENTRAL MERIDIAN OF 1.000232 (EXACT). THE LDP BASIS OF BEARINGS IS GEODETIC NORTH.
3. FIELD VERIFICATION OF MONUMENTS COMPLETED WITHIN 1 YEAR OF SIGNATURE DATE, UNLESS OTHERWISE NOTED.