

Mud Properties Record

Date / Time	Run No.	Depth (ft)	Mud Type	Density (ppg)	Viscosity (cP)	pH	Fluid Loss (cm3)	Oil / Water	Source	Total Chlorides (ppm)	K+ (%)
2019-06-17 18:00	1	2642.00	Diesel-Oil Based Mud	8.9	14	N/A	10.0	69/23	Active Pit	31000	0.00
2019-06-18 18:00	1	7839.00	Diesel-Oil Based Mud	8.8	13	N/A	8.0	69/23	Active Pit	33000	0.00
2019-06-19 18:00	1	11897.00	Diesel-Oil Based Mud	9.1	14	N/A	6.0	67/23	Active Pit	34000	0.00

Mud Resistivity Record

Date / Time	Run No.	Depth (ft)	Surface Temp (degF)	Surface			BHCT (degF)	Downhole		
				Rm (ohm.m)	Rmf (ohm.m)	Rmc (ohm.m)		Rm @ BHCT (ohm.m)	Rmf @ BHCT (ohm.m)	Rmc @ BHCT (ohm.m)
2019-06-18 17:00	1	7400.00	N/A	100.000	N/A	N/A	236.0	100.000	N/A	N/A

Equipment and Service Data

Run No.	Tool	Serial Number	Measurement	Sensor Offset (ft)	Bit Offset (ft)	Max O.D. (in)	Min I.D. (in)
1	EvoOne	G650-0324	Gamma (single)	8.20	41.13	6.500	0.000
1	EvoOne	G650-0324	Directional (mag)	9.39	42.32	6.500	0.000
1	OnTrak	10458794	Pressure	1.14	6587.57	6.750	0.000
1	OnTrak	10458794	Gamma (double)	2.03	6588.46	6.750	0.000
1	OnTrak	10458794	Resistivity (4tx)	6.07	6592.50	6.750	0.000
1	OnTrak	10458794	Directional (mag)	11.86	6598.29	6.750	0.000

Service and Tool Mnemonics

Mnemonic	Name	Description
MWD	EvoOne - Dir Gamma	EvoOne
OTK	OnTrak	Sensor Sub (Inc, Azi, Temp, Azimuthal GR, Res, AP, VSS), OnTrak Platform

Comments

1	Depth measurements were obtained from a depth control system not supplied by Baker Hughes. Due to lack of control by Baker Hughes logging engineers depth calibrations and measurements could not be independently verified and the unverified depths as supplied to Baker Hughes are being used to represent logging data.
2	A sliding indicator is shown to the right edge of track 2 as a heavy line. The indicator has been depth-shifted to the Resistivity sensor offset to correspond with Resistivity data acquired while sliding.
3	Baker Hughes run 1 utilized 6.75 inch OnTrak services (Resistivity, Gamma Ray and Directional) behind a 7.875 inch bit and steerable assembly from 1933 to 7440 feet MD (1887 to 6973 feet TVD).
4	Gamma Ray (GRAX) scale is presented from a 0 to 200 API scale at the request of the customer.

Remarks

Number	Depth (ft)	Hole Section (in)	Run No.	Remark
1	1933.00	7.875	1	Baker Hughes began logging at 1933 feet MD (1887 feet TVD) per customer request.

Curve Mnemonics

Presented Curves	Description	Units
CACLM	Conductivity Attenuation - Corrected - 400kHz	mmho/m
RACHM	Resistivity Attenuation - Corrected - 2MHz	ohm.m
RACLM	Resistivity Attenuation - Corrected - 400kHz	ohm.m
RPCHM	Resistivity Phase - Corrected - 2MHz	ohm.m
RPCLM	Resistivity Phase - Corrected - 400kHz	ohm.m
RPTHM	Resistivity Time Since Drilled	min
SIFG	Sliding Indicator Flag	unitless
TCDX	Downhole Temperature	degF
ROPA	Depth Averaged ROP 3 ft Average	ft/h
TVD	True Vertical Depth	ft
GRAM	Gamma Ray - Apparent - Memory 0.5 ft Average	API
GRIM	Gamma Ray - Data Point Indicator - Memory	unitless



Company

Well

Interval

Created

Anadarko

JDB 15-4HZ

Date From: 2019-06-17 14:42

Date To: 2019-06-20 03:37

2019-06-20 19:05:33

Interval Drilled: (ft) 1933.00 - 14033.00

Interval Logged: (ft) 1933.00 - 7440.00

Gamma Ray - Apparent 0.5 ft Average [GRAM]

0 150

API

Depth Averaged ROP 3 ft Average [ROPA]

1200 0

ft/h

True Vertical Depth [TVD]

0 10000

ft

MD 1:240 feet

Resistivity Phase - Corrected - 2MHz [RPCHM]

0.2 200

ohm.m

Resistivity Phase - Corrected - 400kHz [RPCLM]

0.2 200

ohm.m

Resistivity Attenuation - Corrected - 2MHz [RACHM]

0.2 200

ohm.m

Resistivity Attenuation - Corrected - 400kHz
[RACLM]

0.2 200

ohm.m

Conductivity Attenuation - Corrected - 400kHz
[CACLM]

4000 0

mmho/m

Resistivity Time Since Drilled [RPTHM]

0 600

min

Tool Temperature [TCDX]

0 250

degF

9 5/8" Casing

See Remark 1

TVD

GRAM

GRIM

>Rt

RPCHM

RPCLM

RACHM

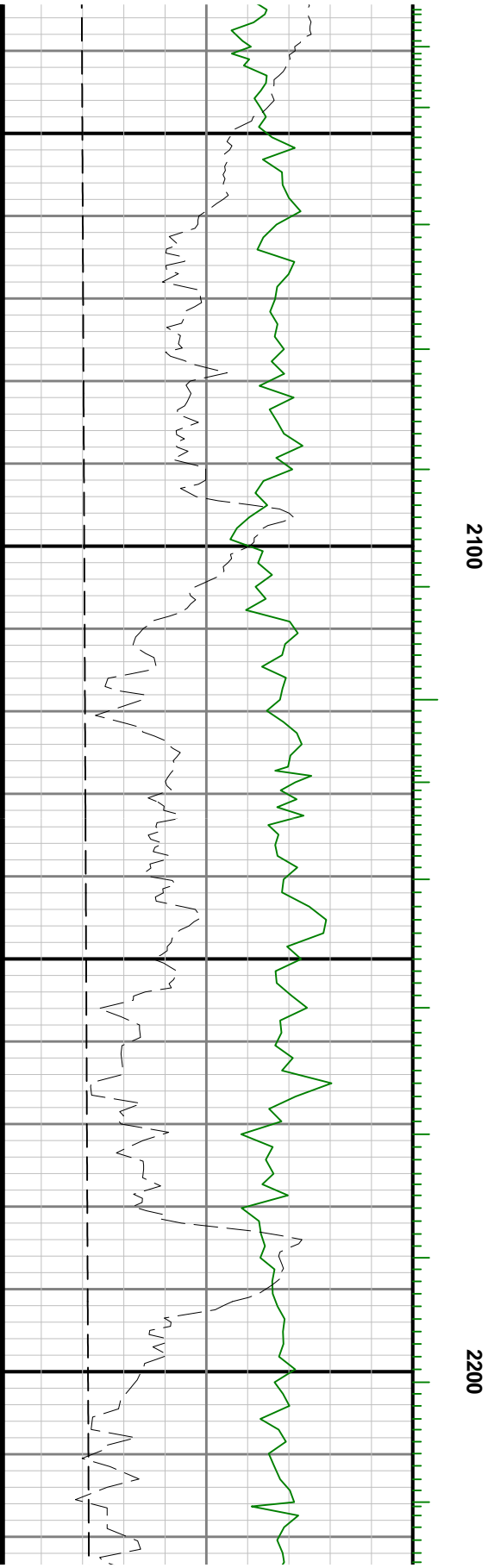
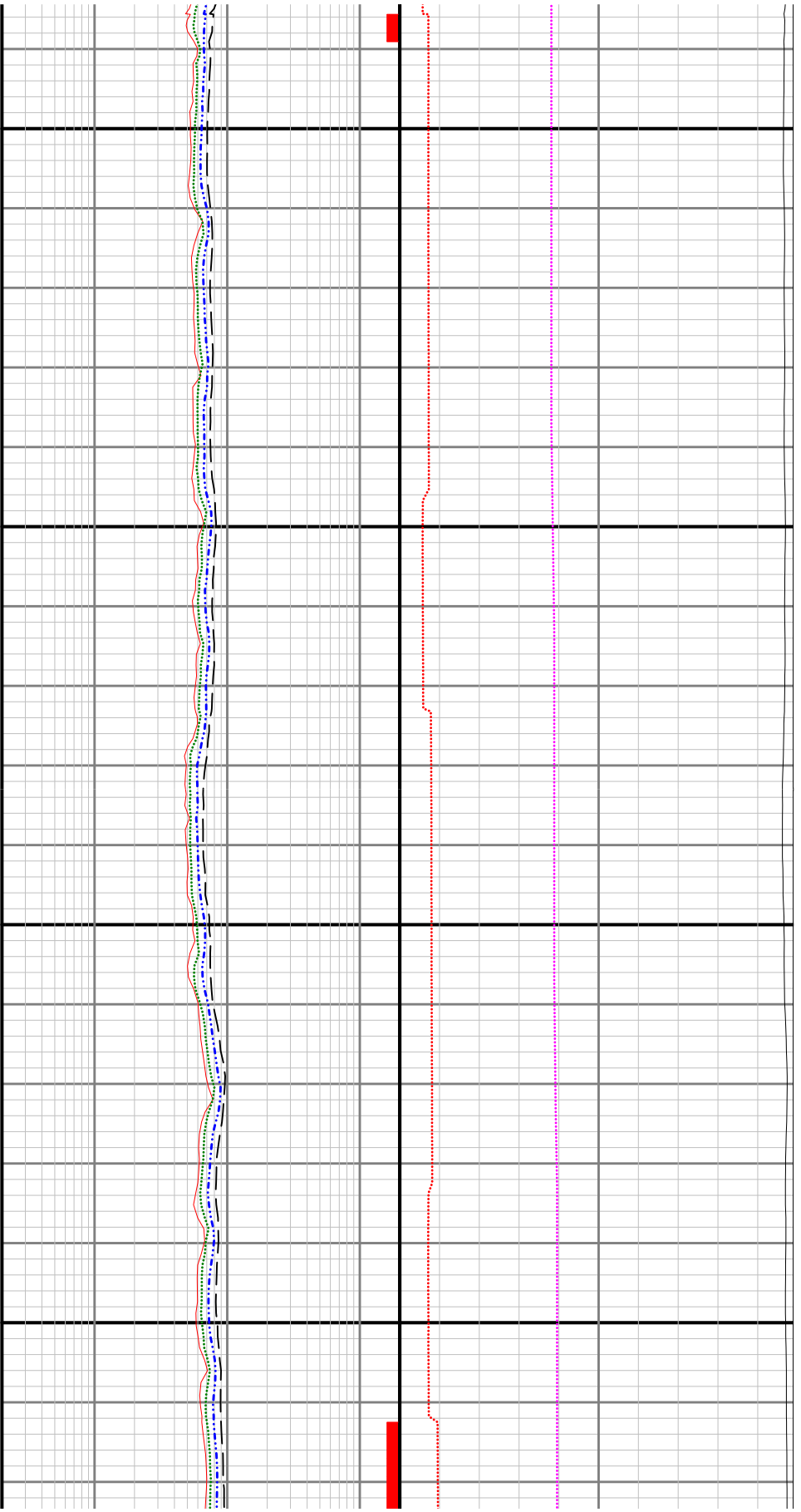
RACLM

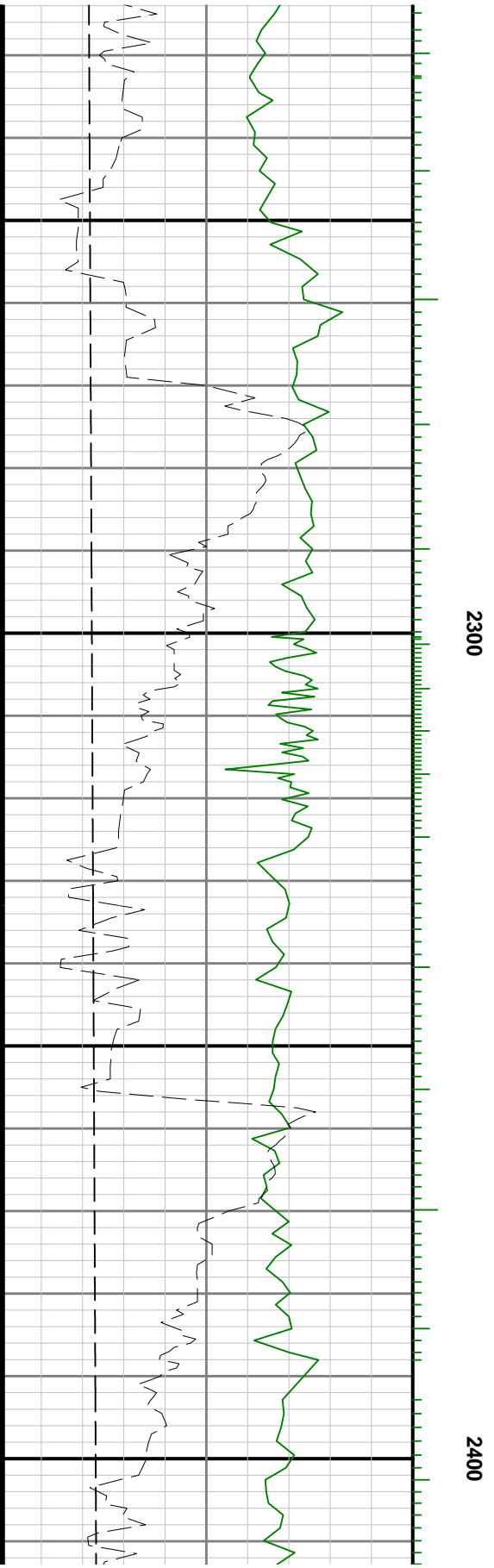
RPTHM TCDX

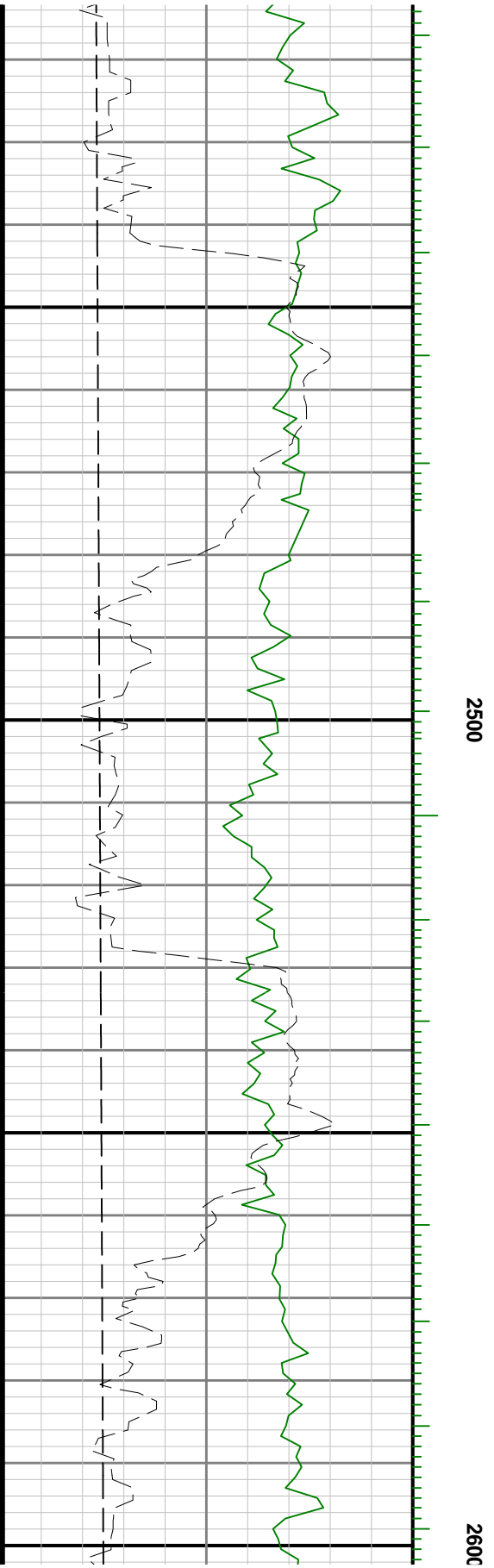
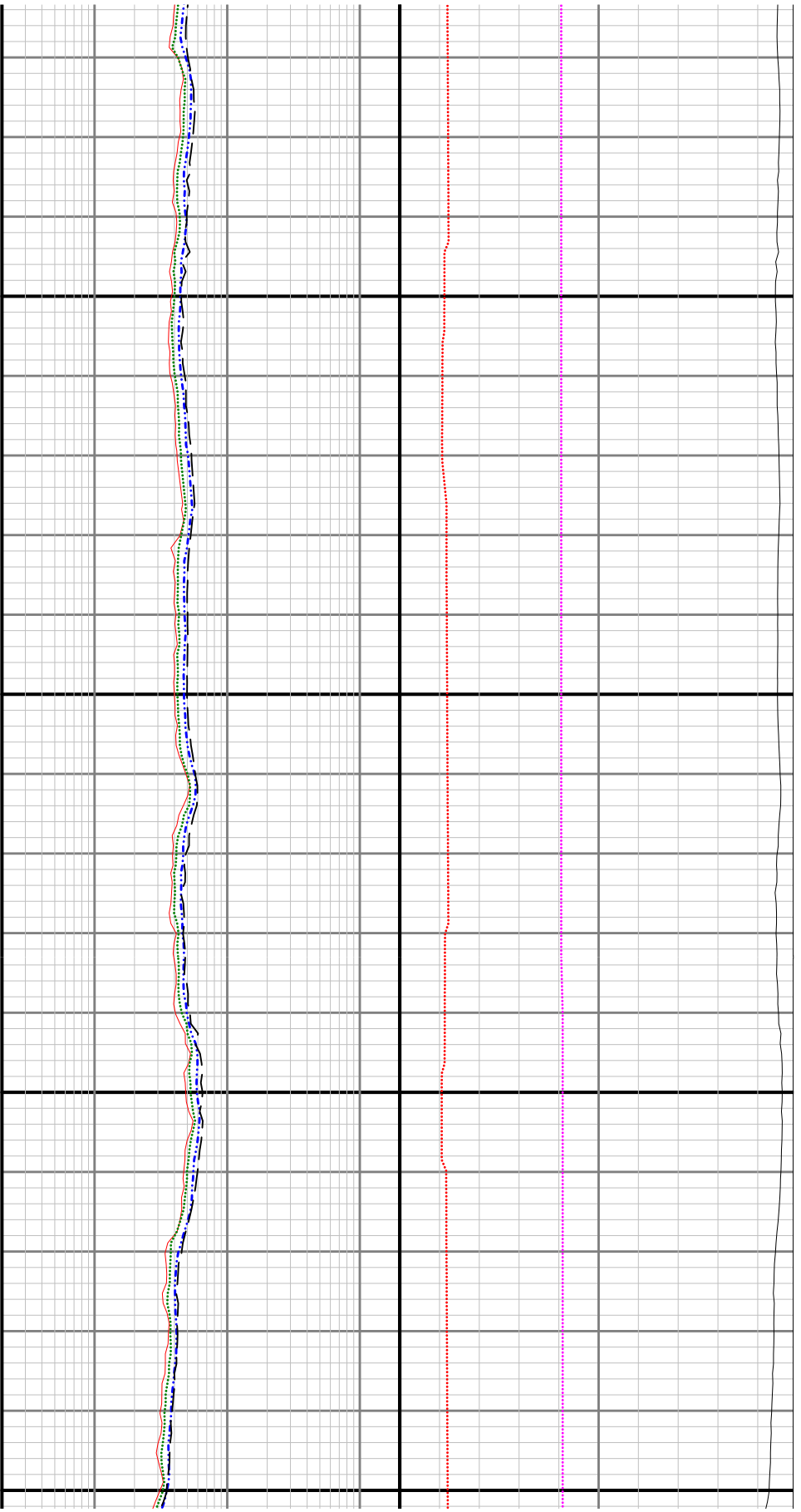
CACLM

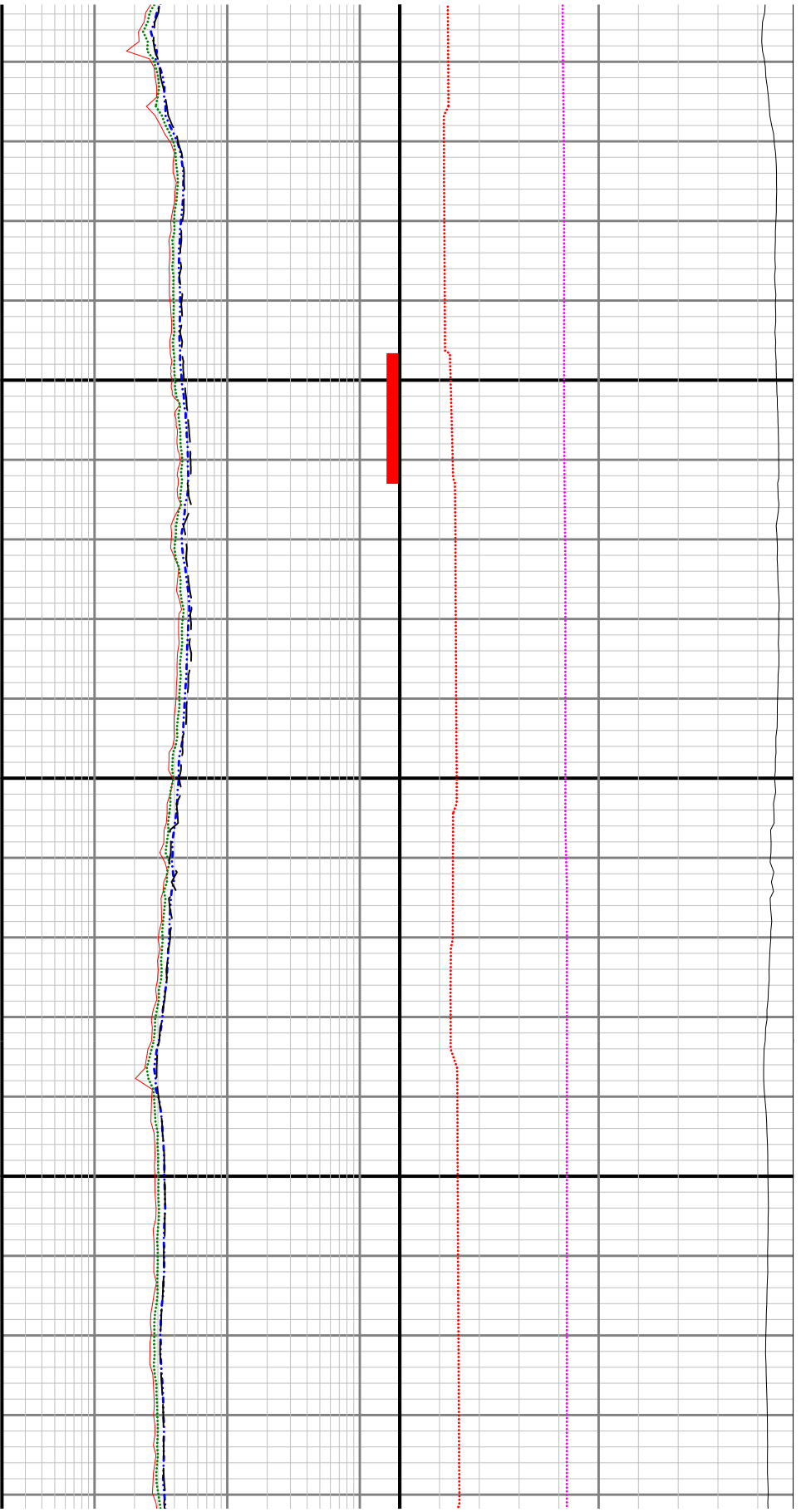
ROPA

2000

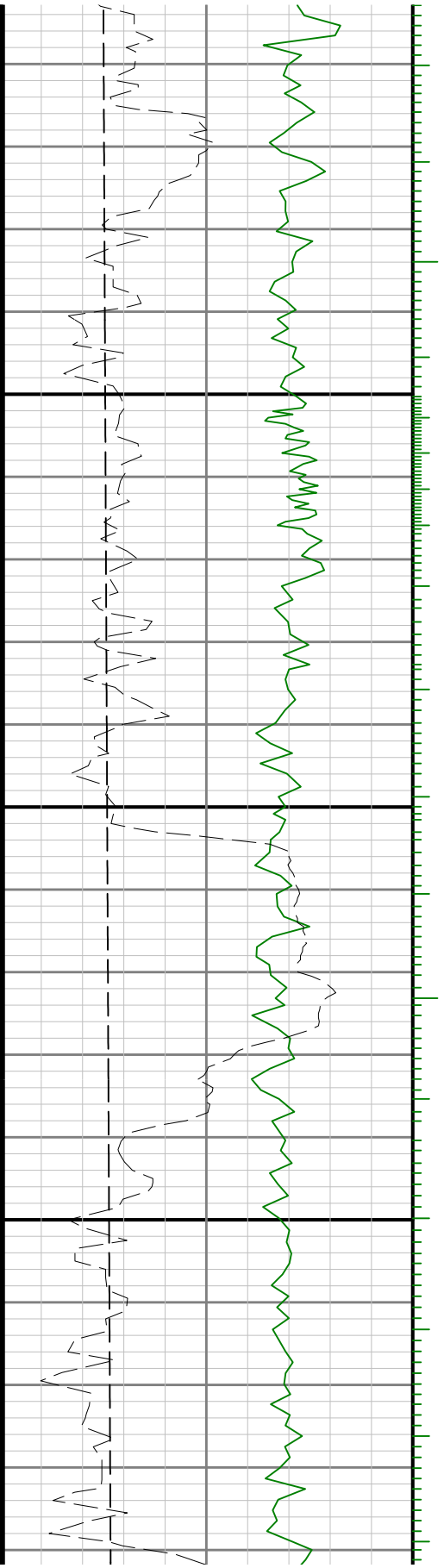


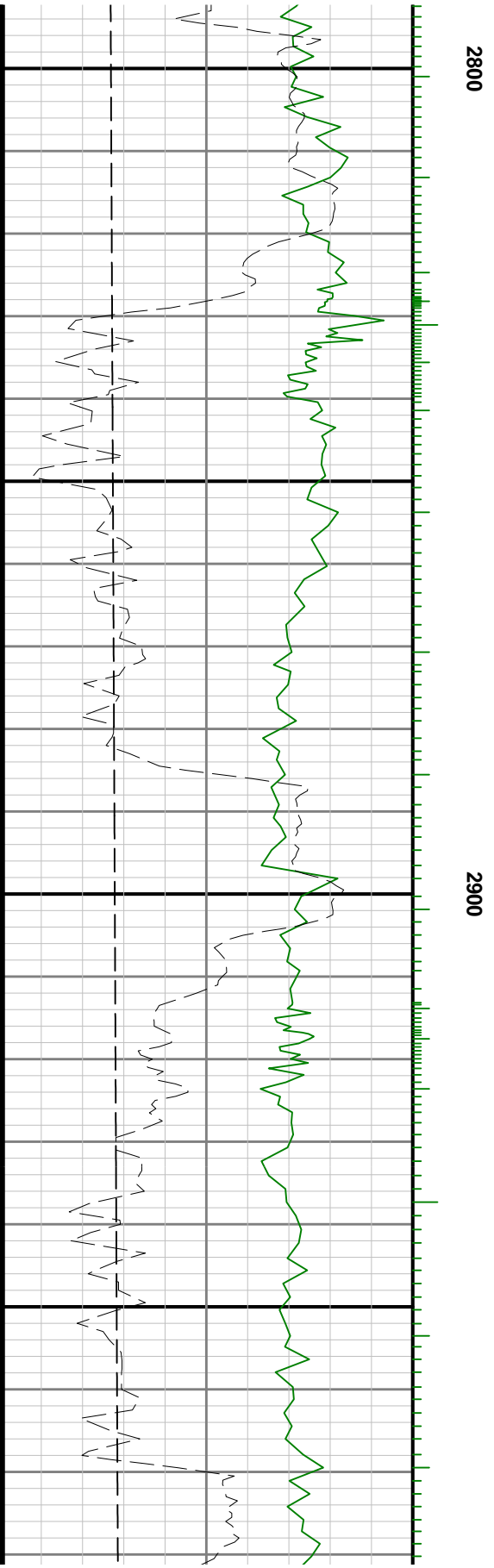
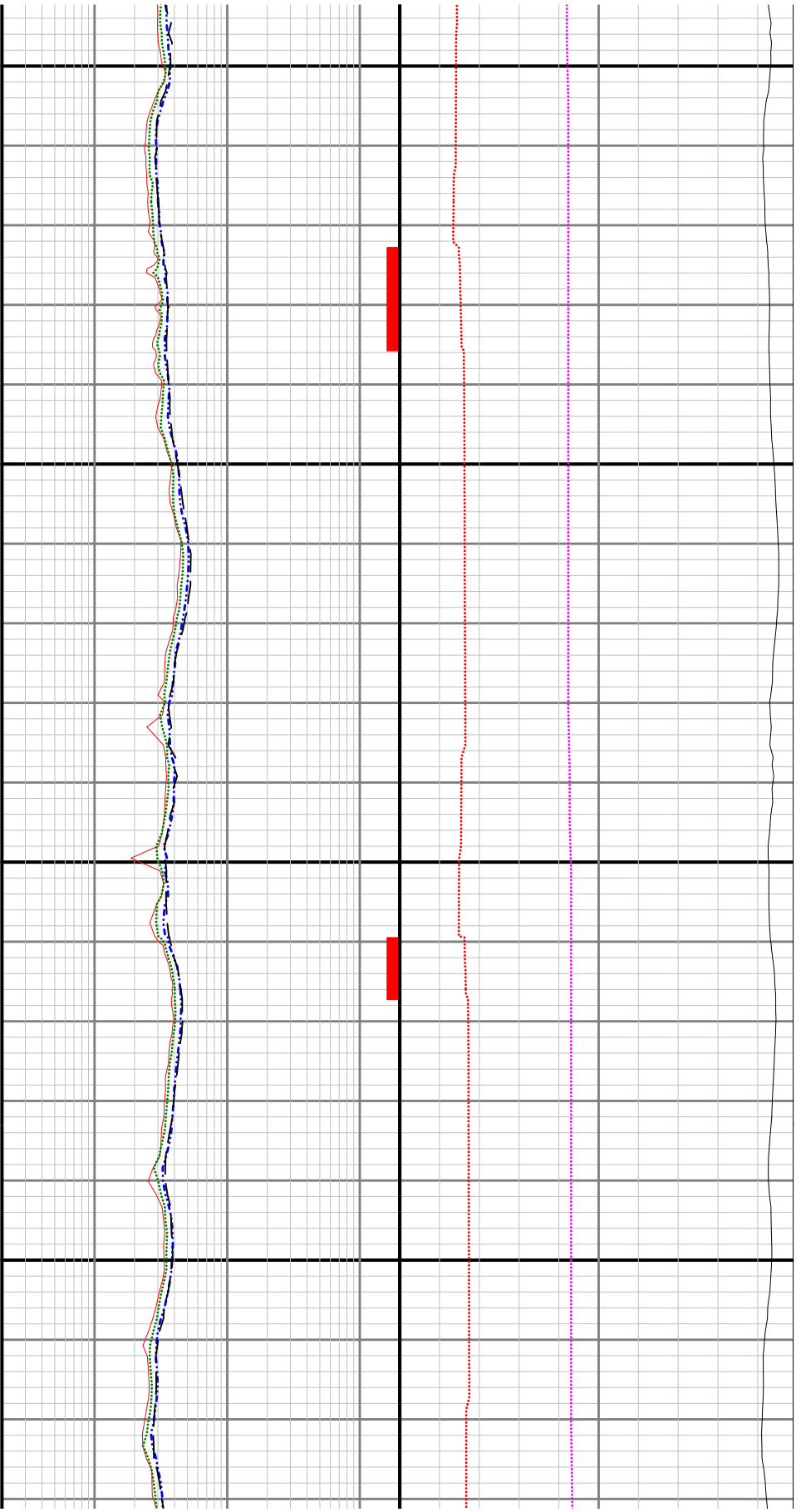


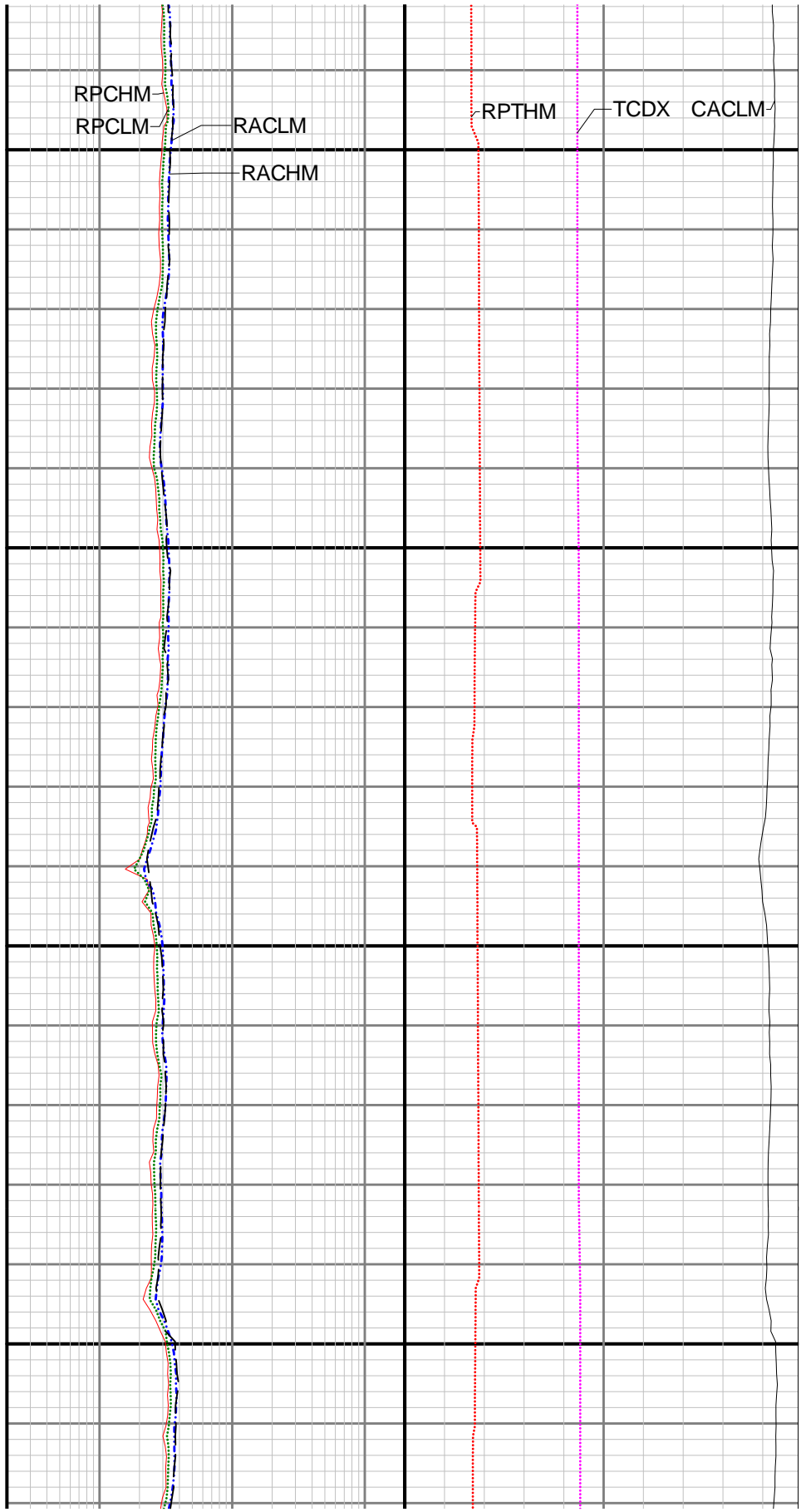
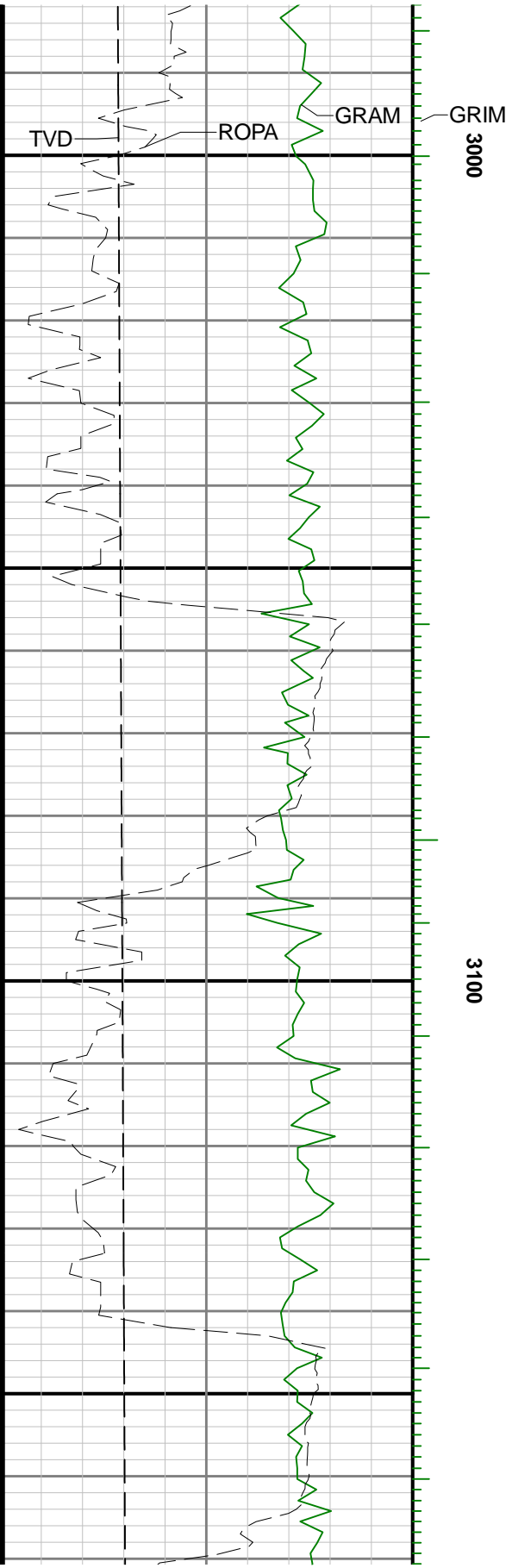


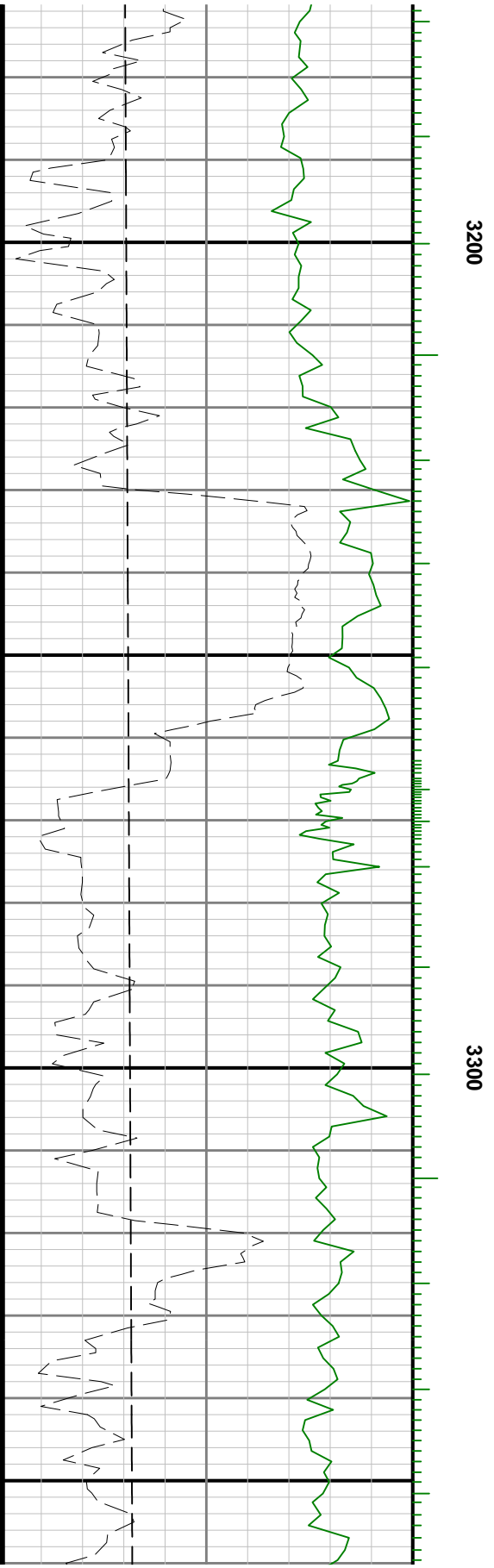
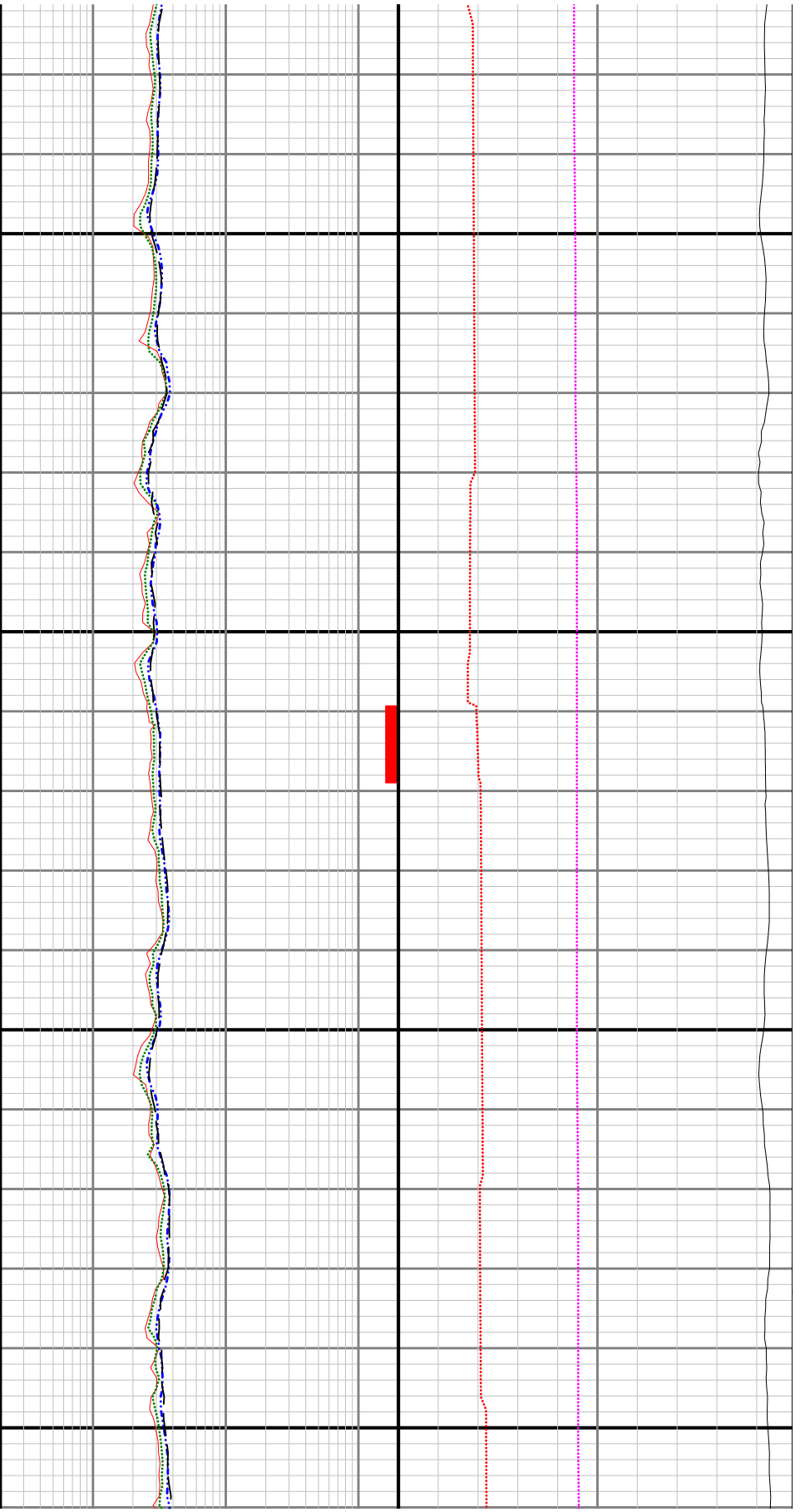


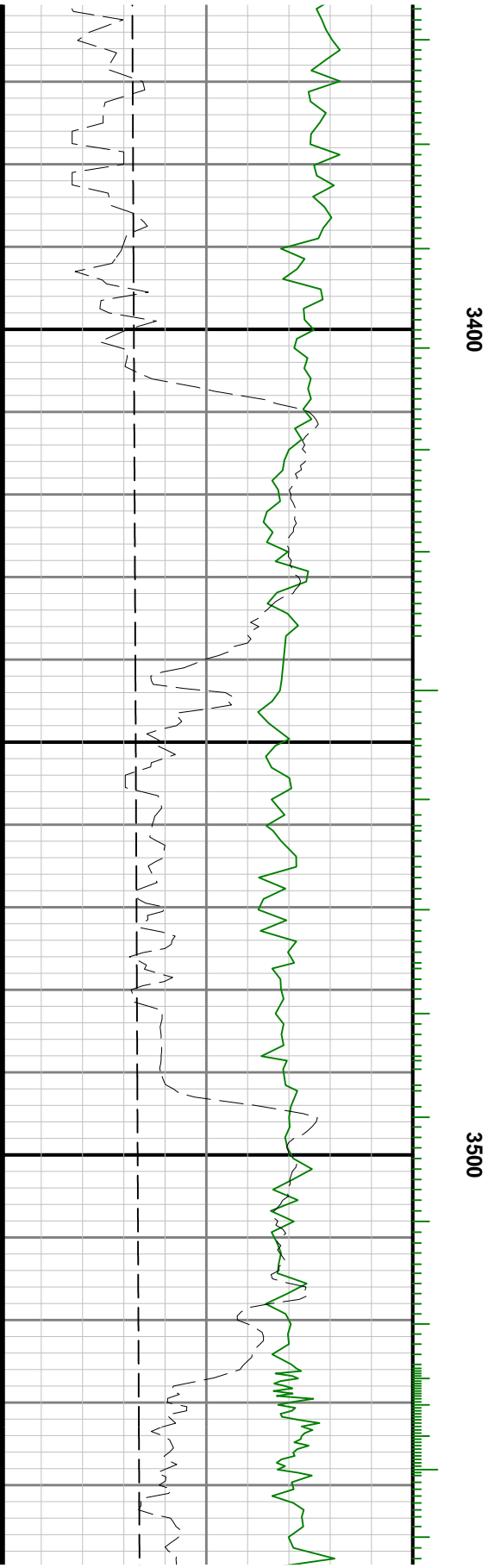
2700

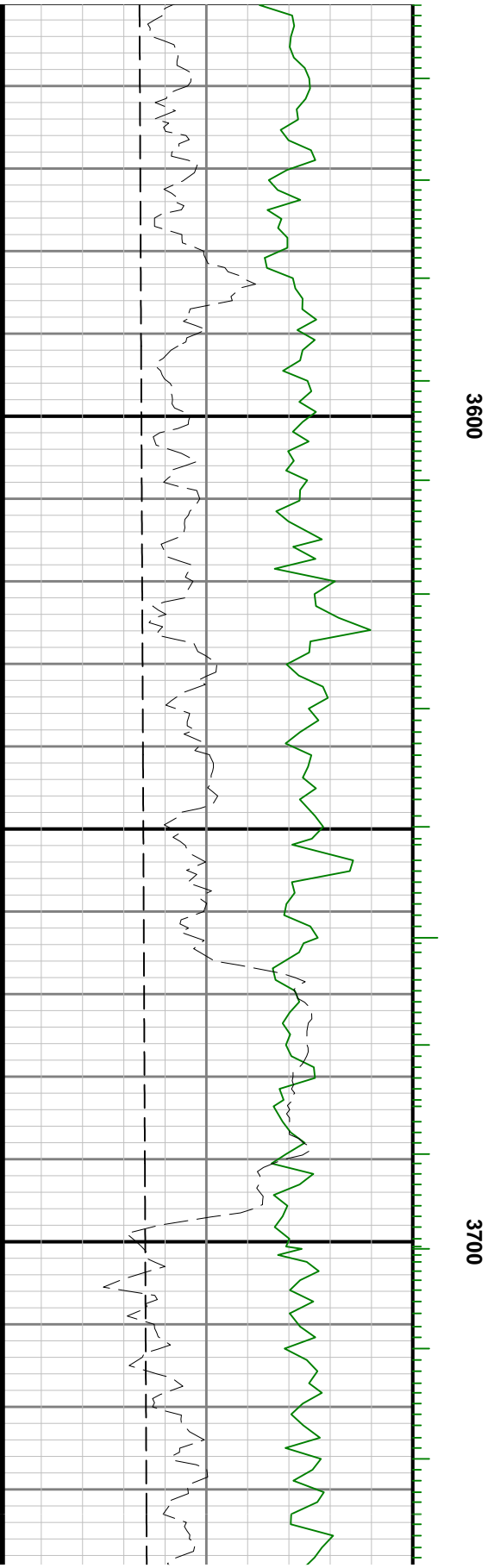
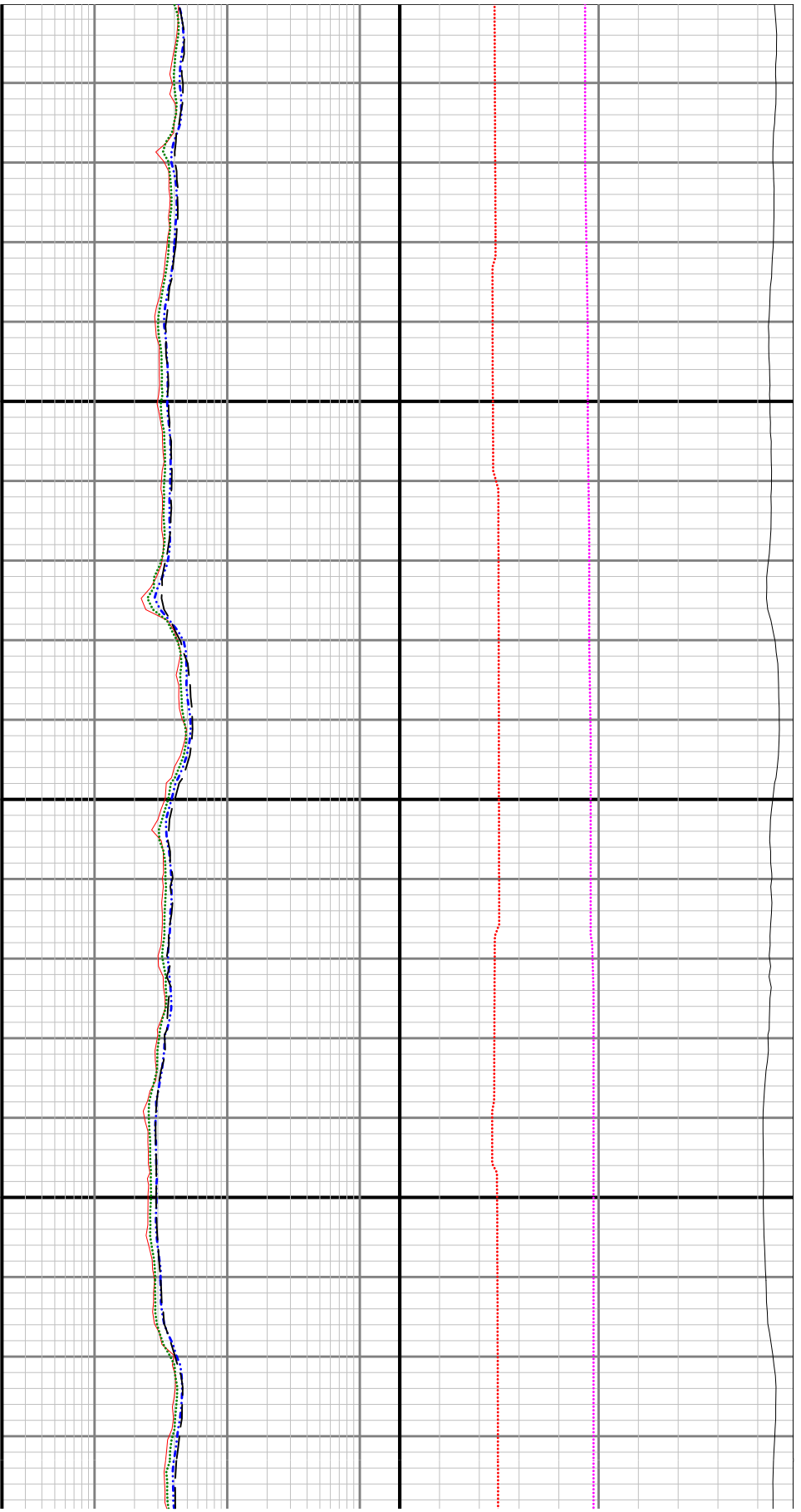


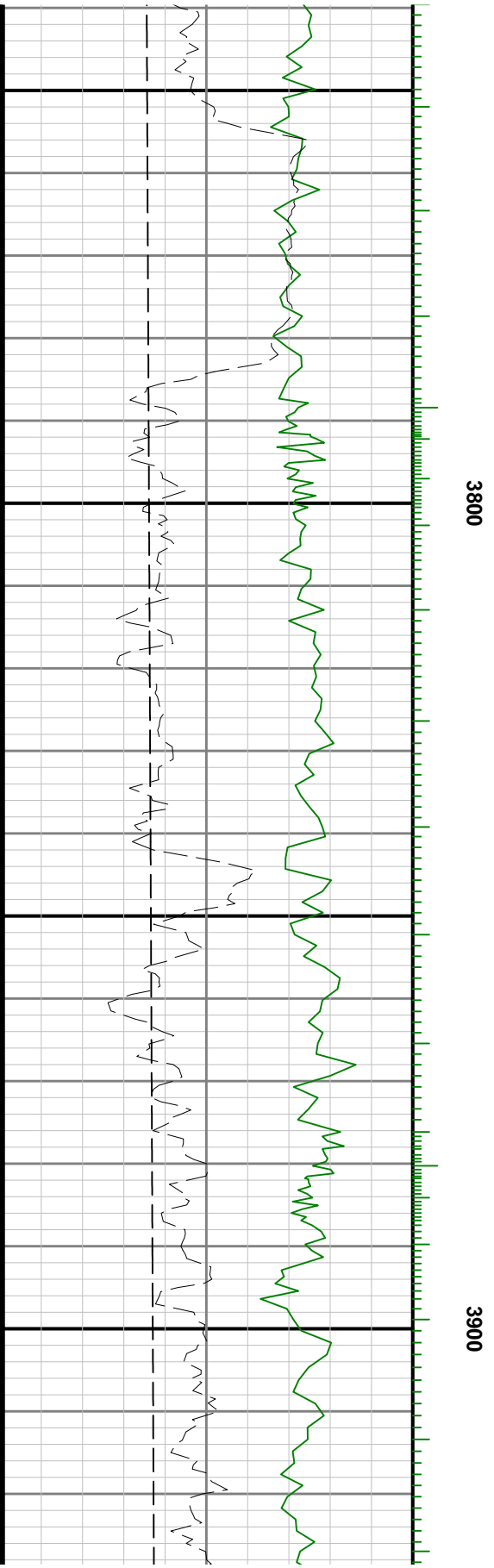
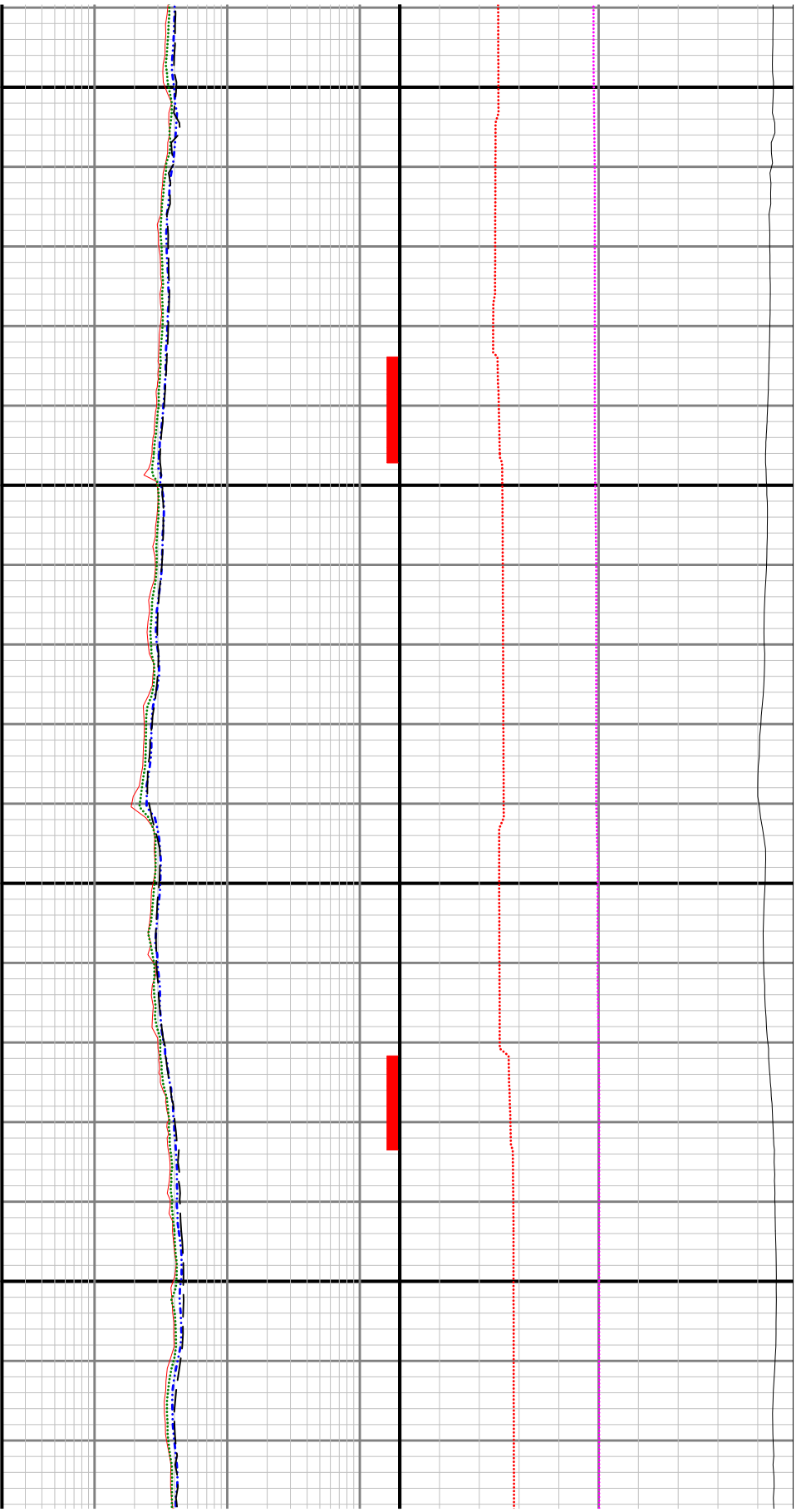


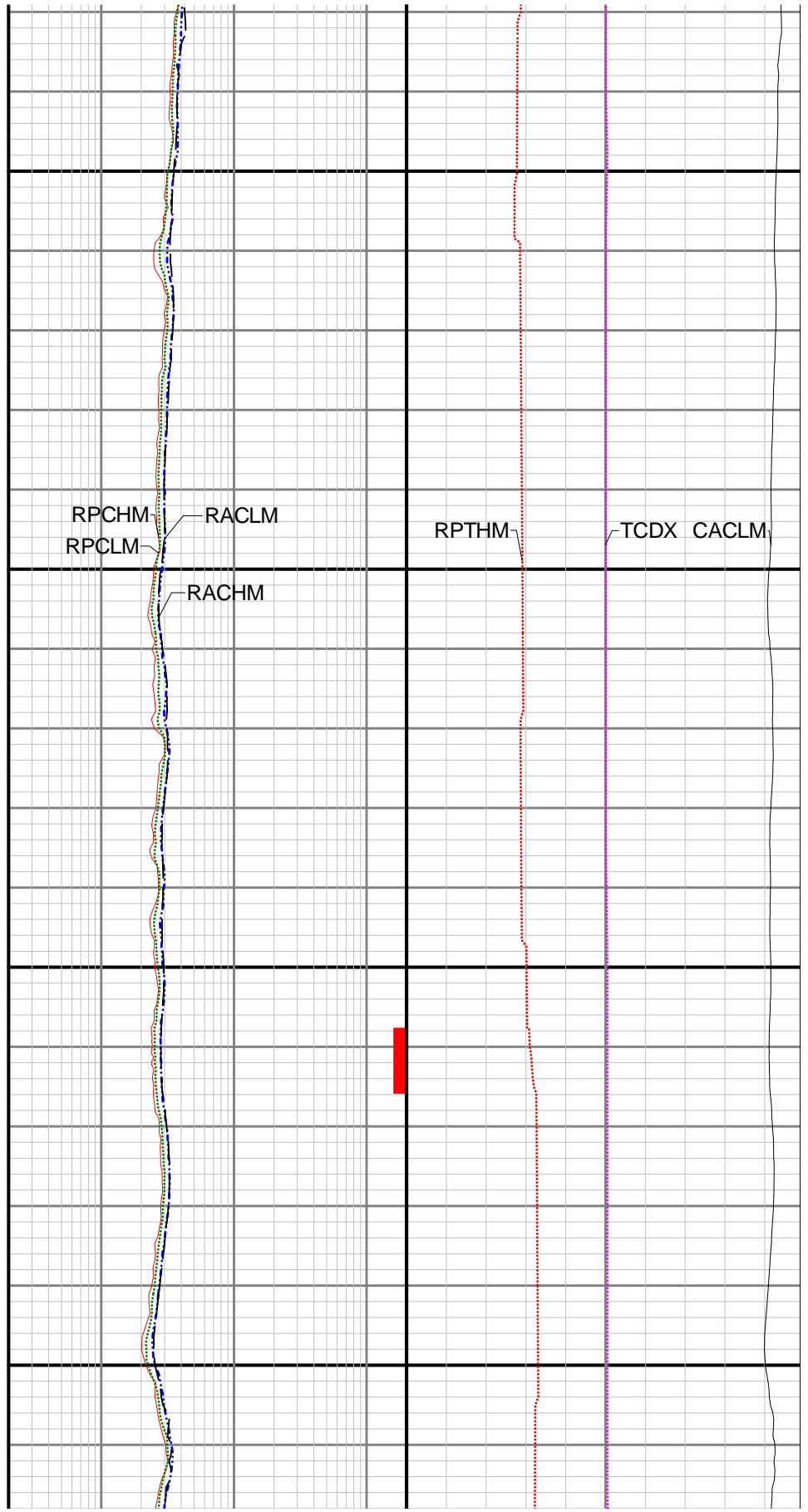
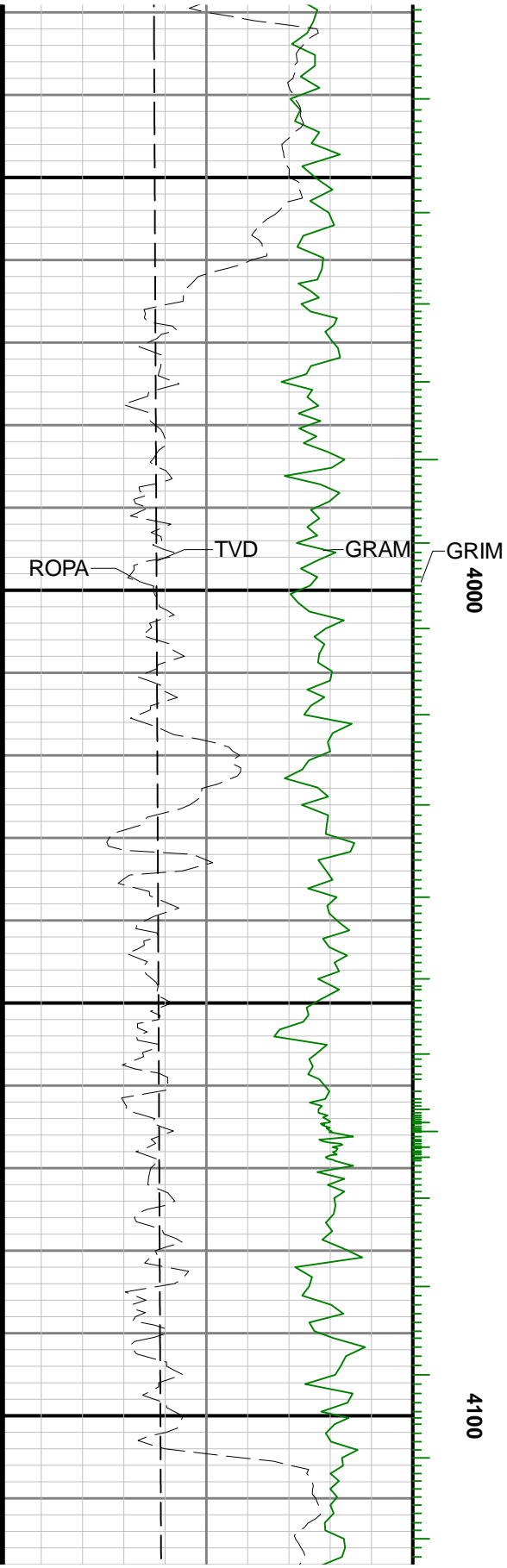


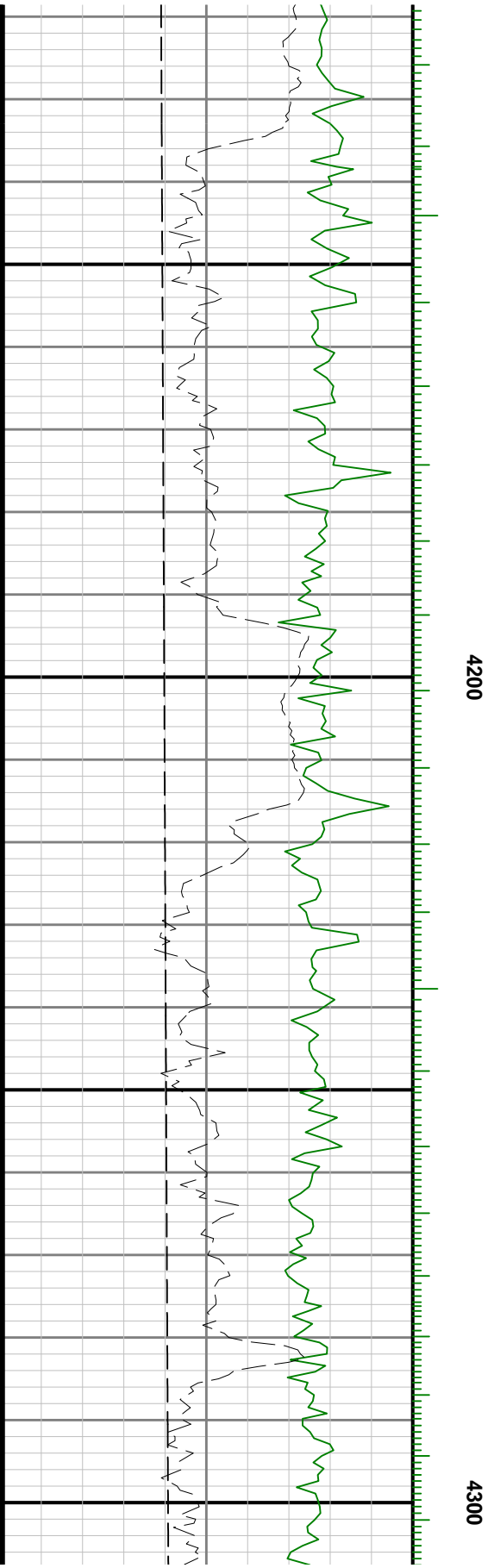
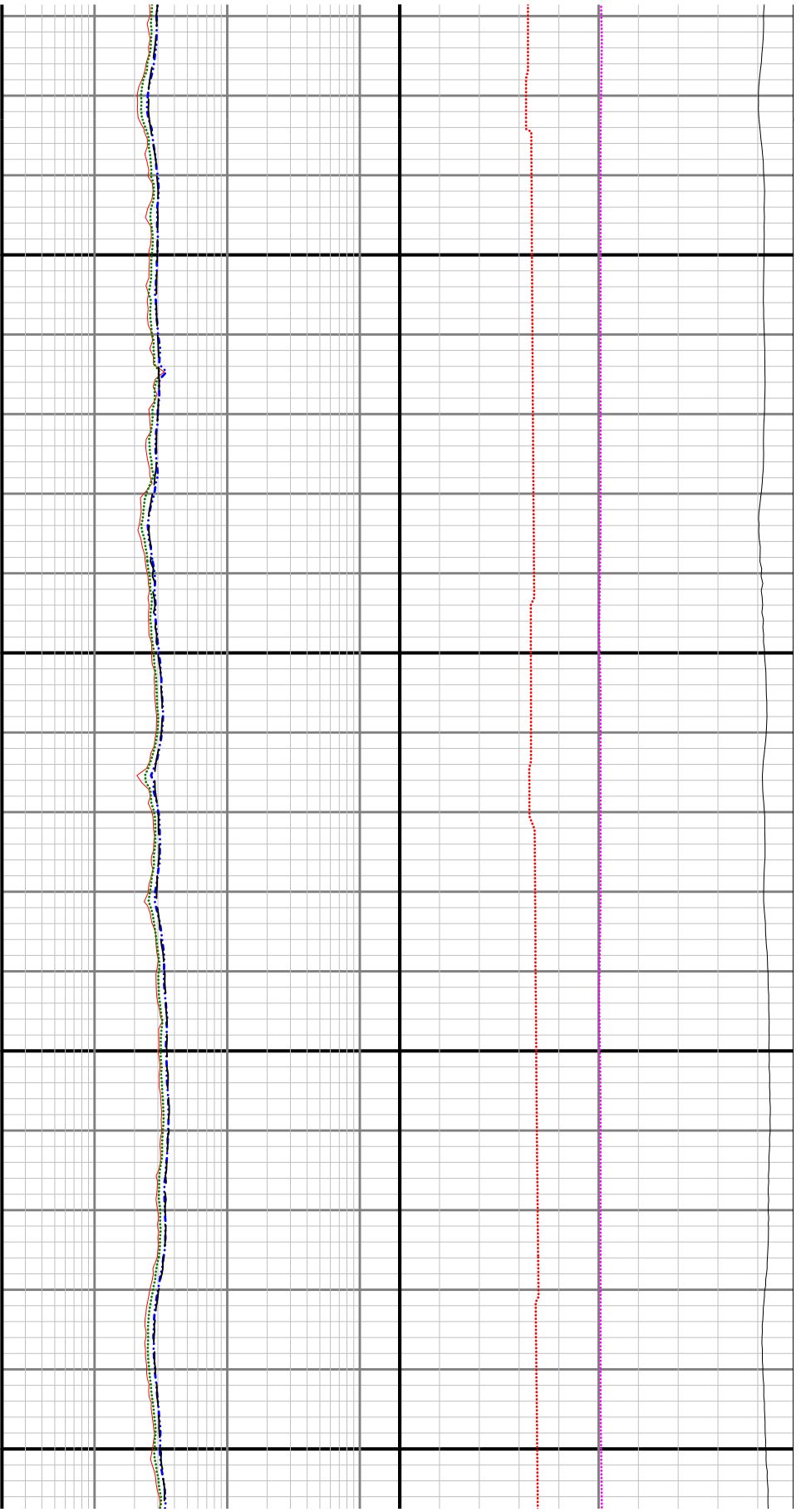


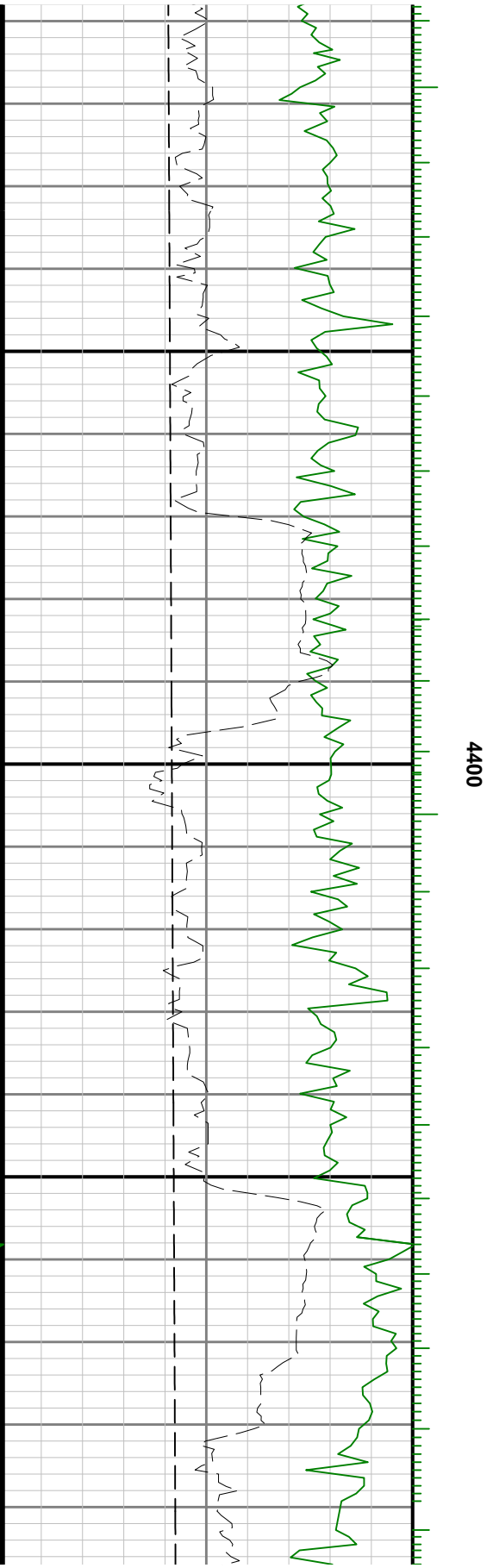
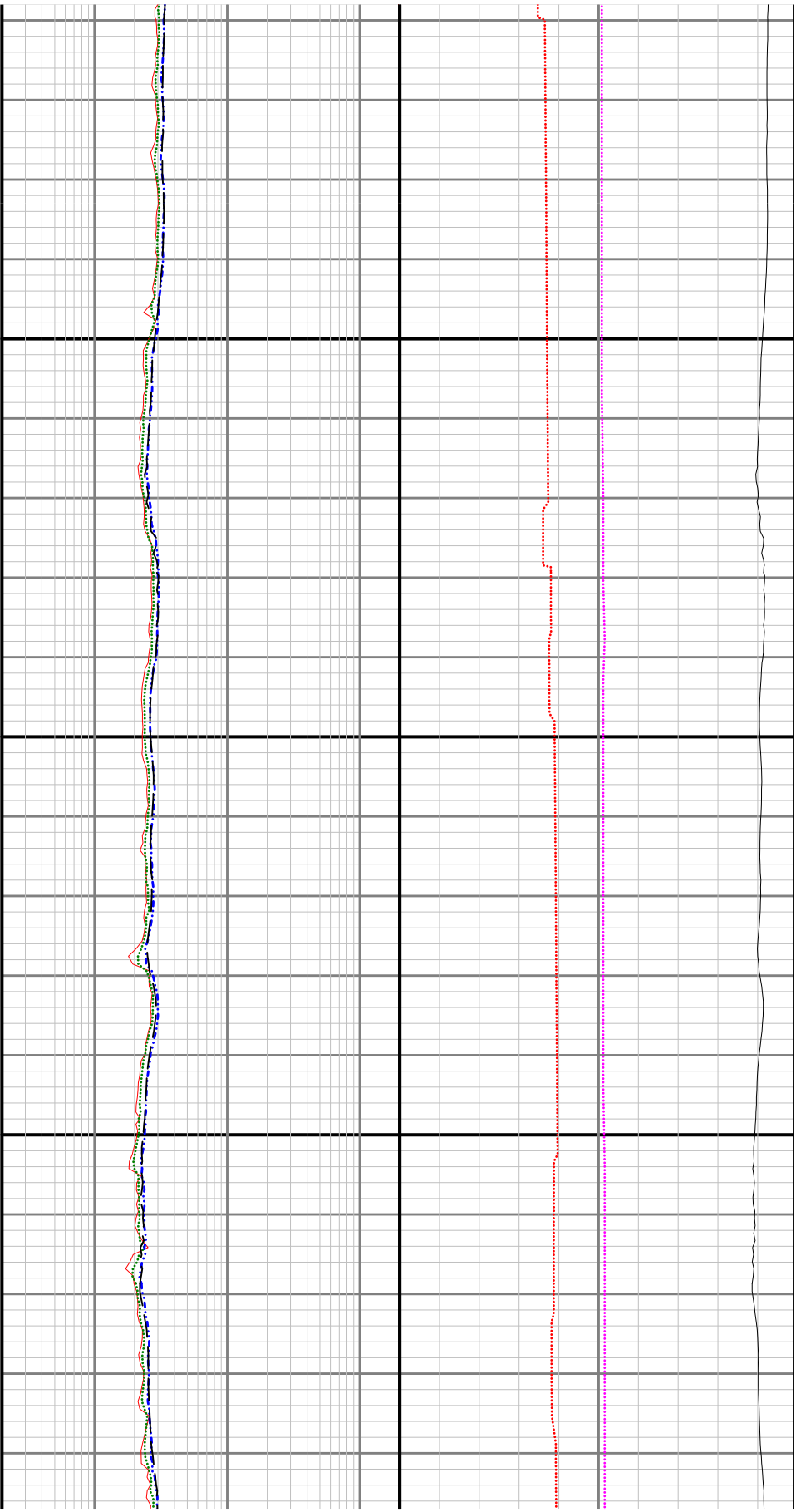


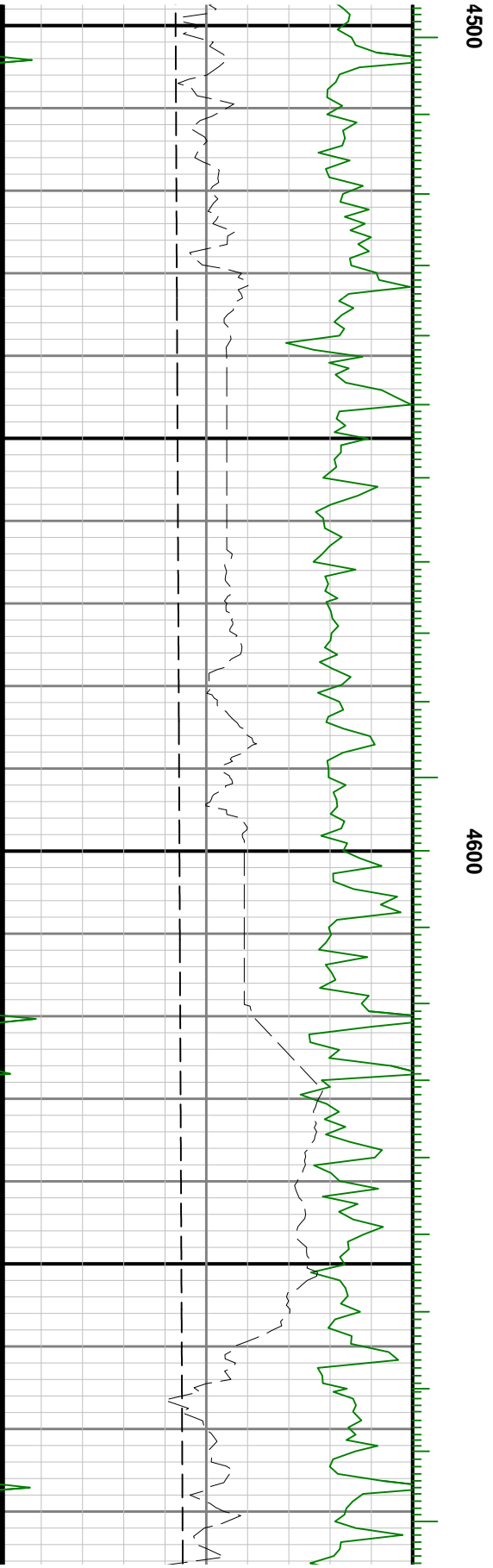
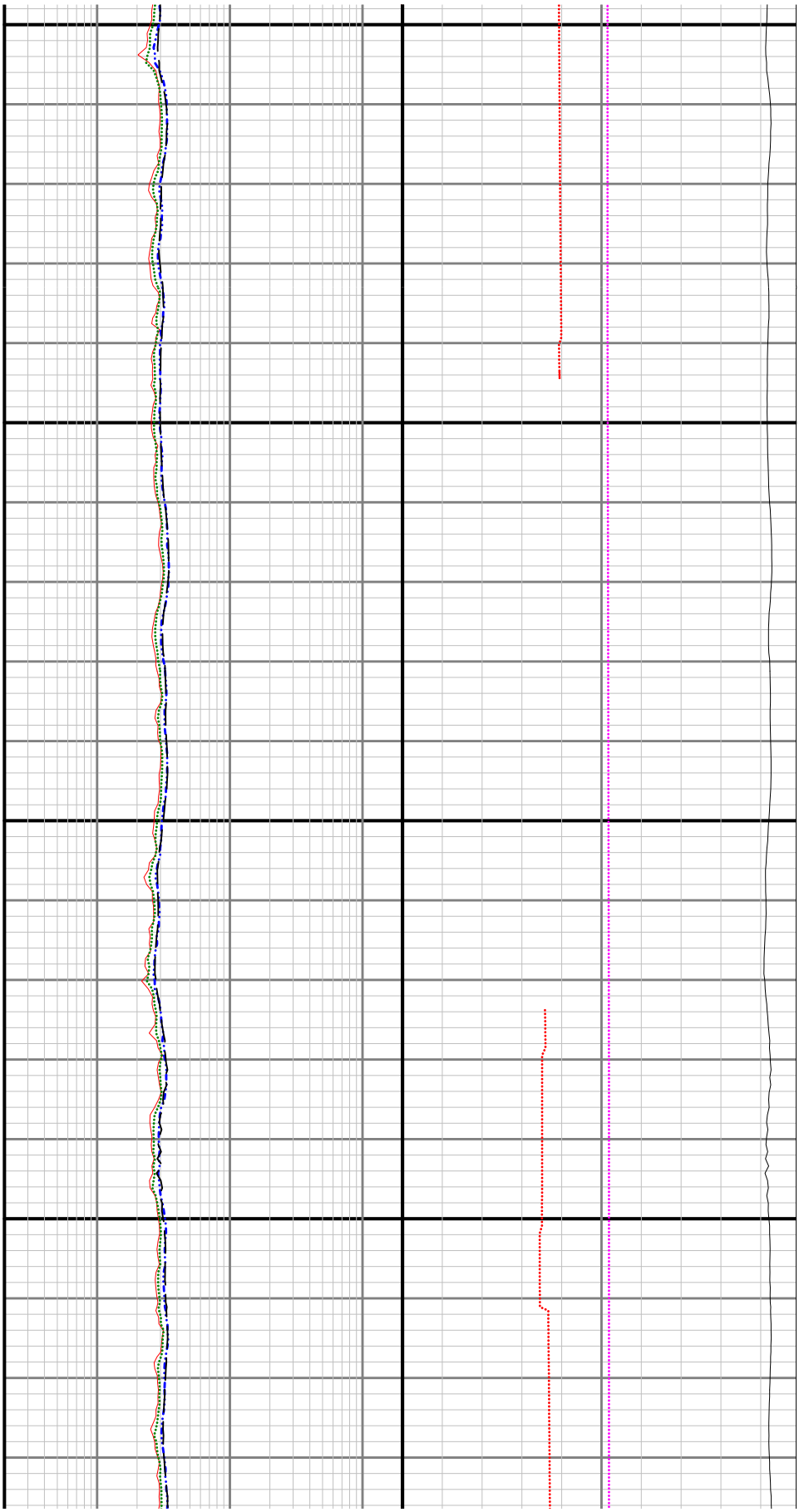


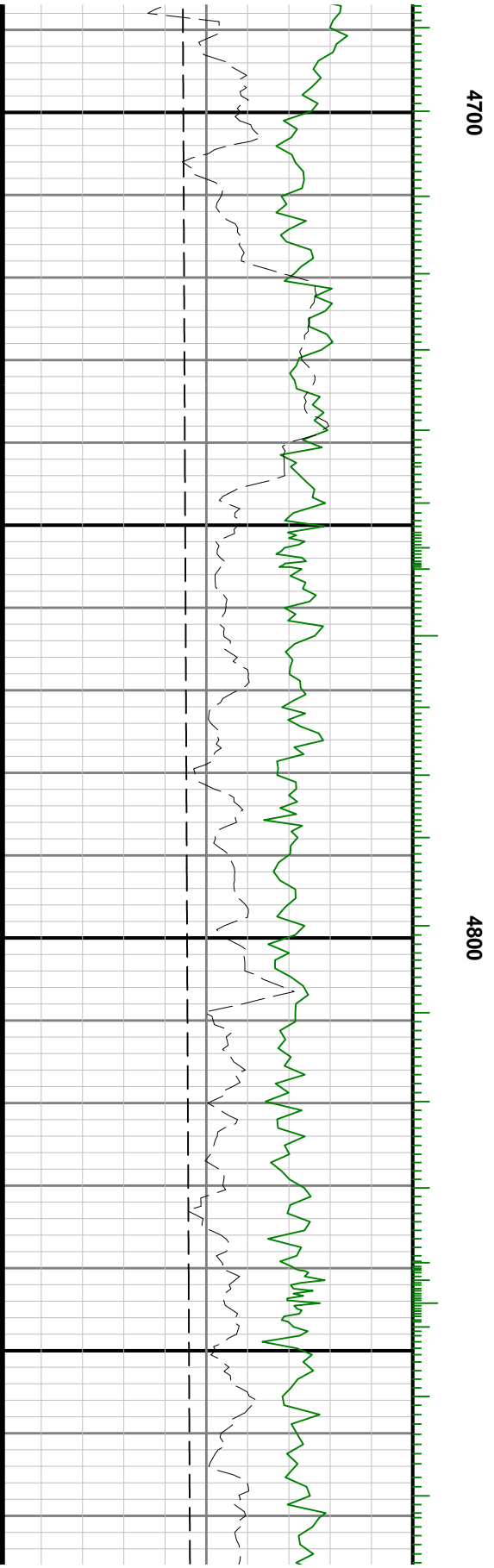
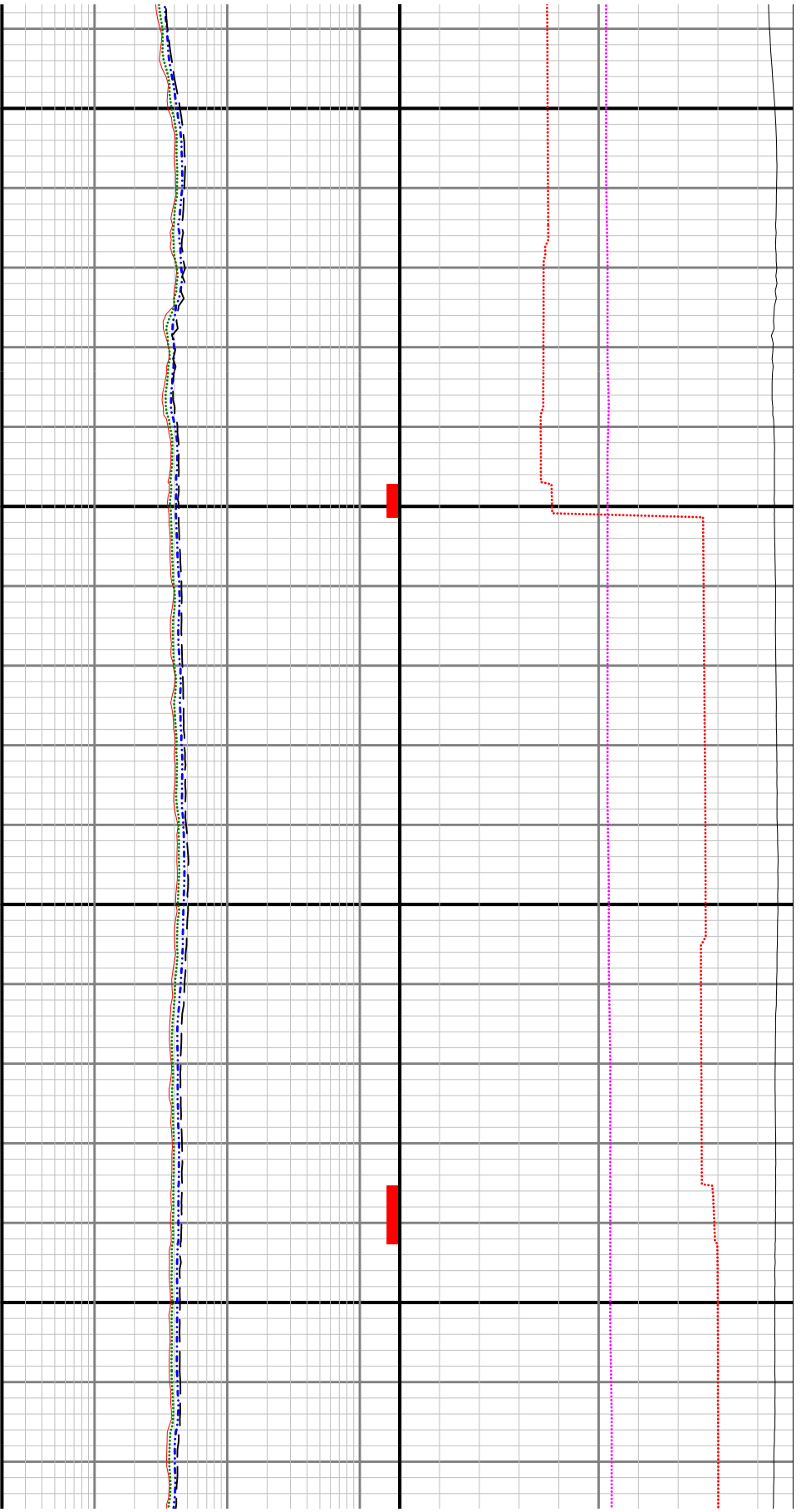


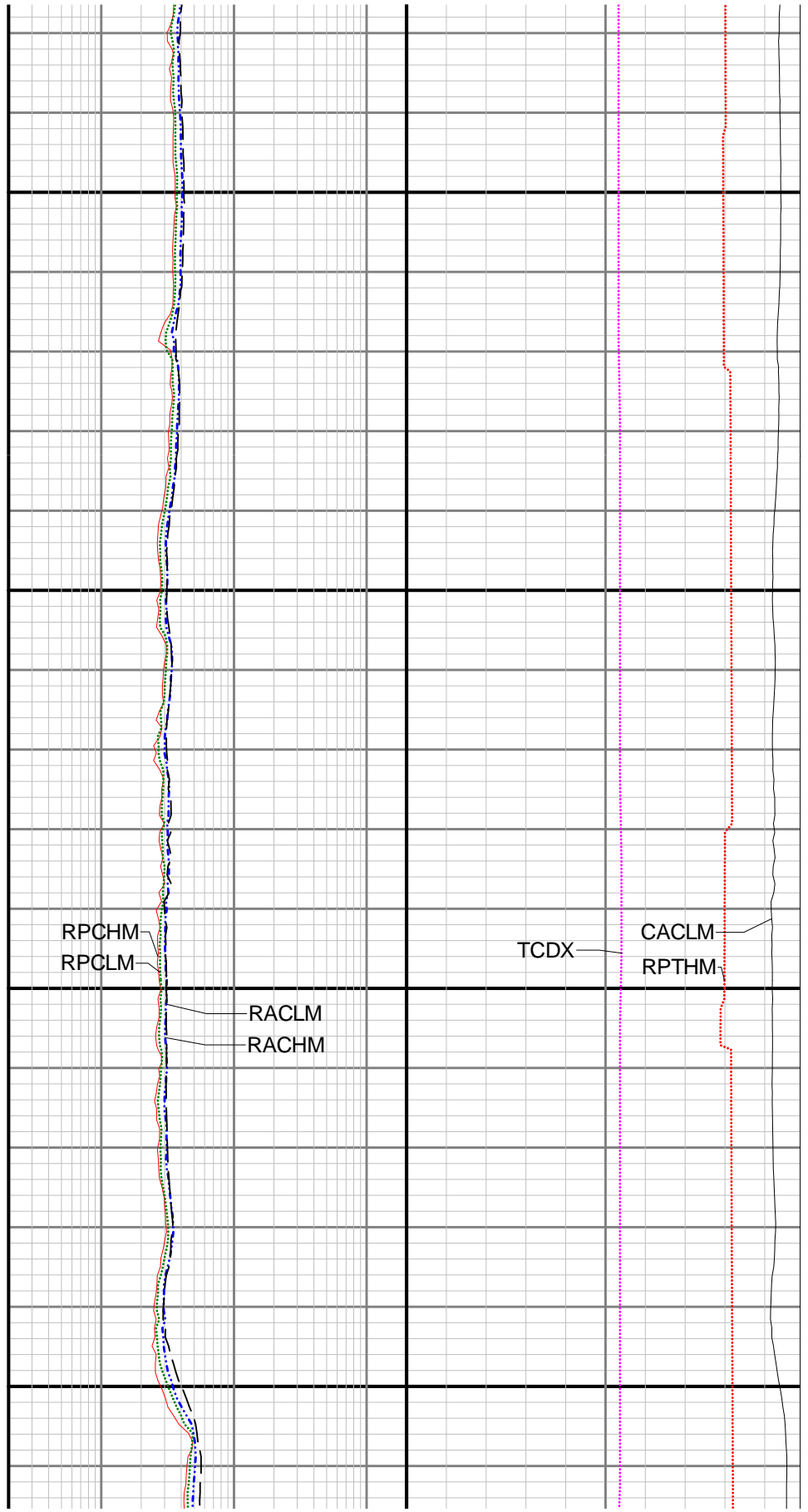
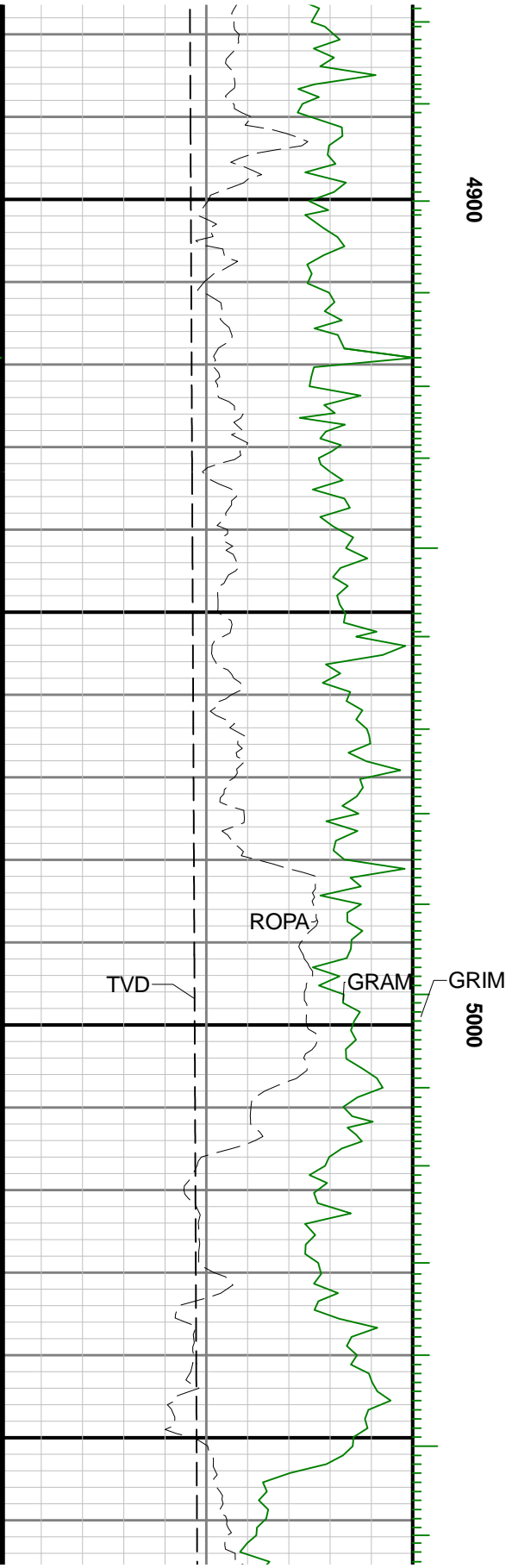


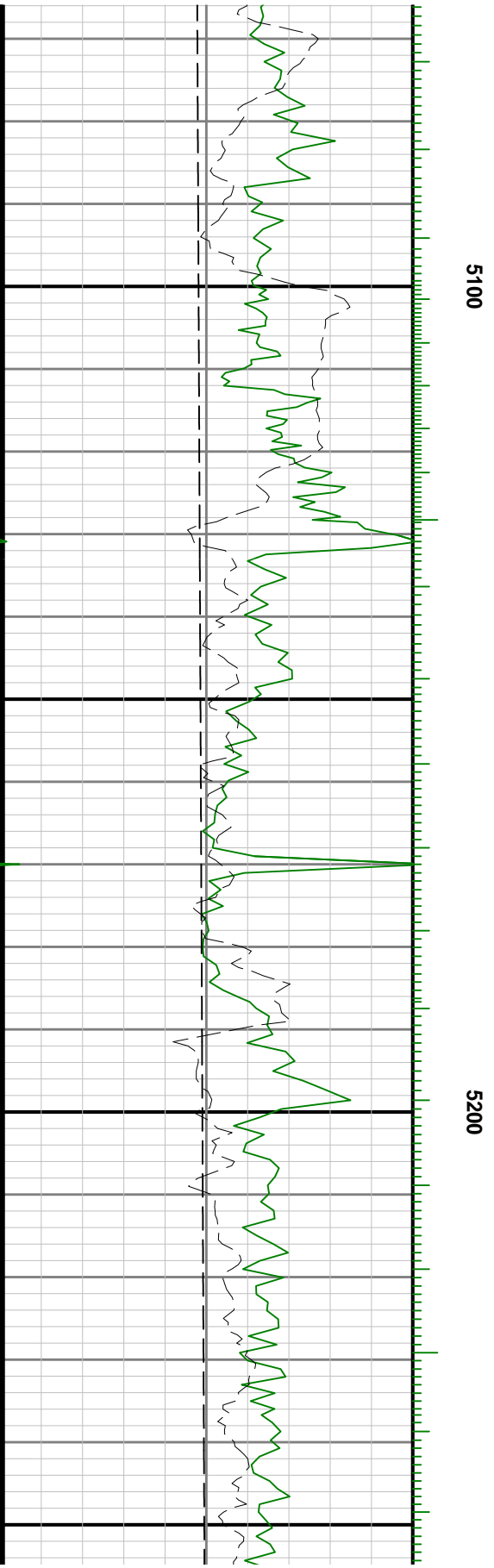
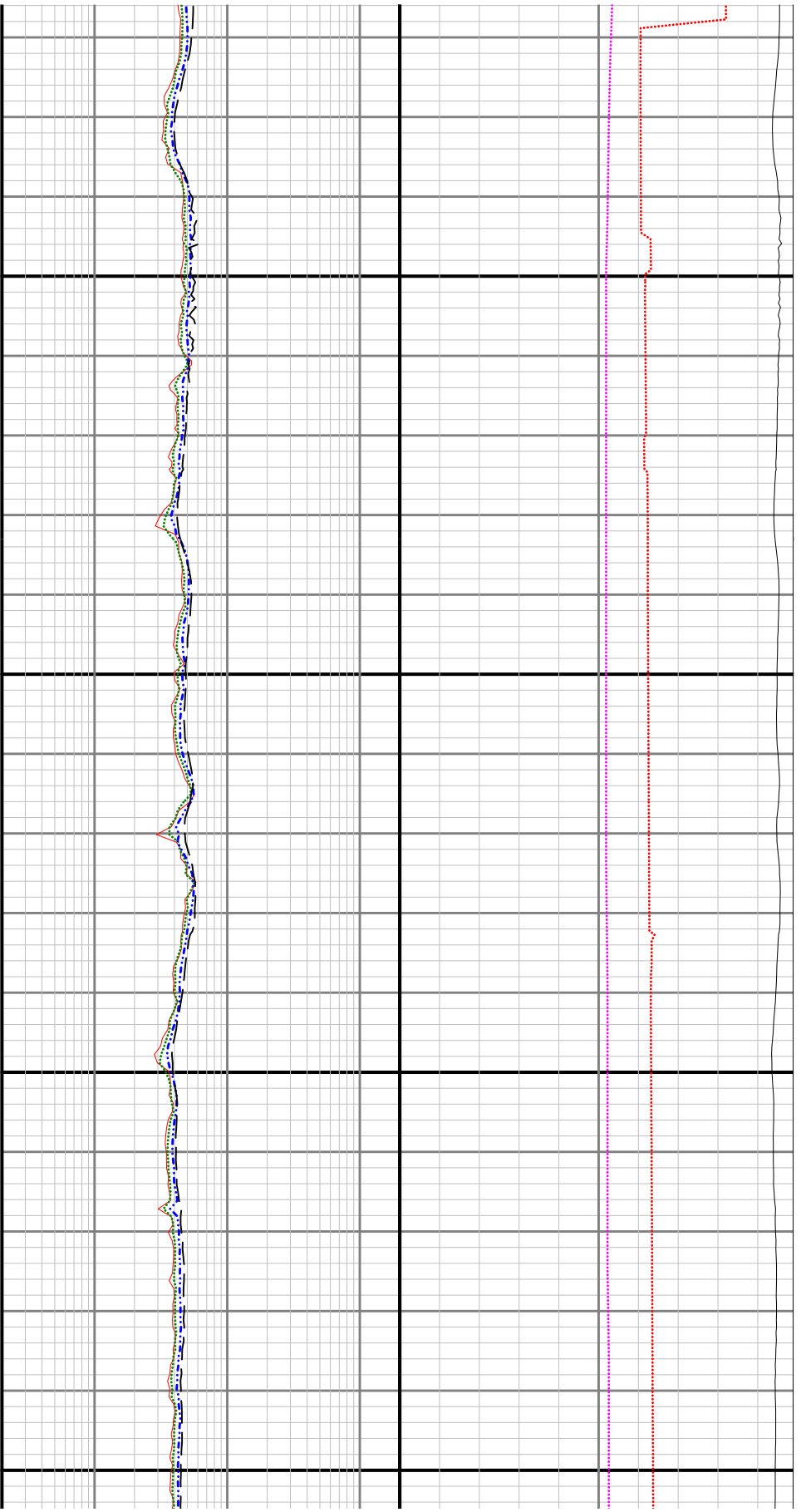


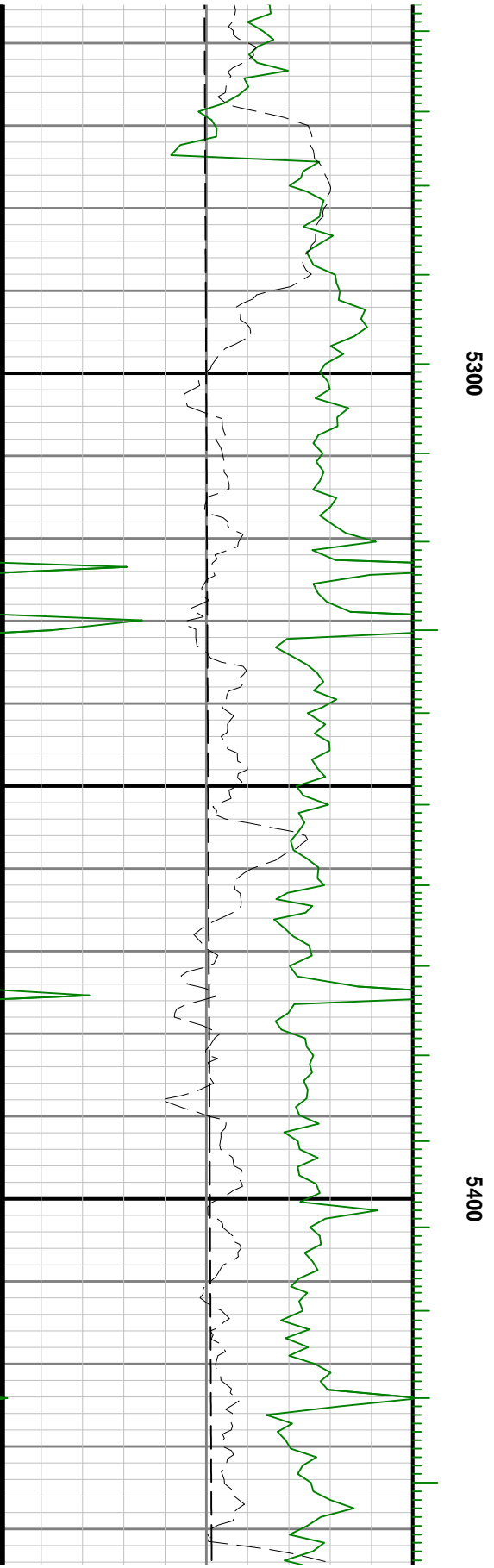
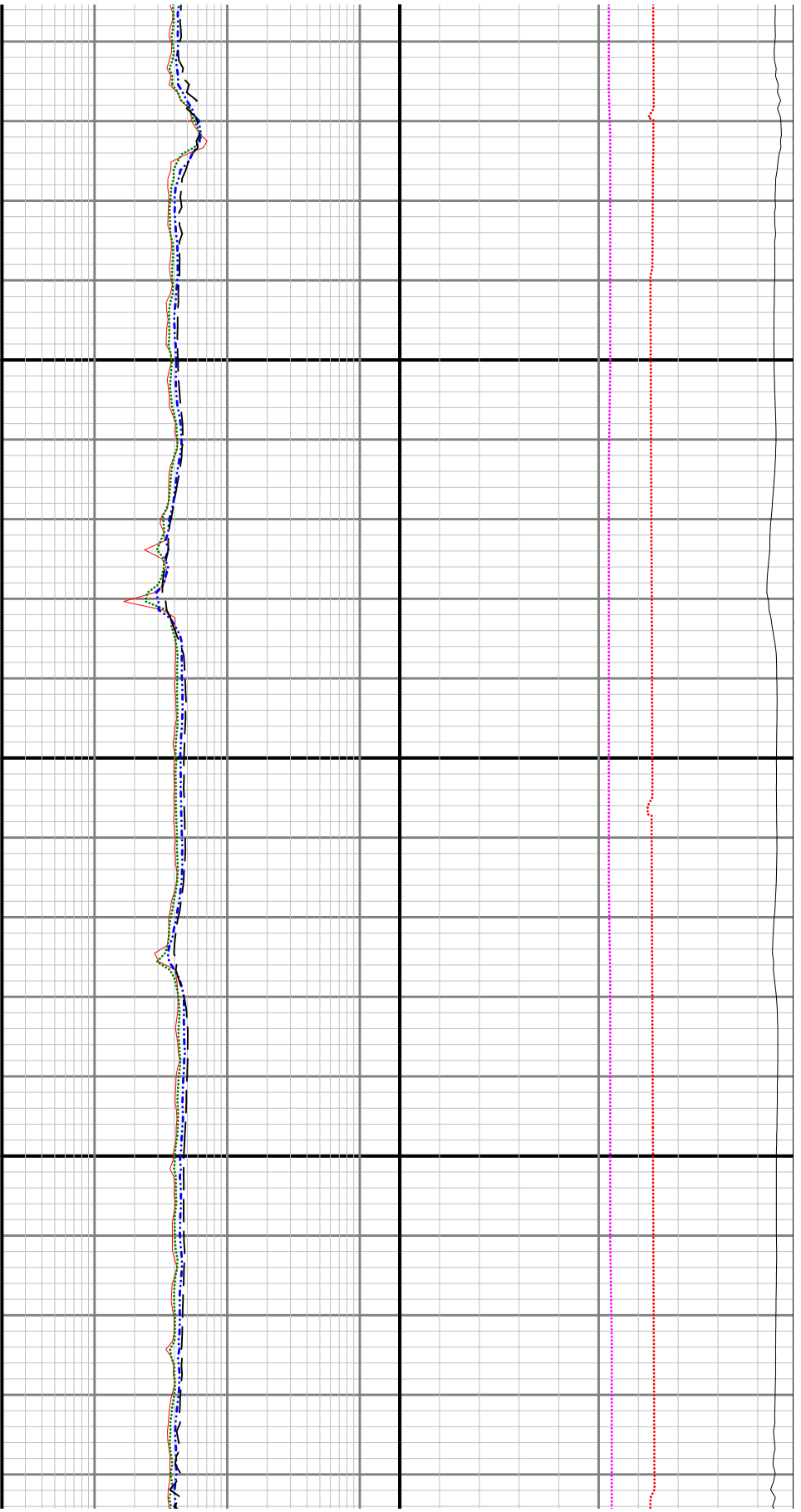


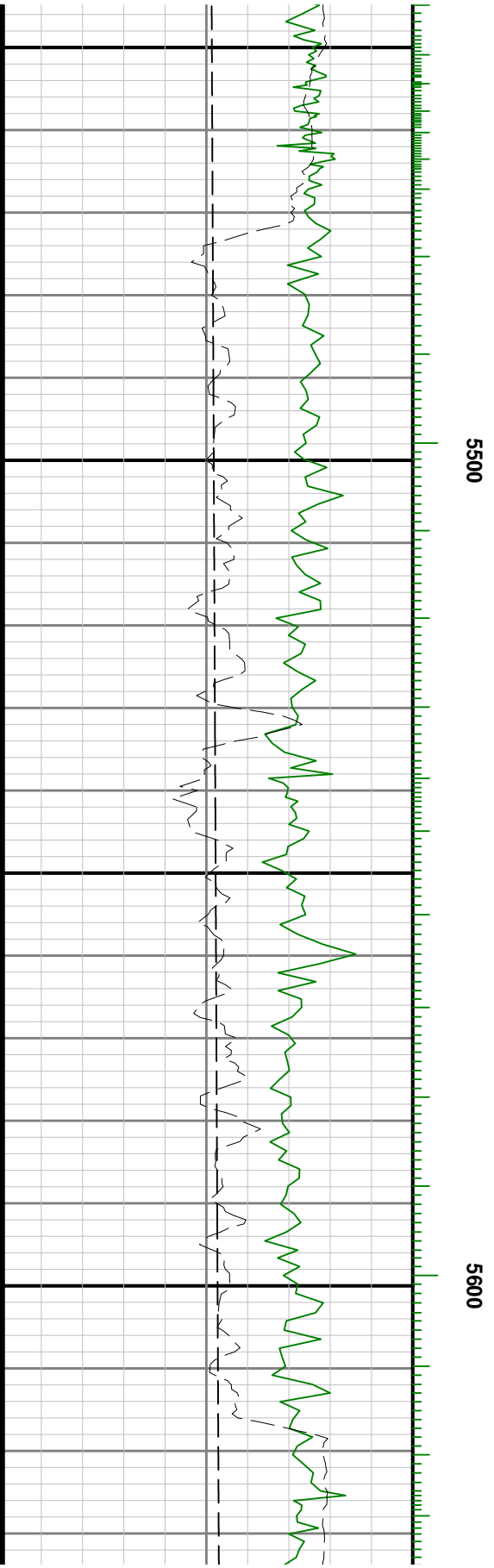
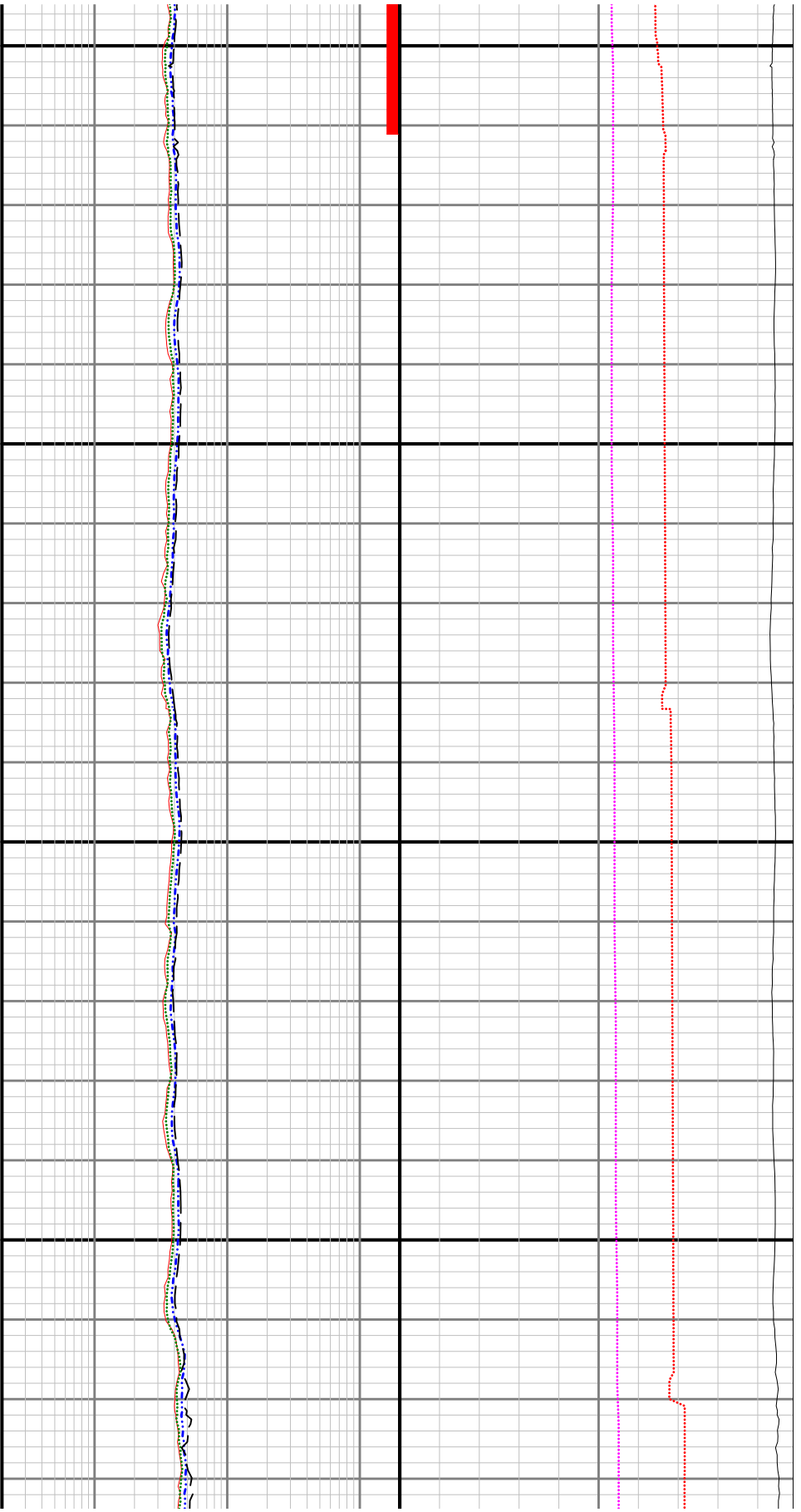


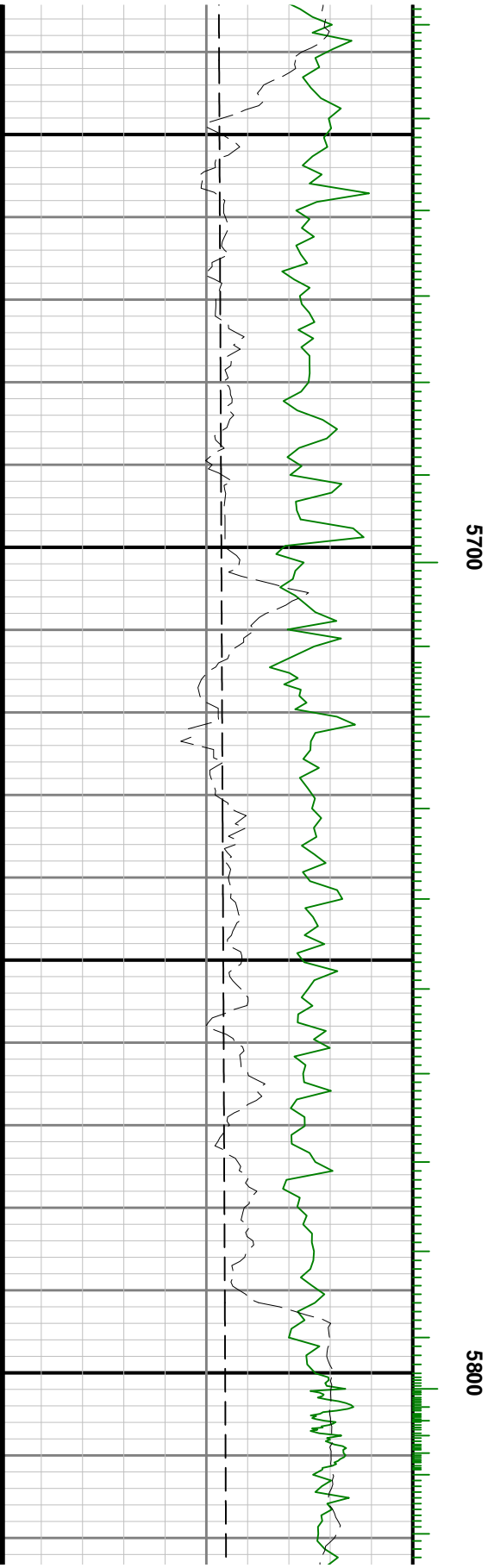
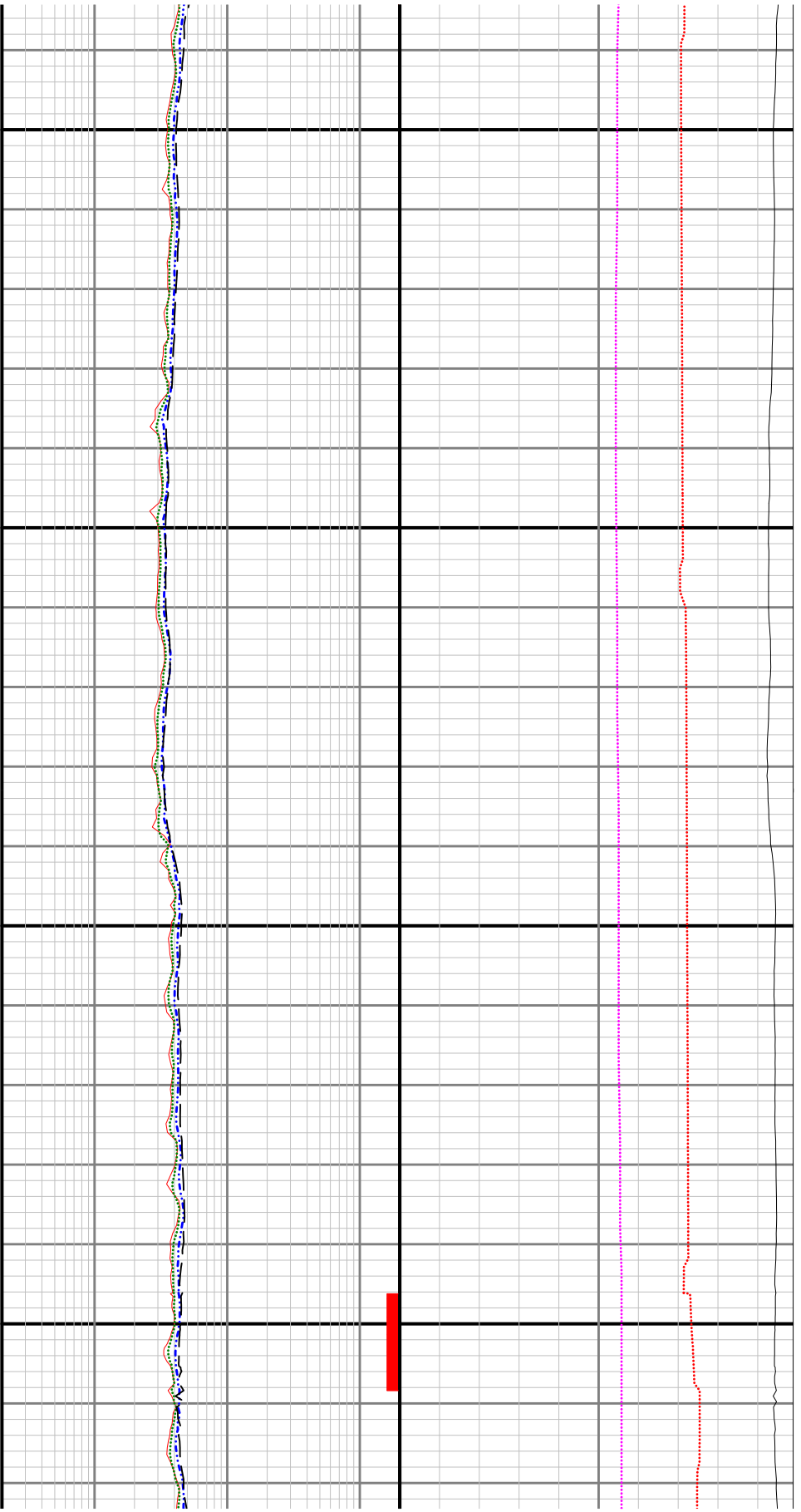


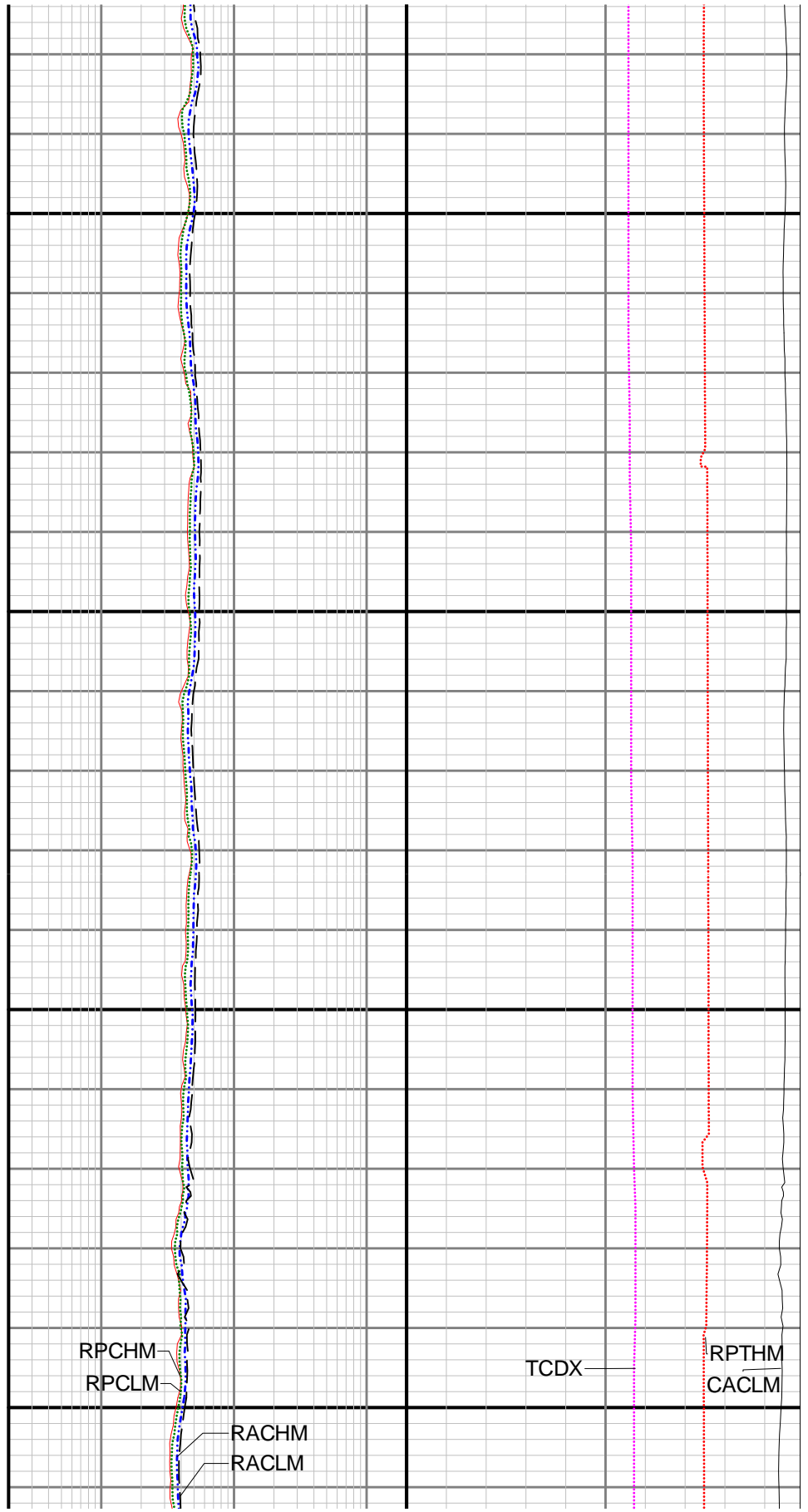
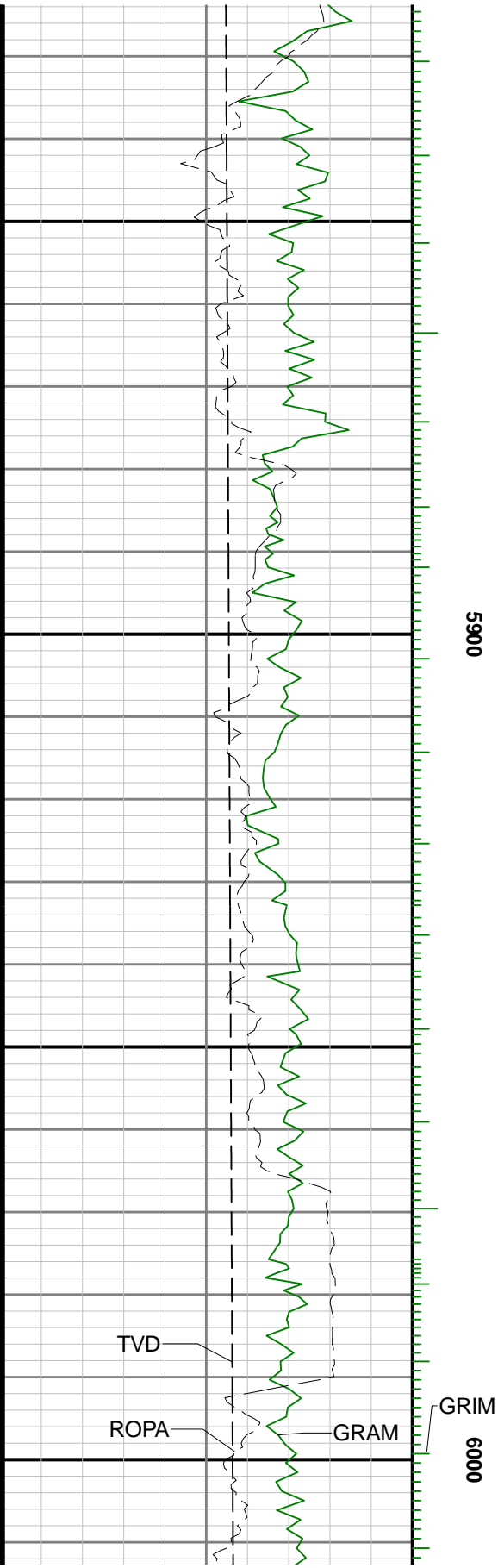


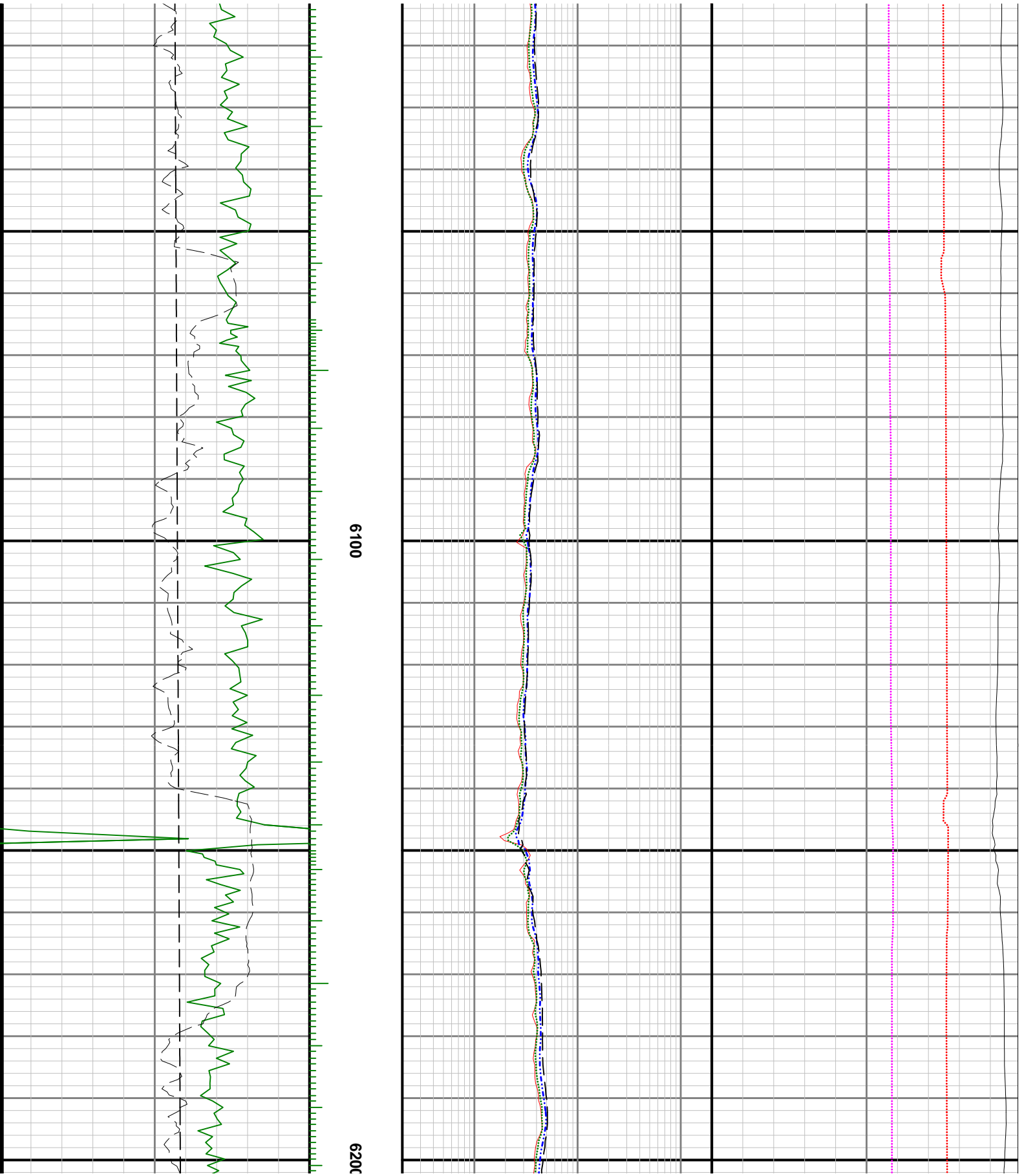






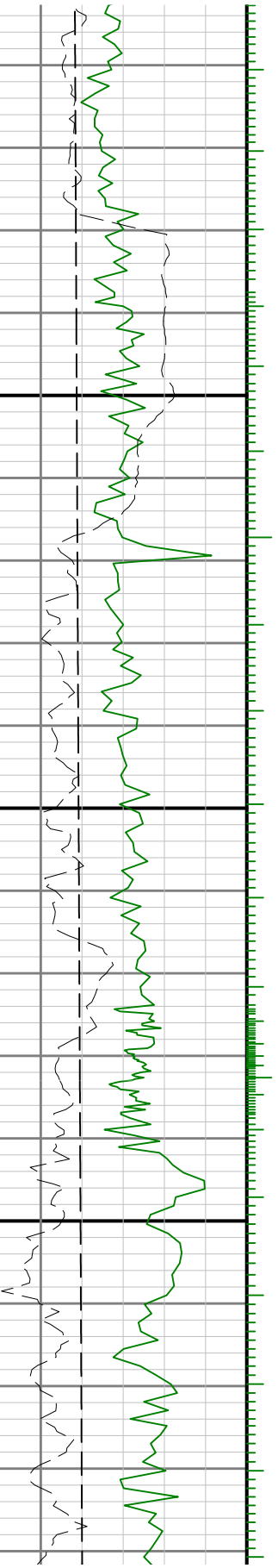


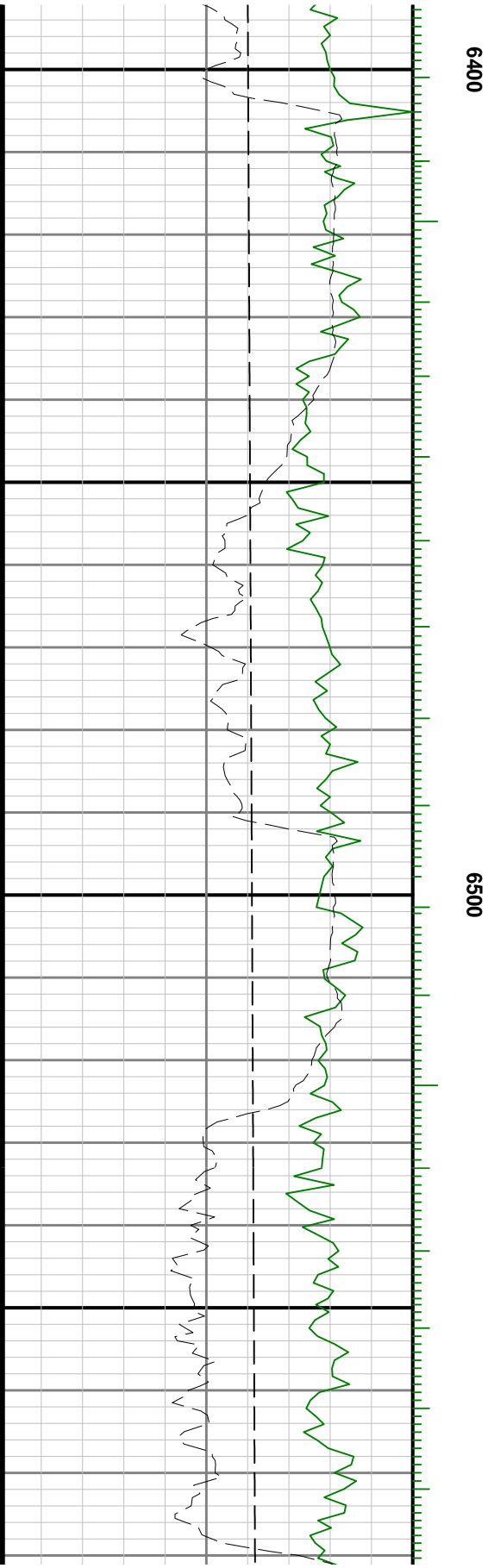
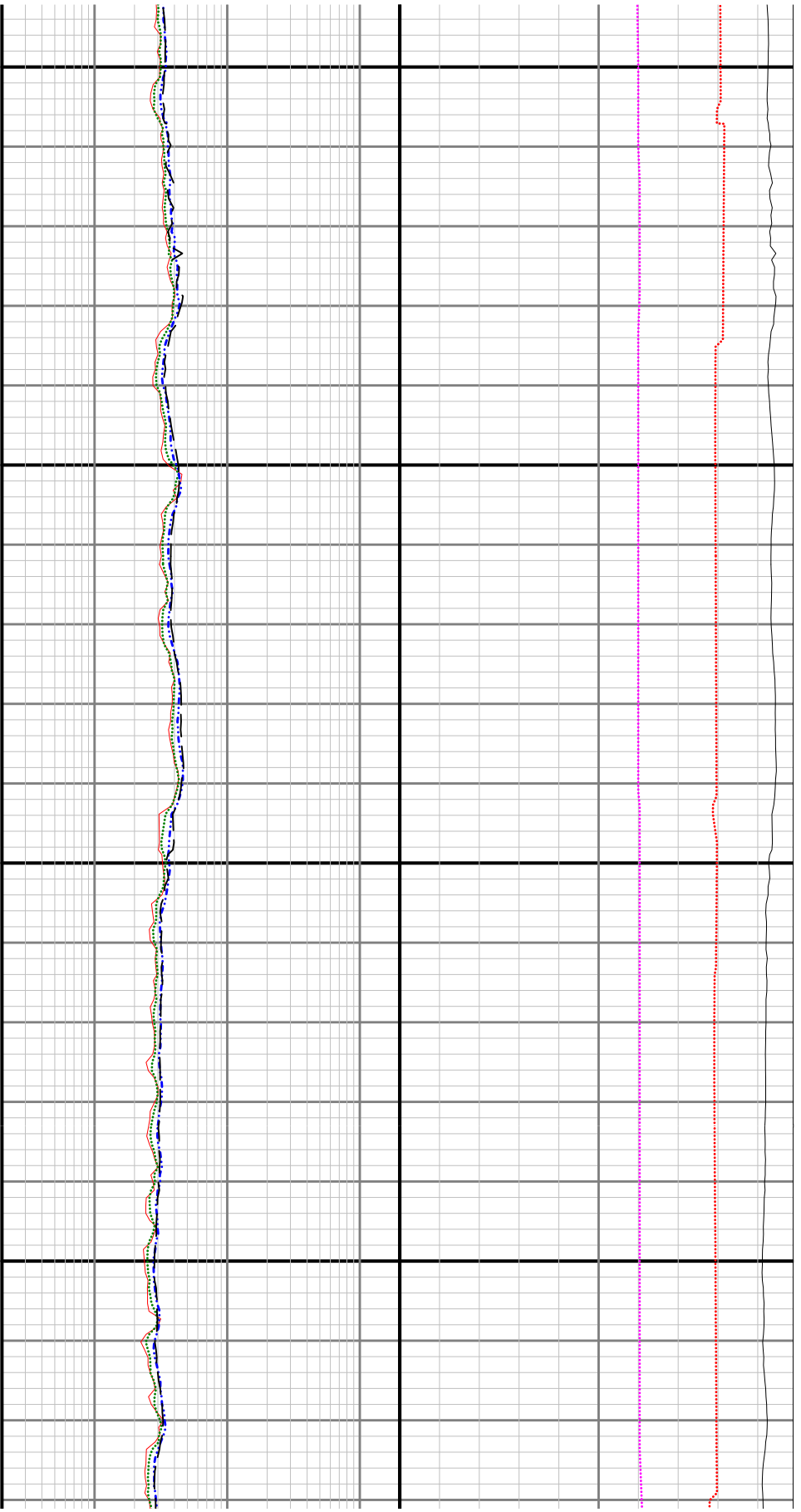


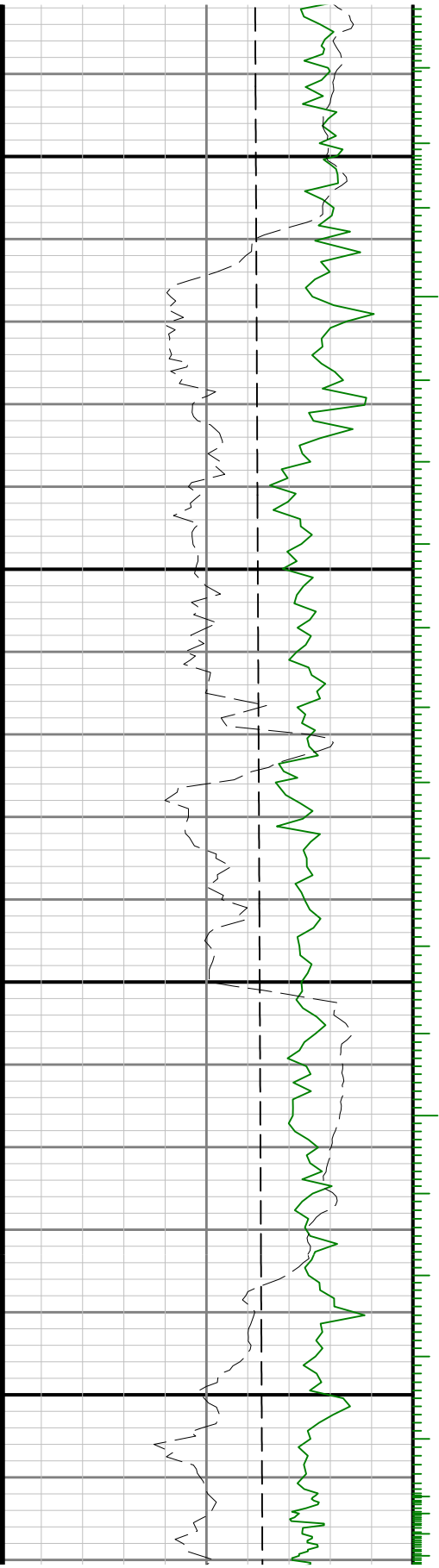




6300

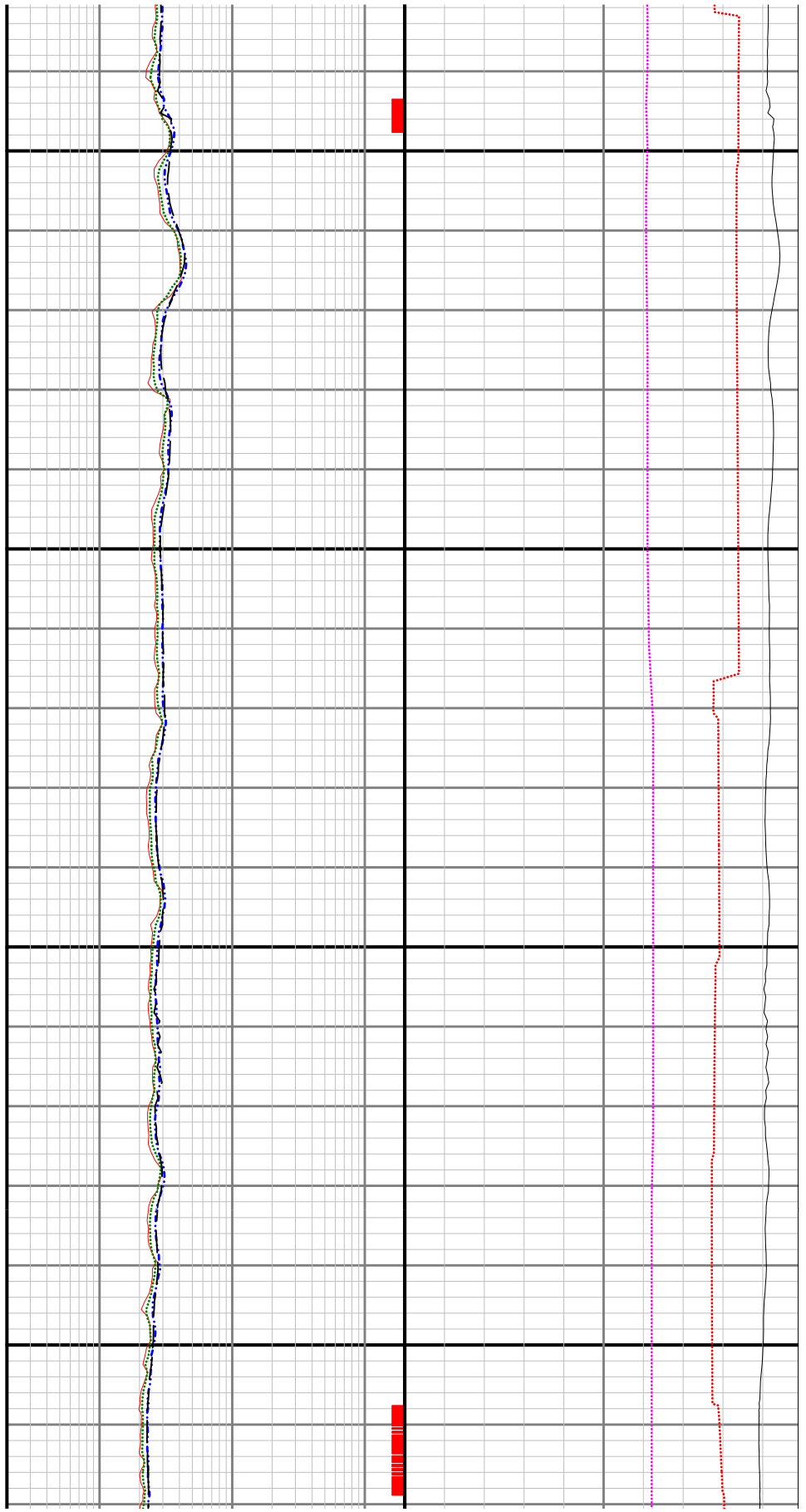


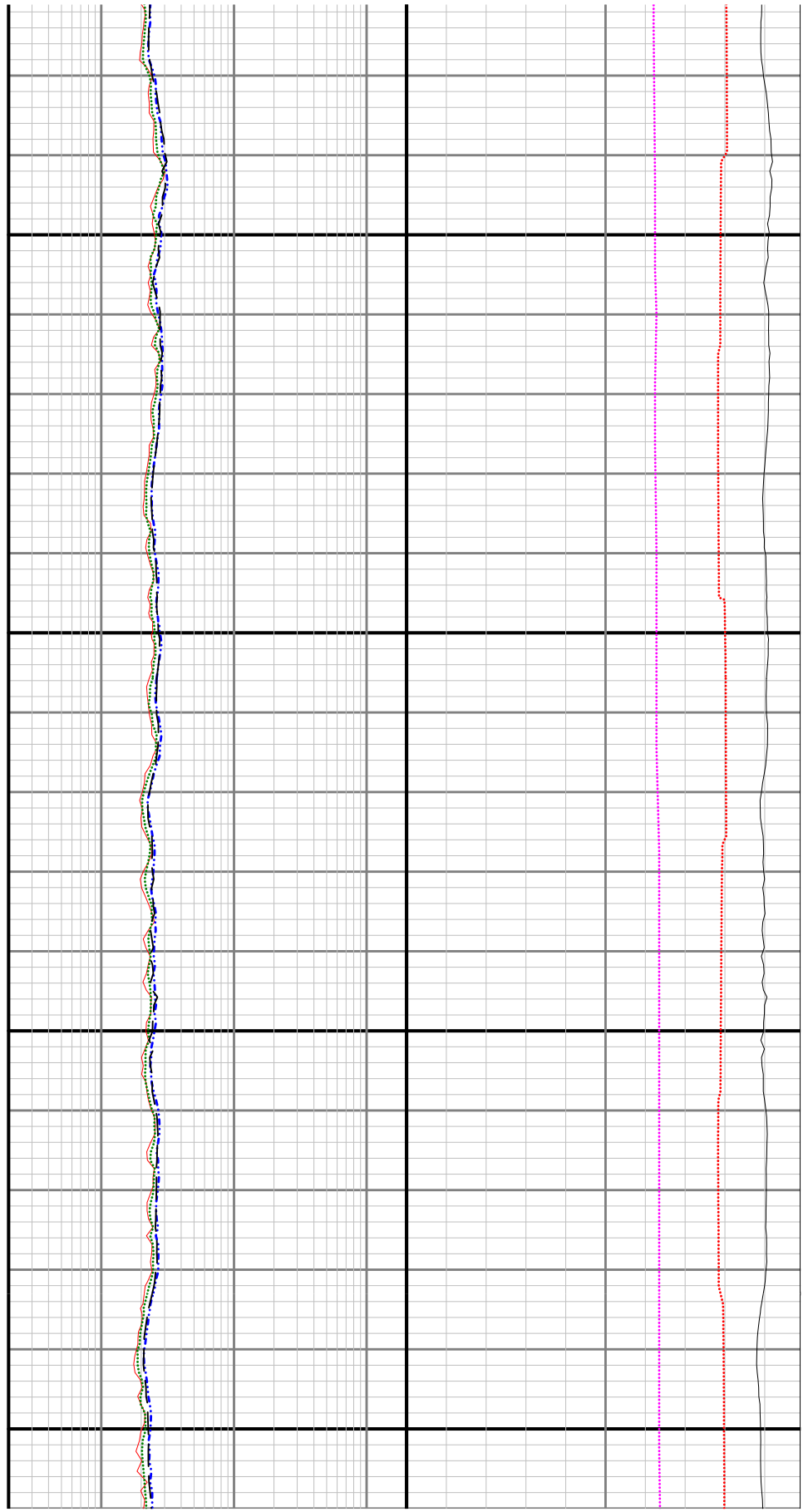
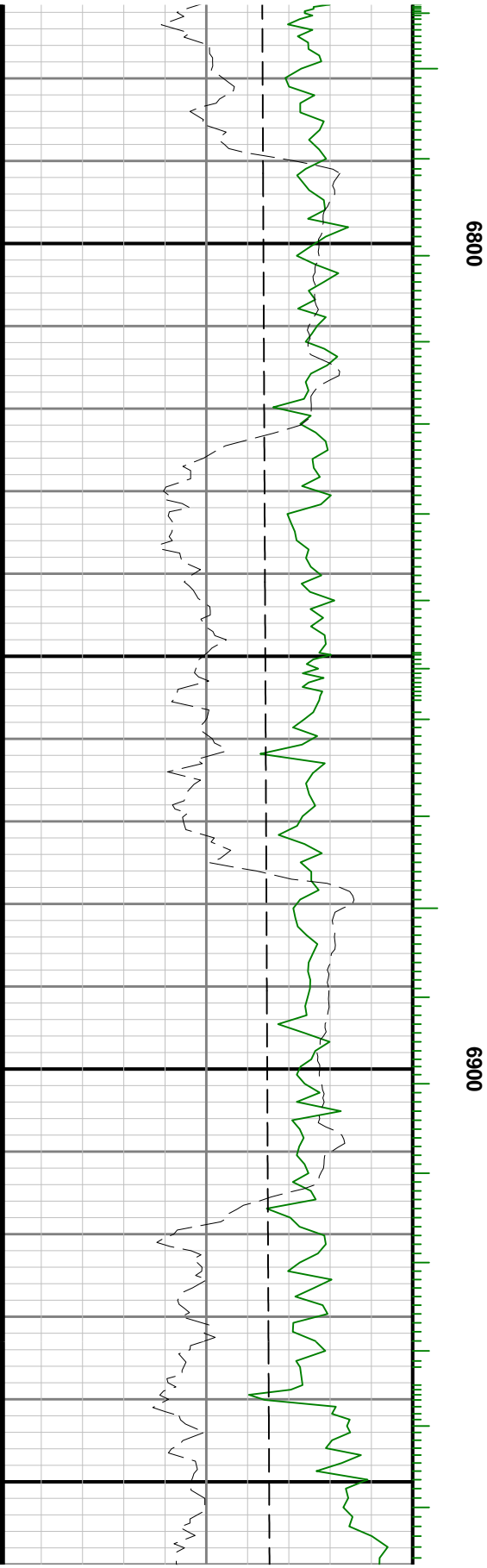


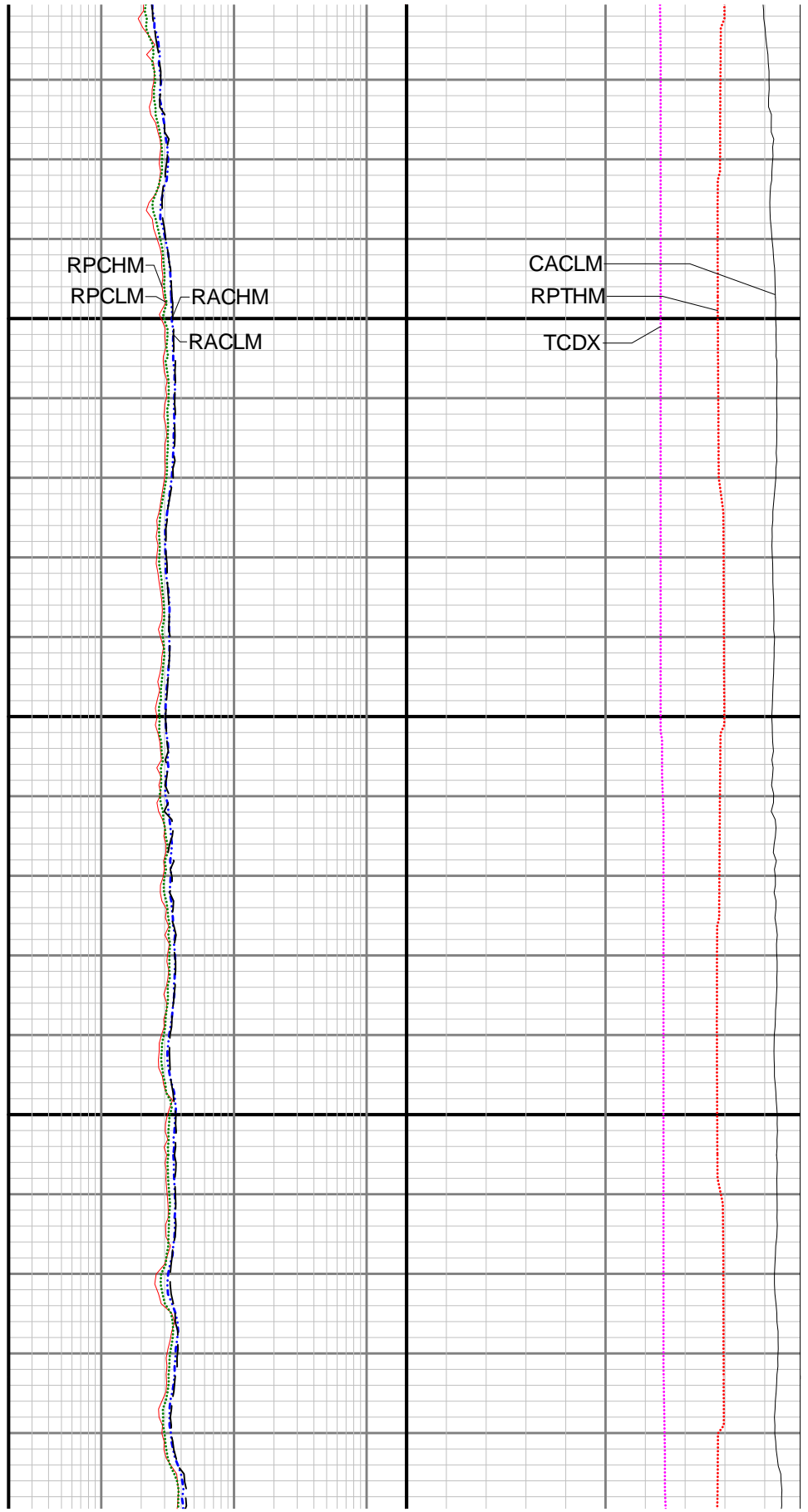
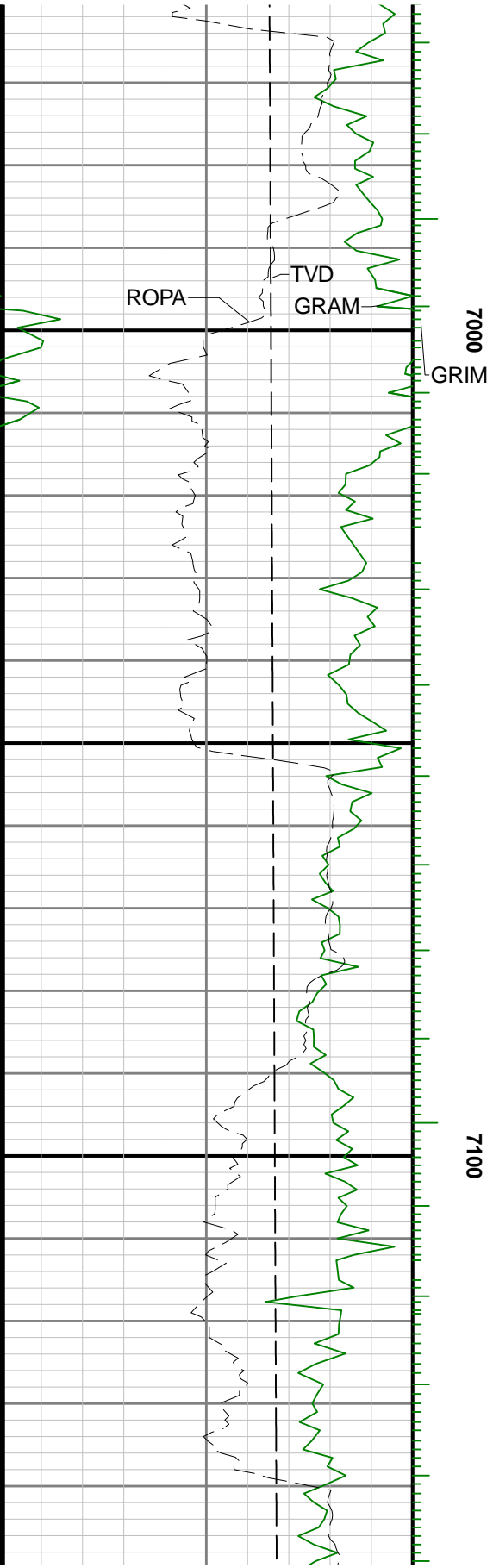


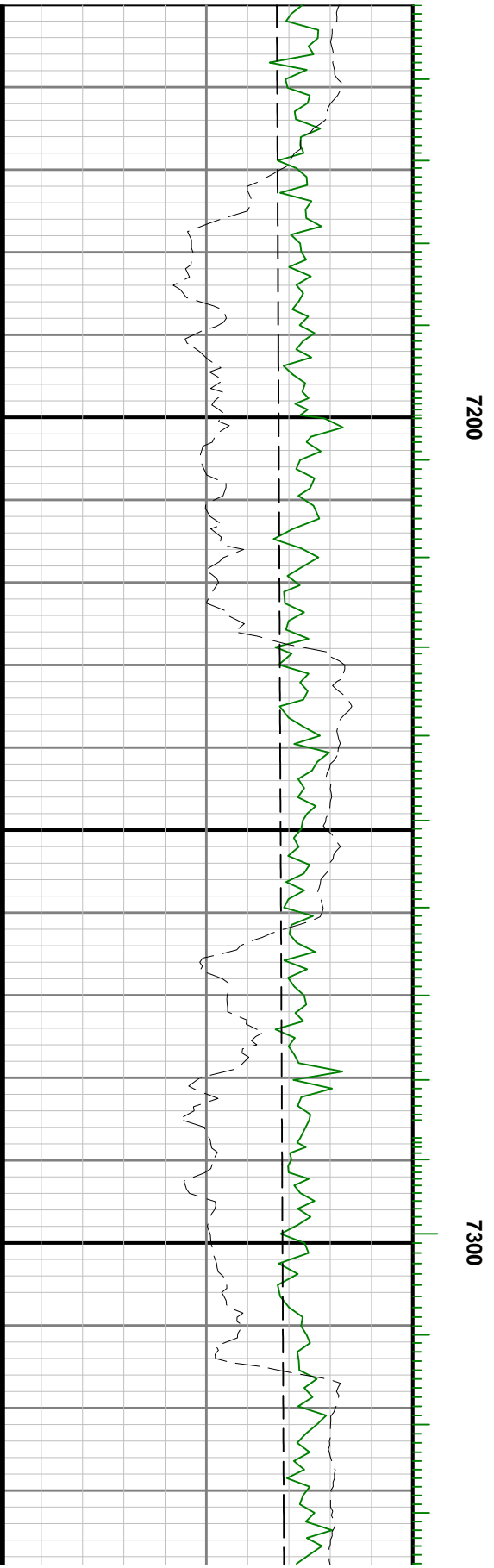
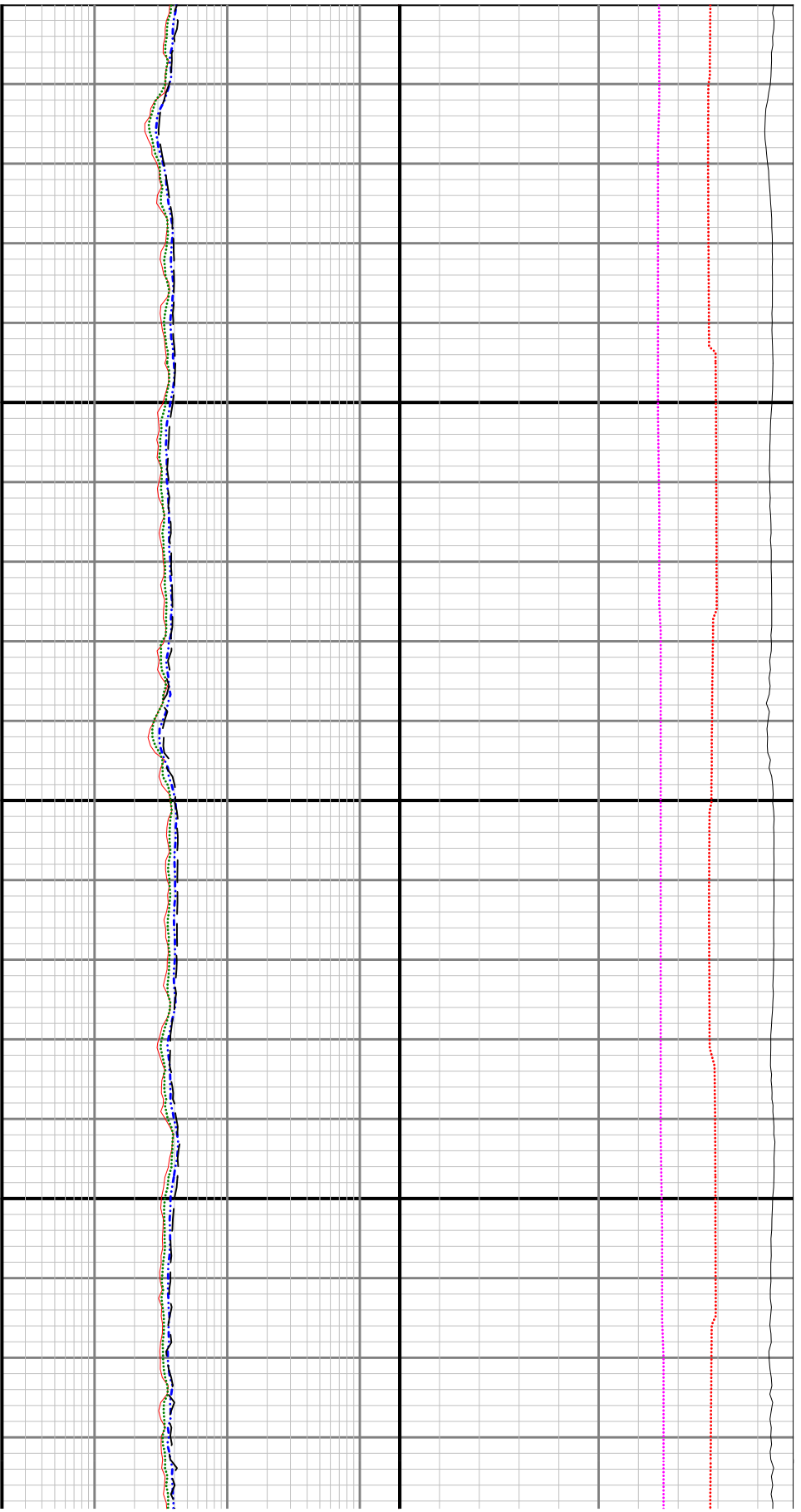
6700

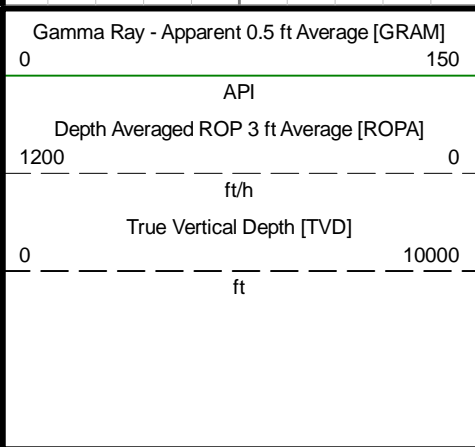
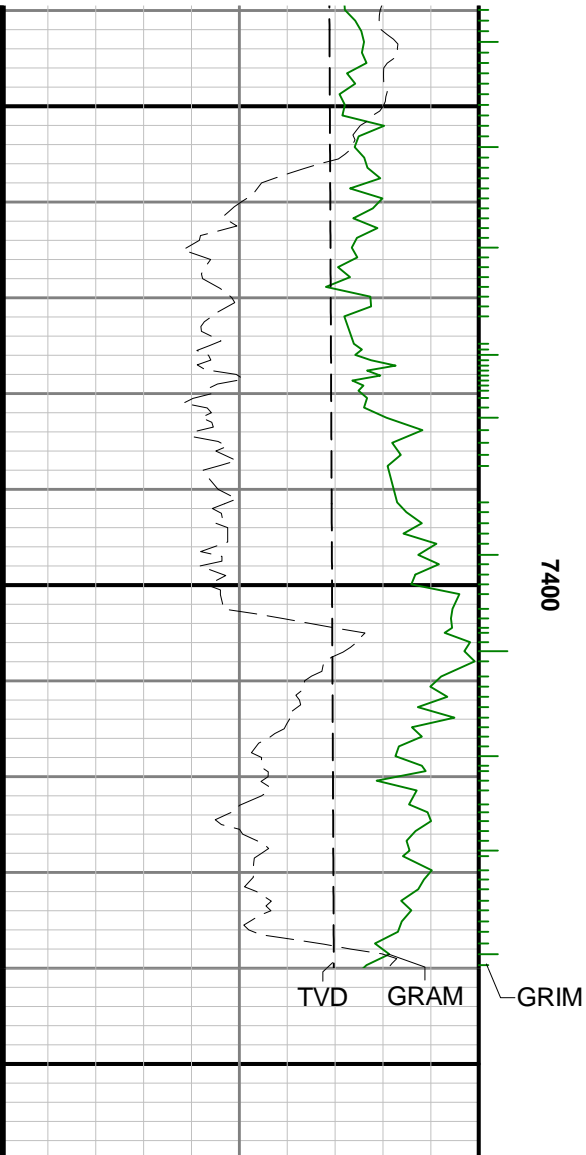
0099











MD 1:240 feet

