

Inspection Photos

09/09/2019

Operator: FOUNDATION ENERGY
MANAGEMENT LLC # 10112

Location ID: 323461

Weld County, CO

Aaron Trujillo
NE Reclamation Specialist
COGCC

Inspection Photos

Operator Name: FOUNDATION ENERGY MANAGEMENT LLC # 10112

Location ID: 323461



Photo 1: Photo taken from the southeast end of the location, facing west. Photo shows location does not appear to have been cross-ripped in accordance with 1000 series rules; location appears to have been ripped once, in one direction.



Photo 2: Photo taken from the southwest end of the location, facing east. See comments under photo 1.

Inspection Photos

Operator Name: FOUNDATION ENERGY MANAGEMENT LLC # 10112

Location ID: 323461



Photo 3: Photo taken from the northwest end of the location, facing east. See comments under photo 1.



Photo 4: Photo taken from the southeast corner of the location. Photo shows trash debris (cable) remaining on location.

Inspection Photos

Operator Name: FOUNDATION ENERGY MANAGEMENT LLC # 10112

Location ID: 323461



Photo 5: Photo shows utility poles remaining on the north end of the location. Surface equipment has not been removed.



Photo 6: Photo taken from the access road at $\sim 40.639486^\circ$ / -103.864066° . Photo shows a riser remaining along access road; Surface equipment has not been removed.



COLORADO
Oil & Gas Conservation
Commission
Department of Natural Resources

Inspection Photos

Operator Name: FOUNDATION ENERGY MANAGEMENT LLC # 10112

Location ID: 323461



Photo 7: Photo taken from the access road on the east end of the location. Photo shows *Tribulus terrestris* has established over a majority of the access road.



Photo 8: Photo taken from the access road. Photo shows erosion degradation observed on access road. Operator has not installed BMPs on location or access road.

Inspection Photos

Operator Name: FOUNDATION ENERGY MANAGEMENT LLC # 10112

Location ID: 323461



Photo 9: Additional photo of stormwater erosion degradation observed on access road.



Photo 10: Additional photo of stormwater erosion degradation observed on access road. Areas of gully erosion forming. Shovel for reference.

Inspection Photos

Operator Name: FOUNDATION ENERGY MANAGEMENT LLC # 10112

Location ID: 323461



Photo 11: Photo taken from the access road. Photo shows area where stormwater runoff and sediment transport from the disturbance areas are evident.

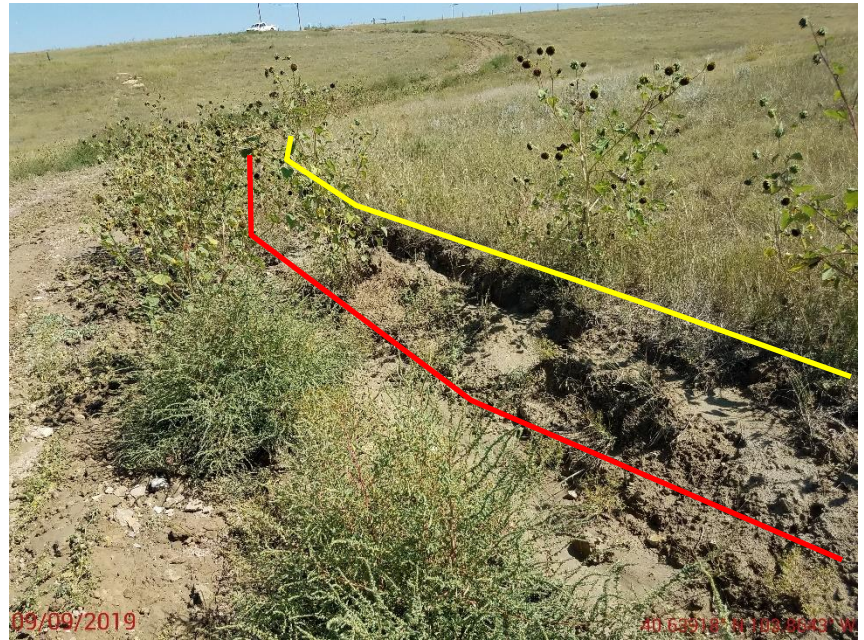


Photo 12: Photo taken from the access road, facing north. Photo shows access road (red) has not been recontoured or graded to that of the adjacent lands (yellow).

Inspection Photos

Operator Name: FOUNDATION ENERGY MANAGEMENT LLC # 10112

Location ID: 323461



Photo 13: Photo taken from the access road, facing south. Photo shows access road (red) has not been recontoured or graded to that of the adjacent lands (yellow).



Photo 14: Photo taken from the access road. Photo shows Tribulus terrestris has established over a majority of the access road.

Inspection Photos

Operator Name: FOUNDATION ENERGY MANAGEMENT LLC # 10112

Location ID: 323461



Photo 15: Additional photo of stormwater erosion degradation observed on access road. Areas of gully erosion forming. Photo also shows access road has not been recontoured or graded to that of the adjacent lands.

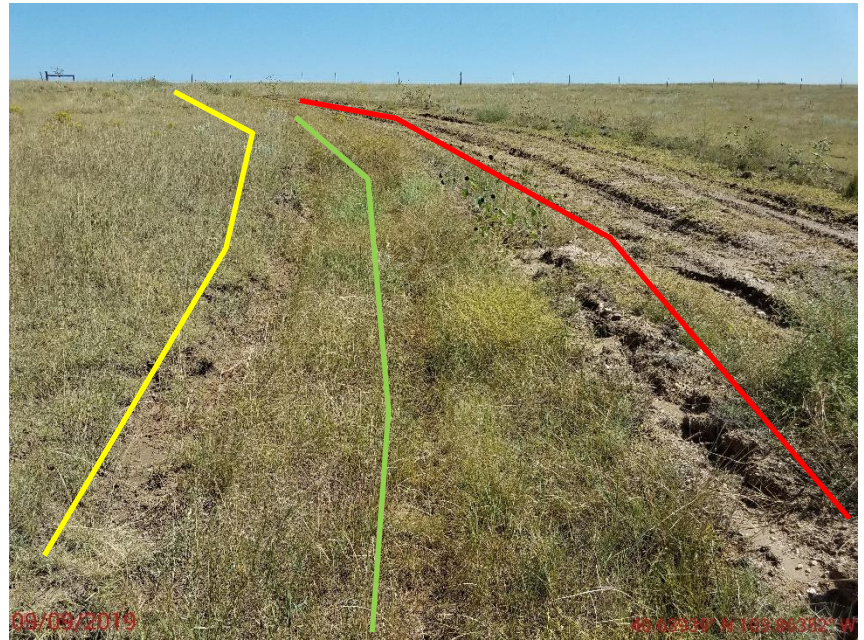


Photo 16: Photo taken from the access road, facing east. Photo shows access road (red) has not been recontoured or graded to that of the adjacent lands (yellow). Ditch (green) evident.

Inspection Photos

Operator Name: FOUNDATION ENERGY MANAGEMENT LLC # 10112

Location ID: 323461



Photo 17: Photo taken from where access road intersects with main road, facing south. Photo shows erosion degradation observed on access road. Operator has not installed BMPs on location or access road.



Photo 18: Photo taken from where access road intersects with main road, facing south. Photo shows erosion degradation observed on access road. Operator has not installed BMPs on location or access road.