

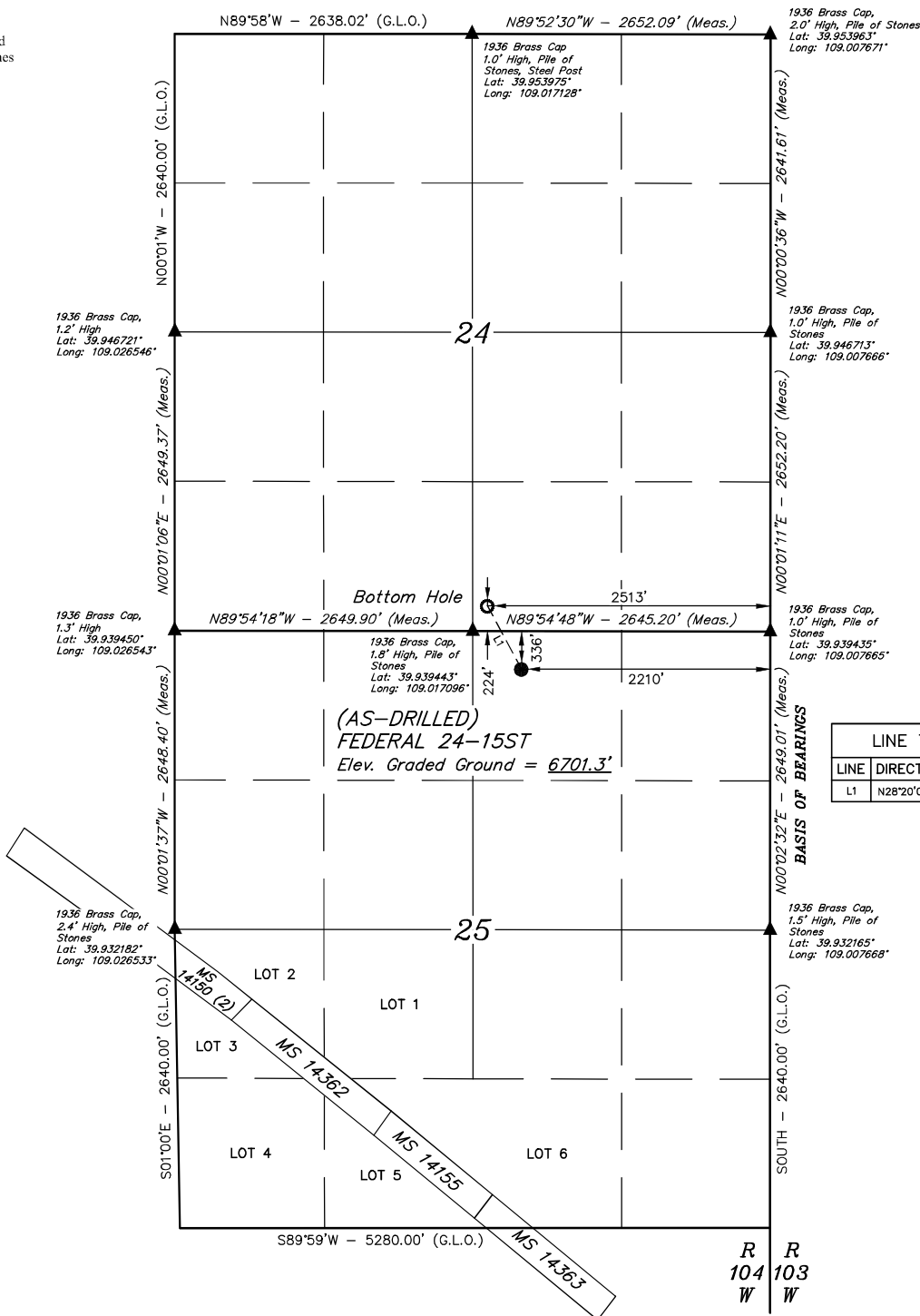
LEGEND:

- = SURFACE LOCATION.
- = BOTTOM HOLE.
- ▲ = SECTION CORNERS LOCATED. (NAD 83)

NOTE:

Distances referenced on plat to section lines are perpendicular.

T1S, R104W, 6th P.M.



LINE TABLE		
LINE	DIRECTION	LENGTH
L1	N28°20'05"W	637.01'



NAD 83 (SURFACE LOCATION)	NAD 83 (BOTTOM HOLE)
LATITUDE = 39°56'18.66" (39.938518)	LATITUDE = 39°56'24.20" (39.940056)
LONGITUDE = 109°00'55.97" (109.015546)	LONGITUDE = 109°00'59.85" (109.016625)
NAD 27 (SURFACE LOCATION)	NAD 27 (BOTTOM HOLE)
LATITUDE = 39°56'18.77" (39.938548)	LATITUDE = 39°56'24.31" (39.940086)
LONGITUDE = 109°00'53.57" (109.014881)	LONGITUDE = 109°00'57.46" (109.015960)

BASIS OF BEARINGS
BEARINGS ARE A BASED ASSUMPTION THAT THE EAST LINE OF THE NORTHEAST 1/4 OF SECTION 25 BEARS N00°02'32"E. MONUMENTS DESCRIBED HEREON.

BASIS OF ELEVATION
SPOT ELEVATION LOCATED AT THE W.C. WEST 1/4 CORNER OF SECTION 9, T1S, R103W, 6th P.M. TAKEN FROM BANTA RIDGE QUADRANGLE, COLORADO, RIO BLANCO COUNTY, 7.5 MINUTE QUAD. (TOPOGRAPHIC MAP) PUBLISHED BY THE UNITED STATES DEPARTMENT OF THE INTERIOR, GEOLOGICAL SURVEY. SAID ELEVATION IS MARKED AS BEING 5876 FEET.



UELS, LLC
Corporate Office * 85 South 200 East
Vernal, UT 84078 * (435) 789-1017



CERTIFICATE
THIS IS TO CERTIFY THAT THE ABOVE PLAT WAS PREPARED FROM FIELD NOTES OF ACTUAL SURVEYS MADE BY ME UNDER MY SUPERVISION AND THAT THE SAME ARE TRUE AND CORRECT TO THE BEST OF MY KNOWLEDGE AND BELIEF.

REGISTERED LAND SURVEYOR
REGISTRATION NO. 38130
STATE OF COLORADO 2013-19

KGH OPERATING COMPANY

(AS-DRILLED) FEDERAL 24-15ST
NW 1/4 NE 1/4, SECTION 25, T1S, R104W, 6th P.M.
RIO BLANCO COUNTY, COLORADO

SURVEYED BY	JOEL LeFEVRE	08-14-19	SCALE
DRAWN BY	T.L.L.	08-15-19	1" = 1000'

(AS-DRILLED) WELL LOCATION PLAT