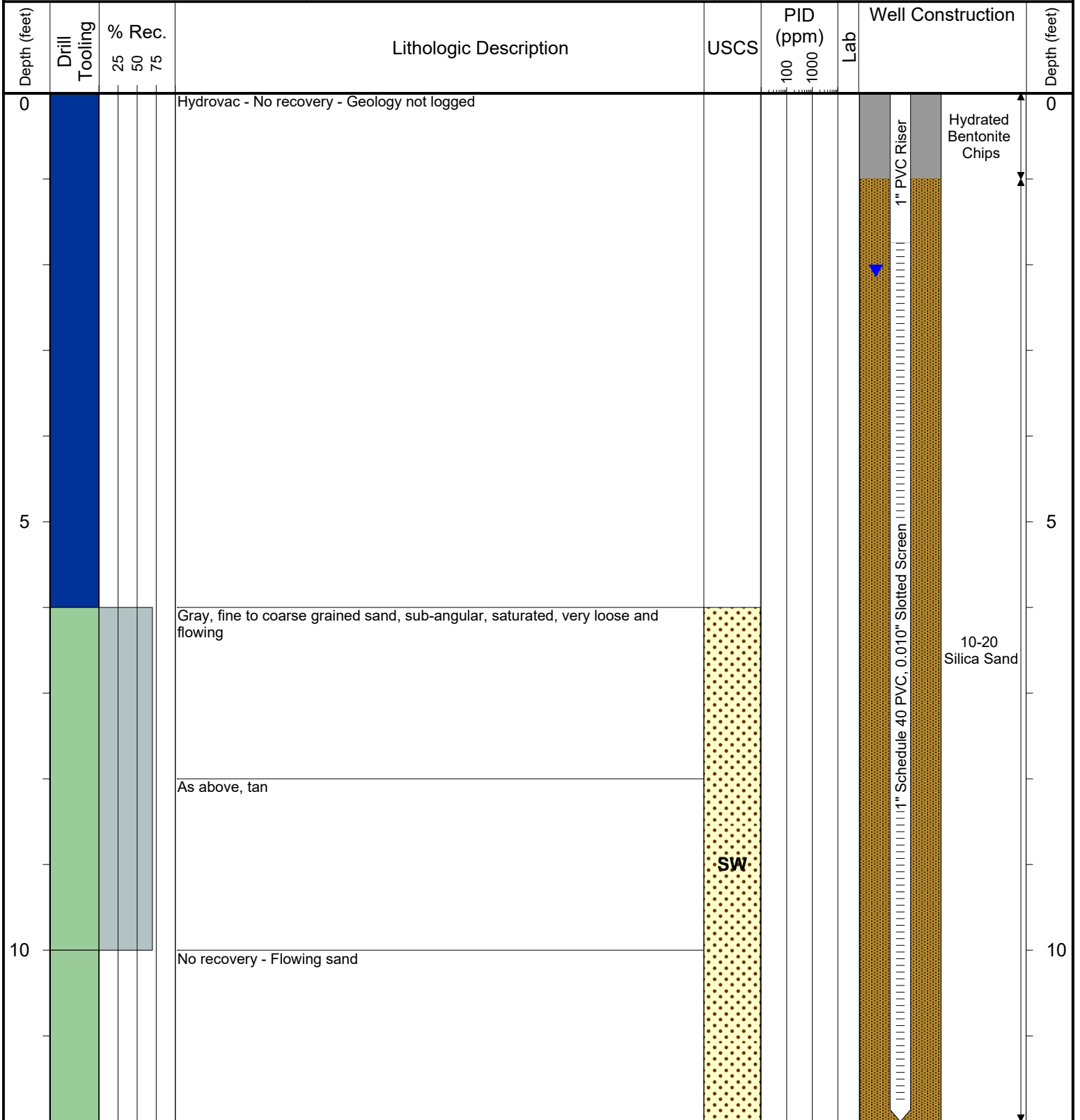




6899 Pecos Street, Unit C  
Denver, Colorado 80221

CLIENT: Kerr-McGee Oil & Gas Onshore LP	Lorenz Federal L30-4, L30-3; Lorenz L30-5 Production Facility
LOGGED BY: Alexander Hamilton	
PROJECT MANAGER: Robert Cornez	BORING / WELL ID: BH01
DRILLING CONTRACTOR: Tasman Geosciences, Inc.	
DRILLING EQUIPMENT: AMS Powerprobe 9300-SK	SURFACE COMPLETION: Flush Mount
DRILL BIT SIZE (INCHES): 2.375"	NORTHING (CO STATE PLANE): 40.199562762
DATE STARTED - COMPLETED: 3/7/2018	EASTING (CO STATE PLANE): -104.82744447
TOTAL WELL DEPTH (FT. BGS): 12	CASING ELEVATION (FT. AMSL): 4742.49
DEPTH TO WATER (FT. BGS): 2.07 (4/2/18)	GROUND ELEVATION (FT. AMSL): 4742.7



**Drilling / Sample Method:**

- Macro-Core
- Hydrovac
- Expendable Well Tip
- Hand Auger

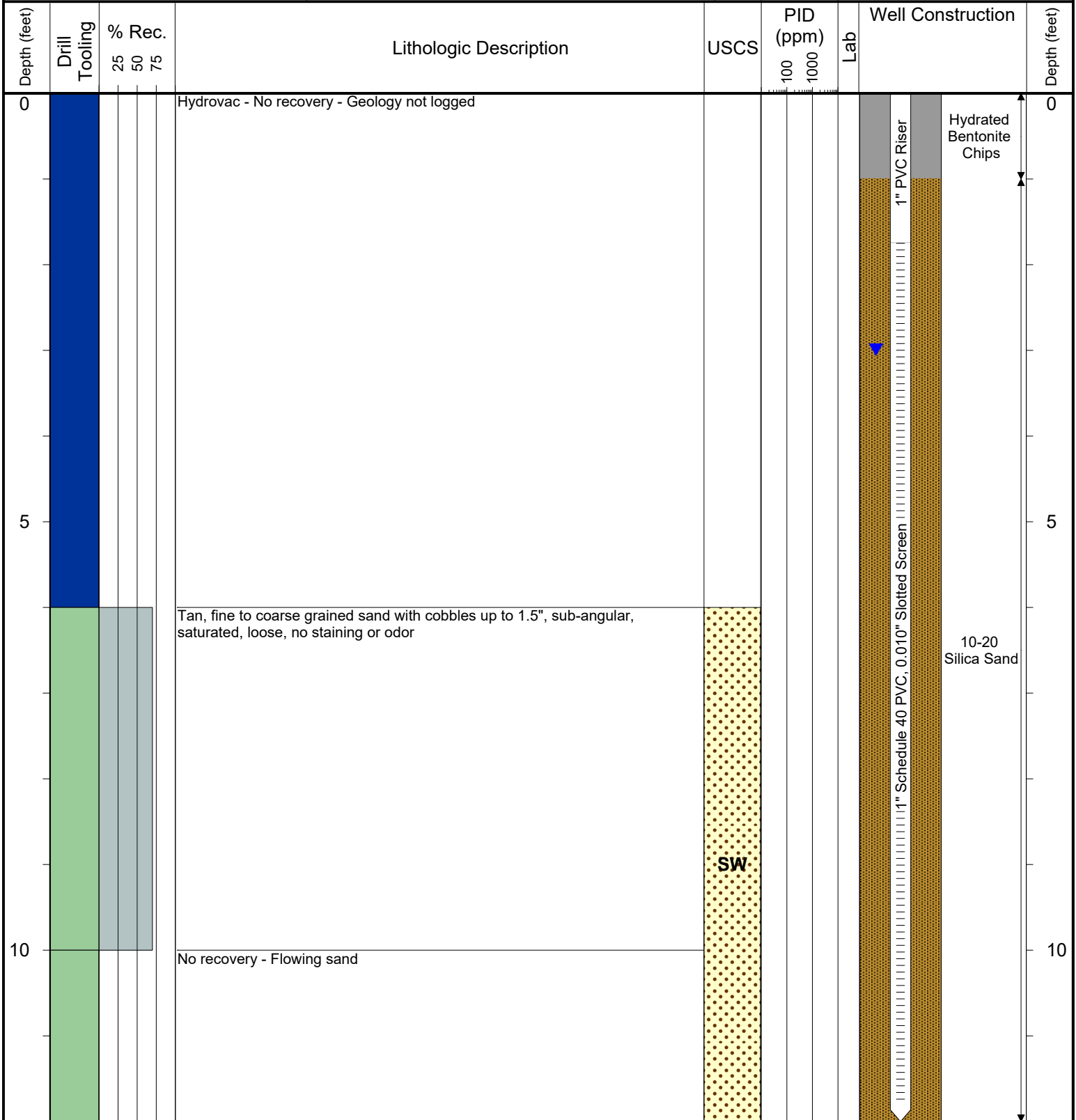
**Laboratory Sample Types:**

- Geotechnical Lab
- Analytical Chemistry Lab
- Geotechnical & Analytical Chemistry Lab



6899 Pecos Street, Unit C  
Denver, Colorado 80221

CLIENT: Kerr-McGee Oil & Gas Onshore LP	Lorenz Federal L30-4, L30-3; Lorenz L30-5 Production Facility
LOGGED BY: Alexander Hamilton	
PROJECT MANAGER: Robert Cornez	BORING / WELL ID: BH02
DRILLING CONTRACTOR: Tasman Geosciences, Inc.	SURFACE COMPLETION: Flush Mount
DRILLING EQUIPMENT: AMS Powerprobe 9300-SK	NORTHING (CO STATE PLANE): 40.199631575
DRILL BIT SIZE (INCHES): 2.375"	EASTING (CO STATE PLANE): -104.82743982
DATE STARTED - COMPLETED: 3/7/2018	CASING ELEVATION (FT. AMSL): 4743.5
TOTAL WELL DEPTH (FT. BGS): 12	GROUND ELEVATION (FT. AMSL): 4743.55
DEPTH TO WATER (FT. BGS): 2.99 (4/2/18)	



**Drilling / Sample Method:**

- Macro-Core
- Hydrovac
- Expendable Well Tip
- Hand Auger

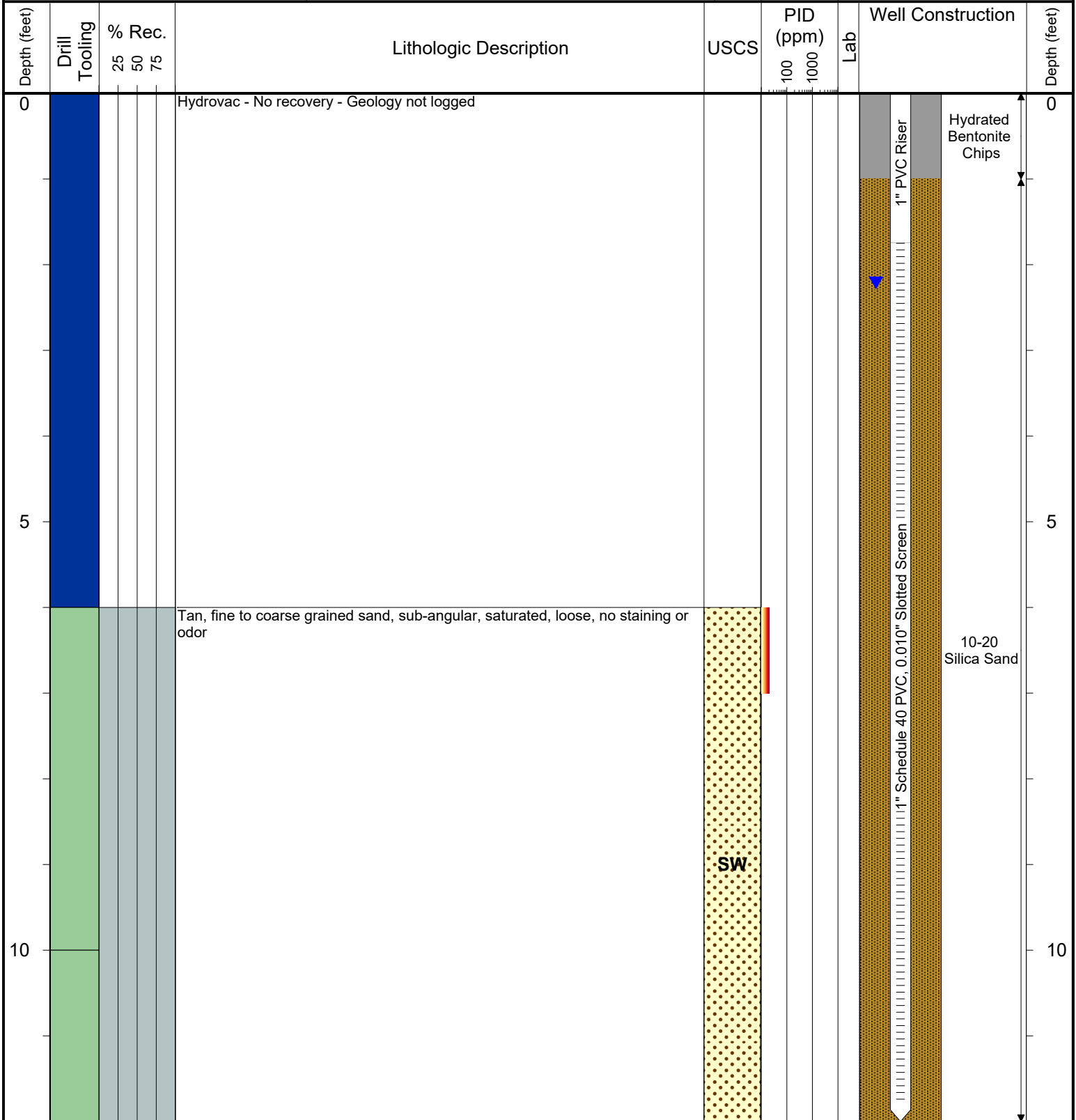
**Laboratory Sample Types:**

- Geotechnical Lab
- Analytical Chemistry Lab
- Geotechnical & Analytical Chemistry Lab



6899 Pecos Street, Unit C  
Denver, Colorado 80221

CLIENT: Kerr-McGee Oil & Gas Onshore LP	Lorenz Federal L30-4, L30-3; Lorenz L30-5 Production Facility
LOGGED BY: Alexander Hamilton	
PROJECT MANAGER: Robert Cornez	BORING / WELL ID: BH03 (Destroyed)
DRILLING CONTRACTOR: Tasman Geosciences, Inc.	
DRILLING EQUIPMENT: AMS Powerprobe 9300-SK	SURFACE COMPLETION: Flush Mount
DRILL BIT SIZE (INCHES): 2.375"	NORTHING (CO STATE PLANE): 40.199604806
DATE STARTED - COMPLETED: 3/7/2018	EASTING (CO STATE PLANE): -104.82737795
TOTAL WELL DEPTH (FT. BGS): 12	CASING ELEVATION (FT. AMSL): 4742.63
DEPTH TO WATER (FT. BGS): 2.21 (4/2/18)	GROUND ELEVATION (FT. AMSL): 4742.81

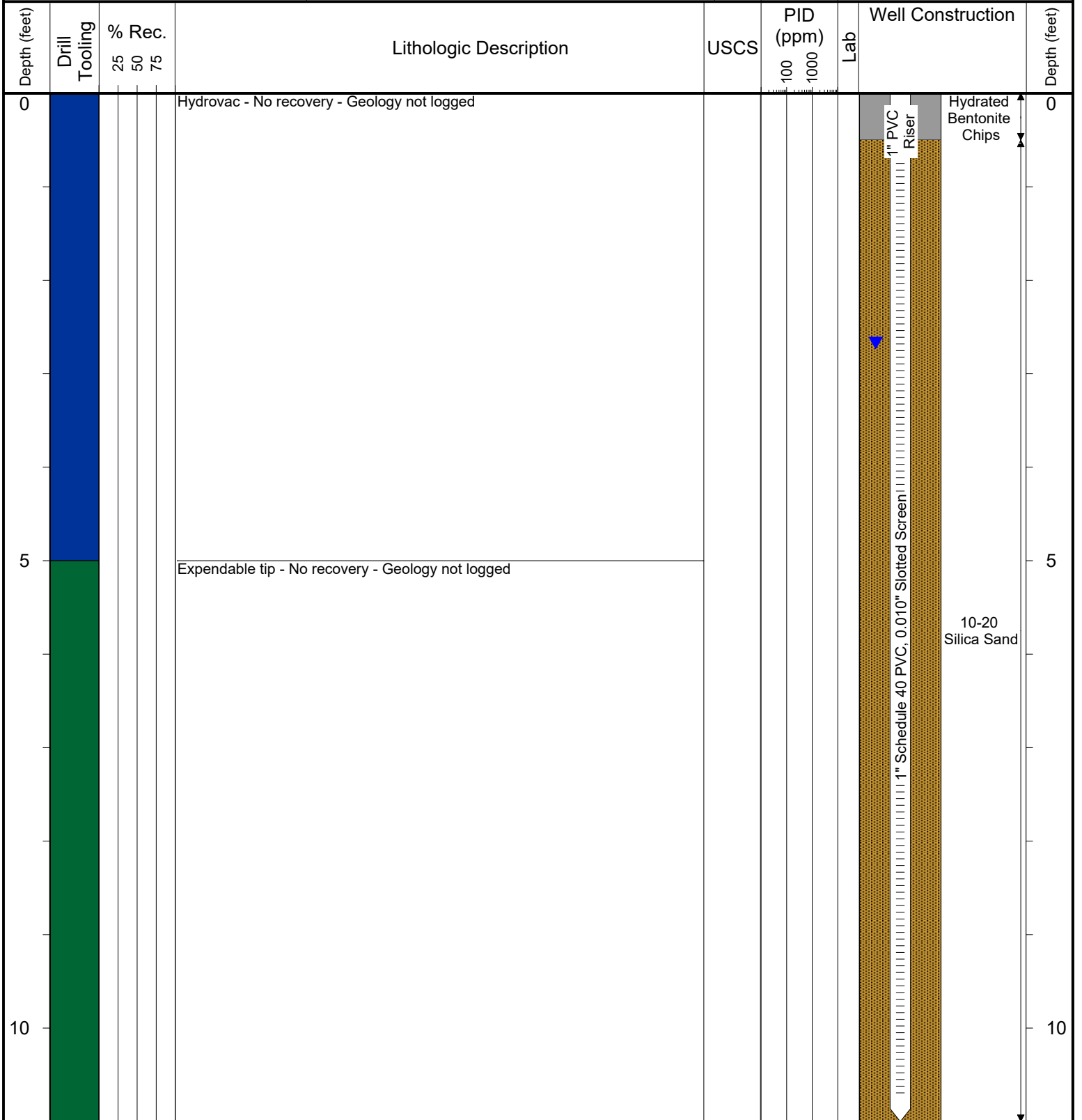


<b>Drilling / Sample Method:</b>		<b>Laboratory Sample Types:</b>		
Macro-Core	Hydrovac	Geotechnical Lab	Geotechnical & Analytical Chemistry Lab	
Expendable Well Tip	Hand Auger	Analytical Chemistry Lab		



6899 Pecos Street, Unit C  
Denver, Colorado 80221

CLIENT: Kerr-McGee Oil & Gas Onshore LP	Lorenz Federal L30-4, L30-3; Lorenz L30-5 Production Facility
LOGGED BY: Eric Siegel, P.G.	
PROJECT MANAGER: Robert Cornez	BORING / WELL ID: BH03R
DRILLING CONTRACTOR: Tasman Geosciences, Inc.	
DRILLING EQUIPMENT: AMS Powerprobe 9300-SK	SURFACE COMPLETION: Flush Mount
DRILL BIT SIZE (INCHES): 2.375"	NORTHING (CO STATE PLANE): 40.199595733295
DATE STARTED - COMPLETED: 9/7/2018	EASTING (CO STATE PLANE): -104.82736626696
TOTAL WELL DEPTH (FT. BGS): 11	CASING ELEVATION (FT. AMSL): 4743.2
DEPTH TO WATER (FT. BGS): 2.67 (9/13/18) ▼	GROUND ELEVATION (FT. AMSL): 4743.54



**Drilling / Sample Method:**

- Macro-Core
- Hydrovac
- Expendable Well Tip
- Hand Auger

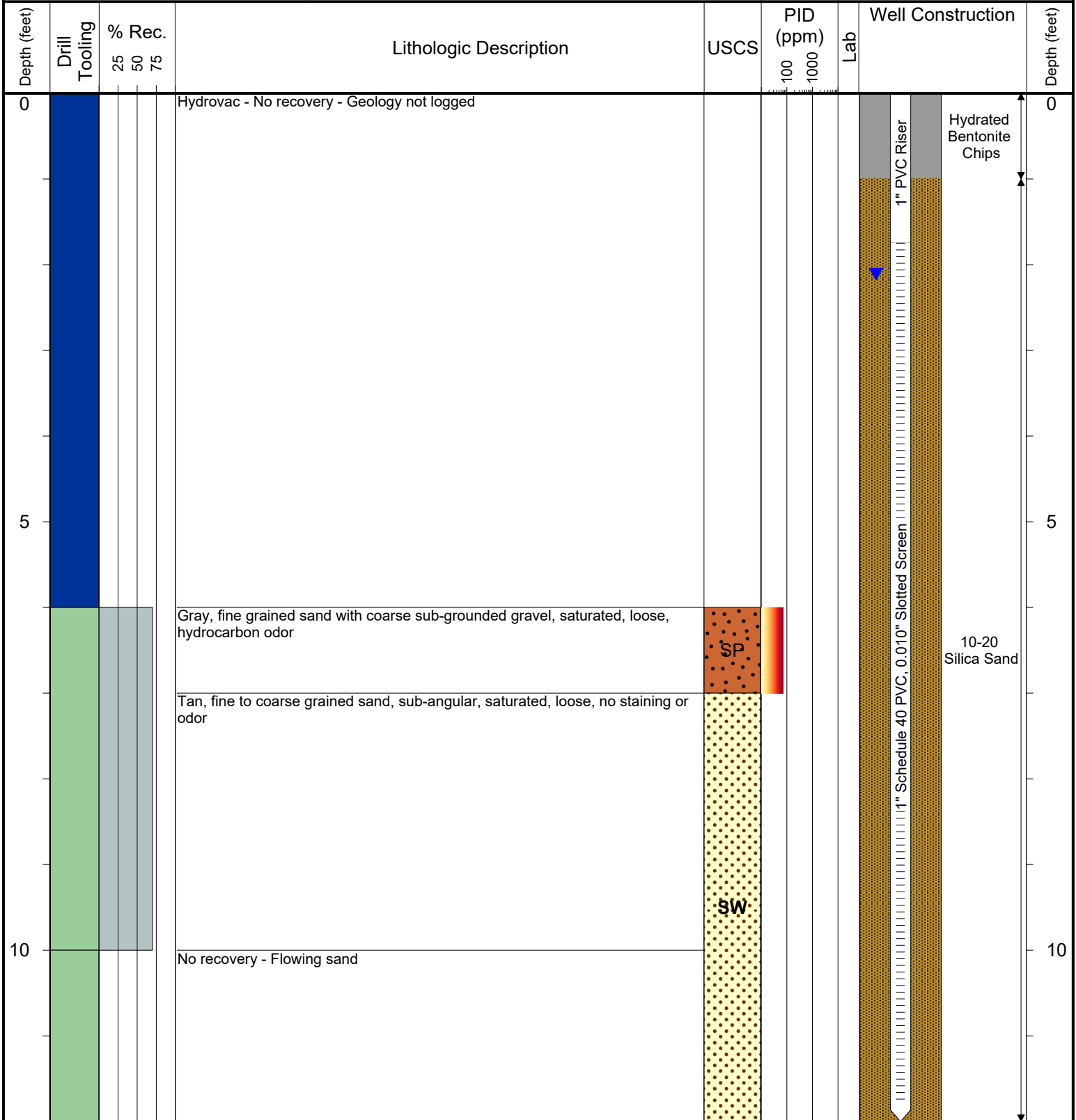
**Laboratory Sample Types:**

- Geotechnical Lab
- Analytical Chemistry Lab
- Geotechnical & Analytical Chemistry Lab



6899 Pecos Street, Unit C  
Denver, Colorado 80221

CLIENT: Kerr-McGee Oil & Gas Onshore LP	Lorenz Federal L30-4, L30-3; Lorenz L30-5 Production Facility
LOGGED BY: Alexander Hamilton	
PROJECT MANAGER: Robert Cornez	BORING / WELL ID: BH04 (Destroyed)
DRILLING CONTRACTOR: Tasman Geosciences, Inc.	
DRILLING EQUIPMENT: AMS Powerprobe 9300-SK	SURFACE COMPLETION: Flush Mount
DRILL BIT SIZE (INCHES): 2.375"	NORTHING (CO STATE PLANE): 40.19955949
DATE STARTED - COMPLETED: 3/7/2018	EASTING (CO STATE PLANE): -104.82734589
TOTAL WELL DEPTH (FT. BGS): 12	CASING ELEVATION (FT. AMSL): 4742.65
DEPTH TO WATER (FT. BGS): 2.11 (4/2/18)	GROUND ELEVATION (FT. AMSL): 4742.77



**Drilling / Sample Method:**

- Macro-Core
- Hydrovac
- Expendable Well Tip
- Hand Auger

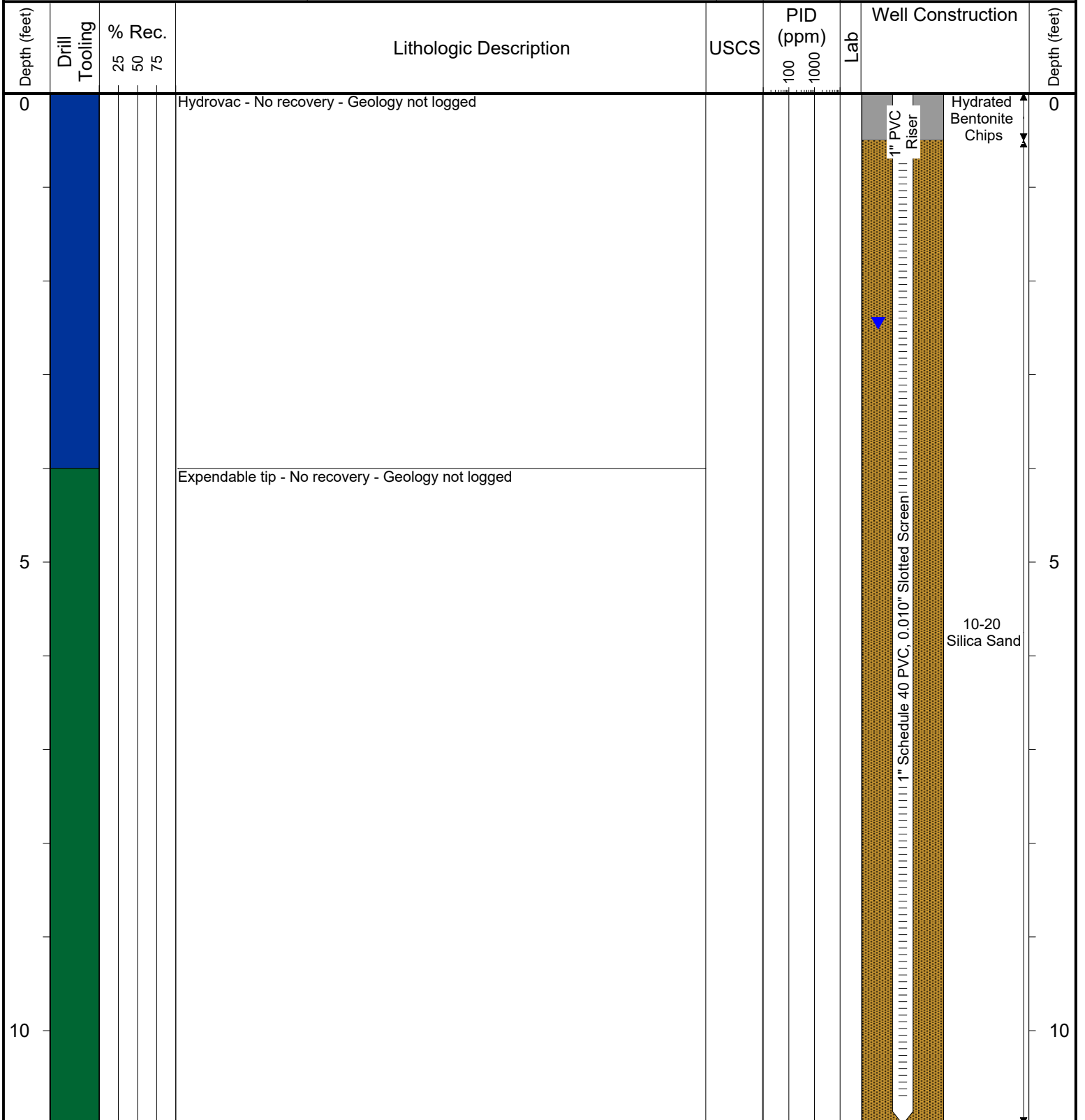
**Laboratory Sample Types:**

- Geotechnical Lab
- Analytical Chemistry Lab
- Geotechnical & Analytical Chemistry Lab



6899 Pecos Street, Unit C  
Denver, Colorado 80221

CLIENT: Kerr-McGee Oil & Gas Onshore LP	Lorenz Federal L30-4, L30-3; Lorenz L30-5 Production Facility
LOGGED BY: Eric Siegel, P.G.	
PROJECT MANAGER: Robert Cornez	BORING / WELL ID: BH04R
DRILLING CONTRACTOR: Tasman Geosciences, Inc.	
DRILLING EQUIPMENT: AMS Powerprobe 9300-SK	SURFACE COMPLETION: Flush Mount
DRILL BIT SIZE (INCHES): 2.375"	NORTHING (CO STATE PLANE): 40.199545248458
DATE STARTED - COMPLETED: 9/7/2018	EASTING (CO STATE PLANE): -104.82733728025
TOTAL WELL DEPTH (FT. BGS): 11	CASING ELEVATION (FT. AMSL): 4742.81
DEPTH TO WATER (FT. BGS): 2.45 (9/13/18) ▼	GROUND ELEVATION (FT. AMSL): 4743.37



**Drilling / Sample Method:**

- Macro-Core
- Hydrovac
- Expendable Well Tip
- Hand Auger

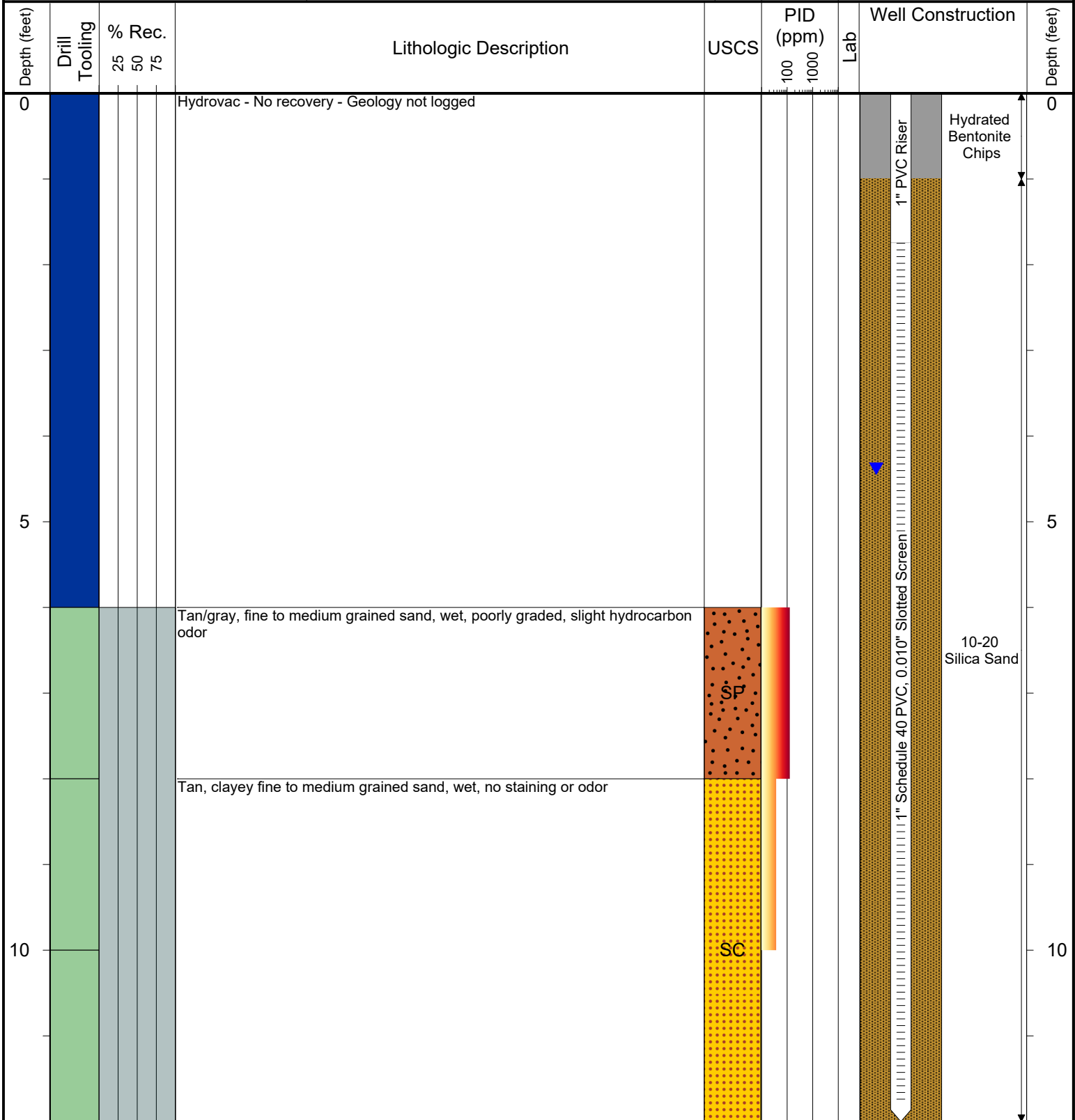
**Laboratory Sample Types:**

- Geotechnical Lab
- Analytical Chemistry Lab
- Geotechnical & Analytical Chemistry Lab



6899 Pecos Street, Unit C  
Denver, Colorado 80221

CLIENT: Kerr-McGee Oil & Gas Onshore LP	Lorenz Federal L30-4, L30-3; Lorenz L30-5 Production Facility
LOGGED BY: Alexander Hamilton	
PROJECT MANAGER: Robert Cornez	BORING / WELL ID: BH05
DRILLING CONTRACTOR: Tasman Geosciences, Inc.	
DRILLING EQUIPMENT: AMS Powerprobe 9300-SK	SURFACE COMPLETION: Flush Mount
DRILL BIT SIZE (INCHES): 2.375"	NORTHING (CO STATE PLANE): 40.199639175
DATE STARTED - COMPLETED: 8/23/2018	EASTING (CO STATE PLANE): -104.827345594
TOTAL WELL DEPTH (FT. BGS): 12	CASING ELEVATION (FT. AMSL): 4744.85
DEPTH TO WATER (FT. BGS): 4.38 (9/13/18) ▼	GROUND ELEVATION (FT. AMSL): 4745.2



<b>Drilling / Sample Method:</b>		<b>Laboratory Sample Types:</b>	
Macro-Core	Hydrovac	Geotechnical Lab	Geotechnical & Analytical Chemistry Lab
Expendable Well Tip	Hand Auger	Analytical Chemistry Lab	