

Inspection Photos

Loc#424970

Operator: Laramie

Inspection Number: 692401313

Inspection Date: 8/20/19



COLORADO
Oil & Gas Conservation
Commission
Department of Natural Resources



Photo#1:

Overview of Location to Northwest, clearly showing erosion and instability of fill slope.

August 20, 2019



COLORADO
Oil & Gas Conservation
Commission
Department of Natural Resources

Inspection Photos: Laramie Annex Loc#424970



Photo#2:
Fill slopes remain unstable.



Photo#3:
Fill slopes remain unstable.

August 20, 2019



COLORADO
Oil & Gas Conservation
Commission
Department of Natural Resources

Inspection Photos: Laramie Annex Loc#424970



Photo#4:
Fill slopes remain unstable.



Photo#5:
Fill slopes remain unstable.

August 20, 2019



COLORADO
Oil & Gas Conservation
Commission
Department of Natural Resources

Inspection Photos: Laramie Annex Loc#424970

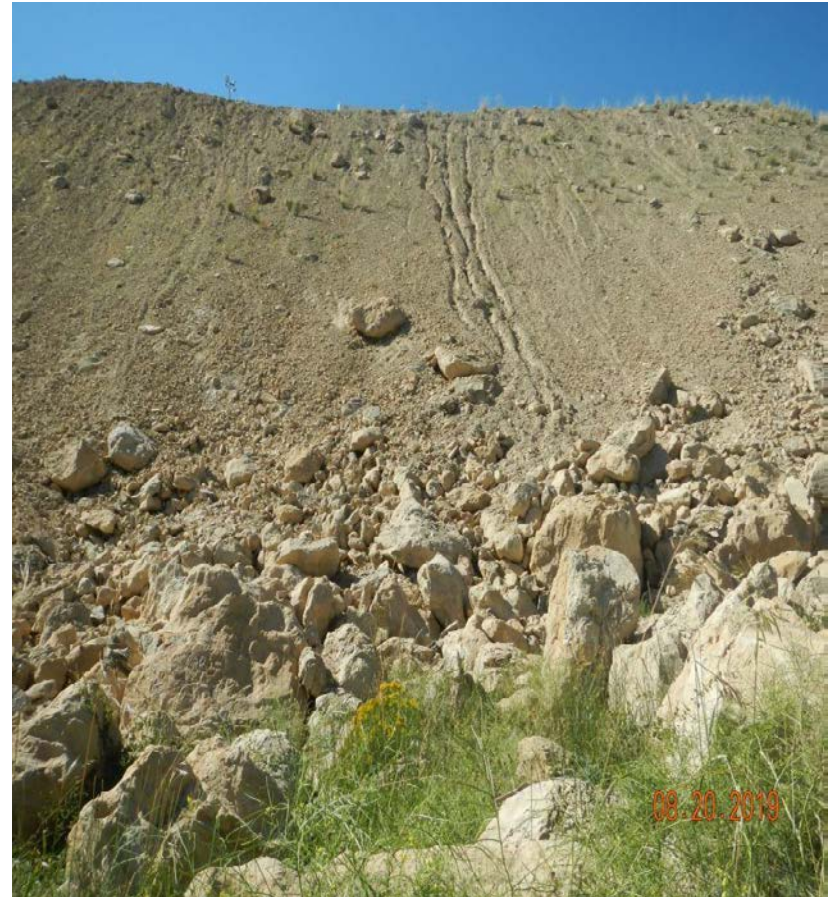


Photo#6:
Fill slopes remain unstable and erosion is occurring.

August 20, 2019



Photo#7:
Fill slopes remain unstable and erosion is occurring.



Photo#8:
Fill slopes remain unstable and erosion is occurring.

August 20, 2019