

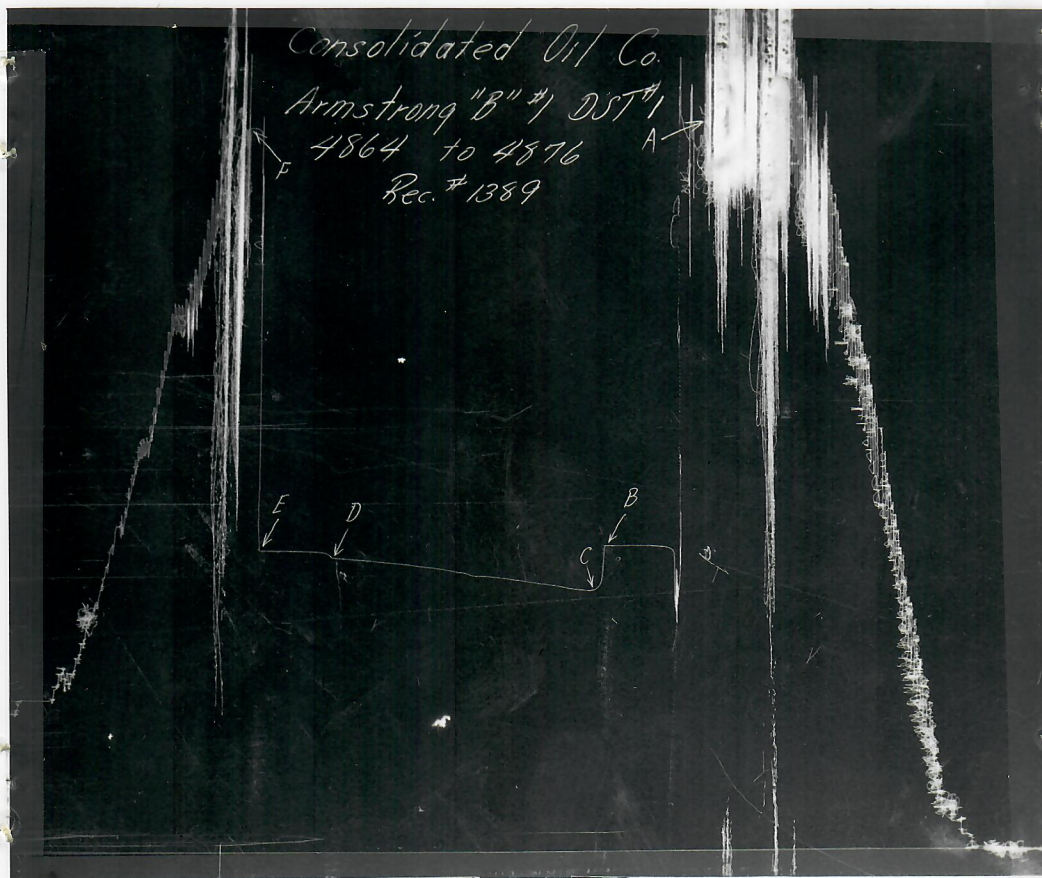


BEST IMAGE
AVAILABLE

PHD. LA 2-1206

VIRG'S TESTERS, INC.

BOX 712—STERLING, COLO.



Company Operating Well

Consolidated Oil Co.

Address

1700 Broadway
Denver 2, Colo.

Contractor and Rig No.

Allison Drig. Co., Inc.

Well Name and No.

Armstrong "B" # 1

County

State

Logan

Colorado

Sec.

Twn.

Rng.

1

8 N

53 W

Ticket

DST No.

Tester

5358

1

Byrd

Date of Test and Formation Tested

3-8-62

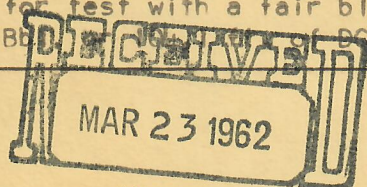
"J" Sand

RESULTS

		Field Pressure	Corrected Pressure
Initial Hydrostatic:	A	2606	2608
Final Hydrostatic:	F	2582	2590
Initial Flow:	C	768	897
Final Flow:	D	1009	1020
Initial Shut-in:	B	1069	1056
Final Shut-in:	E	1048	1045
Press. below bottom packer bled to:		1300	1255

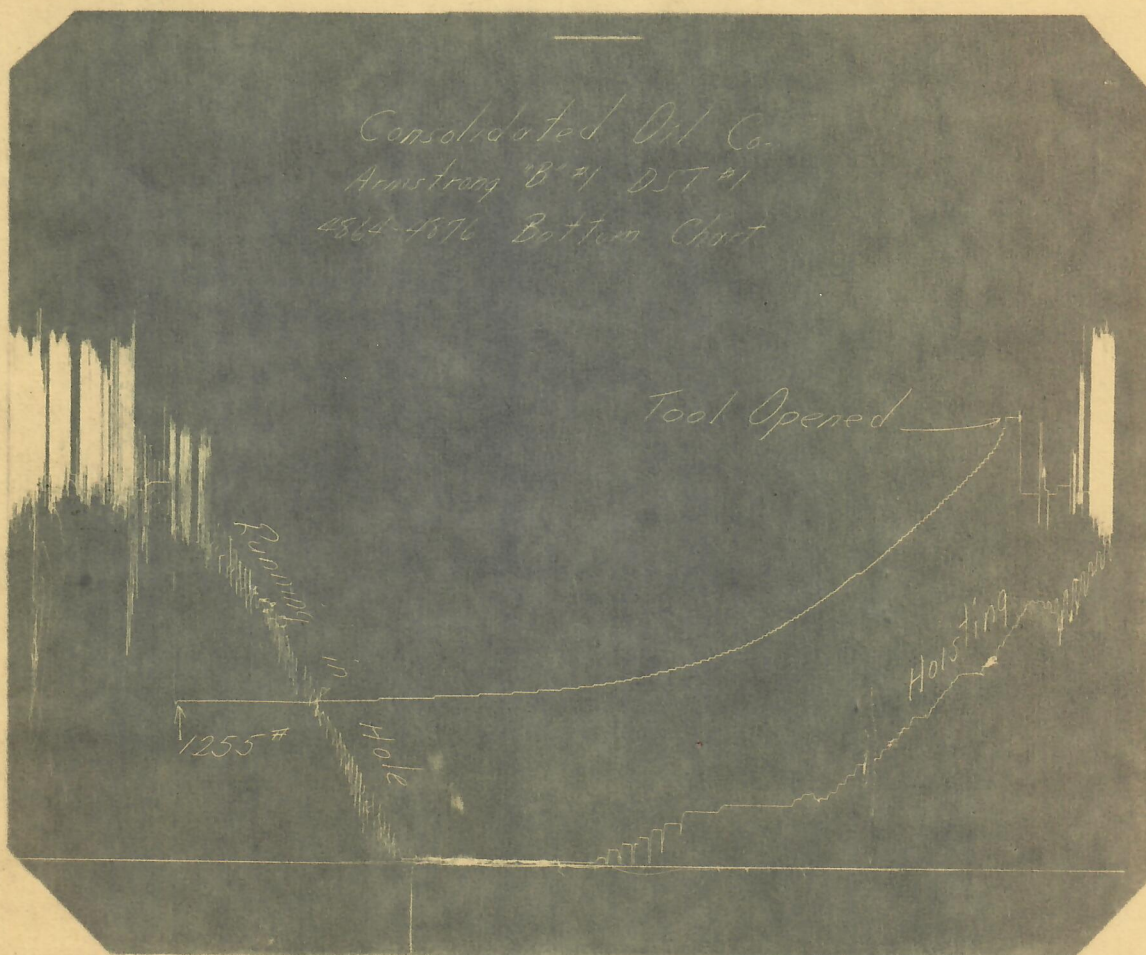
Total Depth 4890 Interval tested 4864 to 4876
Tool open for 2 hrs. Initial Shut-in 30 min. Final Shut-in 30 min.
Tool open @ 1:45 P M Mud Wt. 9.9 Vis. 110
Did well flow Gas? No
Did well flow Oil? No
Did well flow Water? No Witnessed by: S. E. Farmer
Was Blow measured? No
EXTRA EQUIPMENT: Jars? Yes Safety Jt.? Yes R. Sub? No
Extra packers? No No. final copies? 5
Cost of Test? \$ 470 Top Choke 1" Bottom Choke 15" D. P. Size 4 1/2 FH
Recorder No. 1389 Run At 4869 Was this a straddle test? Yes
Recovery in D. P. 2184 ft. of fluid, 1456 ft. of mud, 91 ft. of
muddy water and 637 ft. of water. Total recovery - 28.69 Bbl.

REMARKS: Spudded tool for 1 hr. through Niobrara and sand. Tool opened while spudding. Mud recovered while spudding. When on bottom, tool open for 2 min. before ISIP. Opened for test with a fair blow and remained steady throughout test. Tested annulus - .51 Bbl. of fluid. DC - .0049 Bbl./ft. DP - .0142 Bbl./ft. Test conclusive.



OIL & GAS
CONSERVATION COMMISSION

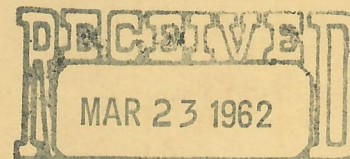
1-8N-5360

D. S. T. No. 1

Consolidated Oil Co. Armstrong "B" #1

This recorder blanked off below the bottom packer and since pressure bled to only 1255 lbs., which is more than the shut-in pressure, the bottom packer held. Recorder No. 3-S-1

BEST IMAGE
AVAILABLE



OIL & GAS
CONSERVATION COMMISSION