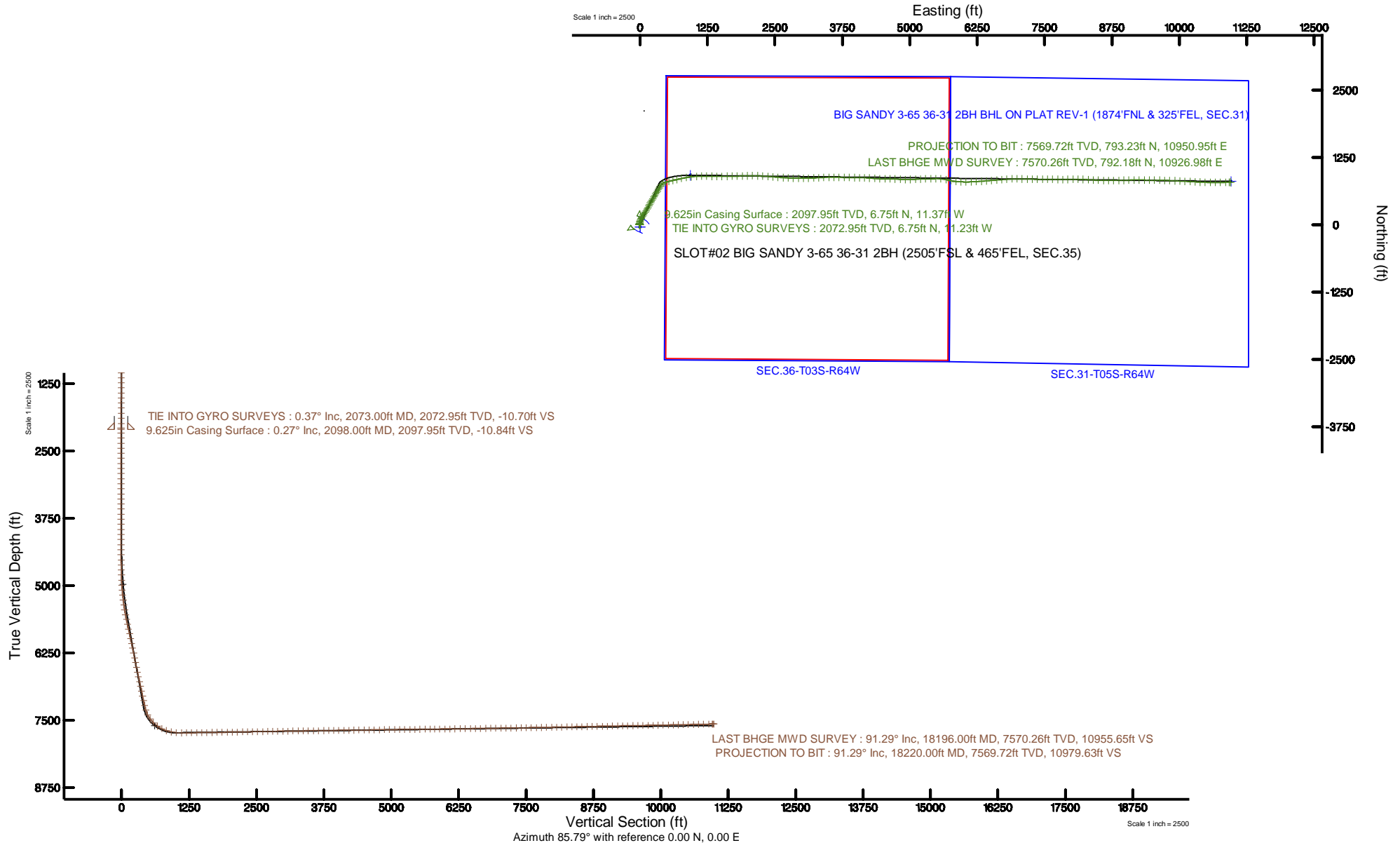


Burlington Resources

Location: COLORADO Slot: SLOT#02 BIG SANDY 3-65 36-31 2BH (2505'FSL & 465'FEL, SEC.35)
Field: ADAMS COUNTY (NAD83/TN) Well: BIG SANDY 3-65 36-31 2BH
Facility: SEC.35-T03S-R65W Wellbore: BIG SANDY 3-65 36-31 2BH PWB

Plot reference wellpath is BIG SANDY 3-65 36-31 2BH (REV-A.1) PWP	Grid System: NAD83 / Lambert Colorado SP, Northern Zone (501), US feet
True vertical depths are referenced to NABORS B16 (25KB) (RKB)	North Reference: True north
Measured depths are referenced to NABORS B16 (25KB) (RKB)	Scale: True distance
NABORS B16 (25KB) (RKB) to Mean Sea Level: 5549 feet	Depths are in feet
Mean Sea Level to Mud line (At Slot: SLOT#02 BIG SANDY 3-65 36-31 2BH (2505'FSL & 465'FEL, SEC.35): 0 feet	Created by: bensjacj on 2018-04-02
Coordinates are in feet referenced to Slot	Database: WA_DEN_Denver_Deln

BURLINGTON RESOURCES



REFERENCE WELLPATH IDENTIFICATION

Operator	Burlington Resources	Slot	SLOT#02 BIG SANDY 3-65 36-31 2BH (2505'FSL & 465'FEL, SEC.35)
Area	COLORADO	Well	BIG SANDY 3-65 36-31 2BH
Field	ADAMS COUNTY (NAD83/TN)	Wellbore	BIG SANDY 3-65 36-31 2BH AWP
Facility	SEC.35-T03S-R65W		

REPORT SETUP INFORMATION

Projection System	NAD83 / Lambert Colorado SP, Northern Zone (501), US feet	Software System	WellArchitect® 5.1
North Reference	True	User	Bensjacj
Scale	0.999995	Report Generated	04/02/2018 at 10:06 AM
Convergence at slot	0.57° East	Database/Source file	WA_DEN_Denver_Defn/BIG_SANDY_3-65_36-31_2BH_AWP.xml

WELLPATH LOCATION

	Local coordinates		Grid coordinates		Geographic coordinates	
	North[ft]	East[ft]	Easting[US ft]	Northing[US ft]	Latitude	Longitude
Slot Location	-79.94	0.00	3246465.82	1151790.15	39°44'48.070"N	104°37'24.560"W
Facility Reference Pt			3246465.03	1151870.08	39°44'48.860"N	104°37'24.560"W
Field Reference Pt			3257309.99	1164230.85	39°46'49.930"N	104°35'04.090"W

WELLPATH DATUM

Calculation method	Minimum curvature	NABORS B16 (25'KB) (RKB) to Facility Vertical Datum	5549.00ft
Horizontal Reference Pt	Slot	NABORS B16 (25'KB) (RKB) to Mean Sea Level	5549.00ft
Vertical Reference Pt	NABORS B16 (25'KB) (RKB)	NABORS B16 (25'KB) (RKB) to Mud Line at Slot (SLOT#02 BIG SANDY 3-65 36-31 2BH (2505'FSL & 465'FEL, SEC.35))	5549.00ft
MD Reference Pt	NABORS B16 (25'KB) (RKB)	Section Origin	N 0.00, E 0.00 ft
Field Vertical Reference	Mean Sea Level	Section Azimuth	85.79°

REFERENCE WELLPATH IDENTIFICATION			
Operator	Burlington Resources	Slot	SLOT#02 BIG SANDY 3-65 36-31 2BH (2505'FSL & 465'FEL, SEC.35)
Area	COLORADO	Well	BIG SANDY 3-65 36-31 2BH
Field	ADAMS COUNTY (NAD83/TN)	Wellbore	BIG SANDY 3-65 36-31 2BH AWP
Facility	SEC.35-T03S-R65W		

WELLPATH DATA (173 stations)								
MD [ft]	Inclination [°]	Azimuth [°]	TVD [ft]	Vert Sect [ft]	North [ft]	East [ft]	DLS [°/100ft]	Comments
2073.00	0.370	271.770	2072.95	-10.70	6.75	-11.23	0.07	TIE INTO GYRO SURVEYS
2165.00	0.000	98.320	2164.95	-11.00	6.76	-11.53	0.40	
2259.00	0.030	348.410	2258.95	-11.00	6.78	-11.53	0.03	
2353.00	0.040	84.540	2352.95	-10.97	6.81	-11.50	0.06	
2448.00	0.040	234.180	2447.95	-10.97	6.79	-11.50	0.08	
2541.00	0.040	86.120	2540.95	-10.96	6.78	-11.49	0.08	
2636.00	0.030	175.380	2635.95	-10.93	6.76	-11.46	0.05	
2730.00	0.040	156.330	2729.95	-10.92	6.70	-11.44	0.02	
2824.00	0.030	175.070	2823.95	-10.91	6.65	-11.43	0.02	
2918.00	0.000	98.320	2917.95	-10.91	6.62	-11.42	0.03	
3012.00	0.060	204.880	3011.95	-10.93	6.58	-11.44	0.06	
3107.00	0.060	329.400	3106.95	-10.98	6.57	-11.49	0.11	
3201.00	0.030	44.420	3200.95	-10.98	6.63	-11.50	0.06	
3295.00	0.030	347.960	3294.95	-10.97	6.68	-11.49	0.03	
3389.00	0.130	15.810	3388.95	-10.93	6.80	-11.46	0.11	
3483.00	0.040	208.270	3482.95	-10.91	6.88	-11.45	0.18	
3577.00	0.070	341.670	3576.95	-10.94	6.90	-11.48	0.11	
3672.00	0.070	259.170	3671.95	-11.02	6.95	-11.56	0.10	
3766.00	0.030	249.730	3765.95	-11.10	6.93	-11.64	0.04	
3860.00	0.000	98.320	3859.95	-11.12	6.92	-11.66	0.03	
3955.00	0.040	322.920	3954.95	-11.14	6.94	-11.68	0.04	
4049.00	0.030	225.230	4048.95	-11.18	6.95	-11.72	0.06	
4143.00	0.030	247.800	4142.95	-11.22	6.93	-11.76	0.01	
4238.00	0.070	254.790	4237.95	-11.30	6.90	-11.84	0.04	
4332.00	0.000	98.320	4331.95	-11.35	6.89	-11.89	0.07	
4426.00	2.030	23.220	4425.93	-10.59	8.42	-11.24	2.16	
4521.00	4.410	14.810	4520.77	-8.62	13.50	-9.64	2.55	
4615.00	4.630	13.130	4614.48	-6.31	20.68	-7.85	0.27	
4709.00	5.010	4.670	4708.15	-4.55	28.47	-6.66	0.86	
4804.00	6.770	4.350	4802.64	-3.07	38.19	-5.89	1.85	
4898.00	8.890	6.940	4895.76	-0.84	50.92	-4.60	2.29	
4992.00	10.000	17.200	4988.49	3.54	65.93	-1.31	2.14	
5086.00	10.560	24.570	5080.98	10.67	81.56	4.69	1.52	
5181.00	12.240	26.090	5174.11	19.94	98.53	12.74	1.80	
5275.00	13.050	27.120	5265.83	30.49	116.92	21.96	0.89	
5370.00	14.940	27.570	5358.00	42.51	137.32	32.52	1.99	
5464.00	16.420	29.710	5448.50	56.31	159.61	44.71	1.69	
5559.00	18.050	31.350	5539.23	72.36	183.84	59.02	1.79	
5653.00	19.300	33.190	5628.28	90.27	209.28	75.10	1.47	
5748.00	20.050	33.310	5717.74	109.72	236.03	92.64	0.79	
5843.00	20.810	33.180	5806.76	129.89	263.76	110.82	0.80	
5937.00	20.210	29.160	5894.81	148.96	291.91	127.87	1.63	
6032.00	20.900	28.420	5983.76	167.13	321.15	143.93	0.78	
6126.00	20.880	28.520	6071.58	185.22	350.61	159.91	0.04	
6221.00	20.670	29.840	6160.40	203.77	380.03	176.34	0.54	

REFERENCE WELLPATH IDENTIFICATION			
Operator	Burlington Resources	Slot	SLOT#02 BIG SANDY 3-65 36-31 2BH (2505'FSL & 465'FEL, SEC.35)
Area	COLORADO	Well	BIG SANDY 3-65 36-31 2BH
Field	ADAMS COUNTY (NAD83/TN)	Wellbore	BIG SANDY 3-65 36-31 2BH AWP
Facility	SEC.35-T03S-R65W		

WELLPATH DATA (173 stations)								
MD [ft]	Inclination [°]	Azimuth [°]	TVD [ft]	Vert Sect [ft]	North [ft]	East [ft]	DLS [°/100ft]	Comments
6315.00	20.170	29.340	6248.50	222.01	408.55	192.53	0.56	
6410.00	18.750	29.190	6338.07	239.47	436.16	208.00	1.50	
6504.00	18.430	30.360	6427.16	256.22	462.17	222.88	0.52	
6598.00	19.450	31.600	6516.07	273.81	488.32	238.59	1.17	
6693.00	20.790	32.180	6605.27	293.07	516.06	255.86	1.43	
6787.00	20.750	30.080	6693.16	312.35	544.59	273.09	0.79	
6882.00	20.670	30.390	6782.03	331.35	573.62	290.01	0.14	
6977.00	20.040	30.480	6871.09	350.13	602.11	306.75	0.66	
7072.00	20.080	32.170	6960.33	369.07	629.94	323.69	0.61	
7166.00	19.840	32.870	7048.68	388.26	657.00	340.94	0.36	
7261.00	22.150	29.350	7137.38	407.89	686.15	358.47	2.77	
7355.00	21.680	27.410	7224.58	426.79	717.01	375.15	0.92	
7450.00	23.350	38.850	7312.38	448.85	747.27	395.04	4.93	
7544.00	28.290	64.760	7397.24	482.49	771.37	427.00	12.98	
7639.00	37.010	72.820	7477.19	531.48	789.46	474.79	10.24	
7733.00	45.500	75.740	7547.80	592.18	806.10	534.43	9.26	
7828.00	54.420	77.410	7608.85	663.91	822.90	605.11	9.48	
7922.00	63.620	76.660	7657.19	743.47	840.99	683.56	9.81	
8017.00	72.330	77.010	7692.78	830.38	861.02	769.23	9.17	
8112.00	77.560	80.160	7717.45	921.35	879.14	859.12	6.37	
8206.00	85.900	83.270	7730.97	1014.05	892.50	951.08	9.46	
8301.00	90.770	86.330	7733.73	1108.96	901.10	1045.61	6.05	
8395.00	90.800	89.550	7732.44	1202.87	904.48	1139.53	3.43	
8490.00	90.770	91.770	7731.14	1297.51	903.38	1234.50	2.34	
8585.00	90.770	90.810	7729.86	1392.06	901.25	1329.47	1.01	
8679.00	90.650	90.060	7728.69	1485.75	900.53	1423.46	0.81	
8774.00	90.890	89.580	7727.42	1580.50	900.83	1518.45	0.56	
8868.00	91.050	89.450	7725.83	1674.29	901.63	1612.43	0.22	
8963.00	91.020	89.120	7724.11	1769.10	902.81	1707.41	0.35	
9058.00	90.740	88.400	7722.65	1863.96	904.87	1802.38	0.81	
9153.00	91.110	88.110	7721.12	1958.86	907.76	1897.32	0.49	
9247.00	90.800	89.160	7719.55	2052.73	910.00	1991.28	1.16	
9341.00	90.950	89.360	7718.12	2146.54	911.21	2085.26	0.27	
9436.00	90.950	91.670	7716.54	2241.20	910.36	2180.24	2.43	
9530.00	91.050	94.380	7714.90	2334.43	905.40	2274.08	2.88	
9625.00	90.990	94.290	7713.21	2428.36	898.22	2368.80	0.11	
9720.00	91.080	94.070	7711.49	2522.33	891.30	2463.53	0.25	
9814.00	90.980	94.910	7709.80	2615.23	883.94	2557.22	0.90	
9909.00	91.140	93.610	7708.05	2709.18	876.88	2651.94	1.38	
10003.00	90.920	92.770	7706.36	2802.38	871.65	2745.78	0.92	
10098.00	90.920	91.970	7704.83	2896.74	867.72	2840.69	0.84	
10192.00	90.980	90.550	7703.27	2990.29	865.66	2934.65	1.51	
10287.00	91.050	89.780	7701.59	3085.00	865.38	3029.63	0.81	
10381.00	90.770	88.580	7700.10	3178.82	866.73	3123.61	1.31	
10476.00	91.110	87.150	7698.54	3273.74	870.27	3218.53	1.55	

REFERENCE WELLPATH IDENTIFICATION			
Operator	Burlington Resources	Slot	SLOT#02 BIG SANDY 3-65 36-31 2BH (2505'FSL & 465'FEL, SEC.35)
Area	COLORADO	Well	BIG SANDY 3-65 36-31 2BH
Field	ADAMS COUNTY (NAD83/TN)	Wellbore	BIG SANDY 3-65 36-31 2BH AWP
Facility	SEC.35-T03S-R65W		

WELLPATH DATA (173 stations)								
MD [ft]	Inclination [°]	Azimuth [°]	TVD [ft]	Vert Sect [ft]	North [ft]	East [ft]	DLS [°/100ft]	Comments
10571.00	90.740	87.460	7697.00	3368.70	874.73	3313.41	0.51	
10665.00	90.860	86.190	7695.69	3462.67	879.94	3407.25	1.36	
10760.00	90.770	88.960	7694.34	3557.61	883.96	3502.15	2.92	
10854.00	90.680	90.870	7693.15	3651.35	884.10	3596.14	2.03	
10949.00	90.860	91.400	7691.87	3745.93	882.22	3691.11	0.59	
11043.00	90.520	90.590	7690.74	3839.53	880.58	3785.09	0.93	
11138.00	90.920	91.500	7689.55	3934.13	878.85	3880.06	1.05	
11232.00	90.860	90.840	7688.09	4027.70	876.93	3974.03	0.70	
11327.00	90.650	90.770	7686.84	4122.33	875.60	4069.02	0.23	
11421.00	90.860	91.220	7685.60	4215.93	873.97	4162.99	0.53	
11515.00	90.980	95.380	7684.09	4309.09	868.56	4256.80	4.43	
11610.00	90.770	93.900	7682.64	4402.95	860.87	4351.48	1.57	
11704.00	90.800	92.720	7681.35	4496.13	855.45	4445.31	1.26	
11799.00	90.800	90.040	7680.02	4590.66	853.16	4540.27	2.82	
11894.00	90.950	89.600	7678.57	4685.41	853.46	4635.25	0.49	
11988.00	91.540	93.100	7676.53	4778.93	851.24	4729.19	3.78	
12083.00	90.920	93.630	7674.49	4873.08	845.67	4824.01	0.86	
12178.00	90.680	90.310	7673.16	4967.51	842.40	4918.93	3.50	
12272.00	90.580	88.380	7672.13	5061.32	843.48	5012.91	2.06	
12366.00	90.460	87.620	7671.28	5155.24	846.76	5106.85	0.82	
12461.00	90.520	87.560	7670.46	5250.19	850.75	5201.76	0.09	
12555.00	90.680	88.160	7669.48	5344.12	854.26	5295.69	0.66	
12649.00	90.710	91.130	7668.34	5437.89	854.85	5389.67	3.16	
12744.00	90.620	87.250	7667.23	5532.70	856.19	5484.64	4.09	
12838.00	90.680	94.430	7666.17	5626.27	854.81	5578.56	7.64	
12933.00	90.550	103.410	7665.15	5718.68	840.10	5672.31	9.45	
13027.00	90.580	101.430	7664.22	5808.74	819.88	5764.10	2.11	
13121.00	90.400	96.020	7663.41	5900.32	805.63	5856.97	5.76	
13216.00	90.680	92.210	7662.52	5994.30	798.81	5951.71	4.02	
13310.00	90.990	90.230	7661.15	6087.86	796.81	6045.67	2.13	
13405.00	90.860	87.400	7659.61	6182.71	798.78	6140.63	2.98	
13500.00	90.890	86.380	7658.16	6277.68	803.93	6235.48	1.07	
13594.00	90.830	86.110	7656.75	6371.66	810.09	6329.26	0.29	
13689.00	90.890	85.540	7655.33	6466.65	817.00	6424.00	0.60	
13783.00	90.890	85.640	7653.87	6560.64	824.23	6517.71	0.11	
13878.00	90.830	85.950	7652.44	6655.63	831.19	6612.44	0.33	
13972.00	90.860	84.880	7651.05	6749.62	838.71	6706.13	1.14	
14067.00	90.860	85.250	7649.63	6844.60	846.88	6800.77	0.39	
14161.00	91.020	87.600	7648.09	6938.57	852.74	6894.57	2.51	
14255.00	90.860	91.070	7646.54	7032.36	853.83	6988.53	3.69	
14350.00	90.920	91.490	7645.07	7126.92	851.71	7083.50	0.45	
14444.00	90.890	91.090	7643.58	7220.47	849.59	7177.46	0.43	
14539.00	90.950	90.870	7642.06	7315.07	847.97	7272.44	0.24	
14633.00	90.860	90.530	7640.57	7408.71	846.82	7366.42	0.37	
14727.00	90.950	89.500	7639.09	7502.44	846.79	7460.40	1.10	

REFERENCE WELLPATH IDENTIFICATION			
Operator	Burlington Resources	Slot	SLOT#02 BIG SANDY 3-65 36-31 2BH (2505'FSL & 465'FEL, SEC.35)
Area	COLORADO	Well	BIG SANDY 3-65 36-31 2BH
Field	ADAMS COUNTY (NAD83/TN)	Wellbore	BIG SANDY 3-65 36-31 2BH AWP
Facility	SEC.35-T03S-R65W		

WELLPATH DATA (173 stations)								
MD [ft]	Inclination [°]	Azimuth [°]	TVD [ft]	Vert Sect [ft]	North [ft]	East [ft]	DLS [°/100ft]	Comments
14822.00	91.140	90.120	7637.36	7597.19	847.11	7555.39	0.68	
14916.00	91.110	91.630	7635.51	7690.80	845.67	7649.36	1.61	
15010.00	90.950	91.170	7633.82	7784.34	843.38	7743.31	0.52	
15105.00	91.200	89.910	7632.04	7878.99	842.48	7838.29	1.35	
15199.00	91.020	88.470	7630.22	7972.81	843.81	7932.26	1.54	
15294.00	91.110	89.800	7628.45	8067.63	845.24	8027.23	1.40	
15389.00	91.140	90.600	7626.59	8162.33	844.91	8122.21	0.84	
15483.00	91.200	91.890	7624.67	8255.88	842.87	8216.17	1.37	
15577.00	91.200	93.860	7622.70	8349.14	838.16	8310.02	2.10	
15672.00	91.140	92.980	7620.76	8443.27	832.49	8404.83	0.93	
15766.00	91.080	92.320	7618.94	8536.58	828.15	8498.71	0.70	
15860.00	91.200	91.240	7617.07	8630.05	825.23	8592.65	1.16	
15955.00	91.080	90.980	7615.18	8724.62	823.39	8687.61	0.30	
16049.00	91.170	89.500	7613.33	8818.32	822.99	8781.59	1.58	
16144.00	91.080	88.890	7611.47	8913.13	824.33	8876.56	0.65	
16238.00	91.010	87.520	7609.75	9007.03	827.27	8970.50	1.46	
16333.00	91.080	88.590	7608.02	9101.94	830.50	9065.43	1.13	
16428.00	91.140	89.560	7606.18	9196.76	832.03	9160.40	1.02	
16522.00	91.080	90.660	7604.36	9290.48	831.85	9254.38	1.17	
16617.00	91.020	90.390	7602.62	9385.14	830.98	9349.36	0.29	
16711.00	91.110	90.750	7600.87	9478.79	830.04	9443.34	0.39	
16806.00	91.020	89.590	7599.10	9573.50	829.76	9538.32	1.22	
16900.00	91.020	92.140	7597.43	9667.11	828.34	9632.28	2.71	
16995.00	91.110	91.210	7595.66	9761.59	825.57	9727.23	0.98	
17089.00	91.080	92.790	7593.87	9855.02	822.29	9821.15	1.68	
17184.00	91.080	92.170	7592.08	9949.35	818.18	9916.04	0.65	
17278.00	91.080	93.510	7590.31	10042.62	813.52	10009.91	1.43	
17373.00	91.110	92.960	7588.49	10136.80	808.16	10104.74	0.58	
17467.00	91.290	93.260	7586.52	10230.02	803.06	10198.58	0.37	
17560.00	91.200	93.140	7584.50	10322.22	797.87	10291.41	0.16	
17655.00	91.320	92.230	7582.41	10416.51	793.42	10386.28	0.97	
17749.00	91.230	91.900	7580.32	10509.92	790.04	10480.20	0.36	
17843.00	91.200	90.780	7578.33	10603.46	787.84	10574.15	1.19	
17938.00	91.380	90.100	7576.19	10698.12	787.11	10669.12	0.74	
18032.00	91.290	89.530	7574.00	10791.86	787.41	10763.10	0.61	
18126.00	91.320	88.000	7571.86	10885.71	789.44	10857.05	1.63	
18196.00	91.290	87.500	7570.26	10955.65	792.18	10926.98	0.72	LAST BHGE MWD SURVEY
18220.00	91.290	87.500	7569.72	10979.63	793.23	10950.95	0.00	PROJECTION TO BIT

HOLE & CASING SECTIONS - Ref Wellbore: BIG SANDY 3-65 36-31 2BH AWP Ref Wellpath: BIG SANDY 3-65 36-31 2BH AWP									
String/Diameter	Start MD [ft]	End MD [ft]	Interval [ft]	Start TVD [ft]	End TVD [ft]	Start N/S [ft]	Start E/W [ft]	End N/S [ft]	End E/W [ft]
9.625in Casing Surface	25.00	2098.00	2073.00	25.00	2097.95	0.00	0.00	6.75	-11.37
8.5in Open Hole	2098.00	18220.00	16122.00	2097.95	7569.72	6.75	-11.37	793.23	10950.95

REFERENCE WELLPATH IDENTIFICATION			
Operator	Burlington Resources	Slot	SLOT#02 BIG SANDY 3-65 36-31 2BH (2505'FSL & 465'FEL, SEC.35)
Area	COLORADO	Well	BIG SANDY 3-65 36-31 2BH
Field	ADAMS COUNTY (NAD83/TN)	Wellbore	BIG SANDY 3-65 36-31 2BH AWP
Facility	SEC.35-T03S-R65W		

TARGETS								
Name	TVD [ft]	North [ft]	East [ft]	Grid East [US ft]	Grid North [US ft]	Latitude	Longitude	Shape
SEC.31-T05S-R64W	0.00	-39.46	-0.78	3246465.43	1151750.68	39°44'47.680"N	104°37'24.570"W	polygon
SEC.36-T05S-R64W	0.00	-39.46	-0.78	3246465.43	1151750.68	39°44'47.680"N	104°37'24.570"W	polygon
BIG SANDY 3-65 36-31 2BH BHL ON PLAT REV-1 (1874'FNL & 325'FEL, SEC.31)	7598.00	806.84	10957.70	3257414.93	1152705.25	39°44'56.020"N	104°35'04.270"W	point
BIG SANDY 3-65 36-31 2BH BPI ON PLAT REV-1 (1850'FNL & 460'FWL, SEC.36)	7732.00	920.81	929.47	3247386.14	1152720.10	39°44'57.170"N	104°37'12.660"W	point

WELLPATH COMPOSITION - Ref Wellbore: BIG SANDY 3-65 36-31 2BH AWP						Ref Wellpath: BIG SANDY 3-65 36-31 2BH AWP
Start MD [ft]	End MD [ft]	Positional Uncertainty Model	Log Name/Comment		Wellbore	
25.00	2073.00	Gyrodata standard - Drop gyro or Multi-shot	GYRODATA SURFACE SURVEYS <25 - 2073>		BIG SANDY 3-65 36-31 2BH AWP	
2073.00	18196.00	BHI AutoTrak Curve (IFR1, Short)	BHI AUTOTRAK CURVE 8 1/2" (IFR1, SHORT) <2073 - 18196>		BIG SANDY 3-65 36-31 2BH AWP	
18196.00	18220.00	Blind Drilling (std)	Projection to bit		BIG SANDY 3-65 36-31 2BH AWP	

REFERENCE WELLPATH IDENTIFICATION			
Operator	Burlington Resources	Slot	SLOT#02 BIG SANDY 3-65 36-31 2BH (2505'FSL & 465'FEL, SEC.35)
Area	COLORADO	Well	BIG SANDY 3-65 36-31 2BH
Field	ADAMS COUNTY (NAD83/TN)	Wellbore	BIG SANDY 3-65 36-31 2BH AWB
Facility	SEC.35-T03S-R65W		

WELLPATH COMMENTS				
MD [ft]	Inclination [°]	Azimuth [°]	TVD [ft]	Comment
2073.00	0.370	271.770	2072.95	TIE INTO GYRO SURVEYS
18196.00	91.290	87.500	7570.26	LAST BHGE MWD SURVEY
18220.00	91.290	87.500	7569.72	PROJECTION TO BIT