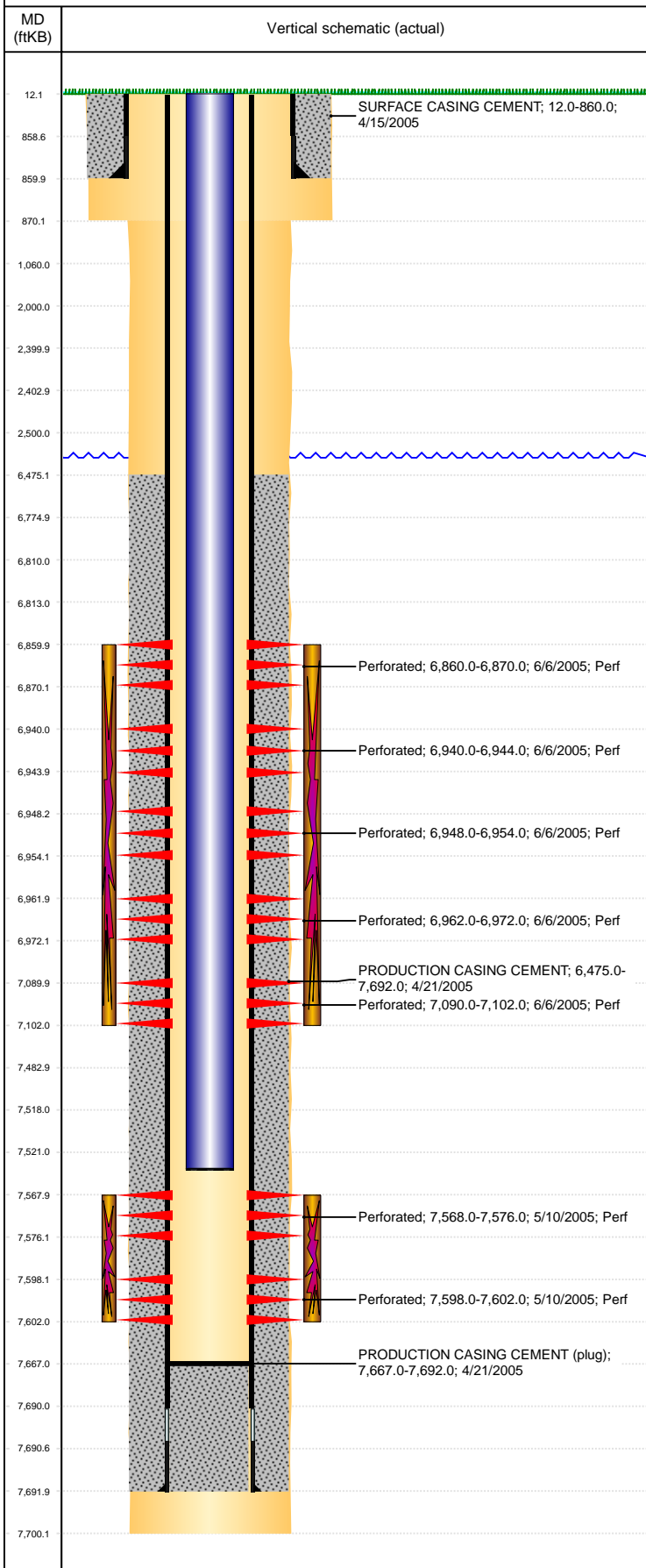


**Well Name: PERKINS 31-07**

VERTICAL, ORIGINAL HOLE, 9/5/2019 10:59:30 AM



Well Header									
API 05-123-22853		Business Unit DJ BASIN			District 15		Well Config VERTICAL		
KB - GL / MSL (ft... 12.00		Spud Date 4/14/2005		P & A Date		Well Production Status SI			SoRT No
Comment LIMITED ENTRY. STATE SHOWS SHUT IN SINCE APR 2017.									
Surface Location (Congressional)									
Qtr 3 NW	Qtr 4 NE	Section 7	Twnshp 2	Twنش... N	Range 64	Rng E/... W	Actual Latitude (°) 40.15818737	Actual Longitude (°) -104.59173191	
Wellbore Sections									
Section Des			Size (in)			Act Top, MD (ftKB)		Act Btm, MD (ftKB)	
SURFACE			12 1/4			12		870	
PRODUCTION			7 7/8			870		7,700	
Casing Strings									
Csg Des			Run Date		OD (in)	Wt/Len (lb/ft)	Grade	Top, MD (ftKB)	MD (ftKB)
Surface			4/15/2005		8 5/8	24.00	?	12.0	860.0
Production			4/21/2005		4 1/2	11.60	?	12.0	7,692.0
Cement									
Des					Start Date		Top (ftKB)		Btm (ftKB)
SURFACE CASING CEMENT					4/15/2005		12.0		860.0
PRODUCTION CASING CEMENT					4/21/2005		6,475.0		7,692.0
Zone Statuses									
Zone Name		Status Date	Status	Fluid Type	Job			Prod Method	
CODELL		3/26/2010	PR	Water	COMMINGLE ZONES, 6/27/2006 00:00			Flowing	
CODELL		5/9/2017	SI						
J SAND		3/26/2010	PR	Water				Flowing	
J SAND		5/9/2017	SI						
NIOBRARA		6/28/2006	PR						
NIOBRARA		3/26/2010	PR	Water				Flowing	
NIOBRARA-CO...		3/26/2010	PR	Water				Flowing	
Perforation Data									
Linked Zone			Bnch/Stg	Entered Shot Total	Top (ftKB)		Btm (ftKB)		Date
NIOBRARA, ORIGINAL HOLE				30	6,860.00		6,870.00		6/6/2005
NIOBRARA, ORIGINAL HOLE				16	6,940.00		6,944.00		6/6/2005
NIOBRARA, ORIGINAL HOLE				24	6,948.00		6,954.00		6/6/2005
NIOBRARA, ORIGINAL HOLE				40	6,962.00		6,972.00		6/6/2005
CODELL, ORIGINAL HOLE				48	7,090.00		7,102.00		6/6/2005
J SAND, ORIGINAL HOLE				32	7,568.00		7,576.00		5/10/2005
J SAND, ORIGINAL HOLE				16	7,598.00		7,602.00		5/10/2005
Stimulation Intervals									
Zone					Start Date		Top (ftKB)		Btm (ftKB)
NIOBRARA-CODELL, ORIGINAL HOLE					6/7/2005		6,860.0		7,102.0
J SAND, ORIGINAL HOLE					5/11/2005		7,568.0		7,602.0
Other In Hole									
Run Date		Des				OD (in)	Top (ftKB)		Btm (ftKB)
7/7/2016		Plunger Lift				1 7/8			
Logs									
Date		Type				Top, MD (ftKB)		Btm, MD (ftKB)	
4/20/2005		TRIPLE COMBO				860.0		7,707.0	
5/9/2005		CBL/CCL/GR				6,350.0		7,662.0	
7/10/2018		GYRO				12.0		7,450.0	
Plug Back Total Depths									
Date		Type			Com				Depth (ftKB)
5/9/2005		FILL			DEPTH LOGGER ON CBL				7,667.0
6/28/2006		FILL			CLEAN OUT TO LAND TUBING				7,667.0